

# CORNER FILE TRACKING

H:\Survey\Corners\Misc\Filctrac.doc

11/23/98

**CORNER NUMBER**

**134100500**

<b>STEP</b>	<b>HISTORY(H)</b>	<b>RESTORATION()</b>
Form Prepared, DB	12/19/00	N/A
Field Inspection, DB	N/A	N/A
Form Checked, DB	12/19/00	N/A
Form Edited, DB	12/19/00	N/A
Form Signed, DB	N/A	N/A
Authorize Payment, DB	N/A	N/A
Archive Digital Files	1/10/01	—
Collect Documents	ll	—
Scanned	1-11-01	1-11-01
Copy for Filming	1/10/01	—
Filed, DB		
Finish index (count unit)		
Filmed (Archived), DB		

(DB) = Entry needed in database (Access).

## COMMENTS:

1/10/01 - READY TO SCAN INTO A NEW FILE.

T135  
R5W R4W  
12 / 7  
13 / 18

100500

CORNER HISTORY

T/3S, R 4 W, SEC. 7; D.L.C.:

CORNER SW

#3921

	DATE	SOURCE	SURVEYOR	MONUMENT & ACCESSORIES	COMMENTS	
1	3/10/1853	ORIG. G.L.D.	GEORGE W. HYDE	POST @ 2 ASH + 2 MAPLE B.T.'S		1
2						2
3						3
4						4
5	2 12/10/1908	CS #94 NOTES	F.M. WILKES	FND. 2 BT'S, SET 1 1/4" PIPE @ 4 NEW BT'S FB 2/38	OLD #28	5
6						6
7	3 12/10/1908	OLD COR. REST. BK. #1, PL. 3	F.M. WILKES, CS	FND. 2 BT'S, SET 1 1/2" PIPE @ 4 NEW BT'S		7
8						8
9	4 -	REST. 1704	-	TRAV.		9
10						10
11	5 10/10/1917	MAP NO. 13-445-00001	W.C. GALLOWAY, CS	1 1/4" PIPE + 4 BT'S		11
12						12
13	6 4/9/1921	CS #759 NOTES	WALTER W. LARSEN, DCS	TIED FROM S. NOT DESL FB 9/20	OLD #218	13
14						14
15	7 4/7/1921	CS #759 MAP	WALTER W. LARSEN	1 1/4" PIPE	" "	15
16						16
17	8 4/7/1921	MAP NO. 13-445-00002	WALTER W. LARSEN	1 1/4" PIPE		17
18						18
19	9 1/7/1952	CS #2347 NOTES	MARTIN BEYERLEIN	FND. 1 1/2" PIPE + 3 BT'S, EST 3 NEW ACES.		19
20						20
21	10 1/7/1952	CS #2347 MAP	CURTIS C. HANSON, CS	1 1/4" PIPE		21
22						22
23	11 12/1/1952	CS # 2439	MARTIN BEYERLEIN	1 1/4" PIPE		23
24						24
25	12 8/4/1978	CS # 6702	JOHN HOLLINGSWORTH	FND. 1 1/4" I.P.		25
26						26
27	13 2/23/1991	REST. 3921	CURT LIESENFELT	FND. 1 1/2" 100 FT 1/4 COR. TO W, SET BDC @ 4 NEW ACES.		27
28						28
29	14 6/16/1997	BEN. CO. GIS/DEPT MAPPING PROJ.	RAY WILSON, D.C.S.	FND. BL. EST. ST. P.W. CORO. @ RTK GPS		29
30						30
31						31

1704

448  
2353  
45719  
20M.P

#28

Cor of Secs 7, 12, 13 + 18 Tp 13-5 & 4 W.

Set  $\frac{1}{2}$ " Galvanized pipe 30" long. tree and stump standing

Maple 18" in diam bears N 66°-05 E. 62.8'

Ash 10" " " " S 39-30 E. 25.7'

Maple 11 " " " " N 86°-W. 18.2'

Ash 12 " " " " S 61-30 W. 64.8'

"

$\frac{1}{4}$  corner bet Secs 1 + 12 Tp 13-5.

drove  $\frac{3}{4}$  x 44" galvanized iron pipe 1 tree standing

An Oak 8" in diam bears N 11°-30' E 215.1'

"

$\frac{1}{4}$  corner bet Secs 6 + 7 Tp 13-~~5~~<sup>4</sup>

$\frac{3}{4}$ " iron pipe, original oak on South standing.

a Fir 15" in diam bears N 33-30 E .480 = 31.8'

" " 15" " " " S. 83° E 278'

#30

F.M.W.

N. E. cor of Andrew Foster D.L.C. 37 Tp 13-~~5~~<sup>6</sup>

Set 24" section of sickle bar, 1st standing.

an oak 24" in diam bears N 7-30 E 71.9'

" " 14" " " " N 15-55 W 118.9'

#31.

F.M.W.

$\frac{1}{4}$  cor. bet. Secs 28 + 33 Tp 11-7  $\sqrt{21-44}$

a Fir 26" in diam, bears. S 19-40 W. 11.7

" " 22" " " " N 21-20 W. 9.1

Set Stone 24" x 8" x 6" Stump and tree down.

13-4-718 13-5-12,13

Corner of Sections 7, 12, 13, and 18 , Twp. 13-5 and 4W

Reestablishment by F. M. Wilkes

Date 12-10-1908

1704

Set 1½" Galvanized pipe 30" long (Tree and stump standing)

Maple 18" in diam bears N66°-05E	62.8 feet
Ash 10" in diam bears S39-30E	25.7 feet
Maple 11" in diam bears N86°-W	18.2 feet
Ash 12" in diam bears S61-30W	64.8 feet

DATE 12/18/2000TOWNSHIP 13 SOUTH, RANGE 04 WEST, WILLAMETTE MERIDIAN; SECTION 07 CORNER SOUTHWEST  
DONATION LAND CLAIM N/A CORNER \_\_\_\_\_**COMMON CORNER(S):**

THE NORTHWEST CORNER OF SECTION 18.

THE SOUTHEAST CORNER OF SECTION 12 IN TOWNSHIP 13 SOUTH, RANGE 5 WEST.

THE NORTHEAST CORNER OF SECTION 13 IN TOWNSHIP 13 SOUTH, RANGE 5 WEST.

**RECORDS (INFORMATION IN BOLD ITALICS IS COUNTY STAFFS' INTERPRETATION OF THE RECORD)**

- [01] ORIGINAL GLO SURVEY BY GEORGE W. HYDE, D.S., APPROVED MARCH 18, 1853. *POST WITH 4 BEARING TREES, MEASURED TO THE FACE.*
- [02] COUNTY SURVEY NO. 94 (OLD NO. 28) NOTES (FIELD BOOK NO. 2, PAGE 38) BY F. MARION WILKES, C.S., DATED DECEMBER 10, 1908. *FOUND 2 BEARING TREES. SET A 1 1/4" PIPE WITH 4 NEW BEARING TREES.*
- [03] OLD CORNER RESTORATION BOOK NO. 1, PAGE 3 BY F. MARION WILKES, DATED DECEMBER 10, 1908. *SAME INFORMATION AS RECORD [02].*
- [04] CORNER RESTORATION NO. 1704. *THIS IS A TRANSCRIBED COPY OF RECORD [03] AND MAY CONTAIN ERRORS AND OMISSIONS.*
- [05] MAP NO. 13-4 & 5-00001 BY W. C. GALLOWAY, C.S., DATED OCTOBER 10, 1917. *1 1/4" PIPE WITH 4 BEARING TREES.*
- [06] COUNTY SURVEY NO. 759 (OLD NO. 218) NOTES (FIELD BOOK NO. 9, PAGE 20) BY WALTER W. LARSEN, D.C.S., DATED APRIL 9, 1921. *TIED FROM THE SOUTH BUT NOT DESCRIBED.*
- [07] COUNTY SURVEY NO. 759 (OLD NO. 218) MAP BY WALTER W. LARSEN, DATED APRIL 7, 1921. *1 1/4" PIPE.*
- [08] MAP NO. 13-4 & 5-00002 BY WALTER W. LARSEN, DATED APRIL 7, 1921. *1 1/4" PIPE.*
- [09] COUNTY SURVEY NO. 2347 NOTES BY MARTIN BEYERLEIN, DATED JANUARY 7, 1952. *FOUND AN 1 1/2" PIPE AND 3 BEARING TREES. ESTABLISHED 3 NEW ACCESSORIES.*
- [10] COUNTY SURVEY NO. 2347 MAP BY CURTIS C. HANSON, C.S., DATED JANUARY 7, 1952. *1 1/4" PIPE.*
- [11] COUNTY SURVEY NO. 2439 BY MARTIN BEYERLEIN, DATED DECEMBER 1, 1952. *1 1/4" PIPE.*
- [12] COUNTY SURVEY NO. 6702 BY JOHN HOLLINGSWORTH, P.L.S., DATED AUGUST 4, 1978. *FOUND AN 1 1/4" PIPE.*
- [13] CORNER RESTORATION NO. 3921 BY CURTIS J. LIESENFELT, P.L.S., DATED APRIL 23, 1991. *FOUND AN 1 1/2" PIPE AND THE QUARTER CORNER TO THE WEST. SET A BRASS DISC WITH 4 NEW ACCESSORIES.*
- [14] BENTON COUNTY GIS/DEA MAPPING PROJECT BY RAY WILSON, D.C.S., DATED JUNE 16, 1997. *FOUND A BRASS CAP. ESTABLISHED STATE PLANE COORDINATES WITH RTK GPS.*

**COMMENTS/LOCATION/ETC:****NOTES:**

THIS IS A MICROSOFT WORD 97 DOCUMENT NAMED "34100500" CREATED FROM A BOILER PLATE DOCUMENT NAMED "HISTORY", WHICH HAS A STYLESHEET NAMED "CORNER" ATTACHED TO IT.

**FIRM/AGENCY:** BENTON COUNTY SURVEYOR'S OFFICE  
**ADDRESS:** 360 S.W. AVERY AVE. CORVALLIS OR 97333; PH. 766-6821  
**RESEARCH BY:** CURTIS J. LIESENFELT, P.L.S.  
**DATA ENTRY BY:** SAME

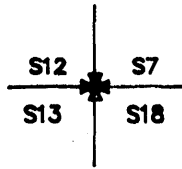
BENTON COUNTY CORNER RESTORATION FORM

3921

TOWNSHIP 13 S RANGE 4 W SECTION 7 D.L.C. \_\_\_\_\_ CORNER SW  
DATE 4/23/91 CORNER RESTORATION FIELD BOOK NUMBER 10 PAGE(S) 20

CORNER DESIGNATION:

THE SECTION CORNER COMMON TO SECTIONS 7 AND 18, IN T 13 S, R 4 W, AND SECTIONS 12 AND 13, IN T 13 S, R 5 W, WILLAMETTE MERIDIAN.



- \_\_\_\_\_ CONDITION REPORT ONLY
- \_\_\_\_\_ REFERENCED OUT
- XX RENEWED
- \_\_\_\_\_ SURVEYED IN

LOCATION AND COMMENTS:

THE CORNER IS LOCATED IN A CULTIVATED FIELD 50 FEET SOUTHWESTERLY FROM A BRUSH LINE AND APPROXIMATELY 150 FEET WESTERLY FROM THE TOP OF BANK ON THE WESTERLY SIDE OF THE ALBANY SLOUGH.

PREVIOUS RENEWALS/SURVEYS, ETC:

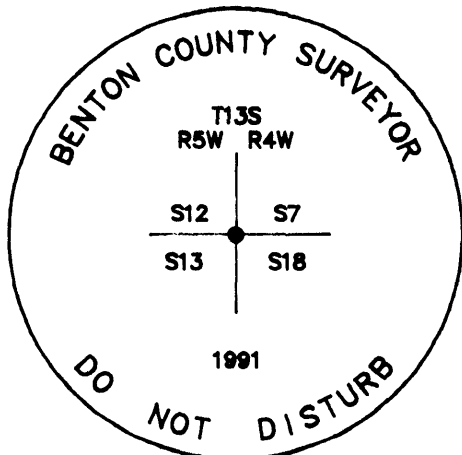
- ORIGINAL GLO SURVEY BY GEORGE W. HYDE DATED 1853.
- OLD CORNER RESTORATION BOOK NO. 1 PAGE 3 BY F.M. WILKES DATED DECEMBER 10, 1908.
- CORNER RESTORATION NO. 1704 BY F.M. WILKES DATED DECEMBER 10, 1908.
- COUNTY SURVEY NO. 94 BY F.M. WILKES DATED DECEMBER 10, 1908.
- MAP NO. 13-4 & 5-00001 BY W.C. GALLOWAY DATED OCTOBER 10, 1917.
- COUNTY SURVEY NO. 759 BY WALTER W. LARSEN DATED APRIL 7, 1921.
- MAP NO. 13-4 & 5-00001 BY WALTER W. LARSEN DATED APRIL 7, 1921.
- COUNTY SURVEY NO. 2347 BY CURTIS C. HANSON DATED JANUARY 7, 1952.
- COUNTY SURVEY NO. 2439 BY MARTIN BEYERLEIN DATED DECEMBER 1, 1952.
- COUNTY SURVEY NO. 6702 BY JOHN HOLLINGSWORTH DATED AUGUST 4, 1978.

MONUMENTS AND ACCESSORIES FOUND (CONDITION AND SOURCE):

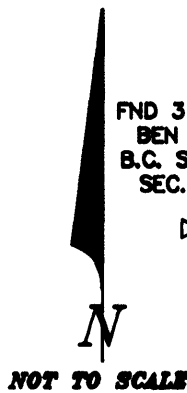
- FOUND: 1 1/2" INSIDE DIAMETER IRON PIPE, 14" BELOW GROUND SURFACE FOR THE CORNER (CORNER RESTORATION NO. 1704).
- FOUND: 3 1/4" BENTON COUNTY BRASS CAP AT THE SOUTH QUARTER OF SECTION 12, IN T 13 S, R 5 W, W. M., AS PER CORNER RESTORATION NO. 3918, BEARS N 89° W 2679.69 FEET (S 88° 34' W 2679.80 FEET MAP NO. 13-4 & 5-00001).

NO OTHER RECORD BEARING OBJECTS WERE RECOVERED.

MONUMENT DETAIL

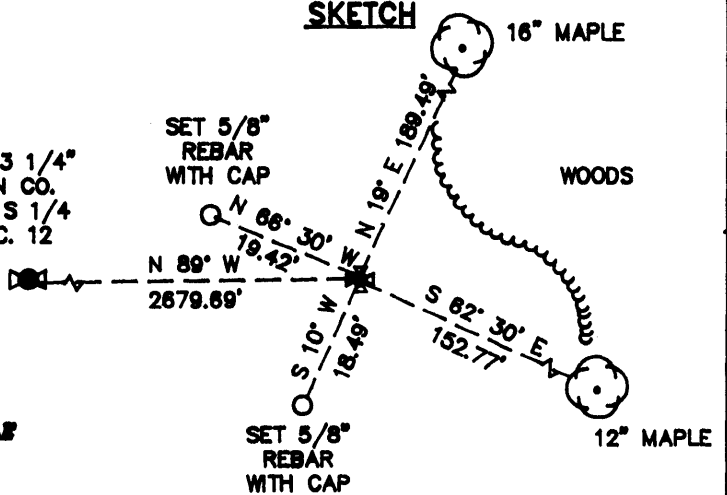


3 1/4" BRASS CAP



FND 3 1/4" BEN CO. B.C. S 1/4 SEC. 12

SKETCH



MONUMENT SET (PROCEDURES AND DESCRIPTION):

SET: 3 1/4" BENTON COUNTY BRASS CAP, STAMPED AS SHOWN, IN THE CENTER OF THE RECOVERED 1 1/2" PIPE AFTER LOWERING THE PIPE TO A POINT 18" BELOW GROUND SURFACE.

NEW ACCESSORIES:

- A MAPLE 16" IN DIAMETER BEARS N 19° E 189.49 FEET, FACED AND SCRIBED "T13S R4W S7 BT". SET A PK NAIL AND B.C.B.W. IN THE EASTERLY BASE. SET A B.T. TAG ON THE SOUTHERLY FACE. THE MAPLE B.T. IS THE MOST WESTERLY TRUNK IN A GROUP OF THREE MAPLES OF SIMILAR SIZE.
- A MAPLE 12" IN DIAMETER BEARS S 62° 30' E 152.77 FEET, FACED AND SCRIBED "T13S R4W S18 BT". SET A PK NAIL AND B.C.B.W. IN THE NORTHEASTERLY BASE. SET A B.T. TAG ON THE NORTHWESTERLY FACE. THE MAPLE B.T. IS THE MOST NORTHERLY TRUNK IN A GROUP OF FOUR MAPLES OF SIMILAR SIZE.
- SET: 5/8" X 30" REBAR WITH A YELLOW PLASTIC CAP MARKED "BENTON COUNTY SURVEYOR", 22" BELOW GROUND SURFACE, BEARS S 10° W 18.49 FEET.
- SET: 5/8" X 30" REBAR WITH A YELLOW PLASTIC CAP MARKED "BENTON COUNTY SURVEYOR", 21" BELOW GROUND SURFACE, BEARS N 66° 30' W 19.42 FEET.

NOTES:

B.C.B.W. IS A BRASS WASHER STAMPED "BENTON COUNTY SURVEYOR". COMPASS DECLINATION IS 20° EAST. ALL MEASURED DISTANCES AND COMPASS BEARINGS ARE TO THE CENTER OF THE OBJECT, UNLESS OTHERWISE NOTED.

THIS RESTORATION WAS PERFORMED AT THE DIRECTION AND APPROVAL OF THE BENTON COUNTY SURVEYOR. DF

FIRM/AGENCY: BENTON COUNTY SURVEYOR

ADDRESS: 360 S.W. AVERY AVE. CORVALLIS OR. 97333; PH. 757-6821

SURVEY CREW: CURTIS J. LIESENFELT & MARK E. ANDERSON

WITNESS:

REGISTERED PROFESSIONAL LAND SURVEYOR

*Curtis J. Liesenfelt*

OREGON  
JULY 17, 1986  
CURTIS J. LIESENFELT  
2213