

CORNER FILE TRACKING

H:\Survey\Corners\Misc\Filetrac.doc

11/23/98

CORNER NUMBER
135600100

STEP	HISTORY()	RESTORATION()
Form Prepared, DB	11/20/03	12/16/03
Field Inspection, DB	12/4/03	12/4/03
Form Checked, DB	12/23/03	12/23/03
Form Edited, DB	12/24/03	12/24/03
Form Signed, DB	12/24/03	12/24/03
Authorize Payment, DB	—	—
Archive Digital Files	12/26/03	12/26/03
Collect Documents	12/26/03	12/26/03
Scanned	12/26/03	12/26/03
Copy For Filming		
Filed, DB		
Finish index (count unit)	12/4/03	12/4/03
Filmed (Archived), DB		

(DB) = Entry needed in database (Access).

COMMENTS:

DATE 11/20/2003TOWNSHIP 13 SOUTH, RANGE 05 WEST, WILLAMETTE MERIDIAN; SECTION 35 CORNER SOUTHEAST
DONATION LAND CLAIM N/A _____ CORNER _____COMMON CORNER(S):
SOUTHWEST OF SECTION 36**RECORDS (INFORMATION IN BOLD ITALICS IS COUNTY STAFFS' INTERPRETATION OF THE RECORD)**
BASED ON EXTENSIVE RESEARCH AND RECOVERY OF EVIDENCE, THIS OFFICE HAS DETERMINED THAT MOST GENERAL LAND OFFICE SURVEYORS MEASURED TO THE FACE OF BEARING TREES.

- [01] GENERAL LAND OFFICE (GLO) NOTES BY JAMES E. FREEMAN, D.S., DATED FEBRUARY 2, 1853. SET POST. MARKED A 24" W. OAK N15°E 327 LKS. (215.82 FEET) AND A 20" W. OAK N15°W 444 LKS. (293.04 FEET).
- [02] COUNTY ROAD NO. 35022 (OLD NO. 359) FIELD NOTES (FIELDBOOK 18, PAGE 78) BY W. C. GALLOWAY, C.S., NO DATE GIVEN. SET A ¾" PIPE. FOUND A 24" OAK N15°E 3.27 CHS. (215.82 FEET) STANDING. MARKED A 8" OAK N15°W 3.871 CHS. (255.486 FEET).
- [03] CORNER RESTORATION BOOK NO. 1, PAGE 94 BY W. C. GALLOWAY, C.S., DATED APRIL 24, 1915. SET A ¾" PIPE. FOUND N.W. OAK A STUMP (GLO BT) AND A 24" OAK (GLO BT) N15°E 3.27 CHS. (215.82 FEET). MARKED A 8" OAK N15°W 3.871 CHS. (255.486 FEET).
- [04] CORNER RESTORATION NO. 1786. *TRANSCRIBED FROM RECORD [03] AND MAY CONTAIN ERRORS AND/OR OMISSIONS.*
- [05] COUNTY ROAD NO 35022 (OLD NO. 359) PER COUNTY ROAD BOOK 2, PAGE 366 BY W.C. GALLOWAY, C.S., DATED MAY 3, 1915. ¾" PIPE.
- [06] BENTON COUNTY MAP NO. 13-5-0017 PLATTED BY W. C. GALLOWAY, C.S., DATED APRIL/OCTOBER 1915. ¾" PIPE.
- [07] BENTON COUNTY MAP NO. 13-4&5-00005 NO AUTHOR GIVEN, DATED JULY 1922. ¾" PIPE.
- [08] BENTON COUNTY MAP NO. 14-5-00001, NO AUTHOR GIVEN, DATED JULY 1934. *FOUND BUT NO DESCRIPTION GIVEN.*

NOTES:

THIS IS A MICROSOFT WORD 2000 DOCUMENT NAMED "35600100" CREATED FROM A BOILER PLATE DOCUMENT NAMED "HISTORY", WHICH HAS A STYLESHEET NAMED "CORNER" ATTACHED TO IT.

FIRM/AGENCY: BENTON COUNTY SURVEYOR'S OFFICE
ADDRESS: 360 S.W. AVERY AVE. CORVALLIS OR 97333; PH. 766-6821
RESEARCH BY: BERNARD S. ALTENBACH, ENGINEER/SURVEY TECH.
DATA ENTRY BY: BSA

BENTON COUNTY CORNER RESTORATION FORM, PAGE 1 OF 2, 135600100R2

SEE CORNER HISTORY FORM FOR RECORDS ETC.

CORNER RESTORATION FIELD BOOK NUMBER 21 PAGE(S) 68 DATE 12/04/2003
TOWNSHIP 13 SOUTH, RANGE 5 WEST, WILLAMETTE MERIDIAN; SECTION 35 CORNER SE
DONATION LAND CLAIM NONE CORNER _____
CONDITION REPORT _____; REFERENCED OUT _____; RENEWED XX; SURVEYED IN _____

LOCATION AND COMMENTS:

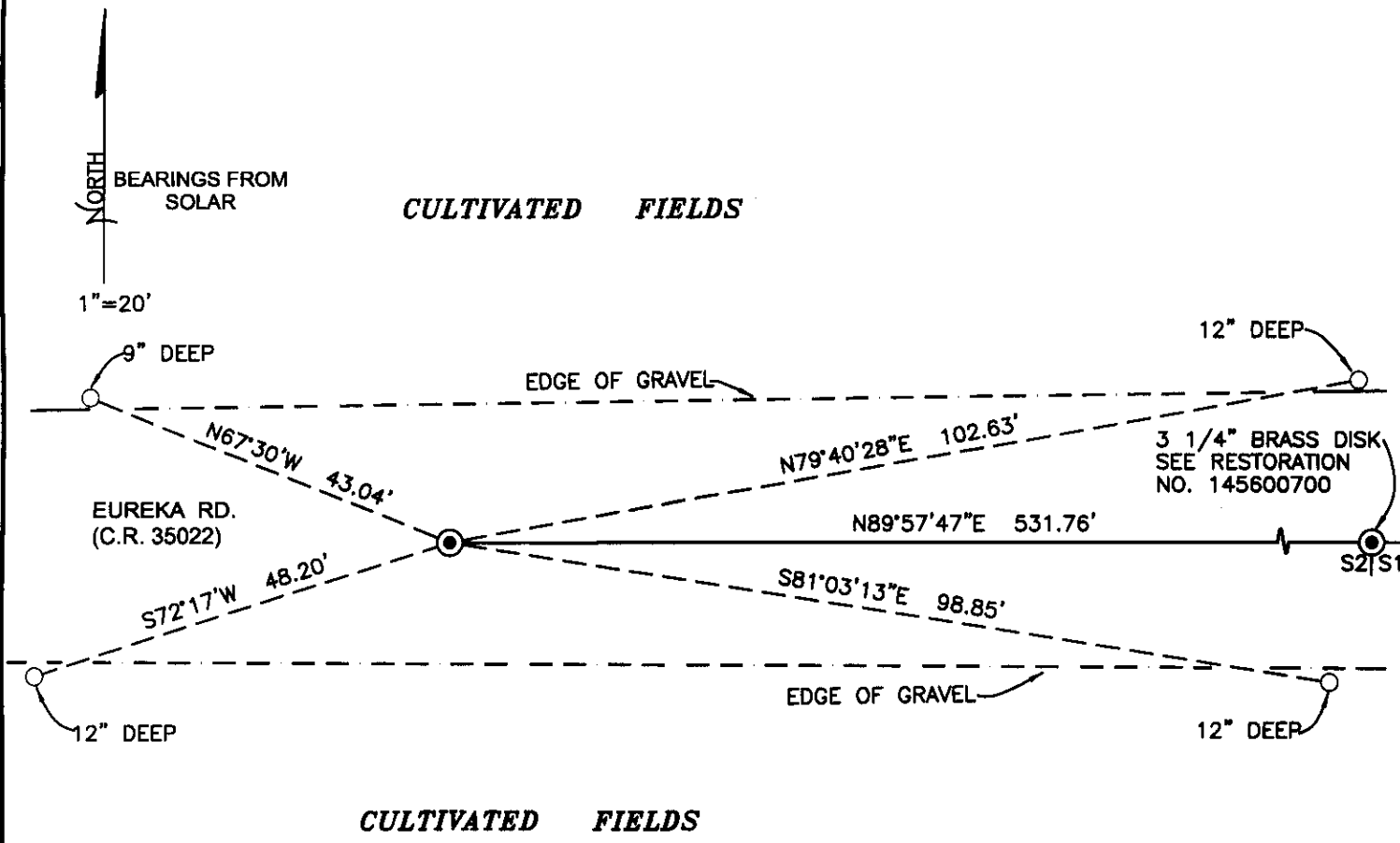
CORNER IS LOCATED IN THE APPROXIMATE CENTER OF TRAVELED EUREKA ROAD (C.R. 34022). TO REACH CORNER FROM THE JUNCTION OF EUREKA AND BUNDY ROADS, TRAVEL WESTERLY ON EUREKA ROAD FOR 0.10 MILES TO CORNER WHICH IS 19" BELOW ROAD SURFACE. CORNER IS GOOD FOR PREMARKING AND GPS CONTROL.

MONUMENTS AND ACCESSORIES FOUND (CONDITION AND SOURCE):

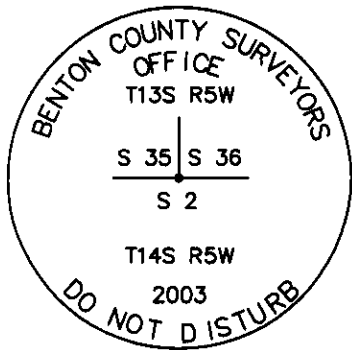
1. FOUND 3/4" IRON PIPE 19" BELOW ROAD SURFACE FOR CORNER POSITION.
(SET 3/4" PIPE FROM ORIGINAL NORTHEAST GLO BEARING TREE PER RECORDS [02] AND [03]).
(3/4" PIPE PER RECORDS [05] - [07]).
2. FOUND 3 1/4" BRASS DISK AT THE SECTION CORNER COMMON TO SECTIONS 1 AND 2, T14S, R5W, N89°57'47"E, 531.76 FEET.
(EAST 535.26 FEET PER RECORD [01]).
(S89°54'E, 531.63 FEET PER RECORD [05], [06] AND [08]).
(EASTERLY, 531.63 FEET PER RECORD [07]).

MONUMENT SET (PROCEDURES AND DESCRIPTION):

HELD THE POSITION OF THE RECOVERED 3/4" IRON PIPE FOR CORNER, WHICH WAS ESTABLISHED FROM GLO EVIDENCE (NE GLO BEARING TREE) PER RECORD [02]. NO EVIDENCE REMAINS OF GLO OR COUNTY SURVEYOR'S ACCESSORIES. SET 2" X 31 1/2" GALVANIZED IRON PIPE OVER 3/4" PIPE, WITH 3 1/4" BRASS DISK CONCRETED IN THE TOP, 13" BELOW ROAD SURFACE, MARKED AND REFERENCED AS SHOWN ON PAGE 2 OF 2.



MONUMENT DETAIL



3 1/4" BRASS DISK

LEGEND

- SET 5/8" X 30" REBAR WITH YELLOW PLASTIC CAP MKD "BENTON COUNTY SURVEYOR"
- FOUND MONUMENT AS NOTED
- ⊙ GOVERNMENT MONUMENT SET AS SHOWN
- ⊙ GOVERNMENT MONUMENT FOUND AS SHOWN
- GLO GENERAL LAND OFFICE

NEW ACCESSORIES:

1. SET REBAR (SEE LEGEND) 12" DEEP ON THE SOUTH SIDE OF CULTIVATED FIELD, N79°40'28"E, 102.63 FEET.
2. SET REBAR (SEE LEGEND) 12" DEEP ON THE NORTH SIDE OF CULTIVATED FIELD, S81°03'13"E, 98.85 FEET.
3. SET REBAR (SEE LEGEND) 12" DEEP ON THE NORTH SIDE OF CULTIVATED FIELD, S72°17'W, 48.20 FEET.
4. SET REBAR (SEE LEGEND) 9" DEEP ON THE SOUTH SIDE OF CULTIVATED FIELD, N67°30'W, 43.04 FEET.

NOTES:

COMPASS DECLINATION IS 20' EAST. ALL MEASURED DISTANCES AND BEARINGS ARE TO THE CENTER OF THE OBJECT, UNLESS OTHERWISE NOTED. ALL BEARING TREES ARE PAINTED AND HAVE A B.T. TAG ATTACHED, FACING THE CORNER UNLESS OTHERWISE NOTED. ALL NEW BEARING TREES HAVE A PLASTIC WASHER (STAMPED "BENTON COUNTY SURVEYOR CORNER RESTORATION") ATTACHED (BY ALUMINUM NAIL) TO THE FACE, BELOW THE "BT" FOR DISTANCE AND ANGLE MEASUREMENT UNLESS OTHERWISE NOTED. THE DRAWING IS FROM AUTOCAD RELEASE 2002.

THIS RESTORATION WAS PERFORMED AT THE DIRECTION AND APPROVAL OF THE BENTON COUNTY SURVEYOR, Raw

REGISTERED
PROFESSIONAL
LAND SURVEYOR

12/24/03 *David M. Dean*

FIRM/AGENCY: BENTON COUNTY SURVEYOR'S OFFICE
 ADDRESS: 360 S.W. AVERY AVE. CORVALLIS OR 97333; PH. 766-6821
 PRESENT: DAVID M. DEAN, P.L.S., AND BERNIE ALTENBACH, SURVEY TECH.
 EQUIPMENT: LEICA TCR 1105 W/TDS ONBORAD

OREGON
JULY 13, 1984
DAVID M. DEAN
2090

RENEWAL DATE: 12/31/03

S. Road # 359 S.W. corner of Robt. D. Grimsley Ct. # 49 T. 13 S. R. 5 W.

Stone 6"x10" X 9" already set.

In fence row both N, S, & E.

Witness Hugh Taylor April 27, 1915.

Cor. to Secs. 34 & 35 on 3rd std. parallel T. 13 S. R. 5 W.

Set 3/4" pipe

Ash 8" bears S. 65° 35' W. 1.848 chs.

Forked, 14" " N 62° W. 1.414 "

Witness Hugh Taylor April 28, 1915.

Cor. to secs. 2 & 3 on 3rd std. parallel T. 14 S. R. 5 W.

Set 3/4" pipe

Ash 15" bears N. 24° 22' W. 8.806 chs.

Witness Hugh Taylor April 28, 1915.

1/4 sec. cor. on S. of sec. 35 3rd std. parallel T. 13 S. R. 5 W.

Set 3/4" pipe

Ash 32" in dia. bears N. 6° E. .717 chs.

" 11" " " N. 44° 30' W. .477 "

Witness Hugh Taylor April 28, 1915.

1/4 sec. cor. on N. of sec. 2-3rd std. parallel T. 14 S. R. 5 W.

Set 3/4" pipe S.E. oak gone was in field.

Oak 10" bears S. 33° 15' E. .428 chs.

" 10" " S. 50° W. 2.25 " std.

Witness Hugh Taylor April 24, 1915.

Cor. to secs. 35 & 36 on 3rd std. parallel T. 13 S. R. 5 W.

Set 3/4" pipe N.W. oak stamp

Oak 24" bears N. 15° E. 3.27 chs. std.

" 8" " N. 15° W. 3.871 "

Witness Hugh Taylor April 24, 1915.

Cor. to secs. 1 & 2 on 3rd std. parallel T. 14 S. R. 5 W.

Set 3/4" pipe

Ash 8" bears S. 77° W. 3.20 chs. std.

Witness Hugh Taylor April 29, 1915.

1/4 sec. cor. on N. of sec. 1 T. 14 S. R. 5 W.

Set a 3/4" pipe Maple stump close check.

Ash 13" bears S. 51° 15' W. .582 chs.

" 11" " N 44° 40' W. .677 "

Witness Hugh Taylor April 29, 1915.

CS # 242 Cor. to secs. 27, 28, 33 & 34 T. 14 S. R. 5 W.

Set 1 1/4" pipe replaced a stake

Oak 10" bears N. 2° E. 1.00 chs. std.

" 24" " S. 72° 30' E. 3.286 "

" 14" " S 86° W. 1.37 " "

" 12" " N. 42° 15' W. .75 " "

Witnesses J. Mc Gillis & Frank Curry May 17, 1915.

1/4 sec. cor. between secs. 27 & 34 T. 14 S. R. 5 W.

Set 3/4" galv. pipe 10" under surface

Ash 24" bears N. 67° E. 4.77 chs. std. Bng. taken from line Remd. Ash is hollow and 40" in dia.

Witnesses J. M. Faris & Miller June 8, 1915.

CS # 22

B. Wilkes Dec. 1915

CS # 24

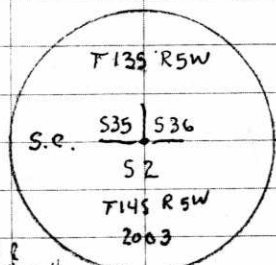
135600100

REMONUMENTING 35/36 T135 R5W

Fd 3/4" I.P. 19" BELOW ROAD
SURFACE IN CTR OF EUREKA RD.
AS SET FROM ORIG. EVIDENCE. I.P.
SET BY W.C.G. PER RECORD [02]
HELD I.P. FOR TRUE CORNER POSITION.
SET 2" X 3 1/2" G.I.P. OVER 3/4" I.P.
W/ 3/4" BRASS DISK CONC. IN TOP
13" BELOW ROAD SURFACE, MKD AS
SHOWN.

NO GLO OR CG. ACCESSORIES REMAIN
REFERENCED AS SHOWN.

SET 6 ORANGE CARSONITE POST



SS
17-18-58

58) Fd 3/4" I.P. 19" IN R
EUREKA RD SET 2" X 3 1/2"
GIP W/ 80 13" (COVER) 3/4" BRASS DISK

CLDY, MILD
50°F, 29.9" Hg
LEICA TC1105/TDS

12/4/03 21/68
D. DEAN
B. ALTENBACH

