

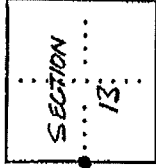
135600440

BENTON COUNTY SURVEYORS OFFICE - CORNER RESTORATION

3395

7 13 S, R 5 W, W. B. & M., BENTON COUNTY, OREGON  
SECTION W 1/4 13

REPORTED BY ANDREW FOSTER  
TITLE ENGINEERING TECHNICIAN  
DATE SEPTEMBER 2, 1986



● OFFICIAL CORNER FOUND  
○ CORNER SET

W 1/4 CORNER COMMON TO SEC. 13 14  
IS 3/4" (I.D.) IRON PIPE 6" BELOW SURFACE

ADDITIONAL INFORMATION  
CORNER WAS FOUND IN GOOD CONDITION. LOCATED  
1/4 MILE SOUTH OF THE INTERSECTION OF LAKESIDE  
DRIVE COUNTY ROAD NUMBER 35210 AND SMITH  
LOOP COUNTY ROAD NUMBER 35260 ON LAKESIDE  
DRIVE IN THE EAST SHOULDER. FOUND A 64"  
WHITE OAK BEARING TREE. TREE WAS NOT CUT  
OPEN OR REBLAZED. NO BRASS CAP WAS SET.

LEGIBLE MARKS ON BEARING OBJECTS			
FOUND 5/8" IRON ROD ON THE CENTERLINE OF LAKESIDE DRIVE 12" BELOW SURFACE IN GOOD CONDITION	FOUND ORIGINAL BEARING TREE SET BCBW ON WEST BASE. DID NOT REBLAZE WEST BASE	BLAZED AND SCRIBED N 1/4 S 14 BT SET BCBW ON NORTH	
FOUND	FOUND	SET	
KIND ROD	WHITE OAK	WHITE OAK	
SIZE 5/8"	64"	51"	
BEARING S 4° 02' N	S 9° 28' E	S 57° 43' W	
DISTANCE 570.02'	666.09'	498.97'	
BT TAG POSTED	YES	YES	

OVER

LEGEND

( ) RECORD INFORMATION FROM CORNER ROAD NO. 35260  
RESTORATION CARD NUMBER 1745 (13-5-13)  
GALLOWAY FEB 1914, OR ROAD RECORD  
IN BOOK 2 PAGE 329 DATED FEB 1914 ON RECORD  
AT BENTON COUNTY PUBLIC WORKS OFFICE.

[ ] RECORD OR CALCULATED INFORMATION FROM  
CS 6645

BCBW BENTON COUNTY BEASS WASHER

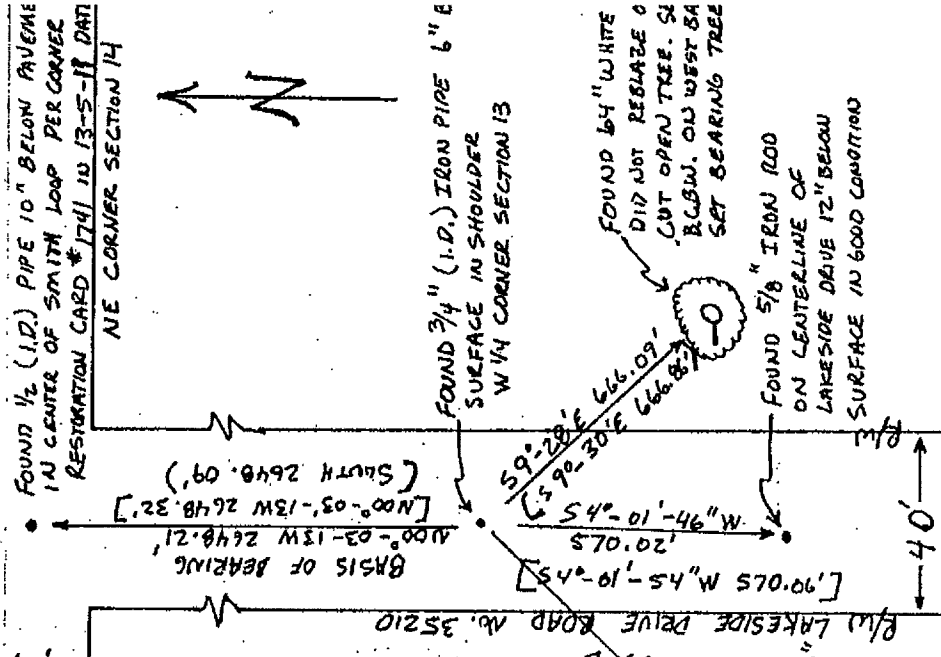
(I.D.) INSIDE DIAMETER

BEARINGS ARE TO CENTER OF BEARING OBJECT  
DISTANCES ARE TO CENTER OF BEARING OBJECT  
WHICH IS REFERENCED BY A BCBW. DISTANCES  
ARE MEASURED TO BCBW.

REGISTERED  
PROFESSIONAL  
LAND SURVEYOR

Danna L. Ingram

OREGON  
JULY 18, 1982  
DANNA L. INGRAM  
1995



135600440

REMONUMENTING 1/4 14/13 T135, R6.W

FD 3/4" X 40" IRON PIPE 6" BELOW ROAD SURFACE IN E'LY WHEEL TRACK OF LAKESIDE DRIVE FOR COR POSITION. FD RECORD [11]

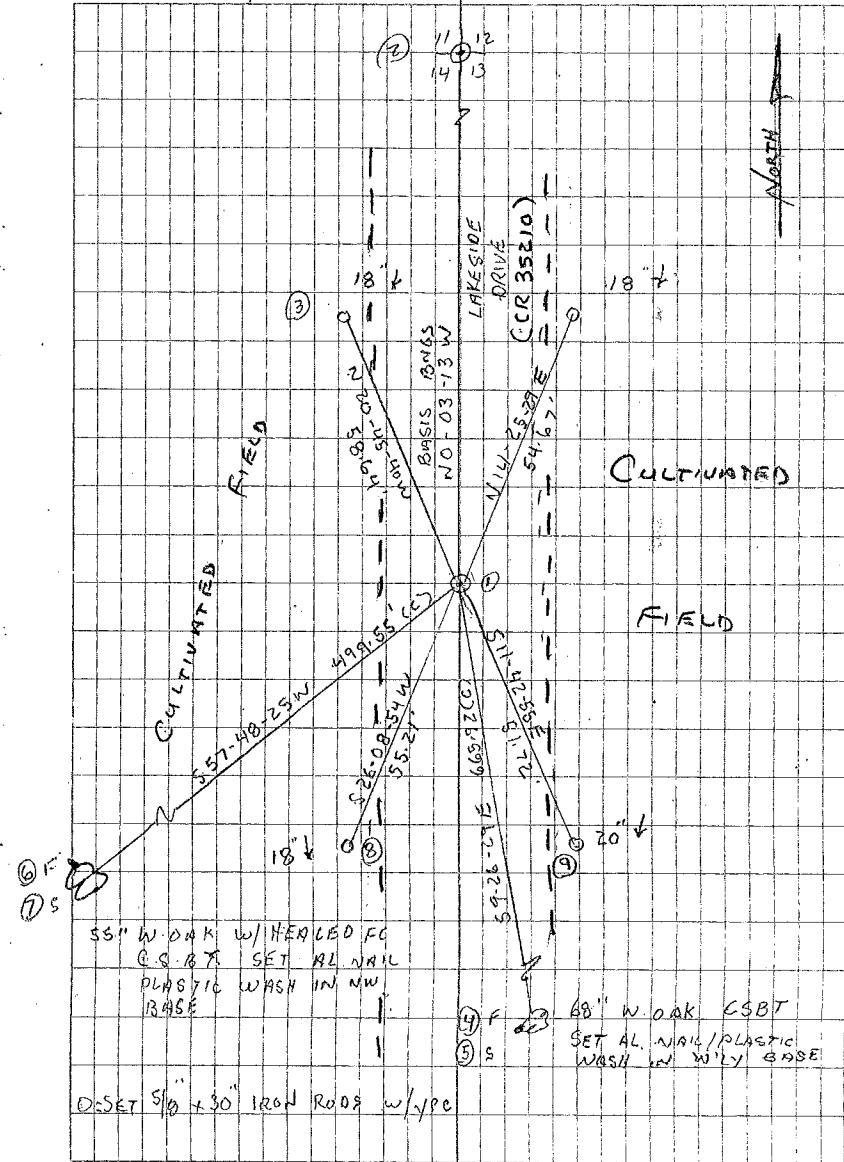
BT - NOW 55" W OAK (S 57-43-14W, 49897), FD RECORD [02] BT - NOW " W FIR (S 9-30E, 10,10404)

REMOVED 3/4" PIPE AND SET 2" X 3 1/2" G.I.P. W/ 3/4" BRASS DISK CONC. IN TOP 10" BELOW ROAD SURFACE, MKD AS SHOWN. REMOVED 3/4" X 40" IRON PIPE FROM AREA.

SET 6' ORANGE CARSONITE "SURVEY MARKER" POST 10' EAST OF COR. MON.

CLDY, MILD  
55°F, 30.1" Hg  
LEICA TCR 1105/TDS

3/23/07 25/17  
D. DEAN  
B. ALTENBACH



DATE 03/20/2007

TOWNSHIP 13 SOUTH, RANGE 05 WEST, WILLAMETTE MERIDIAN; SECTION 13 CORNER WEST 1/4  
DONATION LAND CLAIM N/A CORNER N/A

COMMON CORNER(S):  
EAST 1/4 OF SECTION 14

**RECORDS (INFORMATION IN BOLD ITALICS IS COUNTY STAFFS' INTERPRETATION OF THE RECORD)**

**BASED ON EXTENSIVE RESEARCH AND RECOVERY OF EVIDENCE, THIS OFFICE HAS DETERMINED THAT MOST GENERAL LAND OFFICE SURVEYORS MEASURED TO THE FACE OF BEARING TREES.**

- [01] GENERAL LAND OFFICE (GLO) NOTES BY J. FREEMAN, D.S., DATED JANUARY 24, 1853. SET A POST. MARKED A 40" W. OAK S161/2°E 867 LKS. (572.22 FT.) AND A 30" W. OAK S60°W 673 LKS. (444.18 FT.).
- [02] COUNTY SURVEY OF ROAD NO. 338 FIELD NOTES (BOOK 16, PAGE 20) BY W. C. GALLOWAY, C.S., DATED FEBRUARY 1914. SET A 3/4" PIPE. FOUND A 30" OAK STUMP (GLO BT) S60°W 6.73 CHS. (444.18 FT.). MARKED A 50" OAK S09°30'E 10.104 CHS. (666.86 FT.) AND AN 18" OAK S41°05'W 6.657 CHS. (439.36 FT.). SET A 5/8" IRON ROD S00°54'E 8.656 CHS. (571.30 FT.).
- [03] CORNER RESTORATION BOOK NO. 1, PAGE 76 BY W. C. GALLOWAY, C.S., DATED FEBRUARY 26, 1914. A 3/4" PIPE. FOUND A 30" OAK STUMP (GLO BT) S60°W 6.73 CHS. (444.18 FT.). MARKED A 50" OAK S09°30'E 10.104 CHS. (666.86 FT.) AND AN 18" OAK S41°05'W 6.657 CHS. (439.36 FT.).
- [04] CORNER RESTORATION NO. 1745. TRANSCRIBED FROM RECORD [03] AND MAY CONTAIN ERRORS AND/OR OMISSIONS.
- [05] ROAD NO. 338, RECORD OF ROADS (BOOK 2, PAGE 329) BY W. C. GALLOWAY, C.S., DATED MARCH 4, 1914. FOUND A 3/4" PIPE.
- [06] COUNTY SURVEY NO. 1221 (OLD NO. 304) FIELD NOTES (FIELD BOOK 70, PAGE 16) BY W. C. GALLOWAY, C.S., NO DATE GIVEN. NO PIPE SET. FOUND A 30" OAK STUMP (GLO BT) S59°39'W 6.73 CHS. (444.18 FT.), A 50" OAK (CSBT) S09°30'E 10.104 CHS. (666.86 FT.) AND AN 18" OAK S38°49'W 6.667 CHS. (439.36 FT.).
- [07] BENTON COUNTY MAP NO. 13-5-00012 BY W. C. GALLOWAY, C.S., DATED JULY 8, 1944. CORNER TIED, BUT NOT DESCRIBED.
- [08] COUNTY SURVEY OF ROAD NO. 35210 LOOSE LEAF NOTES BY LEEVED AND WARREN, COUNTY SURVEY CREW, DATED DECEMBER 9, 1976. FOUND 3/4" PIPE.
- [09] COUNTY SURVEY NO. 6645 BY J. BLAIR, C.S., DATED DECEMBER 9, 1976. FOUND A 3/4" PIPE. SET A 5/8" REBAR S04°01'54"W 570.06 FT.
- [10] LOOSE LEAF CORNER RESTORATION NOTES BY FOSTER AND MCDOWELL, COUNTY SURVEY CREW, DATED MAY 30, 1986. FOUND A 3/4" PIPE, 4" BELOW THE SURFACE. FOUND A 64" OAK (CSBT) S09°27'56"E 666.09 FT., A 5/8" ROD S04°01'46"W 570.02 FT. MARKED A 51" OAK S57°43'14"W 498.97 FT., MARKED "1/4S14BT".
- [11] CORNER RESTORATION NO. 3395 BY A. FOSTER ENGINEERING TECH., DATED SEPTEMBER 2, 1986. FOUND A 3/4" PIPE, 4" BELOW THE SURFACE. FOUND A 64" OAK (CSBT) S09°27'56"E 666.09 FT., A 5/8" ROD S04°01'46"W 570.02 FT. MARKED A 51" OAK S57°43'14"W 498.97 FT., MARKED "1/4S14BT".
- [12] COUNTY SURVEY NO. 8630 BY T. PARSONS, P.L.S., DATED JUNE 20, 1992. FOUND A 3/4" I.P.

**NOTES:**

THIS IS A MICROSOFT WORD 2000 DOCUMENT NAMED "35600440" CREATED FROM A BOILER PLATE DOCUMENT NAMED "HISTORY", WHICH HAS A STYLESHEET NAMED "CORNER" ATTACHED TO IT.

FIRM/AGENCY: BENTON COUNTY SURVEYOR'S OFFICE  
ADDRESS: 360 S.W. AVERY AVE. CORVALLIS OR 97333; PH. 766-6821  
RESEARCH BY: BERNARD S. ALTENBACH, ENGINEER/SURVEY TECH.  
DATA ENTRY BY: SAME

**BENTON COUNTY CORNER RESTORATION FORM, PAGE 1 OF 2, 135600440R3**  
**SEE CORNER HISTORY FORM FOR RECORDS ETC.**

CORNER RESTORATION FIELD BOOK NUMBER 25 PAGE(S) 17 DATE 03/26/2007  
TOWNSHIP 13 SOUTH, RANGE 5 WEST, WILLAMETTE MERIDIAN; SECTION 13 CORNER WEST 1/4  
DONATION LAND CLAIM NONE CORNER N/A  
CONDITION REPORT     ; REFERENCED OUT     ; RENEWED XX; SURVEYED IN     

**LOCATION AND COMMENTS:**

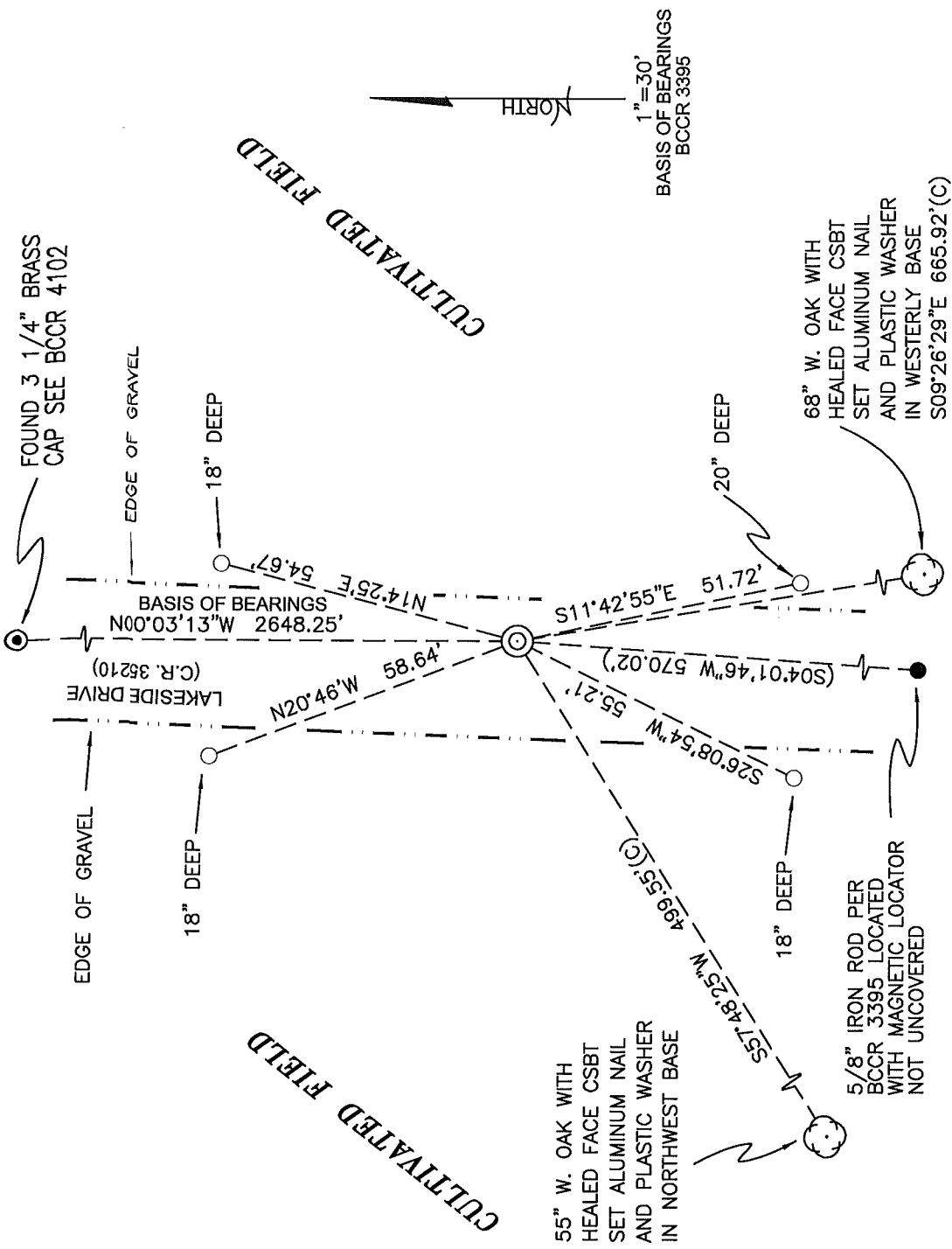
CORNER IS LOCATED IN THE EASTERLY WHEEL TRACK OF LAKESIDE DRIVE (COUNTY ROAD NO. 35210). TO REACH CORNER FROM THE JUNCTION OF SMITH LOOP AND LAKESIDE DRIVE, TRAVEL SOUTHERLY ON LAKESIDE DRIVE FOR 0.50 MILES TO CORNER. CORNER IS GOOD FOR PREMARKING AND GPS CONTROL.

**MONUMENTS AND ACCESSORIES FOUND (CONDITION AND SOURCE):**

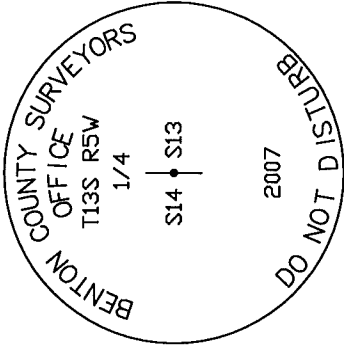
1. FOUND 3/4" X 40" IRON PIPE, 7" BELOW ROAD SURFACE FOR CORNER POSITION. PIPE WAS FOUND IN PLUMB POSITION AND FIRMLY SET.  
(SET POST PER RECORD [01]).  
(SET 3/4" PIPE FROM GLO OAK STUMP PER REDCORDS [02] AND [03]).  
(FOUND 3/4" PIPE PER RECORDS [05], [08] - [12]).
2. FOUND 3 1/4" BRASS DISK IN MONUMENT BOX AT THE SECTION CORNER COMMON TO SECTIONS 11, 12, 13, AND 14, N00°03'13"W, 2648.25 FEET. **BASIS OF BEARINGS FOR THIS RESTORATION.**  
(SET POST, NORTH, 2640 FEET PER RECORD [01]).  
(1 1/4" PIPE, NORTH, 2648.09 FEET PER RECORD [03]).  
(1/2" PIPE, N00°03'13"E, 2648.32 FEET PER RECORD [09]).  
(1/2" PIPE, N00°03'13"W, 2648.21 FEET PER RECORD [11]).  
(FOUND SPIKE, N00°49'02"E, 2648.26 FEET PER RECORD [12]).
3. FOUND 68" W. OAK COUNTY SURVEYOR'S BEARING TREE, S09°26'29"E, 665.92 FEET TO CENTER. SET ALUMINUM NAIL AND PLASTIC WASHER IN WESTERLY BASE FOR DISTANCE MEASUREMENT.  
(50" OAK, S9°30'E, 666.86 FEET PER RECORDS [02], [03] AND [06])  
(64" W. OAK, S9°28'E, 666.09 FEET PER RECORD [11]).
4. FOUND 55" W. OAK WITH HEALED FACE, S57°48'25"W, 499.55 FEET TO CENTER. SET ALUMINUM NAIL AND PLASTIC WASHER IN NORTHWEST BASE FOR DISTANCE MEASUREMENT.  
(BLAZED AND SCRIBED 51" W. OAK, S57°43'W, 498.97 FEET PER RECORD [11]).

**MONUMENT SET (PROCEDURES AND DESCRIPTION):**

HELD THE 3/4" X 40" IRON PIPE AS SET PER RECORD [02] FOR THE CORNER POSITION. POSITION OF 3/4" PIPE COMPARES WELL WITH THE SECTION CORNER TO THE NORTH AND THE RECOVERED SOUTHWEST BEARING TREE; BOTH OF WHICH WERE SURVEYED TO IN RECORD [02]. REMOVED THE 3/4" IRON PIPE AND SET A 2" X 31 1/2" GALVANIZED IRON PIPE WITH A 3 1/4" BRASS DISK CONCRETED IN THE TOP, 10" BELOW ROAD SURFACE AND MARKED AS SHOWN ON PAGE 2 OF 2. SET A 6 FOOT ORANGE CARSONITE "SURVEY MARKER" POST, 10 FEET EAST OF NEW MONUMENT. WE REMOVED THE 3/4" X 40" IRON PIPE FROM THE AREA.



**MONUMENT DETAIL**



3 1/4" BRASS DISK

**LEGEND**

- SET 5/8" X 30" REBAR WITH YELLOW PLASTIC CAP MKD "BENTON COUNTY SURVEYOR"
- FOUND MONUMENT AS NOTED MEASUREMENT TO CENTER
- (C) GOVERNMENT MONUMENT SET AS SHOWN
- ⊙ GOVERNMENT MONUMENT FOUND AS SHOWN BEARING TREE AS NOTED
- ⊙ C.S.B.T. COUNTY SURVEYORS BEARING TREE
- BCCR BENTON COUNTY CORNER RESTORATION
- ( ) RECORD INFORMATION FROM BCCR 3395

**NEW ACCESSORIES:**

1. SET REBAR (SEE LEGEND) 18" BELOW GROUND LEVEL N14°25'29"E, 54.67 FEET.
2. SET REBAR (SEE LEGEND) 20" BELOW GROUND LEVEL S11°42'55"E, 51.72 FEET.
3. SET REBAR (SEE LEGEND) 18" BELOW GROUND LEVEL S26°08'54"W, 55.21 FEET.
4. SET REBAR (SEE LEGEND) 18" BELOW GROUND LEVEL N20°45'40"W, 58.64 FEET.

**NOTES:**

COMPASS DECLINATION IS 20° EAST. ALL MEASURED DISTANCES AND BEARINGS ARE TO THE CENTER OF THE OBJECT, UNLESS OTHERWISE NOTED. ALL BEARING TREES ARE PAINTED AND HAVE A B.T. TAG ATTACHED, FACING THE CORNER UNLESS OTHERWISE NOTED. ALL NEW BEARING TREES HAVE A PLASTIC WASHER (STAMPED "BENTON COUNTY SURVEYOR CORNER RESTORATION") ATTACHED (BY ALUMINUM NAIL) TO THE FACE, BELOW THE "BT" FOR DISTANCE AND ANGLE MEASUREMENT UNLESS OTHERWISE NOTED. THE DRAWING IS FROM AUTOCAD RELEASE 2006.

THIS RESTORATION WAS PERFORMED AT THE DIRECTION AND APPROVAL OF THE BENTON COUNTY SURVEYOR, David M. Dean

REGISTERED PROFESSIONAL LAND SURVEYOR

3/29/07 David M. Dean

OREGON  
JULY 13, 1984  
DAVID M. DEAN  
2090

FIRM/AGENCY: BENTON COUNTY SURVEYOR'S OFFICE  
ADDRESS: 360 S.W. AVERY AVE. CORVALLIS OR 97333; PH. 766-6821  
PRESENT: DAVID M. DEAN, P.L.S. AND BERNIE ALTENBACH, SURVEY TECH.  
EQUIPMENT: LEICA TCR 1103 WITH TDS SOFTWARE ONBOARD

RENEWAL DATE: 12/31/07