

CORNER FILE TRACKING

H:\Survey\Corners\Misc\Filetrac.doc

11/23/98

CORNER NUMBER
135600640

STEP	HISTORY()	RESTORATION()
Form Prepared, DB	3/20/03	4/1/03
Field Inspection, DB	3/20/03	2/20/03
Form Checked, DB	4/7/03	4/9/03
Form Edited, DB	4/11/03	4/11/03
Form Signed, DB	4/11/03	4/11/03
Authorize Payment, DB	—	—
Archive Digital Files	4/21/03	4/21/03
Collect Documents	4/21/03	4/21/03
Scanned	4/21/03	4/21/03
Copy For Filming		
Filed, DB		
Finish index (count unit)		
Filmed (Archived), DB		

(DB) = Entry needed in database (Access).

COMMENTS:

DATE 03/12/2003TOWNSHIP 13 SOUTH, RANGE 5 WEST, WILLAMETTE MERIDIAN; SECTION 1 CORNER WEST 1/4
DONATION LAND CLAIM NONE CORNER NONE**COMMON CORNER(S):**

EAST 1/4 SECTION 2

RECORDS (INFORMATION IN BOLD ITALICS IS COUNTY STAFFS' INTERPRETATION OF THE RECORD)

BASED ON EXTENSIVE RESEARCH AND RECOVERY OF EVIDENCE, THIS OFFICE HAS DETERMINED THAT MOST GENERAL LAND OFFICE SURVEYORS MEASURED TO THE FACE OF BEARING TREES.

- [01] GENERAL LAND OFFICE (GLO) NOTES BY JAMES FREEMAN, D.S., DATED JANURAY 24, 853. ***SET QU. SEC. POST FROM WHICH A W. OAK 10 IN DIA BEARS N12°W, 54 LKS (35.64 FEET); A W. OAK 15 IN DIA BEARS S25°E, 12 LKS (7.92 FEET)***
- [02] COUNTY SURVEY NO. 420 (OLD NO. 203) FIELD NOTES (FIELD BOOK NO. 11, PAGE 64A) BY BURT WILKES, D.C.S., DATED JANUARY 26, 1914. ***FOUND GLO BEARING TREE, A 16" OAK BEARING N12°W, 0.54 CHAINS, SET 4" X 4" X 30" HEWN OAK POST WITH NEW COUNTY SURVEYOR'S BEARING TREE (CSTB), S70 1/2°E, 0.045 CHAINS (2.97 FEET).***
- [03] BENTON COUNTY CORNER RESTORATION, BOOK 1, PAGE 73 BY BURT WILKES, D.C.S., DATED JANUARY 26, 1914. ***SET HEART OAK STAKE 4" X 4" X 30" FROM WHICH ORIGINAL BEARING TREE, OAK 10" (NOW 16") BEARS N12°W, 54 LKS DIST, MARKED NEW BEARING TREE, OAK, 8" S70 1/2°E, 4.5 LKS DIST. (2.97 FEET).***
- [04] BENTON COUNTY CORNER RESTORATION NO. 1727. ***TRANSCRIBED FROM RECORD NO. [03] AND MAY CONTAIN ERRORS AND/OR OMISSIONS.***
- [05] BENTON COUNTY MAP NO. 13-5-00001 BY BURT WILKES, D.C.S., DATED JANUARY 16 TO JANUARY 29, 1914. ***1 1/2" PIPE AND POST.***
- [06] COUNTY SURVEY NO. 8062 BY VERL MOORE, P.L.S., DATED AUGUST 27, 1987. ***FOUND 1 1/2" IRON PIPE WITH 13" OAK BEARING S70 1/2°E, 2.97 FEET.***

NOTES:

THIS IS A MICROSOFT WORD 2000 DOCUMENT NAMED "35600640" CREATED FROM A BOILER PLATE DOCUMENT NAMED "HISTORY", WHICH HAS A STYLESHEET NAMED "CORNER" ATTACHED TO IT.

FIRM/AGENCY: BENTON COUNTY SURVEYOR'S OFFICE
ADDRESS: 360 S.W. AVERY AVE. CORVALLIS OR 97333; PH. 766-6821
RESEARCH BY: DAVID M. DEAN, P.L.S.
DATA ENTRY BY: DEAN

BENTON COUNTY CORNER RESTORATION FORM, PAGE 1 OF 2, 135600640R2**SEE CORNER HISTORY FORM FOR RECORDS ETC.**CORNER RESTORATION FIELD BOOK NUMBER 21 PAGE(S) 15DATE 03/20/2003TOWNSHIP 13 SOUTH, RANGE 5 WEST, WILLAMETTE MERIDIAN; SECTION 01 CORNER W 1/4DONATION LAND CLAIM NONECORNER NONE

CONDITION REPORT _____;

REFERENCED OUT _____;

RENEWED XX;

SURVEYED IN _____

LOCATION AND COMMENTS:

CORNER IS LOCATED IN A FLAT TIMBERED AREA ON THE WEST SIDE OF AN OXBOW LAKE. TO REACH CORNER FROM THE JUNCTION OF HIGHWAY 99W AND SMITH LOOP ROAD, TRAVEL EASTERLY AND SOUTHERLY ON SMITH LOOP FOR 1.29 MILES; THEN SOUTH (STRAIGHT) ON GRAVEL DRIVEWAY FOR ±200 FEET AND PARK AT JUNCTION OF GRAVEL DRIVEWAY BEARING WESTERLY AND DIRT FARM ROAD BEARING SOUTHERLY; THEN WALK SOUTHEASTERLY FOR ±250 FEET TO CORNER. CORNER IS POOR FOR PREMARKING AND GPS CONTROL.

MONUMENTS AND ACCESSORIES FOUND (CONDITION AND SOURCE):

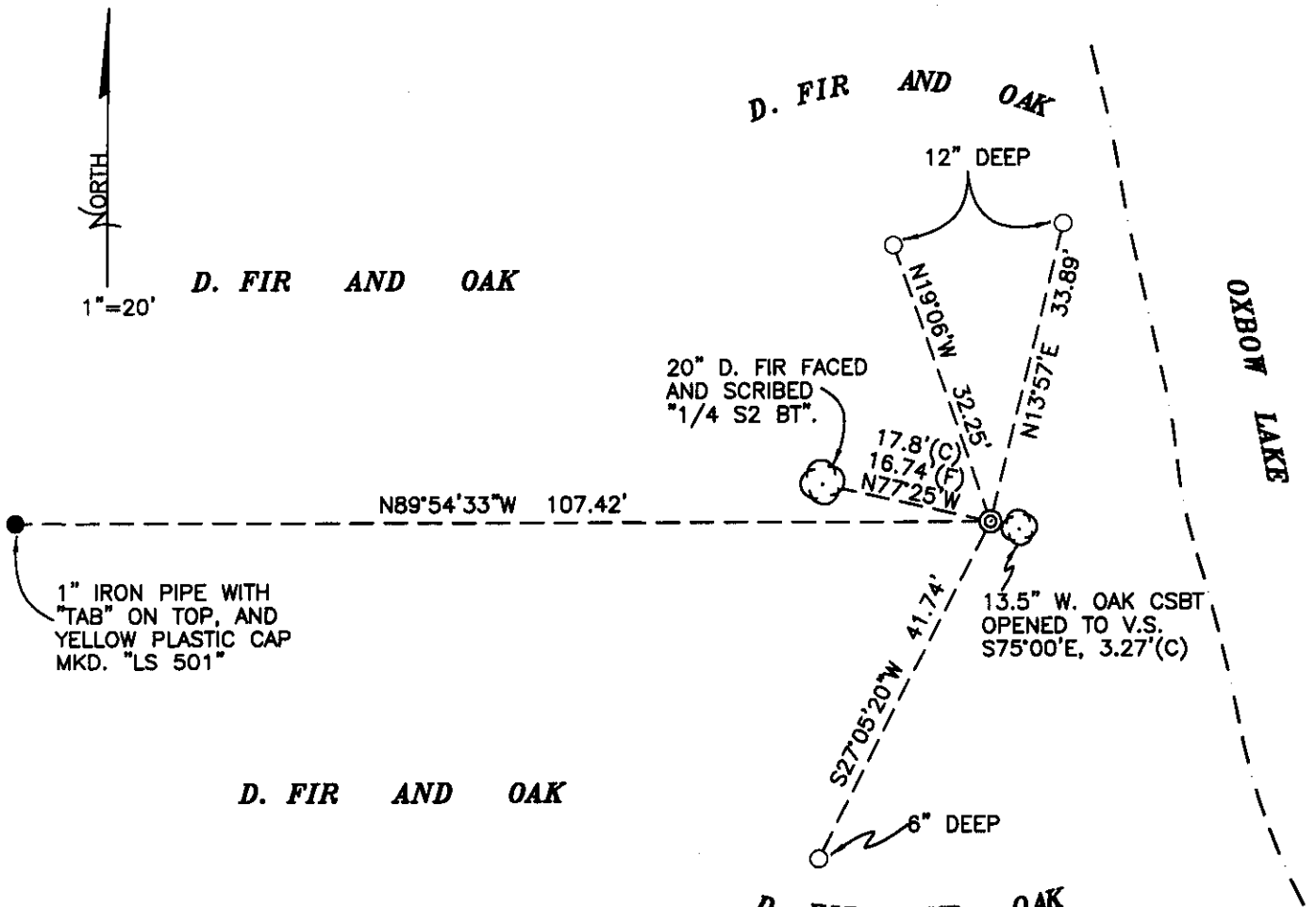
1. FOUND 1 1/2" X 20" IRON PIPE, 9" ABOVE GROUND LEVEL OF UNCERTAIN ORIGIN FOR CORNER POSITION.
(1 1/2" PIPE AND POST PER RECORD [05]).
(1 1/2" PIPE PER RECORD [06]).
2. FOUND 13.5" W. OAK COUNTY SURVEYOR'S BEARING TREE (C.S.B.T.) WHICH WE OPENED TO VISIBLE SCRIBING AT AN 8" FACE, S75°00'E, 3.27 FEET TO CENTER.
(MARKED AN 8" OAK, S70 1/2°E, 2.97 FEET PER RECORD [02]) - [03]).
(FOUND 13" OAK S70 1/2°E, 2.97 FEET PER RECORD [06]).
3. FOUND 1" IRON PIPE WITH A 1 1/2" X 2" X 1/4" TAP ON TOP, 2" BELOW GROUND LEVEL, WITH YELLOW PLASTIC CAP MARKED "LS 501", N89°54'33"W, 107.42 FEET.
(SET 1" X 43" IRON PIPE WITH 1 1/2" X 2" X 1/4" TAP AND YELLOW PLASTIC CAP MARKED "LS 501", WEST, 108.74 FEET PER RECORD [06]).

MONUMENT SET (PROCEDURES AND DESCRIPTION):

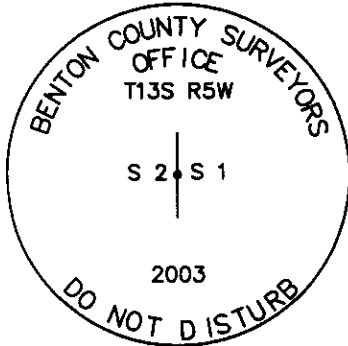
NO EVIDENCE REMAINS OF THE GLO MONUMENT OR ACCESSORIES. FOUND NO EVIDENCE OF HEART OAK POST PER RECORD [02]. ALTHOUGH, THE ORIGIN OF THE 1 1/2" IRON PIPE IS UNCLEAR, WE HELD IT AS THE TRUE CORNER POSITION BASED ON THE FOLLOWING:

1. CLOSE AGREEMENT OF PIPE WITH C.S.B.T. (0.38').
2. AGE OF PIPE APPEARS TO BE CONSISTANT WITH DATE OF RECORD [02] SURVEY.
3. NOTATION ON RECORD [05] OF 1 1/2" PIPE.
4. USAGE OF PIPE BY RECORD [06].

REMOVED IRON PIPE AND SET A 2" X 36" GALVANIZED IRON PIPE WITH A 3 1/4" BRASS DISK CONCRETED IN THE TOP, 1" ABOVE GROUND LEVEL, MARKED AS SHOWN ON PAGE 2 OF 2. BURIED IRON PIPE, IN A HORIZONTAL POSITIN ON THE EAST SIDE OF NEW MONUMENT, 10" BELOW GROUND LEVEL. SET 6 FOOT ORANGE CARSONITE "SURVEY MARKER" POST, 1 FOOT SOUTH OF CORNER.



MONUMENT DETAIL



3 1/4" BRASS DISK

D. FIR AND OAK LEGEND

- SET 5/8" X 30" REBAR WITH YELLOW PLASTIC CAP MKD "BENTON COUNTY SURVEYOR"
- FOUND MONUMENT AS NOTED
- (F) MEASUREMENT TO FACE
- (C) MEASUREMENT TO CENTER
- ⊙ GOVERNMENT MONUMENT SET AS SHOWN
- ⊙ GOVERNMENT MONUMENT FOUND AS SHOWN
- ⊙ BEARING TREE AS NOTED
- C.S.B.T. COUNTY SURVEYORS BEARING TREE
- GLO GENERAL LAND OFFICE

NEW ACCESSORIES:

1. SET REBAR (SEE LEGEND) 6" BELOW GROUND LEVEL, S27°05'W, 41.74 FEET.
2. SET REBAR (SEE LEGEND) 12" BELOW GROUND LEVEL, N19°06'W, 32.25 FEET.
3. SET REBAR (SEE LEGEND) 12" BELOW GROUND LEVEL, N13°57'E, 33.89 FEET.
4. FACED AND SCRIBED A 20" D. FIR "1/4S2BT", N77°25'W, 16.74 FEET TO FACE (17.8 FEET TO CENTER). SET ALUMINUM NAIL AND PLASTIC WASHER IN BLAZE BELOW SCRIBING FOR DISTANCE AND ANGLE MEASUREMENT.

NOTES:

COMPASS DECLINATION IS 20° EAST. ALL MEASURED DISTANCES AND BEARINGS ARE TO THE CENTER OF THE OBJECT, UNLESS OTHERWISE NOTED. ALL BEARING TREES ARE PAINTED AND HAVE A B.T. TAG ATTACHED, FACING THE CORNER UNLESS OTHERWISE NOTED. ALL NEW BEARING TREES HAVE A PLASTIC WASHER (STAMPED "BENTON COUNTY SURVEYOR CORNER RESTORATION") ATTACHED (BY ALUMINUM NAIL) TO THE FACE, BELOW THE "BT" FOR DISTANCE AND ANGLE MEASUREMENT UNLESS OTHERWISE NOTED. THE DRAWING IS FROM AUTOCAD RELEASE 2002.

THIS RESTORATION WAS PERFORMED AT THE DIRECTION AND APPROVAL OF THE BENTON COUNTY SURVEYOR, RW

FIRM/AGENCY: BENTON COUNTY SURVEYOR'S OFFICE
ADDRESS: 360 S.W. AVERY AVE. CORVALLIS OR 97333; PH. 766-6821
PRESENT: DAVID M. DEAN, P.L.S. AND BERNIE ALTENBACK, SURVEY TECH.

REGISTERED
 PROFESSIONAL
 LAND SURVEYOR

David M. Dean 4/11/08

OREGON
 JULY 13, 1984
 DAVID M. DEAN
 2090

RENEWAL DATE: 12/31/03

2-5

Survey #174 cont. ✓ L in East line 7.678 chs. N. of S.E. cor. of John Laase D.L.C. # 53 Tp. 14 S. R. 5 W.
Set 1" rod
Oak 30" in dia. bears V 40° 15' E. 106 chs.
Witnesses G.R. Hall & F.P. Swinson Sept. 21, 1913.

" 174 ✓ S.E. cor. of John Laase D.L.C. # 53 Tp. 14 S. R. 5 W.
Set 3/4 x 2" I bar. N.F. stump std.
Oak 16" in dia. bears S. 33° W. 869 chs.
" 12" " " " N. 51° W. 36 " std.
Witnesses G.R. Hall & F.P. Swinson Sept. 24, 1913.

" 174 ✓ N.E. cor. Jesse Hamby D.L.C. # 51 Tp. 14 - 5
Orig. ^{granite} stone 16" x 16" x 20" Mark Tripple Oak S. 42° W. 513' B.W. 6-7-41
Oak 30" in dia. bears N. 3° E. 304 chs. std. Deadkin Tending
" 11" " " " S. 71° 30' W. 530 "
Witnesses G.R. Hall & F.P. Swinson Sept. 24, 1913.

" 174 ✓ N.W. cor. of Jesse Hamby D.L.C. # 51 Tp. 14 - 5
Set a 3/4" I rod oak stump S. 83° 0' E. 240' C.S. 89 MAD streets
Oak 12" in dia. bears N. 36° 30' E. 350 chs.
" 18" " " " N. 80° E. 121 " std.
" 6" " " " S 40° E. 265 "
Witnesses G.R. Hall & F.P. Swinson Sept. 25, 1913.

Survey #202 ✓ N.E. cor. of John C. Porter Cl. # 50 T. 13 S. R. 5 W.
Orig. stone found 6" under surface, wt 18.10 x 8 x 15, " by
the north side of original stone, from which
a 20" oak anchor post in corner of wire fence was
S. 73° E. 1202 chs. dist. Witness, H.L. Wogner. Jan. 15-14

" #203 ✓ 1/4 sec. cor. lot 36 & 1 T. 13 S. R. 5 W.
Set ~~found~~ 3 bottles in ground 20" deep and one on top of
tree and another on top of this, and stake beside the bottles
from which orig. tree 6" (now 24") bears N. 53° W. 57 1/2 chs. dist
Mark New B.T. Pine 14" S. 70 3/4° E. 405 1/2 chs. dist.
Witnesses, J.G. Smith, C.F. Hahn - J.H. Fisher. Jan. 22, 1914

1/4 sec. cor. lot 1 & 2 T. 13 S. R. 5 W.
Set heart oak stake 4 1/2 x 30" from which
orig. B.T. Oak 10" (now 16") N. 12° W. 54 1/2 chs. dist
Mark New B.T. " 8" " S. 70 3/4° E. 045 " " Jan. 26-1914
Some witnesses as ^{last} above named

✓ N.W. cor. Geo. Fogle Cl. # 46 - T. 13 S. R. 5 W.
Set 2" Gas Pipe 8" below surface from which
Orig. B.T. Pine 20" (now 26") bears N. 33 3/4° W. 156 chs. dist
Mark on Tree " 10" " S. 74 3/4° E. 1403 " "
Same witnesses as last above stated. Jan. 28-1914

$\frac{1}{2}$ -between sections 1 and 2,--Twp.--13 S R 5 W

1727

4

Reestablishment by W. C. Galloway

January 26, 1914

Set heart Oak stake 4" x 4" x 30"

Oak 10" (now 16") in diam bears N. 12°W

54 lks. dist.

Oak 8" in diam bears S 70 $\frac{1}{2}$ ° E

04.5 lks dist.

Witnesses J. G. Smith, C. H. Hahn, and J. H. Fisher

135608640

REMONUMENTING 1/4 21 T13S, R5W

Fd 1 1/2" x 20" 1P 9" ↑ - UNKNOWN ORIGIN

Fd 13.4' W. OAK CS.B.T. BY BURT WILKES

2 IN 1914. WE OPENED UPPER BLAZE TO

VISIBLE SCRIBING @ 8" D.I.A. NO

EVIDENCE REMAINS OF GLO POST OR

ACCESSORIES. NO EVIDENCE COULD BE

FOUND OF 1914 HEART OAK POST

2 BY BURT WILKES. HELD 1 1/2" 1P.

AS REPLACEMENT MON. FOR HEART

OAK POST. REMOVED 1 1/2" 1P. AND

SET 2" x 36" G. 1P W/ 3 1/4" BRASS

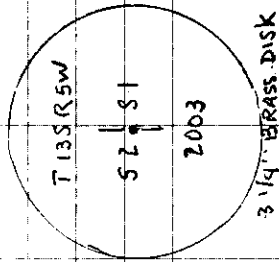
DISK CEMENTED IN TOP, MILD AS SHOWN

1" ↑, BURIED 1 1/2" 1P. IN HORIZ POSITION

10' ↓ ON E SIDE NEW MON.

SET 6' ORANGE CARBONITE POST 1'S

2



CDDY, MILD
50°F 30.2" Hg
LEICA TCR 105/TDS

3/20/03 21/15
D DEAN
B. AUTENBACH

