

**135842010**

## CORNER FILE TRACKING

H:\Survey\Corners\Misc\Filetrac2.doc  
06/15/2003

<b>CORNER NUMBER</b>
<b>135842010</b>

STEP	HISTORY()	RESTORATION()
Form Prepared, DB	07/27/10	08/11/10
Field Inspection, DB	08/03/10	08/03/10
Finish index (count unit)	08/03/10	08/03/10
Counter Index	08/11/10	08/11/10
GIS Index Form	08/11/10	08/11/10
Checked, DB	08/16/10	08/16/10
Form Edited, DB	08/16/10	08/16/10
Form Signed, DB	08/16/10	08/16/10
Authorize Payment, DB	—	—
Archive Digital Files	08/20/10	08/20/10
Collect Documents	08/20/10	08/20/10
PDF File	08/20/10	08/20/10
Copy For Filming	08/20/10	08/20/10
Scanned (PDF TO JASON)		
Filmed (Archived), DB		
Filed, DB		

(DB) = Entry needed in database (Access).

### COMMENTS:

DATE 07/27/2010TOWNSHIP 13 SOUTH, RANGE 05 WEST, WILLAMETTE MERIDIAN; SECTION 09 CORNER N/A  
DONATION LAND CLAIM GEORGE L. BOONE NO. 42 CORNER NORTHEAST**COMMON CORNER(S):**

POINT ON THE SOUTH LINE OF THE JOHN HARRIS DONATION LAND CLAIM (DLC) NO. 43.

**RECORDS (INFORMATION IN *BOLD ITALICS* IS COUNTY STAFFS' INTERPRETATION OF THE RECORD)**

BASED ON EXTENSIVE RESEARCH AND RECOVERY OF EVIDENCE, THIS OFFICE HAS DETERMINED THAT MOST GENERAL LAND OFFICE SURVEYORS MEASURED TO THE FACE OF BEARING TREES.

- [01] GENERAL LAND OFFICE (GLO) NOTES OF THE GEORGE L. BOONE DONATION LAND CLAIM (DLC) NO. 42 BY D. HATHORN, D.S. DATED JANUARY 31, 1854. *SET POST, DEPOSITED CHARRED STAKE AND DUG TRENCH.*
- [02] GENERAL LAND OFFICE (GLO) NOTES OF THE JOHN HARRIS DONATION LAND CLAIM (DLC) NO. 43 BY D. HATHORN, D.S. DATED FEBRUARY 1, 1854. *CORNER TIED, BUT NOT DESCRIBED.*
- [03] COUNTY SURVEY NO. 967 (OLD NO. 117) FIELD NOTES (BOOK 31, PAGE 77) BY W. C. GALLOWAY, C.S., DATED JANUARY 8, 1926. *SET A 1 1/4" PIPE IN LINE WITH TWO STONES, 0.331 CHS. (21.85 FT.) NORTH FROM CLAIM CORNER.*
- [04] CORNER RESTORATION BOOK NO. 1, PAGE 184 BY W. C. GALLOWAY, C.S., DATED JANUARY 8, 1926. *SET A 1/2" GALV. IN CENTER LINE OF ROAD AND AT EAST SIDE OF ROAD RUNNING SOUTH. SET A 1 1/4" PIPE, 0.331 CHS. (21.85 FT.) NORTH OF CORNER. PIPE IS ON LINE WITH GRANITE STONE WEST 10.426 CHS. (688.12 FT.) AND EAST 69.824 CHS. (4608.38 FT.).*
- [05] CORNER RESTORATION NO. 1806. *TRANSCRIBED FROM RECORD [04] AND MAY CONTAIN ERRORS AND/OR OMISSIONS.*
- [06] TRANSIT NOTES OF THE BEAVER CREEK MARKET ROAD NO. 10 BY W. C. GALLOWAY, C.S., DATED MARCH 20, 1940. *1/2" G. PIPE. 1 1/4" PIPE 30 FT. NORTH AND A 1/2" PIPE 30 FT. SOUTH.*
- [07] LOCATION LINE MAP OF THE MUDDY CREEK SECTION OF THE BEAVER CREEK MARKET ROAD NO. 10 BY W. C. GALLOWAY, LOCATING ENGINEER, DATED MARCH 20, 1940. *1/2" PIPE. 1 1/4" PIPE 30 FT. NORTH AND A 1/2" PIPE 30 FT. SOUTH.*
- [08] MAP OF ROUTE 24, BEAVER CREEK MARKET ROAD BY W. C. GALLOWAY, COUNTY ENGINEER, DATED MAY 1940. *1/2" PIPE. 1 1/4" PIPE NORTH AND A 1/2" PIPE SOUTH.*
- [09] BENTON COUNTY MAP NO. 13-5-00009 BY W. C. GALLOWAY, C.S., DATED JANUARY 11, 1926. *1 1/4" PIPE 30 FT. NORTH AT RIGHT ANGLE FROM THE CLAIM CORNER. 1/2" PIPE 30 FT, SOUTH AT RIGHT ANGLE FROM THE CLAIM CORNER.*
- [10] BENTON COUNTY MAP NO. 13-5-00010, NO DATE OR DRAFTSMAN GIVEN. *1 1/4" PIPE NORTH. 1/2" PIPE SOUTH.*
- [11] COUNTY SURVEY NO. 2518 BY CURTIS HANSON, C.S., DATED SEPTEMBER 11, 1953. *FOUND A 1/2" PIPE 0.455 CHS. (30.03 FT.) SOUTH OF THE CLAIM CORNER.*
- [12] LOOSE LEAF NOTES OF THE MUDDY CREEK BRIDGE SITE SURVEY BY HERON, KELLY AND MORRIS, DATED DECEMBER 5, 1967. *FOUND A 1/2" G. PIPE AT THE CLAIM CORNER AND A 1/2" G. PIPE 30 FT. SOUTH OF CORNER.*
- [13] COUNTY SURVEY NO. 6600 BY FRED LEMKE, P.L.S., DATED MARCH 24, 1978. *FOUND BENT 1/2" PIPE, RESET 30.26 FT. SOUTH OF DLC CORNER.*
- [14] COUNTY SURVEY NO. 8598 BY JIM UDELL, P.L.S., DATED MARCH 19, 1992. *FOUND 1/2" I.P. 30 FT. SOUTH OF CLAIM CORNER. 1 1/4" I.P. REMOVED BY RECENT FENCE CLEARING.*

**NOTES:**

THIS IS A MICROSOFT WORD 2003 DOCUMENT NAMED "35842010" CREATED FROM A BOILER PLATE DOCUMENT NAMED "HISTORY", WHICH HAS A STYLESHEET NAMED "CORNER" ATTACHED TO IT.

**FIRM/AGENCY:** BENTON COUNTY SURVEYOR'S OFFICE  
**ADDRESS:** 360 S.W. AVERY AVE. CORVALLIS OR 97333; PH. 766-6821  
**RESEARCH BY:** BERNARD S. ALTENBACH, ENGINEER/SURVEY TECH.  
**DATA ENTRY BY:** SAME



**BENTON COUNTY CORNER RESTORATION FORM, PAGE 1 OF 2, 135842010R2**

**SEE CORNER HISTORY FORM FOR RECORDS ETC.**

CORNER RESTORATION FIELD BOOK NUMBER 28 PAGE(S) 68 DATE 08/03/2010  
TOWNSHIP 13 SOUTH, RANGE 5 WEST, WILLAMETTE MERIDIAN; SECTION 09 CORNER NONE  
DONATION LAND CLAIM GEORGE L. BOONE NO. 42 CORNER NORTHEAST  
CONDITION REPORT     ; REFERENCED OUT     ; RENEWED XX; SURVEYED IN     

**LOCATION AND COMMENTS:**

CORNER IS LOCATED IN A MONUMENT BOX AT THE JUNCTION OF GREENBERRY AND BUCHANAN ROADS. CORNER IS GOOD FOR PREMARKING AND GPS CONTROL.

**MONUMENTS AND ACCESSORIES FOUND (CONDITION AND SOURCE):**

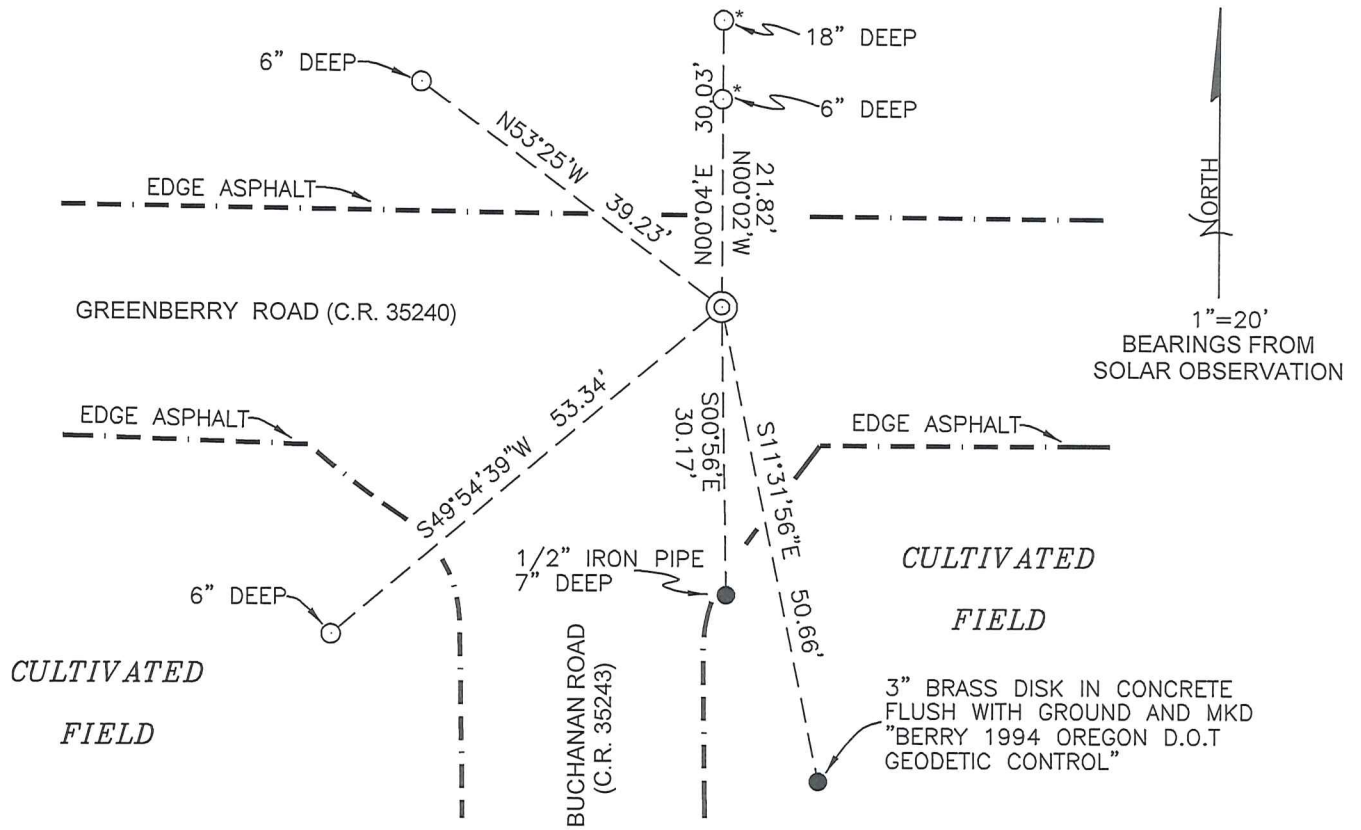
1. FOUND 1/2" GALVANIZED IRON PIPE 16" BELOW GREENBERRY ROAD SURFACE IN A PLUMB AND UNDISTURBED POSITION FOR CORNER POSITION.  
(SET POST PER RECORD [01]).  
(SET 1 1/4" PIPE 21.85 FEET NORTH OF CLAIM CORNER PER RECORD [03]).  
(SET 1/2" GALV. PIPE IN CENTERLINE OF ROAD PER RECORD [04]).  
(1/2" G. PIPE PER RECORD [06]).  
(1/2" PIPE PER RECORDS [07] AND [08]).  
(1 1/4" PIPE 30 FT. NORTH AT RIGHT ANGLE FROM CLAIM CORNER. 1/2" PIPE 30 FT. SOUTH AT RIGHT ANGLE FROM CLAIM CORNER PER RECORD [09]).  
(1 1/4" PIPE NORTH, 1/2" PIPE SOUTH PER RECORD [10]).  
(1/2" PIPE 30.03 FEET SOUTH OF CLAIM CORNER PER RECORD [11]).  
(1/2" PIPE AT CLAIM CORNER AND 1/2" G. PIPE 30 FEET SOUTH PER RECORD [12]).  
(FOUND BENT 1/2" PIPE, RESET 30.26 SOUTH OF DLC CORNER PER RECORD [13]).  
(FOUND 1/2" I.P. 30 FET SOUTH OF CLAIM CORNER PER RECORD [14]).
2. FOUND 1 1/4" RUST RING 12" BELOW GROUND LEVEL, N00°02'W, 21.82 FEET. SET 5/8" X 30" IRON ROD WITH YELLOW PLASTIC CAP MARKED "BENTON COUNTY SURVEYOR" AT CENTER OF RUST RING AND 6" BELOW GROUND LEVEL.  
(SET 1 1/4" PIPE IN LINE WITH 2 STONES, CLAIM CORNER IS SOUTH 21.85 FEET FROM PIPE PER RECORD [03]).  
(SET 1 1/4" PIPE 21.85 FEET NORTH OF CORNER. PIPE IS ON LINE WITH GRANITE STONE WEST 688.12 FEET WEST AND 4608.38 FEET EAST PER RECORD [04]).
3. FOUND 1 1/4" RUST RING 12" BELOW GROUND LEVEL, N00°04'E, 30.03 FEET. SET 5/8" X 30" IRON ROD WITH YELLOW PLASTIC CAP MARKED "BENTON COUNTY SURVEYOR" AT CENTER OF RUST RING AND 18" BELOW GROUND LEVEL.  
(1 1/4" PIPE 30 FEET NORTHERLY PER RECORDS [06] – [08]) AND [10]).  
(1 1/4" PIPE 30 FEET NORTH AT RIGHT ANGLES PER RECORD [09]).  
(1 1/4" I.P. REMOVED BY RECENT FENCE CLERING PER RECORD [14]).
4. FOUND 1/2" IRON PIPE S00°56'E, 30.17 FEET AND 7" BELOW GROUND LEVEL.  
(1/2" G. PIPE 30 FEET SOUTHERLY PER RECORDS [06] – [08], [10] – [12] AND [14]).  
(1/2" PIPE 30 FEET SOUTH AT RIGHT ANGLES PER RECORD [09])  
(FOUND 1/2" PIPE BENT, RESET AT 30.26 FEET SOUTH OF DLC COR. PER RECORD [13]).
5. FOUND 3" BARSS DISK IN CONCRETE, FLUSH WITH GROUND LEVEL, S11°31'56"E, 50.66 FEET. DISK MARKED "BERRY 1994 OREGON D.O.T. GEODETIC CONTROL".

**MONUMENT SET (PROCEDURES AND DESCRIPTION):**

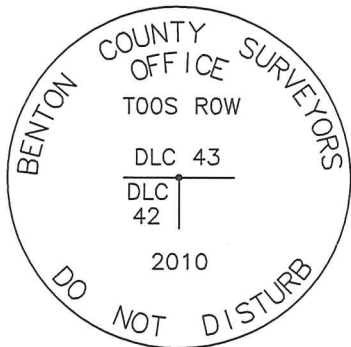
THE EVIDENCE COUNTY SURVEY 967 (RECORD NO. [03]) USED TO POSITION THIS CLAIM CORNER IS UNCLEAR. NONETHELESS WE HAVE HELD THE RECOVERED 1/2" IRON PIPE FOR THE TRUE CORNER POSITION. THIS DECISION WAS BASED ON 85 YEARS OF USAGE AND ACCEPTANCE, AND THE BEST AVAILABLE EVIDENCE FOR THE PERPETUATION OF THE SUBJECT DONATION LAND CLAIM CORNER.

OVER SAID RECOVERED 1/2" IRON PIPE, SET A 2" X 31 1/2" GALVANIZED IRON PIPE WITH A 3 1/4" ALUMINUM DISK CONCRETED IN THE TOP, 5" BELOW THE ROAD SURFACE. PLACED A BOTTOM FLANGED MONUMENT BOX OVER THE PIPE AND DISK, FLUSH WITH ROAD SURFACE.

*CULTIVATED FIELD*



MONUMENT DETAIL



3 1/4" ALUMINUM DISK

LEGEND

- SET 5/8" X 30" REBAR WITH YELLOW PLASTIC CAP MARKED "BENTON COUNTY SURVEYOR"
- FOUND MONUMENT AS NOTED.
- ⊙ GOVERNMENT MONUMENT SET AS SHOWN
- GLO GENERAL LAND OFFICE
- MKD MARKED
- \* FD 1 1/4" RUST RING 12" DEEP - SET IRON ROD IN CENTER OF RUST RING

NEW ACCESSORIES:

1. FOUND 1 1/4" RUST RING 12" BELOW GROUND LEVEL. SET REBAR (SEE LEGEND) IN CENTER OF RUST RING, N00°02'E, 21.82 FEET AND 6" BELOW GROUND LEVEL.
2. FOUND 1 1/4" RUST RING 12" BELOW GROUND LEVEL. SET REBAR (SEE LEGEND) IN CENTER OF RUST RING, N00°04'E, 30.03 FEET AND 6" BELOW GROUND LEVEL.
3. SET REBAR (SEE LEGEND) N53°25'W, 39.23 FEET AND 6" BELOW GROUND LEVEL.
4. SET REBAR (SEE LEGEND) S49°54'39"W, 53.34 FEET AND 6" BELOW GROUND LEVEL.

NOTES:

COMPASS DECLINATION IS 20° EAST. ALL MEASURED DISTANCES AND BEARINGS ARE TO THE CENTER OF THE OBJECT, UNLESS OTHERWISE NOTED. ALL BEARING TREES ARE PAINTED AND HAVE A B.T. TAG ATTACHED, FACING THE CORNER UNLESS OTHERWISE NOTED. ALL NEW BEARING TREES HAVE A PLASTIC WASHER (STAMPED "SURVEYOR MARKER DO NOT REMOVE") ATTACHED BY AN ALUMINUM NAIL TO THE FACE, BELOW THE "BT" FOR DISTANCE AND ANGLE MEASUREMENT UNLESS OTHERWISE NOTED. THE DRAWING IS FROM AUTOCAD RELEASE 2008.

THIS RESTORATION WAS PERFORMED AT THE DIRECTION AND APPROVAL OF THE BENTON COUNTY SURVEYOR *[Signature]*

FIRM/AGENCY: BENTON COUNTY SURVEYOR'S OFFICE  
 ADDRESS: 360 S.W. AVERY AVE. CORVALLIS, OR. 97333; PH. 766-6821  
 PRESENT: DAVID M. DEAN, P.L.S. DAVE MALONE, P.L.S. BERNIE ALTENBACH, SURVEY TECHNICIAN AND SADIE STODER, ENGINEERING INTERN.  
 EQUIPMENT: NIKON NIVO 3.C WITH SURVEY PRO ONBOARD.

REGISTERED  
PROFESSIONAL  
LAND SURVEYOR

8/16/10 *David M. Dean*

OREGON  
JULY 13, 1984  
DAVID M. DEAN  
2090

RENEWAL DATE: 12/31/11



135842010

REMONUMENTING NE GEORGE BOONE DLC 42

T 135 RSW

FD 1/2" G.I.P. 16" DEEP IN ± CTR LINE

GREENBERRY ROAD (2' N & STRIKE). HELD

FOR NE DLC 42 - AS SET BY W.C.G.

FD 1/2" G.I.P. S R/W GREENBERRY, FD

RUST RINGS OF 1 1/4" I.P.S (2185 & 30')

N R/W. SET 5/8" I.R. IN CTR N'LY

RUST RINGS. QUER SAID 1/2" G.I.P. SET

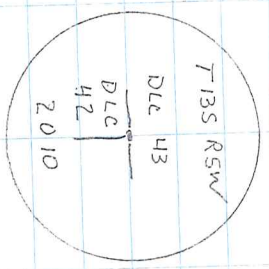
2" x 3 1/2" G.I.P. W/ 3/4" ALUM. DISK

CONC. IN TOP 5" BELOW ROAD SURFACE,

W/ KD AS SHOWN. PLACED A BOTTOM FLANGED

MONUMENT BOX OVER PIPE AND DISK

LEVEL WITH ROAD SURFACE



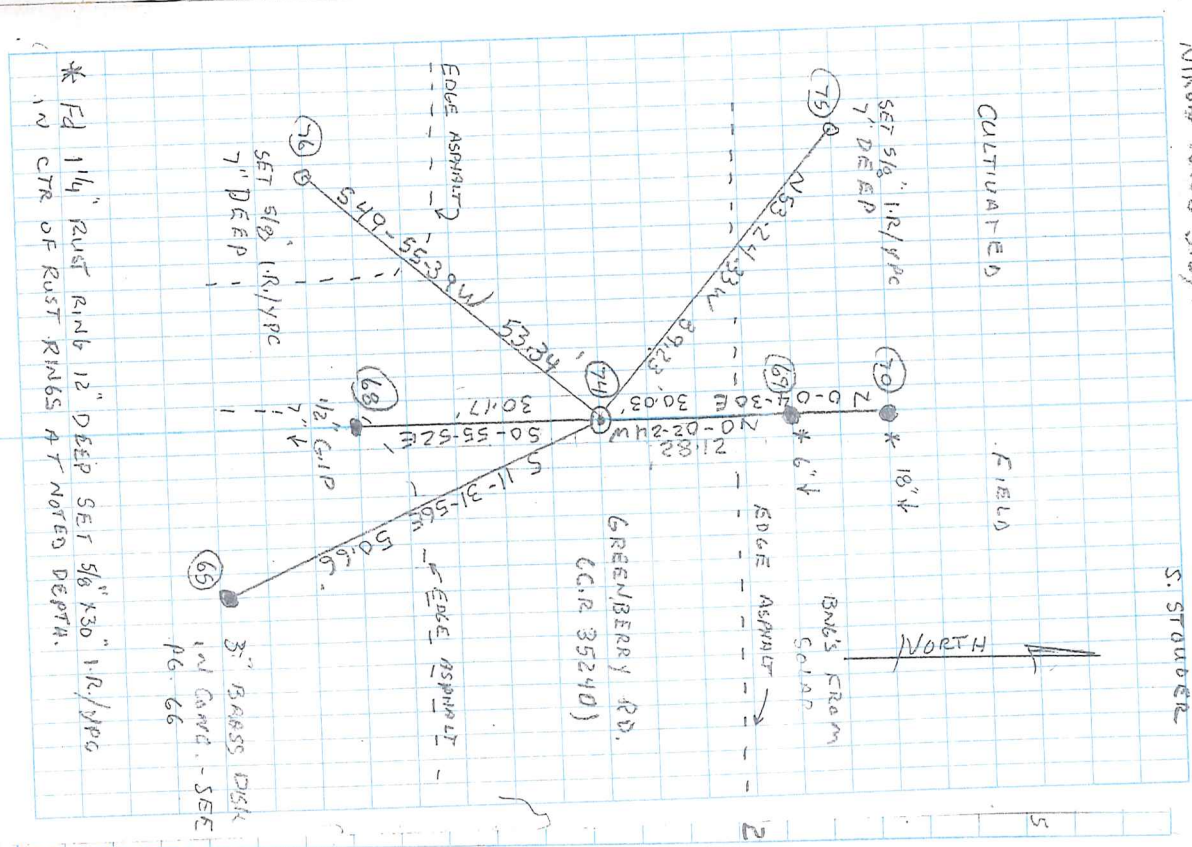
3 1/4" Alum. Disk

70) FD 1/2" I.P. 16" DEEP IN GREENBERRY RD. NE GEORGE BOONE DLC 42

64-65-74

CLEAR W/ 20' F, 300' Hg (Ave)  
Nikon NMD 3x/7x5

8/3/10 28/68  
D. DEAN  
D. MORGAN  
B. ALLENBACH  
S. STAUBER



\* FD 1 1/4" RUST RING 12" DEEP SET 5/8" I.R./YPC IN CTR OF RUST RINGS AT NOTED DEPTH.

C.S. 117  
W.C. Galloway C.S.  
Witness  
W.A. Buchanan  
Jan. 8, 1926.

S.W. cor. of John Harris D.L.C. 43 T. 13-5  
Nothing at corner. W.C. .327 North of corner  
Stone 22"x18"x17" with + on top.  
Set 1 1/4" pipe East 10.426 chs. on line with two granite  
stones, both at the north side of the County road  
Second stone East 80.25 chs.

"

N.E. Corner of Geo. L. Boone D.L.C. 42 T 13-5  
Set 1/2" Galv. at cor. which is in C of road East and West and at East  
side of road running South.  
Set 1/4" pipe .331 North of corner. Pipe is on line with  
Granite Stone West 10.426 and East 69.824

"

S.E. cor. of Geo. L. Boone D.L.C. 42 T 13-5  
1/4 pipe  
Set by J.A. Ganong Witness Claude Buchanan

C.S. 350  
W.W.L.  
Witness.  
Byron Taylor  
Arthur Bester

N.W. cor. Sec. 27 T. 10 S. R. 6 W. W.M.  
Set 1" tube  
Oak stump 30" just cut bears S40°W. 1.31 chs. std.  
Oak 30" " N73 1/2°W. 2.95 "  
Oak double 36x70" " N. 79°E 3.13 "  
Oak 16" " S11°E 4.9 feet

"

1/4 Cor. on west of sec 27 T. 10 S. R. 6 W.  
Set. Oak stake  
Oak 16" Bears N54°E. 4.75 chs. standing  
Oak 7" (1 1/4) " N19°W 1.52 " "

C.S. #107 cont.  
set by W.C. Galloway  
Witnessed by Geo. Thorp  
and Wm. Adams  
Oct. 22, 1913.

Corner to Secs. 13, 14, 23 & 24 T 14 S. R 8 W.  
Set 1/2" shaft orig. corner all trees and stumps found.  
Ash 12" in dia. bears N. 15°E. .82 chs. std.  
Oak 11" " " 56 1/2°E. .283 "  
" 12" " " S. 43°W 3.51 " "  
Ash 15" " " N 8 1/4° W .567 "

C.S. 337  
set by W.W. Lamm  
witnessed by  
Shrigley Apr. 14/1927

S.E. cor. Chatham Hawley Cl. 79, T. 14 S. R. 6 W. W.M.  
Set. 2" pipe from which an  
Oak 10" in diameter bears N15°W. 1.22 chs.  
" 24" " " " S 23 1/2 (25)°E 1.30 "

"

S.W. cor. Lorenzo D. Gilbert Cl. 42 T. 14 S. R. 6 W W.M.  
Set oak stake + 3/4" pipe. From which  
Oak 20" in dia. bears S7 1/4°E 1.06 (1.11) stump hole  
" 20" " " " N 35 1/2°E 2.23 stump  
" 10" " " " N 78°W. 2.16 standing  
marked Laurel 16" " " " S 67°W. .17 chains.



N. E. corner of George L. Boone DLC 42, Twp. 13-5

1806

5

Reestablishment by W. C. Galloway

January 8, 1926

Set  $\frac{1}{2}$ " galvanized pipe at corner which is in centerline of road, east and west and at east side of road running south.

Set  $\frac{1}{4}$ " pipe .331 chains north of corner, pipe is on line with granite stone west 10.426 chains and east 69.824 chains.

Witness W. A. Buchanan