

135843030

CORNER FILE TRACKING

H:\Survey\Corners\Misc\Filetrac2.doc
06/15/2003

CORNER NUMBER
135843030

STEP	HISTORY()	RESTORATION()
Form Prepared, DB	07/26/10	8/21/10
Field Inspection, DB	8/17/10	8/17/10
Finish index (count unit)	8/17/10	8/17/10
Counter Index	8/30/10	8/30/10
GIS Index Form	8/30/10	8/30/10
Checked, DB	9/7/10	9/7/10
Form Edited, DB	9/7/10	9/7/10
Form Signed, DB	9/8/10	9/8/10
Authorize Payment, DB	~	~
Archive Digital Files	9/9/10	9/9/10
Collect Documents	9/9/10	9/9/10
PDF File	9/9/10	9/9/10
Copy For Filming	9/9/10	9/9/10
Scanned	9/9/10	9/9/10
Filmed (Archived), DB		
Filed, DB		

(DB) = Entry needed in database (Access).

COMMENTS:

DATE 07/26/2010

TOWNSHIP 13 SOUTH, RANGE 05 WEST, WILLAMETTE MERIDIAN; SECTION 08 CORNER N/A
 DONATION LAND CLAIM JOHN HARRIS NO. 43 CORNER SOUTHWEST

COMMON CORNER(S):

POINT ON THE NORTH LINE OF THE GEORGE L. BOONE DONATION LAND CLAIM (DLC) NO. 42

RECORDS (INFORMATION IN *BOLD ITALICS* IS COUNTY STAFFS' INTERPRETATION OF THE RECORD)

BASED ON EXTENSIVE RESEARCH AND RECOVERY OF EVIDENCE, THIS OFFICE HAS DETERMINED THAT MOST GENERAL LAND OFFICE SURVEYORS MEASURED TO THE FACE OF BEARING TREES.

- [01] GENERAL LAND OFFICE (GLO) NOTES OF THE GEORGE L. BOONE DONATION LAND CLAIM (DLC) NO. 42 BY D. HATHORN, D.S., DATED JANUARY 31, 1854. *CORNER TIED, BUT NOT DESCRIBED.*
- [02] GENERAL LAND OFFICE (GLO) NOTES OF THE JOHN HARRIS DONATION LAND CLAIM (DLC) NO. 42 BY D. HATHORN, D.S., DATED FEBRUARY 1, 1854. *NO DESCRIPTION OF MONUMENT GIVEN. MARKED A 20" OAK N01°E, 1522 LKS. (1004.52 FT.) AND A 24" OAK S10 3/4°W, 1081 LKS. (713.46 FT.).*
- [03] COUNTY SURVEY NO. 267 (OLD NO. 117) FIELD NOTES (BOOK 10, PAGE 23) BY W. C. GALLOWAY, D.C.S., DATED SEPTEMBER 21, 1911. *STONE NORTH OF CORNER (NO DISTANCE GIVEN).*
- [04] COUNTY SURVEY NO. 967 (OLD NO. 117) FIELD NOTES (BOOK 31, PAGE 77) BY W. C. GALLOWAY, C.S., DATED JANUARY 8, 1926. *22" X 18" X 17" STONE WITH "+" ON TOP, 0.327 CHS. (21.58 FT.) NORTH OF THE S.W. CORNER JOHN HARRIS CL 43.*
- [05] CORNER RESTORATION BOOK NO. 1, PAGE 184 BY W. C. GALLOWAY, C.S., DATED JANUARY 8, 1926. *NOTHING AT CORNER. W.C. 21.58' NORTH OF CORNER, A 22" X 18" X 17" STONE WITH "+" ON TOP. SET A 1 1/4" PIPE EAST 10.426 CHS. (688.12 FT.) ON LINE WITH TWO GRANITE STONES, BOTH AT THE NORTH SIDE OF THE COUNTY ROAD, SECOND STONE EAST 80.25 CHS. (5296.50 FT.).*
- [06] CORNER RESTORATION NO. 1808. *TRANSCRIBED FROM RECORD [05] AND MAY CONTAIN ERRORS AND/OR OMISSIONS.*
- [07] TRANSIT NOTES FOR THE BEAVER CREEK MARKET ROAD NO. 10 BY W. C. GALLOWAY, C.S., DATED MARCH 20, 1940. *22" X 18" X 17" GRANITE STONE, 23.95 FT. NORTH OF ROAD CENTERLINE.*
- [08] MAP OF MUDDY CREEK SECTION OF THE BEAVER CREEK MARKET ROAD NO. 10 BY W. C. GALLOWAY, LOCATING ENGINEER, DATED MARCH 20, 1940. *GRANITE STONE 23.95 FT. NORTH OF ROAD CENTERLINE.*
- [09] MAP OF ROUTE 24, BEAVER CREEK MARKET ROAD BY W. C. GALLOWAY, COUNTY ENGINEER, DATED MAY 1940. *22" X 18" X 17" GRANITE STONE, 22 FT. NORTH OF CORNER.*
- [10] BENTON COUNTY MAP NO. 13-5-00009 BY W. C. GALLOWAY, C. S., DATED JANUARY 11, 1926. *22" X 18" X 17" GRANITE STONE, 0.327 CHS. (21.58 FT.) NORTH OF CLAIM CORNER.*
- [11] BENTON COUNTY MAP NO. 13-5-00010, NO DATE OR DRAFTSMAN GIVEN. *22" X 18" X 17" GRANITE STONE, 22 FT. NORTH OF CORNER.*
- [12] LOOSE LEAF NOTES FOR THE MUDDY CREEK BRIDGE SITE SURVEY BY HERON, KELLY AND MORRIS, DATED DECEMBER 5, 1967. *FOUND 22" X 18" X 17" GRANITE STONE.*
- [13] COUNTY SURVEY NO. 2518 BY CURTIS HANSON, C.S., DATED SEPTEMBER 11, 1953. *FOUND A 22" X 18" X 17" STONE, 0.327 CHS (21.58 FT.) NORTH.*
- [14] COUNTY SURVEY NO. 6600 BY FRED LEMKE, P.L.S., DATED MARCH 24, 1978. *FOUND A STONE WITH A "+", 22.00 FT. NORTH OF THE DLC CORNER.*
- [15] COUNTY SURVEY NO. 9358 BY TYLER PARSONS, P.L.S., DATED NOVEMBER 5, 1998. *FOUND A 22" X 18" X 17" STONE N0°32'47"E, 21.58 FEET.*
- [16] COUNTY SURVEY NO. 9391 BY TYLER PARSONS, P.L.S., DATED APRIL 5, 1999. *FOUND A 22" X 18" X 17" STONE N0°32'47"E, 21.58 FEET..*

NOTES:

THIS IS A MICROSOFT WORD 2003 DOCUMENT NAMED "35843030" CREATED FROM A BOILER PLATE DOCUMENT NAMED "HISTORY", WHICH HAS A STYLESHEET NAMED "CORNER" ATTACHED TO IT.

FIRM/AGENCY: BENTON COUNTY SURVEYOR'S OFFICE
ADDRESS: 360 S.W. AVERY AVE. CORVALLIS OR 97333; PH. 766-6821
RESEARCH BY: BERNARD S. ALTENBACH, ENGINEER/SURVEY TECH.
DATA ENTRY BY: SAME

BENTON COUNTY CORNER RESTORATION FORM, PAGE 1 OF 2, 135843030R2

SEE CORNER HISTORY FORM FOR RECORDS ETC.

CORNER RESTORATION FIELD BOOK NUMBER 28 PAGE(S) 72 DATE 08/17/2010
TOWNSHIP 13 SOUTH, RANGE 5 WEST, WILLAMETTE MERIDIAN; SECTION 09 CORNER NONE
DONATION LAND CLAIM JOHN HARRIS NO. 43 CORNER SOUTHWEST
CONDITION REPORT ; REFERENCED OUT ; RENEWED XX; SURVEYED IN

LOCATION AND COMMENTS:

CORNER IS LOCATED IN GREENBERRY ROAD AT THE JUNCTION OF A PRIVATE DRIVE (KEPPINGER) LEADING NORTH. TO REACH CORNER FROM THE JUNCTION OF BUCHANAN AND GREENBERRY ROADS, TRAVEL WEST ON GREENBERRY ROAD FOR 0.13 MILES TO CORNER. CORNER IS GOOD FOR PREMARKING AND GPS CONTROL.

MONUMENTS AND ACCESSORIES FOUND (CONDITION AND SOURCE):

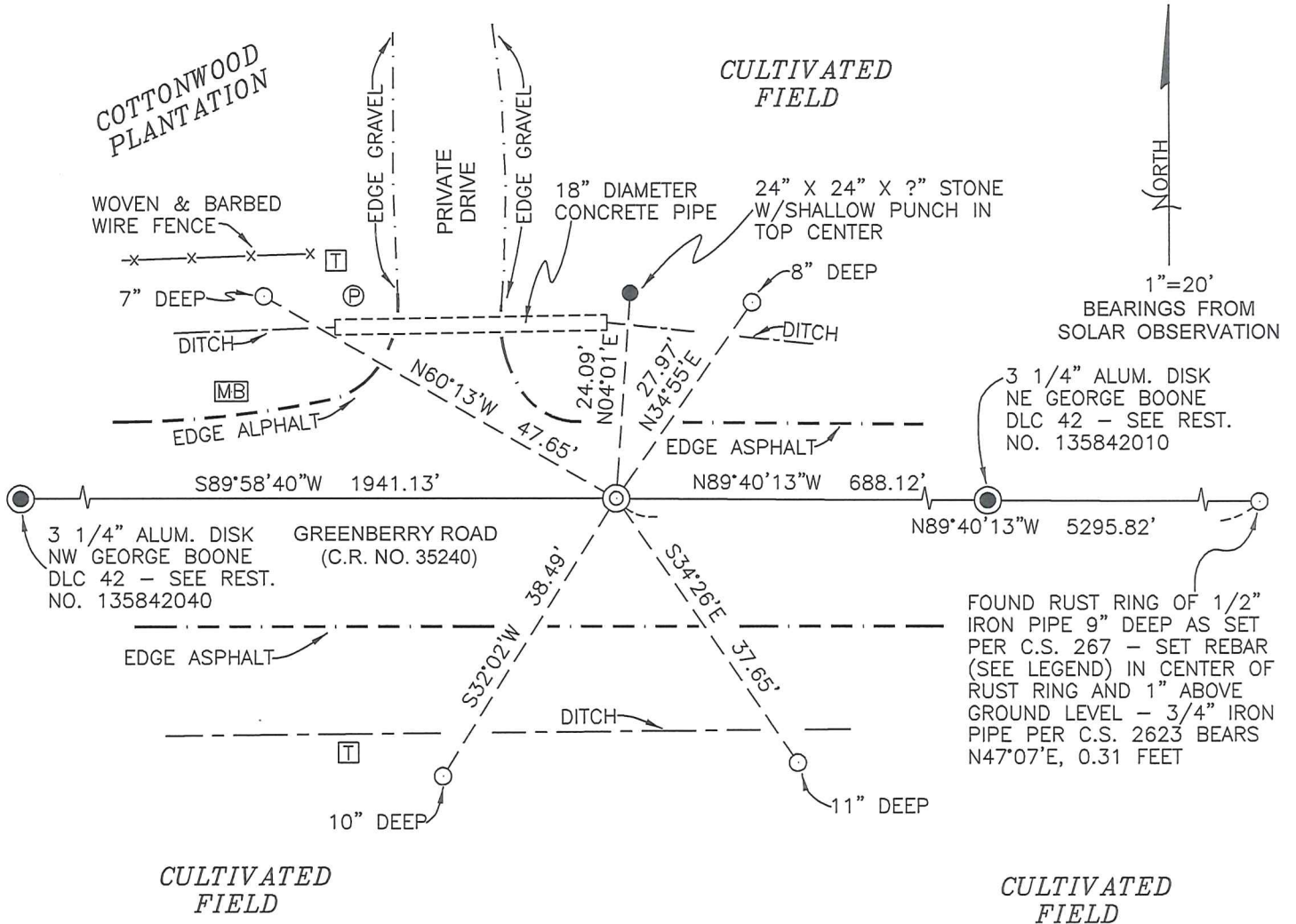
1. FOUND 3 1/4" ALUMINUM DISK AT THE NORTHWEST CORNER OF THE GEORGE BOONE DLC 42, S89°58'40"W, 1941.13 FEET. SEE RESTORATION NO. 135842040.
(WEST, 1939.08 FEET PER RECORD [01]).
(S89°58'40"W, 1941.13 FEET PER RECORDS [15] AND [16]).
2. FOUND NORTHEAST CORNER GEORGE BOONE DLC 42, A 3 1/4" ALUMINUM DISK ON 2" GALVANIZED IRON PIPE, 5" BELOW ROAD SURFACE IN MONUMENT BOX, S89°40'13"E, 688.12 FEET. SEE RESTORATION NO. 135842010.
(EAST, 693.00 FEET PER RECORD [02]).
(EASTERLY, 688.2 FEET PER RECORD [08]).
(S89°45'30"E, 688.12 FEET PER RECORD [11]).
(EASTERLY, 688.12 FEET PER RECORD [13]).
(S89°19'31"E, 688.12 FEET PER RECORD [14]).
3. FOUND RUST RING OF 1/2" IRON PIPE AND SET REBAR (SEE LEGEND), S89°40'13"E, 5295.82 FEET AND 1" ABOVE GROUND LEVEL. A 3/4" IRON PIPE BEARS N47°07'E, 0.31 FEET, 1" BELOW GROUND LEVEL AS SET PER C.S. 2623.
(1/2" IRON PIPE, S89°34'E, 5296.50 FEET PER RECORDS [10] AND [13]).
4. FOUND 24" X 24" X ?" STONE, N4°01'E, 24.09 FEET, WHICH WE MARKED WITH A SHALLOW PUNCH MARK IN TOP CENTER. THIS STONE HAS BEEN DISTURBED BY CONSTRUCTION OF DITCH, 18" CONCRETE PIPE AND DRIVEWAY.
(22" X 18" X 17" STONE WITH "+" ON TOP, NORTH 21.58 FEET PER RECORDS [04], [05], [10] AND [13]).
(22" X 18" X 17" STONE, 22 FEET NORTHERLY PER RECORD [07]).
(GRANITE STONE 22 FEET AT RIGHT ANGLE TO ROAD CENTER PER RECORD [08]).
(GRANITE STONE, 22" X 18" X 17", 22 FEET NORTH OF CORNER PER RECORDS [09] AND [11]).
(FOUND 22" X 18" X 17" STONE N0°32'47"E, 21.58 FEET PER RECORDS [15] AND [16]).

MONUMENT SET (PROCEDURES AND DESCRIPTION):

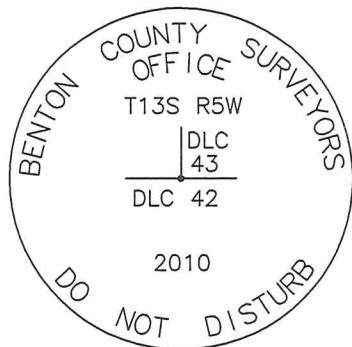
GENERAL LAND OFFICE NOTES BY DENNIS HATHORN, D.S. NOTES TWO BEARING TREES FOR THE SUBJECT CORNER, BUT NO MENTION OF A CORNER MONUMENT. BOTH BEARING TREES ARE NOW MISSING. NO OTHER RECORD VISITS TO THIS CORNER, SET OR MADE MENTION OF A CORNER MONUMENT, OTHER THAN A REFERENCE OR WITNESS STONE TO THE NORTH, WHICH IS PRESENT BUT DISTURBED BY CONSTRUCTION ACTIVITY.

TO CALCULATE A POSITION FOR THIS DONATION LAND CLAIM CORNER WE HELD THE POSITION OF A RECOVERED RUST RING AND THE NORTHEAST CORNER OF THE GEORGE BOONE DLC 42, EXTENDING THIS LINE WESTERLY RECORD DISTANCE OF 688.12 FEET PER RECORDS [11] AND [13]. SEE PAGE 2 OF 2 AND COUNTY SURVEY 10,436 FOR A GRAPHIC REPRESENTATION AND FULL NARRATIVE OF RECOVERED EVIDENCE AND METHODS USED.

AT THE CALCULATED POSITION, WE SET A 2" X 31 1/2" GALVANIZED IRON PIPE WITH A 3 1/4" BRASS DISK CONCRETED IN THE TOP, 6" BELOW ROAD SURFACE AND MARKED AS SHOWN ON PAGE 2 OF 2. SET A BOTTOM FLANGED MONUMENT BOX OVER PIPE AND CAP AND LEVEL WITH ROAD SURFACE.



MONUMENT DETAIL



3 1/4" BRASS DISK

LEGEND

- SET 5/8" X 30" REBAR WITH YELLOW PLASTIC CAP MARKED "BENTON COUNTY SURVEYOR"
- FOUND MONUMENT AS NOTED.
- ⊙ GOVERNMENT MONUMENT SET AS SHOWN
- ⊙ GOVERNMENT MONUMENT FOUND AS SHOWN
- ⊠ TELEPHONE PEDESTAL
- ⊠ MAIL BOX
- ⊠ POWER POLE

NEW ACCESSORIES:

1. SET REBAR (SEE LEGEND) N34°55'E, 27.97 FEET AND 8" BELOW GROUND LEVEL.
2. SET REBAR (SEE LEGEND) S34°26'E, 37.65 FEET AND 11" BELOW GROUND LEVEL.
3. SET REBAR (SEE LEGEND) S32°02'W, 38.49 FEET AND 10" BELOW GROUND LEVEL.
4. SET REBAR (SEE LEGEND) N60°13'W, 47.65 FEET AND 7" BELOW GROUND LEVEL.

NOTES:

COMPASS DECLINATION IS 20° EAST. ALL MEASURED DISTANCES AND BEARINGS ARE TO THE CENTER OF THE OBJECT, UNLESS OTHERWISE NOTED. ALL BEARING TREES ARE PAINTED AND HAVE A B.T. TAG ATTACHED, FACING THE CORNER UNLESS OTHERWISE NOTED. ALL NEW BEARING TREES HAVE A PLASTIC WASHER (STAMPED "SURVEYOR MARKER DO NOT REMOVE") ATTACHED BY AN ALUMINUM NAIL TO THE FACE, BELOW THE "BT" FOR DISTANCE AND ANGLE MEASUREMENT UNLESS OTHERWISE NOTED. THE DRAWING IS FROM AUTOCAD RELEASE 2008.

THIS RESTORATION WAS PERFORMED AT THE DIRECTION AND APPROVAL OF THE BENTON COUNTY SURVEYOR *[Signature]*

**REGISTERED
PROFESSIONAL
LAND SURVEYOR**

9/8/10 *David M. Dean*

FIRM/AGENCY: BENTON COUNTY SURVEYOR'S OFFICE
 ADDRESS: 360 S.W. AVERY AVE. CORVALLIS, OR. 97333; PH. 766-6821
 PRESENT: DAVID M. DEAN, P.L.S. DAVE MALONE, P.L.S. BERNIE ALTENBACH,
 AND OWEN MILLEHRER, SURVEY TECHNICIANS.
 EQUIPMENT: NIKON NIVO 3.C TOTAL STATION WITH SURVEY PRO ONBOARD.

**OREGON
JULY 13, 1984
DAVID M. DEAN
2090**

RENEWAL DATE: 12/31/11

C.S. 117 S.W. cor. of John Harris D.L.C. 43 T.13-5
 W.C. Galloway C.S. Nothing at corner W.C. .327 North of corner
 Witness Stone 22"x18"x17" with + on top. 698.12'
 W.A. Buchanan Set 1/4" pipe East 10.426 chs. on line with two granite
 Jan. 8, 1926. Stones, both at the north side of the County road
 Second stone East 80.25 chs. 5296.50'

" N.E. Corner of Geo. L. Boone D.L.C. 42 T 13-5
 Set 1/2" Galv. at cor. which is in E of road East and West and at East
 side of road running South. Witness Alber Chas.
 21.85' Set 1/4" pipe .331 North of corner. Pipe is on line with
 Granite Stone West 10.426 and East 69.824 4608.30

" S.E. cor. of Geo. L. Boone D.L.C. 42 T 13-5
 1/4 pipe
 Set by J.A. Ganong Witness Claude Buchanan

C.S. 350 N.W. Cor. Sec. 27 T.10S.R.6W. W.M.
 W.W.L. Set 1" tube
 Witness: Oak stump 30" just cut bears 540°W. 1.31 chs. std.
 Byron Taylor Oak 30" " N73 1/2°W. 2.95 "
 Arthur Bester Oak double 36x70 " N.79°E 3.13 "
 Oak 16" " 511°E 4.9 feet

" 1/4 Cor. on west of sec 27 T.10S.R.6W.
 Set. Oak stake
 Oak 16" Bears N54°E. 4.75 chs. standing
 Oak 7" (14) " N19°W 1.52 " "

C.S. #107 cont. Corner to Secs. 13, 14, 23 & 24 T14S.R.8W.
 set by W.C. Galloway Set 1/2" shaft orig. corner all trees and stumps found.
 Witnessed by Geo. Thorp Ash 12" indio. bears N.15°E. .82 chs. std.
 and Wm Adams Oak 11" " " 566 1/2°E. .283 "
 Oct. 22, 1913. " 12" " " -S. 43° W 3.51 " "
 Ash 15" " " N 8 1/4° W .567 "

C.S. 337 S.E. Cor. Chatham Hawley Cl. 79, T.14S. R.6W. W.M.
 set by W. W. Lanum Set. 2" pipe from which an
 witness by Oak 10" in diameter bears N15°W. 2.22 chs.
 Shrigley Apr. 14, 1927 " 24" " " " 5 23 1/2 (25)°E 1.30 "

" S.W. Cor. Lorenzo D. Gilbert Cl. 42 T.14S. R.6W W.M.
 Set oak stake + 3/4" pipe from which
 Oak 20" in dia. bears 57 3/4°E 1.06 (1.11) stump hole
 " 10" " " " N 35 1/2°E 2.23 stump
 " 10" " " " N 78°W. 2.16 standing
 marked Laurel 16" " " " 267°W. .17 chains.

S. W. corner of John Harris DLC 43, Twp. 13-5

1808

Reestablishment by W. C. Galloway

January 8, 1926

Nothing at corner, W. C. .327 chains North of corner

Stone 22" x 18" x 17" with * on top

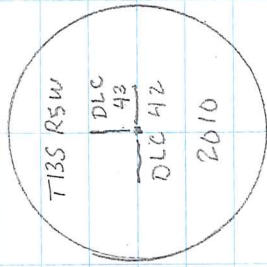
Set 1 $\frac{1}{2}$ " pipe east 10.426 chains on line with two granite stones,
both at the north side of the County road

Second stone east 80.25 chains

Witness W. A. Buchanan

135843030

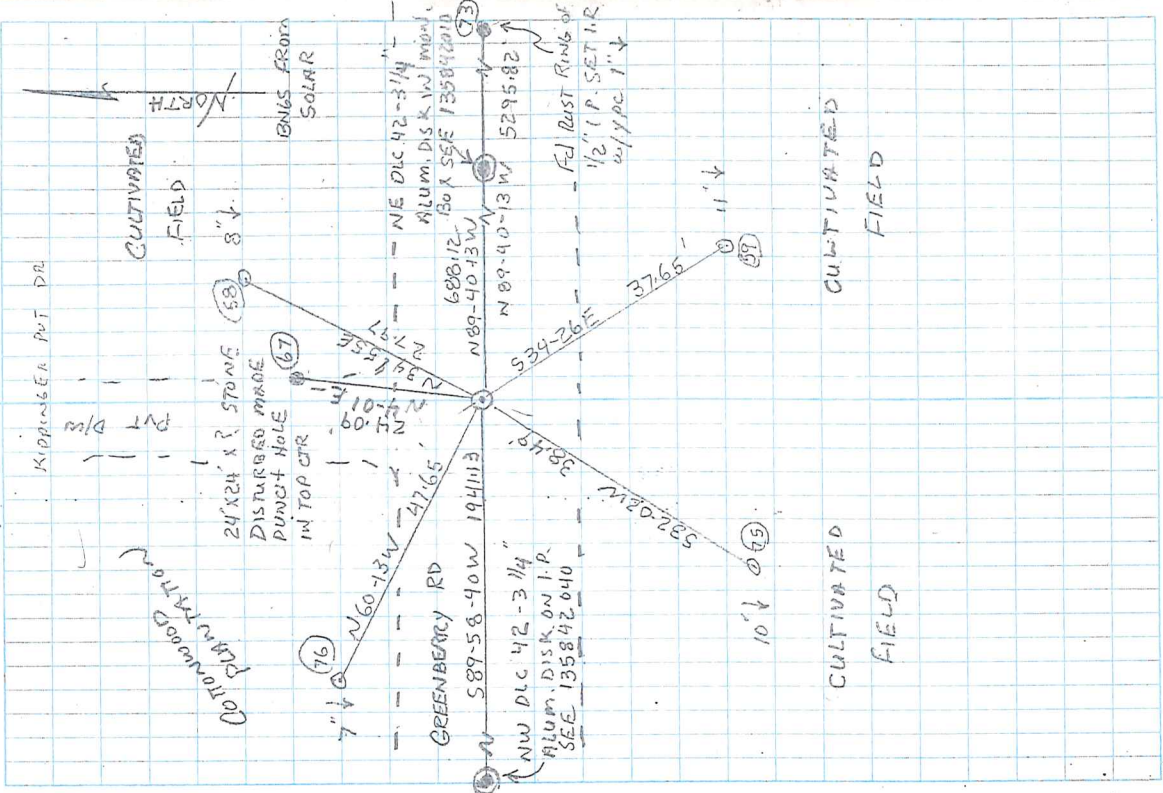
REMONUMENTING SW JOHN HARRIS DLC 43 T135, R5W
 NO MONUMENT FOUND AT CORNER POSITION.
 STONE W.C. (.327 NORTH) IS PRESENT BUT
 DISPLACED NORTHEASTERLY BY CONSTRUCTION
 OF DITCH AND CULVERT (18' CCP) FOR PVT
 D/W. CORNER POSITION CALCULATED BY
 RECONSTRUCTING C.S. 267 AND 967 FIELD
 NOTES FROM RECOVERED MONUMENTS &
 RUST RINGS. HELD NE DLC 42 AND
 RUST RING OF 1/2" I.P. AT ELY EXTENSION
 OF C.R. & (SEE SKETCH) AND EXTENDING
 THIS LINE WLY RECORDED DIST OF 10.426
 CHAINS (688.12') TO COMPUTED COR.
 POSITION. AT SAID COMPUTED POSITION, SET
 2" x 3 1/2" G.I.P. w/ 3/4" BRASS DISK CONC.
 IN TOP 5" BELOW ROAD SURFACE, MK'D AS
 SHOWN. PLACED A BOTTOM FLANGED MON.
 BOX OVER PIPE & CAP FLUSH w/ ROAD
 SURFACE



3/4" Alum. Disk

8/17/10 28/78
 D. DEAN
 D. MALONE

CLEAR WARM
 72°F, 29.8" Hg (AMM)
 NIKON NIVD. 3.C/7.DS



BENTON COUNTY PUBLIC WORKS

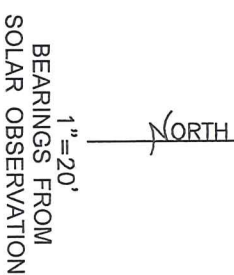
LOCATED IN THE NW 1/4 AND NE 1/4 SECTION 9
AND NE 1/4 SECTION 8, T13S, R5W
SCALE 1" = 20'

DATE: AUGUST 17, 2010

SURVEY FOR

REFERENCES

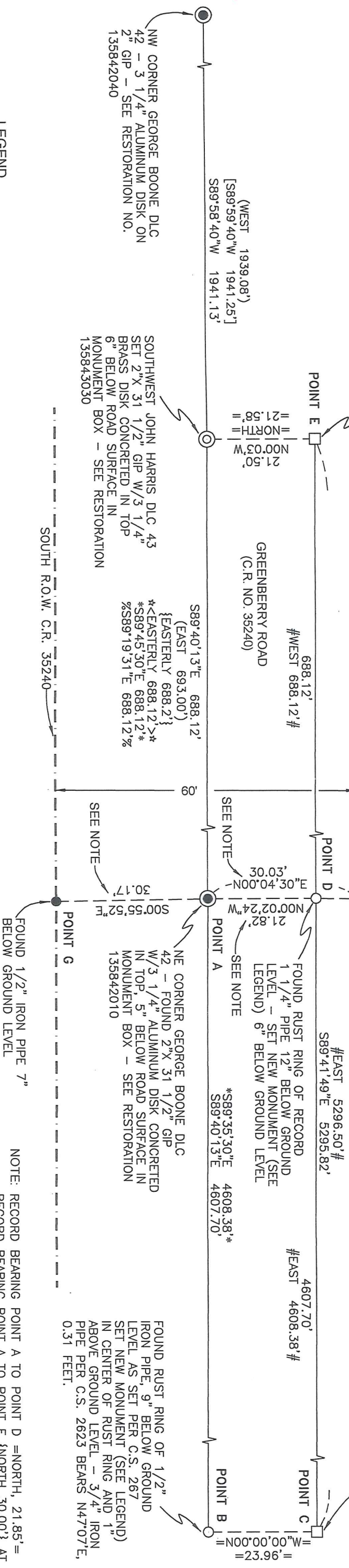
GLO NOTES
C.S. 267
C.S. 9358
C.S. 9391
RESTORATION BK1, PG 184
MARKET ROAD NO. 10
C.S. 2623
C.S. 6600
C.S. 9358
C.S. 9391
BENTON CO. MAP 13-5-00009
BENTON CO. MAP 13-5-00010
C.S. 2518



CALCULATED POSITION OF RECORD GRANITE STONE (22" X 18" X 17") - STONE HAS BEEN DISPLACED BY CONSTRUCTION OF DRIVEWAY, DITCH AND 18" CONCRETE PIPE. PRESENT LOCATION OF STONE BEARS N34°04'E, 3.05 FEET TO PUNCH MARK IN TOP CENTER. STONE MEASURES 24" X 24" X 2"

FOUND RUST RING OF RECORD 1 1/4" PIPE 12" BELOW GROUND LEVEL - SET NEW MONUMENT (SEE LEGEND) 18" BELOW GROUND LEVEL

CALCULATED POSITION OF RECORD GRANITE STONE (14" X 14" X 16") - STONE IS NOW MISSING - POSITION CALCULATED AS NORTH, 0.363 CHS (23.96 FEET) FROM 1/2" PIPE PER RECORD



LEGEND

- SET 5/8" X 30" REBAR WITH YELLOW PLASTIC CAP MARKED "BENTON COUNTY SURVEYOR"
- FOUND MONUMENT AS NOTED.
- CALCULATED POINT NO MONUMENT SET
- ⊙ GOVERNMENT MONUMENT SET AS SHOWN
- ⊙ GOVERNMENT MONUMENT FOUND AS SHOWN
- ⊙ GALVANIZED IRON PIPE
- ⊙ GIP
- ⊙ C.S.
- () GLO
- [] GENERAL LAND OFFICE
- { } RECORD PER GENERAL LAND OFFICE
- < } RECORD PER C.S. 9358 AND C.S. 9391
- > } RECORD PER MARKET ROAD NO. 10
- * } RECORD PER BENTON CO. MAP 13-5-00009
- * } RECORD PER BENTON CO. MAP 13-5-00010
- * } RECORD PER C.S. 2518
- * } RECORD PER RESTORATION BOOK 1, PG 184
- # } RECORD PER C.S. 6600
- % } RECORD PER C.S. 967
- = } DONATION LAND CLAIM
- DLC R.O.W.
- RIGHT-OF-WAY

NARRATIVE

PURPOSE: THE PURPOSE OF THIS SURVEY WAS TO REMONUMENT THE SOUTHWEST CORNER OF THE JOHN HARRIS DLC 43, T13S, R5W.

BASIS OF BEARINGS: THE BASIS OF BEARINGS IS A SOLAR OBSERVATION BY THE HOUR ANGLE METHOD AND OBSERVED APPROXIMATELY 3600 FEET WEST OF THE SOUTHWEST CORNER OF DLC 43.

HISTORY: SOUTHWEST CORNER OF THE JOHN HARRIS DLC 43 WAS ESTABLISHED BY DENNIS HATHORN, DEPUTY SURVEYOR, ON FEBRUARY 1, 1854. NO DESCRIPTION OF A CORNER MONUMENT WAS GIVEN, BUT TWO OAK BEARING TREES WERE NOTED, WHICH ARE NOW MISSING. COUNTY SURVEY 267 BY W. C. GALLOWAY, D.C.S. DATED SEPTEMBER 21, 1911 BEGINS AT THE SW CORNER OF JOHN HARRIS DLC 43 AND NOTES A STONE TO NORTH OF CORNER, BUT NO DISTANCE TO OR SIZE OF STONE WAS GIVEN. THIS SURVEY THEN RUNS EASTERLY FOR 80.25 CHAINS (5296.50 FEET) AND SETS A 1/2" PIPE, WHICH WE HAVE RECOVERED AND NOTED AS "POINT B". COUNTY SURVEY 967 BEGINS AT A 22" X 18" X 17" STONE (POINT D) BETWEEN POINTS "C" AND "E". NUMEROUS OTHER SURVEYS BY BENTON COUNTY SURVEYOR'S OFFICE AND PRIVATE SURVEYORS HAVE USED THE STONE AT POINT "E" AS A WITNESS CORNER TO THE SUBJECT DLC CORNER, WHICH HAS BEEN DISPLACED AS NOTED.

CORNER DETERMINATION: THE SOUTHWEST CORNER OF DLC 43 WAS CALCULATED BY HOLDING POINTS "A" AND "B" AND EXTENDING THIS LINE WESTERLY BY RECORD DISTANCE OF 10.426 CHAINS (688.12 FEET). THIS METHOD COMPARES WELL (0.07 FEET) WITH A CALCULATED SOLUTION HOLDING POINTS "C" AND "D", EXTENDING THIS LINE WESTERLY A RECORD DISTANCE OF 10.426 CHAINS (688.12 FEET) TO POINT "E", THEN RECORD DISTANCE OF SOUTH 0.327 CHAINS (21.58 FEET).

NOTE: RECORD BEARING POINT A TO POINT D = NORTH, 21.85' = RECORD BEARING POINT A TO POINT F {NORTH 30.00'} AT RIGHT ANGLES TO ROAD CENTERLINE
RECORD BEARING POINT A TO POINT G + SOUTH 30.00' + AT RIGHT ANGLES TO ROAD CENTERLINE

BENTON COUNTY PUBLIC WORKS
360 SW AVERY AVE.
CORVALLIS, OR 97333
PH 541-766-6821

REGISTERED
PROFESSIONAL
LAND SURVEYOR

OREGON
JULY 13, 1984
DAVID M. DEAN
2090

RENEWAL DATE: 12/31/11

Benton County
Surveyor's Office

C.S. FILE NO 10436
FILING DATE 9-8-10
FILE SIZE 11X17

9/9/10

David M. Dean