

## CORNER FILE TRACKING

H:\Survey\Corners\Misc\Filetrac.doc

11/23/98

<b>CORNER NUMBER</b>
<b>135845010</b>

STEP	HISTORY()	RESTORATION()
Form Prepared, DB	2/21/03	3/10/03
Field Inspection, DB	2/23/03	2/23/03
Form Checked, DB	3/12/03	3/12/03
Form Edited, DB	3/19/03	3/19/03
Form Signed, DB	3/19/03	3/19/03
Authorize Payment, DB	—	—
Archive Digital Files		
Collect Documents	3/19/03	3/19/03
Scanned	4/3/03	4/3/03
Copy For Filming		
Filed, DB		
Finish index (count unit)		
Filmed (Archived), DB		

(DB) = Entry needed in database (Access).

### COMMENTS:

DATE 02/21/2003TOWNSHIP 13 SOUTH, RANGE 05 WEST, WILLAMETTE MERIDIAN; SECTION 02 CORNER N/A  
DONATION LAND CLAIM JESSE GAGE NO. 45 CORNER NORTHEAST**COMMON CORNER(S):**

NONE

**RECORDS (INFORMATION IN *BOLD ITALICS* IS COUNTY STAFFS' INTERPRETATION OF THE RECORD)**

BASED ON EXTENSIVE RESEARCH AND RECOVERY OF EVIDENCE, THIS OFFICE HAS DETERMINED THAT MOST GENERAL LAND OFFICE SURVEYORS MEASURED TO THE FACE OF BEARING TREES.

- [01] GENERAL LAND OFFICE (GLO) NOTES OF THE JESSE GAGE DONATION LAND CLAIM (DLC) NO. 45 BY DENNIS HATHORN, D.S., DATED OCTOBER 14, 1853. *SET POST. MARKED A 12" OAK N14°W 6LKS. (3.96 FT.), A 14" OAK S68°E 56 LKS. (39.96 FT.) AND A 10" OAK S05°W 114 LKS. (75.24 FT.).*
- [02] ROAD SURVEY NO. 296 FIELD NOTES (FIELDBOOK 9, PAGE 55) BY J. A. GANONG, D.C.S., DATED FEBRUARY 23, 1912. *SET STONE 12"x8"x6". FOUND ALL TREES. MARKED AN 8" FIR N61°20'E 0.147 CHS. (9.70 FT.)*
- [03] CORNER RESTORATION BOOK NO. 1, PAGE 29 BY J. A. GANONG, D.C.S., DATED FEBRUARY 22, 1912. *SET STONE 12"x8"x6" FOR CORNER. FOUND NW AND SE GLO BTS. MARKED AN 8" FIR N61°20'E 0.147 LKS. (9.70 FT.).*
- [04] CORNER RESTORATION NO. 1814. *TRANSCRIBED FROM RECORD [03] AND MAY CONTAIN ERRORS AND/OR OMISSIONS.*
- [05] BENTON COUNTY MAP NO. 13-5-00001 PLATTED BY BURT WILKES, D.C.S., DATED JANUARY 29, 1914. *STONE.*
- [06] BENTON COUNTY MAP NO. 13-5-00002 PLATTED BY W. W. LARSEN, D.C.S., NO DATE GIVEN. *STONE.*
- [07] COUNTY SURVEY NO. 1242 (OLD NO. 203) FIELD NOTES (FIELDBOOK 61, PAGE 17) BY W. C. GALLOWAY, C.S., DATED FEBRUARY 18, 1935. *BEGINNING AT A STONE, THE NE CORNER OF JESSE GAGE DLC NO. 45.*
- [08] COUNTY SURVEY NO. 3340 BY MARTIN BEYERLEIN, L.S., DATED MARCH 18, 1960. *SHOWS CORNER FOUND, NO DESCRIPTION.*
- [09] COUNTY SURVEY NO. 4269 BY JOHN GANNON, L.S., DATED JUNE 13, 1966. *FOUND 24" FIR STUMP WITH SCRIBING. SET 1/2" IRON ROD S61°20'W 9.7 FT. FROM THE SCRIBING.*
- [10] COUNTY SURVEY NO. 5881 BY VERLE MOORE, L.S., DATED FEBRUARY 4, 1975. *SHOWS CORNER, NO DESCRIPTION.*
- [11] COUNTY SURVEY NO. 7804 BY JIM UDELL, L.S., DATED MARCH 27, 1986. *FOUND 12"x8"x6" STONE LAYING ON WEST SIDE OF 5/8" IRON ROD. FOUND 30" ROTTED D. FIR STUMP N61°20'E, 10.0 FT. TO CENTER FROM ROD.*

**NOTES:**

THIS IS A MICROSOFT WORD 2000 DOCUMENT NAMED "35845010" CREATED FROM A BOILER PLATE DOCUMENT NAMED "HISTORY", WHICH HAS A STYLESHEET NAMED "CORNER" ATTACHED TO IT.

**FIRM/AGENCY:** BENTON COUNTY SURVEYOR'S OFFICE  
**ADDRESS:** 360 S.W. AVERY AVE. CORVALLIS OR 97333; PH. 766-6821  
**RESEARCH BY:** BERNARD S. ALTENBACH, ENGINEER/SURVEY TECH.  
**DATA ENTRY BY:** ALTENBACH

**BENTON COUNTY CORNER RESTORATION FORM, PAGE 1 OF 2, 135845010R2****SEE CORNER HISTORY FORM FOR RECORDS ETC.**

CORNER RESTORATION FIELD BOOK NUMBER 21 PAGE(S) 12-13 DATE 02/23/2003  
TOWNSHIP 13 SOUTH, RANGE 5 WEST, WILLAMETTE MERIDIAN; SECTION 2 CORNER NONE  
DONATION LAND CLAIM JESSE GAGE NO. 45 CORNER NORTHWEST  
CONDITION REPORT     ; REFERENCED OUT     ; RENEWED XX; SURVEYED IN     

**LOCATION AND COMMENTS:**

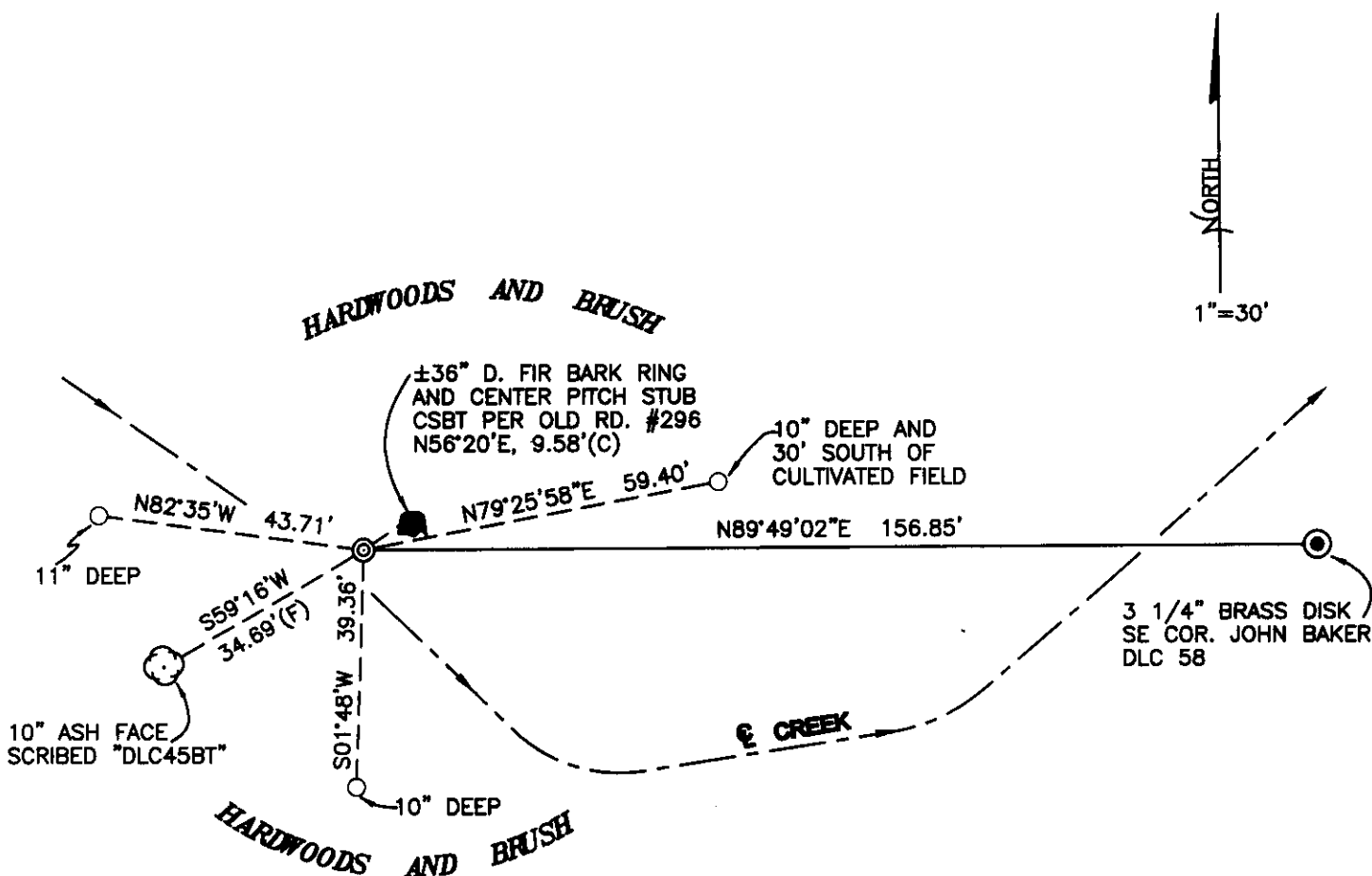
CORNER IS LOCATED IN A NARROW STRIP OF HARDWOODS AND BRUSH, 6 FEET NORTHERLY FROM THE CENTER LINE OF A SMALL INTERMITTENT STREAM G DRAINING FROM OXBOW LAKE AND +100 NORTH OF A LARGE UNCOVERED FARM EQUIPMENT STORAGE AREA. TO REACH CORNER FROM THE JUNCTION OF HIGHWAY 99W AND SMITH LOOP ROAD, TRAVEL EASTERLY ON SMITH LOOP FOR 1.07 MILES, THEN LEFT (EASTERLY) INTO A FARM EQUIPMENT STORAGE AREA FOR ±150 FEET AND PARK; THEN NORTHWEST FOR ±150 FEET TO CORNER. CORNER IS POOR FOR PREMARKING AND GPS CONTROL.

**MONUMENTS AND ACCESSORIES FOUND (CONDITION AND SOURCE):**

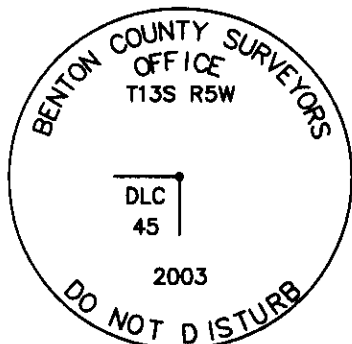
1. FOUND 1/2" IRON ROD, 9" ABOVE GROUND LEVEL WITH A 13" X 8" X 6" UNMARKED STONE LYING ON THE EAST SIDE OF IRON ROD. HELD THE CENTER OF IRON ROD FOR CORNER POSITION.  
(SET 12" X 8" X 6" STONE PER RECORD [02] AND [03]).  
(STONE PER RECORD [05] AND [06]).  
(BEGIN AT STONE PER RECORD [07]).  
(SET 1/2" IRON ROD FROM COUNTY SURVEYOR'S BEARING TREE (CSBT) PER RECORD [09]).  
(FOUND 12" X 8" X 6" STONE LAYING ON WEST SIDE OF 5/8" IRON ROD PER RECORD [11]).
2. FOUND CSBT, A 36" D. FIR BARK RING AND CENTER PITCH STUB, N56°20'E, 9.58 FEET TO CENTER.  
(MARKED AN 8" FIR, N61°20'E, 9.70 PER RECORDS [02] AND [03]).  
(FOUND 24" FIR STUMP WITH SCRIBING, SET 1/2" IRON ROD S61°20'W, 9.7 FEET FROM SCRIBING PER RECORD [09]).  
(FOUND ROTTED D. FIR STUMP N61°20'E, 10.0 FEET TO CENTER, NO SCRIBES PER RECORD [11]).
3. FOUND 3 1/4" BRASS DISK ON 2" GIP AT SOUTHEAST CORNER OF JOHN BAKER DLC NO. 58, N89°49'02"E, 156.85 FEET (SEE RESTORATION NO. 135858020).  
(1 1/4" PIPE S89°58'E, 156.95 FEET PER RECORD [05]).  
(1 1/4" PIPE S89°52'E, 156.95 FEET PER RECORD [07]).

**MONUMENT SET (PROCEDURES AND DESCRIPTION):**

NO EVIDENCE REMAINS OF THE GLO MONUMENT OR ACCESSORIES. THE 1/2" IRON ROD SET BY J. GANNON IN RECORD [09] IS IN GOOD AGREEMENT WITH THE REMAINS OF THE COUNTY SURVEYOR'S BEARING TREE PER RECORDS [02] AND [03]. SAID IRON ROD ALSO FITS NICELY WITH THE SOUTHEAST CORNER OF THE JOHN BAKER DLC NO. 58 AS NOTED ABOVE. THE ORIGINAL POSITION OF THE STONE, SET IN RECORD [02] COULD NOT BE DETERMINED. BASED ON THE ABOVE RECOVERED EVIDENCE, WE BELIEVE THE 1/2" IRON ROD TO BE A GOOD FAITH EFFORT TO PERPETUATE THIS DONATION LAND CLAIM CORNER. HELD THE 1/2" IRON ROD FOR THE TRUE CORNER POSITION. DROVE IRON ROD TO SURFACE LEVEL AND SET A 2" X 36" GALVANIZED IRON PIPE OVER IRON ROD, WITH A 3 1/4" BRASS DISK CONCREATED IN THE TOP, 4" ABOVE GROUND LEVEL, MARKED AS SHOWN ON PAGE 2 OF 2. SET 6' ORANGE CARSONITE "SURVEY MARKER" POST 1 FOOT NORTHEAST OF CORNER.



**MONUMENT DETAIL**



**3 1/4" BRASS DISK**

**LEGEND**

- SET 5/8" X 30" REBAR WITH YELLOW PLASTIC CAP MKD "BENTON COUNTY SURVEYOR"
- FOUND MONUMENT AS NOTED
- (F) MEASUREMENT TO FACE
- (C) MEASUREMENT TO CENTER
- ⊙ GOVERNMENT MONUMENT SET AS SHOWN
- ⊙ GOVERNMENT MONUMENT FOUND AS SHOWN
- ⊙ BEARING TREE AS NOTED
- C.S.B.T. COUNTY SURVEYORS BEARING TREE
- GLO GENERAL LAND OFFICE

**NEW ACCESSORIES:**

1. SET REBAR (SEE LEGEND) 10" BELOW GROUND LEVEL, N79°25'58"E, 59.40 FEET.
2. SET REBAR (SEE LEGEND) 10" BELOW GROUND LEVEL, S1°48'W, 39.36 FEET.
3. SET REBAR (SEE LEGEND) 11" BELOW GROUND LEVEL, N82°35'W, 43.71 FEET.
4. FACE SCRIBED 10" ASH "DLC45BT", S59°16'W, 34.69 FEET TO FACE (35.2 FEET TO CENTER).

**NOTES:**

COMPASS DECLINATION IS 20° EAST. ALL MEASURED DISTANCES AND BEARINGS ARE TO THE CENTER OF THE OBJECT, UNLESS OTHERWISE NOTED. ALL BEARING TREES ARE PAINTED AND HAVE A B.T. TAG ATTACHED, FACING THE CORNER UNLESS OTHERWISE NOTED. ALL NEW BEARING TREES HAVE A PLASTIC WASHER (STAMPED "BENTON COUNTY SURVEYOR CORNER RESTORATION") ATTACHED (BY ALUMINUM NAIL) TO THE FACE, BELOW THE "BT" FOR DISTANCE AND ANGLE MEASUREMENT UNLESS OTHERWISE NOTED. THE DRAWING IS FROM AUTOCAD RELEASE 2002.

THIS RESTORATION WAS PERFORMED AT THE DIRECTION AND APPROVAL OF THE BENTON COUNTY SURVEYOR, RW

REGISTERED  
PROFESSIONAL  
LAND SURVEYOR

*David M. Dean* 3/19/03

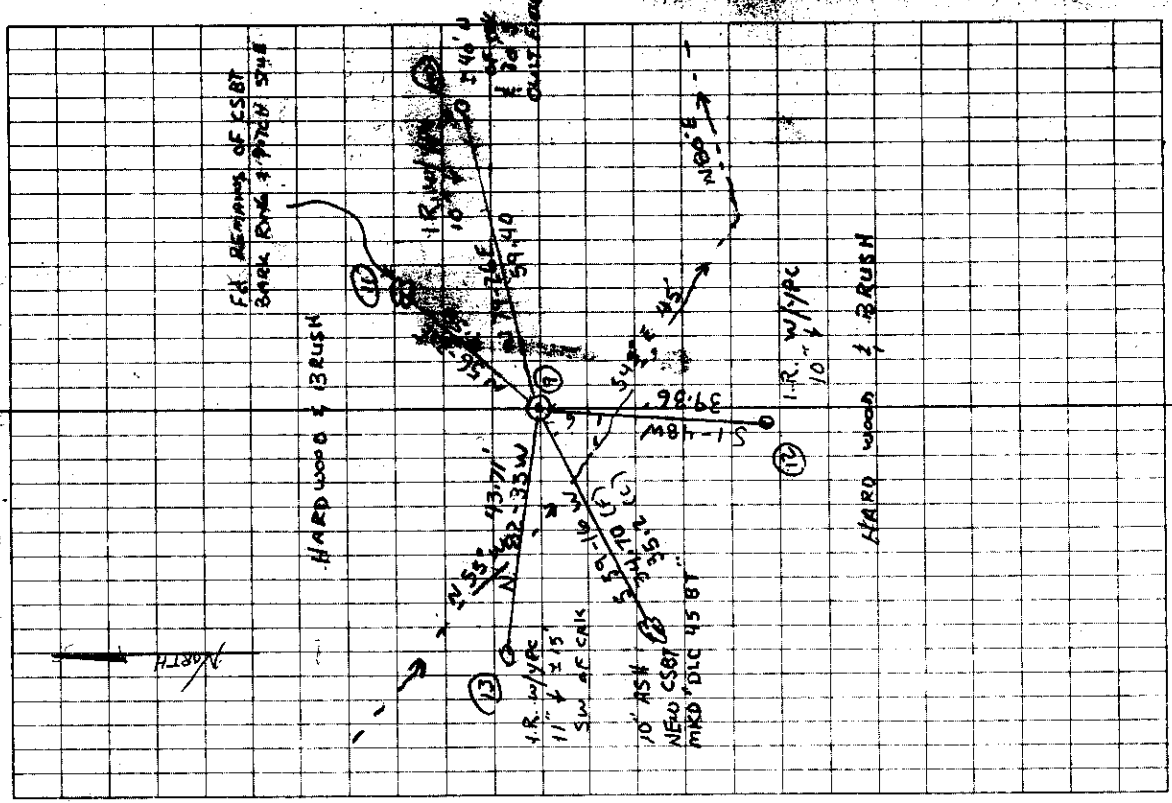
OREGON  
JULY 13, 1984  
DAVID M. DEAN  
2090

RENEWAL DATE: 12/31/03

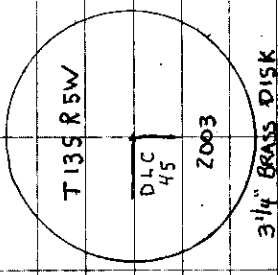
**FIRM/AGENCY:** BENTON COUNTY SURVEYOR'S OFFICE  
**ADDRESS:** 360 S.W. AVERY AVE. CORVALLIS OR 97333; PH. 766-6821  
**PRESENT:** DAVID M. DEAN, P.L.S. AND BERNIE ALTENBACK, SURVEY TECH.

2/24/03 21/13  
 D. DEAN  
 B. ALTENBCK

CLDY, MILC  
 48°F, 29.8" Hg  
 LEICA TCR 105/TDS



135845010  
 REMONUMENTING NE 1/4 GAGE DLC 45 13-5  
 FD 1/2" I.R. 9" ABOVE GROUND AS SET  
 FM CSBT BY J. GANNON - FD  
 REMAINS OF D.FIR CSBT (BARK RING  
 & CTR PITCH STUB)  
 FD 13" X 8" X 6" SANDSTONE LYING ALONG  
 1/2" I.R. - NO MKS ON STONE.  
 HELD 1/2" I.R. FOR COR. POSITION.  
 DROVE I.R. TO GROUND LEVEL AND  
 SET 2" X 3/4" GAP OVER W/ 3/4" BRASS  
 DISK, CONC IN TOPS 4" & MARK AS  
 SHOWN SET 6' ORANGE CARBONITE  
 POST 1' N.W. E. OF COR. REFERENCED  
 AS SHOWN



2-1-9 9) NE COR 1/4 GAGE #45