

CORNER FILE TRACKING

H:\Survey\Corners\Misc\Filetrac.doc

11/23/98

CORNER NUMBER
135849060

STEP	HISTORY()	RESTORATION()
Form Prepared, DB	N/A	8/18/06
Field Inspection, DB	8/15/06	8/15/06
Form Checked, DB	N/A	9/6/06
Form Edited, DB	N/A	9/6/06
Form Signed, DB	N/A	9/1/06
Counter Index	8/15/06	8/15/06
GIS Index	8/15/06	8/15/06
Authorize Payment, DB		
Archive Digital Files	N/A	9/6/05
Collect Documents	8/15/06	8/15/06
Scanned	9/12/06	9/12/06
Copy For Filming		
Filed, DB		
Finish index (count unit)	8/15/06	8/15/06
Filmed (Archived), DB		

(DB) = Entry needed in database (Access).

COMMENTS:

BENTON COUNTY CORNER RESTORATION FORM, PAGE 1 OF 2, 135849060R3

SEE CORNER HISTORY FORM FOR RECORDS ETC.

CORNER RESTORATION FIELD BOOK NUMBER 24 PAGE(S) 41 DATE 08/15/2006
TOWNSHIP 13 SOUTH, RANGE 5 WEST, WILLAMETTE MERIDIAN; SECTION 27 CORNER NONE
DONATION LAND CLAIM ROBERT D. GRIMSLEY NO 49 CORNER NORTHWEST
CONDITION REPORT _____; REFERENCED OUT XX; RENEWED _____, SURVEYED IN _____

LOCATION AND COMMENTS:

CORNER IS LOCATED IN A CULTIVATED FIELD, 170 FEET WEST OF HIGHWAY 99 AND 7 FEET NORTH OF A FARM ACCESS ROAD TO REACH CORNER FROM THE JUNCTION OF THE JUNCTION OF HIGHWAY 99 AND LAKE SIDE DRIVE, WALK 170 FEET WEST OF SAID JUNCTION TO CORNER, 25" BELOW GROUND LEVEL CORNER IS GOOD FOR PERMARKING AND GPS CONTROL

MONUMENTS AND ACCESSORIES FOUND (CONDITION AND SOURCE):

- 1 FOUND 3 1/4" BRASS DISK, 25" BELOW GROUND LEVEL IN CULTIVATED FIELD, AS SET PER BENTON COUNTY RESTORATION NO 3405 AND MARKED AS SHOWN ON PAGE 2 OF 2 FOR CORNER POSITION
(SET 3" OUTSIDE DIAMETER IRON PIPE WITH A 3 1/4" BRASS CAP, 2 FEET BELOW GROUND LEVEL FOR THE NORTHWEST CORNER OF THE R GIMSLEY DLC NO 49 PER RESTORATION NO 3405)
- 2 FOUND SOUTHWEST CORNER OF THE WILEY WINKLE DLC NO 48, A 3/4" IRON PIPE WITH A 5/8" BOLT INSIDE, 4" BELOW ROAD SURFACE, N89°26'E, 1062 49 FEET **BASIS OF BEARINGS FOR THIS RESTORATION.**
(FOUND 3/4" PIPE WITH 5/8" BOLT STUCK INSIDE OF PIPE AT SW CORNER DLC 48, N89°26'W, 1062 48 FEET PER RESTORATION NO 3405)
- 3 FOUND 5/8" IRON ROD WITH YELLOW PLASTIC CAP, 18" BELOW GROUND LEVEL, S44°33'E, 24 79 FEET
(SET 5/8" IRON ROD WITH YELLOW PLASTIC CAP STAMPED "BENTON COUNTY SURVEY", 18" BELOW SURFACE, S44°32'18"E, 24 82 FEET PER RESTORATION NO 3405)
- 4 FOUND 5/8" IRON ROD WITH YELLOW PLASTIC CAP, 18" BELOW GROUND LEVEL, S45°36'W, 25 22 FEET
(SET 5/8" IRON ROD WITH YELLOW PLASTIC CAP STAMPED "BENTON COUNTY SURVEY", 18" BELOW SURFACE, S45°36'44"W, 25 24 FEET PER RESTORATION NO 3405)

MONUMENT SET (PROCEDURES AND DESCRIPTION):

MONUMENT AS SET PER BENTON COUNTY RESTORATION NO 3405 WAS FOUND IN GOOD CONDITION AND FIRMLY SET, NO NEW MONUMENT SET HELD MONUMENT AS SET PER SAID RESTORATION NO 3405 TIED EXISTING REFERENCES AND SET ADDITIONAL REFERENCES FOR THE MAINTANCE AND PERPETUATION OF THE SUBJECT CORNER

BENTON COUNTY CORNER RESTORATION FORM, PAGE 1 OF 2, 135849060R3

SEE CORNER HISTORY FORM FOR RECORDS ETC.

CORNER RESTORATION FIELD BOOK NUMBER 24 PAGE(S) 41 DATE 08/15/2006
TOWNSHIP 13 SOUTH, RANGE 5 WEST, WILLAMETTE MERIDIAN; SECTION 27 CORNER NONE
DONATION LAND CLAIM ROBERT D. GRIMSLY NO 49 CORNER NORTHWEST
CONDITION REPORT _____, REFERENCED OUT XX, RENEWED _____; SURVEYED IN _____

LOCATION AND COMMENTS

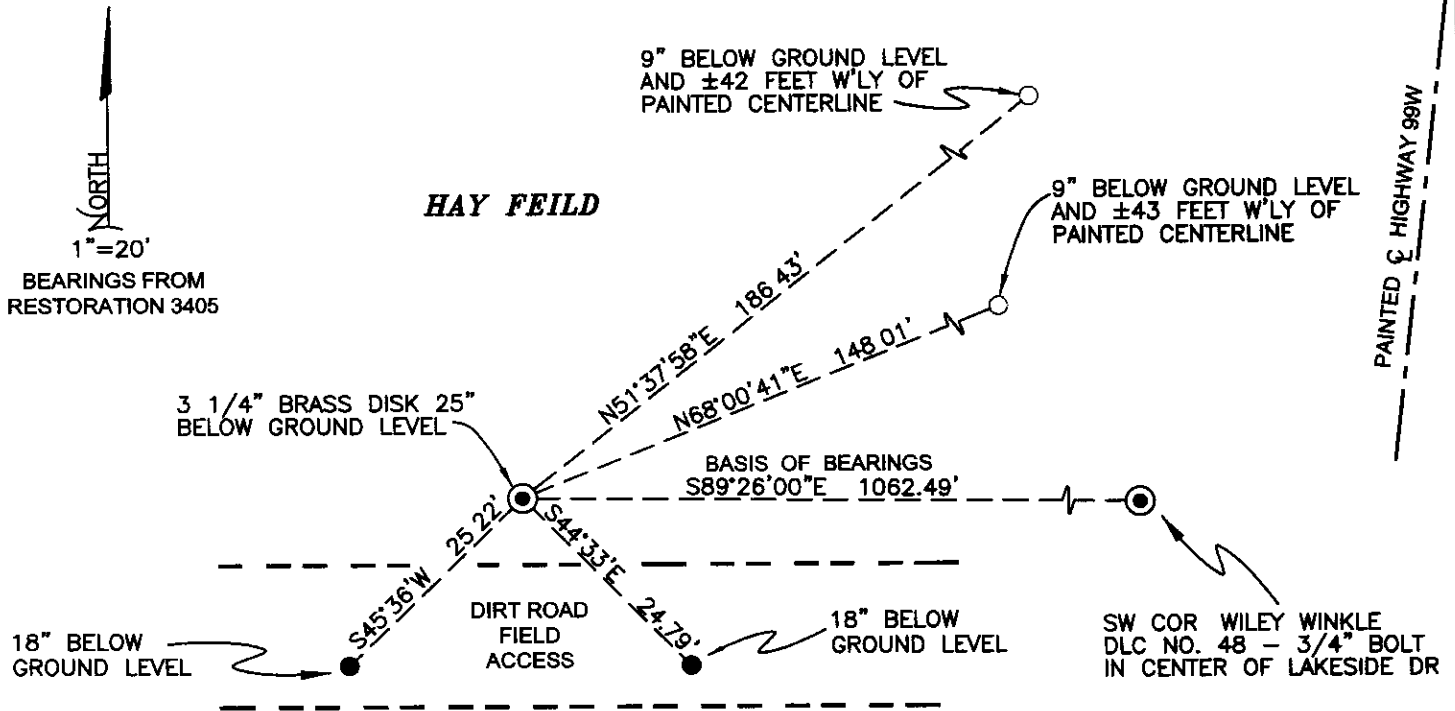
CORNER IS LOCATED IN A CULTIVATED FIELD, 170 FEET WEST OF HIGHWAY 99 AND 7 FEET NORTH OF A FARM ACCESS ROAD TO REACH CORNER FROM THE JUNCTION OF HIGHWAY 99 AND LAKE SIDE DRIVE, WALK 170 FEET WEST OF SAID JUNCTION TO CORNER, 25" BELOW GROUND LEVEL CORNER IS GOOD FOR PERMARKING AND GPS CONTROL

MONUMENTS AND ACCESSORIES FOUND (CONDITION AND SOURCE):

- 1 FOUND 3 1/4" BRASS DISK, 25" BELOW GROUND LEVEL IN CULTIVATED FIELD, AS SET PER BENTON COUNTY RESTORATION NO 3405 AND MARKED AS SHOWN ON PAGE 2 OF 2 FOR CORNER POSITION
(SET 3" OUTSIDE DIAMETER IRON PIPE WITH A 3 1/4" BRASS CAP, 2 FEET BELOW GROUND LEVEL FOR THE NORTHWEST CORNER OF THE R GIMSLEY DLC NO 49 PER RESTORATION NO 3405)
- 2 FOUND SOUTHWEST CORNER OF THE WILEY WINKLE DLC NO 48, A 3/4" IRON PIPE WITH A 5/8" BOLT INSIDE, 4" BELOW ROAD SURFACE, N89°26'E, 1062.49 FEET **BASIS OF BEARINGS FOR THIS RESTORATION.**
(FOUND 3/4" PIPE WITH 5/8" BOLT STUCK INSIDE OF PIPE AT SW CORNER DLC 48, N89°26'W, 1062.48 FEET PER RESTORATION NO 3405)
- 3 FOUND 5/8" IRON ROD WITH YELLOW PLASTIC CAP, 18" BELOW GROUND LEVEL, S44°33'E, 24.79 FEET
(SET 5/8" IRON ROD WITH YELLOW PLASTIC CAP STAMPED "BENTON COUNTY SURVEY", 18" BELOW SURFACE, S44°32'18"E, 24.82 FEET PER RESTORATION NO 3405)
- 4 FOUND 5/8" IRON ROD WITH YELLOW PLASTIC CAP, 18" BELOW GROUND LEVEL, S45°36'W, 25.22 FEET
(SET 5/8" IRON ROD WITH YELLOW PLASTIC CAP STAMPED "BENTON COUNTY SURVEY", 18" BELOW SURFACE, S45°36'44"W, 25.24 FEET PER RESTORATION NO 3405)

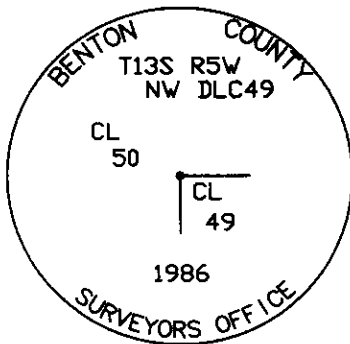
MONUMENT SET (PROCEDURES AND DESCRIPTION):

MONUMENT AS SET PER BENTON COUNTY RESTORATION NO 3405 WAS FOUND IN GOOD CONDITION AND FIRMLY SET, NO NEW MONUMENT SET HELD MONUMENT AS SET PER SAID RESTORATION NO 3405 TIED EXISTING REFERENCES AND SET ADDITIONAL REFERENCES FOR THE MAINTANCE AND PERPETUATION OF THE SUBJECT CORNER



HAY FEILD

MONUMENT DETAIL



3 1/4" BRASS DISK

LEGEND

- SET 5/8" X 30" REBAR WITH YELLOW PLASTIC CAP MKD "BENTON COUNTY SURVEYOR"
- FOUND MONUMENT, 5/8" REBAR WITH YELLOW PLASTIC CAP MKD "BENTON COUNTY SURVEYOR"
- ⊙ GOVERNMENT MONUMENT FOUND AS SHOWN
- GLO GENERAL LAND OFFICE

NEW ACCESSORIES

- 1 SET REBAR (SEE LEGEND) N51°37'56"E 186.43 FEET, 9" BELOW GROUND LEVEL.
- 2 SET REBAR (SEE LEGEND) N68°00'38"E 148.01 FEET, 9" BELOW GROUND LEVEL.

NOTES.

COMPASS DECLINATION IS 20° EAST. ALL MEASURED DISTANCES AND BEARINGS ARE TO THE CENTER OF THE OBJECT, UNLESS OTHERWISE NOTED. ALL BEARING TREES ARE PAINTED AND HAVE A B.T TAG ATTACHED, FACING THE CORNER UNLESS OTHERWISE NOTED. ALL NEW BEARING TREES HAVE A PLASTIC WASHER (STAMPED "BENTON COUNTY SURVEYOR CORNER RESTORATION") ATTACHED (BY ALUMINUM NAIL) TO THE FACE, BELOW THE "BT" FOR DISTANCE AND ANGLE MEASUREMENT UNLESS OTHERWISE NOTED. THE DRAWING IS FROM AUTOCAD RELEASE 2006.

THIS RESTORATION WAS PERFORMED AT THE DIRECTION AND APROVAL OF THE BENTON COUNTY SURVEYOR, David M. Dean

FIRM/AGENCY BENTON COUNTY SURVEYOR'S OFFICE
 ADDRESS 360 S.W. AVERY AVE CORVALLIS OR 97333; PH. 766-6821
 PRESENT BERNIE ALTENBACH AND BRADLEY BOWSHER, SURVEY TECHS
 EQUIPMENT LIECA 1105 TOTAL STATION WITH TDS ON BOARD

REGISTERED
PROFESSIONAL
LAND SURVEYOR

9/1/06 David M. Dean

OREGON
JULY 13, 1984
DAVID M. DEAN
2090

RENEWAL DATE: 12/31/07

135847060

REFERENCING N/W CORNER DLC 49

FOUND 3/4" BRASS CAP, 26" BELOW GROUND LEVEL. BRASS CAP IS 170' WEST OF HWY 99 AND 7' NORTH OF A DIRT ACCESS RD

FD 2 CS BEARING OBJECTS

BASIS OF BEARING IS FROM THE NW COR. OF DLC 49 TO THE SW COR. DLC 48. SW COR. DLC 48 IS A 3/4" BOLT IN & LAKE SIDE DR, 4" BELOW RD. SURFACE



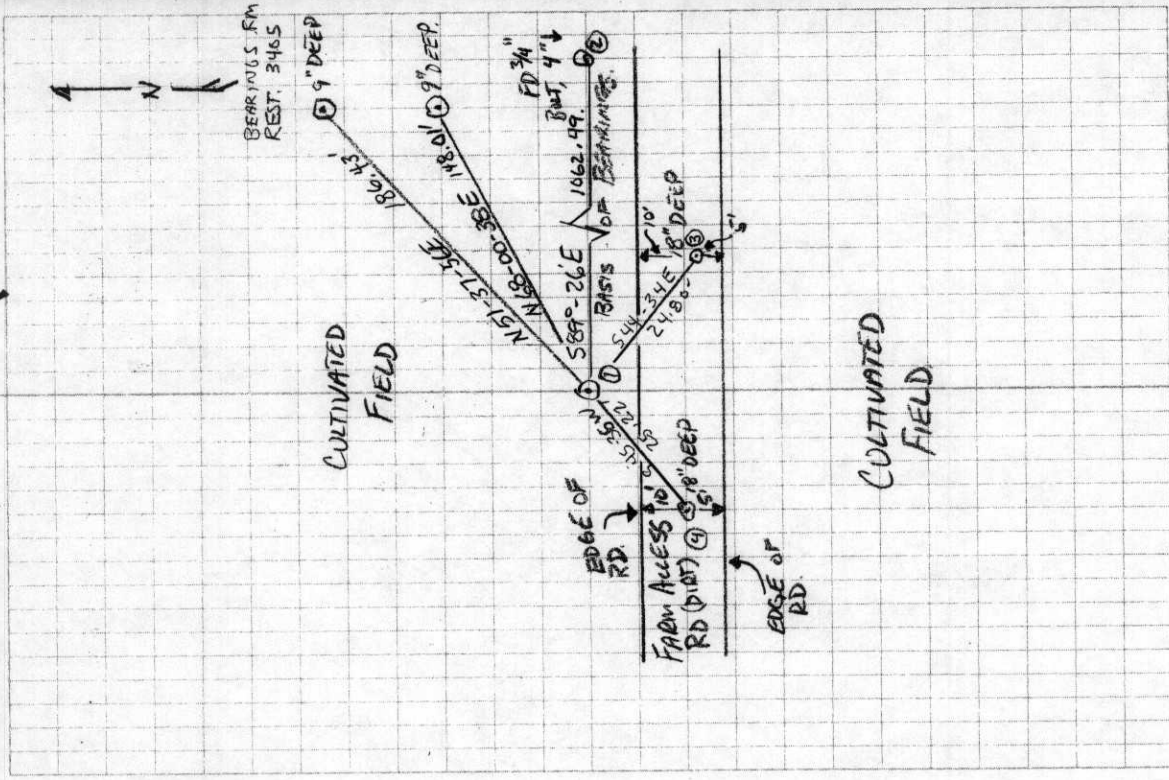
FD 3/4" BRASS DISK

CLEAR/NAAM

LIECA TCR 1105/TDS

S-15-06
B. ALTENBACH
B. BOWEN

29/41



C.S. #245 cont.
~~#277~~

by W.C. Gallaway & C.S.

Witnesses

W. M. Grimsley

Monroe Childers &

Oct. 20 & 29, 1919.

S.W. corner of Robert D. Grimsley Cl. 49 T.13-5.
 Set $\frac{3}{4}$ " x 24" bolt.

Cherry tree 4" in dia. bears N. 2° 30' W. .71 chs. std.
 Balm " 32" " " " N. 83° W. .36 " "

Most South S.E. cor. of John E. Porter Cl. #50 T.13-5.
 Set a $\frac{1}{4}$ " pipe West .70 chs.

Corner cones almost in the center of the State road.

N.W. corner of R. D. Grimsley Cl. #49 T.13-5.
 Set @. bottle 6" below surface in ditch. No trees near.

Notch in fence on line S. 89° 26' E. 2.046 chs.

S.E. cor. of Porter cl. S. 89° 26' E. 16.096 chs.

S.E. corner of John E. Porter Cl. 50. Most E. S.E. cor. T.13-5.
 Set a $\frac{5}{8}$ " x 12" iron pin. Set from oak stump N 61° 05' E. 10.37

Bearing of fence N. 0° 40' W.

Anchor Post N. 1° E. .291 chs.

$\frac{1}{4}$ " pipe S. 0° 40' E. .303 "

C.S. #282

Witnesses

S.R. + John

Strow Nov. 11, 1919

$\frac{1}{4}$ sec. cor. between sections 23 & 24 T.14 S. R. 8 W.

Set 1" x 36" pipe. No trees near to be left. Set $\frac{1}{2}$ way on line from sec. corners.

Corner to secs. 23, 24, 25 & 26 T.14-8.

Set a plow standard 24" in length S.W. maple is stump

Maple 14" in dia. bears N. 65° E. .586 chs. std. face measurement.

" 20" " " " S. 79° 50' E. 1.414 " " " " "

Alder 16" " " " S. 29° W. .110

Maple 16" " " " N. 71° W. .859

C.S. #108

Cont.

W.C.G.

Witnesses

C.S. Brumfield &

Wood

N.W. cor. of Allen Hayden Cl. # ~~38~~³⁷ T.13-7.

Set $\frac{1}{4}$ " x 22" shaft orig. cor.

Fir 52" in dia. bears N. 23° E. .265 chs.

" 48" " " " N. 17° W. .488 "

Dead " 72" " " " S. 25° E. .23 " std.

" " 12" " " " N. 74° W. .30 " stump std.

N. W. corner of R. D. Grimsley Cl 49, Twp. 13-5

1823

Reestablishment by W. C. Galloway

October 20, 1919

Set Qt. bottle 6" below surface in ditch, No trees near.

Notch in fence on line S 89° 26' E 2.046 chains

S. E. Corner of Porter Cl bears S 89° 26' E 16.096 chains

Witnesses W. M. Grimsley and Monroe Childers

BENTON COUNTY SURVEYORS OFFICE · CORNER RESTORATION

3405

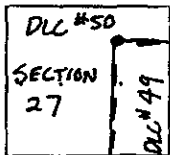
T. 13 S, R. 5 W, W B & M, BENTON COUNTY, OREGON

REPORTED BY PETE M E DOWELL

SECTION DLC # 49 R. GRIMSLEY

TITLE ENGINEERING TECHNICIAN

DATE JUNE 6, 1986



- OFFICIAL CORNER FOUND
- CORNER SET

N.W. CORNER COMMON TO SEC. DLC 49 & 50
 IS 3" O.D. IRON PIPE WITH A 3/4" BRASS CAP 2' BELOW
DESCRIBE

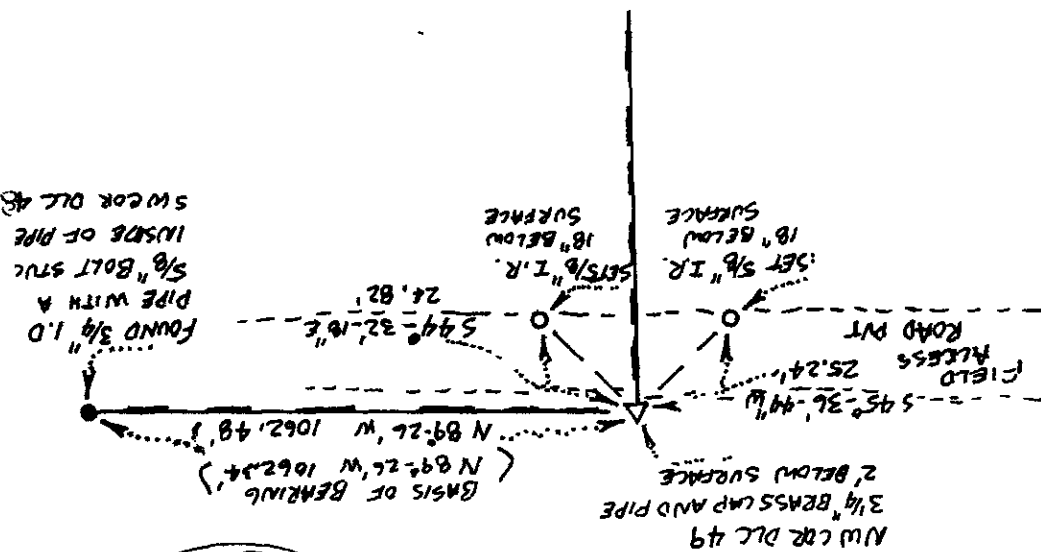
ADDITIONAL INFORMATION

SURFACE. FOUND A QUART BOTTLE (PER COR REST # 1823)
INVERTED WITH THE BOTTOM BROKEN AND THE NECK
FIRMLY IN PLACE 12" BELOW SURFACE. SET PIPE & CAP,
DEPOSITED GLASS NEXT TO PIPE. CORNER LIES 12' N
1/4' FROM FIELD ACCESS ROAD & 170' WEST OF
HWY 99W. ORIGINAL FENCE REFERRED TO IN COR.
REST CARD # 1823 DOES NOT EXIST ANYMORE. NO
SUITABLE BT'S WHERE AROUND, SET (2) 5/8" IRON RODS
AS BEARING OBJECTS.

LEGIBLE MARKS ON BEARING OBJECTS

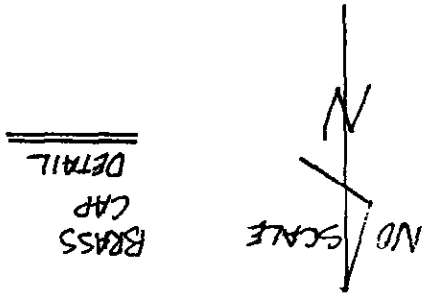
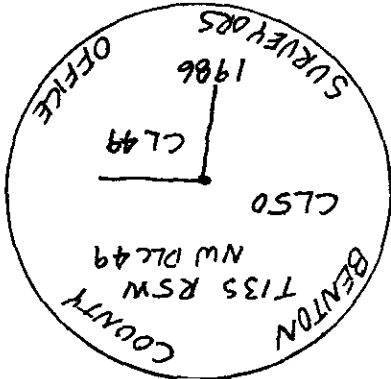
	YELLOW PLASTIC CAP STAMPED "BENTON COUNTY SURVEY" SET 18" BELOW SURFACE	YELLOW PLASTIC CAP STAMPED "BENTON COUNTY SURVEY" SET 18" BELOW SURFACE	
	SET	SET	
KIND	IRON ROD	IRON ROD	
SIZE	5/8"	5/8"	
BEARING	S44°-32'-18"E	S45°-36'-44"W	
DISTANCE	24.82'	25.24'	
BT TAG POSTED	—	—	

OVER



REGISTERED
 LAND SURVEYOR
Kanna S. Ingram
 OREGON
 JULY 18, 1982
 DANNA L. INGRAM
 1995

- LEGEND:
- SET 5/8" X 30" IRON RODS 18" BELOW SURFACE WITH YELLOW PLASTIC CAPS STAMPED "BENTON COUNTY SURVEY"
 - () RECORD INFO PER COR REST CARD # 1823
 - FOUND MONUMENT
 - D OUTSIDE DIAMETER



135849060

① FD. 3/4" BRASS DISK, 25" BELOW GROUND

SURFACE.

③ FD 4PC 18" DEEP: S44-33-52E 24.92' ^{80'}

④ FD. 4PC 18" DEEP: S45-35-42W 25.22'

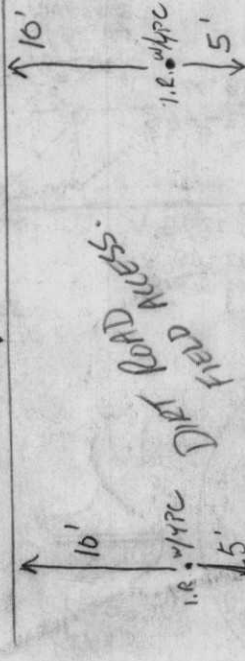
⑤ SET 5/8" ROD 1/4PC, 9" DEEP: N68-00-38E 148.01'

⑥ SET 5/8" ROD 1/4PC, 9" DEEP: N51-37-56E 186.43'

② FD 3/4" BOLT & LAKESIDE DR., 4" DEEP: S89°25'57"E 1062.47' _{49'}

A N I

▲ DLC 47



C.S. #245 cont.
#277by W.C. Galloway
WitnessesW. M. Grimsley
Monroe Childers

Oct. 20 & 21, 1919.

S.W. corner of Robert D. Grimsley Cl. 49 T.13-5.

Set $3/4 \times 24$ " bolt.

Cherry tree 4" in dia. bears N. 2° 30' W. .71 chs. std.

Balm " 32" " " N. 83° W. .36 " "

Most South S.E. cor. of John E. Porter Cl. #50 T.13-5.

Set a $1/4$ " pipe West .70 chs.

Corner cones almost in the center of the State road.

" N.W. corner of R. D. Grimsley Cl. #49. T.13-5.

Set qt. bottle 6" below surface in ditch. No trees near.

Notch in fence on line S. 89° 26' E. 2.046 chs.

S.E. cor. of Porter cl. S. 89° 26' E. 16.096 chs.

" S.E. corner of John E. Porter Cl. 50. Most E. S.E. cor. T.13-5.

Set a $5/8 \times 12$ " iron pin. Set from oak stump N. 61° 05' E. 10.37

Bearing of fence N. 0° 40' W.

Anchor post N. 1° E. .291 chs.

 $1/4$ " pipe S. 0° 40' E. .303 "

C.S. #282

W.C.G.
Witnesses

S.R. + John

Strow Nov. 11, 1919

 $1/4$ sec. cor. between sections 23 & 24 T.14 S. R. 8 W.Set 1×36 " pipe. No trees near to be left. Set $1/2$ way on line

from sec. corners.

Corner to secs. 23, 24, 25 & 26 T.14-8.

Set a plow standard 27" in length S.W. maple is stump

Maple 14" in dia. bears N. 65° E. .586 chs. std. face measurement.

" 20" " " S. 79° 50' E. 1.414 " " " " " "

Alder 16" " " S. 29° W. .110 " " " " " "

Maple 16" " " N. 71° W. .859 " " " " " "

C.S. #108

Cont.
w.c.c.

Witnesses

C.S. Brumfield

Wood

N.W. cor. of Allen Hayden Cl. # ~~38~~³⁷ T. 13-7.Set $1/4 \times 22$ " shaft orig. cor.

Fir 52" in dia. bears N. 23° E. .265 chs.

" 48" " " N. 17° W. .488 "

Dead " 72" " " S. 25° E. .23 " std.

" " 10" " " N. 74° W. .30 " stump std.

N. W. corner of R. D. Grimsley Cl 49, Twp. 13-5

1823

Reestablishment by W. C. Galloway

October 20, 1919

Set Qt. bottle 6" below surface in ditch, No trees near.

Notch in fence on line S 89° 26' E 2.046 chains

S. E. Corner of Porter Cl bears S 89° 26' E 16.096 chains

Witnesses W. M. Grimsley and Monroe Childers

6-6-81

FOSTER

M^cDowell

T 13-5 R

NW DC #49

Fd. 0.70

12" Under

12' North of Field access road
170' West of Hwy 99W E

Set 3" OD by 36" long, 2^o News
put Brass caps 3/4" dia

Stamped

Benton County Survey

Do Not Disturb

T 13R 5W

NOW DEC 49

No. 302

Write in the Rain WEATHERPROOF

J. L. DARLING CORP. ACOMA, WASH. U.S.A.

ACW DLS 41

Bsom 446 SW DLS #48

U4 90-43

SD 1062.48

HD 1062.48

886 N 89-26 E

calculated Fd. very Disturbed NO GOOD

~~FS 1/4" pipe 0.70 west of corner~~

~~H4 886 00-14 W~~

~~U4 46.8 886 89-46~~

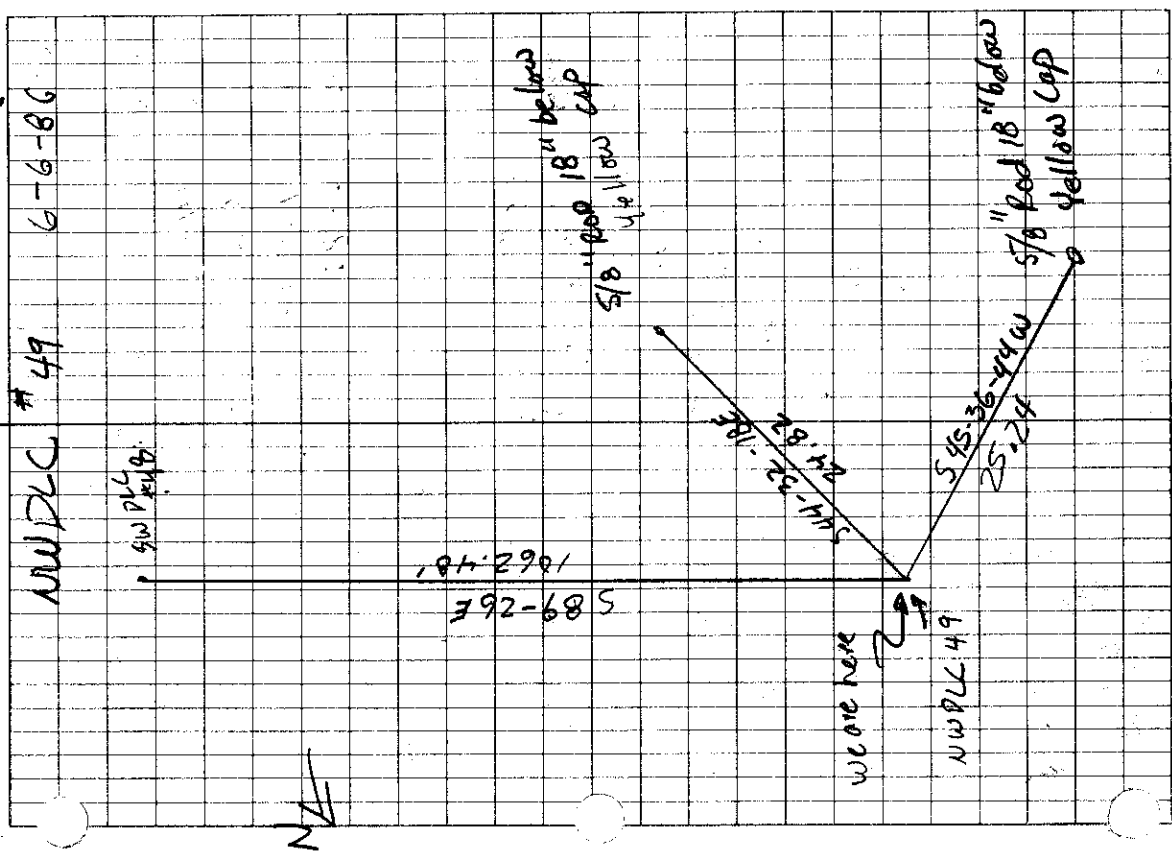
~~SD 81-57-01 1512 164~~

~~HD 1511.93 91-88-01~~

measured FS 1/4" pipe

E

2/2



No. 302

"Rite in the Rain" WEATHERPROOF

J. L. DARLING CORP. TACOMA, WASH. U.S.A.

SET 2	5/8" Rods		
FS	5/8" Yellow cap 18" below surface		
RH4	44-53-42		
SD	24.82		
V4	90-10-12		
H4	24.82		
BK6	544-32-10E		
FS	5/8" Yellow cap 18" below surface		
RH4	135-02-44		
SD	25.24		
V4	89-41-47		
H4	25.24		
BK6	545-36-44W		

135849060

BENTON COUNTY SURVEYORS OFFICE - CORNER RESTORATION

3405

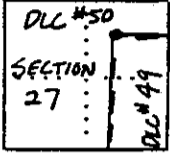
T 13 S, R 5 W, W. B. & M., BENTON COUNTY, OREGON

REPORTED BY PETE Mc DOWELL

SECTION DLC # 49 R. GRIMSLEY

TITLE ENGINEERING TECHNICIAN

DATE JUNE 6, 1986



- OFFICIAL CORNER FOUND
- CORNER SET

NW CORNER COMMON TO SEC. DLC 49 & 50
 IS 3" O.D. IRON PIPE WITH A 3/4" BRASS CAP 2' BELOW
 DESCRIBE

ADDITIONAL INFORMATION
SURFACE. FOUND A QUART BOTTLE (PER COR REST # 1823)
INVERTED WITH THE BOTTOM BROKEN AND THE NECK
FIRMLY IN PLACE 12" BELOW SURFACE. SET PIPE & CAP,
DEPOSITED GLASS NEXT TO PIPE. CORNER LIES 12' N
177' DIRT FARM FIELD ACCESS ROAD & 170' WEST OF
HWY 99W. ORIGINAL FENCE REFERRED TO IN COR.
REST CARD # 1823 DOES NOT EXIST ANYMORE. NO
SUITABLE BT'S WHERE AROUND, SET (2) 5/8" IRON RODS
AS BEARING OBJECTS.

LEGIBLE MARKS ON BEARING OBJECTS			
	YELLOW PLASTIC CAP STAMPED "BENTON COUNTY SURVEY" SET 18" BELOW SURFACE	YELLOW PLASTIC CAP STAMPED "BENTON COUNTY SURVEY" SET 18" BELOW SURFACE	
	SET	SET	
KIND	IRON ROD	IRON ROD	
SIZE	5/8"	5/8"	
BEARING	S44°-32'-18"E	S45°-36'-44"W	
DISTANCE	24.82'	25.24'	
BT TAG POSTED	—	—	

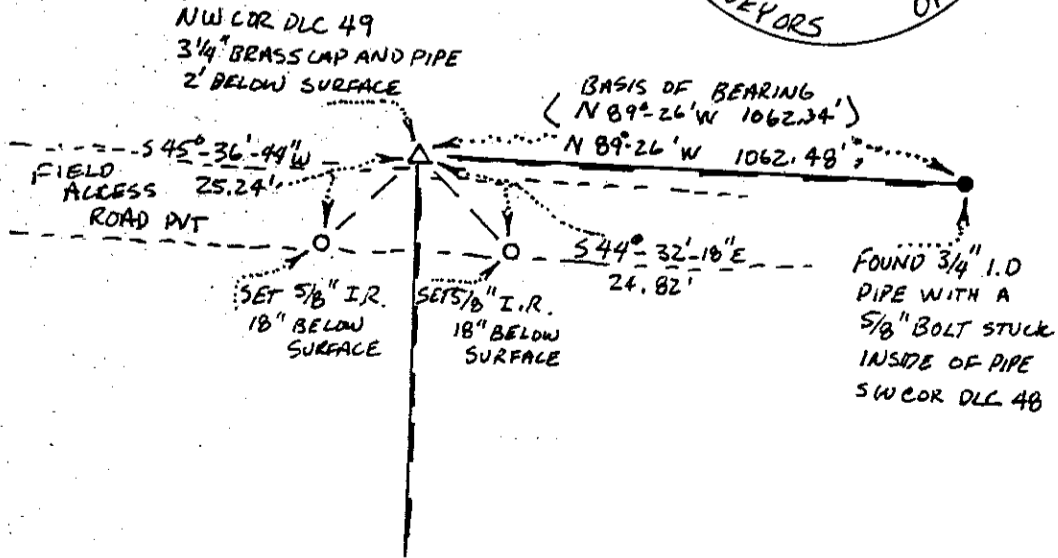
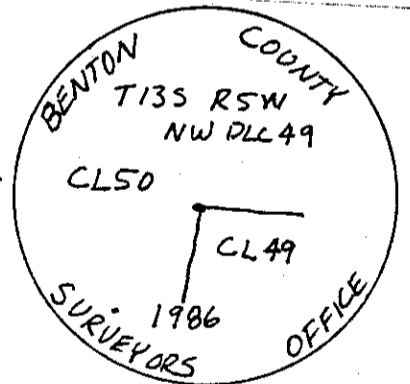
(OVER)

LEGEND:

- SET 5/8" X 30" IRON RODS 18" BELOW SURFACE WITH YELLOW PLASTIC CAPS STAMPED "BENTON COUNTY SURVEY"
- () RECORD INFO PER COR. REST CARD # 1823
- FOUND MONUMENT
- OD OUTSIDE DIAMETER



BRASS CAP DETAIL



REGISTERED PROFESSIONAL LAND SURVEYOR

Danna L. Ingram
 OREGON
 JULY 18, 1982
 DANNA L. INGRAM
 1995