

135851030

CORNER FILE TRACKING

S:\Survey Corners\CORNERS\Templates\Filetrac2.doc
10/04/2010

CORNER NUMBER
135851030

STEP	HISTORY	RESTORATION
Form Prepared, DB	3/11/2010	4/17/14
Field Inspection, DB	4/14/14	4/14/2014
Finish index (count unit)	3/11/2010	4/14/14
Counter Index	4/16/14	4/16/14
GIS Index Form	4/16/14	4/16/14
Checked, DB	4/21/14	4/21/14
Form Edited, DB	4/22/14	4/22/14
Form Signed, DB	4/22/14	4/22/14
Authorize Payment, DB	—	—
Archive Digital Files	4/22/14	4/22/14
Collect Documents	4/22/14	4/22/14
PDF File	4/22/14	4/22/14
Copy For Filming	4/22/14	4/22/14
Scanned (pdf to laserfiche)	4/22/14	4/22/14
Filmed (Archived), DB		
Filed, DB		

(DB) = Entry needed in database (Access).

COMMENTS:

DATE 03/11/2010TOWNSHIP 13 SOUTH, RANGE 5 WEST, WILLAMETTE MERIDIAN; SECTION 21 CORNER NONE
DONATION LAND CLAIM RICHARD IRWIN NO. 51 CORNER SOUTHWEST**COMMON CORNER(S):**

POINT ON THE EAST LINE OF THE JOHN LLOYD FOR HEIRS OF WILLIAM MILLER DONATION LAND CLAIM (DLC) NO. 53

RECORDS (INFORMATION IN *BOLD ITALICS* IS COUNTY STAFFS' INTERPRETATION OF THE RECORD)

BASED ON EXTENSIVE RESEARCH AND RECOVERY OF EVIDENCE, THIS OFFICE HAS DETERMINED THAT MOST GENERAL LAND OFFICE SURVEYORS IN BENTON COUNTY MEASURED TO THE FACE OF BEARING TREES.

- [01] GENERAL LAND OFFICE (GLO) NOTES OF THE RICHARD IRWIN DONATION LAND CLAIM NO. 51 BY DENNIS HATHORN, D.S., DATED JANUARY 6, 1854. *SET POST FROM WHICH A W. OAK 24" DIA BEARS N48-3/4°W, 8.58 CHAINS (566.28 FEET); A W. OAK 30" DIA BEARS N69°W, 10.16 CHAINS (670.56 FEET).*
- [02] GENERAL LAND OFFICE (GLO) NOTES OF THE WILLIAM MILLER, DECEASED, DONATION LAND CLAIM NO. 53 BY DENNIS HATHORN, D.S., DATED JANUARY 9, 1854. *CORNER TIED BUT NOT DESCRIBED.*
- [03] BENTON COUNTY SURVEY 269 (OLD NO. 119) FIELD NOTES (FIELD BOOK 10, PAGE 33) BY W. C. GALLOWAY, D.C.S., DATED OCTOBER 19, 1911. *SET STONE 7" X 8" X 12" ORIG. COR. OAK 30" DIA (GLO BT) BEARS N69°W, 10.16 CHAINS (670.56 FEET) STANDING. OAK 24" DIA (GLO BT) BEARS N48°45'W, 8.58 CHAINS (566.28 FEET) STANDING.*
- [04] BENTON COUNTY CORNER RESTORATION BOOK NO. 1, PAGE 26, BY W. C. GALLOWAY, D.C.S., DATED OCTOBER 19, 1911. *SET STONE 7" X 8" X 12" ORIG. COR. OAK 30" DIA (GLO BT) BEARS N69°W, 10.16 CHAINS (670.56 FEET) STANDING. OAK 24" DIA (GLO BT) BEARS N48°45'W, 8.58 CHAINS (566.28 FEET) STANDING.*
- [05] BENTON COUNTY CORNER RESTORATION NO. 1832. *TRANSCRIBED FROM RECORD [04] AND MAY CONTAIN ERRORS AND/OR OMISSIONS.*
- [06] BENTON COUNTY SURVEY 1117 FIELD NOTES (FIELD BOOK 70, PAGE 3) BY W. W. LARSON, D.C.S., NO DATE GIVEN. *STONE 7" X 8" X 12". OAK 30" DIA (GLO BT) BEARS N69°W, 10.16 CHAINS (670.56 FEET). OAK 24" DIA (GLO BT) BEARS N48°45'W, 8.58 CHAINS (566.28 FEET).*
- [07] BENTON COUNTY MAP NO. 13-5-00013 BY W. C. GALLOWAY, C.S., DATED MARCH 6, 1918. *STONE 7" X 8" X 12". OAK 30" DIA (GLO BT) BEARS N69°W, 10.16 CHAINS (670.56 FEET) STANDING. OAK 24" DIA (GLO BT) BEARS N48°45'W, 8.58 CHAINS (566.28 FEET) STANDING.*
- [08] BENTON COUNTY MAP NO. 13-5-00014, NO DATE OR DRAFTSMAN GIVEN. *STONE 7" X 8" X 12". OAK 30" DIA (GLO BT) BEARS N69°W, 10.16 CHAINS (670.56 FEET). OAK 24" DIA (GLO BT) BEARS N48°45'W, 8.58 CHAINS (566.28 FEET).*
- [09] BENTON COUNTY ROAD MAP OF HUGHES ROAD NO. 332 BY W. C. GALLOWAY, C.S., DATED FEBRUARY 6, 1937. *CORNER TIED BUT NOT DESCRIBED.*

FIRM/AGENCY: BENTON COUNTY SURVEYOR'S OFFICE
ADDRESS: 360 S.W. AVERY AVE. CORVALLIS OR 97333; PH. 766-6821
RESEARCH BY: DAVID L. MALONE, P.L.S.
DATA ENTRY BY: SAME

SEE CORNER HISTORY FORM FOR RECORDS ETC.

CORNER RESTORATION FIELD BOOK NUMBER 29 PAGE(S) 65 DATE 04/14/2014
TOWNSHIP 13 SOUTH, RANGE 5 WEST, WILLAMETTE MERIDIAN; SECTION 21 CORNER NONE
DONATION LAND CLAIM RICHARD IRWIN NO. 51 CORNER SOUTHWEST
CONDITION REPORT ; REFERENCED OUT ; RENEWED X; SURVEYED IN

LOCATION AND COMMENTS:

CORNER IS LOCATED ON A FLAT AREA SOUTH OF THE GRAVEL FINLEY REFUGE ROAD AND NORTH OF AN OLD OVERGROWN ROADBED. THE WILLIAM L. FINLEY NATIONAL WILDLIFE REFUGE COMPLEX SURROUNDS THIS CORNER AND MAINTAINS OPEN FIELDS TO THE NORTH AND SOUTH. TO REACH CORNER FROM THE INTERSECTION OF FINLEY ROAD AND HIGHWAY 99W, TRAVEL WEST ON FINLEY ROAD 1.32 MILES TO INTERSECTION WITH FINLEY REFUGE ROAD. TRAVEL ALONG FINLEY REFUGE ROAD SOUTH AND WEST ABOUT 0.56 MILES AND PARK. CORNER IS ON THE LEFT. CORNER IS POOR FOR PREMARKING AND GPS CONTROL.

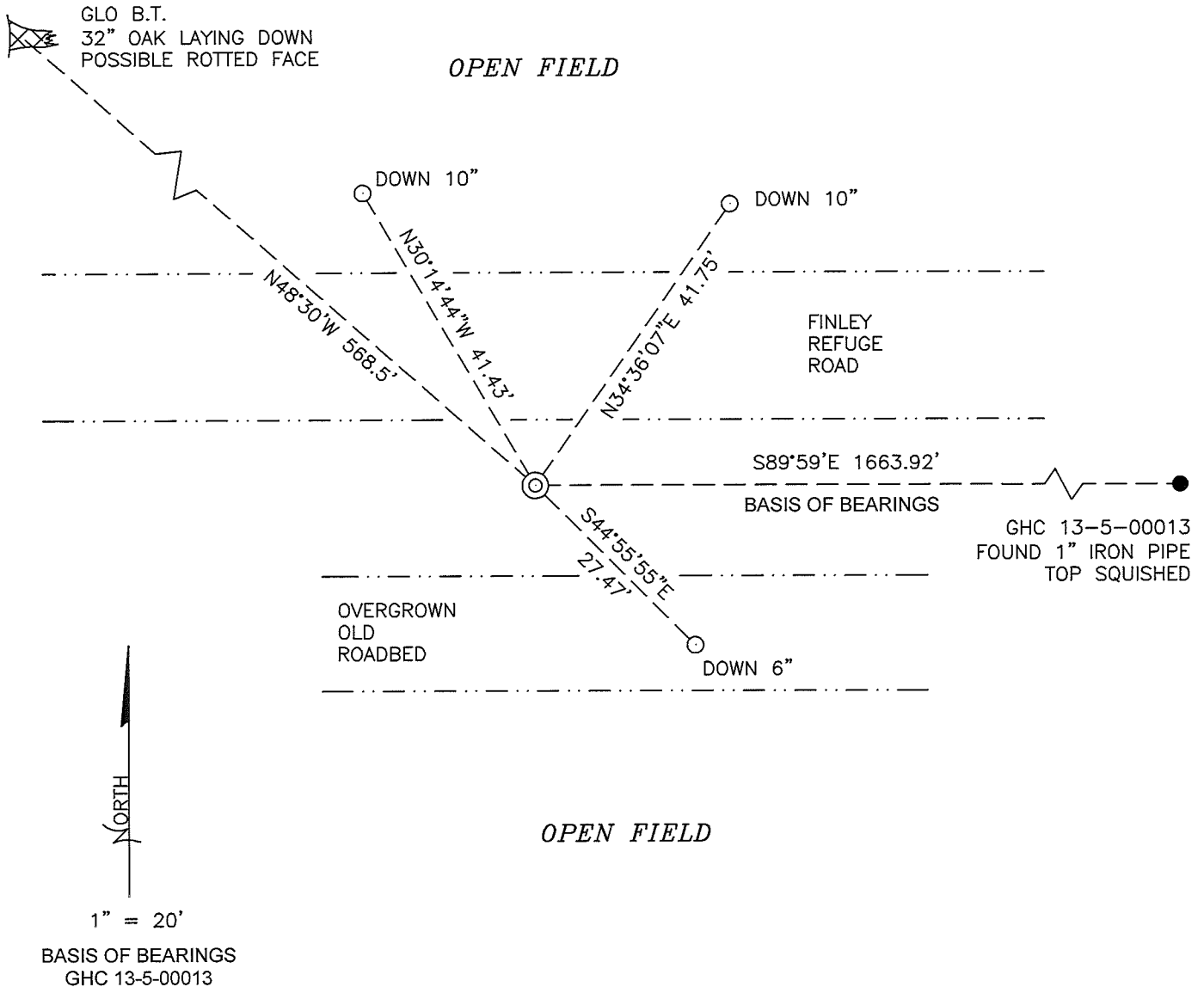
MONUMENTS AND ACCESSORIES FOUND (CONDITION AND SOURCE):

1. FOUND A 7" X 8" X 12" STONE MARKED "CS", LAYING HORIZONTAL 2" BELOW GROUND SURFACE. UNDERNEATH THE STONE WAS A HOLE THAT FIT THE BASE OF THE STONE. PLACED STONE VERTICAL IN HOLE AND SURVEYED THE HIGH POINT OF THE STONE FOR THE CORNER.
(SET POST PER RECORD [01]).
(SET STONE 7" X 8" X 12" PER RECORDS [03] AND [04]).
(STONE 7" X 8" X 12" PER RECORDS [06] – [08]).
2. FOUND 32" DIA OAK LAYING DOWN ON GROUND WITH A POSSIBLE ROTTED FACE IN THE BASE OF THE TREE. CENTER OF A DEPRESSION, WHICH MAY BE THE REMAINS OF THE ROOT HOLE, BEARS N48°30'W, 568.5 FEET.
(W. OAK 24" DIA BEARS N48-3/4°W, 8.58 CHAINS [566.28 FEET] PER RECORD [01]).
(OAK 24" DIA BEARS N48°45'W, 8.58 CHAINS [566.28 FEET] STANDING, PER RECORDS [03], [04] AND [07]).
(OAK 24" DIA BEARS N48°45'W, 8.58 CHAINS [566.28 FEET] PER RECORDS [06] AND [08]).
3. FOUND 1" IRON PIPE WITH THE TOP SQUISHED BEARS S89°59'E, 1663.92 FEET. BASIS OF BEARINGS FOR THIS RESTORATION. FOUND 3" BRASS CAP MARKED "U.S. FISH AND WILDLIFE SERVICE PENALTY 250 DOLLARS FOR DISTURBING COR 17 TR 14 HUBBARD 1964" ON THE NORTHWEST SIDE OF THE 1" IRON PIPE.
(1" PIPE BEARS S89°59'E, 25.195 CHAINS [1662.87 FEET] PER RECORDS [07] AND [08]).

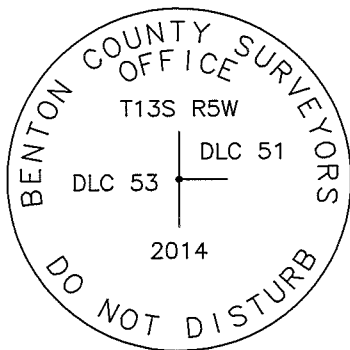
MONUMENT SET (PROCEDURES AND DESCRIPTION):

AT THE CORNER I FOUND A 7" X 8" X 12" STONE MARKED WITH "CS" LAYING HORIZONTAL 2" BELOW GROUND SURFACE. UNDERNEATH THE STONE WAS A HOLE THAT FIT THE BASE OF THE STONE. PLACED STONE VERTICAL IN HOLE AND SURVEYED THE HIGH POINT OF THE STONE FOR THE CORNER. THE STONE WAS SET BY W. C. GALLOWAY, D.C.S., IN BENTON COUNTY SURVEY NO. 269 (OLD NO. 119) IN 1911 FROM THE TWO ORIGINAL STANDING GLO BEARING TREES. I FOUND ONE GLO BEARING TREE LAYING ON THE GROUND, AND NO EVIDENCE OF THE OTHER GLO BEARING TREE. I HAVE ACCEPTED THE STONE PLACED VERTICALLY AS THE CORNER POSITION.

AT THE HORIZONTAL POSITION OF THE HIGH POINT OF THE VERTICAL STONE I SET A 2" X 31-1/2" GALVANIZED IRON PIPE WITH A 3-1/4" BRASS DISK CEMENTED IN THE TOP, 4" BELOW GROUND SURFACE AND MARKED AS SHOWN ON PAGE 2 OF 2. BURIED THE STONE HORIZONTALLY ON THE EAST SIDE OF THE BRASS DISK. SET THREE NEW IRON ROD ACCESSORIES AS SHOWN ON PAGE 2 OF 2. SET A 6 FOOT ORANGE CARSONITE "SURVEY MARKER" POST 1 FOOT NORTH OF NEW MONUMENT.



MONUMENT DETAIL



3-1/4" BRASS DISK

LEGEND

- SET 5/8" X 30" REBAR WITH YELLOW PLASTIC CAP MARKED "BENTON COUNTY SURVEYOR"
- FOUND MONUMENT AS NOTED.
- ⊙ GOVERNMENT MONUMENT SET AS SHOWN
- GHC GALLOWAY HARD COPY
- GLO GENERAL LAND OFFICE
- B.T. BEARING TREE
- ⊗ BEARING TREE LAYING DOWN AS NOTED

NEW ACCESSORIES:

1. SET REBAR (SEE LEGEND) N34°36'07"E, 41.75 FEET AND 10 INCHES BELOW GROUND LEVEL.
2. SET REBAR (SEE LEGEND) N30°14'44"W, 41.43 FEET AND 10 INCHES BELOW GROUND LEVEL.
3. SET REBAR (SEE LEGEND) S44°55'55"E, 27.47 FEET AND 6 INCHES BELOW GROUND LEVEL.

NOTES:

COMPASS DECLINATION IS 16° EAST. ALL MEASURED DISTANCES AND BEARINGS ARE TO THE CENTER OF THE OBJECT, UNLESS OTHERWISE NOTED.

THIS RESTORATION WAS PERFORMED AT THE DIRECTION AND APPROVAL OF THE BENTON COUNTY SURVEYOR *[Signature]*

FIRM/AGENCY: BENTON COUNTY SURVEYOR'S OFFICE
 ADDRESS: 360 S.W. AVERY AVE. CORVALLIS, OR. 97333; PH. 766-6821
 PRESENT: DAVID L. MALONE, P.L.S.
 EQUIPMENT: NIKON NIV03.C WITH SURVEY PRO ONBOARD.

REGISTERED
PROFESSIONAL
LAND SURVEYOR

4/22/14 *David L. Malone*

OREGON
JANUARY 12, 1999
DAVID L. MALONE
51523

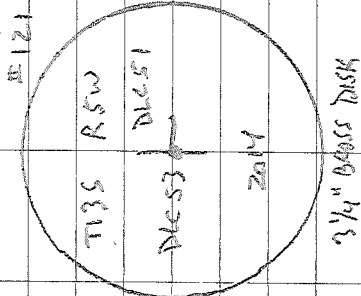
RENEWAL DATE: 12/31/14

13585 1030

REMONUMENT T135 RSW SOUTHWEST OF RICHARD IRWIN DCS1

FD 7" x 8" x 12" STONE W/ "65" MARKED ON IT, LAYING HORIZONTAL, DOWN 2", UNDERSTATH STONE WAS A HOLE THAT FIT THE BASE OF THE STONE WHEN PLACED VERTICAL. TIED THE HIGH POINT OF THE STONE. FD 32" Ø OAK LAYED DOWN AT POSITION OF GLO 24" OAK, TIED CENTER OF POSSIBLE ROOT HOLE, AT BASE OF OAK WERE REMAINS OF WHAT APPEARED TO BE A ROTTED FACE THAT HAD BEEN OPENED AT SOME POINT. STONE LIES ABOUT 8' SOUTH OF 18' WIDE GRAND ROAD (FINLEY REFUGEE ROAD) AND NORTH OF THE REMAINS OF AN OLD ROAD BED. IN PLACE OF STONE SET A 2" x 31-1/2" G.I.P. W/ 3-1/4" Ø BRASS DISK CEMENTED INTO, MARKED AS SHOWN BELOW. 4" Ø BROW GROUND SURFACE. BURIED STONE HOLE BENTONITE ON EAST SIDE OF BRASS CAP. HEDS GALVANIZED HARD COPY FOR BASIS OF BEARINGS. SET 3 IRON ROD

ACCESSORIES. SET 6' ORANGE CARBONITE "SURVEY MARKER" POST 12' NORTH OF NEW MONUMENT.

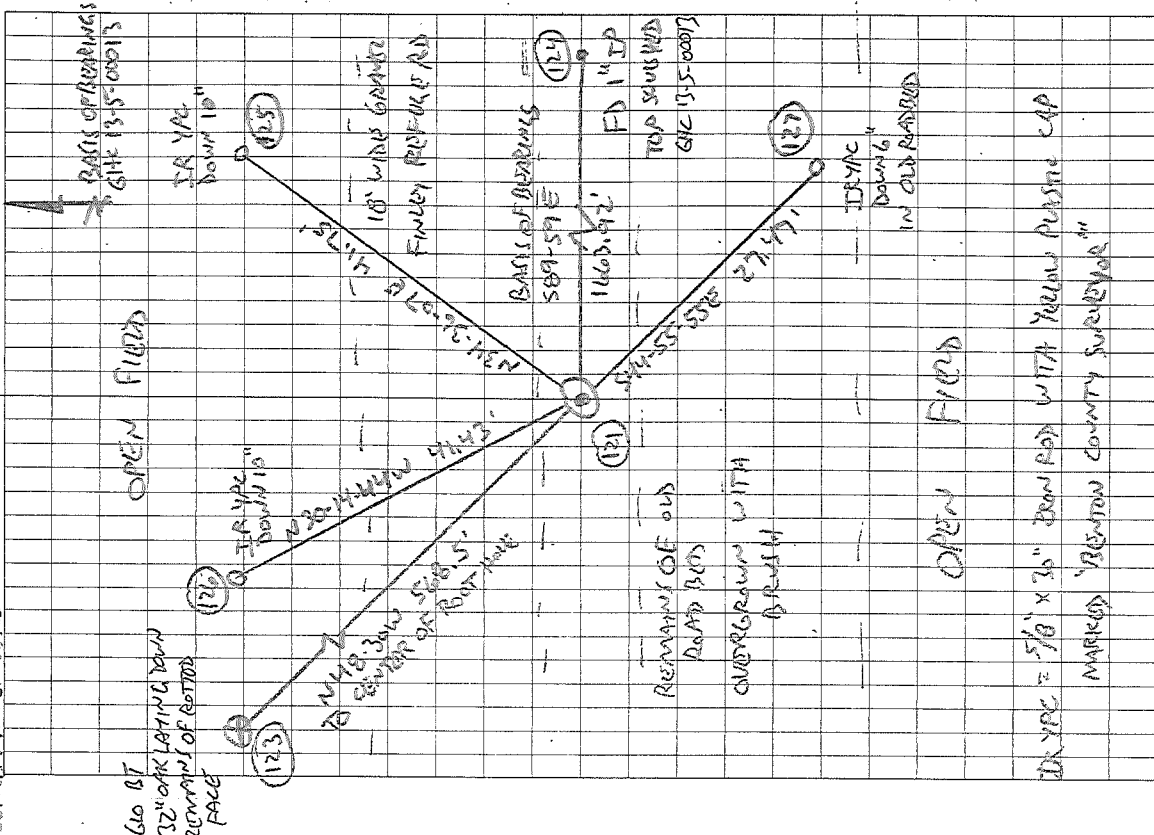


COOL, CHUR

MICROD MMS 3.C SURVEY PRO ON BOARD

4/14/2014 D. MCKONE

29/65



CORNER RESTORATION BOOK NO. 1

C.S. #117. Sec. cor. to sec. 4, 5, 8 + 9 Tp. 13-5.
 Set 1 1/2" pipe. orig. cor.
 Oak 30" in dia. bears S. 73° 30' E. 717' std.
 " 7" " " " S. 3° 15' W. 1759'
 Witnesses J. C. Buchanan + Herald Whitley Sept. 21, 1911.

Roads #293. Sec. cor. to sec. 26, 27, 34 + 35 Tp. 12-6.
 Set a stone 8" x 10" x 12" 3 stump + std.
 Oak 6" in dia. bears N. 84° 30' E. 495'
 Fir 9" " " " S. 60° E. 1183'
 Oak 4" " " " S. 37° 20' W. 1358'
 " 5" " " " N. 12° 20' W. 472'
 Witnesses Ch. Johnson, Al. Ervin, J. B. Ellis + Henry Gerhard Sept. 26, 1911.

C.S. #118 N.E. cor. of Hiram Allen's D.L.C. # 55 Tp. 12-5.
 Set a 1" pipe
 Oak 12" in dia. bears N. 37° 00' E. 4745' std.
 " 14" " " " S. 18° 35' W. 4660'
 Witnesses R. O. Cavel + P. F. Thomas Oct. 5, 1911.

" S.E. cor. of Hiram Allen's D.L.C. # 55 Tp. 12-5.
 Set 1 1/2" pipe
 Oak 12" in dia. bears S. 15° E. 320' std.
 Crabapple 6" " " N. 87° 30' W. 584'
 Witnesses R. O. Cavel + P. F. Thomas Oct. 6, 1911.

" S.W. cor. of Geo. Bethel's D.L.C. # 49 Tp. 12-5.
 Set 1" pipe galvanized orig. cor.
 Ash 18" in dia. bears N. 23° E. 546' std.
 Oak 20" " " " S. 89° 30' E. 539'
 Witnesses P. F. Thomas Lloyd Shram Oct. 7, 1911.

C.S. #119. S.W. cor. of Richard Irvine's D.L.C. # 51 Tp. 13-5.
 Set a stone 7" x 8" x 12" orig. cor.
 Oak 30" in dia. bears N. 69° W. 1216' std.
 " 24" " " " N. 48° 15' W. 858'
 Witnesses R. O. Cavel + P. F. Thomas Oct. 19, 1911.

" Sec. cor. to sec. 14, 15, 22 + 23 Tp. 13-5.
 Set 1" galvanized pipe 12" under surface, cor. at four ^{stone} stones
 Oak 10" in dia. bears N. 85° 27' E. 11134'
 " 14" " " " S. 62° 40' E. 7799'
 Witnesses R. O. Cavel + P. F. Thomas Oct. 24, 1911.

" 1/4 cor. between sec. 14 + 23 Tp. 13-5.
 Set a 1 1/2" pipe
 Oak 19" in dia. bears S. 2° 50' E. 2896'
 " 10" " " " S. 55° W. 305' std.
 " 5" " " " S. 77° 43' W. 2848'
 Witnesses R. O. Cavel + P. F. Thomas Oct. 24 1911.

1832

Southwest corner of Richard Irwin's DLC 51, Twp. 13-5

Reestablishment by W. C. Galloway

October 19, 1911

Set a stone 7" x 8" x 12" original corner

Oak 30" in diam bears N. 69° W

10.16 chains (standing)

Oak 24" in diam bears N. 48° 45' W

8.58 chains (standing)

Witnesses R. O. Caves and P. F. Thomas