

CORNER FILE TRACKING

H:\Survey\Corners\Misc\Filetrac2.doc

06/15/2003

CORNER NUMBER
135861060

STEP	HISTORY()	RESTORATION()
Form Prepared, DB	4/24/08	7/30/08
Field Inspection, DB	7/24/08	7/24/08
Form Checked, DB	8/1/08	8/1/08
Form Edited, DB	8/1/08	8/1/08
Form Signed, DB	8/1/08	8/1/08
Counter Index	7/25/08	7/25/08
GIS Index	7/30/08	7/30/08
Authorize Payment, DB	_____	_____
Archive Digital Files	8/12/08	8/12/08
Collect Documents	8/12/08	8/12/08
Scanned	8/13/08	8/13/08
Copy For Filming	8/12/08	8/12/08
Filed, DB		
Finish index (count unit)	8/24/08	8/24/08
Filmed (Archived), DB		
Document No's to Andrew		

(DB) = Entry needed in database (Access).

COMMENTS:

135861060

DATE 04/24/2008TOWNSHIP 13 SOUTH, RANGE 05 WEST, WILLAMETTE MERIDIAN; SECTION 01 CORNER N/A
DONATION LAND CLAIM DUDLEY DORR NO. 61 CORNER NORTH-NORTHWEST**COMMON CORNER(S):**

NONE

RECORDS (INFORMATION IN BOLD ITALICS IS COUNTY STAFFS' INTERPRETATION OF THE RECORD)

BASED ON EXTENSIVE RESEARCH AND RECOVERY OF EVIDENCE, THIS OFFICE HAS DETERMINED THAT MOST GENERAL LAND OFFICE SURVEYORS MEASURED TO THE FACE OF BEARING TREES.

- [01] GENERAL LAND OFFICE (GLO) NOTES OF THE DUDLEY DORR DONATION LAND CLAIM (DLC) NO. 61 BY L. A. DAVIS, D.S., DATED 1858. **SET A POST. MARKED A 16" W. OAK S69°15'E 95 LKS. (62.70 FT.) AND A 25" PINE 26°15'W 131 LKS. (85.80 FT.).**
- [02] ROAD SURVEY OF COUNTY ROAD NO. 35260 (OLD NO. 296) FIELD NOTES (ROAD PLAT BOOK 2, PAGE 235) BY J. A. GANONG, D.C.S., DATED FEBRUARY 27, 1912. **CORNER TIED, BUT NOT DESCRIBED.**
- [03] COUNTY SURVEY NO. 605 (OLD NO. 261) FIELD NOTES (BOOK 23, PAGE 18) BY W. C. GALLOWAY, C.S., DATED SEPTEMBER 24, 1917. **SET A 1" X 30" GALV. PIPE. FOUND A 16" OAK (GLO BT) N69°15'E 0.95 CHS. (62.70 FT.), STANDING AND A 25" PINE (GLO BT) S27°30'E 1.31 CHS. (85.80 FT.), STANDING.**
- [04] COUNTY SURVEY NO. 605 (OLD NO. 261) MAP BY W. C. GALLOWAY, C.S., DATED OCTOBER 10, 1917. **1" PIPE.**
- [05] CORNER RESTORATION BOOK 1, PAGE 126 BY W. C. GALLOWAY, C.S., DATED SEPTEMBER 24, 1917. **SET A 1" X 30" GALV. PIPE. FOUND A 16" OAK (GLO BT) N69°15'E 0.95 CHS. (62.70 FT.), STANDING AND A 25" PINE (GLO BT) S27°30'E 1.31 CHS. (85.80 FT.), STANDING.**
- [06] CORNER RESTORATION NO. 1721. **TRANSCRIBED FROM RECORD [05] AND MAY CONTAIN ERRORS AND/OR OMISSIONS.**
- [07] BENTON COUNTY MAP NO. 13-4&5-00001 BY W. C. GALLOWAY, C.S., DATED OCTOBER 10, 1917. **1" G. PIPE. 16" OAK (GLO BT) N69°15'E 0.95 CHS. (62.70 FT.), STANDING. 25" PINE (GLO BT) S27°30'W 1.31 (85.80 FT.), STANDING.**
- [08] COUNTY SURVEY NO. 7466 BY KENNETH WIGHTMAN, P.L.S., DATED OCTOBER 22, 1982. **FOUND A 1" PIPE. ORIGINAL BT'S NOW GONE. MARKED A 10" P. PINE S74°W 17.5 FT., MARKED WITH AN "X" AND A 45" OAK N13°W 8.10 FT., MARKED WITH AN "X".**
- [09] CORNER RESTORATION NO. 3085. **TRANSCRIBED FROM RECORD [08] AND MAY CONTAIN ERRORS AND/OR OMISSIONS.**
- [10] COUNTY SURVEY NO. 7477 BY KENNETH WIGHTMAN, P.L.S. AND EDGAR COOK, P.L.S., DATED DECEMBER 3, 1982. **FOUND A 1" IRON PIPE.**

NOTES:

THIS IS A MICROSOFT WORD 2003 DOCUMENT NAMED "35861060" CREATED FROM A BOILER PLATE DOCUMENT NAMED "HISTORY", WHICH HAS A STYLESHEET NAMED "CORNER" ATTACHED TO IT.

FIRM/AGENCY: BENTON COUNTY SURVEYOR'S OFFICE
ADDRESS: 360 S.W. AVERY AVE. CORVALLIS OR 97333; PH. 766-6821
RESEARCH BY: BERNARD S. ALTENBACH, ENGINEER/SURVEY TECH.
DATA ENTRY BY: SAME

BENTON COUNTY CORNER RESTORATION FORM, PAGE 1 OF 2, 135861060R2

SEE CORNER HISTORY FORM FOR RECORDS ETC.

CORNER RESTORATION FIELD BOOK NUMBER 27 PAGE(S) 07

DATE 07/28/2008

TOWNSHIP 13 SOUTH, RANGE 05 WEST, WILLAMETTE MERIDIAN; SECTION 01 CORNER N/A

DONATION LAND CLAIM DUDLEY DORR NO. 61

CORNER NORTH-NORTHWEST

CONDITION REPORT _____;

REFERENCED OUT _____;

RENEWED XX _____;

SURVEYED IN _____

LOCATION AND COMMENTS:

CORNER IS LOCATED ON LEVEL GROUND 47 FEET EAST OF LOREN LANE (PRIVATE ROAD). TO REACH THE CORNER FROM THE JUNCTION OF SMITH LOOP AND LOREN LANE, TRAVEL NORTH ON LOREN LANE FOR 0.10 MILES AND PARK ON THE EAST SIDE OF THE ROAD. CORNER IS POOR FOR PREMARKING AND GPS CONTROL.

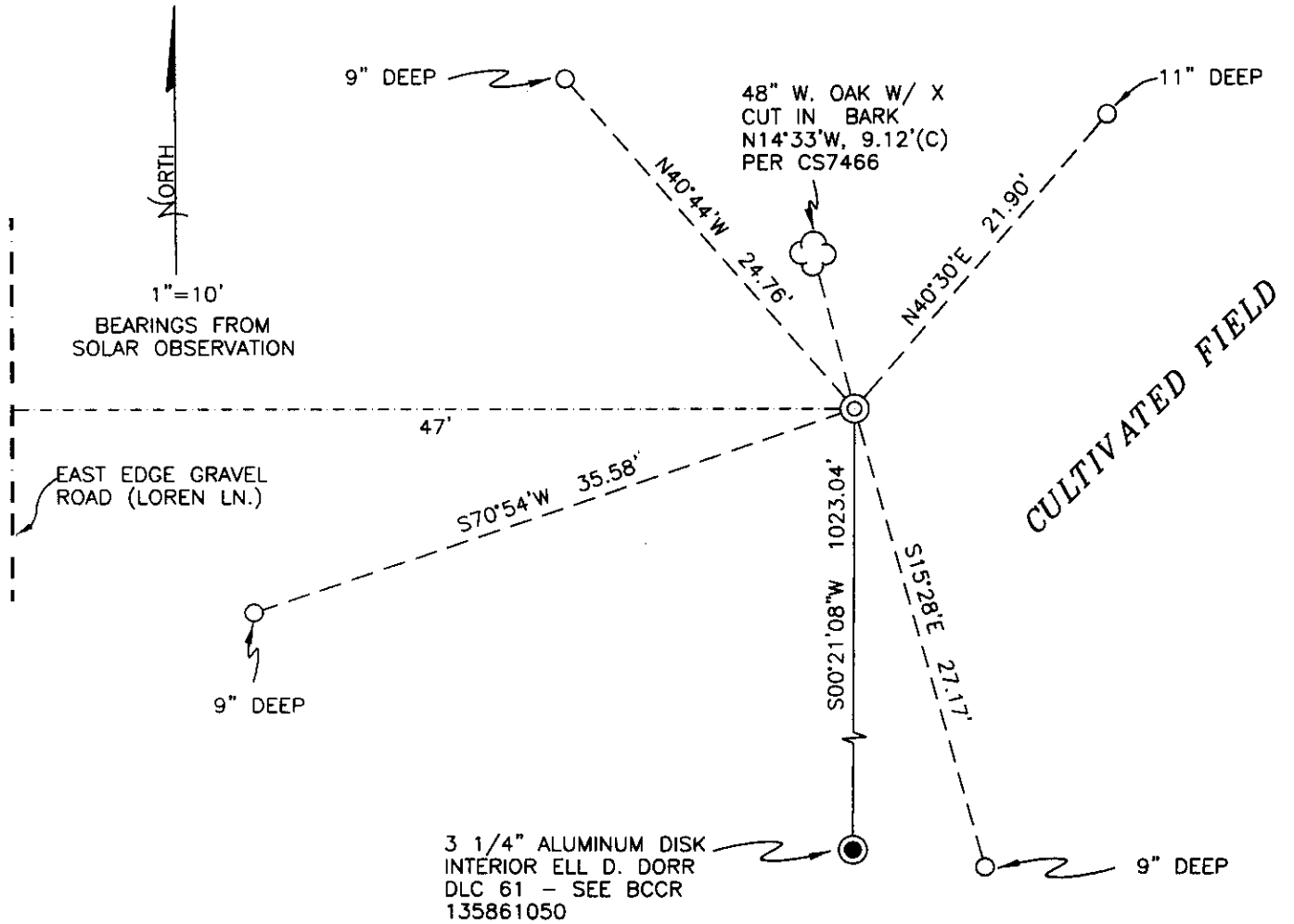
MONUMENTS AND ACCESSORIES FOUND (CONDITION AND SOURCE):

1. FOUND A 1" X 29" GALVANIZED IRON PIPE, 5" BELOW GROUND LEVEL, FIRMLY SET FOR THE CORNER POSITION.
(SET A POST PER RECORD [01]).
(SET A 1" X 30" GALVANIZED PIPE PER RECORDS [03] AND [05]).
(FOUND A 1" PIPE PER RECORDS [08] AND [10]).
2. FOUND A 3 1/4" ALUMINUM DISK (INTERIOR ELL OF DLC 61) S00°21'08"W, 1023.04 FEET. SEE BENTON COUNTY CORNER RESTORATION NO. 135861050.
(SOUTH, 1023.00 FEET PER RECORD [01]).
(S00°14'E, 1023.00 FEET PER RECORDS [04] AND [07]).
(S00°13'16"E, 1023.00 FEET PER RECORD [08]).
3. FOUND A 48" W. OAK, N14°33'W, 9.12 FEET TO CENTER, WITH A VISIBLE "X" CHOPPED IN THE BARK.
(45" OAK MARKED "X", S13°W, 8.1 FEET PER RECORD [08]).

MONUMENT SET (PROCEDURES AND DESCRIPTION):

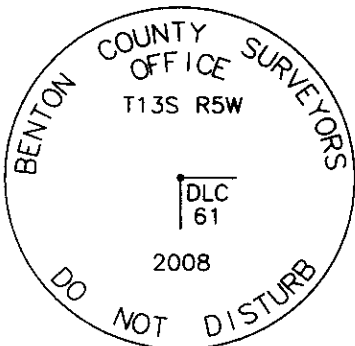
THE RECOVERED 1" X 29" GALVANIZED IRON PIPE COMPARES WELL IN DISTANCE WITH THE DONATION LAND CLAIM CORNER TO THE SOUTH AND WITH THE ONE RECOVERED BEARING TREE PER RECORD [08]. WE HELD THE 1" GALVANIZED IRON PIPE FOR THE TRUE CORNER POSITION.

REMOVED THE 1" GALVANIZED IRON PIPE AND SET A 2" X 31 1/2" GALVANIZED IRON PIPE WITH A 3 1/4" ALUMINUM DISK CONCRETED IN THE TOP, FLUSH WITH THE GROUND AND MARKED AS SHOWN ON PAGE 2 OF 2. SET A 6 FOOT ORANGE CARSONITE "SURVEY MARKER" POST 0.5 FEET EAST OF THE NEW MONUMENT. REMOVED THE 1" X 29" GALVANIZED IRON PIPE FROM THE AREA.



MONUMENT DETAIL

LEGEND



- SET 5/8" X 30" REBAR WITH YELLOW PLASTIC CAP MKD "BENTON COUNTY SURVEYOR"
- (C) MEASUREMENT TO CENTER
- ⊙ GOVERNMENT MONUMENT SET AS SHOWN
- GOVERNMENT MONUMENT FOUND AS SHOWN
- ☁ BEARING TREE AS NOTED

3 1/4" ALUMINUM DISK

NEW ACCESSORIES:

1. SET REBAR (SEE LEGEND) 9" BELOW GROUND LEVEL, N40°44'W, 24.76 FEET.
2. SET REBAR (SEE LEGEND) 9" BELOW GROUND LEVEL, S70°54'W, 35.58 FEET.
3. SET REBAR (SEE LEGEND) 9" BELOW GROUND LEVEL, S15°28'E, 27.17 FEET.
4. SET REBAR (SEE LEGEND) 11" BELOW GROUND LEVEL, N40°30'E, 21.90 FEET.

NOTES:

COMPASS DECLINATION IS 20° EAST. ALL MEASURED DISTANCES AND BEARINGS ARE TO THE CENTER OF THE OBJECT, UNLESS OTHERWISE NOTED. ALL BEARING TREES ARE PAINTED AND HAVE A B.T. TAG ATTACHED, FACING THE CORNER UNLESS OTHERWISE NOTED. ALL NEW BEARING TREES HAVE A PLASTIC WASHER (STAMPED "SURVEYOR MARKER DO NOT REMOVE") ATTACHED BY AN ALUMINUM NAIL TO THE FACE, BELOW THE "BT" FOR DISTANCE AND ANGLE MEASUREMENT UNLESS OTHERWISE NOTED. THE DRAWING IS FROM AUTOCAD RELEASE 2008.

THIS RESTORATION WAS PERFORMED AT THE DIRECTION AND APPROVAL OF THE BENTON COUNTY SURVEYOR Dw

REGISTERED
PROFESSIONAL
LAND SURVEYOR

FIRM/AGENCY: BENTON COUNTY SURVEYOR'S OFFICE
 ADDRESS: 360 S.W. AVERY AVE. CORVALLIS, OR. 97333; PH. 766-6821
 PRESENT: DAVID M. DEAN, P.L.S. AND BERNIE ALTENBACH, SURVEY TECH.
 EQUIPMENT: LIECA TCR 1105 WITH TDS ON BOARD

8/1/08 David M. Dean

OREGON
JULY 13, 1984
DAVID M. DEAN
2090

RENEWAL DATE: 12/31/09

135861060

REINFORCEMENT N-NW DICK

DUBLEY DOOR DIC No. 61

FD 1" X 29" GALV I.P., 5" ABOVE GROUND LEVEL,
 FIRMLY SET FOR THE CORNER POSITION. REMOVE
 I.P. FROM AREA. SET 2" X 3 1/2" GALV. I.P., FLUSH
 WITH THE ~~GROUND~~ GROUND LEVEL, WITH A 3/4" ALUM. DISK
 CONCRETED ON TOP AND MARKED AS SHOWN.
 FD THE NW BT PER CS 7466, A 48" W. OAK
 W/A "X" CUT IN THE BARK.
 SET A 6' ORANGE CARBONITE "SURVEY MARK"
 POST, 0.5 FEET EAST OF THE NEW MONUMENT.
 CORNER IS POOR FOR REMARKING AND G.F.S.

3/4" ALUM DISK

T135 R5W

DLC
61

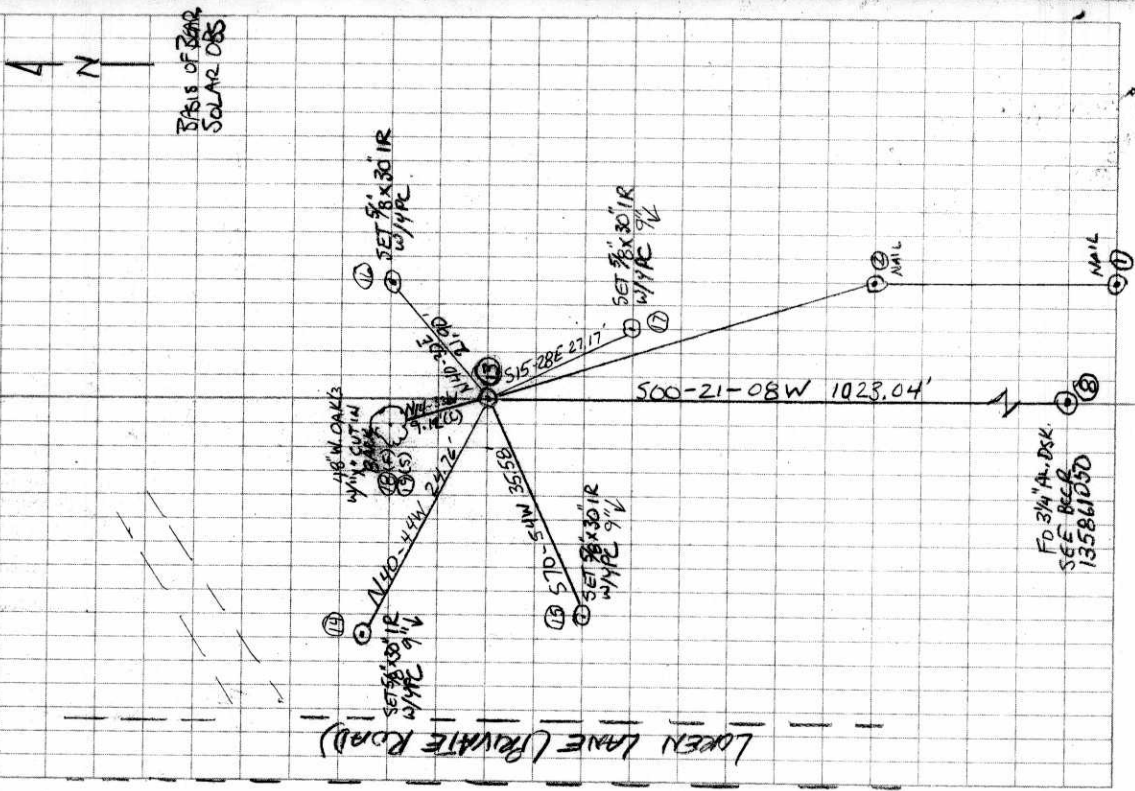
2008

CLEAR/WARM
73°F. 30.2" Hg.

LEICATER 1105/TDS

7-24-08
B. AITENSACH
KOTT
D. DEAN

27/7



C.S. 260
W.C. Galloway

S.W. corner of Jas. L. Mulkey Sr. D.L.C. #63 T. 11-5

C.S. 2

Set $\frac{3}{4}$ " pipe (galv) set from fence 1 on City monument line.

Post cor. of fence bears N. 45° W. 3.84 chs.

" " " " N. 45° E. 3.16 "

Witness G. B. Coon Aug. 21, 1911.

Road

Corner to secs. 6, 7, 1 & 12 T. 15 S. R. 8 & 9 W

Set a binder iron & cedar stake near. Found stake hole.

Maple 40" in dia. bears North 1.313, chs. which was line tree.

" 24" " " " S. 4° 30' E. 2.478 "

Ash 10" " " " S. 56° W. 1.50 " old trunk.

" 8" " " " S. 74° 20' E. 1.45 " stump

Witness S. J. Galloway Aug. 21, 1917.

C.S. 254

Most south S.W. corner of Joseph M. Lofferty D.L.C. #46, T. 14-5

Set a wagon thimble. Set from Ash stump that Robert Herron said was
a witness tree.

An iron on line S. 89° 29' E. 20 lks.

" " " " S. 0° 06' W. 20 lks.

Witnesses Albert, Wm., & Martin Goracke & Robert Herron Sept. 13, 1917.

S.E. corner of J. M. Lofferty D.L.C. 46, T. 14-5.

Set a wagon thimble. E. bnk ditch. N.E. ash down dead. Ash 15" S. 35° 24' W. 4 lks. ^{no letters}

Ash 8" in dia. bears S. 20° W. 1.65 chs.

" 12" " " " S. 80° W. .403 "

Witnesses Albert, Wm. & Martin Goracke Sept. 14, 1917.

C.S. # 261
by W.C. Galloway

Most N. N.W. cor. of Dudley Dorr D.L.C. 76 & 61 T. 13 S. R. 4 & 5 W.

Set a 1" x 30" galv. pipe

Oak 16" in dia. bears N. 69° 15' E. .95 chs. std.

Pine 25" " " " S. 27° 30' W. 1.31 " "

Witnesses Edd. Walter & Judd Smith. Sept. 24, 1917.

N.E. cor. of Dudley Dorr D.L.C. #76 T. 13-4

A 1 $\frac{1}{4}$ " pipe set

Oak 14" in dia. bears S. 27° 30' W. 2.35 chs. not sure if it being there.

" 25" " " " N. 65° W. 1.39 " std.

S.E. cor. of Dudley Dorr D.L.C. #76 T. 13-4

Set 1" galv. pipe set from fir stump & oak ^{one more oak changed 10' 50' W.}

Fir 24" in dia. bears N. 12° 30' E. 7.65 "

" 20" " " " N. 44° 30' W. 1.644 "

Witnesses as above. Sept. 24, 1917.

S.W. corner of Dudley Dorr D.L.C. 76 & 61 T. 13 S. R. 4 & 5 W.

Set a 1" galv. pipe. Set from stump. There are a number of stumps. One match.

Red fir 21" in dia. bears N. 21° E. 4.70 chs.

W. " 12" " " " S. 83° 30' E. 4.12 "

Witnesses as above & John Norton

Sept. 24, 1917.

13-4-76

13-5-61

Most N. N. W. corner of Dudley Dorr DLC 76 and 61, Twp. 13 S. Rs 4 and 5 W

Reestablishment by W. C. Galloway

September 24, 1917

Set a 1" x 30" galvanized pipe

Oak 16" in diam bears N 69°15' E

Pine 25" in diam bears S 27° 30' W

Witnesses Edd Walter and Judd Smith

172!

.95 chains(standing)
1.31 chains(standing)

BENTON COUNTY SURVEYORS OFFICE - CORNER RESTORATION

03085

T. 13 S. R. 5 W. W. B. & M., BENTON COUNTY, OREGON

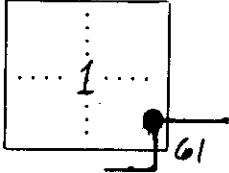
DLC 61
SECTION

REPORTED BY KEN WIGHTMAN

TITLE L.S. 942

DATE 11-10-82

The information shown hereon was taken from
the referenced county survey. Date: ^{CJL} 7/31/90



● OFFICIAL CORNER FOUND

○ CORNER SET

NNW CORNER COMMON TO SEC. DLC 61 & _____
IS 1" I.D. PIPE AS PER C.S. 261 (GALLOWAY)

DESCRIBE

ADDITIONAL INFORMATION

SEE C.S. 7466

ORIGINAL B.T.S. NOW GONE

LEGIBLE MARKS ON BEARING OBJECTS

	X	X		
KIND	<u>OAK</u>	<u>P. PINE</u>		
SIZE	<u>45"</u>	<u>10"</u>		
BEARING	<u>N. 13° W</u>	<u>S. 74° W</u>		
DISTANCE	<u>8.1'</u>	<u>17.5'</u>		
BT TAG POSTED				

OVER