

CORNER FILE TRACKING

H:\Survey\Corners\Misc\Filetrac.doc

11/23/98

CORNER NUMBER
136100640

STEP	HISTORY()	RESTORATION()
Form Prepared, DB	11/24/98	—
Field Inspection, DB	—	—
Form Checked, DB	12/17/98	—
Form Edited, DB	1/6/99	—
Form Signed, DB	—	—
Authorize Payment, DB	—	—
Archive Digital Files	1/23/99	—
Collect Documents	4	—
Scanned		
Indexed (count unit)		
Copy For Filming		
Filmed (Archived), DB		
Filed, DB		
Update Database		

(DB) = Entry needed in database (Access).

COMMENTS:

11/24/98 - THIS NEEDS A NEW HISTORY (136100640H)

CORNER HISTORY		T 13 S, R 6 W		SECTION 6 D.L.C.		CORNER W 1/4 CORNER		# 100640
NO.	DATE	SOURCE	SURVEYOR	MONUMENTS AND ACCESSORIES		COMMENTS		TOTAL NO. OF OBJECTS
1	2/28/1855	CRUS. GLO	HARVEY GORDON + JOSIAH PRESTON	SET POST @ 2 MAPLE BT'S, MEAS. TO FACE				13
2	6/4/1892	GLO	ROBERT D. COLLIER	DID NOT FIND				2
3	3/14/1923	MAP NO. 13-647-00004	BENTON (COUNTY)	SHOWS GLO INFO				3
4	1959	STARKER FOR- ESTS MAP	STARKER FORESTS	MAY HAVE FOUND				4
5	10/9/1972	" "	" "	1 1/4" I.P. @ 2 FIR BT'S (SAME BT'S AS REC. LOG)				5
6	10/14/1972	CS# 5339	KEN WIGHTMAN	SET 3/4" PIPE + 2 NEW BT'S FROM CAR. CALL				6
7	-	REST. 1064	-	TRANS FROM REC. LOG + CONTAINS ENO				7
8	4/72-4/73	CS# 5496 MAP	WILLIAM EIMSTAD	CREATES PROPORTIONED POSITION, DID NOT MONUMENT				8
9	5/1/1973	CS# 5496 LETTER	" "	REJECTS REC. LOG MONUMENT				9
10	9/21/1973	STARKER FOR- ESTS MAP	STARKER FORESTS	ENO. 3/4" PIPE + 2 BT'S				10
11	8/29/1984	" "	JOHN WHITTLE	SET WHITE FIBERGLASS POST FOR APPROX. COR.				11
12	3/7/1990	REST- 3744	JIM PETERSON	FINDS REJECTS REC. LOG MON., SETS BC @ 4 ALLES. BY SINGLE PROP. MEAS.				12
13	3/13/1990	CS# 8392	" "	DID NOT FIND ORIG. COR. OR ALLES. FINDS + REJECTS REC. LOG MON., SET BC BY SINGLE PROP. MEAS.				13
14	11/10/1997	CS# 9076	" "	ENO. BC AS PER REC. [12]				14
								15
								16
								17
								18
								19
								20
								21
								22
								23
								24
								25
								26
								27
								28
								29
								30
								31

107
108
109
110
111
112
113
114

KNOWN GLO CORNERS MAP - STARKER FORESTS

T. 13 S. R. 6 W. Sec.

Subdiv.

Mapped by

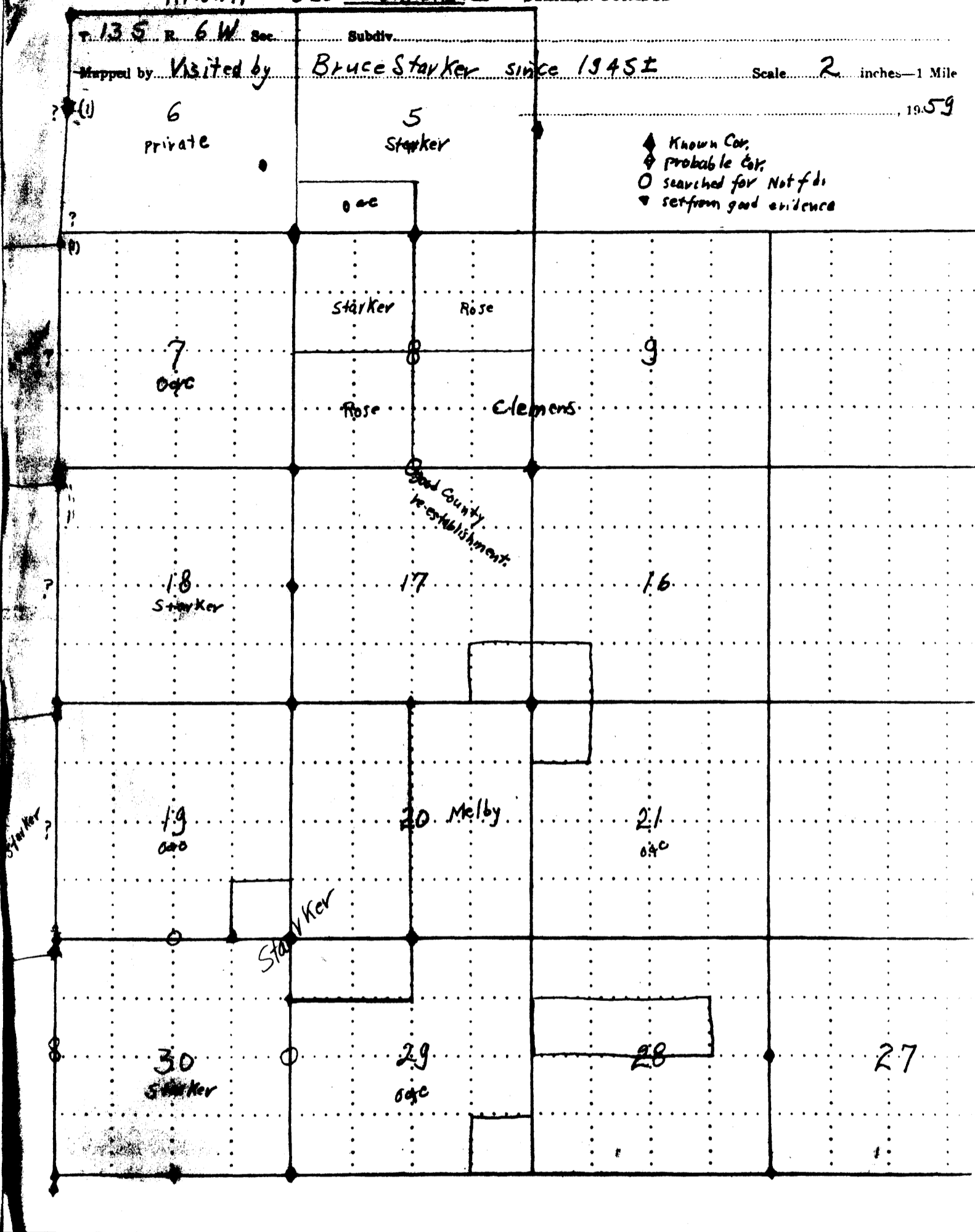
Visited by

Bruce Starker since 1945±

Scale 2 inches = 1 Mile

1959

- ◆ Known Cor.
- ◇ Probable Cor.
- searched for Not f'd
- ▽ set from good evidence



T125
T135

13S/7W

36

759-1083

36 31

(5)

2615°

SET 1" PIPE ON S. EDGE
OF OLD SKID ROAD
NO EVIDENCE OF ORIG. BT'S
MAD NEW BT'S:

10" D-FIR N13°W 24° H.
4" D-FIR S58°E 312° H.

17" dia DBH 5.4" (circumf) D-f tail hold girdled completely
Stump 6'23"
8.4' top (scaling dia)

22' DBH 70 1/2"
Stump 80"
100' line blaze 66% girdled

29" DBH 91 1/2" 100%
20 DBH 61 90% 100ft S of line
D-f damaged
1 alder at D-f gone!

10" dia
32 1/4" circumf
fir
N12W 163°
W4 Sec 6
10/9/72 by RC

BASIS OF BEARING C.S. 5496
(N 0° 12' 58" W)
3147.2

14" dia
43 3/4" circumf.
fir
S82E 23°
W4 Sec 6
10/9/72 by RC

1 1/4" J.P.

W4 6

(6682)

FD 3/4" PIPE ON
NORTH SIDE OF
RIDGE (C.S. 5496)

ON N. SLOPE APPROX.
RIDGE TOP
SNAG N81°E 46 H. MAD.
BT'S:
1 N19°W 31 H
2 S82°E 22 H
TE 4" 14" POST ON S.
PIPE
75

SET 1" PIPE APPROX 80' NORTH
OF CAFFER & 100' S. OF ROAD
MAD NEW BT'S:
8" GRAND FIR N66°E 44 H
32" GRAND FIR S, 31°W 50 H



1310 85

N 0° 23' 10" W
5708.2

130.45

364

641

89° 58' 05" E 5221.4

SET 1" PIPE ON S. SLOPE
APPROX. 75' S OF DIRT ROAD
AND 75' N. OF ANOTHER DIRT ROAD
MAD NEW BT'S:

8" D-FIR S 79° W 52 FT. - clear 12/7/90
10" D-FIR S 4° E 72 FT. - std green

(5 00' 17" 30" E
1289.1)

(130472)

(S 89° 59' 30" E)
(130512)

PIPE ON RIDGE
EAST & APPROX.
ROAD
BT'S:
S58°E 23°
SOUTH 32 H
4" 14" POST ON
OF PIPE

SET 1" PIPE ON E. SLOPE
IN STAND OF 3" 10 8" HEMLOCKS
NO EVIDENCE OF ORIGINAL BT'S
MAD NEW BT'S
6" D-FIR N13°W 21 H.

N 0° 11' 50" W
2576.9

BENTON COUNTY SURVEYORS OFFICE - CORNER RESTORATION

1864

T. 13 S, R. 6 W, W. B. & M., BENTON COUNTY, OREGON

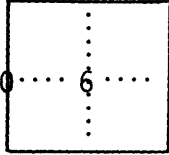
REPORTED BY Kenneth M. Wightman

SECTION 6 and 13-7-1

TITLE P.L.S.

DATE 10-14-72

The information shown hereon was taken from
the referenced county survey. Date: 7/26/90



● OFFICIAL CORNER FOUND

○ CORNER SET

1/4 CORNER COMMON TO SEC. 6
is 3/4" galvanized iron pipe
DESCRIBE

ADDITIONAL INFORMATION

FOUND ORIGINAL BEARING TREES + HOLE (NO STONE)
Set 3/4" galvanized iron pipe on steep North slope at
called 2.5 chains from branch and new bearing
trees marked.

C.S. 5339

OVER

LEGIBLE MARKS ON BEARING OBJECTS

KIND	<u>Fir</u>	<u>Fir</u>	
SIZE	<u>12"</u>	<u>10"</u>	
BEARING	<u>S82°E</u>	<u>N12°W</u>	
DISTANCE	<u>23.3</u>	<u>16.3</u>	
BT TAG POSTED			

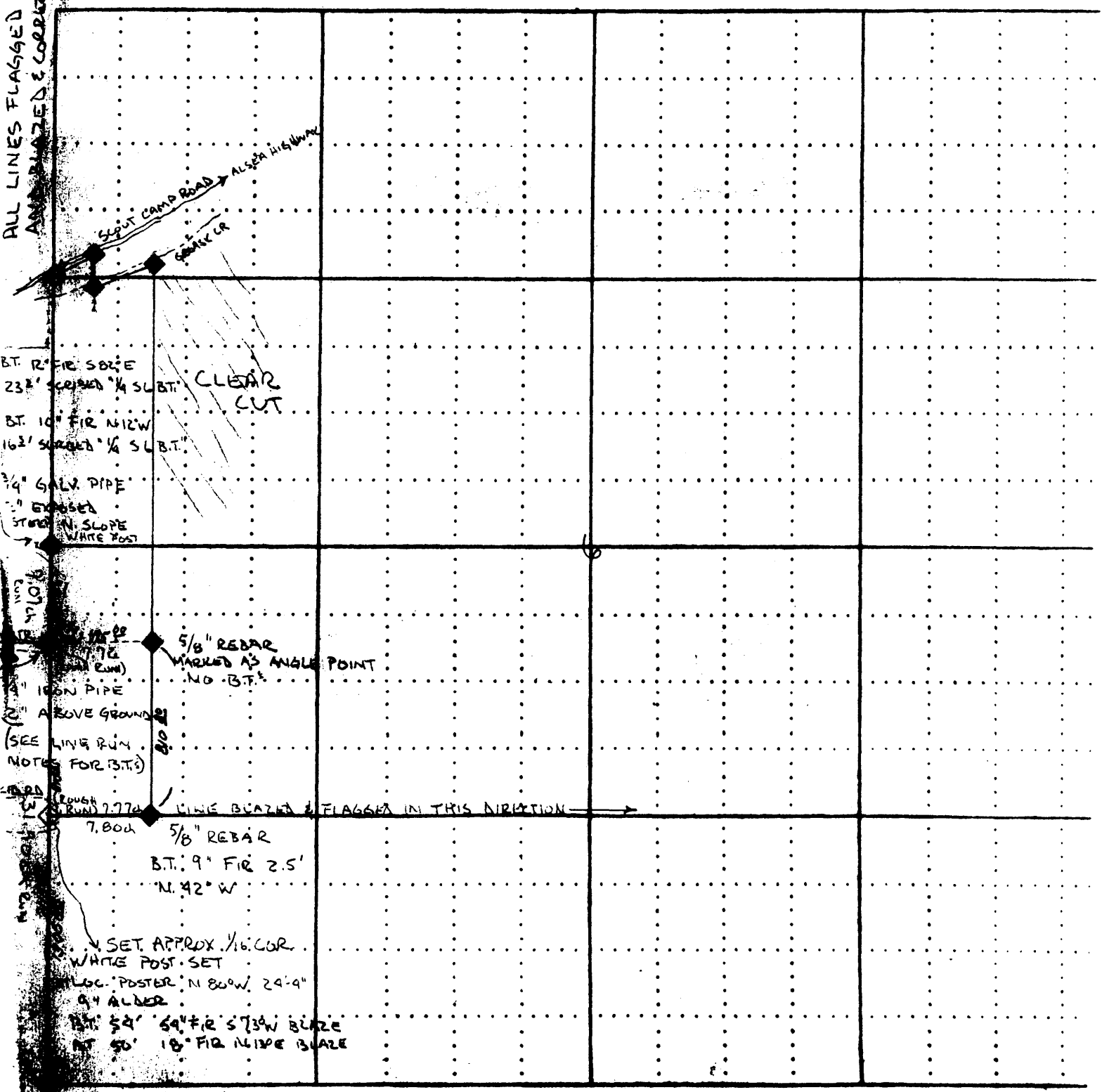
T. 13 S. R. 6 W. Sec. 6 Subdiv.

Mapped by S. H. WILLIAMS "FIELDWORK WILLIAMS, M. VOMKAL D. NEWTON Scale 8 inches = 1 Mile

SEPTEMBER 21, 1973

DELL. 20°-31'

ALL LINES FLAGGED AND BLAZED & CORRECTED



B.T. 12" FIR S 82° E
 23' S 82° E 1/4 S 1/4 B.T.
 CLEAR CUT

B.T. 10" FIR N 12° W
 16 1/2' S 82° E 1/4 S 1/4 B.T.

3/4" GALV. PIPE
 EXPOSED
 STAKE N. SLOPE
 WHITE POST

9' 10 1/2" IRON PIPE
 1" IRON PIPE
 ABOVE GROUND
 (SEE LINE RUN NOTES FOR B.T.)

5/8" REBAR
 MARKED AS ANGLE POINT
 NO B.T.

ROUGH RUN 7.774
 7.804

LINE BLAZED & FLAGGED IN THIS DIRECTION →

5/8" REBAR
 B.T. 9" FIR 2.5'
 N. 42° W

1/4 SET APPROX. 1/16" COR.
 WHITE POST SET
 LOC. POSTER. N 80° W. 24'-9"
 9" ALDER

B.T. 54' 54" FIR S 73° W BLAZE
 AT 50' 18" FIR N 13° E BLAZE

SECTION PLAT SHEET

OWNER STARKER FORESTS, INC

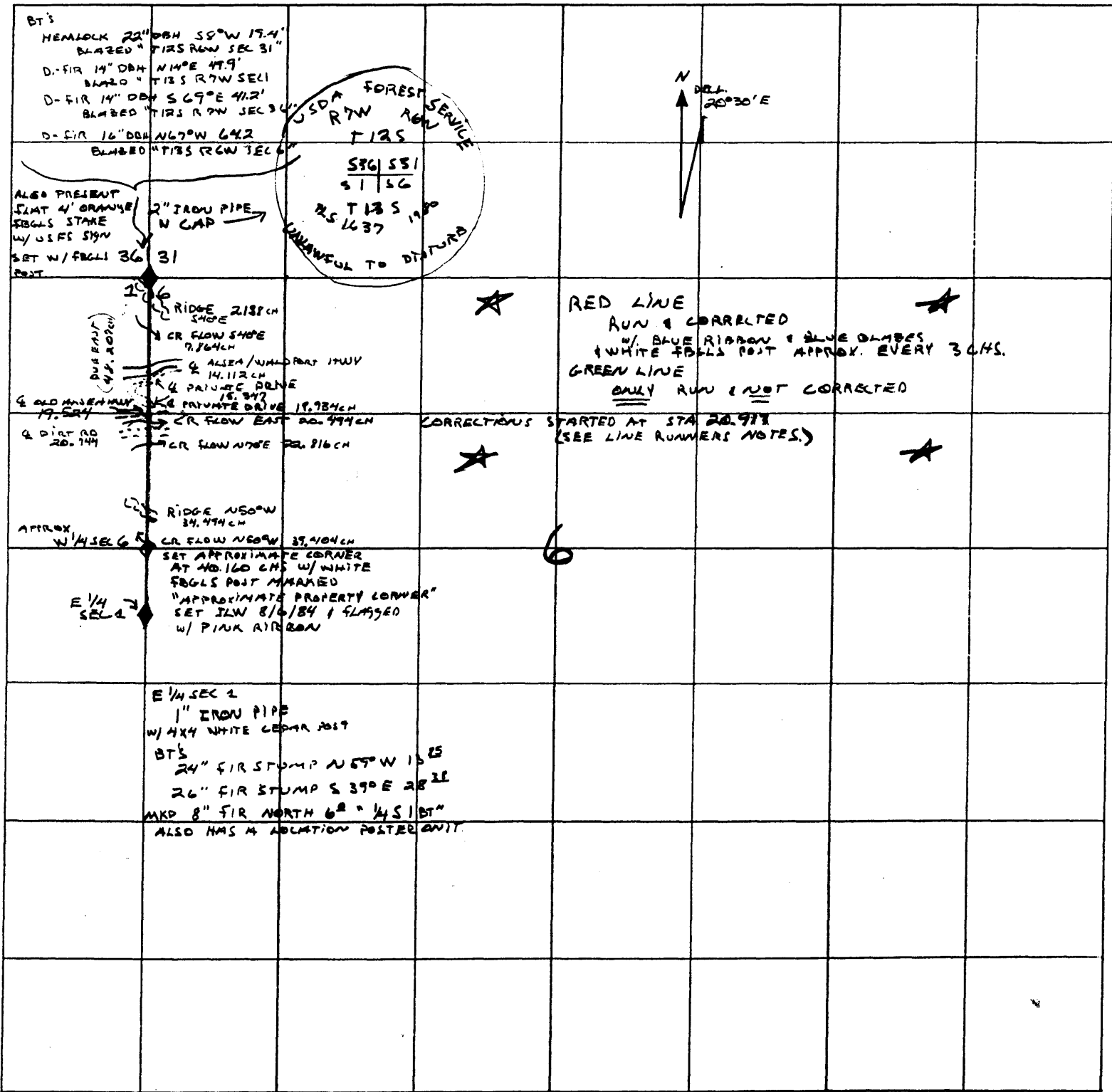
DATE 8/29/84

SECTION 6 TOWNSHIP 13S

RANGE 6W

COUNTY BENTON STATE OREGON

SCALE 1" = 200 FT



BY
John L. White

BENTON COUNTY CORNER RESTORATION FORM

3744

SECTION 6 TOWNSHIP 13 S RANGE 6 W DLC _____ CORNER W1/4

DATE 3-7-90 CORNER RESTORATION FIELD BOOK NUMBER _____ PAGE _____

CORNER DESIGNATION:

The West 1/4 corner of Section 6 only,
T13S, R6W

1/4

| S6

_____ CONDITION REPORT ONLY

_____ REFERENCED OUT

_____ RENEWED

XX SURVEYED IN

LOCATION AND COMMENTS:

Corner lies on East edge of clearcut and 150 ft.
South of small creek. Corner is 1400' South of old Alsea H/W.

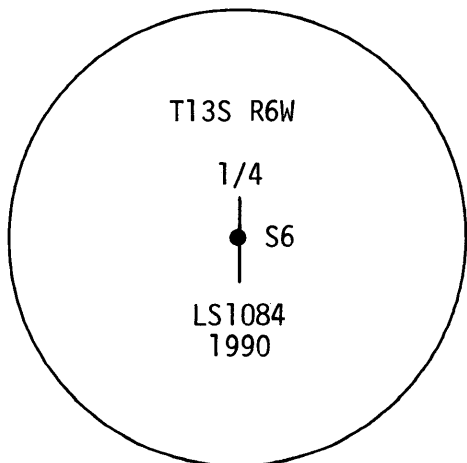
PREVIOUS RENEWALS/SURVEYS, ETC.:

- 1854 - Original survey by Gordon & Preston
- 1891 - Corner not recovered by Collier (subdivided T13S, R7W)
- 1972 - C.S. 5339 by K. Wightman
- 1972 - C.S. 5496 by W. Eimstad
- 1990 - C.S. by J. Peterson

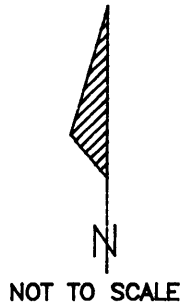
MONUMENTS AND ACCESSORIES FOUND (CONDITION AND SOURCE):

Found no trace of original corner or accessories
Set corner by single proportion method. SEE COUNTY SURVEY NO. B392.

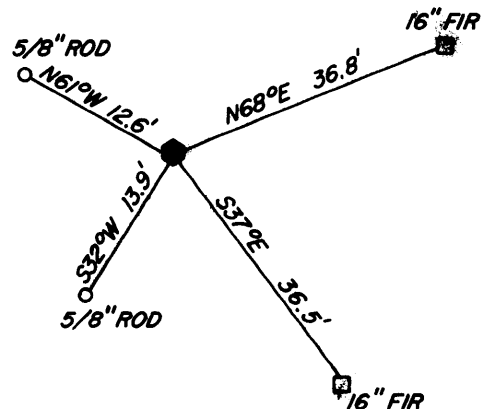
MONUMENT DETAIL



3 1/4" BRASS CAP



SKETCH



MONUMENT SET (PROCEDURES AND DESCRIPTION):

Set 2" (inside diameter) X 36" galvanized iron pipe with a 3 1/4" brass cap stamped as shown. Brass cap is 0.5 ft. above ground. Found 3/4" iron pipe (C.S. 5339) S01°50'W, 26.43 feet.

NEW ACCESSORIES :

BT's set:

- *1) 16" Fir, N68°E, 36.8 ft. Scribed "1/4 S6 BT"
- *2) 16" Fir, S37°E, 36.5 ft. Scribed "1/4 S6 BT"
- (C.S. 5339 BT - rescribed)
- 3) 5/8" X 30" iron rod with plastic cap (LS1084) flush with ground, N61°W, 12.6 ft.
- 4) 5/8" X 30" iron rod with plastic cap (LS1084) flush with ground, S32°W, 13.9 ft.

NOTES:

* Set PK nail with stainless steel washer in side center of base of BT. Compass declination = 20° East.
BT distances are to side center of tree

FIRM/AGENCY: J. Peterson & Associates, Land Surveyors
ADDRESS: 8155 NW Mitchel Drive
PARTY CHIEF: Corvallis, Oregon 97330 Phone: 757-1794
CREW:
WITNESS: Jim S. Peterson - Joe B. Hinds

REGISTERED PROFESSIONAL LAND SURVEYOR

Jim S. Peterson
 OREGON
 JULY 31, 1976
 JIM S. PETERSON
 1084

11-24-1998

TOWNSHIP 13 SOUTH, RANGE 6 WEST, WILLAMETTE MERIDIAN; SECTION 6 CORNER W 1/4
DONATION LAND CLAIM _____ CORNER _____**COMMON CORNER(S):**

THE EAST LINE OF SECTION 1 IN T13S, R7W.

CORNER RECORDS (PREVIOUS RENEWALS, SURVEYS, ETC.)

- [01] ORIGINAL GLO SURVEY BY HARVEY GORDON AND JOSIAH PRESTON, D.S., DATED FEBRUARY 28, 1855. *SET POST WITH 2 MAPLE BEARING TREES, MEASURED TO FACE.*
- [02] GLO BY ROBERT O. COLLIER, D.S., DATED JUNE 4, 1892. *DID NOT FIND.*
- [03] MAP NO. 13-6&7-00004 BY BENTON COUNTY, DATED MARCH 14, 1923. *SHOWS GLO INFORMATION.*
- [04] STARKER FOREST MAP BY STARKER FORESTS, DATED 1959. *MAY HAVE FOUND.*
- [05] STARKER FOREST MAP BY STARKER FORESTS, DATED OCTOBER 9, 1972. *1 1/4" IRON PIPE WITH 2 FIR BEARING TREES (SAME BEARING TREES AS RECORD [06]).*
- [06] COUNTY SURVEY NO. 5339 BY KEN WIGHTMAN, P.L.S., DATED OCTOBER 14, 1972. *SET 3/4" PIPE AND 2 NEW BEARING TREES FROM CREEK CALL.*
- [07] CORNER RESTORATION NO. 1864. *TRANSCRIBED FROM RECORD [06] AND CONTAINS ERRORS AND OMISSIONS.*
- [08] COUNTY SURVEY NO. 5496 MAP BY WILLIAM EIMSTAD, P.L.S., DATED APRIL 72 TO APRIL 1973. *CREATES PROPORTIONED POSITION, DID NOT MONUMENT.*
- [09] COUNTY SURVEY NO. 5496 LETTER BY WILLIAM EIMSTAD, P.L.S., DATED MAY 1, 1973. *REJECTS RECORD [06] MONUMENT.*
- [10] STARKER FOREST MAP BY STARKER FORESTS, DATED SEPTEMBER 21, 1973. *FOUND 3/4" PIPE AND 2 BEARING TREES.*
- [11] STARKER FOREST MAP BY JOHN WHITTLE, DATED AUGUST 29, 1984. *SET WHITE FIBERGLASS POST FOR APPROXIMATE CORNER.*
- [12] CORNER RESTORATION NO. 3744 BY JIM PETERSON, P.L.S., DATED MARCH 7, 1990. *FINDS AND REJECTS RECORD [06] MONUMENT, SETS BRASS CAP WITH 4 ACCESSORIES BY SINGLE PROPORTIONATE MEASUREMENT.*
- [13] COUNTY SURVEY NO. 8392 BY JIM PETERSON, P.L.S., DATED MARCH 13, 1990. *DOES NOT FIND ORIGINAL CORNER OR ACCESSORIES, FINDS AND REJECTS RECORD [06] MONUMENT. SET BRASS CAP BY SINGLE PROPORTIONATE MEASUREMENT.*
- [14] COUNTY SURVEY NO. 9076 BY JIM PETERSON, DATED NOVEMBER 18, 1997. *FOUND BRASS CAP AS PER RECORD [12]*

COMMENTS/LOCATION/ETC:**NOTES:**

THIS IS A MICROSOFT WORD 97 DOCUMENT NAMED "36100640" CREATED FROM A BOILER PLATE DOCUMENT NAMED "HISTORY", WHICH HAS A STYLESHEET NAMED "CORNER" ATTACHED TO IT.

INFORMATION IN ***BOLD ITALICS*** IS COUNTY STAFFS' INTERPRETATION OF THE RECORD.

FIRM/AGENCY: BENTON COUNTY SURVEYOR'S OFFICE
ADDRESS: 360 S.W. AVERY AVE. CORVALLIS OR 97333; PH. 757-6821
RESEARCH BY: CURTIS J. LIESENFELT, P.L.S.
DATA ENTRY BY: DAVID M. DEAN, P.L.S