

136540300

CORNER FILE TRACKING

S:\Survey Corners\CORNERS\Templates\Filetrac2.doc
10/04/2010

CORNER NUMBER
136540300

STEP	HISTORY	RESTORATION
Form Prepared, DB	5/25/17	8/29/17
Field Inspection, DB	6/02/17	6/02/17
Finish index (count unit)	5/25/17	6/02/17
Counter Index	6/02/17	6/02/17
GIS Index Form	6/02/17	6/02/17
Checked, DB	8/31/17	8/31/17
Form Edited, DB	8/31/17	8/31/17
Form Signed, DB	9/5/17	9/5/17
Authorize Payment, DB	—	—
Archive Digital Files	9/5/17	9/5/17
Collect Documents	8/31/17	8/31/17
PDF File	9/6/17	9/6/17
Copy For Filming	9/6/17	9/6/17
Scanned (pdf to laserfiche)	9/6/17	9/6/17
Filmed (Archived), DB		
Filed, DB		

(DB) = Entry needed in database (Access).

COMMENTS:

DATE 05/25/2017

TOWNSHIP 13 SOUTH, RANGE 6 WEST, WILLAMETTE MERIDIAN; SECTION 23 CORNER SOUTH 1/4
DONATION LAND CLAIM N/A CORNER N/ACOMMON CORNER(S):

NORTH 1/4 CORNER SECTION 26

RECORDS (INFORMATION IN BOLD ITALICS IS COUNTY STAFFS' INTERPRETATION OF THE RECORD)

BASED ON EXTENSIVE RESEARCH AND RECOVERY OF EVIDENCE, THIS OFFICE HAS DETERMINED THAT MOST GENERAL LAND OFFICE SURVEYORS IN BENTON COUNTY MEASURED TO THE FACE OF BEARING TREES.

- [01] GENERAL LAND OFFICE (GLO) NOTES BY HARVEY GORDON AND JOSIAH W. PRESTON, D.S., DATED SEPTEMBER 7, 1854. SET POST FROM WHICH A MAPLE 12" DIA BEARS N6°E, 17 LINKS (11.22 FEET); A R. FIR 60" DIA BEARS S58°W, 41 LINKS (27.06 FEET).
- [02] BENTON COUNTY SURVEY NO. 1417 (OLD NO. 208) FIELD NOTES (FIELD BOOK 73, PAGE 30) BY W. C. GALLOWAY, C.S., DATED FEBRUARY 13, 1939. SET A CAR AXLE FROM FIR STUMP 60" DIA (GLO BT) BEARS S58°W, 0.41 CHAINS (27.06 FEET). CORNER 3' WEST OF DITCH, 12' SOUTH OF LARGER DITCH. FIR 2" DIA (IN FENCE) BEARS N80-1/2°E, 0.552 CHAINS (36.43 FEET); FIR 5" DIA BEARS N24°E, 0.992 CHAINS (65.47 FEET); OAK 8" DIA BEARS N42-1/2°W, 0.835 CHAINS (55.11 FEET).
- [03] BENTON COUNTY MAP NO. 13-6-00011 BY BURT WILKES, D.C.S., DATED MAY 21, 1914. CAR AXLE. FIR 2" DIA (CSBT) BEARS N80°E, 0.552 CHAINS (36.43 FEET); FIR 5" DIA (CSBT) BEARS N23°30'E, 0.992 CHAINS (65.47 FEET); OAK 8" DIA (CSBT) BEARS N43°W, 0.832 CHAINS (54.91 FEET).
- [04] BUREAU OF LAND MANAGEMENT (BLM) NOTES BY FRANK A. TUERS AND ROBERT L. AARSETH, CADASTRAL SURVEYORS, DATED SEPTEMBER 1, 1983. FROM THE 1/4 SECTION CORNER PERPETUATED AND RECORDED BY W. C. GALLOWAY, C.S., FROM ORIGINAL EVIDENCE NO LONGER IN EXISTENCE, MONUMENTED WITH AN AXLE, 1-1/4" DIA, FIRMLY SET, PROJECTING 6" ABOVE GROUND, FROM WHICH A FIR 40" DIA (CSBT) BEARS N24°E, 99 LINKS (65.34 FEET), WITH HEALED BLAZE; A FIR 34" DIA (CSBT) BEARS N80-1/2°E, 55-1/2 LINKS (36.63 FEET), WITH HEALED BLAZE; A DOUBLE OAK 18" DIA (CSBT) BEARS N42-1/2°W, 73-1/2 LINKS (48.51 FEET), WITH HEALED BLAZE. AT THE CORNER POINT SET AN IRON POST, 28" LONG, 2-1/2" DIA, 22" IN THE GROUND, DIRECTLY OVER AXLE, WITH BRASS CAP MARKED "T13S R6W S23 1/4 S26 1983" FROM WHICH A FIR 9" DIA BEARS S22°W, 25 LINKS (16.50 FEET), MARKED "1/4 S26 BT".
- [05] BENTON COUNTY SURVEY NO. 10012 BY JIM S. PETERSON, P.L.S., DATED FEBRUARY 4, 2004. FOUND 3-1/4" BLM BRASS CAP (1983). FOUND FIR 40" DIA (CSBT) BEARS N24°E, 99 LINKS (65.34 FEET), HEALED FACE; FIR 34" DIA (CSBT) BEARS N80-1/2°E, 55-1/2 LINKS (36.63 FEET), HEALED FACE; DOUBLE OAK 18" DIA (EAST FORK) (CSBT) BEARS N42-1/2°W, 73-1/2 LINKS (48.51 FEET), HEALED FACE; FIR STUMP 12" DIA (BLM BT) BEARS S22°W, 25 LINKS (16.50 FEET), NO MARKS VISIBLE. CORNER LIES 15' SOUTH OF SMALL CREEK AND 20' SOUTH OF EAST-WEST FENCE.

FIRM/AGENCY: BENTON COUNTY SURVEYOR'S OFFICE
ADDRESS: 360 S.W. AVERY AVE., CORVALLIS, OR 97333; PH. 541-766-6821
RESEARCH BY: DAVID L. MALONE, P.L.S.
DATA ENTRY BY: SAME

**BENTON COUNTY CORNER RESTORATION FORM, PAGE 1 OF 2, 136540300R3
SEE CORNER HISTORY FORM FOR RECORDS ETC.**

CORNER RESTORATION FIELD BOOK NUMBER 31 PAGE(S) 39 DATE 06/02/2017
TOWNSHIP 13 SOUTH, RANGE 6 WEST, WILLAMETTE MERIDIAN; SECTION 23 CORNER SOUTH 1/4
DONATION LAND CLAIM N/A CORNER N/A
CONDITION REPORT ; REFERENCED OUT X; RENEWED ; SURVEYED IN ;

LOCATION AND COMMENTS:

CORNER IS LOCATED IN AN AREA THAT WAS CLEAR CUT ±10 YEARS AGO, ON THE STEEP WEST BANK OF A SMALL CREEK, ABOUT 15 FEET SOUTH OF AN INTERSECTION WITH A SLIGHTLY LARGER CREEK. TO REACH CORNER FROM THE INTERSECTION OF BUNKER HILL ROAD AND HELLS CANYON ROAD, FOLLOW HELLS CANYON ROAD FOR 1.86 MILES TO A GATED ROAD ON THE RIGHT, TRAVEL THROUGH GATE FOR 0.26 MILES TO A WYE, STAY RIGHT FOR 0.23 MILES TO A WYE, STAY RIGHT FOR 0.30 MILES TO A WYE, STAY LEFT FOR 0.09 MILES TO WIDE SPOT ON LEFT AND PARK. WALK APPROXIMATELY S45°W, 450 FEET TO THE CORNER. CORNER IS POOR FOR PREMARKING AND GPS CONTROL.

MONUMENTS AND ACCESSORIES FOUND (CONDITION AND SOURCE):

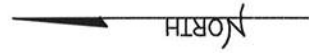
1. FOUND 3-1/4" BRASS CAP ON 2-1/2" IRON PIPE, UP 5" ABOVE GROUND SURFACE, FIRMLY SET AND UNDISTURBED FOR THE CORNER, AND MARKED AS SHOWN ON PAGE 2 OF 2. AN 11" X 7" X 6" STONE LIES ABOUT N45°E, 17".
(SET POST PER RECORD [01]).
(SET CAR AXLE PER RECORD [02]).
(CAR AXLE PER RECORD [03]).
(FOUND AXLE, 1-1/4" DIA, FIRMLY SET, PROJECTING 6" ABOVE GROUND. SET AN IRON POST, 28" LONG, 2-1/2" DIA, 22" IN THE GROUND, DIRECTLY OVER AXLE, WITH BRASS CAP MARKED "T13S R6W S23 1/4 S26 1983" PER RECORD [04]).
(FOUND 3-1/4" BLM BRASS CAP PER RECORD [05]).
2. FOUND D. FIR STUMP 48" DIA BEARS N24°17'E, 65.08 FEET TO CENTER, WITH NO VISIBLE MARKS.
(FIR 5" DIA BEARS N24°E, 0.992 CHAINS [65.47 FEET] PER RECORD [02]).
(FIR 5" DIA BEARS N23°30'E, 0.992 CHAINS [65.47 FEET] PER RECORD [03]).
(FIR 40" DIA BEARS N24°E, 99 LINKS [65.34 FEET] WITH HEALED BLAZE PER RECORD [04]).
(FOUND FIR 40" DIA BEARS N24°E, 99 LINKS [65.34 FEET] WITH HEALED FACE PER RECORD [05]).
3. FOUND D. FIR STUMP 36" DIA BEARS N80°30'E, 36.22 FEET TO CENTER WITH NO VISIBLE MARKS. THE STUMP HAS REMAINS OF FENCE WIRE CONTAINED WITHIN THE TREE GROWTH. **BASIS OF BEARINGS FOR THIS RESTORATION.**
(FIR 2" DIA (IN FENCE) BEARS N80-1/2°E, 0.552 CHAINS [36.43 FEET] PER RECORD [02]).
(FIR 2" DIA BEARS N80°E, 0.552 CHAINS [36.43 FEET] PER RECORD [03]).
(FIR 34" DIA BEARS N80-1/2°E, 55-1/2 LINKS [36.63 FEET] WITH HEALED BLAZE PER RECORD [04]).
(FIR 34" DIA BEARS N80-1/2°E, 55-1/2 LINKS [36.63 FEET] WITH HEALED FACE PER RECORD [05]).

MONUMENT SET (PROCEDURES AND DESCRIPTION):

FOUND 3-1/4" BRASS CAP ON 2-1/2" IRON PIPE, UP 5" ABOVE GROUND SURFACE, FIRMLY SET AND UNDISTURBED FOR THE CORNER, AND MARKED AS SHOWN ON PAGE 2 OF 2. BRASS CAP AND IRON PIPE WERE SET BY THE BUREAU OF LAND MANAGEMENT (BLM) IN 1983 OVER AN AXLE SET BY W. C. GALLOWAY, C.S., IN 1939 FROM A GENERAL LAND OFFICE (GLO) STUMP. THE GLO STUMP IS NOW GONE AND THE OAK BEARING TREE SET BY GALLOWAY IS NOW UPROOTED AND LYING ON THE GROUND. THE TWO REMAINING FIR BEARING TREES SET BY GALLOWAY ARE NOW STUMPS. THE BRASS CAP IS ACCEPTED AS A PERPETUATION OF THE ORIGINAL CORNER POSITION.

SET FOUR NEW IRON ROD ACCESSORIES AS SHOWN ON PAGE 2 OF 2. SET 6 FOOT ORANGE CARSONITE "SURVEY MARKER" POST 1 FOOT EAST OF BRASS CAP. FOUND WHITE FIBERGLASS POST LYING ON GROUND. RESET 1 FOOT NORTH OF BRASS CAP.

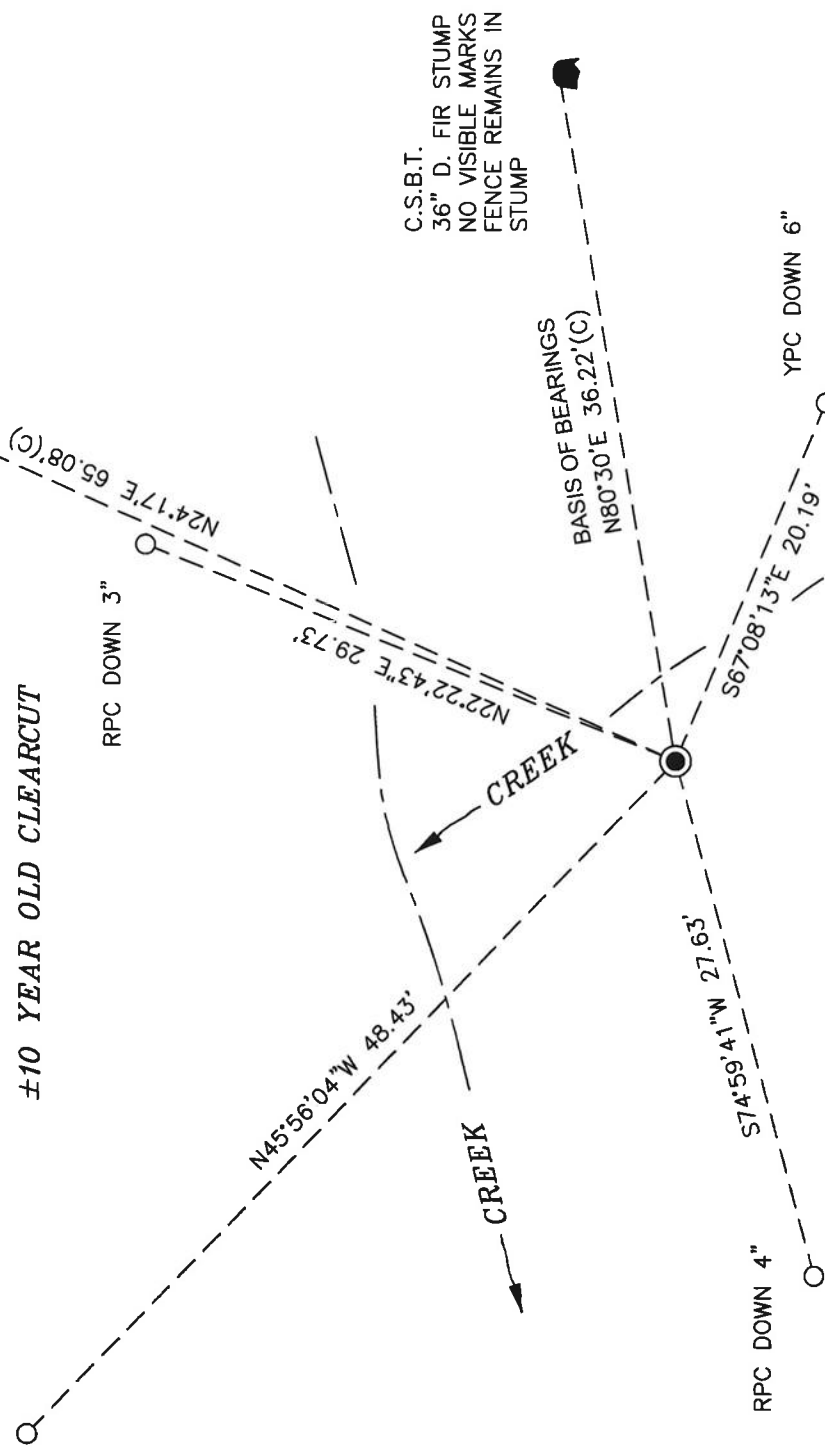
C.S.B.T.
48" D. FIR STUMP
NO VISIBLE MARKS



1" = 10'

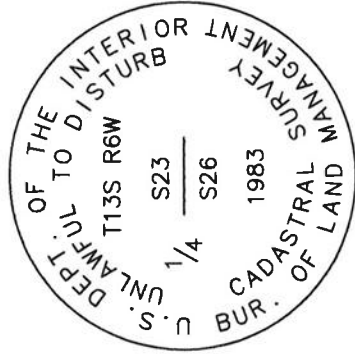
BASIS OF BEARINGS
C.S. 1417

YPC DOWN 3"
±10 YEAR OLD CLEARCUT
RPC DOWN 3"



C.S.B.T.
36" D. FIR STUMP
NO VISIBLE MARKS
FENCE REMAINS IN
STUMP

MONUMENT DETAIL
±10 YEAR OLD CLEARCUT



3-1/4" BRASS CAP

NEW ACCESSORIES:

1. SET REBAR (SEE LEGEND) N22°22'43"E, 29.73 FEET AND 3 INCHES BELOW GROUND LEVEL.
2. SET REBAR (SEE LEGEND) S67°08'13"E, 20.19 FEET AND 6 INCHES BELOW GROUND LEVEL.
3. SET REBAR (SEE LEGEND) S74°59'41"W, 27.63 FEET AND 4 INCHES BELOW GROUND LEVEL.
4. SET REBAR (SEE LEGEND) N45°56'04"W, 48.43 FEET AND 3 INCHES BELOW GROUND LEVEL.

NOTES:

COMPASS DECLINATION IS 16' EAST. ALL MEASURED DISTANCES AND BEARINGS ARE TO THE CENTER OF THE OBJECT, UNLESS OTHERWISE NOTED. ALL BEARING TREES ARE PAINTED AND HAVE A B.T. TAG ATTACHED, FACING THE CORNER UNLESS OTHERWISE NOTED.

REGISTERED
PROFESSIONAL
LAND SURVEYOR

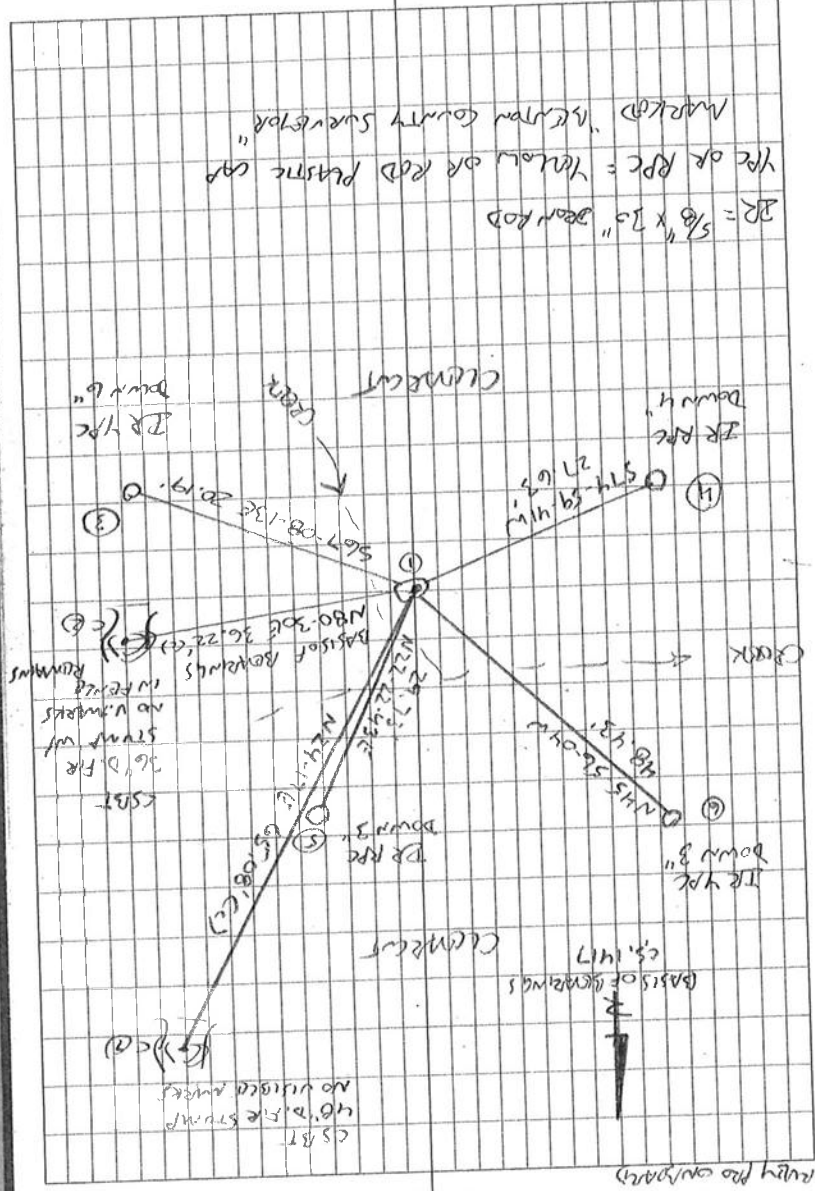
David L. Malone

9/6/17

OREGON
JANUARY 12, 1999
DAVID L. MALONE
51523

THIS RESTORATION WAS PERFORMED AT THE DIRECTION AND APPROVAL OF
THE BENTON COUNTY SURVEYOR *[Signature]*

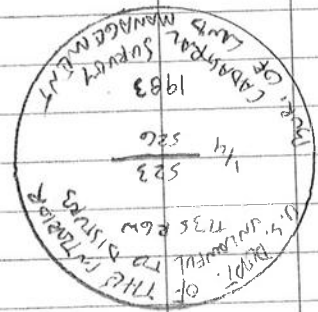
FIRM/AGENCY: BENTON COUNTY SURVEYOR'S OFFICE
ADDRESS: 360 S.W. AVERY AVE., CORVALLIS, OR 97333; PH. 541-766-6821
PRESENT: DAVID L. MALONE, P.L.S. AND BERNARD ALTENBACH, SURVEY TECH.
EQUIPMENT: NIKON NIVO3.C WITH SURVEY PRO ONBOARD



34/39

WARM, CLERM
 6/21/2017
 T. MAHRE
 B. ATENRICH
 Nikon N103.C
 Survey pro camera

IR = 5/8" x 3/8" DEAN ROD
 YR OR RPC = "HOLE" OR RED PLASTIC CAP
 MARKED "KELTON COUNTY SURVEYOR"



#1

FD 3-1/4" BRASS CAP ON 2-1/2" DEAN PIPE UP 5"
 ABOVE GROUND SURFACE, FRONT SET AND UNDISTURBED
 FOR THE CORNER. FD 11" x 7" x 6" STONE 17" N45° E.
 FD WHITE FINGERGLASS POST LYING ON GROUND. FD 2 FIRE
 CAST IR STUMPS. HEAD 1 FOR BASIS OF BENCHMARKS.
 SET 4 NEW IRON ROD ACCESSORIES, OAK CIST LYING
 ON GROUND, UPROOD. BRASS CAP ABOUT 4-1/2 WEST OF
 SMALL CORNER AND 15' SOUTH OF SMOOTH LARGE
 CORNER. SET ORANGE 6' CARBONITE POST 1' EAST OF
 BRASS CAP AND WHITE FINGERGLASS POST 1' NORTH
 OF BRASS CAP.

REFERENCE T 135 ROW 1/4 26
 23

136540300