

136600100

CORNER FILE TRACKING

H:\Survey\Corners\Misc\Filetrac2.doc
06/15/2003

CORNER NUMBER
136600100

STEP	HISTORY()	RESTORATION()
Form Prepared, DB	9/17/07	9/19/07
Field Inspection, DB	9/18/07	9/18/07
Form Checked, DB	9/21/07	9/21/07
Form Edited, DB	9/21/07	9/21/07
Form Signed, DB	9/21/07	9/21/07
Counter Index	9/18/07	9/18/07
GIS Index	9/19/07	9/19/07
Authorize Payment, DB	---	---
Archive Digital Files	10/2/07	10/2/07
Collect Documents	10/2/07	10/2/07
Scanned	10-2-07	10-2-07
Copy For Filming	10/2/07	10/2/07
Filed, DB		
Finish index (count unit)	9/18/07	9/18/07
Filmed (Archived). DB		
Document No's to Andrew		

(DB) = Entry needed in database (Access)

COMMENTS:

DATE 09/17/2007TOWNSHIP 13 SOUTH, RANGE 06 WEST, WILLAMETTE MERIDIAN; SECTION 35 CORNER SOUTHEAST
DONATION LAND CLAIM N/A CORNER N/A**COMMON CORNER(S).**

SOUTHWEST OF SECTION 36

RECORDS (INFORMATION IN BOLD ITALICS IS COUNTY STAFFS' INTERPRETATION OF THE RECORD)

BASED ON EXTENSIVE RESEARCH AND RECOVERY OF EVIDENCE, THIS OFFICE HAS DETERMINED THAT MOST GENERAL LAND OFFICE SURVEYORS MEASURED TO THE FACE OF BEARING TREES

- [01] GENERAL LAND OFFICE (GLO) NOTES BY H GORDON, D S AND I PRESTON, D S , DATED AUGUST 22, 1854 SET A POST. MARKED A 15" W. OAK N9°E 110 LKS. (72.60 FT.) AND A 6" W. OAK N77°W 130 LKS. (85.80 FT.).
- [02] COUNTY SURVEY NO 182 (OLD NO 82) FIELD NOTES (BOOK 6, PAGE 11) BY J A GANONG, D C S , DATED JULY 21, 1910 SET A 4"X4"X24" OAK POST. FOUND NORTH TREE (GLO BT) STANDING. MARKED AN 18" FIR N29°30'E 0.295 CHS. (19.47 FT.) AND A 14" FIR N54°30'W 0.460 CHS. (30.36 FT.)
- [03] CORNER RESTORATION BOOK NO 1, PAGE 59 BY J A GANONG, D C S , NO DATE GIVEN SET A 4"X4"X24" OAK POST. FOUND ORIGINAL STAKE IMPRINT AND ONE GLO TREE STANDING. MARKED AN 18" FIR N29°30'E 0.295 CHS. (19.47 FT.) AND A 14" FIR N54°30'W 0.460 CHS. (30.36 FT.)
- [04] CORNER RESTORATION NO 2413 TRANSCRIBED FROM RECORD [03] AND MAY CONTAIN ERRORS AND/OR OMISSIONS.
- [05] BENTON COUNTY MAP NO 13-6-00017 BY W C GALLOWAY, C S , DATED SEPTEMBER 28, 1916 OAK STAKE.
- [06] COUNTY SURVEY NO 612 (OLD NO 82) FIELD NOTES (BOOK 24, PAGE 39) BY W C GALLOWAY, C S , DATED OCTOBER 25, 1917 CORNER TIED, BUT NOT DESCRIBED.
- [07] COUNTY SURVEY NO 637 (OLD NO 190) FIELD NOTES (BOOK 26, PAGE 14) BY W C GALLOWAY, C.S , DATED AUGUST 19, 1918 CORNER TIED, BUT NOT DESCRIBED.
- [08] LOOSE LEAF NOTES FOR PROJECT NO 25100-01-77 BY T PARSONS, SURVEY TECH , DATED DECEMBER 20, 1977 FOUND A 1" IRON BAR (ORIGIN UNKNOWN). MARKED AN 8" MADRONE N47°E 30.50 FT., MARKED "13-6S36BT" AND AN 8" MAPLE N55°W 63.30 FT., MARKED "13-6S35BT".
- [09] CORNER RESTORATION NO 1952 TRANSCRIBED FROM RECORD [08] AND MAY CONTAIN ERRORS AND/OR OMISSIONS.
- [10] BUREAU OF LAND MANAGEMENT (BLM) NOTES BY F TUERS, CADASTRAL SURVEYOR AND R AARSETH, CADASTRAL SURVEYOR, DATED SEPTEMBER 1, 1983 FOUND A 1" IRON ROD, 0.01 CHS. (0.66 FT.) NORTH OF 3RD STANDARD PARALLEL. FOUND A 10" MADRONE (CSBT) N48 1/2°E 46 1/2 LKS. (30.69 FT.), WITH SCRIBE MARKS "13-6S36BT" VISIBLE ON PARTIALLY HEALED BLAZE AND A 11" MAPLE N55°W 96 LKS (63.36 FT.), WITH SCRIBE MARKS "13-6S35BT" VISIBLE ON PARTIALLY HEALED BLAZE. SET A 2 1/2"X28" IRON POST, 22" IN THE GROUND , WITH A BRASS CAP AT THE TRUE CORNER POSITION ON THE 3RD STANDARD PARALLEL. MARKED A 15" FIR N24 1/2°E 53 LKS. (34.98 FT.), MARKED "T13SR6WS36BT" AND A 17" FIR N79 3/4°W 181 LKS. (119.46 FT.), MARKED "T13SR6WS35BT". ADDED MARKS "AM" TO IRON ROD.

NOTES:

THIS IS A MICROSOFT WORD 2000 DOCUMENT NAMED "36600100" CREATED FROM A BOILER PLATE DOCUMENT NAMED "HISTORY", WHICH HAS A STYLESHEET NAMED "CORNER" ATTACHED TO IT

FIRM/AGENCY. BENTON COUNTY SURVEYOR'S OFFICE
ADDRESS: 360 S W AVERY AVE CORVALLIS OR 97333, PH 766-6821
RESEARCH BY: BERNARD S ALTENBACH, SURVEY TECH
DATA ENTRY BY: SAME

BENTON COUNTY CORNER RESTORATION FORM, PAGE 1 OF 2, 136600100R2

SEE CORNER HISTORY FORM FOR RECORDS ETC.

CORNER RESTORATION FIELD BOOK NUMBER 25 PAGE(S) 75 DATE 09/18/2007
TOWNSHIP 13 SOUTH, RANGE 6 WEST, WILLAMETTE MERIDIAN, SECTION 35 CORNER SOUTHEAST
DONATION LAND CLAIM NONE CORNER N/A
CONDITION REPORT ; REFERENCED OUT ; RENEWED XX; SURVEYED IN

LOCATION AND COMMENTS.

CORNER IS LOCATED ON A FLAT ASPECT IN A ±5 YEAR OLD D FIR PLANTATION TO REACH CORNER FROM THE JUNCTION OF BELLFOUNTAIN AND HULL ROADS, TRAVEL SOUTHERLY ON BELLFOUNTAIN ROAD FOR 1 75 MILES, THEN RIGHT ON PRIVATE ACCESS ROAD (PASSING THROUGH LOCKED GATE) FOR 0 05 MILES, THEN LEFT ON SPUR ROAD FOR 0 57 MILES AND PARK AT BLOCKED ROAD, THEN WALK S70°E, ±5 CHAINS TO CORNER CORNER IS POOR FOR PREMARKING AND GPS CONTROL

MONUMENTS AND ACCESSORIES FOUND (CONDITION AND SOURCE):

- 1 FOUND 3 1/4" BRASS CAP ON 2 1/2" OUTSIDE DIAMETER IRON PIPE 2" ABOVE GROUND LEVEL FOR CORNER POSITION (SET 2 1/2" X 28" IRON POST, 22" IN THE GROUND WITH A BRASS CAP AT THE TRUE CORNER POSITION ON THE 3RD STANDARD PARALLEL AND 0 66 FEET NORTH OF 1" IRON ROD PER RECORD [10])
- 2 FOUND 1" IRON ROD, 2" BEOLW GROUND LEVEL, N3°38'E, 0 58 FEET (FOUND 1" IRON BAR OF UNKNOWN ORIGIN AT CORNER POSITION PER RECORD [09]) (FOUND 1" IRON ROD, NORTH, 0 66 FEET (0 01 CHAINS) PER RECORD [10])
- 3 FOUND 21" MAPLE WITH HEALED FACE, N52°39'W, 63 34 FEET TO CENTER SET ALUMINUM NAIL AND PLASTIC WASHER IN SOUTHWESTERLY BASE FOR DISTANCE MEASUREMENT (MARKED AN 8" MAPLE, N55°W, 63.30 FEET FROM 1" "IRON BAR" PER RECORD [09]) (FOUND AN 11" MAPLE WITH SCRIBE MARKS, N55°W, 63 36 FEET PER RECORD [10])
- 4 FOUND ROTTEN ±14" MADRONE STUMP WITH MULTIPLE SPROUTS, N44°22'E, 31 09 FEET TO APPROXIMATE CENTER (MARKED AN 8" MADRONE, N47°E, 30 50 FEET FROM 1" "IRON BAR" PER RECORD [09]) (FOUND 10" MADROND, N48 1/2°E, 30 69 FEET PER RECORD [10])
- 5 FOUND 25" X 10' TALL D FIR STUMP WITH HEALED FACE, N24°30'E, 35 17 FEET TO CENTER SET ALUMINUM NAIL AND PLASTIC WASHER IN SOUTHEASTERLY BASE FOR DISTANCE MEASUREMENT (MARKED A 15" FIR, N24 1/2°E, 34 98 FEET PER RECORD [10])
- 6 FOUND 32" D FIR WITH HEALED FACE, N79°40'W, 119 63 FEET TO CENTER SET ALUMINUM NAIL AND PLASTIC WASHER IN SOUTHERLY BASE FOR DISTANCE MEASUREMENT (MARKED 17" FIR, N79 3/4°W, 119 46 FEET [181 LINKS] PER RECORD [10])

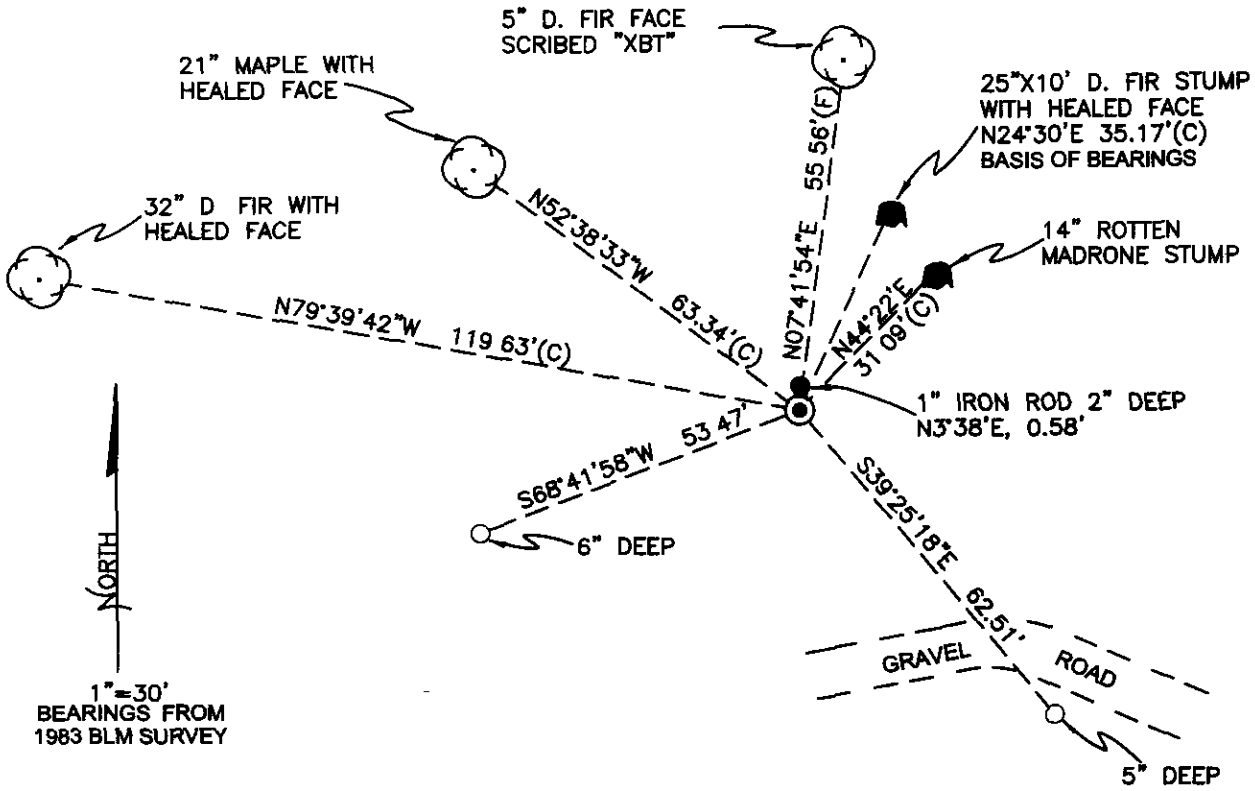
MONUMENT SET (PROCEDURES AND DESCRIPTION):

NO NEW MONUMENT WAS SET HELD RECORD [10] MONUMENT (PIPE WITH BRASS CAP) FOR CORNER POSITION ACCESSORIES ESTABLISHED IN RECORDS [01] AND [02] ARE NOW MISSING THE TOWNSHIP TO THE SOUTH (T14S, R6W) WAS SURVEYED FIRST, WITH THE NORTH LINE OF THIS TOWNSHIP BEING THE 3RD STANDARD PARALLEL SOUTH WHEN THE TOWNSHIP TO THE NORTH (T13S, R6W) WAS SURVEYED, THE STANDARD PARALLEL WAS RESURVEYED THORUGH THE PREVIOUS SET SECTION AND 1/4 CORNERS, SETTING NEW CORNERS FOR T13S, R6W RECORD [10] HAS TREATED THE SUBJECT CORNER AS A CLOSING CORNER AND SET THE "TRUE" CORNER ON THE TOWNSHIP BOUNDARY BETWEEN THE SECTION CORNER COMMON TO SECTIONS 1 AND 2 AND THE NORTH 1/4 CORNER OF SECTION 2 OF T14S, R6W (THIRD STANDARD PARALLEL SOUTH), ONE LINK SOUTH OF MONUMENT (1" IRON BAR) FIRST NOTED IN RECORD [09]

WE HAVE HELD RECORD [10] MONUMENT AS THE TRUE CORNER POSITION, TYING EXISTING REFERENCES AND SETTING THREE NEW REFERENCES SET A 6 FOOT ORANGE CARSONITE "SURVEY MARKER" POST 0 5 FEET SOUTH OF RECORD [10] MOMUMENT

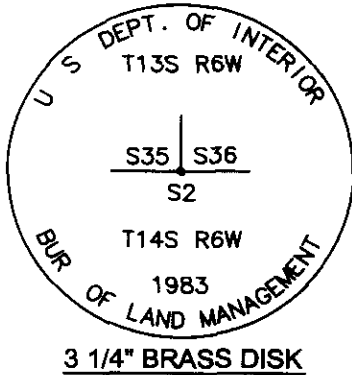
NOTE. IF THE BLM HAD NOT REMONUMENTED THE SUBJECT CORNER, WE WOULD HAVE TREATED THE 1" IRON ROD AS AN ANGLE POINT ON THE STANDARD PARALLEL, AS NO CLOSING LINES WERE EVER RUN

D. FIR AND HARDWOODS



±3 YEAR OLD D. FIR PLANTATION

MONUMENT DETAIL



LEGEND

- SET 5/8" X 30" REBAR WITH YELLOW PLASTIC CAP MKD "BENTON COUNTY SURVEYOR"
- FOUND MONUMENT AS NOTED
- (F) MEASUREMENT TO FACE
- (C) MEASUREMENT TO CENTER
- GOVERNMENT MONUMENT FOUND AS SHOWN
- BEARING TREE AS NOTED
- C.S.B.T COUNTY SURVEYORS BEARING TREE
- GLO GENERAL LAND OFFICE
- BEARING TREE STUMP AS NOTED

NEW ACCESSORIES:

1. SET REBAR (SEE LEGEND) 5" BELOW GROUND LEVEL S39°25'18"E, 62.51 FEET.
2. SET REBAR (SEE LEGEND) 6" BELOW GROUND LEVEL S68°41'58"W, 53.47 FEET.
3. 5" D FIR FACE SCRIBED "XBT" N07°41'54"E, 55.56 FEET TO FACE. SET ALUMINUM NAIL AND PLASTIC WASHER BELOW SCRIBING FOR DISTANCE AND ANGLE MEASUREMENT.

NOTES

COMPASS DECLINATION IS 20° EAST. ALL MEASURED DISTANCES AND BEARINGS ARE TO THE CENTER OF THE OBJECT, UNLESS OTHERWISE NOTED. ALL BEARING TREES ARE PAINTED AND HAVE A B.T. TAG ATTACHED, FACING THE CORNER UNLESS OTHERWISE NOTED. ALL NEW BEARING TREES HAVE A PLASTIC WASHER (STAMPED "BENTON COUNTY SURVEYOR CORNER RESTORATION") ATTACHED (BY ALUMINUM NAIL) TO THE FACE, BELOW THE "BT" FOR DISTANCE AND ANGLE MEASUREMENT UNLESS OTHERWISE NOTED. THE DRAWING IS FROM AUTOCAD RELEASE 2006

THIS RESTORATION WAS PERFORMED AT THE DIRECTION AND APPROVAL OF THE BENTON COUNTY SURVEYOR. DM

FIRM/AGENCY BENTON COUNTY SURVEYOR'S OFFICE
 ADDRESS 360 S.W. AVERY AVE CORVALLIS OR 97333; PH 766-6821
 PRESENT DAVID M. DEAN, P.L.S. AND BERNIE ALTENBACH, SURVEY TECH.
 EQUIPMENT. LEICA TCE 1105 WITH TDS ON BOARD

REGISTERED
 PROFESSIONAL
 LAND SURVEYOR

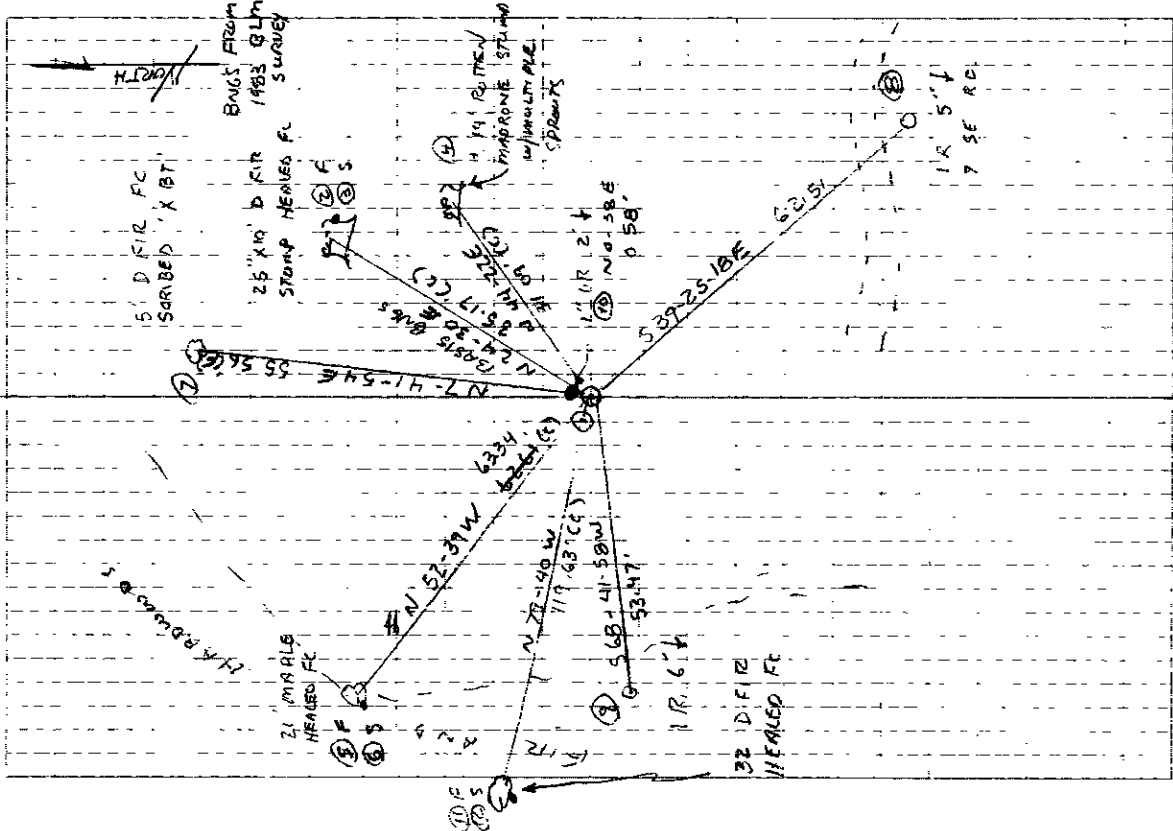
9/21/07 *David M. Dean*

OREGON
 JULY 13, 1984
 DAVID M. DEAN
 2090

RENEWAL DATE: 12/31/07

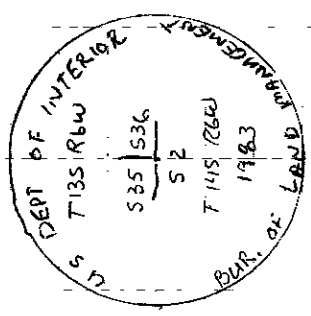
9-18-07 25/75
 D DEAN
 R ALTENBACH

CADY, MILD
 64°F, 29.7" Hg
 LEICA TCR 105 / PDS



136 600 100
 PERPETUATING & REFERENCING 35/36 TISS RW

Fd 3 1/4 BRASS CAP ON 2 1/2" O.D. I.P. 34
 BLM IN 1983 FOR COR. POSITION, Fd
 1" IR 0.66" N. 44" AND 2" UNKNOWN
 ORIGIN. 660 BT'S BOTH MISSING, RECORD
 [02] BT'S BOTH MISSING (ROCK HOLE @ NW),
 Fd STAMP & MADRONE SPROUTS @ NE RECORD
 [08] BT. 1" D 21" MAPLE (N 55 W, 633)
 w/ HEALED FACE - RECORD [08] NW BT
 Fd 1983 BLM BT'S, 1" " X 10" D FIR
 STAMP w/ HEALED FC (N 29 3/4° E, 3478) 2"
 D FIR w/ HEALED FC (N 77 3/4 W 1946)
 HELD BLM BC AND SET NEW REFS
 SET 6" CARBONITE 'SURVEY MARKER' POST
 0 5 SOUTH OF BLM MON



3 1/4" BRASS CAP

4-9-37
S. G. S.
S. G. S.

Survey #81 ✓ Cor. of Sec 14 R. in T115 Q6 W.
Set Oak Stake 4x4x24" for Cor. 1 tree & stump standing.
Marked with Fir 15" diam bears S 44° 15' E. 6.54 Chs dist
Witnesses J. G. Samson & Carl Satten

" #82 ✓ NW. Cor. of Chin Beldnap H.C. # 56 in T. 145. Q6 W. (original stake)
Set Oak stake 4x4x30" for Cor. 2 trees standing, East corner in part
Marked, Fir 10" diam bears N 15° 30' E. 9.10 Chs dist
Oak 14" " " 558° 30' E. 1.719 " "
" 20" " " 528° 45' W. 1.260. " "
Witnessed by Jas. G. Samson and W.S. Humphreys

" #82 ✓ W.E. Cor of Chin Beldnap H.C. #58 in T145. Q6 W.
Set 3/4" x 3/4" pipe for Cor. one tree standing. (on in road)
Marked, Fir diam bears N 6° 45' E. 4.786 Chs dist.
Oak 14" " " 515° E. 2.337 "
Stump on top of house bears N 31° 30' W.
Church spire on Church 55° 00' E. at Beldnap.
Witnesses same as above

" #82 ✓ Cor of Tps. 135. Rs. 5+6 W. C.C. on 3rd. Std. parallel. (at point of stake)
Set oak stake 4x4x30" for Cor. East tree standing 3/4" rod (2-1953 46)
Marked, Fir 4" diam bears N 37° 30' W. 1.80 Chs dist.
Witnesses same as for NW. cor of 56.

" #82 ✓ ~~Stand~~ Cor of Secs 35+36 in T135 Q6 W. on 3rd. std. parallel.
Set oak post 4x4x24" for Cor. 1 tree standing. original stake in part
Marked, Fir 18" diam. bears N 29° 30' E. 1.295 Chs dist.
" 14" " " 754° 30' W. 4.60 " "
Witnesses Samson & Humphreys.

" #82 ✓ 1/4 Cor. det. Secs. 1+2 in T145 Q6 W.
Set Oak Stake 4x4x18" for Cor. trees both standing, original stake in part.
Witnesses same as above.

" #40 Cont. NW. Cor. Geo Beldnap H.C. #58 in T158 Q6 W.
Set 1 1/2 x 30" pipe for Cor. orig trees standing. (in Cor. of Road).
Witnessed by Jas. Wilson Jr. & Jas G. Samson

" #40 Cont. S.E. Cor. Jemimah Starr H.C. # 53 in T158 Q6 W.
Set oak stake 4x4x30" for Cor. stump standing.
Marked, Fir 50" diam. bears S 42° E. 1.954 Chs dist on slope.
" 40" " " 515° W. 2.743 " " " "
" 52" " " N 8° 30' W. 1.665 " " " "
Witnesses same as to NW. cor of 58.

" #80 Cont. 1/4 Cor. det. Secs. 16+21 in T105 Q4 W.
Set oak cross handle for Cor. 11 trees standing SW. stump nearly gone.
Marked, Oak 10" diam. bears S 24° 45' E. 4.45 Chs dist

Take in

point

de imprint

Peters

hand

age

f

Corner Sections 35 and 36, Twp. 13 S R 6 W on 3rd standing parallel ²⁴ 3

Reestablishment by W. C. Galloway

Date _____

Set Oak post 4 x 4 x 24" for corner, 1 tree standing, original stake print
Fir 18" in diam bears N 24° 30' E .295 chains dist.
Fir 14" in diam bears N 54° 30' W .460 Chains dist.

Witnesses Ganong and Humphreys

BENTON COUNTY SURVEYORS OFFICE - CORNER RESTORATION

1952

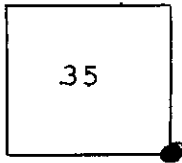
T 13 S R 6 W, W B & M, BENTON COUNTY

SECTION 35, 36

REPORTED BY Tyler Parsons

TITLE Survey Tech., Benton Co.

DATE 20 December 1977



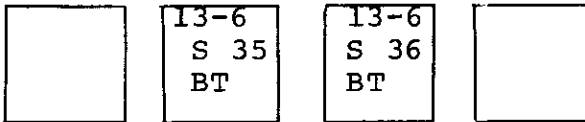
● OFFICIAL CORNER FOUND

○ CORNER SET

Sec CORNER COMMON TO SEC 35 & 36

IS STONE, IRON ROD, IRON PIPE, BRASS CAP OR OTHER SIZE 1"

LEGIBLE MARKS ON BEARING OBJECTS



	Maple	Madrone	
KIND			
SIZE	8"	8"	
BEARING	N 55 W	N 47 E	
DISTANCE	63.3	30.5	
DISTANCE			
TAG POSTED	no	no	

ADDITIONAL INFORMATION

No Existing BTs Found

Witnesses : D. Leever
D. Henderson

1937
W.C.B.
found.

Sunny # 81, Cor. of Sec. 14 & 2 in T11S R15 W.
Set Oak Stake 4x4x24" for Cor. 1 tree & stump standing.
Marked with Fir 15" diam bears S 44° 0' E. 6.3 H.C. dist.
Witnesses J.G. Lamony & Carl Suttler

82 N.W. Cor. of Chin Belding T1.C. # 56 in T14S R16 W. (original stake)
Set Oak stake 4x4x30" for Cor. 1 tree standing. End down in ground
Marked, Fir 10" diam bears N 15° 30' E. 9.10 Chs dist.
Oak 14" " " " 558° 30' E. 1.719 " "
" 20" " " " 528° 45' W. 1.260. "
Witnessed by Jas. G. Lamony and W.S. Humphrey

82 N.E. Cor. of Chin Belding T1.C. # 58 in T14S R16 W.
Set 3/4" x 3/4" pipe for Cor. one tree standing. (on in road)
Marked, Fir diam bears N 6° 45' E. 4.786 Chs dist.
Oak 14" " " " 515° E. 2.337 " "
Stump on Cypripedium of house bears N 31° 30' W.
Church spire on Church - 55° 00' E. at Beldingtown.
Witnessed same as above.

82 Cor. of Tps. 135. Rs. 5 & 6 W. C.C. on 3rd. Std. parallel.
Set Oak stake 4x4x30" for Cor. End tree standing. 1/2" rod (2-1935 H.C.)
Marked, Fir 44" diam bears N 39° 30' W. 1.80 Chs dist.
Witnesses same as for N.W. cor of 56.

82 ~~Stump~~ Cor. of Secs 35 & 36 in T13S R16 W. on 3rd std. parallel.
Set oak post 4x4x24" for Cor. 1 tree standing. original stake in ground.
Marked, Fir 18" diam bears N 29° 30' E. 1.295 Chs dist.
" 14" " " " 754° 30' W. .460 " "
Witnesses Lamony & Humphrey.

82 1/4 Cor. det. Secs. 14 & 2 in T14S R16 W.
Set Oak Stake 4x4x18" for Cor. trees both standing. Original stake in ground.
Witnesses same as above.

40 cont. N.W. Cor. Secs Belding T1.C. # 58 in T15S R16 W.
Set 1 1/2 x 30" pipe for Cor. orig trees standing. (in Cor. of Road).
Witnessed by Jas. Wilson Jr. & Jas. G. Lamony

40 cont. S.E. Cor. Joramiah Starr T1.C. # 53 in T15S R16 W.
Set oak stake 4x4x30" for Cor. stumps standing.
Marked, Fir 50" diam bears S 42° E. 1.954 Chs dist on slope.
" 40" " " " 515° W. 2.743 " "
" 52" " " " N 8° 30' W. 1.665 " "
Witnesses same as to N.W. cor of 58.

80 cont. 1/4 Cor. det. Secs. 16 & 21 in T10S R14 W.
Set oak saw handle for Cor. 11 trees standing SW. stump nearly gone.
Marked, Oak 30" diam bears S 24° 45' E. 4.45 Chs dist.
Witnesses same as to N.W. cor of 58.

Stake in ground

point

in ground

Peters

found.

age

st.

Corner Sections 35 and 36, Twp. 13 S R 6 W on 3rd standing parallel **2413**

Reestablishment by W. C. Galloway

Date _____

Set Oak post 4 x 4 x 24" for corner, 1 tree standing, original stake print
Fir 18" in diam bears N 24° 30' E .295 chains dist.
Fir 14" in diam bears N 54° 30' W .460 Chains dist.

Witnesses Ganong and Humphreys

136600100

BENTON COUNTY SURVEYORS OFFICE - CORNER RESTORATION

1952

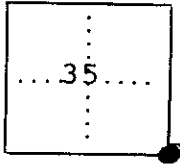
T 13 SR 6 W, W. B. & M., BENTON COUNTY

SECTION 35, 36

REPORTED BY Tyler Parsons

TITLE Survey Tech., Benton Co.

DATE 20 December 1977



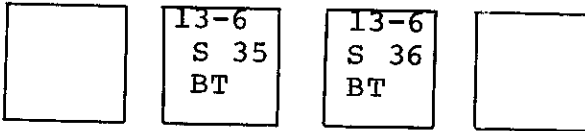
● OFFICIAL CORNER FOUND

○ CORNER SET

Sec. CORNER COMMON TO SEC. 35, & 36

IS STONE, IRON ROD, IRON PIPE, BRASS CAP OR OTHER SIZE 1"

LEGIBLE MARKS ON BEARING OBJECTS



	Maple	Madrone	
KIND			
SIZE	8"	8"	
BEARING	N 55 W	N 47 E	
DISTANCE	63.3	30.5	
DISTANCE			
TAG POSTED	no	no	

ADDITIONAL INFORMATION

No Existing BTs Found

Witnesses : D. Leever

D. Henderson