

C.S. 190
Continued

1/4 sec. cor. between secs. 35 & 36 T. 13 S. R. 6 W.

Set $\frac{3}{8}$ " x 24" bolt & washer in oak stake near
 Oak 12" in dia. bears N. 41° E. .54 ch. 1st
 Fir 24" " " " S. 60° W. .91 " "
 " 11" " " " N 32° W. .180 ch.

Witnesses Alex. Lehigh, Carl Ingram & O.B. Ingram Aug 20, 1918.

1/4 sec. cor. between secs. 24 & 35 T. 13 S. R. 6 W.

Set 12 gauge gun dbl.
 Fir 10" in dia. bears N 36° 50' E. .319 ch.
 Oak 12" " " " S. 64° L. .31 " 2nd.
 " 4" " " " N 50° W. .06 " "

Witnesses Carl & O.B. Ingram Aug. 22, 1918.

Corner to secs. 25, 26, 35 & 36 T. 13 S. R. 6 W.

Set $\frac{1}{2}$ of a wagon axle All oaks down but found 1 stake & 2 small holes
 Fir 8" in dia. bears N 14° 15' E. .868 ch.
 " 20" " " " S. 56° 30' E. .356 " "
 " 18" " " " S. 42° W. .283 " "
 " 10" " " " N 32° 30' W. 1.313 "

Witnesses O.B. Ingram & R.L. Clark Aug. 22, 1918.

C.S. Road
n.e. corner

Interior Corner of Isaac Miller D.L.C. # 52 T. 11-6.

Set wagon thimble N.E. oak down & gone
 W. fir 11" in dia. bears S 60° E. .039 ch.
 Oak 24" " " " N. 56° W. 1.39 " std.
 Witness James M. Taylor Sept. 12, 1918.

C.S. # 240 cont.
n.e. corner

Corner to secs. 22, 23, 26 & 27 T. 11 S. R. 7 W.

Set a 1 1/4" x 10" pipe N.E. & S.W. lines down.
 Fir 5" in dia. bears N. 79° 50' E. .170 ch.
 15" " " " S. 42° E. .238 " std.
 26" " " " N. 77° 15' W. .398 " "
 40" " " " N. 15° W. .631 " "

Witnesses Ray, I. d. L. & Rawley Davi Sept 30, 1918.

C.S. 265 cont.
n.e. corner

1/4 sec. cor. between secs. 21 & 22 T. 11 S. R. 7 W.

Set $\frac{3}{8}$ " x 2 1/2" x 24" bar of iron
 No tree near set from
 1st stump witness tree which is nearly one. Found 15 F on stump.
 Witnesses Edgar & Walter Munkit and James & Lude Blodgett
 Oct. 1, 1918.

1/4 sec. cor. between secs. 21 & 22

Set 3/8" x 2 1/2" x 24" iron bar. Found hole.
 Fir 15" in dia. bears S 77° E. 1.34 ch. 1st.
 20" " " " S 3° W. 4.21 " " 2nd
 2" " " " S. 51° W. .057 "

Corner to sections 25, 26, 35 and 36, Twp. 13 S. R. 6 W.

1911

Reestablishment by W. C. Galloway

August 22, 1918

Set $\frac{1}{2}$ of a wagon axle. All oaks down, but found 1 stake and 2 stake holes.

Fir 8" in diam bears N 24° 15' E	.868 chains
Fir 20" in diam bears S 56° 30' E	.356 chains
Fir 18" in diam bears S 42' W	.283 chains
Fir 10" in diam bears N 32° 30' W	1.313 chains

Witnesses O. B. Ingram and R. C. Clark

136600200

1912 2296

CORNER TO SECTIONS 25, 26, 35, AND 36, T 13 S. R 6 W W. M.

FIR	10"	DIA,	N 32° 30' W,	1.313	CHS,	(86.66')	IN
FIR	8"	DIA,	N 24° 15' E,	.868	CHS,	(57.29')	GONE
FIR	20"	DIA,	S 56° 30' E,	.356	CHS,	(23.50')	STUMP
FIR	18"	DIA,	S 42° 00' W,	.283	CHS,	(18.68')	FALLEN

SET TRUCK AXLE WITH 6" FLANGE AT CORNER

NEW B. TS. MARKED

FIR	12"	DIA,	N 87° 00' E,	16.3'	MARKED	CS BT
FIR	8"	DIA,	S 59° 00' W,	32.9'	MARKED	CS PT
W. OAK	6"	DIA,	S 51° 00' E,	16.8'	MARKED	CS BT

WITNESSES:

DONALD R. OAKES
WILLIAM F. TOMPKINS

APRIL 18, 1960



136600200

CORNER FILE TRACKING

H:\Survey\Corners\Misc\Filetrac2.doc
06/15/2003

CORNER NUMBER
136600200

STEP	HISTORY()	RESTORATION()
Form Prepared, DB	9/21/07	10/3/07
Field Inspection, DB	10/3/07	10/3/07
Form Checked, DB	10/5/07	10/5/07
Form Edited, DB	10/8/07	10/8/07
Form Signed, DB	10/8/07	10/8/07
Counter Index	10/3/07	10/3/07
GIS Index	10/3/07	10/3/07
Authorize Payment, DB	—	—
Archive Digital Files	10/8/07	10/8/07
Collect Documents	10/8/07	10/8/07
Scanned	10-9-07	10-9-07
Copy For Filming	10/8/07	10/8/07
Filed, DB		
Finish index (count unit)	10/3/07	10/3/07
Filmed (Archived), DB		
Document No's to Andrew		

(DB) = Entry needed in database (Access).

COMMENTS:

DATE 09/21/2007TOWNSHIP 13 SOUTH, RANGE 06 WEST, WILLAMETTE MERIDIAN; SECTION 25 CORNER SOUTHWEST
DONATION LAND CLAIM N/A CORNER N/A**COMMON CORNER(S):**SOUTHEAST OF SECTION 26
NORTHEAST OF SECTION 35
NORTHWEST OF SECTION 36**RECORDS (INFORMATION IN BOLD ITALICS IS COUNTY STAFFS' INTERPRETATION OF THE RECORD)**

BASED ON EXTENSIVE RESEARCH AND RECOVERY OF EVIDENCE, THIS OFFICE HAS DETERMINED THAT MOST GENERAL LAND OFFICE SURVEYORS MEASURED TO THE FACE OF BEARING TREES.

- [01] GENERAL LAND OFFICE (GLO) NOTES BY H GORDON, D S AND J PRESTON, D S , DATEC SEPTEMBER 7, 1854 SET A POST. MARKED A 14" W. OAK N10°E 165 LKS. (108.90 FT.), AN 8" W. OAK S44 1/2°E 94 LKS. (62.04 FT.), A 12" W. OAK S21 1/2°W 151 LKS. (99.66 FT.) AND A 6" W. OAK N16°W 145 LKS. (95.70 FT.).
- [02] COUNTY SURVEY NO 637 (OLD NO 190) FIELD NOTES (BOOK 26, PAGE 13) BY W C GALLOWAY, C S , DATED AUGUST 19, 1918 FOUND ALL OAKS DOWN. FOUND 1 STAKE AND 2 STAKE HOLES. SET 1/2 OF A WAGON AXLE. MARKED AN 8" FIR N24°15'E 0.868 CHS. (57.29 FT.), A 20" FIR S56°30'E 0.356 CHS. (23.50 FT.), AN 18" FIR S42°W 0.283 CHS. (18.68 FT.) AND A 10" FIR N32°30'W 1.313 CHS. (86.66 FT.).
- [03] CORNER RESTORATION BOOK NO 1, PAGE 136 BY W C GALLOWAY, C S , DATED AUGUST 22, 1918 FOUND ALL OAKS DOWN. FOUND 1 STAKE AND 2 STAKE HOLES. SET 1/2 OF A WAGON AXLE. MARKED AN 8" FIR N24°15'E 0.868 CHS. (57.29 FT.), A 20" FIR S56°30'E 0.356 CHS. (23.50 FT.), AN 18" FIR S42°W 0.283 CHS. (18.68 FT.) AND A 10" FIR N32°30'W 1.313 CHS. (86.66 FT.)
- [04] CORNER RESTORATION NO 1911 TRANSCRIBED FROM RECORD [03] AND MAY CONTAIN ERRORS AND/OR OMISSIONS.
- [05] BENTON COUNTY MAP NO 13-6-00017 BY W C GALLOWAY, C S , DATED SEPTEMBER 28, 1916 1/2 OF A WAGON AXLE. 8" FIR N24°15'E 0.868 CHS. (57.29 FT.). 20" FIR S56°30'E 0.356 CHS. (23.50 FT.). 18" FIR S42°W 0.283 CHS. (18.68 FT.). 10" FIR N32°30'W 1.313 CHS. (86.66 FT.).
- [06] CORNER RESTORATION NO 1912 BY R W HUTCHISON, R E , DATED APRIL 18, 1960 SET A TRUCK AXLE WITH 6" FLANGE. FOUND A 20" FIR STUMP (CSBT) S56°30'E 0.356 CHS. (23.50 FT.), AN 18" FIR (CSBT) S42°W 0.283 CHS. (18.68 FT.), FALLEN AND A 10" FIR (CSBT) N32°30'W 1.313 CHS. (86.66 FT.). MARKED A 6" W. OAK S51°E 16.80 FT., MARKED "CSBT", AN 8" FIR S59°W 32.90 FT., MARKED "CSBT" AND A 12" FIR N87°E 16.30 FT., MARKED "CSBT"
- [07] BUREAU OF LAND MANAGEMENT (BLM) NOTES BY F TUERS, CADASTRAL SURVEYOR AND R AARSETH, CADASTRAL SURVEYOR, DATED SEPTEMBER 1, 1983 FOUND A 1" IRON AXLE WITH A 6" FLANGE. FOUND A DECAYED FIR (CSBT), SIZE INDETERMINATE, N24 1/2°E 87 LKS. (57.42 FT.), A DECAYED 24" FIR STUMP (CSBT) S56°E 36 1/2 CHS. (24.09 FT.), WITH SCRIBE MARKS "BT" VISIBLE ON DECAYED BLAZE, A ROOT HOLE S42°W 28 1/2 LKS. (18.81 FT.), WITH A DECAYED 20" FIR (CSBT) ALONGSIDE, NO MARKS VISIBLE ON DECAYED BLAZE, A 35" FIR (CSBT) N32°W 131 1/2 LKS. (86.79 FT.), A 22" FIR N89 1/2°E 25 1/2 LKS. (16.83 FT.), WITH HEALED BLAZE, A 6" OAK S49 3/4°E 26 LKS. (17.16 FT.), WITH SCRIBE MARKS "CSBT" VISIBLE ON PARTIALLY HEALED BLAZE AND A 21" FIR S59 3/4°W 50 LKS. (33.00 FT.), WITH HEALED BLAZE.
- [08] COUNTY SURVEY NO 8848 BY NORMAN SPRINGER, P L S , DATED JUNE 16, 1994 FOUND A 1" IRON ROD (AXLE) WITH 6" FLANGE ON TOP, 0.2' ABOVE GROUND.

COMMENTS/LOCATION/ETC:**NOTES:**

THIS IS A MICROSOFT WORD 2000 DOCUMENT NAMED "36600200" CREATED FROM A BOILER PLATE DOCUMENT NAMED "HISTORY", WHICH HAS A STYLESHEET NAMED "CORNER" ATTACHED TO IT

FIRM/AGENCY: BENTON COUNTY SURVEYOR'S OFFICE
ADDRESS: 360 S W AVERY AVE CORVALLIS OR 97333, PH 766-6821
RESEARCH BY: BERNARD S ALTENBACH, ENGINEER/SURVEY TECH
DATA ENTRY BY: SAME

BENTON COUNTY CORNER RESTORATION FORM, PAGE 1 OF 2, 136600200R2**SEE CORNER HISTORY FORM FOR RECORDS ETC.**

CORNER RESTORATION FIELD BOOK NUMBER 26 PAGE(S) 03 DATE 10/03/2007
TOWNSHIP 13 SOUTH, RANGE 6 WEST, WILLAMETTE MERIDIAN; SECTION 25 CORNER SOUTHWEST
DONATION LAND CLAIM NONE CORNER N/A
CONDITION REPORT ; REFERENCED OUT ; RENEWED XX; SURVEYED IN

LOCATION AND COMMENTS:

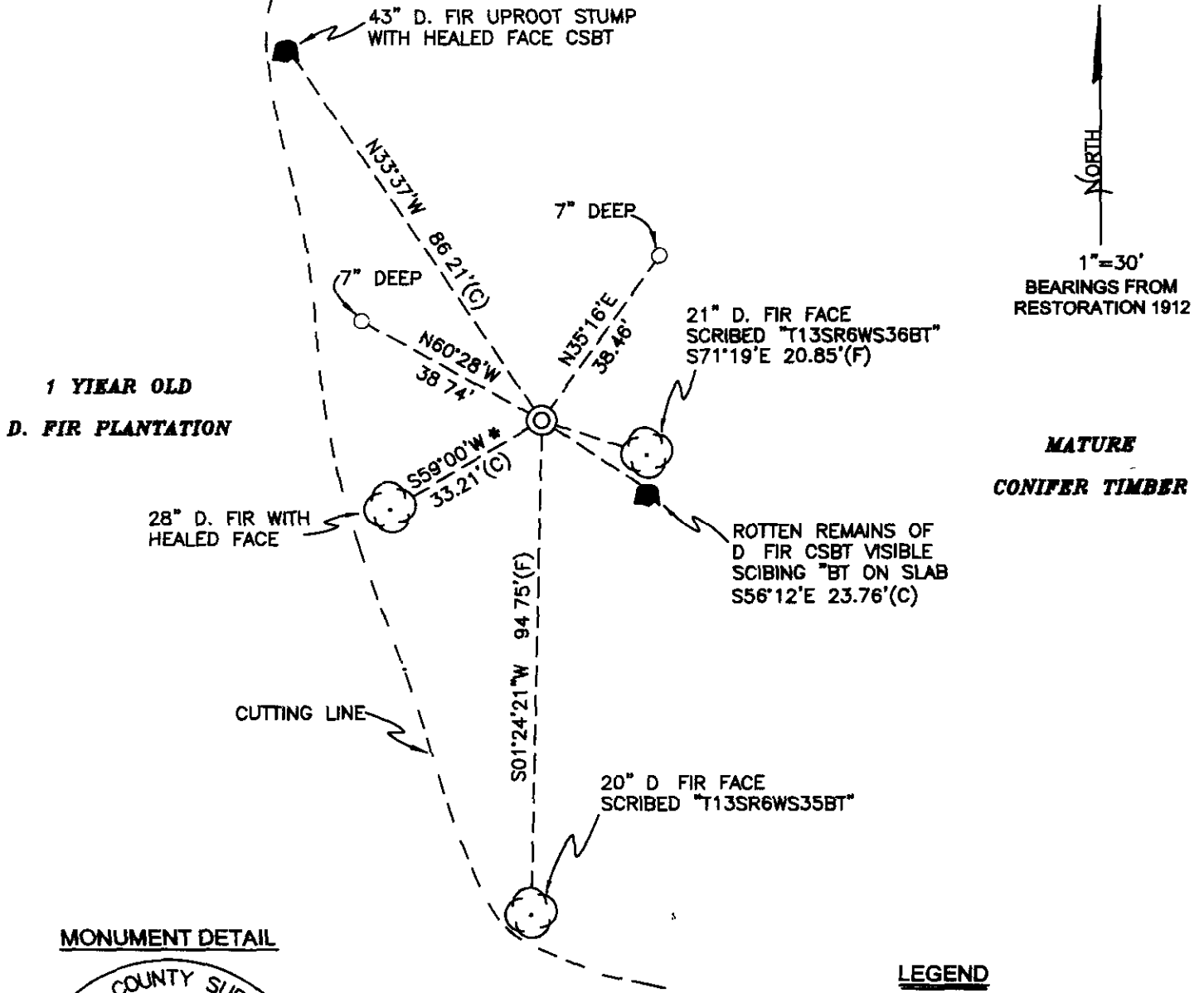
CORNER IS LOCATED ON A GENTLE SOUTH FACING SLOPE WITH A 1 YEAR OLD D FIR PLANTATION TO THE SOUTH AND STANDING TIMBER TO THE NORTH TO REACH CORNER FROM BELLFOUNTAIN AND HULL PL ROADS, TRAVEL SOUTHERLY ON BELLFOUNTAIN ROAD FOR 1.75 MILES, THEN RIGHT ON GRAVEL ROAD (PASSING THROUGH LOCKED GATE) FOR 0.02 MILES, THEN RIGHT ON GRAVEL SPUR FOR 1.45 MILES, THEN RIGHT ON RIDGE SPUR FOR 0.09 MILES AND PARK, THEN WALK SOUTHEASTERLY FOR ±7 CHAINS TO CORNER. CORNER MAY BE OKAY FOR PREMARKING FOR A FEW YEARS, BUT POOR FOR GPS CONTROL.

MONUMENTS AND ACCESSORIES FOUND (CONDITION AND SOURCE):

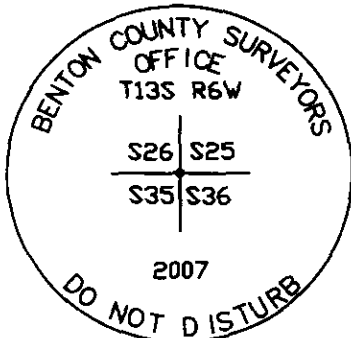
- 1 FOUND 1 3/4" AXLE WITH A 6 1/4" DIAMETER FLANGE ON TOP, 1" BELOW GROUND LEVEL FOR CORNER POSITION. AXLE WAS FOUND IN A PLUMB POSITION AND FIRMLY SET.
(SET POST PER RECORD [01])
(SET 1/2 OF WAGON AXLE FROM DOWN GLO BEARING TREES PER RECORDS [02] AND [03])
(1/2 OF A WAGON AXLE PER RECORD [05])
(SET A TRUCK AXLE WITH 6" FLANGE FROM COUNTY SURVEYOR'S BEARING TREES PER RECORD [06])
(FOUND 1" IRON AXLE WITH A 6" FLANGE PER RECORD [07])
(FOUND 1" IRON ROD AXLE WITH 6" FLANGE ON TOP, 0.2' ABOVE GROUND PER RECORD [08])
- 2 FOUND ROTTEN REMAINS OF D FIR STUMP OF UNDETERMINED SIZE, S56°12'E, 23.76 FEET TO APPROXIMATE CENTER OF REMAINS. FOUND 8" X 26" D FIR SLAB WITH VISIBLE SCRIBING "BT", LAYING ON WESTERLY SIDE OF STUMP REMAINS.
(MARKED A 20" FIR, S56°30'E, 23.50 FEET PER RECORDS [02] AND [03])
(20" FIR, S56°30'E, 23.50 FEET PER RECORD [05])
(FOUND 20" FIR STUMP, S56°30'E, 23.50 FEET PER RECORD [06])
(FOUND A DECAYED 25" FIR STUMP, S56°E, 24.09 FEET WITH SCRIBE MARKS "BT" ON DECAYED BLAZE PER RECORD [07])
- 3 FOUND 43" PARTIALLY UPROOTED D FIR STUMP WITH HEALED BLAZE, N33°37'W, 86.21 FEET TO CENTER. SET ALUMINUM NAIL AND PLASTIC WASHER IN TOP CENTER OF STUMP FOR DISTANCE AND ANGLE MEASUREMENT.
(MARKED A 10" FIR, N32°30'W, 86.66 FEET PER RECORDS [02] AND [03])
(10" FIR, N32°30'W, 86.66 FEET PER RECORD [05])
(FOUND 10" FIR, N32°30'W, 86.66 FEET PER RECORD [06])
(FOUND 35" FIR, N32°W, 86.79 FEET PER RECORD [07])
- 4 FOUND 28" D FIR WITH HEALED BLAZE, S59°00'W, 33.21 FEET TO CENTER. SET ALUMINUM NAIL AND PLASTIC WASHER IN SOUTHEAST BASE FOR DISTANCE MEASUREMENT. **BASIS OF BEARINGS FOR THIS RESTORATION.**
(8" FIR, S59°W, 32.90 FEET, MARKED "CSBT" PER RECORD [06])
(FOUND A 21" FIR, S59 3/4°W, 33.00 FEET WITH HEALED BLAZE PER RECORD [07])

MONUMENT SET (PROCEDURES AND DESCRIPTION):

ALL ORIGINAL GLO BEARING TREES AND CORNER POST ARE NOW MISSING. THE MONUMENT (1/2 OF A WAGON AXLE) SET PER RECORD [02] IS MISSING ALSO. WE HELD THE CENTER OF THE AXLE AS SET IN RECORD [06] FOR THE TRUE CORNER POSITION, WHICH COMPARES WELL WITH THE ABOVE FOUND ACCESSORIES. REMOVED AXLE AND SET A 2" X 31 1/2" GALVANIZED IRON PIPE WITH A 3 1/4" BRASS DISK CONCRETED IN THE TOP, 4" BELOW GROUND LEVEL AND MARKED AS SHOWN ON PAGE 2 OF 2. BURIED THE 1 3/4" X 22" AXLE ON THE SOUTHERLY SIDE OF NEW MONUMENT AND 6" BELOW GROUND LEVEL. SET A 6 FOOT ORANGE CARSONITE "SURVEY MARKER" POST 0.5 FEET NORTH OF NEW MONUMENT.



MONUMENT DETAIL



3 1/4" BRASS DISK

LEGEND

- SET 5/8" X 30" REBAR WITH YELLOW PLASTIC CAP MKD "BENTON COUNTY SURVEYOR"
- (F) MEASUREMENT TO FACE
- (C) MEASUREMENT TO CENTER
- ⊙ GOVERNMENT MONUMENT SET AS SHOWN
- ⊙ BEARING TREE AS NOTED
- C.S.B.T. COUNTY SURVEYORS BEARING TREE
- CR CORNER RESTORATION
- ⊙ BEARING TREE STUMP AS NOTED
- * BASIS OF BEARINGS

NEW ACCESSORIES

- 1 SET REBAR (SEE LEGEND) 7" BELOW GROUND LEVEL N35°16'E, 38.46 FEET.
- 2 SET REBAR (SEE LEGEND) 7" BELOW GROUND LEVEL N60°28'W, 38.74 FEET.
- 3 21" D. FIR FACE SCRIBED "T13SR6WS36BT" S71°19'E, 20.85 FEET TO FACE. SET ALUMUNUM NAIL AND PLASTIC WASHER BELOW SCRIBING FOR DISTANCE AND ANGLE MEASUREMENT.
- 4 20" D. FIR FACE SCRIBED "T13SR6WS35BT" S01°24'21"W, 94.75 FEET TO FACE. SET ALUMINUM NAIL AND PLASTIC WASHER BELOW SCRIBING FOR DISTANCE AND ANGLE MEASUREMENT.

NOTES

COMPASS DECLINATION IS 20° EAST. ALL MEASURED DISTANCES AND BEARINGS ARE TO THE CENTER OF THE OBJECT, UNLESS OTHERWISE NOTED. ALL BEARING TREES ARE PAINTED AND HAVE A B.T. TAG ATTACHED, FACING THE CORNER UNLESS OTHERWISE NOTED. ALL NEW BEARING TREES HAVE A PLASTIC WASHER (STAMPED "BENTON COUNTY SURVEYOR CORNER RESTORATION") ATTACHED (BY ALUMINUM NAIL) TO THE FACE, BELOW THE "BT" FOR DISTANCE AND ANGLE MEASUREMENT UNLESS OTHERWISE NOTED. THE DRAWING IS FROM AUTOCAD RELEASE 2006.

THIS RESTORATION WAS PERFORMED AT THE DIRECTION AND APPROVAL OF THE BENTON COUNTY SURVEYOR, MD

REGISTERED PROFESSIONAL LAND SURVEYOR

10/8/07 *David M. Dean*

OREGON
JULY 13, 1984
DAVID M. DEAN
2090

RENEWAL DATE: 12/31/07

FIRM/AGENCY: BENTON COUNTY SURVEYOR'S OFFICE
ADDRESS: 360 S.W. AVERY AVE. CORVALLIS OR 97333; PH. 766-6821
PRESENT: DAVID M. DEAN, P.L.S. AND BERNIE ALTENBACH, SURVEY TECH.
EQUIPMENT: LEICA TCR 1105 WITH TDS ON BOARD

C. S. 190
Continued

1/4 sec cor between secs 35 & 36 T 13 S R 6 W
 Set 3/4" x 24" bolt & glass 160 oak stake near
 Oak 12" in dia bears N 31° E .54 old head
 Fir 24" " " S 66° W 91
 " 11" " " N 32° W .180 chs

Witnesses Alex Le Vaughn, Carl Ingram & O.B. Ingram Aug 20, 1918

1/4 sec cor between secs 24 & 35 T 13 S R 6 W

Set 12 gauge gun bbl
 Fir 10 in dia bears N 36° 30' E 319 chs
 Oak 12' " " S 64° E .31 " std
 " 4' " " N 50° W 06 " "

Witnesses Carl & O.B. Ingram Aug 22, 1918

Corner to secs 25, 26, 35 & 36 T. 13 S R 6 W.

Set 1/2 of a wagon axle All oaks down but found 1 stake & 2 stake holes
 Fir 5" in dia bears N 24° 15' E. 868 chs
 " 20" " " S. 56° 30' E 356 "
 " 18" " " S 42° W. 283 "
 " 10" " " N 32° 30' W 1313 "

Witnesses O.B. Ingram & R.C. Clark Aug 22, 1918

C.S. #240

Interior Corner of Isaac Miller D.L.C. # 52 T. 11-6

Set wagon thimble N.E oak down gone
 W fir 11" in dia bears S 60° E. 039 chs
 Oak 24" " " " N 56° W 139 " std

Witness James M Taylor Sept 12, 1918

C.S. #240 cont
W.C. Railway

Corner to secs 22, 23, 26 & 27 T 11 S R 7 W

Set a 1 1/4" x 19" pipe NE & SW trees down
 Fir 3 in dia bears N 79° 50' E. 170 chs
 15' " " S 48° E 238 " std
 26' " " N 77° 15' W 398 "
 " 40' " " N 15° W 63' " "

Witnesses Ray, Ed. L & Rawley Davis Sept 30, 1918

C.S. #265 cont
W.C. Railway

1/4 sec cor between secs 22 & 23 T. 11 S R 7 W

Set 3/8" x 2 1/2" x 24" bar of iron
 No tree near set from
 Fir stump witness tree which is nearly gone found BT on stump
 Witnesses Edgar & Victor Plunket and James & Clyde Blodgett
 Oct 1, 1918

1/4 sec cor between secs 21 & 22 T. 11 S R 7 W

Set 3/8" x 2 1/2" x 24" iron bar Found hole
 Fir 15" in dia bears S 77° E 134 chs std
 20" " " S 3° W 421 " " head
 " 2" " " S 51° W .057 "

Witnesses Edgar & Victor Plunket Oct 3, 1918

Corner to sections 25, 26, 35 and 36, Twp. 13 S. R. 6 W.

1911

Reestablishment by W. C. Galloway

August 22, 1918

Set $\frac{1}{2}$ of a wagon axle. All oaks down, but found 1 stake and 2 stake holes.

Fir 8" in diam bears N 24° 15' E	.868 chains
Fir 20" in diam bears S 56° 30' E	.356 chains
Fir 18" in diam bears S 42' W	.283 chains
Fir 10" in diam bears N 32° 30' W	1.313 chains

Witnesses O. B. Ingram and R. C. Clark

1912 221

CORNER TO SECTIONS 25, 26, 35, AND 36, T 13 S. R 6 W. N.

FIR	10"	DIA,	N 32° 30' W,	1.513	CHS,	(86.66')	IN
FIR	8"	DIA,	N 24° 15' E,	.868	CHS,	(57.29')	COME
FIR	20"	DIA,	S 56° 30' E,	.356	CHS,	(23.50')	STUMP
FIR	18"	DIA,	S 42° 00' W,	.283	CHS,	(18.68')	FALLEN

SET TRUCK AXLE WITH 6" FLANGE AT CORNER

NEW B. TS. MARKED

FIR	12"	DIA,	N 87° 00' E,	16.3'	MARKED	CS	BT
FIR	8"	DIA,	S 59° 00' W,	32.9'	MARKED	CS	PT
W. OAK	6"	DIA,	S 51° 00' E,	16.8'	MARKED	CS	BT

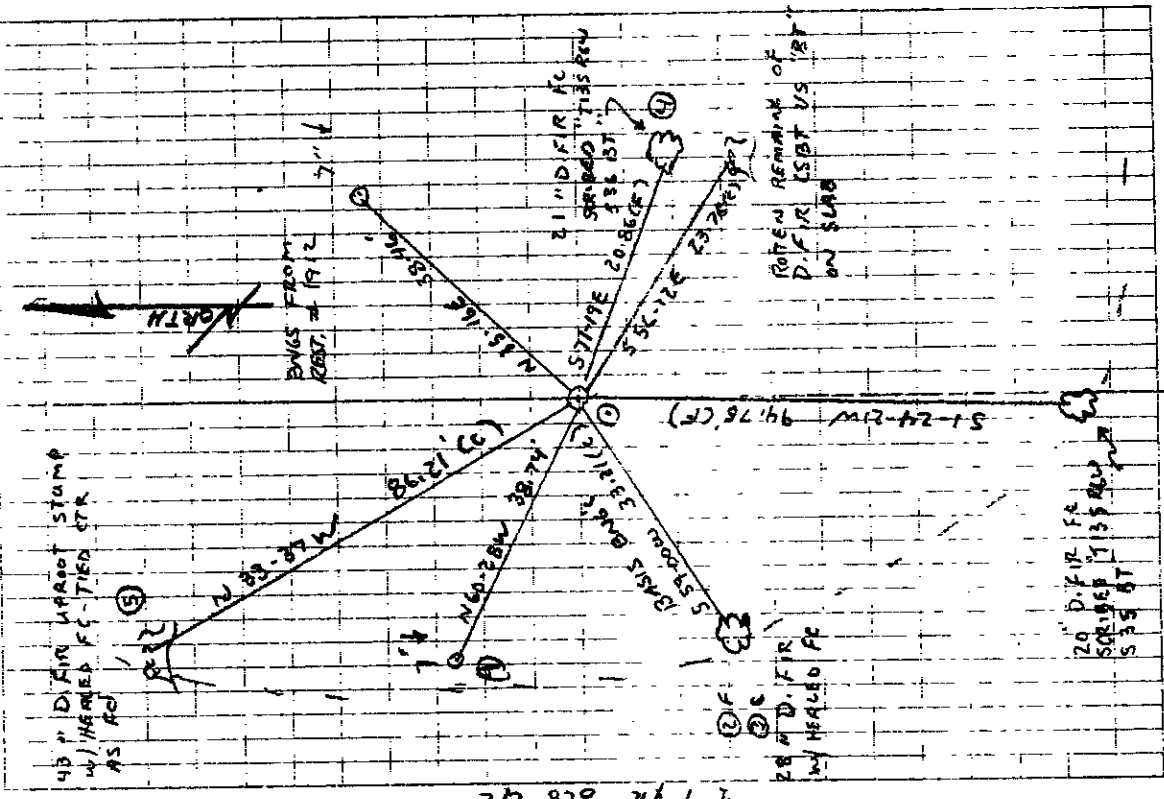
WITNESSES:

DONALD R. OAKES
WILLIAM F. TOMPKINS

APRIL 18, 1960



CEDY, Cool
 48" F, 29.5" H⁷
 LEICA TCR HO5/TDS
 10/3/07 26/3
 D DEAN
 B RUTENBACH



1 1 R 0 0 c/c

13660200
 26125
 35136
 7 135 R6W
 REMONUMENTING
 30"
 FD 1 3/4" O.D. AXLE w/ 6" FLANGE ON
 TOP 1" ↓ FOR COR. POSITION AXLE
 FD PLUMB AND FIRMLY SET.
 ALL 630 BT'S ARE NOW MISSING
 FD G.S.B.T. BY W.C.G. 1) ROTTEN REMAINS
 OF SE BT w/ VS. "BT" ON SLAB LYING HORZ.
 2) 43" Ø FIR STUMP UPROOT w/ HEALED
 BLAZE. FD 1 PAC. [OG] BT, 28" D. FIR
 w/ HEALED BLAZE (SS9W, 328)
 REMOVED AXLE AND SET 2" 3/16" GIP w/ 3/4"
 BRASS DISK CONCL. IN TOP 4" ↓ AND
 MKD. AS SHOWN. BURIED AXLE ON S
 SIDE NEW MON IN HORZ POSITION 6" ↓
 SET 6' ORANGE CARBONITE "SURVEY
 MARKER" POST 0 5 NORTH

T 135 R6W	
526	525
535	536
2007	

3/4 BRASS DISK