

CORNER FILE TRACKING

H:\Survey\Corners\Misc\Filetrac.doc

11/23/98

CORNER NUMBER
136600440

STEP	HISTORY()	RESTORATION()
Form Prepared, DB	✓ 7/22/04	8/9/04
Field Inspection, DB	✓ 8/3/04	8/3/04
Form Checked, DB	✓ 8/27/04	8/27/04
Form Edited, DB	✓ 8/27/04	8/27/04
Form Signed, DB	✓ 9/3/04	9/3/04
GIS Index	✓ 8/9/04	8/9/04
Authorize Payment, DB	✓	—
Archive Digital Files	✓ 9/3/04	9/3/04
Collect Documents	✓ 9/3/04	9/3/04
Scanned	9/7/04	9/7/04
Copy For Filming	9/3/04	9/3/04
Filed, DB		
Finish index (count unit)	8/3/04	8/3/04
Filmed (Archived), DB		

(DB) = Entry needed in database (Access).

COMMENTS:

DATE 07/22/2004

TOWNSHIP 13 SOUTH, RANGE 6 WEST, WILLAMETTE MERIDIAN; SECTION 13 CORNER W 1/4
DONATION LAND CLAIM NONE CORNER N/A**COMMON CORNER(S):**

EAST 1/4 SECTION 14

RECORDS (INFORMATION IN BOLD ITALICS IS COUNTY STAFFS' INTERPRETATION OF THE RECORD)

BASED ON EXTENSIVE RESEARCH AND RECOVERY OF EVIDENCE, THIS OFFICE HAS DETERMINED THAT MOST GENERAL LAND OFFICE SURVEYORS MEASURED TO THE FACE OF BEARING TREES.

- [01] GENERAL LAND OFFICE (GLO) NOTES BY HARVEY GORDON, D.C.S., DATED AUGUST 23, 1854. *SET QUARTER SECTION POST FROM WHICH AN ALDER 15" DIA. BEARS S32°E, 53 LKS (34.98 FEET). AN ASH 20" DIA. BEARS S80°W, 23 LKS (15.18 FEET).*
- [02] COUNTY SURVEY NO. 447 (OLD NO. 208), NOTES (FIELD BOOK NO 17 PG 23-28), BY BURT WILKES, D.C.S., DATED MAY 12 1914. *SET 2 1/4" X 47" IRON PIPE FOUND (GLO) ASH BT, S80°W, .23 CHS (15.18 FEET). MARK FIR 14" DIA. S86 1/2°W, .34 CHS (22.44 FEET).*
- [03] CORNER RESTORATION BOOK NO. 1 PG 79, BY W.C. GALLOWAY, C.S., DATED MAY 12, 1914. *1/4 SEC. COR. BETWEEN SECTIONS 13 AND 14, SET 2 1/4" IRON BOILER TUBE FROM WHICH AN ASH 20" DIA. S80°W .23 CHS (15.18 FEET), NEARLY READY TO CAVE INTO CREEK. MARK FIR 14" DIA. N89°30'W, 1.88 CHS (124.08 FEET).*
- [04] CORNER RESTORATION NO. 1879. *THIS IS TRANSCRIBED FROM RECORD NO. [03] AND MAY CONTAIN ERRORS AND/OR OMISSIONS.*
- [05] BENTON COUNTY MAP NO 13-6-00011 BY BURT WILKES, D.C.S., DATED MAY 12-21, 1914. *1/4 SEC. CORNER, 2 1/4" IRON PIPE FIR 14" DIA. N89°30'W, 1.88 CHS (124.08 FEET).*
- [06] BENTON COUNTY MAP NO. 13-6-00010 BY BURT WILKES, D.C.S., DATED AUGUST 16, 1916. *1/4 CORNER 2 1/4" PIPE.*
- [07] COUNTY SURVEY NO. 5538, BY FRED L. LEMKE, P.L.S., DATED JULY 11, 1973. *FOUND 2 1/2" PIPE 1/4 SECTION COR. EAST LINE SEC. 14.*

NOTES:

THIS IS A MICROSOFT WORD 2000 DOCUMENT NAMED "36600440" CREATED FROM A BOILER PLATE DOCUMENT NAMED "HISTORY" WHICH HAS A STYLESHEET NAMED "CORNER" ATTACHED TO IT.

FIRM/AGENCY: BENTON COUNTY SURVEYOR'S OFFICE**ADDRESS:** 360 S.W. AVERY AVE. CORVALLIS OR 97333; PH. 766-6821**RESEARCH BY:** DAVID M. DEAN, P.L.S.**DATA ENTRY BY:** ADAM CASALEGNO, SURVEY TECH.

BENTON COUNTY CORNER RESTORATION FORM, PAGE 1 OF 2, 136600440R2

SEE CORNER HISTORY FORM FOR RECORDS ETC.

CORNER RESTORATION FIELD BOOK NUMBER 22 PAGE(S) 40

DATE 08/03/2004

TOWNSHIP 13 SOUTH, RANGE 6 WEST, WILLAMETTE MERIDIAN; SECTION 13 CORNER WEST 1/4

DONATION LAND CLAIM NONE CORNER N/A

CONDITION REPORT _____; REFERENCED OUT _____; RENEWED XX; SURVEYED IN _____

LOCATION AND COMMENTS:

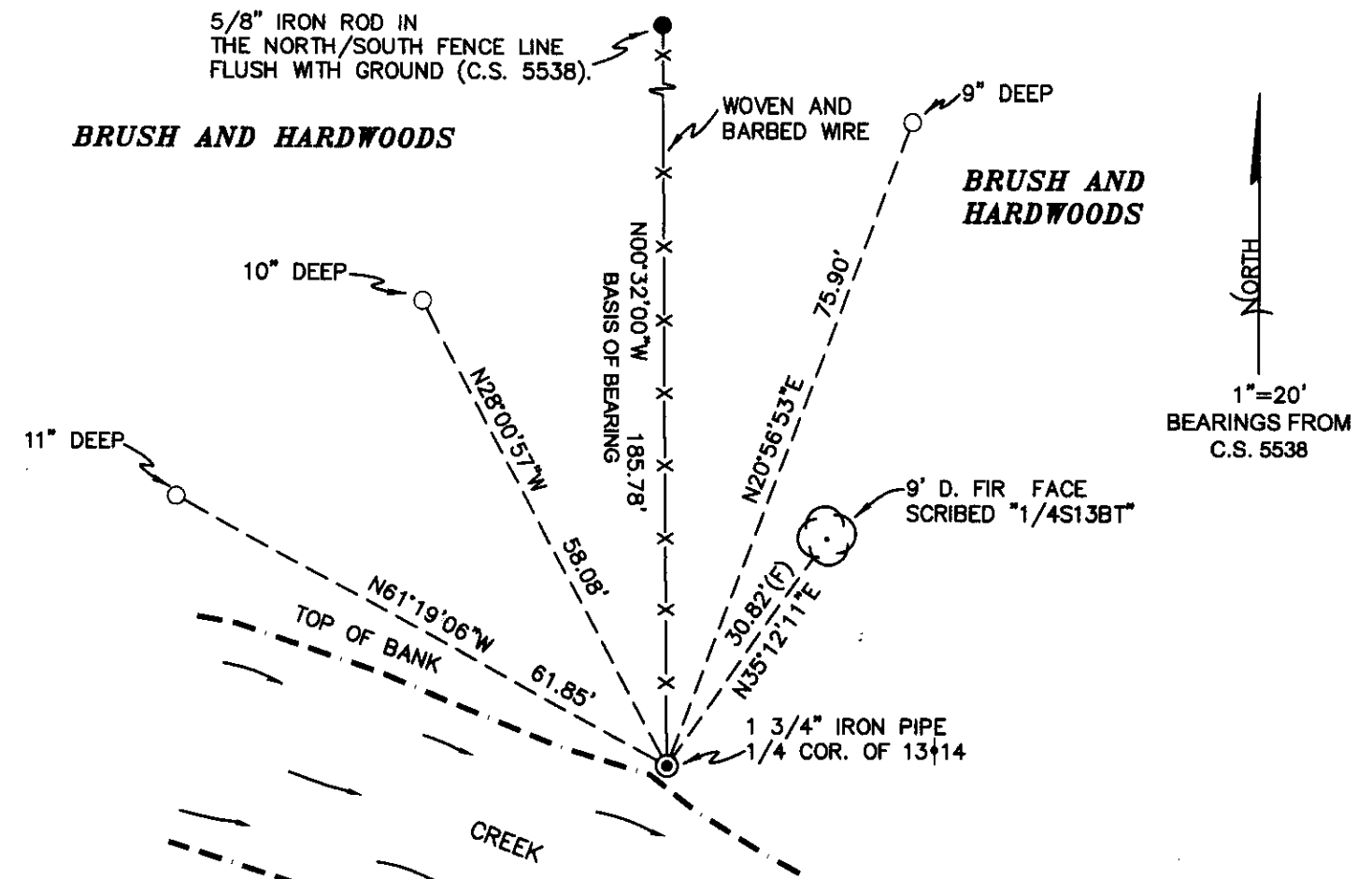
CORNER IS LOCATED IN A NORTH/SOUTH WOVEN AND BARBED WIRE FENCE IN AN AREA OF HARDWOODS, CONIFER AND BRUSH, ON THE NORTH BANK OF A CREEK BEARING SOUTHEASTERLY. TO REACH CORNER FROM THE JUNCTION OF BELLFOUNTAIN ROAD AND STARR CREEK ROAD, TRAVEL WESTERLY ON STARR CREEK ROAD FOR 2.12 MILES TO A GRAVEL SPUR ON THE LEFT (SOUTH); THEN WALK NORTH ALONG FENCE LINE FOR 300 FEET TO CORNER. CORNER IS POOR FOR PREMARKING AND GPS CONTROL.

MONUMENTS AND ACCESSORIES FOUND (CONDITION AND SOURCE):

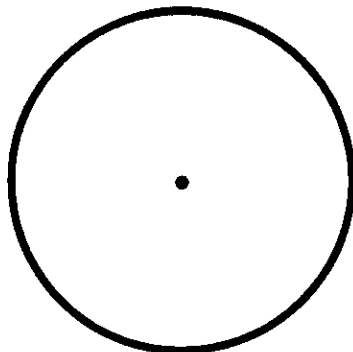
1. FOUND 2 1/4" IRON PIPE ON THE NORTH BANK OF A CREEK BEARING SOUTHEASTERLY FOR CORNER POSITION.
(SET 2 1/4" X 47" IRON PIPE PER RECORD [02]).
(SET 2 1/4" IRON BOILER TUBE PER RECORD [03]).
(FOUND 2 1/4" PIPE PER RECORDS [05] AND [06]).
(FOUND 2 1/2" PIPE PER RECORD [07]).
2. FOUND 5/8" IRON ROD IN NORTH-SOUTH FENCE LINE, FLUSH WITH GROUND, N00°32'00"W, 185.78 FEET.
(SET 5/8" IRON ROD IN BAR HOLE, N00°32'W, 185.59 FEET PER RECORD [07]).

MONUMENT SET (PROCEDURES AND DESCRIPTION):

NO EVIDENCE OF GLO OR COUNTY SURVEYOR'S ACCESSORIES COULD BE FOUND. HELD THE 2 1/4" IRON PIPE AS SET PER RECORD [02] FOR TRUE CORNER POSITION. NO NEW CORNER MONUMENT WAS SET. IRON PIPE IS IN DANGER OF BEING DESTROYED BY CREEK EROSION IN THE NEXT FEW YEARS. THE PURPOSE OF THIS RESTORATION WAS TO PERPETUATE THE CORNER POSITION BY REFERENCING AS SHOWN ON PAGE 2 OF 2. SET 6 FOOT ORANGE CARSONITE "SURVEY MARKER" POST 0.5 FEET NORTH OF CORNER MONUMENT.



MONUMENT DETAIL



2 1/4" IRON PIPE

(NO NEW MONUMENT SET)

LEGEND

- SET 5/8" X 30" REBAR WITH YELLOW PLASTIC CAP MKD "BENTON COUNTY SURVEYOR"
- FOUND MONUMENT AS NOTED
- (F) MEASUREMENT TO FACE
- ⊙ GOVERNMENT MONUMENT FOUND AS SHOWN
- ⊙ BEARING TREE AS NOTED

NEW ACCESSORIES:

1. SET REBAR (SEE LEGEND) 11" BELOW GROUND LEVEL, N61°19'06"E, 61.85 FEET.
2. SET REBAR (SEE LEGEND) 10" BELOW GROUND LEVEL, N28°00'57"W, 58.08 FEET.
3. SET REBAR (SEE LEGEND) 9" BELOW GROUND LEVEL, N20°56'53"E, 75.90 FEET.
4. 9" D. FIR FACE SCRIBED "1/4S13BT", N35°12'11"E, 30.82 FEET TO FACE. SET ALUMINUM NAIL AND PLASTIC WASHER IN BOTTOM OF BLAZE FOR DISTANCE AND ANGLE MEASUREMENT.

NOTES:

COMPASS DECLINATION IS 20' EAST. ALL MEASURED DISTANCES AND BEARINGS ARE TO THE CENTER OF THE OBJECT, UNLESS OTHERWISE NOTED. ALL BEARING TREES ARE PAINTED AND HAVE A B.T. TAG ATTACHED, FACING THE CORNER UNLESS OTHERWISE NOTED. ALL NEW BEARING TREES HAVE A PLASTIC WASHER (STAMPED "BENTON COUNTY SURVEYOR CORNER RESTORATION") ATTACHED (BY ALUMINUM NAIL) TO THE FACE, BELOW THE "BT" FOR DISTANCE AND ANGLE MEASUREMENT UNLESS OTHERWISE NOTED. THE DRAWING IS FROM AUTOCAD RELEASE 2002.

THIS RESTORATION WAS PERFORMED AT THE DIRECTION AND APPROVAL OF THE BENTON COUNTY SURVEYOR, *DW*

FIRM/AGENCY: BENTON COUNTY SURVEYOR'S OFFICE
 ADDRESS: 360 S.W. AVERY AVE. CORVALLIS OR 97333; PH. 766-6821
 PRESENT: DAVID M. DEAN, P.L.S. AND ADAM CASALEGNO, SURVEY TECH.
 EQUIPMENT: LEICA TCR 1105 TOTAL STATION WITH TDS.

REGISTERED
 PROFESSIONAL
 LAND SURVEYOR

9/3/04 *David M. Dean*

OREGON
 JULY 13, 1984
 DAVID M. DEAN
 2090

RENEWAL DATE: 12/31/05

C.S. 208, Cont.

1/2" x 26" iron rod May 1935.
1/4 sec. cor. bet. secs. 22+23. Set yew post. All evidence of original cor gone
Set on true sec. line & equidistant from sec. cors.
Mark yew 5" S. 7 1/2° W. 476 - fir 28" S. 53 1/2° E. 820

Cor. of secs. 22, 23+24. Set fir limb, all original trees standing.
Fir 20" N. 68° E. 236, Fir 50, S. 38° W. 17, Fir 60" N. 70° W. 21, Fir 50" S. 47° E. 75

1/4 sec. cor. bet. secs. 15+22 - Set yew post from which
fir 8" S. 68° E. 41, Maple 10" N. 34° W. 16, std. fir chopped nearly down ^{for marks.}
Mark fir 10" S. 17 1/2° W. 440 -

1/4 sec. cor. bet. secs. 11+14. Set roadside of plow - 10" below surface
Old oak 24" - S. 41 1/2° E. ^{Not 43° E.} 754. other tree gone
Mark oak 6" N. 64 1/2° W. 815

1/4 sec. cor. bet. secs. 14+23. Set 1 1/2" iron pipe, nearly under large log
Orig. fir 60" N. 31° E. 38 - other tree gone
Mark fir 10" N. 38° W. 288.

1/4 sec. cor. bet. secs. 13+14. Set 2 1/2" x 47" iron boiler tube from which
Ash 20" S. 80° W. 23 Nearly ready to cave into creek.
Mark fir 14" N. 89° 30' W. 488

Cor. of secs 13, 14, 23+24. Set 1" iron pipe. from which
"fir 40" N. 64° E. 228"
"fir 4" N. 41° W. 88"
fir 36. S. 27° W. 230" is 2265
fir 24. S. 14° E. 234 is 1787 bearings Qr.
Witnesses to all cors. in survey #208 - Geo. W. Horner, F. A. Wilson,
Wm Webster Jos. Best.

C.S. 209

ARTHUR SKAGGS old
1917-1920
May 20 to June 7
7.10-7

1/4 sec. cor. bet. secs. 17+18. Set stone, 16" x 10" x 8" all original trees &
evidence obliterated. set on true sec. line & equidistant bet sec. cors.
Mark. fir 34" N. 42° W. 302

Cor. of secs. 17, 18, 19+20. Set fir limb, in old hole, found by digging
Mark Fir 24" N. 26 1/2° E. 314, Fir 20, N. 53° 50' W. 4672, Fir 5. S. 8° E. 1944

1/4 sec. cor. bet. secs. 19+20. Set cedar post from N.W. 81.
Mark. fir 24" S. 24 1/2° E. 1158, fir 14" S. 65 1/2° W. 1887

Cor. of secs. 7, 8, 17+18. Set Fir limb, ^{from W.B.T.} Mark
Mark Fir 30" N. 57° E. 133, Fir 26" N. 89° E. 879, fir 24" S. 4 1/2° W. 864
This cor was reestablished in C.S. # 148 but was out of position & changed
West 286 & S. 068, Notes on p. 90-33. This volume.

1/4 sec. cor. bet. secs. 17+20. Stone 6x6x12. Mark. Set by F.M.W.C.S. #40
This tree marked in 1917
Willow 12" S. 12° 55' W. 510, Apple 10" S. 81 1/2° E. 1972 marked in C.S. # 209.
It was to be reestablished in C.S. # 209. Arthur Skaggs Austin Skaggs

1/4-Section corner between sections 13 and 14, Twp. 13-6

1879

Reestablishment by W. C. Galloway

Date May 1914

Set 2 1/2" x 47" iron boiler tube

Ash 20" in diam bears S 80° W

ready to cave into creek)

Fir 14" in diam bears N 89° 30' W

.23 chains (nearly

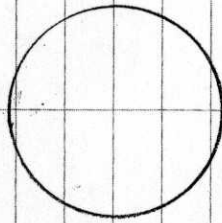
1.88 chains

(h)

2762

136 600440

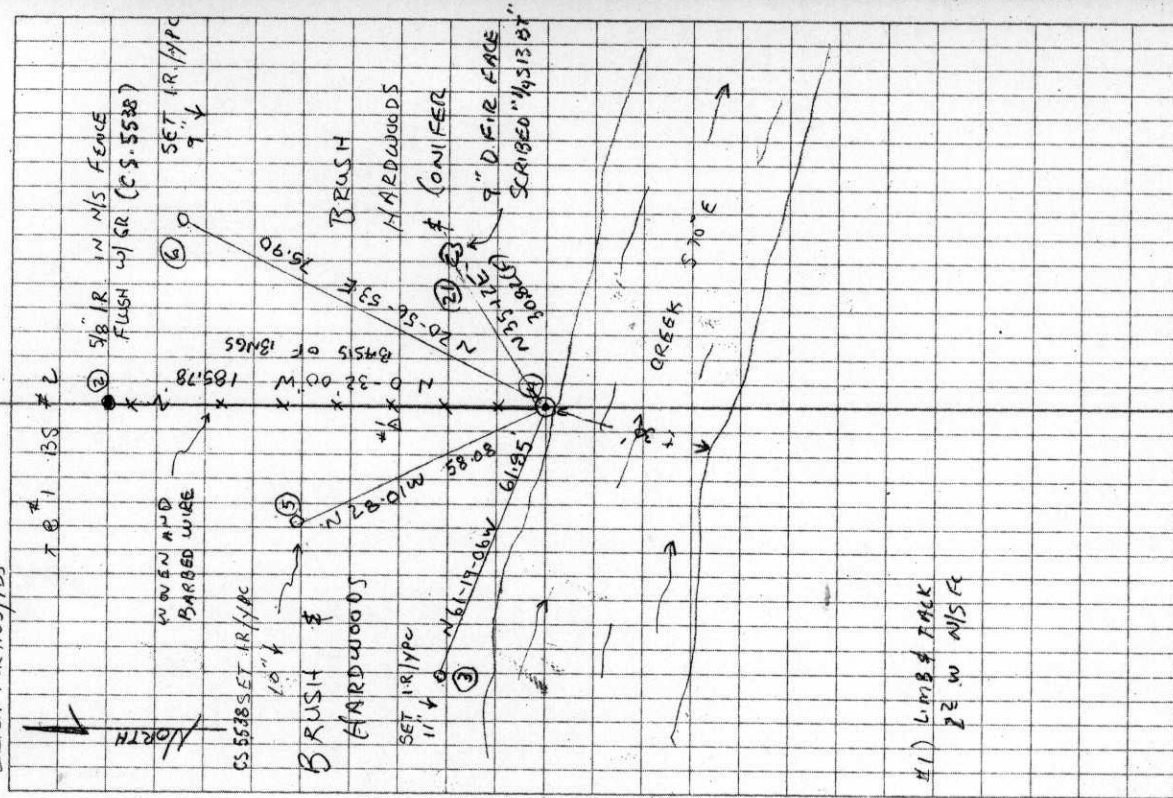
REFERENCING AND PERTAINING 1/4 14/13 T135 RW
 OF 2 1/4" RUSTY I.P. FLASH w/GROUND NORTH
 OF CREEK BANK. MONUMENT IN DANGER
 OF SOON BEING ERODED AWAY BY CREEK
 ACTION. NO EVIDENCE OF GLO OR COUNTY
 SURVEYOR'S BEARING TREES COULD BE FOUND
 HELD I.P. FOR TRUE COR POSITION AND
 REFERENCED AS SHOWN (NO NEW MONUMENT
 SET) SET 6' ORANGE CARBONITE "SURVEY
 MARKER" POST OF N OF 1 1/4" I.P.



2 1/4" IRON PIPE
 (NO NEW MON. SET)

8/3/04 22/40
 D. DEAN
 A. COSALEGNO

CLEAR, MILD
 70°F (A.M.)
 300" Hg
 LEICA TC1105/TDS



#1) LIMB & TACK
 22 W N151° E