

C.S. 299

1/4 sec. cor. bet. Secs. 30 & 31 T. 10 - 4

Set 3/4" iron with cog & planer blades ^{12" under} Set from Alder 10" S. 74° W. 3.300

Alder 12" in dia. bears S 82° W 3.600 cks. (In dump of alders)

Mile post 78 on W. side Highway N. 55° 36' E. 6.578 cks. ^{obtain} Bearing of monument N. 10° 04' E.

Witnesses Ed. Blake and G. E. Burge March 1925.

C.S. 29

W.C. Galloway C.S.

March 17, 1923.

Witness B. K. Taylor

N.W. corner of James Doggett Cl. 44 T. 13-6

Set 3/4" pipe, at junct. Oak 12" S. 22° W 3.21 top root

Oak 12" in dia. bears S. 25° E 3.70 cks. std.

Mkd. " 3" " " S. 59° 20' E. 2.29 "

Anchor post S 38° W. 0.44 "

S.W. cor. of Thos. H. Linville D.L.C. 47 T. 13-6

Set a gun barrel from old witness tree S.E.

Marked Oak 14" in dia. bears S. 88° 27' E. 1.566 cks.

S.E. cor. of Thos. H. Linville D.L.C. 47 T. 13-6

Set Stone 5" x 7" x 16"

Mkd. Oak 13" in dia. bears N 0° 17' W. 1.359 cks.

" " 8" " " S. 88° 30' W. 2.549 "

N.E. cor. of James Doggett D.L.C. 44 T. 13-6

Set 1 1/4" pipe w/ oak stake

Oak stump 18" S 55° E 13.46 orig. tree.

Mkd. " 15" in diameter S 52° 15' E. 3.188 at - 8° 45' = 3.151 cks.

" " 6" " S 32° 40' E. 3.028 at - 14° 15' = 2.935 "

Center of top of concrete reservoir 4.934 at - 15° 10' = 4.804 "

W. edge of post on N. of road 16' W. of school fence S. 6° 01' E.

S.E. corner of James Doggett D.L.C. 44 T. 13-6

Set 1 1/4" shaft, 3/8" bolt on top

Set 3/4" iron pin S 0° 18' E. 20 feet

" 5/8" " rod N. 0° 18' W. 20 "

Mkd. Oak 16" in dia. bears S. 18° 10' E. 1.271 cks.

S.W. corner of James Doggett D.L.C. 44 T. 13-6

Set a Quart bottle 12" under surface

Oak 8" in dia. bears N 29° 40' E. 4.48 cks. std. (Bearing from line)

1/4 Sec. cor. between sections 3 and 10 bears N. 5° 19' W. 8.269 cks.

Most N. N.W. cor. of Samuel Leneve D.L.C. 45 T. 13-6

Set 3/4" galv. pipe from Oak stump 24" S. 26° 26' E. 14.84 cks.

and stick at corner south 15.02 cks.

Anchor post 10" x 10" West .424 cks.

C.S. 77

N.W. corner of David Belcher D.L.C. #41 T. 14 S. R. 5 W.

Set a Stone 6" x 8" boulder on south side of corner post

No trees near.

Witness Watkins Nov. 6, 1910

1976

N. E. corner of James Dogett DLC 44, Twp. 13-6

Reestablishment by W. C. Galloway

March 17, 1923

Set 1 1/4" pipe W. of Oak stake

Oak stump 18" in diam bears S 55° E

13.46 chains(orig.tr

Oak 15" in diam bears S 52° 15' E

3.188 chains

Oak 6" in diam bears S 32° 40' E

3.028 chains

Center of top of concrete reservoir 4.934 chains at 13° 10' 4.80

W. edge of post on N. of road 16' W of school fence S 0° 01' E.

Witness Byron K. Taylor

T 135 R 6 W SEC. 2 NE. COR. JAMES S. DOGGETT D.L.C. 44

FND. 1 1/4" I.D. I.P. 0.5' ABOVE SURFACE FOR THE CORNER
(COR. REST. NO. 1976)

" AN OAK LAYING DOWN 30" IN DIA. BEARS S 40° E ~ 208.9'

" (S 52° 15' E ~ 207.96' COR. REST. NO. 1976)

" AN OAK 44" IN DIA. @ NO APPARENT FACE BEARS

S 29° E ~ 193.71' (S 32° 40' E ~ 193.71' COR. REST. NO. 1976) SET

OK & 8' 6" W IN SW 1/4 BASE SET B.T. 1766 ON NW 1/4 FACE

" 1/2" I.D. I.P. 9" BELOW SURFACE B' N OF WIRE FENCE

BEARS N 30° E ~ 127.59' (S 0° 08' 1/2" W ~ 127.50' CS 4390)

PIPE IS 25 1/2" W'Y OF W. FND WIRE GATE

NO OTHER RECORD BEARING OBJECTS WERE RECORDED

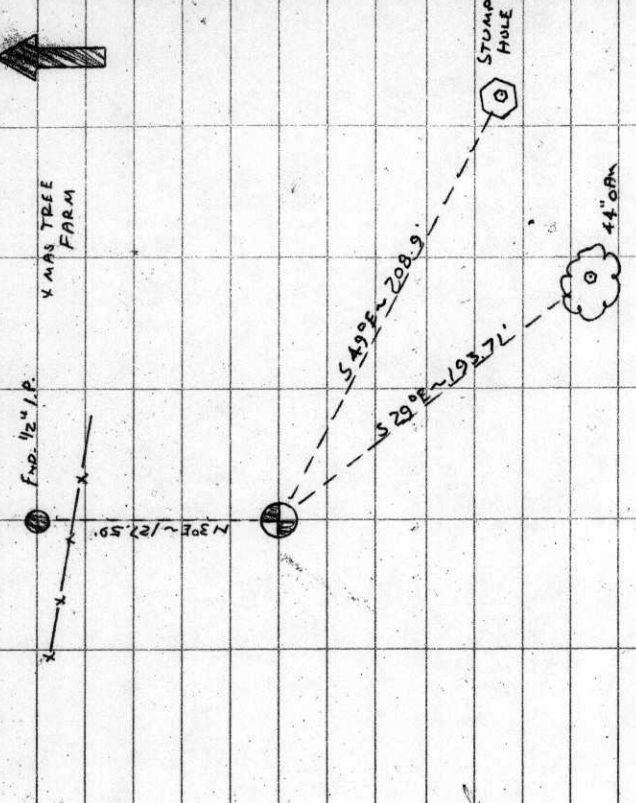
SET 2" I.D. x 36" LONG IRON PIPE @ A 3 1/4" BEN. CO. B.C.

STAMPED AS SHOWN CENTERED OVER THE RE-
COVERED PIPE

" ORANGE CARBONATE SURVEY MARKER POST 1.5' W

5/26

T 2002, D.I.S
8122 189, 27 L N, M.B.D. SILVA COMP 20° E DEC. SHIPS, WARM



THE COR. IS LOCATED IN A BLACKBERRY THicket ON A

STEEP SLOPING HILLSIDE, 50' ± S 1/4 OF THE BROW OF THE

HILL, 3.8' NW 1/4 OF A 3" OAK IT MAY BE OK FOR PRE-
MARKING & GAS CONTROL

NE COR D.L.C. 44

J.S. DOGGETT

CAP

STAMPINGS

D.L.C.

D.L.C.

42

44

T 135 R 6 W W.M.
1989

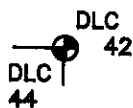
BENTON COUNTY CORNER RESTORATION FORM

3652

SECTION 8-2 TOWNSHIP 13 S RANGE 6 W DLC JAMES S. DOGGETT NO. 44 CORNER NE
DATE 8/22/89 CORNER RESTORATION FIELD BOOK NUMBER 5 PAGE 28

CORNER DESIGNATION:

THE NORTHEAST CORNER OF THE
JAMES S. DOGGETT DLC NO. 44.



- _____ CONDITION REPORT ONLY
- _____ REFERENCED OUT
- XX RENEWED
- _____ SURVEYED IN

LOCATION AND COMMENTS:

THE CORNER IS LOCATED IN A BLACKBERRY THICKET ON A STEEP, SOUTHERLY SLOPING HILLSIDE, APPROXIMATELY 50 FEET SOUTHERLY OF THE BROW OF A HILL AND 3.8 FEET NORTHEASTERLY OF AN OAK 3" IN DIAMETER.

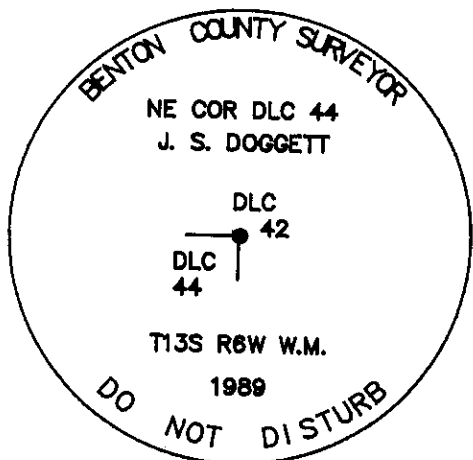
PREVIOUS RENEWALS/SURVEYS, ETC:

CORNER RESTORATION NO. 1976 BY W. C. GALLOWAY IN 1923.
COUNTY SURVEY NO. 4390 BY F. LEMKE IN 1967.
COUNTY SURVEY NO 4433 BY M. AVERY IN 1967.

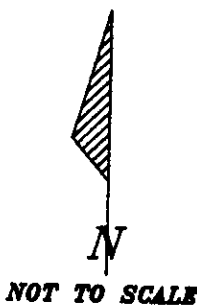
MONUMENTS AND ACCESSORIES FOUND (CONDITION AND SOURCE):

- FOUND: 1 1/4" INSIDE DIAMETER IRON PIPE, 0.5 FOOT ABOVE SURFACE FOR THE CORNER (CORNER RESTORATION NO. 1976).
 - FOUND: AN OAK 30" IN DIAMETER LYING DOWN; APPROXIMATE CENTER OF STUMP HOLE BEARS S 49° E 208.9 FEET (S 52° 15' E 207.96 FEET, CORNER RESTORATION NO. 1976).
 - FOUND: AN OAK 44" IN DIAMETER WITH NO APPARENT FACE BEARS S 29° E 193.71 FEET (S 32° 40' E 193.71 FEET, CORNER RESTORATION NO. 1976). SET A P.K. NAIL AND A B.C.B.W. IN THE SOUTH-WESTERLY BASE. SET A B.T. TAG ON THE NORTHWESTERLY FACE.
 - FOUND: 1/2" INSIDE DIAMETER IRON PIPE, 9" BELOW SURFACE, 8 FEET NORTH OF A WIRE FENCE, BEARS N 3° E 127.59 FEET (S 0° 06 1/2' W 127.50 FEET, COUNTY SURVEY NO. 4390). PIPE IS APPROXIMATELY 25 FEET WESTERLY OF THE WEST END OF A WIRE GATE.
- NO OTHER RECORD BEARING OBJECTS WERE RECOVERED.

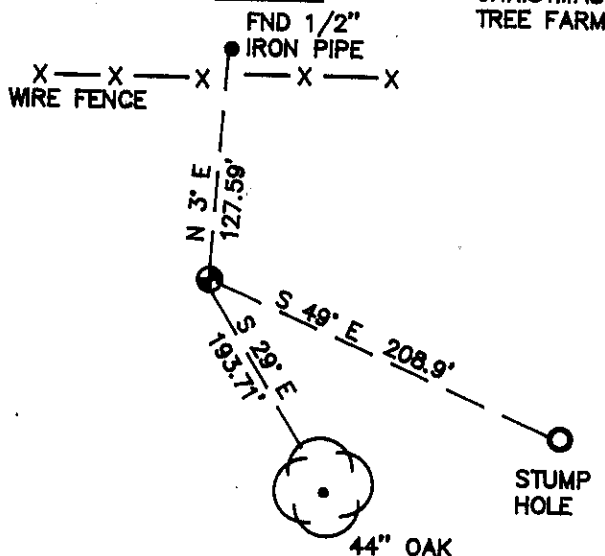
MONUMENT DETAIL



3 1/4" BRASS CAP



SKETCH



MONUMENT SET (PROCEDURES AND DESCRIPTION):

SET: 2" INSIDE DIAMETER X 36" LONG IRON PIPE WITH A 3 1/4" BENTON COUNTY BRASS CAP, STAMPED AS SHOWN, CENTERED OVER THE RECOVERED IRON PIPE.

NEW ACCESSORIES :

SET: AN ORANGE CARSONITE "SURVEY MARKER" POST 1 FOOT SOUTHERLY.

NOTES:

B.C.B.W. IS A BRASS WASHER STAMPED "BENTON COUNTY SURVEYOR". COMPASS DECLINATION IS 20° EAST. ALL MEASURED DISTANCES AND COMPASS BEARINGS ARE TO THE CENTER OF THE OBJECT, UNLESS OTHERWISE NOTED.

FIRM/AGENCY: BENTON COUNTY PUBLIC WORKS
ADDRESS: 360 S.W. AVERY AVE. CORVALLIS OR. 97333; PH. 757-6821
PARTY CHIEF: CURTIS J. LIESENFELT
CREW: MARY BARRON
WITNESS:

REGISTERED
PROFESSIONAL
LAND SURVEYOR

Danna L. Ingram-Fehrenbacher

OREGON
JULY 16, 1982
DANNA L. INGRAM-FEHNRENBACHER
1995