

CORNER FILE TRACKING

H:\Survey\Corners\Misc\Filetrac.doc

11/23/98

CORNER NUMBER
136845030

STEP	HISTORY()	RESTORATION()
Form Prepared, DB	11/1/00	11/15/00
Field Inspection, DB	11/3/00	11/3/00
Form Checked, DB	12/11/00	12/10/00
Form Edited, DB	12/15/00	12/15/00
Form Signed, DB	12/15/00	12/15/00
Authorize Payment, DB	—	—
Archive Digital Files		
Collect Documents	12/15/00	12/15/00
Scanned	12/19/00	12/19/00
Copy For Filming	12/16/00	12/16/00
Filed, DB		
Finish index (count unit)		
Filmed (Archived), DB		

(DB) = Entry needed in database (Access).

COMMENTS:

3-4-56 290-02-51 14.452 102-45-59

56) 25" D. FIR SCRIBED
"SW 45 BT" w/ALUM
NAIL & WASHER

SS

3-4-55 101-39-26 9.703 115-28-46

55) 21" D. FIR SCRIBED
"SW 45 BT" w/ALUM
NAIL & WASH

SS

3-4-54 222-29-25 15.12 84-58-39

54) SET REBAR w/YPC
6" ↓

SS

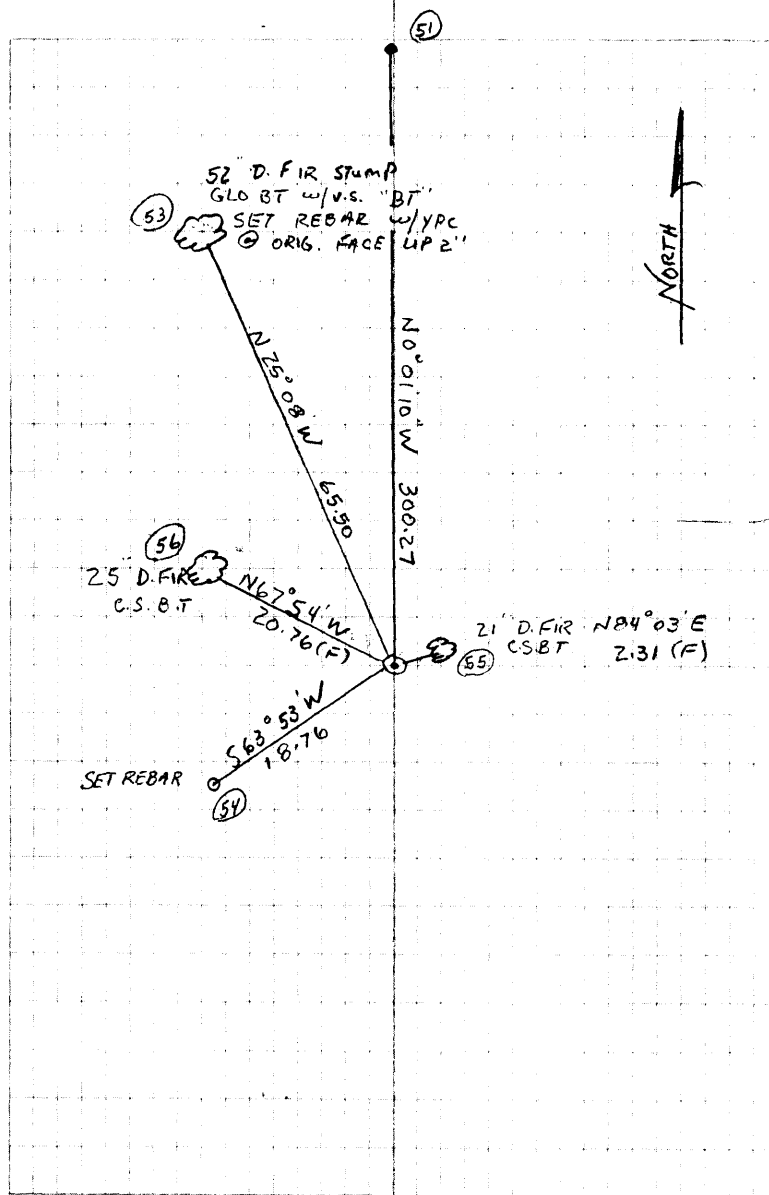
3-4-53 185-55-38 60.905 91-40-54

53) Fd 52" D FIR ROTTEN
STUMP - OPENED TO
V.S. "BT" (BACK CAST)
SET REBAR @ 0'16"
FACE w/YPC

SS

3-4-52

52) Fd 1" IP. FLUSH w/TOP
12" BROKEN OFF w/T
COUPLE



REMONUMENTING SW COR DLC 45
T135 R6W

THIN WALL

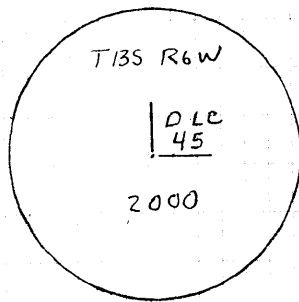
Fd 1" ^A IRON PIPE, BADLY RUSTED WITH
TOP 12" BROKEN OFF AND LYING ON THE
EAST SIDE OF REMAINING PIPE ^{2"} SAID
I.P. IS OF UNKNOWN ORIGIN. Fd
52"± ROTTED D. FIR STUMP ORIG GLO
BT WHICH WE OPENED TO VISIBLE
BACKCAST SCRIBING "BT" HELD
I.P. FOR CORNER POSITION AS BNG
& DIST FROM FACE OF GLO BT
IS WITHIN 0.52 FEET.

SET 2" X 36" 6 I.P. OVER SAID
1" I.P. W/ 3/4" BRASS DISK CEMENTED
IN THE TOP, UP 4", MKD AS SHOWN.
SET 6' FIBERGLASS "SURVEY MARKER"
POST 1' SOUTH OF MONUMENT.
SET REFERENCES AS SHOWN
ON PAGE 3 THIS BK.

11/3/00
CLDY, MID
D. DEAN
J. MARDIS

20/5

3/4" BRASS DISK



DATE 10/18/2000

TOWNSHIP 13 SOUTH, RANGE 6 WEST, WILLAMETTE MERIDIAN; SECTION 9 CORNER NONE
DONATION LAND CLAIM SAMUEL S. LENEVE NO. 45 CORNER SW

COMMON CORNER(S):

NONE

RECORDS (INFORMATION IN *BOLD ITALICS* IS COUNTY STAFFS' INTERPRETATION OF THE RECORD)

[01] ORIGINAL GLO SURVEY BY DENNIS HATHORN, D.S., DATED FEBRUARY 26, 1855. *SET POST WITH 1 FIR AND 2 CHINKAPIN BEARING TREES.*

COMMENTS/LOCATION/ETC:

NOTES:

THIS IS A MICROSOFT WORD 97 DOCUMENT NAMED "36845030" CREATED FROM A BOILER PLATE DOCUMENT NAMED "HISTORY", WHICH HAS A STYLESHEET NAMED "CORNER" ATTACHED TO IT.

FIRM/AGENCY: BENTON COUNTY SURVEYOR'S OFFICE
ADDRESS: 360 S.W. AVERY AVE. CORVALLIS OR 97333; PH. 766-6821
RESEARCH BY: CURTIS J. LIESENFELT, P.L.S.
DATA ENTRY BY: DAVID M. DEAN, P.L.S.

BENTON COUNTY CORNER RESTORATION FORM, PAGE 1 OF 2, 136845030R1

SEE CORNER HISTORY FORM FOR RECORDS ETC.

CORNER RESTORATION FIELD BOOK NUMBER 20 PAGE(S) 3 & 6 **DATE 11/03/2000**
TOWNSHIP 13 SOUTH, RANGE 6 WEST, WILLAMETTE MERIDIAN; SECTION 9 CORNER NONE
DONATION LAND CLAIM SAMUEL S. LENEVE NO. 45 **CORNER SW**
CONDITION REPORT ___; **REFERENCED OUT** ___; **RENEWED** XX; **SURVEYED IN** ___

LOCATION AND COMMENTS:

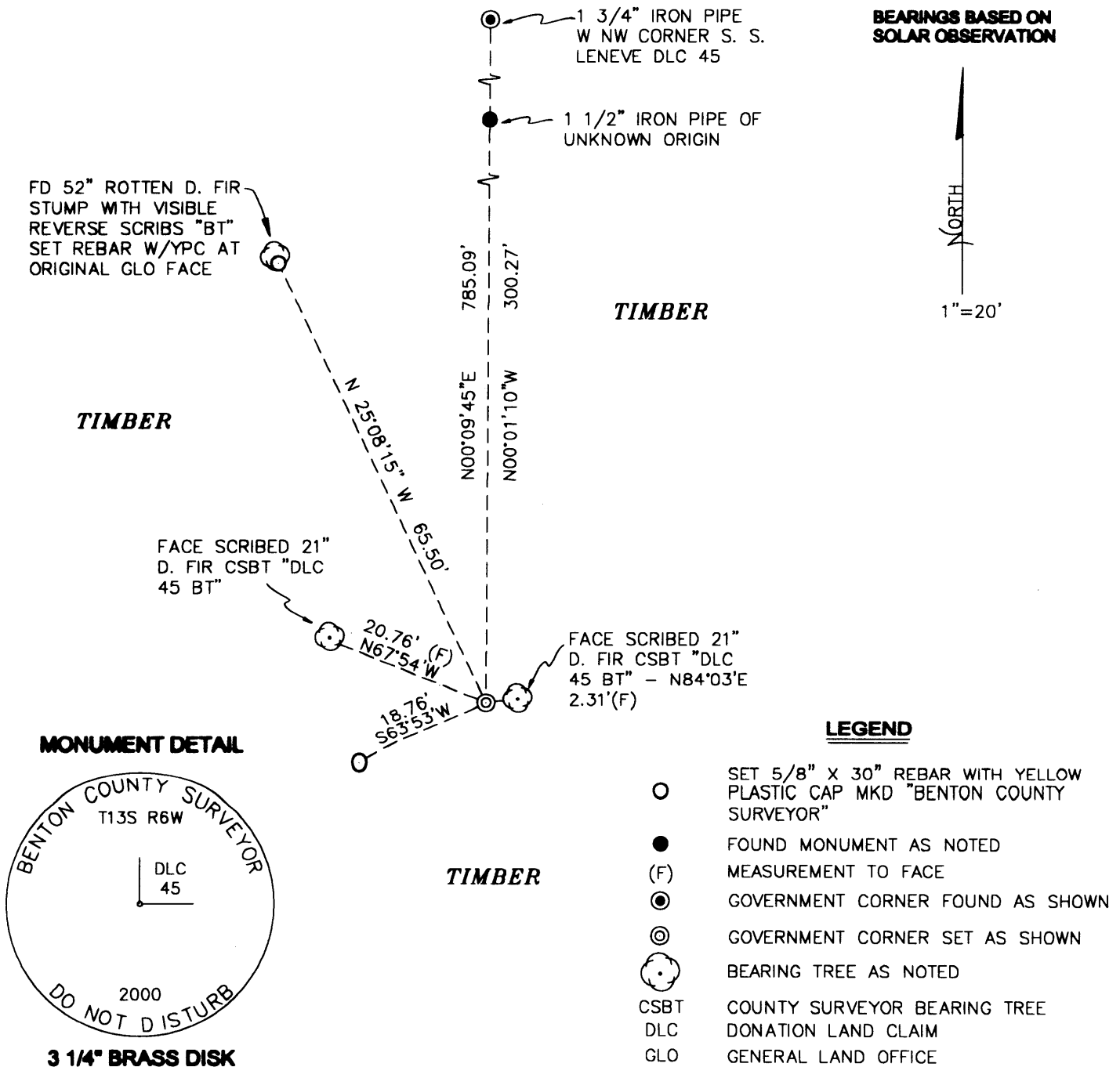
FROM THE JUNCTION OF BEAVER CREEK ROAD AND HENDERSON ROAD, TRAVEL WESTERLY ON HENDERSON ROAD FOR 1.32 MILES TO END OF COUNTY ROAD MAINTAINCE AND PARK. WALK SOUTH ALONG MOSTLY DOWN AND BURIED BARBED WIRE FENCE FOR 930 FEET TO CORNER IN TIMBER ON FLAT RIDGE TOP. CORNER IS POOR FOR PREMARKING AND GPS CONTROL.

MONUMENTS AND ACCESSORIES FOUND (CONDITION AND SOURCE):

- [01] FOUND 1" INSIDE DIAMETER X 30" UNRECORDED, BADLY RUSTED IRON PIPE WITH THE TOP 12" RUSTED OFF AND LYING NEXT TO THE 18" VERTICAL SECTION, 2" BELOW GROUND LEVEL FOR THE CORNER.
- [02] FOUND ORIGINAL GLO BEARING TREE, A 52" DIAMETER ROTTEN DOUGLAS FIR STUMP WHICH WE OPENED TO VISIBLE REVERSE SCRIBING "BT". SET REBAR (SEE NOTES) AT ORIGINAL FACE POSITION BEARING N25°08'W, 65.50 FEET. (20" FIR BEARING N25°W, 66.00 FEET PER RECORD [01]).
- [03] FOUND 1 3/4" IRON PIPE, 10" DEEP AT THE WEST NORTHWEST CORNER OF THE SAMUEL S. LENEVE DLC NO. 45 BEARING N00°09'45"E, 785.09 FEET. (FOUND ROTTEN SQUARE POST AND SET 1 3/4" TRUCK AXLE IN PLACE OF POST PER COUNTY ROAD NO. 36232 LOOSE LEAF "TOPO" NOTES (PAGES 8 AND 9) DATED JUNE 1962.).
- [04] FOUND 1 1/2" UNRECORDED IRON PIPE, FLUSH WITH GROUND LEVEL BEARING N00°01'10"W, 300.27 FEET.

MONUMENT SET (PROCEDURES AND DESCRIPTION):

HELD THE UNRECORDED 1" IRON PIPE FOR THE CORNER POSITION AND SET A 2" INSIDE DIAMETER X 36" GALVANIZED IRON PIPE WITH 3 1/4" BRASS DISK CEMENTED IN THE TOP, 4" ABOVE GROUND LEVEL, MARKED AS SHOWN AND CENTERED OVER SAID IRON PIPE. WE HELD THE POSITION OF THE 3/4" IRON PIPE BASED ON ITS CLOSE (0.53 FEET) PROXIMITY TO A CALCULATED CORNER FROM THE FACE OF ABOVE MENTIONED GLO BEARING TREE.



NEW ACCESSORIES:

SET: ALUMINUM NAIL AND PLASTIC WASHER IN THE LOWER FACE OF A 21" D. FIR CSBT, N84°03'E, 2.31 FEET (3.2 FEET TO CENTER) TO HEAD OF NAIL. SCRIBED "SW DLC 45 BT".

SET: ALUMINUM NAIL AND PLASTIC WASHER IN THE LOWER FACE OF A 25" D. FIR CSBT, N67°54'W, 20.76 FEET (21.8 FEET TO CENTER) TO HEAD OF NAIL. SCRIBED "SW DLC 45 BT".

SET: REBAR (SEE NOTES) 6" BELOW GROUND LEVEL, S63°53'W, 18.76 FEET.

SET: 6' FIBERGLASS "SURVEY MARKER POST" 1 FOOT SOUTH OF CORNER.

NOTES:

COMPASS DECLINATION IS 20° EAST. ALL MEASURED DISTANCES AND BEARINGS ARE TO THE CENTER OF THE OBJECT, UNLESS OTHERWISE NOTED. ALL BEARING TREES ARE PAINTED AND HAVE A B.T. TAG ATTACHED, FACING THE CORNER UNLESS OTHERWISE NOTED. ALL NEW BEARING TREES HAVE A PLASTIC WASHER (STAMPED "BENTON COUNTY SURVEYOR CORNER RESTORATION") ATTACHED (BY ALUMINUM NAIL) TO THE FACE, BELOW THE "BT" FOR DISTANCE AND ANGLE MEASUREMENT UNLESS OTHERWISE NOTED. ALL SET REBAR ARE 5/8" X 30" AND HAVE A YELLOW PLASTIC CAP (MARKED "BENTON COUNTY SURVEYOR") ATTACHED TO THE TOP.

THIS DOCUMENT WAS NAMED AND CREATED IN A MANNER SIMILAR TO THE HISTORY FORM.
THE NAME OF THE BOILER PLATE IS "MONUMENT". THE SKETCH IS FROM AUTOCAD RELEASE 14.

THIS RESTORATION WAS PERFORMED AT THE DIRECTION AND APPROVAL OF
THE BENTON COUNTY SURVEYOR. rw

FIRM/AGENCY: BENTON COUNTY SURVEYOR'S OFFICE
ADDRESS: 360 S.W. AVERY AVE. CORVALLIS OR 97333; PH. 766-6821
SURVEYOR: DAVID M. DEAN, P.L.S.
SURVEY CREW: JOE MARDIS, P.L.S.

