

CORNER FILE TRACKING

H:\Survey\Corners\Misc\Filetrac2.doc
06/15/2003

| |
|----------------------|
| CORNER NUMBER |
| 136845050 |

| STEP | HISTORY() | RESTORATION() |
|---------------------------|-----------|---------------|
| Form Prepared, DB | 1/3/08 | 8/18/08 |
| Field Inspection, DB | 8/15/08 | 8/15/08 |
| Form Checked, DB | 9/22/08 | 9/22/08 |
| Form Edited, DB | 9/29/08 | 9/29/08 |
| Form Signed, DB | 9/29/08 | 9/29/08 |
| Counter Index | 9/4/08 | 9/4/08 |
| GIS Index | 9/4/08 | 9/4/08 |
| Authorize Payment, DB | — | — |
| Archive Digital Files | 9/29/08 | 9/29/08 |
| Collect Documents | NONE | NONE |
| Scanned | 10/3/08 | 10/3/08 |
| Copy For Filming | 9/29/08 | 9/29/08 |
| Filed, DB | | |
| Finish index (count unit) | 8/15/08 | 8/15/08 |
| Filmed (Archived), DB | | |
| Document No's to Andrew | | |

(DB) = Entry needed in database (Access).

COMMENTS:

136845050

DATE 01/03/2008TOWNSHIP 13 SOUTH, RANGE 06 WEST, WILLAMETTE MERIDIAN; SECTION 10 CORNER NONE
DONATION LAND CLAIM SAMUEL S. LENEVE NO. 45 CORNER INTERIOR ELL**COMMON CORNER(S):**

SOUTHEAST CORNER OF THE A. F. RAGSDALE DLC NO. 46

RECORDS (INFORMATION IN *BOLD ITALICS* IS COUNTY STAFFS' INTERPRETATION OF THE RECORD)

BASED ON EXTENSIVE RESEARCH AND RECOVERY OF EVIDENCE, THIS OFFICE HAS DETERMINED THAT MOST GENERAL LAND OFFICE SURVEYORS MEASURED TO THE FACE OF BEARING TREES.

- [01] GENERAL LAND OFFICE (GLO) NOTES OF THE A. F. RAGSDALE DONATION LAND CLAIM (DLC) NO. 46 BY DENNIS HATHORN, D.S., DATED FEBRUARY 24, 1855. *SET POST FOR S.E. COR. FROM WHICH AN OAK 24 IN DIA BEARS S77°W, 525 LKS (346.50 FEET); AN OAK, 12 IN DIA BEARS S32°W, 288 LKS (190.08 FEET); AN OAK 20 IN DIA BEARS N78°E, 688 LKS (454.08 FEET).*
- [02] GLO NOTES OF THE SAMUEL S. LENEVE DLC NO. 45 BY DENNIS HATHORN, D.S., DATED FEBRUARY 26, 1855. *WEST . . . 75.42 CHAINS TO THE S.E. COR. OF CLAIM 46.*
- [03] COUNTY SURVEY NO. 2870 BY J. W. HANNA, P.L.S., DATED JANUARY 18, 1957. *SET 2" TRUCK AXLE FROM DEED DISTANCES SOUTH AND EAST. FOUND ORIGINAL BEARING TREES, AN OAK 24", S77°W, 346.50 FEET, DOWN AND VIRTUALLY ROTTED AWAY; AN OAK S32°W, 190.08 FEET, DOWN AND VIRTUALLY ROTTED AWAY.*
- [04] COUNTY SURVEY NO. 5023 BY BURT W. UDELL, P.E., DATED JANURAY 30, 1971. *NOT TIED OR DESCRIBED.*
- [05] COUNTY SURVEY NO. 5616 BY NICK YINGER, P.L.S., DATED FEBRUARY 1974. *S.E. COR. A. F. RAGSDALE DLC NO. 46 FOUND AXLE.*
- [06] COUNTY SURVEY NO. 6368 BY RICHARD W. FAIL, P.L.S., DATED MAY 4, 1977. *SE COR DLC 46 FD AXLE.*
- [07] COUNTY SURVEY NO. 6487 BY DAVID K. BATEMAN, P.L.S., DATED SEPTEMBER 30, 1977. *FD AXLE S.E. CORNER A. F. RAGSDALE DLC 46.*

NOTES:

THIS IS A MICROSOFT WORD 2003 DOCUMENT NAMED "36845050" CREATED FROM A BOILER PLATE DOCUMENT NAMED "HISTORY", WHICH HAS A STYLESHEET NAMED "CORNER" ATTACHED TO IT.

FIRM/AGENCY: BENTON COUNTY SURVEYOR'S OFFICE
ADDRESS: 360 S.W. AVERY AVE. CORVALLIS OR 97333; PH. 766-6821
RESEARCH BY: DAVID M. DEAN, P.L.S.
DATA ENTRY BY: SAME

BENTON COUNTY CORNER RESTORATION FORM, PAGE 1 OF 2, 136845050R1
SEE CORNER HISTORY FORM FOR RECORDS ETC.

CORNER RESTORATION FIELD BOOK NUMBER 27 PAGE(S) 16 DATE 08/15/2008
TOWNSHIP 13 SOUTH, RANGE 06 WEST, WILLAMETTE MERIDIAN; SECTION 10 CORNER N/A
DONATION LAND CLAIM SAMUEL S. LENEVE NO. 45 CORNER INTERIOR ELL
CONDITION REPORT ; REFERENCED OUT ; RENEWED XX; SURVEYED IN

LOCATION AND COMMENTS:

CORNER IS LOCATED ON A GENTLE NORTHERLY SLOPE ON THE SOUTH EDGE OF CHRISTMAS TREE PLANTATIONS. TO REACH THE CORNER FROM THE JUNCTION OF DECKER ROAD AND NUEMAN ROAD; TRAVEL WESTERLY ON NEUMAN ROAD FOR 0.36 MILES; THEN LEFT ON THE DRIVEWAY AT 24274 NEUMAN ROAD FOR 0.30 MILES; THEN LEFT ON DIRT ACCESS ROAD FOR 0.23 MILES; THEN RIGHT FOR 0.19 MILES SOUTH ALONG DIRT ACCESS ROAD AND PARK, CORNER IS APPROXIMATELY S45°E, ±55 FEET. CORNER IS POOR FOR PREMARKING AND GPS CONTROL.

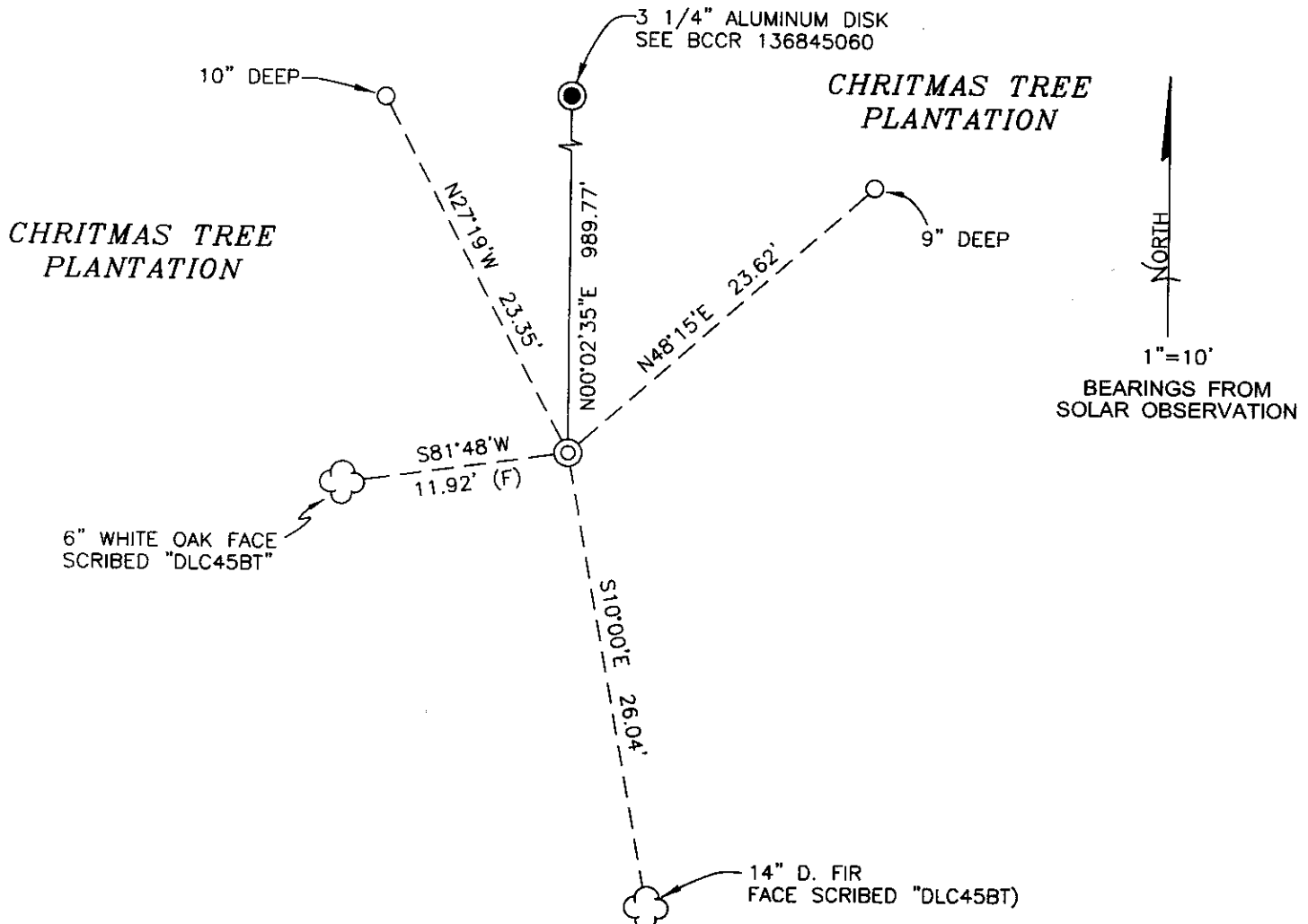
MONUMENTS AND ACCESSORIES FOUND (CONDITION AND SOURCE):

1. FOUND A TRUCK AXLE, 4" ABOVE GROUND LEVEL, FIRMLY SET FOR THE CORNER POSITION.
(SET A POST PER RECORD [01]).
(SET A 2" TRUCK AXLE PER RECORD [03]).
(FOUND AXLE PER RECORDS [05], [06] AND [07]).
2. FOUND A 3 1/4" ALUMINUM DISK FOR THE NORTH-NORTHEAST CORNER OF DLC 45, N00°02'35"E, 989.77 FEET. SEE BENTON COUNTY CORNER RESTORATION NO. 136845060.
(NORTH 990 FEET PER RECORD [01] AND [02]).
(FOUND A 3/4" PIPE, N00°04'E, 990.00 FEET PER RECORD [03]).
(FOUND A 3/4" PIPE, N00°05'E, 988.57 FEET PER RECORD [06]).

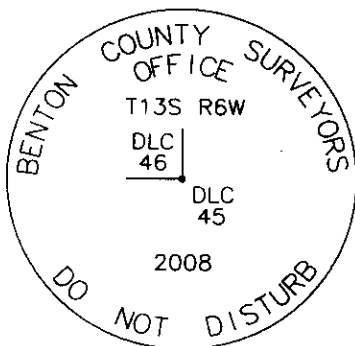
MONUMENT SET (PROCEDURES AND DESCRIPTION):

THE RECOVERED TRUCK AXLE WAS SET BY DISTANCE/DISTANCE INTERSECTION FROM THE SOUTHWEST CORNER AND THE EAST-NORTHEAST CORNERS OF THE A. F. RAGSDALE DLC NO. 46, USING GLO DISTANCES PER COUNTY SURVEY 2870 (RECORD [03]). SAID RECORD [03] ALSO RECOVERED BOTH GLO BEARING TREES WHICH WERE REPORTED TO BE DOWN AND MOSTLY ROTTED AWAY, BUT AT RECORD BEARING AND DISTANCE. NO EVIDENCE COULD BE FOUND OF EITHER GLO BEARING TREES. WE HAVE DETERMINED TO HOLD THE AXLE FOR THE TRUE CORNER POSITION AS THE BEST EVIDENCE TO PERPETUATE THE SUBJECT CORNER.

REMOVED TRUCK AXLE AND SET A 2" X 31 1/2" GALVANIZED IRON PIPE WITH A 3 1/4" ALUMINUM DISK CONCRETED ON THE TOP, 2" BELOW GROUND LEVEL AND MARKED AS SHOWN ON PAGE 2 OF 2. BURIED TRUCK AXLE IN A HORIZONTAL POSITION ON THE NORTH SIDE OF THE NEW MONUMENT, 5" BELOW GROUND LEVEL. SET A 6 FOOT ORANGE CARSONITE "SURVEY MARKER" POST 0.5 FEET SOUTH OF THE NEW MONUMENT.



MONUMENT DETAIL



3 1/4" ALUMINUM DISK

**SECOND GROWTH
D. FIR TIMBER**

LEGEND

- SET 5/8" X 30" REBAR WITH YELLOW PLASTIC CAP MKD "BENTON COUNTY SURVEYOR"
- (F) MEASUREMENT TO FACE
- (C) MEASUREMENT TO CENTER
- ⊙ GOVERNMENT MONUMENT SET AS SHOWN
- GOVERNMENT MONUMENT FOUND AS SHOWN
- ☁ BEARING TREE AS NOTED
- BCCR BENTON COUNTY CORNER RECORD

NEW ACCESSORIES:

1. SET REBAR (SEE LEGEND) 9" BELOW GROUND LEVEL, N48°15'E, 23.62 FEET.
2. SET REBAR (SEE LEGEND) 10' BELOW GROUND LEVEL, N27°19'W, 23.35 FEET.
3. 14" D. FIR FACE SCRIBED "DLC45BT" S10°00'E, 26.04 FEET TO FACE. SET ALUMINUM NAIL AND PLASTIC WASHER BELOW SCRIBING FOR DISTANCE AND ANGLE MEASUREMENT.
4. 6" WHITE OAK FACE SCRIBED "DLC45BT" S81°48'W, 11.92 FEET TO FACE. SET ALUMINUM NAIL AND PLASTIC WASHER BELOW SCRIBING FOR DISTANCE AND ANGLE MEASUREMENT.

NOTES:

COMPASS DECLINATION IS 20' EAST. ALL MEASURED DISTANCES AND BEARINGS ARE TO THE CENTER OF THE OBJECT, UNLESS OTHERWISE NOTED. ALL BEARING TREES ARE PAINTED AND HAVE A B.T. TAG ATTACHED, FACING THE CORNER UNLESS OTHERWISE NOTED. ALL NEW BEARING TREES HAVE A PLASTIC WASHER (STAMPED "SURVEYOR MARKER DO NOT REMOVE") ATTACHED BY AN ALUMINUM NAIL TO THE FACE, BELOW THE "BT" FOR DISTANCE AND ANGLE MEASUREMENT UNLESS OTHERWISE NOTED. THE DRAWING IS FROM AUTOCAD RELEASE 2008.

THIS RESTORATION WAS PERFORMED AT THE DIRECTION AND APPROVAL OF THE BENTON COUNTY SURVEYOR _____

REGISTERED
PROFESSIONAL
LAND SURVEYOR

9/29/08 *David M. Dean*

FIRM/AGENCY: BENTON COUNTY SURVEYOR'S OFFICE
 ADDRESS: 360 S.W. AVERY AVE. CORVALLIS, OR. 97333; PH. 766-6821
 PRESENT: BERNIE ALTENBACH AND TYLER OTT, SURVEY TECH.
 EQUIPMENT: LEICA TCR 1105 WITH TDS ON BOARD

OREGON
JULY 13, 1984
DAVID M. DEAN
2090

RENEWAL DATE: 12/31/09