

136845060

CORNER FILE TRACKING

H:\Survey\Corners\Misc\Filetrac2.doc
06/15/2003

CORNER NUMBER
136845060

STEP	HISTORY()	RESTORATION()
Form Prepared, DB	09/23/05	8/15/08
Field Inspection, DB	08/13/08	08/13/08
Form Checked, DB	9/22/08	9/22/08
Form Edited, DB	9/29/08	9/29/08
Form Signed, DB	9/29/08	9/29/08
Counter Index	9/3/08	9/3/08
GIS Index	9/3/08	9/3/08
Authorize Payment, DB	—	—
Archive Digital Files	9/29/08	9/29/08
Collect Documents	9/29/08	9/29/08
Scanned	9/30/08	9/30/08
Copy For Filming	9/29/08	9/29/08
Filed, DB	2/10/09	2/10/09
Finish index (count unit)	08/13/08	08/13/08
Filmed (Archived), DB	2/10/09	2/10/09
Document No's to Andrew	10/2/08	10/2/08

(DB) = Entry needed in database (Access).

COMMENTS:

DATE 09/23/2005TOWNSHIP 13 SOUTH, RANGE 6 WEST, WILLAMETTE MERIDIAN; SECTION 10 CORNER N/A
DONATION LAND CLAIM SAMUEL S. LENEVE NO. 45 CORNER N. N. W.**COMMON CORNER(S):**EAST - NORTHEAST OF A. F. RAGSDALE D.L.C. NO. 46
POINT ON SOUTH LINE OF THE JAMES DOGGETT DLC NO. 44**RECORDS (INFORMATION IN *BOLD ITALICS* IS COUNTY STAFFS' INTERPRETATION OF THE RECORD)**BASED ON EXTENSIVE RESEARCH AND RECOVERY OF EVIDENCE, THIS OFFICE HAS DETERMINED THAT MOST GENERAL LAND OFFICE
SURVEYORS MEASURED TO THE FACE OF BEARING TREES.

- [01] GENERAL LAND OFFICE (GLO), NOTES OF THE A. F. REGSDALE DLC 46 BY D. HATHORN, DATED FEBRUARY 24, 1855. *SET POST, 20" DIA. OAK, BEARS S26 1/2°E, 1524 LINKS (1005.84 FEET).*
- [02] GLO NOTES OF THE SAMUEL LENEVE DLC 45 BY D. HATHORN, DATED FEBRUARY 26, 1855. *INTERSECT SOUTH LINE OF CLAIM 44, SET POST.*
- [03] GLO NOTES OF THE JAMES DOGGETT DLC 44 BY D. HATHORN, DATE RECORDED SEPTEMBER 16, 1856. *TIED BUT NOT DESCRIBED.*
- [04] BENTON COUNTY SURVEY NO. 850 (OLD NO. 294), FIELD NOTES (FIELD BOOK NO. 33 PAGES 21-26), BY W. C. GALLOWAY, C.S., DATED MARCH 17, 1923. *SET 3/4" GALV. PIPE, 24" DIA. OAK STUMP, BEARS S26°26'E, 14.84 CHAINS (979.44 FEET), 10"X 10" ANCHOR POST, BEARS WEST, 0.424 CHAINS (27.98 FEET).*
- [05] BENTON COUNTY RESTORATION BOOK 1 PAGE 180, BY W. C. GALLOWAY, C.S., DATED MARCH 17, 1923. *SET 3/4" GALV. PIPE FROM A 24" DIA. OAK STUMP, BEARS S26°26'E, 14.84 CHAINS (979.44 FEET), 10"X 10" ANCHOR POST, BEARS WEST, 0.424 CHAINS (27.98 FEET).*
- [06] BENTON COUNTY MAP NO. 13-6 00001, BY W. C. GALLOWAY, C.S., DATED APRIL, 1923. *3/4" GALV. PIPE, 10"X 10" ANCHOR POST, BEARS WEST, 0.424 CHAINS (27.98 FEET).*
- [07] CORNER RESTORATION NO. 1979, BY W. C. GALLOWAY, C.S., DATED MARCH 17, 1923. *TRANSCRIBED COPY OF RECORD [05] AND MAY CONTAIN ERRORS AND/OR OMISSIONS.*
- [08] BENTON COUNTY SURVEY NO. 2870, BY J. W. HANNA, P.L.S., DATED JANUARY 18, 1957. *FOUND 3/4" PIPE.*
- [09] BENTON COUNTY SURVEY NO. 6368, BY RICHARD W. FAIL, P.L.S., DATED MAY 4, 1977. *FOUND 3/4" PIPE.*

NOTES:

THIS IS A MICROSOFT WORD 2003 DOCUMENT NAMED "36845060" CREATED FROM A BOILER PLATE DOCUMENT NAMED "HISTORY", WHICH HAS A STYLESHEET NAMED "CORNER" ATTACHED TO IT.

FIRM/AGENCY: BENTON COUNTY SURVEYOR'S OFFICE
ADDRESS: 360 S.W. AVERY AVE. CORVALLIS OR 97333; PH. 766-6821
RESEARCH BY: DAVID M. DEAN, P.L.S.
DATA ENTRY BY: WILLIAM C. KELLEY, SURVEY TECH.

BENTON COUNTY CORNER RESTORATION FORM, PAGE 1 OF 2, 136845060R2

SEE CORNER HISTORY FORM FOR RECORDS ETC.

CORNER RESTORATION FIELD BOOK NUMBER 27 PAGE(S) 15 DATE 08/13/2008
TOWNSHIP 13 SOUTH, RANGE 06 WEST, WILLAMETTE MERIDIAN; SECTION 10 CORNER N/A
DONATION LAND CLAIM SAMUEL S. LENEVE NO. 45 CORNER NORTH-NORTHWEST
CONDITION REPORT ; REFERENCED OUT ; RENEWED XX; SURVEYED IN

LOCATION AND COMMENTS:

CORNER IS LOCATED ON A GENTLE NORTHERLY SLOPE, IN AN OLD FENCE LINE (POST STANDING, NO WIRE), BETWEEN TWO CHRISTMAS TREE PLANTATIONS. TO REACH THE CORNER FROM THE JUNCTION OF DECKER ROAD AND NUEMAN ROAD; TRAVEL WESTERLY ON NEUMAN ROAD FOR 0.36 MILES; THEN LEFT ON THE DRIVEWAY AT 24274 NEUMAN ROAD FOR 0.30 MILES; THEN LEFT ON DIRT ACCESS ROAD FOR 0.23 MILES; THEN RIGHT FOR 0.01 MILES AND PARK, CORNER IS TWO FEET EAST OF THE ROAD. CORNER IS GOOD FOR PREMARKING AND GPS CONTROL.

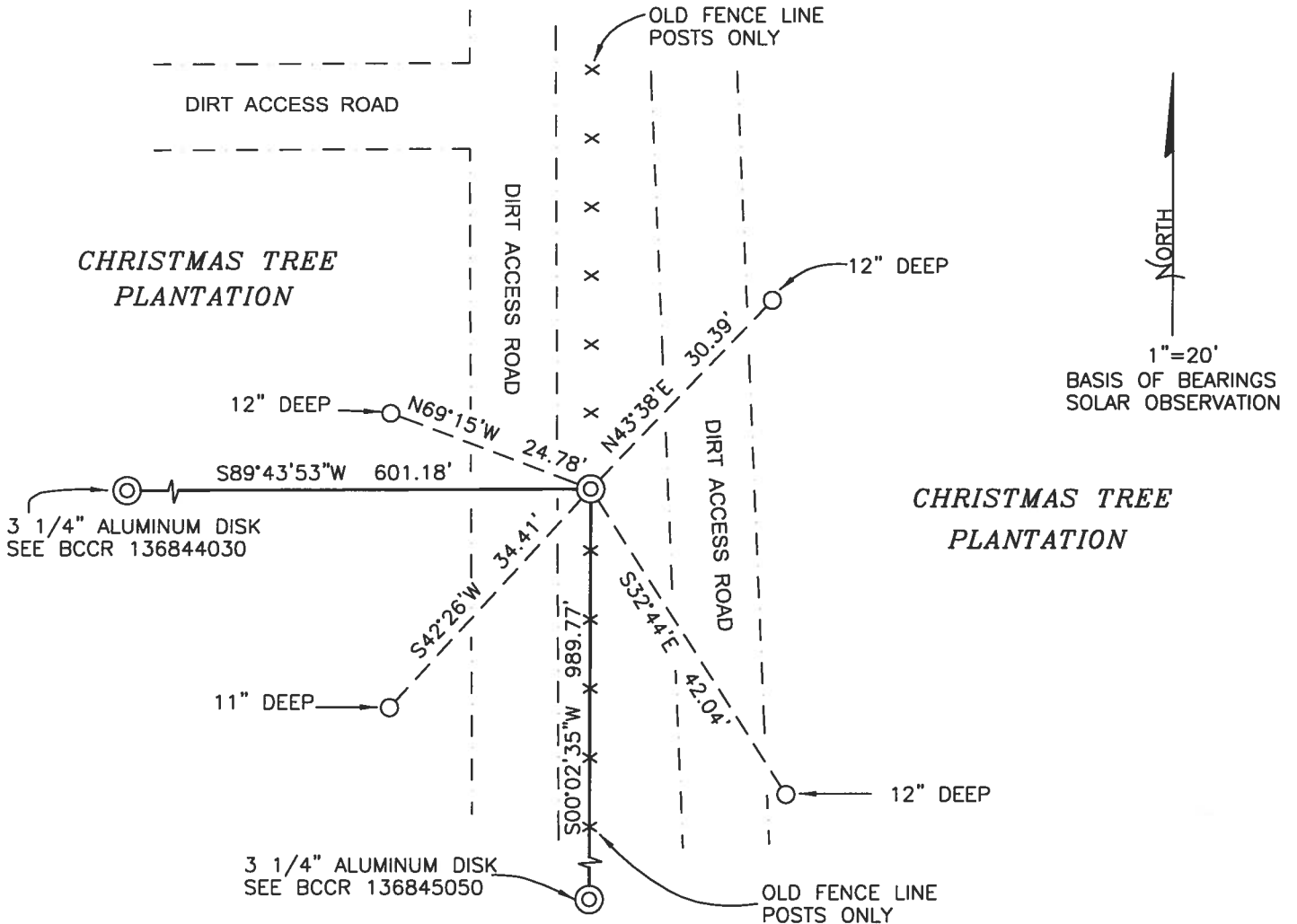
MONUMENTS AND ACCESSORIES FOUND (CONDITION AND SOURCE):

1. FOUND A 3/4" IRON PIPE, 5" BELOW GROUND LEVEL, FIRMLY SET FOR THE CORNER POSITION.
(SET A POST PER RECORD [01]).
(SET A 3/4" G. PIPE PER RECORDS [02] AND [03]).
(3/4" GALV. PIPE PER RECORD [06]).
(FOUND A 3/4" PIPE PER RECORDS [08] AND [09]).
2. FOUND A 3 1/4" ALUMINUM DISK AT THE INTERIOR ELL OF THE SAMUEL LENEVE DLC 45, S00°02'35"E, 989.77 FEET. SEE BENTON COUNTY CORNER RESTORATION NO. 136845050 FOR MORE DETAILS.
(SET POST, SOUTH, 990.00 FEET PER RECORDS [01] AND [02]).
(SET A 2" TRUCK AXLE S00°04'W, 990.00 FEET PER RECORD [08]).
(FOUND AN AXLE S00°05'W, 988.57 FEET PER RECORD [09]).
3. FOUND A 3 1/4" ALUMINUM DISK FOR THE SOUTHWEST CORNER OF DLC 44, N89°43'53"W, 601.18 FEET. SEE BENTON COUNTY CORNER RESTORATION NO. 136844030.
(WEST, 603.9 FEET PER RECORDS [01] – [03]).
(SET A QUART BOTTLE, S89°23'W, 600.80 FEET PER RECORD [04]).
(SET A QUART BOTTLE, WESTERLY (NO BEARING GIVEN), 600.80 FEET PER RECORD [06]).

MONUMENT SET (PROCEDURES AND DESCRIPTION):

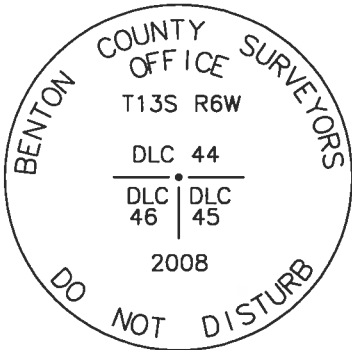
THE FOUND 3/4" IRON PIPE WAS SET FROM THE GLO BEARING TREE THAT IS NO LONGER IN EXISTENCE AND HAS BEEN ACCEPTED FOR OVER 80 YEARS, WE HELD THE SAID 3/4" IRON PIPE SET IN RECORDS [02] AND [03] AS THE TRUE CORNER POSITION.

WE LOWERED THE 3/4" IRON PIPE 14" BELOW GROUND LEVEL. OVER SAID 3/4" IRON PIPE, WE SET A 2" X 31 1/2" GALVANIZED IRON PIPE WITH A 3 1/4" ALUMINUM DISK CONCRETE IN THE TOP, 11" BELOW GROUND LEVEL AND MARKED AS SHOWN ON PAGE 2 OF 2. SET A 6 FOOT ORANGE CARSONITE "SURVEY MARKER" POST 0.5 FEET SOUTH OF THE NEW MONUMENT.



MONUMENT DETAIL

LEGEND



- SET 5/8" X 30" REBAR WITH YELLOW PLASTIC CAP MKD "BENTON COUNTY SURVEYOR"
- FOUND MONUMENT AS NOTED.
- ⊙ GOVERNMENT MONUMENT SET AS SHOWN
- ⊙ GOVERNMENT MONUMENT FOUND AS SHOWN
- C.S.B.T. COUNTY SURVEYORS BEARING TREE
- GLO GENERAL LAND OFFICE
- × FENCE POST

3 1/4" ALUMINUM DISK

NEW ACCESSORIES:

1. SET REBAR (SEE LEGEND) 12" BELOW GROUND LEVEL, N43°38'E, 30.39 FEET.
2. SET REBAR (SEE LEGEND) 12" BELOW GROUND LEVEL, S32°44'E, 42.04 FEET.
3. SET REBAR (SEE LEGEND) 11" BELOW GROUND LEVEL, S42°26'W, 34.41 FEET.
4. SET REBAR (SEE LEGEND) 12" BELOW GROUND LEVEL, N69°15'W, 24.78 FEET.

NOTES:

COMPASS DECLINATION IS 20° EAST. ALL MEASURED DISTANCES AND BEARINGS ARE TO THE CENTER OF THE OBJECT, UNLESS OTHERWISE NOTED. ALL BEARING TREES ARE PAINTED AND HAVE A B.T. TAG ATTACHED, FACING THE CORNER UNLESS OTHERWISE NOTED. ALL NEW BEARING TREES HAVE A PLASTIC WASHER (STAMPED "SURVEYOR MARKER DO NOT REMOVE") ATTACHED BY AN ALUMINUM NAIL TO THE FACE, BELOW THE "BT" FOR DISTANCE AND ANGLE MEASUREMENT UNLESS OTHERWISE NOTED. THE DRAWING IS FROM AUTOCAD RELEASE 2008.

THIS RESTORATION WAS PERFORMED AT THE DIRECTION AND APPROVAL OF THE BENTON COUNTY SURVEYOR _____

REGISTERED
PROFESSIONAL
LAND SURVEYOR

9/29/08 *David M. Dean*

FIRM/AGENCY: BENTON COUNTY SURVEYOR'S OFFICE
 ADDRESS: 360 S.W. AVERY AVE. CORVALLIS, OR. 97333; PH. 766-6821
 PRESENT: DAVID M. DEAN, P.L.S., BERNIE ALTENBACH AND TYLER OTT, SURVEY TECH.
 EQUIPMENT: LEICA TCR 1105 WITH TDS ON BOARD

OREGON
JULY 13, 1984
DAVID M. DEAN
2090

RENEWAL DATE: 12/31/09

C.S. 299

1/4 sec. cor. bet. Sees. 30 & 31 T. 10 - 4
 Set 3/4" iron with cog & planer blades ^{12" under} set from Alder 10" S. 74° W. 3.39
 Alder 12" in dia. bears S 82° W 3.600 chs. (In dump of alders)
 Mile post 78 on W. side Highway N. 55° 36' E. 6.578 chs. Bearing of parameter
 on slope N. 10° 01' E.
 Witnesses Ed. Blake and G. E. Burge March 1925

C.S. 29

W. C. Galloway C.S.

March 17, 1923.

Witness B. K. Taylor

N.W. corner of James Doggett D.L.C. 44 T. 13-6
 Set 3/4" pipe, at fence cor. Oak 12" S. 22° W 3.21 top root
 Oak 12" in dia. bears S. 25° E 3.70 chs. std.
 Mkd. " 3" " " S. 59° 20' E. 2.29 "
 Anchor post S 38° W. 0.44 "

" S.W. cor. of Thos. H. Linville D.L.C. 47 T. 13-6
 Set a gun barrel from old witness tree S.E.
 Marked Oak 14" in dia. bears S. 88° 27' E. 1.566 chs.

" S.E. cor. of Thos. H. Linville D.L.C. 47 T. 13-6
 Set Stone 5" x 7" x 16"
 Mkd. Oak 13" in dia. bears N 0° 17' W. 1.559 chs.
 " " 8" " " S. 88° 30' W. 2.548 "

" N.E. cor. of James Doggett D.L.C. 44 T. 13-6
 Set 1/4" pipe w/ oak stake
 Oak stump 18" S 55° E 13.46 orig. tree.
 Mkd. " 15" in diameter S 52° 15' E 3.188 at - 8° 45' = 3.151 chs.
 " " 6" " S 32° 40' E. 3.028 at - 14° 15' = 2.935 "
 Center of top of concrete reservoir 4.934 at - 13° 10' = 4.804 "
 W. edge of post on N. of road 16' W. of school fence S. 0° 01' E.

" S.E. corner of James Doggett D.L.C. 44 T. 13-6
 Set 1 1/4" shaft, 3/8" bolt on top
 Set 3/4" iron pin S 0° 18' E. 20 feet
 " 3/8" " rod N. 0° 18' W. 20 "
 Mkd. Oak 16" in dia. bears S. 18° 10' E. 1.271 chs.

" S.W. corner of James Doggett D.L.C. 44 T. 13-6
 Set a Quart bottle 12" under surface
 Oak 8" in dia. bears N. 29° 49' E. 4.48 chs. std. (Needle 499 N 30° E. Bearing from line)
 1/4 sec. cor. between sections 3 and 10 bears N. 5° 19' W. 8.269 chs.

" Most N. N.W. cor. of Samuel Leneve D.L.C. 45 T. 13-6
 Set 3/4" galv. pipe from Oak stump 24" S. 26° 21' E. 14.84 chs.
 and stick at corner south 15.02 chs.
 Anchor post 10" x 10" West. 4.24 chs.

C.S. 77

N.W. corner of David Belcher D.L.C. 44 T. 14 S. R. 5 W.
 Set a Stone 6" x 8" boulder on south side of corner post
 No trees near.
 Witness Watkins Nov. 6, 1910

C.S.

by W.

Nov

with

James

T

W.C.

Wit

Cor

By

Al

S

W.

Most N. N. W. corner of Samuel Leneve DLC 45, Twp. 13-6

1979

Reestablishment by W. C. Galloway

March 17, 1923

Set $\frac{3}{4}$ " galvanized pipe from Oak stump 24" S 26° 26' E 14.84 chains and
stick at corner south 15.02 chains

Anchor post 10" x 10" west .424 chains

Witness Byron K. Taylor