

CORNER FILE TRACKING

H:\Survey\Corners\Misc\Filetrac.doc

11/23/98

CORNER NUMBER
136850030

STEP	HISTORY()	RESTORATION()
Form Prepared, DB	7/12/01	7/12/01
Field Inspection, DB	7/13/01	7/13/01
Form Checked, DB	7/25/01	7/25/01
Form Edited, DB	7/25/01	7/25/01
Form Signed, DB	7/25/01	7/25/01
Authorize Payment, DB	_____	_____
Archive Digital Files		
Collect Documents		
Scanned	7/27/01	7/27/01
Copy For Filming		
Filed, DB		
Finish index (count unit)		
Filmed (Archived), DB		

(DB) = Entry needed in database (Access).

COMMENTS:

049 208
217
256

CORNER RESEARCH

AUTHOR: DMD
TOWNSHIP: 13-6
CORNER: SW S. GATES #50
SE J BRYANT #51

CORNER NO. 136850030
136851020
DATE 7/12/01

SURVEYS:

0) 669 ~~277~~ 447

1) 417 469

2)

3)

4) 766

5) 917 701

6)

7)

8)

9) 517 616

10)

11)

12)

13)

14)

15)

16)

17)

ANDREW PORTER SURVEYS: NONE

SURVEY FIELD BOOKS: (27-4) 17-23 73-38-45

73-26-33 17-68 12-39

GALLOWAY HARDCOPIES: 13-6-6 13-6-11 13-6-12

SUBDIVISION'S:
NONE

PARTITION'S:
NONE

COUNTY ROAD'S:
36230 (BENNER C/L)

OTHER ROADS AND HWY'S:
N/A

CORNER REST. BK. 1: (4-8) (1-226)

OTHER RESTORATIONS: 1989 1992

BPA: NONE

RAIL ROADS: NONE

GLO NOTES:

MISC. RECORDS:

REMONUMENTING SW COR J GATES DLC #50

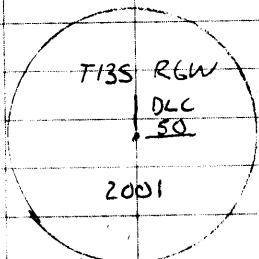
T135 R6W

(LANDSIDE?)

Fd PLOW SHARE (1/2" X 6" X 25") 3" ABOVE
GROUND LEVEL FOR COR. - USED HIGH POINT
FOR EXACT POSITION - REMOVED AND SET
NEW MON.

- Fd ± 44" ROTTEN D. FIR STUMP W/ALUM
NAIL IN TOP CTR. - NO FACE OR SCRIBES &
NO SPIKE - DIST & BNG TO ALUM. NAIL
- Fd ± 26" ROTTEN D. FIR STUMP CSBT - NO MKS
VISIBLE - NO SPIKE
- Fd ± 24" ROTTEN D. FIR UPROOT STUMP W/US
"BT" ON OPENED FACE - NO SPIKE
- Fd ± 16" BURNED OAK UPROOT AND ROOT
HOLE AT APPROX POSITION OF NE GLO BT
W/AXE WORK - NO VISIBLE MKS. SET REBAR
IN ± CTR OF ROOT HOLE.
- Fd CLUMP OF 3 CHINQUAPIN IN CLOSE VICINITY
OF NW CSBT

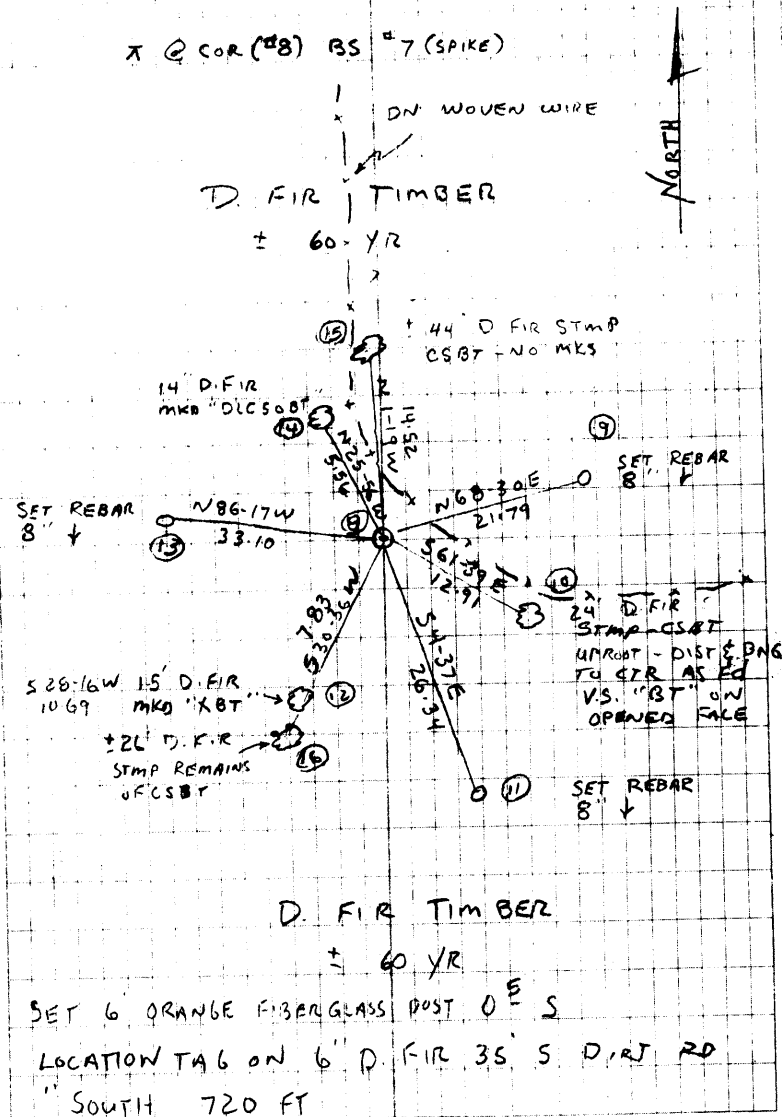
SET 2" X 36" GIP W/3" 1/4" BRASS
DISK 1" ↓ MKP AS SHOWN
RESET PLOW SHARE IN HORIZ
POSITION ON W SIDE NEW
MON 7" ↓



3 1/4" BRASS DISK

D. DEAN
J. RUDIGER
LEICA TC21105
TDS/PCMCI

7/13/01 20/28
AND
7/17/01



D. FIR TIMBER
± 60 YR

SET 6 ORANGE FIBERGLASS POST O E S
LOCATION TAG ON 6" D. FIR 35' S D. RT RD
SOUTH 720 FT

(S)

S. E. corner of William Bennett Cl 50, Twp. 13 S., R. 6 W.

1988

Reestablishment by W. C. Galloway

August 11, 1916

Set 1" pipe

Fir 18" in diam bears S 89° E
Fir 14" in diam bears S 35° 30' W

1.73 chains (standing)
.305 chains

Witnesses R. L. Jones and Oliver Rogers

Sec. 14

S. W. corner William Bennet Cl 50, Twp. 13 S., R. 6 W

1940 **1989**

Reestablishment by W. C. Galloway

Set a plow share for corner, original corner

Fir 40" in diam bears N 4° W
Fir 21" in diam bears S 56° E
Fir 23" in diam bears S 30° W
Chinkapin 11" in diam bears N 70° 40' W

0.221 chains
0.199 chains
0.190 chains
0.227 chains

Witness Adrian Seits

Sec. 15

DATE 07/12/2001TOWNSHIP 13 SOUTH, RANGE 6 WEST, WILLAMETTE MERIDIAN; SECTION 15 CORNER NONE
DONATION LAND CLAIM STEPHEN GATES NO. 50 CORNER SOUTHWEST**COMMON CORNER(S):**

NONE

RECORDS (INFORMATION IN *BOLD ITALICS* IS COUNTY STAFFS' INTERPRETATION OF THE RECORD)

- [01] ORIGINAL GLO SURVEY BY DENNIS HATHORN, D.S., DATED MARCH 2, 1855. *SET POST WITH 2 OAK BEARING TREES.*
- [02] BENTON COUNTY MAP NO. 13-6-00006 BY W. C. GALLOWAY, C.S., DATED MAY 26, 1917. *NO MONUMENT DESCRIPTION.*
- [03] COUNTY SURVEY NO. 1469 (OLD NO. 208) NOTES (FIELD BOOK 73, PAGE 42) BY W. C. GALLOWAY, C.S., DATED APRIL 19, 1940. *FOUND BOTH GLO BEARING TREES DOWN. SET A PLOWSHARE WITH 3 FIR BEARING TREES AND 1 CHINKAPIN BEARING TREE.*
- [04] OLD CORNER RESTORATION BOOK NO. 1, PAGE 226 BY W. C. GALLOWAY, C.S., DATED APRIL 19, 1940. *SIMILAR INFORMATION AS RECORD [03].*
- [05] CORNER RESTORATION NO. 1989. *THIS IS TRANSCRIBED FROM RECORD [04] AND MAY CONTAIN ERRORS AND/OR OMISSIONS.*
- [06] BENTON COUNTY MAP NO. 13-6-00011 BY BURT WILKES, D.C.S., DATED MAY 12, 1914. *PLOW SHARE AND 4 COUNTY SURVEYOR BEARING TREES.*
- [07] BENTON COUNTY MAP NO. 13-6-00012 BY W. C. GALLOWAY, DATED JULY 9, 1919. *NO MONUMENT DESCRIPTION.*
- [08] COUNTY SURVEY NO. 9517 BY JIM PETERSON, P.L.S., DATED NOVEMBER 23, 1999. *FOUND PLOW SHARE AND 3 COUNTY SURVEYOR BEARING TREES.*

COMMENTS/LOCATION/ETC:**NOTES:**

THIS IS A MICROSOFT WORD 97 DOCUMENT NAMED "36850030" CREATED FROM A BOILER PLATE DOCUMENT NAMED "HISTORY", WHICH HAS A STYLESHEET NAMED "CORNER" ATTACHED TO IT.

FIRM/AGENCY: BENTON COUNTY SURVEYOR'S OFFICE
ADDRESS: 360 S.W. AVERY AVE. CORVALLIS OR 97333; PH. 766-6821
RESEARCH BY: DAVID M. DEAN, P.L.S.
DATA ENTRY BY: DEAN

SEE CORNER HISTORY FORM FOR RECORDS ETC.

CORNER RESTORATION FIELD BOOK NUMBER 20 **PAGE(S)** 28 **DATE** 07/13/2001
TOWNSHIP 13 SOUTH, **RANGE** 6 WEST, **WILLAMETTE MERIDIAN**; **SECTION** 15 **CORNER** NONE
DONATION LAND CLAIM STEPHEN GATES NO. 50 **CORNER** SOUTHWEST
CONDITION REPORT ___; **REFERENCED OUT** ___; **RENEWED** XX; **SURVEYED IN** ___

LOCATION AND COMMENTS:

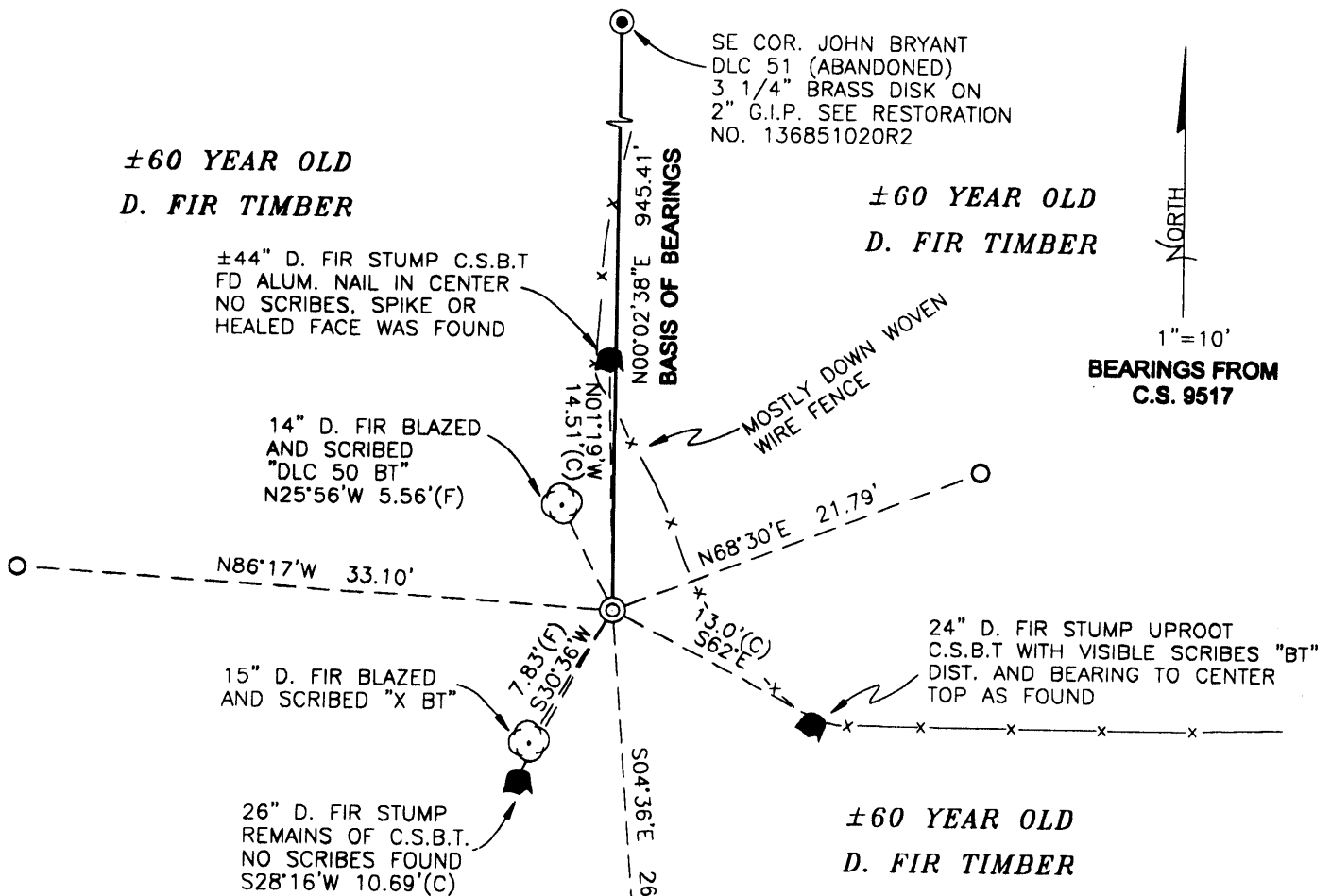
CORNER FALLS IN A STAND OF ± 60 YEAR OLD D. FIR TIMBER, ON A GENTLE SOUTHEAST SLOPE. TO REACH CORNER FROM THE JUNCTION OF DECKER AND SAXTON ROADS, TRAVEL EASTERLY ON SAXTON ROAD FOR 0.32 MILES TO THE END OF COUNTY MAINTAINANCE AND LOCKED GATE (GET KEY FROM HOLIDAY TREE FARMS); THEN EASTERLY THROUGH GATE FOR 0.01 MILES; THEN BEAR RIGHT (EASTERLY) AT "T" JUNCTION FOR 0.02 MILES; THEN BEAR RIGHT (SOUTHERLY) AT THREE WAY ROAD SPLT FOR 0.17 MILES; THEN BEAR RIGHT (WESTERLY) AT "T" JUNCTION FOR 0.22 MILES; THEN BEAR RIGHT (STRAIGHT/WESTERLY) ON TO DIRT ROAD ALONG THE NORTHERLY SIDE OF A CHRISTMAS TREE PLANTATION FOR 0.08 MILES TO A LOCATION TAG ON A 6" D. FIR, APPROXIMATELY 35 FEET SOUTH OF SAID DIRT ROAD; THEN SOUTH ALONG BLAZED AND PAINTED LINE FOR 720 FEET TO CORNER. CORNER IS POOR FOR PREMARKING AND GPS CONTROL.

MONUMENTS AND ACCESSORIES FOUND (CONDITION AND SOURCE):

- 01) FOUND 25"x6"x1/2" PLOW SHARE, 3" ABOVE GROUND FOR CORNER POSITION.
(SET A PLOWSHARE PER RECORD [03], AND [04]).
(PLOWSHARE PER RECORD [06]).
(FOUND PLOWSHARE PER RECORD [08]).
- 02) FOUND ± 44 " D. FIR STUMP C.S.B.T. WITH AN ALUMINUM NAIL IN THE CENTER, N1°19'W, 14.51 FEET TO ALUMINUM NAIL. NO HEALED FACE OR SCRIBE MARKS COULD BE FOUND ON THIS STUMP.
(40" FIR N4°W, 14.59 FEET PER RECORD [03], [04] AND [06]).
(44" FIR STUMP, N4°W, 14.59 FEET (SHOWN AS RECORD) PER RECORD [08]).
- 03) FOUND 24" D. FIR STUMP UPROOT C.S.B.T. WITH VISIBLE SCRIBING "BT" ON OPENED FACE, S62°E, 13.0 FEET TO TOP CENTER AS FOUND. THIS STUMP HAS BEEN UPROOTED TO THE NORTH FROM ORIGINAL POSITION.
(21" FIR S56°E, 13.13 FEET PER RECORDS [03], [04] AND [06]).
(28" FIR STUMP UPROOT S56°E, 13.13 FEET (SHOWN AS RECORD) PER RECORD [08]).
- 04) FOUND REMAINS OF ± 26 " D. FIR C.S.B.T., S28°16'W, 10.69 FEET TO CENTER STUB OF REMAINS. SET ALUMINUM NAIL AND PLASTIC WASHER IN NORTHWESTERLY BASE FOR DISTANCE MEASUREMENT.
(23" FIR S30°W, 12.54 FEET PER RECORDS [03], [04] AND [06]).
(34" FIR STUMP, S30°W, 12.54 FEET (SHOWN AS RECORD) PER RECORD [08]).
- 05) FOUND ± 16 " DOWN AND BURNED OAK UPROOT AND ROOT HOLE IN CLOSE VICINITY OF NORTHEAST GLO BEARING TREE, (N62°E, 33.00 FEET).
(15" OAK N62°E, 33.00 FEET PER RECORD [01]).
(BOTH OAKS DOWN PER RECORDS [03] AND [04]).
- 06) FOUND CLUSTER OF 3 ± 10 " CHINQUAPIN'S IN CLOSE VICINITY OF NORTHWEST C.S.B.T., (N70°40'W, 14.98 FEET).
(11" CHINQUAPIN, N70°40'W, 14.98 FEET PER RECORDS [03], [04] AND [06])
(CHINQUAPIN CLUSTER IN VICINITY OF GALLOWAY NW BT PER RECORD [08]).
- 07) FOUND 3 1/4" BRASS DISK ON 2" GALVANIZED IRON PIPE AT THE SOUTHEAST CORNER OF THE JOHN BRYANT D.L.C. NO. 51 (ABANDONED), N0°02'38"E, 945.41 FEET.
(NORTH, 940.08 FEET PER RECORD [01]).
(N0°02'38"E, 945.38 FEET PER RECORD [10]).

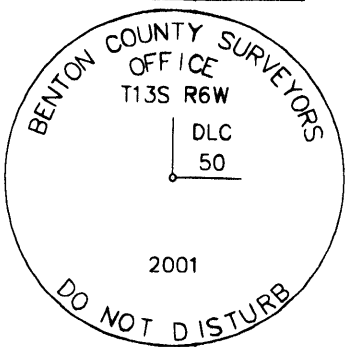
MONUMENT SET (PROCEDURES AND DESCRIPTION):

HELD THE HIGH POINT OF SAID FOUND PLOWSHARE FOR THE CORNER POSITION. REMOVED PLOWSHARE AND SET A 2" INSIDE DIAMETER X 36" GALVANIZED IRON PIPE WITH A 3 1/4" BRASS DISK CEMENTED IN THE TOP, 1" BELOW GROUND LEVEL, MARKED AS SHOWN. RESET PLOWSHARE ON THE WEST SIDE OF NEW MONUMENT IN A HORIZONTAL POSITION, 7" BELOW GROUND LEVEL.



NORTH
1"=10'
BEARINGS FROM
C.S. 9517

MONUMENT DETAIL



3 1/4" BRASS CAP

±60 YEAR OLD
D. FIR TIMBER

LEGEND

- SET 5/8" X 30" REBAR WITH YELLOW PLASTIC CAP MKD "BENTON COUNTY SURVEYOR"
- (C) MEASUREMENT TO CENTER
- (F) MEASUREMENT TO FACE
- ⊙ GOVERNMENT MONUMENT SET AS SHOWN
- ⊙ BEARING TREE AS NOTED
- ⊙ GOVERNMENT MONUMENT FOUND AS SHOWN
- V.S. VISIBLE SCRIBES
- C.S.B.T. COUNTY SURVEYOR BEARING TREE
- G.I.P. GALVANIZED IRON PIPE
- DLC DONATION LAND CLAIM

NEW ACCESSORIES:

- 01) BLAZED AND SCRIBED A 14" D. FIR, "DLC 50 BT", N25°56'W, 5.56 FEET TO AN ALUMINUM NAIL AND PLASTIC WASHER SET IN THE LOWER PART OF BLAZE, BELOW SCRIBES.
- 02) BLAZED AND SCRIBED A 15" D. FIR "X BT", S30°36'W, 7.83 FEET TO AN ALUMINUM NAIL AND PLASTIC WASHER SET IN THE LOWER PART OF BLAZE, BELOW SCRIBES.
- 03) SET REBAR (SEE LEGEND) 8" BELOW GROUND LEVEL, N68°30'E, 21.79 FEET.
- 04) SET REBAR (SEE LEGEND) 8" BELOW GROUND LEVEL, S4°36'E, 26.34 FEET.
- 05) SET REBAR (SEE LEGEND) 8" BELOW GROUND LEVEL, N86°17'W, 33.10 FEET.

NOTES:

COMPASS DECLINATION IS 20° EAST. ALL MEASURED DISTANCES AND BEARINGS ARE TO THE CENTER OF THE OBJECT, UNLESS OTHERWISE NOTED. ALL BEARING TREES ARE PAINTED AND HAVE A B.T. TAG ATTACHED, FACING THE CORNER UNLESS OTHERWISE NOTED. ALL NEW BEARING TREES HAVE A PLASTIC WASHER (STAMPED "BENTON COUNTY SURVEYOR CORNER RESTORATION") ATTACHED (BY ALUMINUM NAIL) TO THE FACE, BELOW THE "BT" FOR DISTANCE AND ANGLE MEASUREMENT UNLESS OTHERWISE NOTED.

THIS DOCUMENT WAS NAMED AND CREATED IN A MANNER SIMILAR TO THE HISTORY FORM. THE NAME OF THE BOILER PLATE IS "MONUMENT". THE SKETCH IS FROM AUTOCAD RELEASE 14.

THIS RESTORATION WAS PERFORMED AT THE DIRECTION AND APPROVAL OF THE BENTON COUNTY SURVEYOR, _____

FIRM/AGENCY: BENTON COUNTY SURVEYOR'S OFFICE
ADDRESS: 300 S.W. AVERY AVE. CORVALLIS OR 97333; PH. 766-8821
SURVEYOR: DAVID M. DEAN, P.L.S.
SURVEY CREW: JOSH RUDIGER, SURVEY TECH

REGISTERED
PROFESSIONAL
LAND SURVEYOR

David M. Dean 7/29/01

OREGON
JULY 13, 1984
DAVID M. DEAN
2090

RENEWAL DATE: 12/31/01