

BENTON COUNTY CORNER RESTORATION FORM

TOWNSHIP 13 SOUTH, RANGE 7 WEST, W.M., SECTION 13, CORNER LINE-TREE
DONATION LAND CLAIM _____ CORNER _____

DATE 2/5/92, CORNER RESTORATION FIELD BOOK _____ PAGE _____

___ CONDITION REPORT ONLY; ___ REFERENCED OUT; XX RENEWED; ___ SURVEYED

LOCATION AND COMMENTS:

FROM WHERE THE SOUTH LINE OF SECTION 14 CROSSES THE MAINLINE GRAVEL ROAD 950' EAST OF THE SOUTH 1/4 CORNER (SEE K-TAG ON NORTH SIDE OF ROAD), DRIVE NORTHWESTERLY ON GRAVEL SPUR FOR 0.7 MILES TO DIRT SPUR AND CLEARCUT ON RIGHT. WALK CAT ROAD ALONG SOUTH SIDE OF CLEARCUT (ON RIDGETOP) FOR 1000' TO THE EAST. AT END OF CAT ROAD WALK EAST 250' TO POSTED LINE AND CORNER. AT POSTED LINE WALK NORTH 2155' TO THE LINE TREE. LINE TREE IS 100' SOUTH OF RIDGETOP. BLAZE LINE RUNS NORTH-SOUTH THRU LINE-TREE

PREVIOUS RENEWALS / SURVEYS, ETC.:

① 1882 - ORIGINAL GLO SURVEY BY R.O. COLLIER

MONUMENTS FOUND (CONDITION AND SOURCE):

FOUND LIVE 28" FIR WITH 2 NOTCHES ON NORTH AND 2 NOTCHES ON SOUTH SIDES, LOCATED ON THE NORTH 1/2 OF THE WEST LINE OF SECTION 13.

ACCESSORIES FOUND (CONDITION AND SOURCE):

NO ACCESSORIES FOUND

MONUMENT SET (PROCEDURES AND DESCRIPTION):

NO MONUMENT SET

NEW ACCESSORIES:

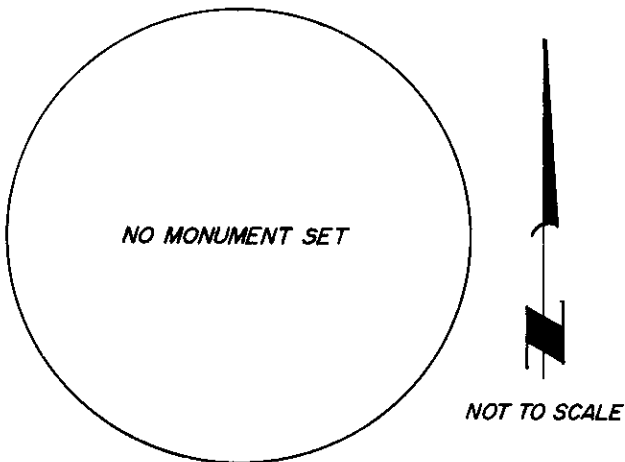
*9" FIR, S63°E, 39.89FT. SCRIBED "API S13 BT" SET BY TAG

*5" FIR, N66°E, 17.15FT. SCRIBED "API S13 BT" SET BY TAG

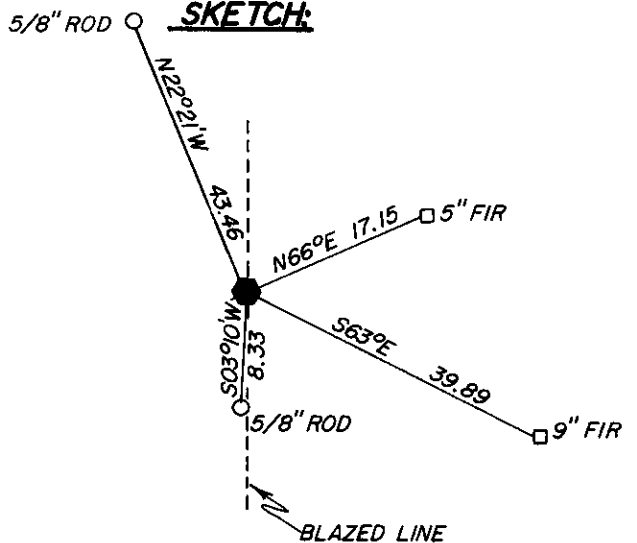
SET 5/8" X 30" IRON ROD WITH PLASTIC CAP (LS1084), S03°10' W, 8.33FT. (SET STEEL POST 0.5' EAST OF ROD)

SET 5/8" X 30" IRON ROD WITH PLASTIC CAP (LS1084), N22°21'W, 43.46FT.

MONUMENT DETAIL:



SKETCH:



NOTES:

BASIS OF BEARINGS IS A SOLAR OBSERVATION.

*SET PK NAIL WITH BENTON COUNTY BRASS WASHER STAMPED "BENTON COUNTY SURVEYOR" IN SIDE CENTER OF BASE OF BT. BT DISTANCES ARE TO SIDE CENTER OF TREE.

FIRM / AGENCY:

PETERSON & ASSOCIATES
8155 NW MITCHEL DRIVE
CORVALLIS, OREGON PHONE: 757-1794

PARTY CHIEF / CREW:

JIM S. PETERSON / DENNIS J. KEPLER

