

137700240

BENTON COUNTY CORNER HISTORY FORM, PAGE 1 OF 1, 137700240H2

DATE 09/23/2016

TOWNSHIP 13 SOUTH, RANGE 7 WEST, WILLAMETTE MERIDIAN; SECTION 25 CORNER EAST 1/4
DONATION LAND CLAIM N/A CORNER N/A

COMMON CORNER(S):

POINT ON WEST LINE OF SECTION 30, TOWNSHIP 13 SOUTH, RANGE 6 WEST

RECORDS (INFORMATION IN BOLD ITALICS IS COUNTY STAFFS' INTERPRETATION OF THE RECORD)

BASED ON EXTENSIVE RESEARCH AND RECOVERY OF EVIDENCE, THIS OFFICE HAS DETERMINED THAT MOST GENERAL LAND OFFICE SURVEYORS IN BENTON COUNTY MEASURED TO THE FACE OF BEARING TREES.

[01] GENERAL LAND OFFICE (GLO) NOTES BY ROBERT O. COLLIER, D.S., DATED FEBRUARY 9, 1892. SET A STONE **10" X 10" X 10"**, 7" IN GROUND MARKED **"1/4"** ON WEST FACE FROM WHICH A MAPLE 24" DIA BEARS N21°E, 28 LINKS (18.48 FEET) MARKED **"1/4S BT"**; A HEMLOCK 6" DIA BEARS S5°W, 21 LINKS (13.86 FEET) MARKED **"1/4S BT"**.

[02] BENTON COUNTY SURVEY NO. 9869 BY JIM S. PETERSON, P.L.S., DATED MARCH, 1992. FOUND ORIGINAL CORNER STONE MARKED **"1/4" ON WEST FACE.**

[03] BENTON COUNTY CORNER RESTORATION FORM NO. 137700240R1 BY JIM S. PETERSON, P.L.S., DATED MARCH 15, 1993. FOUND **12" X 12" X 10"** STONE AT CORNER POSITION. THE STONE WAS IN AN UPRIGHT POSITION AND COVERED WITH A THICK MOSS COATING. IT WAS ALSO HALF BURIED, AND MARKED **"1/4"** ON WEST FACE. FOUND NO TRACE OF ORIGINAL BEARING TREES. SET 2" INSIDE DIAMETER X 30" LONG GALVANIZED IRON PIPE, WITH 2-1/2" BRASS CAP MARKED **"T13S 1/4 R7W R6W S25 LS1084 1993"**, FOR THE CORNER. BURIED STONE ALONGSIDE CAP, WITH MARKS DOWN. SET D. FIR 17" DIA BEARS S26°E, 20.29 FEET TO 6" SPIKE WITH BRASS WASHER STAMPED **"BENTON COUNTY SURVEYOR"** (BCBW) IN SOUTHWEST SIDE CENTER OF TREE, MARKED **"X BT"**; SET D. FIR 16" DIA BEARS S76°W, 14.52 FEET TO 6" SPIKE WITH BCBW IN NORTH SIDE CENTER OF TREE, MARKED **"1/4 S25 BT"**; SET D. FIR 19" DIA BEARS N46°W, 13.09 FEET TO 6" SPIKE WITH BCBW IN SOUTHWEST SIDE CENTER OF TREE, MARKED **"1/4 S25 BT"**; SET D. FIR 20" DIA BEARS N60°E, 9.34 FEET TO 6" SPIKE WITH BCBW IN NORTHWEST SIDE CENTER OF TREE, MARKED **"X BT"**. SET ORANGE FIBERGLASS **"SURVEY MARKER"** POST 1.0 FEET NORTH OF CAP.

[04] BUREAU OF LAND MANAGEMENT (BLM) NOTES BY ROBERT L. AARSETH AND JANET R. MYERS, CADASTRAL SURVEYORS, DATED APRIL 4, 2005. THE 1/4 SECTION CORNER PERPETUATED FROM ORIGINAL EVIDENCE NO LONGER IN EXISTENCE BY JIM S. PETERSON IN 1993, MONUMENTED WITH A GALVANIZED IRON POST, 2" DIA, FIRMLY SET, PROJECTING 3" ABOVE GROUND, WITH BRASS CAP MARKED **"T13S 1/4 R7W R6W S25 LS1084 1993"** FROM WHICH A FIR 21" DIA BEARS N60°E, 9.3 FEET WITH A HEALED BLAZE; A FIR 18" DIA BEARS S26°E, 20.3 FEET WITH A HEALED BLAZE; A FIR 15" DIA BEARS S76°W, 14.5 FEET WITH A HEALED BLAZE; A FIR 21" DIA BEARS N46°W, 13.1 FEET WITH A HEALED BLAZE.

FIRM/AGENCY: BENTON COUNTY SURVEYOR'S OFFICE
ADDRESS: 360 S.W. AVERY AVE., CORVALLIS, OR 97333; PH. 541-766-6821
RESEARCH BY: DAVID L. MALONE, P.L.S.
DATA ENTRY BY: SAME

**BENTON COUNTY CORNER RESTORATION FORM, PAGE 1 OF 1
SEE CORNER HISTORY FORM FOR RECORDS, ETC.**

CORNER RESTORATION FIELD BOOK NO. _____ PAGE _____ DATE 3-15-93
TOWNSHIP 13 SOUTH, RANGE 7 WEST, W.M. SECTION 25 CORNER E1/4
DONATION LAND CLAIM _____ CORNER _____
CONDITION REPORT _____ REFERENCED OUT _____ RENEWED XX SURVEYED IN _____

LOCATION AND COMMENTS

FROM THE JUNCTION OF BLM ROADS 13-6-29 AND 13-7-36.1, DRIVE EASTERLY ON 13-6-29 FOR 0.6 MILES TO K-TAG ON SOUTH SIDE OF ROAD AT STARKER GATE. WALK NORTH 600' TO CORNER. CORNER LIES ON EAST SLOPE, 50' WEST OF CREEK.

MONUMENTS AND ACCESSORIES FOUND (CONDITION AND SOURCE):

FOUND: 12" X 12" X 10" STONE (10" X 10" X 10" AS PER RECORD [1]) AT CORNER POSITION. THE STONE WAS IN AN UPRIGHT POSITION AND COVERED WITH A THICK MOSS COATING. IT WAS ALSO HALF BURIED, AND MARKED "1/4" ON WEST FACE.

FOUND: NO TRACE OF ORIGINAL BT'S

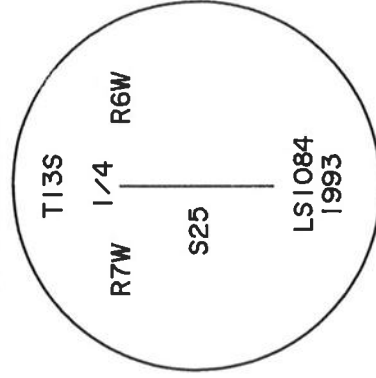
MONUMENT SET (PROCEDURE AND DESCRIPTION):

SET: 2" INSIDE DIAMETER X 30" LONG GALVANIZED IRON PIPE, WITH 2 1/2" BRASS CAP, FOR THE CORNER, STAMPED AS SHOWN. BURIED STONE ALONGSIDE CAP, WITH MARKS DOWN.

NEW ACCESSORIES:

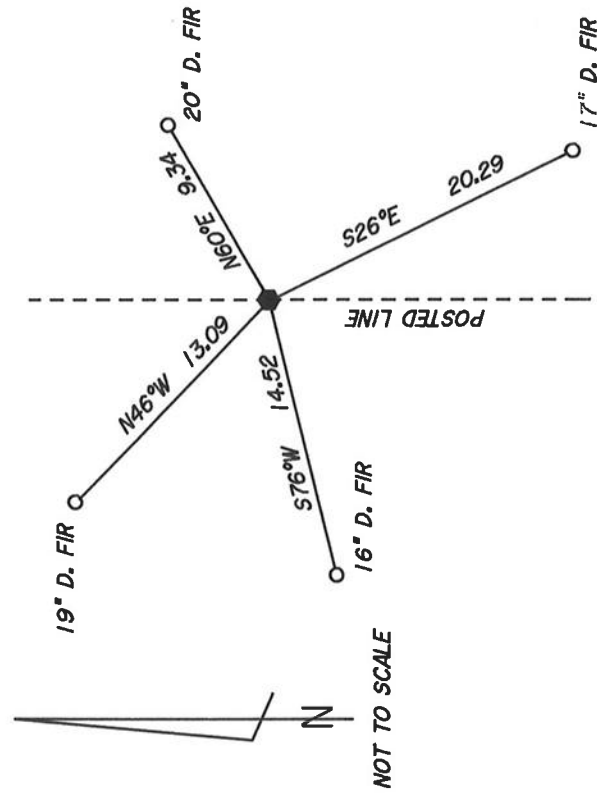
SET: 17" D. FIR, S26°E, 20.29 FT. (TO SPIKE IN SW SIDE) MARKED: "X BT"
SET: 16" D. FIR, S76°W, 14.52 FT. (TO SPIKE IN NORTH SIDE) MARKED: "1/4 S25 BT"
SET: 19" D. FIR, N46°W, 13.09 FT. (TO SPIKE IN SW SIDE) MARKED: "1/4 S25 BT"
SET: 20" D. FIR, N60°E, 9.34 FT. (TO SPIKE IN NW SIDE) MARKED: "X BT"
SET: ORANGE FIBERGLASS "SURVEY MARKER" POST 1.0 FT. NORTH OF CAP

MONUMENT DETAIL



2 1/2" BRASS CAP

SKETCH



NOTES:

BASIS OF BEARINGS IS THE EAST LINE OF SECTION 25 AS PER THE ORIGINAL GLO SURVEY. ALL MEASURED DISTANCES AND BEARINGS ARE TO THE CENTER OF THE OBJECT. ALL NEW BEARING TREES ARE PAINTED (WITH A 6" BAND), HAVE A BT TAG ATTACHED, AND HAVE A BRASS WASHER (STAMPED: "BENTON COUNTY SURVEYOR") ATTACHED WITH A 6" SPIKE TO THE SIDE CENTER OF THE TREE.

FIRM/AGENCY:

PETERSON & ASSOCIATES

ADDRESS:

8155 NW MITCHEL CORVALLIS, OR 97330

SURVEYOR:

JIM S. PETERSON PH. 757-1794

SURVEY CREW:

JOE HINDS

REGISTERED
PROFESSIONAL
LAND SURVEYOR

OREGON
JULY 31, 1976
JIM S. PETERSON
1084

EXPIRES: 12-31-96