

137700440

R. AARSETH / D. NEVIN 1992

3 345

Dependent Resurvey of a Portion of the East Boundary,
T. 13 S., R. 7 W., Willamette Meridian, Oregon

CHAINS	
	A fir stump, 31 ins. diam., bears N. 31° E., 73 lks. dist., with scribe marks S T13 R visible on opened blaze. (Record and to face, 71 lks.)
	A fir stump, 27 ins. diam., bears N. 5° W., 45 lks. dist., no marks visible.
	and bearing trees mkd. by Rinaldi
	A fir, 10 ins. diam., bears N. 18½° E., 28 lks. dist., with chest high, healed blaze.
	A hemlock, 13 ins. diam., bears S. 89° E., 73 lks. dist., with illegible scribe marks visible on partially healed blaze.
	The corner is located at bottom of descent, slopes NE.
	N. 0° 10' 00" W., beginning new measurement.
	Ascend over SE. slope.
2.55	Top of ascent, slopes NE.; desc. over NW. slope.
7.70	Duffy Creek, 6 lks. wide, course N. 50° E.; continue descent over broken NE. slope.
18.95	Enter swamp, edge bears E. and W.
21.05	Leave swamp, edge bears N. 45° E. and W.; continue descent over NE. slope.
34.775	The ¼ sec. cor. of sec. 13 only, monumented with the original sandstone, 20 X 12 X 12 ins. (record, 18 X 10 X 8 ins.), firmly set with top 15 ins. below the surface of the ground, mkd. ¼ on NW. face, from which the remains of the original bearing trees:
	A fir stump, 22 ins. diam., bears S. 31° E., 25¼ lks. dist., with scribe marks ¼ S visible on opened blaze. (Record, 22 lks.)
	A fir shell, 50 ins. diam., bears S. 52° W., 59¼ lks. dist., no marks visible. (Record, 6 lks.)
	At the corner point
	Set a stainless steel post, 28 ins. long, 2¼ ins. diam., 25 ins. in the ground, with brass cap mkd.
	T 13 S R 7 W R 7 W ¼ S 13 1992
	from which new bearing trees
	A fir, 15 ins. diam., bears S. 87¼° W., 12 lks. dist., mkd. ¼ S13 BT.

137700440



R AARSETH / D. NEVIN 1992

346

Dependent Resurvey of a Portion of the East Boundary,
T. 13 S., R. 7 W., Willamette Meridian, Oregon

CHAINS																
	<p>A fir, 16 ins. diam., bears N. 23° W., 23½ lks. dist., mkd. X BT on double blaze.</p> <p>Deposit corner stone alongside and white "DEEP-1" magnetic marker at the base of the stainless steel post.</p> <p>The corner is located in a small swale.</p>															
	<p>N 0° 08' 00" E., beginning new measurement.</p> <p>Descend over NE. slope.</p>															
5.31	<p>Point for the ¼ sec. cor. of sec. 18 only, T. 13 S., R. 6 W., at proportion distance. There is no remaining evidence of the original corner. No permanent monument established.</p> <p>Descend over NE. slope.</p>															
8.35	<p>Enter logged area, edge bears N. and S. 75° E.; thence along E. edge of timber.</p>															
17.95	<p>Old railroad grade, now dirt road, 15 lks. wide, bears E. and W.; also leave logged area, edge bears S. and E.</p>															
19.65	<p>Graveled road, 25 lks. wide, bears N. 40° E. and S. 50° W.</p>															
39.335	<p>The cor. of secs. 12 and 13 only, perpetuated by Bruce Starker, Registered Land Surveyor No. 310, in 1954, and recorded in Benton County, Corner Restoration No. 1891; monumented with the original sandstone, 14 X 12 X 10 ins. (record, 12 X 12 X 8 ins.), loosely set, projecting 10 ins. above ground, mkd. with 4 grooves on S. and 2 grooves on N. faces (alongside of which is an axle with hub, firmly set, projecting 6 ins. above ground), from which the remains of the original bearing trees:</p> <p>A fir stump, 33 ins. diam., bears S. 11° W., 22½ lks. dist., with scribe marks BT visible on opened blaze. (Record and to face, 20 lks.)</p> <p>A fir stump, 36 ins. diam., bears N. 30° W., 6 lks. dist., with scribe marks T13S R7W S12 BT visible on opened blaze. (Record and to face, 3 lks.)</p> <p>At the corner point</p> <p>Set a stainless steel post, 28 ins. long, 2½ ins. diam., 22 ins. in the ground, with brass cap mkd.</p> <div style="text-align: center;"> <table border="0"> <tr> <td></td> <td>T 13 S</td> <td></td> </tr> <tr> <td>R 7 W</td> <td> </td> <td>R 6 W</td> </tr> <tr> <td>S 12</td> <td> </td> <td>S 18</td> </tr> <tr> <td>S 13</td> <td> </td> <td></td> </tr> <tr> <td></td> <td>1992</td> <td></td> </tr> </table> </div> <p>from which new bearing trees</p> <p>A fir, 10 ins. diam., bears S. 48½° W., 35½ lks. dist., mkd. T13S R7W S13 BT.</p>		T 13 S		R 7 W		R 6 W	S 12		S 18	S 13				1992	
	T 13 S															
R 7 W		R 6 W														
S 12		S 18														
S 13																
	1992															

DATE 11/28/2006TOWNSHIP 13 SOUTH, RANGE 07 WEST, WILLAMETTE MERIDIAN; SECTION 13 CORNER EAST 1/4DONATION LAND CLAIM N/A CORNER N/ACOMMON CORNER(S):

NONE

RECORDS (INFORMATION IN BOLD ITALICS IS COUNTY STAFFS' INTERPRETATION OF THE RECORD)

BASED ON EXTENSIVE RESEARCH AND RECOVERY OF EVIDENCE, THIS OFFICE HAS DETERMINED THAT MOST GENERAL LAND OFFICE SURVEYORS MEASURED TO THE FACE OF BEARING TREES.

- [01] GENERAL LAND OFFICE (GLO) NOTES BY R. COLLIER, D.S., DATED FEBRUARY 8, 1892. SET A **18"x10"x8" STONE, 12" IN THE GROUND, MARKED "1/4" ON THE WEST FACE. MARKED AN 18" FIR S31 °E 22 LKS. (14.52 FT.), MARKED "1/4SBT" AND A 40" FIR S52 °W 56 LKS. (36.96 FT.), MARKED "1/4SBT".**
- [02] BUREAU OF LAND MANAGEMENT (BLM) DEPENDENT RESURVEY BY R. AARSETH AND D. NEVIN, CADASTRAL SURVEYOR'S, DATED OCTOBER 27, 1992. FOUND A **20"x12"x12" SANDSTONE, MARKED "1/4" ON THE NORTHWEST FACE. SET A 2 1/2" STAINLESS STEEL POST, 28" LONG, 25" IN THE GROUND WITH A BRASS CAP. FOUND A 22" FIR STUMP (GLO BT) S31 °E 25 1/2 LKS. (16.83 FT.), WITH SCRIBE MARKS "1/4S" VISIBLE ON OPENED BLAZE AND A 50" FIR SHELL (GLO BT) S52 °W 59 1/2 LKS. (39.27 FT.), NO MARKS VISIBLE. MARKED A 15" FIR S87 1/2 °W 12 LKS. (7.92 FT.), MARKED :1/4S13BT" AND A 16" FIR N23 °W 23 1/2 LKS. (15.51 FT.), MARKED "XBT" ON A DOUBLE BLAZE.**

NOTES:

THIS IS A MICROSOFT WORD 2000 DOCUMENT NAMED "37700440" CREATED FROM A BOILER PLATE DOCUMENT NAMED "HISTORY", WHICH HAS A STYLESHEET NAMED "CORNER" ATTACHED TO IT.

FIRM/AGENCY: BENTON COUNTY SURVEYOR'S OFFICE
ADDRESS: 360 S.W. AVERY AVE. CORVALLIS OR 97333; PH. 766-6821
RESEARCH BY: BERNARD S. ALTENBACH, ENGINEER/SURVEY TECH.
DATA ENTRY BY: SAME

137700440

PERPETUATING AND REFERENCING

E 1/4 SEC 13 T 73 S RTW

Found 3 1/4" BRASS CAP ON 2 1/8"

IRON PIPE .3" ABOVE GROUND LEVEL

AS SET BY BLM PER RECORD [027]

FD T 30" D, FIRE STUMP w/US. "1/4 S"

ON UPPER OPEN BLAZE - WE OPENED

LOWER BLAZE TO US. "B" FD T 50"

D. FIRE SHELL NO US. (552W 3696)

FD BLM (BTS: 1) "D. FIRE w/HEALED

BLAZE (587 1/2 W 792') (2) "D. FIRE

w/HEALED BLAZE (N23 W 1551')

HELD BLM PIPE & CAP FOR COR.

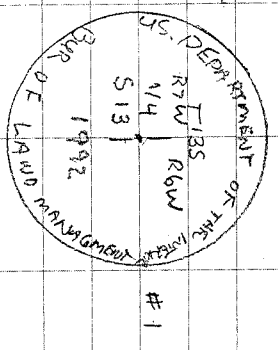
POSITION & SET NEW REF'S AS

SHOWN. SET 6' ORANGE CARRIAGE

"SURVEY MARKER" POST 5' S OF BLM

MON.

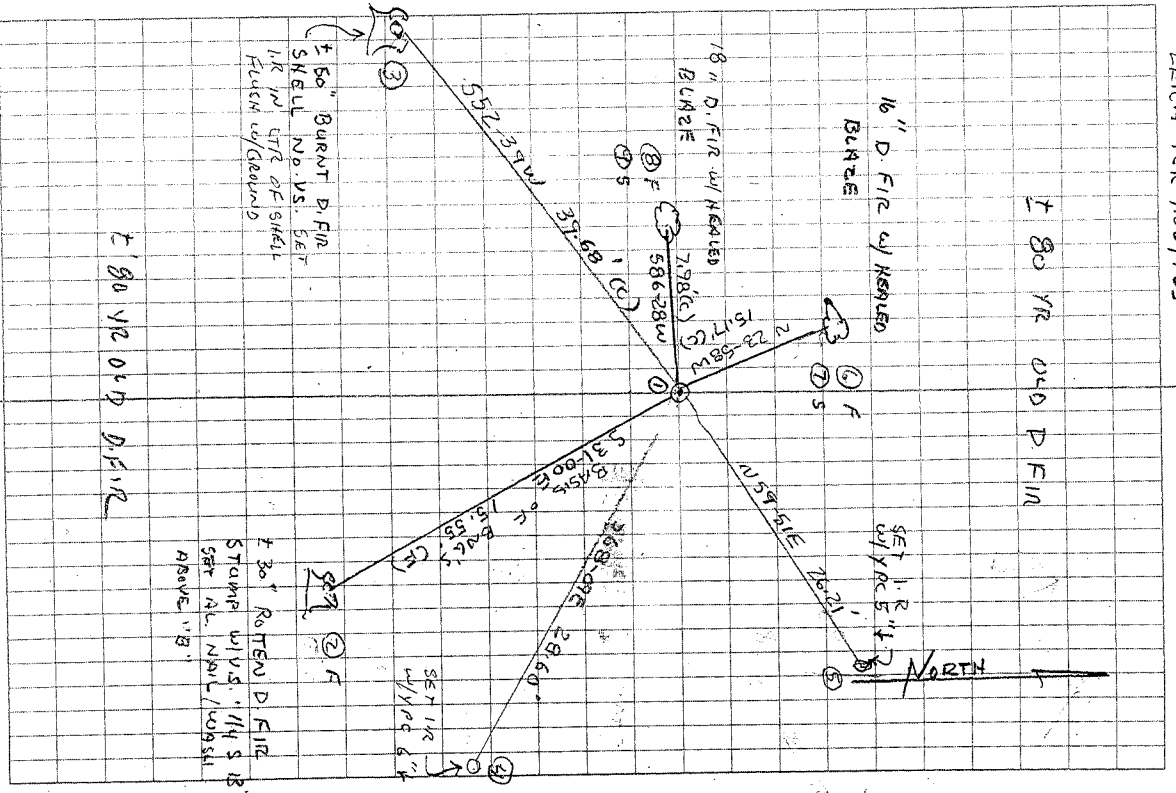
COR LOC. IN SMALL DRAW



3 1/4" BRASS CAP

CUDY, COOL, SHOWERS
38° E 296' H
LEICA TR 1105/TDS

12/21/06
D. DEAN
B. ALTENBACH
24/75



T 80 NR OLD D.FIN

T 80 NR OLD D.FIN

16" BURNT D. FIRE SHELL NO. US. SET 1/4" W/ SIDE OF SHELL FLUSH w/ GROUND

T 30" ROTTED D. FIRE STUMP w/ V.S. "1/4 S E" SET AL. NAIL/WOODS AS ABOVE "B"

SET 1/4" w/ YP 6"

BENTON COUNTY CORNER RESTORATION FORM, PAGE 1 OF 2, 137700440R1

SEE CORNER HISTORY FORM FOR RECORDS ETC.

CORNER RESTORATION FIELD BOOK NUMBER 24 PAGE(S) 75 DATE 12/21/2006
TOWNSHIP 13 SOUTH, RANGE 7 WEST, WILLAMETTE MERIDIAN; SECTION 13 CORNER EAST 1/4
DONATION LAND CLAIM NONE CORNER N/A
CONDITION REPORT ; REFERENCED OUT XX; RENEWED ; SURVEYED IN

LOCATION AND COMMENTS:

CORNER IS LOCATED IN A ±80 YEAR OLD STAND OF D. FIR TIMBER ON A GENTLE FACING NORTH SLOPE IN A SMALL DRAW. TO REACH CORNER FROM THE JUNCTIONN OF HIGHWAY 34 AND BOTKIN ROAD, TRAVEL SOUTHERLY ON BOTKIN ROAD FOR 0.51 MILES TO END OF PAVEMENT; THEN CONTINUE SOUTHERLY ON GRAVEL ROAD (STAYING ON MAIN GRAVEL ROAD) FOR 2.37 MILES TO LOCKED STARKER FOREST GATE; THEN PASS THROUGH GATE FOR 0.03 MILES TO "Y" JUNCTION; THEN BEAR LEFT (STAYING ON MAIN GRAVEL ROAD) FOR 0.09 MILES TO A 4 WAY JUNCTION; THEN BEAR RIGHT ONTO THE MOST EASTERLY SPUR ROAD FOR 0.37 MILES TO A "Y" JUNCTION; THEN BEAR RIGHT FOR 0.13 MILES AND PARK ON WESTERLY SIDE OF ROAD AT SKID ROAD BEARING WESTERLY; THEN WALK WESTERLY ON SKID ROAD FOR ±1000 FEET TO JUNCTION WITH ATV TRAIL; THEN SOUTHWESTERLY ON ATV TRAIL FOR 150 FEET TO LOCATION TAG ON A 24" D. FIR APPROXIMATELY 15 FEET SOUTHERLY OF ATV TRAIL; THEN SOUTH 180 FEET TO CORNER. CORNER IS POOR FOR PREMARKING AND GPS CONTROL.

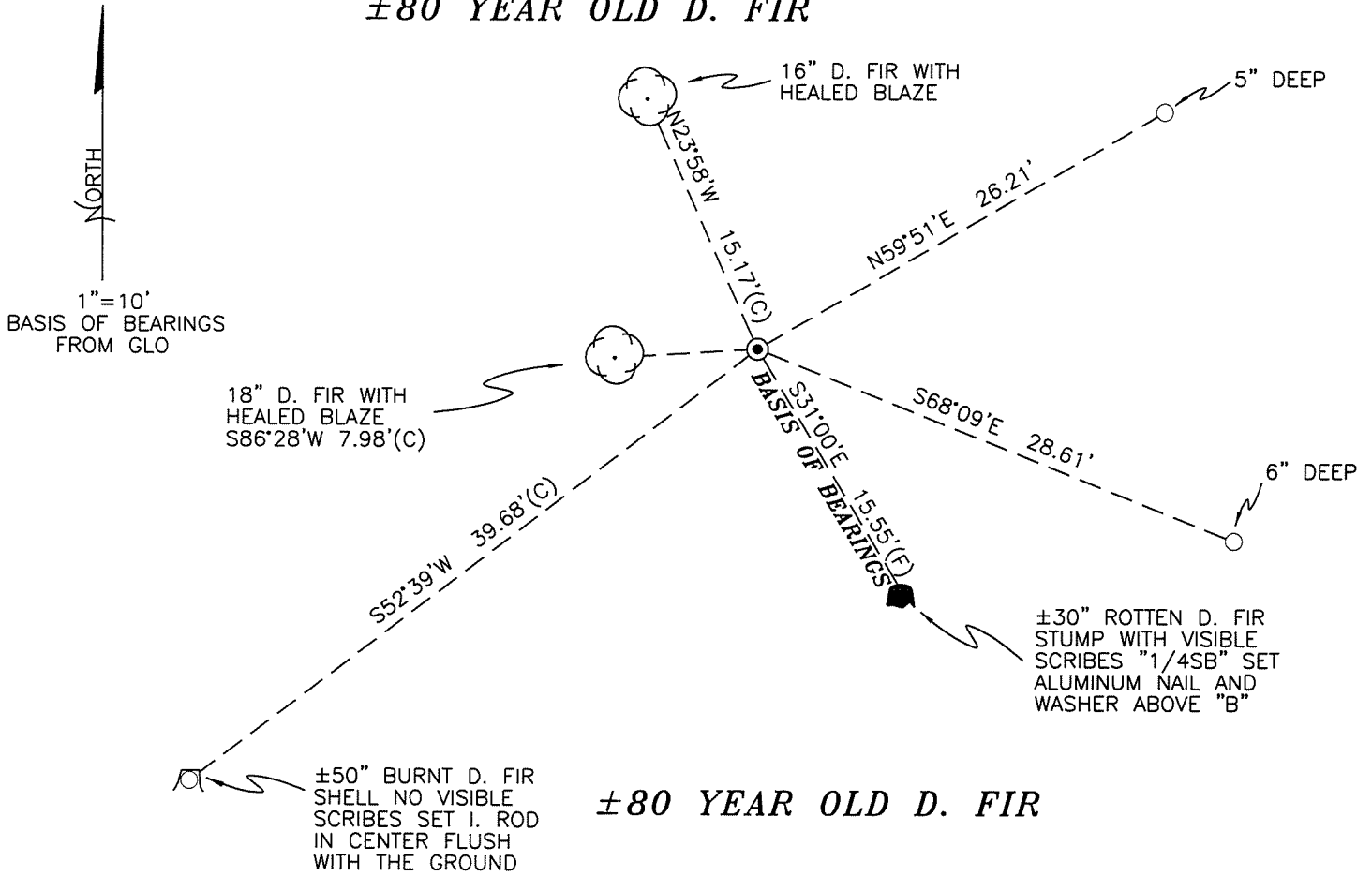
MONUMENTS AND ACCESSORIES FOUND (CONDITION AND SOURCE):

1. FOUND 3 1/4" BRASS CAP ON 2 1/2" IRON PIPE, 3" ABOVE GROUND LEVEL AND MARKED AS SHOWN ON PAGE 2 OF 2 FOR CORNER POSITION.
(SET 2 1/2" STAINLESS STEEL POST, 28" LONG, 25" IN GROUND WITH BRASS CAP PER RECORD [02]).
2. FOUND ±30" ROTTEN D. FIR STUMP, S31°00'E, 15.55 FEET TO ORIGINAL FACE. FOUND VISIBLE SCRIBING "1/4 S" ON OPEN UPPER BLAZE. WE OPENED LOWER BLAZE TO VISIBLE SCRIBING "B". SET ALUMINUM NAIL AND PLASTIC WASHER IN LOWER BLAZE ABOVE THE "B" FOR DISTANCE AND ANGLE MEASUREMENT. **BASIS OF BEARINGS FOR THIS RESTORATION.**
(MARKED AN 18" FIR, S31°E, 16.83 FEET PER RECORD [01]).
(FOUND 22" FIR STUMP WITH VISIBLE SCRIBING "1/4 S" ON OPEN FACE, S31°E, 16.83 FEET PER RECORD [02]).
3. FOUND ±60" D. FIR SHELL STUMP. SET REBAR (SEE LEGEND ON PAGE 2 OF 2) IN APPROXIMATE CENTER, FLUSH WITH GROUND LEVEL.
(MARKED A 40" FIR, S52°W, 36.96 FEET PER RECORD [01]).
FOUND 50" FIR SHELL, S52°W, 39.27 FEET PER RECORD [02]).
4. FOUND 16" D. FIR WITH HEALED BLAZE, N23°58'W, 15.17 FEET TO CENTER. SET ALUMINUM NAIL AND PLASTIC WASHER IN WESTERLY BASE FOR DISTANCE MEASUREMENT.
(MARKED A 16" FIR "X BT" ON DOUBLE BLAZE, N23°W, 15.51 FEET PER RECORD [02]).
5. FOUND 18" D. FIR WITH HEALED DOUBLE BLAZE, S86°28'W, 7.98 FEET TO CENTER. SET ALUMINUM NAIL AND PLASTIC WASHER IN NORTHERLY BASE FOR DISTANCE MEASUREMENT.
(MARKED 15" FIR "1/4S13BT", ON DOUBLE BLAZE, S87 1/2°W, 7.92 FEET PER RECORD [02]).

MONUMENT SET (PROCEDURES AND DESCRIPTION):

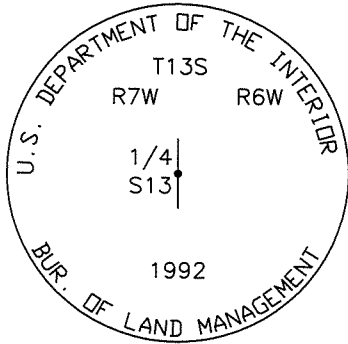
THE 1992 BLM SURVEY (RECORD [02]) FOUND THE ORIGINAL STONE SET PER RECORD [01], "FIRMLY SET" FOR CORNER POSITION. ORIGINAL STONE WAS REPLACED WITH A STANDARD BLM IRON PIPE AND BRASS CAP. WE HELD THE BLM MONUMNET FOR CORNER POSITION AND SET ADDITIONAL REFERENCES AS NOTED ON PAGE 2 OF 2. SET 6 FOOT ORANGE "SURVEY MARKER" POST 0.5 FEET SOUTH OF CORNER MONUMENT.

±80 YEAR OLD D. FIR



±80 YEAR OLD D. FIR

MONUMENT DETAIL



3 1/4" BRASS DISK

LEGEND

- SET 5/8" X 30" REBAR WITH YELLOW PLASTIC CAP MKD "BENTON COUNTY SURVEYOR"
- (F) MEASUREMENT TO FACE
- (C) MEASUREMENT TO CENTER
- GOVERNMENT MONUMENT FOUND AS SHOWN
- ⊙ BEARING TREE AS NOTED
- GLO GENERAL LAND OFFICE
- BEARING TREE STUMP AS NOTED
- ⊖ STUMP SHELL WITH I. ROD IN CENTER

NEW ACCESSORIES:

1. SET REBAR (SEE LEGEND) 5" BELOW GROUND LEVEL N59°51'E, 26.21 FEET.
2. SET REBAR (SEE LEGEND) 6" BELOW GROUND LEVEL S68°09'E, 28.61 FEET.
3. SET REBAR (SEE LEGEND) IN CENTER OF A ±50" BURNT D. FIR SHELL, FLUSH WITH THE GROUND, S52°39'W, 39.68 FEET.

NOTES:

COMPASS DECLINATION IS 20° EAST. ALL MEASURED DISTANCES AND BEARINGS ARE TO THE CENTER OF THE OBJECT, UNLESS OTHERWISE NOTED. ALL BEARING TREES ARE PAINTED AND HAVE A B.T. TAG ATTACHED, FACING THE CORNER UNLESS OTHERWISE NOTED. ALL NEW BEARING TREES HAVE A PLASTIC WASHER (STAMPED "BENTON COUNTY SURVEYOR CORNER RESTORATION") ATTACHED (BY ALUMINUM NAIL) TO THE FACE, BELOW THE "BT" FOR DISTANCE AND ANGLE MEASUREMENT UNLESS OTHERWISE NOTED. THE DRAWING IS FROM AUTOCAD RELEASE 2006.

THIS RESTORATION WAS PERFORMED AT THE DIRECTION AND APPROVAL OF THE BENTON COUNTY SURVEYOR. RW

FIRM/AGENCY: BENTON COUNTY SURVEYOR'S OFFICE
 ADDRESS: 360 S.W. AVERY AVE. CORVALLIS OR 97333; PH. 766-6821
 PRESENT: DAVID M. DEAN, P.L.S. AND BERNIE ALTENBACH, SURVEY TECH.
 EQUIPMENT: LEICA TCR 1105 WITH TDS ON BOARD

1/2/07 *David M. Dean*

REGISTERED
PROFESSIONAL
LAND SURVEYOR

OREGON
JULY 13, 1984
DAVID M. DEAN
2090

RENEWAL DATE: 12/31/07