

CORNER FILE TRACKING

H:\Survey\Corners\Misc\Filetrac.doc

11/23/98

CORNER NUMBER

137838030

STEP	HISTORY()	RESTORATION()
Form Prepared, DB	3/14/02	5/6/02
Field Inspection, DB	5/1/02	5/1/02
Form Checked, DB	5/22/02	5/22/02
Form Edited, DB	5/24/02	5/24/02
Form Signed, DB	5/24/02	5/24/02
Authorize Payment, DB	—	—
Archive Digital Files	5/24/02	5/24/02
Collect Documents	5/29/02	5/29/02
Scanned	12/12/02	12/12/02
Copy For Filming	5/29/02	5/29/02
Filed, DB		
Finish index (count unit)		
Filmed (Archived), DB		

(DB) = Entry needed in database (Access).

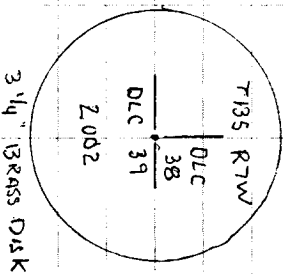
COMMENTS:

Cor. No. 137838030

REMONUMENTING SW COR THOMAS HAYDON
DLC # 38 T135, RTW

FD 1/2" x 3" x 19" 1/2" SHAPED IRON BAR 2" BELOW
GROUND LEVEL AS SET IN C.S. 327. FD
C.S. BT PER C.S. 327, NOW 23" W OAK
W/NERVED FACE, NAIL AND BRASS WASH.
IN NE BASE PER REST 3561. AGREEWG
WELL WITH IRON BAR. FD ± 6" ROTTEN
D. FIRE STAMP GLO BT. OPENED TO VS. "BT"
± NOTCH SET BK ± BRASS WASH IN STMP BELOW NOTCH
N5-37-45W, 274.43' (NS'W 273.24 PER GLO)
HELD CTR OF IRON BAR AS TRUE COR.
REMOVED 1 BAR AND SET 2" x 3/8" 6.I.P.
W/ 3/4" BRASS DISK CEMENTED IN THE
TOP, 2" ABOVE GROUND LEVEL, MKD
AS SHOWN. RESET 1 BAR ON S SIDE
OF NEW MON. IN HORZ. POSITION, 10"
BELOW GROUND LEVEL.

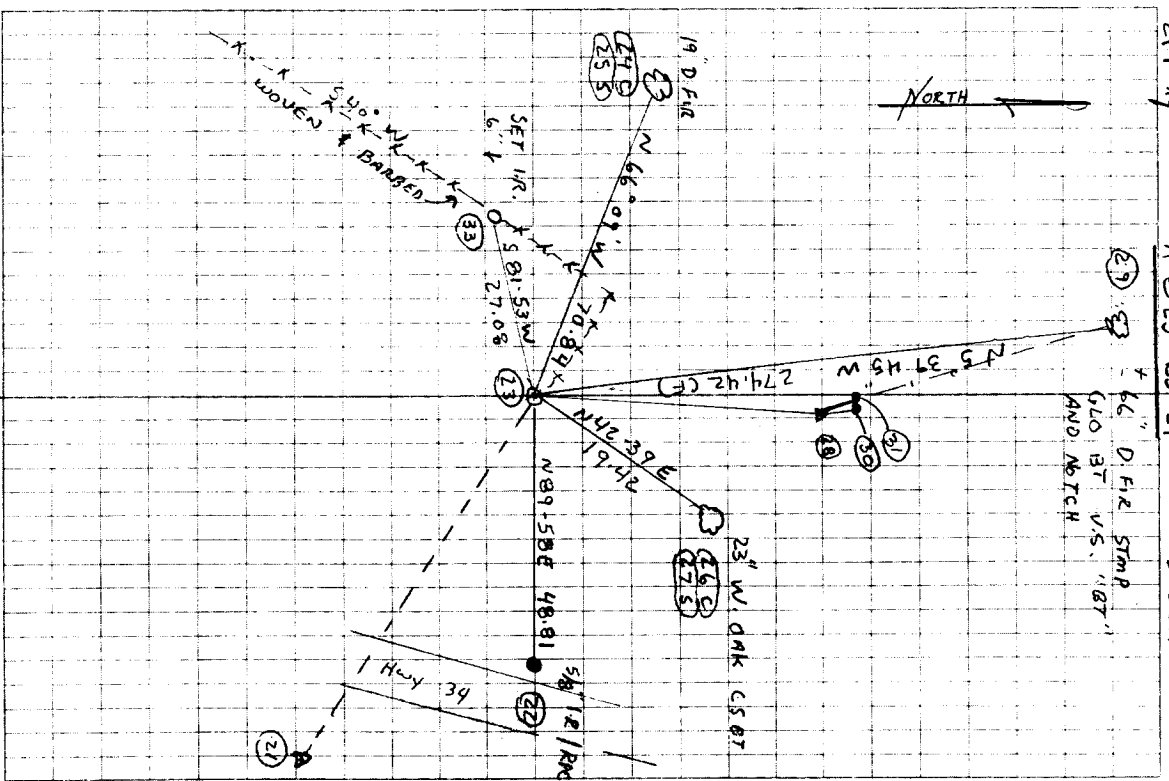
POST 1' E



LEICA TCR 1105
TDS ON BOARD
60°F
29.9" Hg

FILE: 37838050.crs

5/1/02
CLD'y, MLD
D. DEAN



TRAV TO SW COR DICT 38 13-7

(CONTROL FROM Pg H6 THIS BK)

27) W/LY SIDE CTR 23" W. OAK

27 (F)
SS

26) CENTER FACE OF 23" W. OAK COR
W/ HEADED FACE & SPIKE/BONDS W/MSH
IN W/LY BASE

26 (C)
SS

25) SIDE OF 19" D.I.F. (FOR DIST)

21-23-24 (F)
SS

24) ^{FACE} FD 19" D.I.F. W/ HEADED FACE
PER REST * SET ALUM NAIL
AND PLASTIC WASHER IN SW COR

4-21-23

22) 3/4" GRASS DISK ON 2" GIP
AT L. D.C. 38-13-7 (SEE Pg 51)

4-21-22
SS

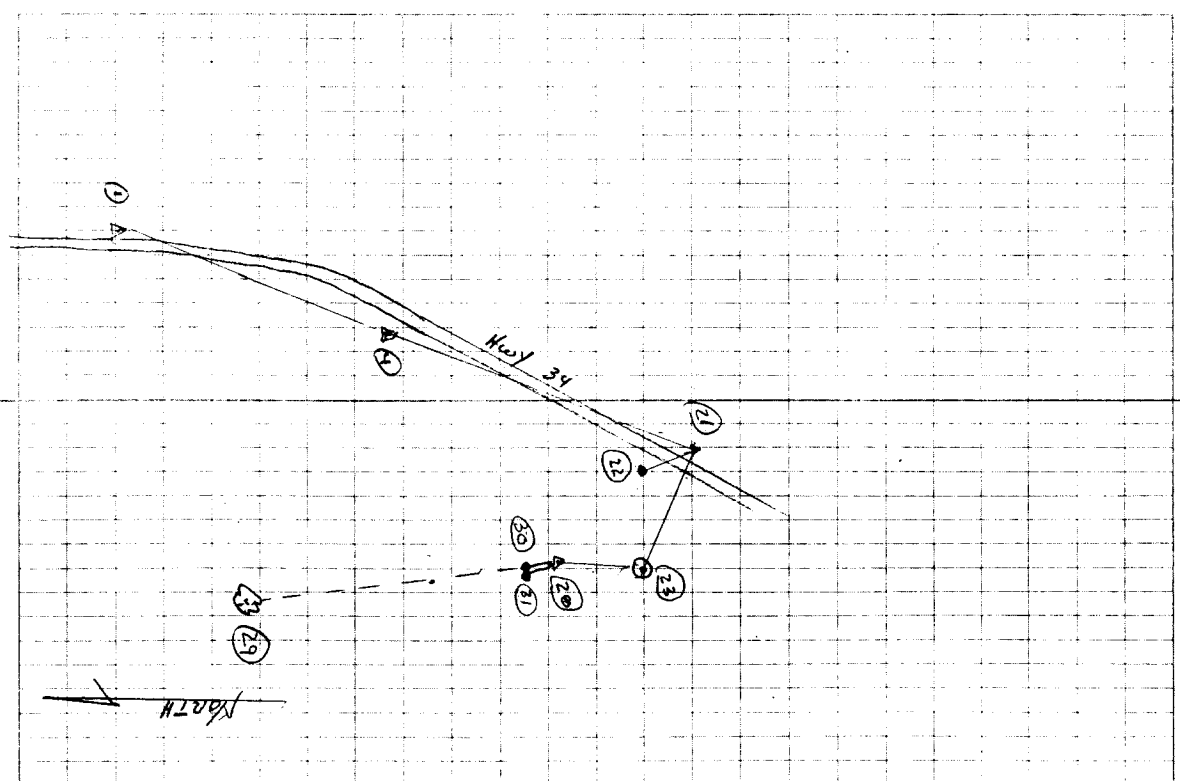
22) FD 5/8" I.R. W/RPC N * 1" ↓

21) SET SPIKE ± 8' E OF E EDGE
OF AC - Hwy 34

4) FD SPIKE (PG 46)

1) FD SPIKE (R. 46)

1-4-21



SS
21-23-33

33) SET 5/8" x 30" IR w/ YPC
6" DEEP #05 FLY OF
BOWEN # 800 FC ANG N40SE/S40W

SS
23-28-32

32) FD 3/4" G.I.P. UP 4"

SS
23-28-31

31) FD 1" I.P. w/ RPC-N*
FLUSH

SS
23-28-30

30) FD 5/8" IR w/ RPC-N*
UP 2"

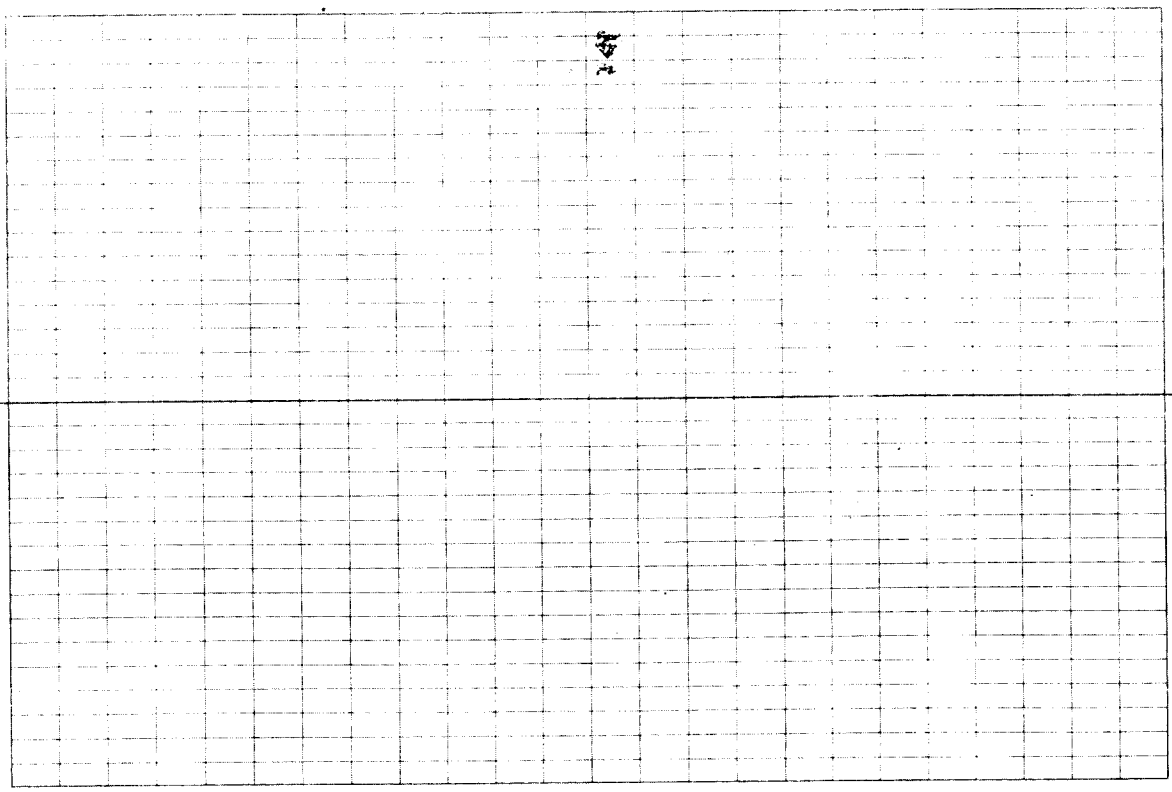
4-2

SS
23-28-29

29) FD 1/2" O FIRE STMP 6LO 8T
OPENED TO VS "BT" & NOTCH
SET PK & PLASTIC WASH @ BLAZE

1-
21-23-28

28) SET SPIKE 3" ↓



C.S. 162 S.W. cor. to sec. 29, 30, 31 & 32 Tp. 12S. TR. 6 W. For A
 Set $1\frac{1}{2}$ " pipe orig. cor.
 Fir 10" in dia. bears N. 43° E. 2.19 ch. stump std.
 " 30" " " " S. 3° E. 42 " " "
 " 20" " " " S. 60° W. .71 " " "
 " 18" " " " N. 18° W. .48 " " "

Witnesses J.C. Pritchett, J. Gray June 6, 1912.

Road c.s. S.W. cor. of Mark Cahoon's D.L.C. #58 Tp. 10 S. Tr. 4 W.
 Stone 8" x 8" x 12" (oak 12" N. 25° E. 4.77 std.)
 Oak 10" N. 37° 40' E. 1.055 ch.
 " 12" S. 80° E. 3.20 " std.

Witnesses J. C. Johnson & B.W. Harris June 14, 1912.

" " N.E. cor. of T.M. Reed's D.L.C. #57 Tp. 10-4.
 Set $\frac{1}{4}$ " x $\frac{1}{4}$ " iron bar
 Witnesses J.C. Johnson B.W. Harris & C.A. Hefson June 14, 1912.

Road #301 S.W. cor. of Thos. Hayden's D.L.C. #38 Tp. 13-7
 Set a $\frac{1}{2}$ " x 3" bar of iron (oak dammer) orig. cor.
 Oak 16" in dia. bears N. 42° 30' E. 2.94 ch.
 Fir 36" " " N. 5° W. 4.14 "
 Witnesses F. & T. Fullerton, M. Hayden & John Stipro, June 18, 1912.

Road #302 N.W. cor. of Amos B. Bakerly D.L.C. #63 Tp. 11 S. TR. 6 W.
 Set a bar of iron (chisel)
 Fir 9" in dia. bears N. 31° 45' E. 1.58 ch.
 " 9" " " S. 60° 45' E. 2.59 "
 Oak 6" " " N. 69° W. 1.58 "

Witnesses W.H. Ellenburgh J.H. & A.C. Johnson & C.E. Jackson June 25, 1912.

" " N.E. cor. of Amos B. Bakerly D.L.C. #63 Tp. 11 S. TR. 6 W.
 Set $\frac{3}{4}$ " x $2\frac{1}{4}$ " bar of iron
 Oak 10" in dia. bears S. 11° E. .23 std.
 " 10" 5" " " S. 76° W. .95 "
 " 10" H. " " N. 54° 30' W. .52 "

Witnesses W.H. Ellenburgh J.H. & A.C. Johnson June 25, 1912.

" " N.W. cor. of Eli Summers' D.L.C. #67 Tp. 11-6
 Set a stone 8" x 8" x 12" S.E. stump std.
 Oak 16" S 39° E. 2.65 stump std.
 " 20" in dia bears S 37° W. 1.13 ch. std. not std.
 Maple 20" " " S. 70° W. 1.31 " " "

Witnesses W.H. Ellenburgh J.H. & A.C. Johnson & C.E. Jackson June 26, 1912.

Southwest corner of Thomas Hayden's DLC 38, Twp 13-7

2110

Reestablishment by W. C. Galloway

June 19, 1912

Set a $\frac{1}{2}$ " x 3" bar of iron (Oak down) Original corner
Oak 16" in diam bears N. 42° 30' E .294 chains
Fir 36" in diam bears N. 5° W 4.14 chains

Witnesses F. and R. Fullerton, M. Hayden, and John Stefro

OREGON CORNER RESTORATION FORM

Section 31 & 32 Township 13 S Range 7 W

County Benton Date 12-8-88

CORNER DESIGNATION

SW Corner Thomas Hayden
D.L.C. No 38

- Condition Report Only
- Not Found
- Renewed
- Unrecorded
- Surveyed In
- Referenced Out

Previous Renewals/Surveys, etc. _____

Johnston, CS6803, 1978

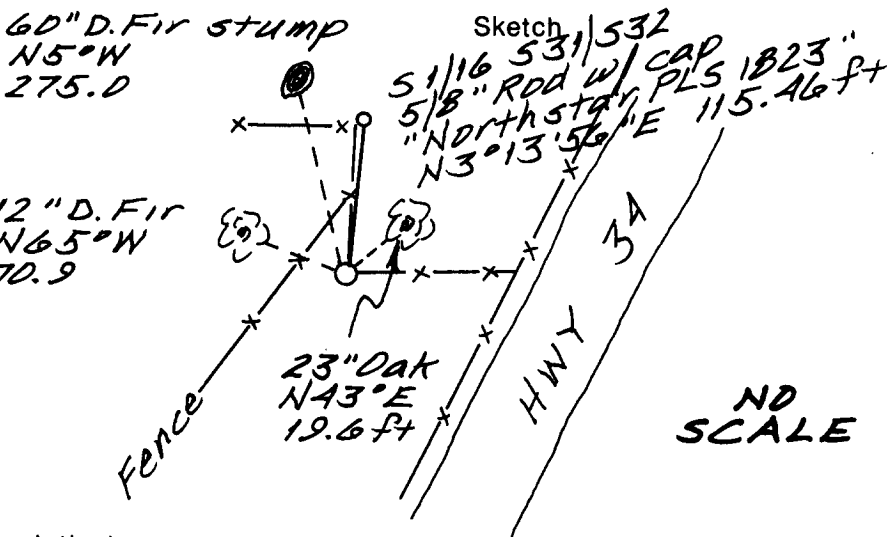
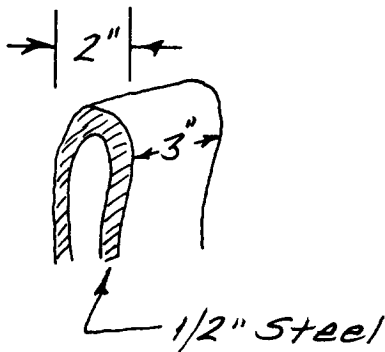
Monument(s) & Accessories Found: (Condition and Source)

Found 2" X 3" Bar (see below) 3" underground at a fence corner fences going North and East.

A 23" Oak bears N 43° E 19.6 ft. (N 42° 30' E .294 ch.) to a BCBW set at side-center rescribed "SWCL 38" above "BT"

A 60" Douglas Fir stump (badly rotted) bears N 5°W 275.0 ft. (N 5° W 4.14ch) Oak to NE gone due to highway R/W.

Monument Detail



Monument Set (Procedures and Description)

Not replaced

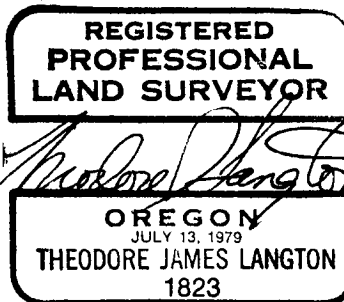
New Accessories A 12" Douglas Fir Bears N 65° W 70.9 ft. to a BCBW set in side center scribed "SWCL 38" above "BT" An orange fiberglass post placed East 0.9 ft. A white PVC pipe placed N 30° E 0.5 ft.

Location & Comments

Corner lies at the NE edge of a narrow field ± 1000 ft. N'ly from the intersection of Honey Grove Road and Hwy. 34.

Compass Declination 20° E
Firm/Agency Northstar Surveying, Inc.
Address 402 N.W. 5th St. Corvallis, Oregon 97330

Surveyor's Seal



Party Chief Robert Cook
BCBW is Benton County
Notes Bass washer
Witness Bill Fauer

DATE 03/14/2002TOWNSHIP 13 SOUTH, RANGE 07 WEST, WILLAMETTE MERIDIAN; SECTION 32 CORNER NONE
DONATION LAND CLAIM THOMAS HAYDON NO. 38 CORNER SW**COMMON CORNER(S):**

POINT ON NORTH LINE OF THE JOCOB HOLGATE DLC 39

RECORDS (INFORMATION IN *BOLD ITALICS* IS COUNTY STAFFS' INTERPRETATION OF THE RECORD)

BASED ON EXTENSIVE RESEARCH AND RECOVERY OF EVIDENCE, THIS OFFICE HAS DETERMINED THAT MOST GENERAL LAND OFFICE SURVEYORS MEASURED TO THE FACE OF BEARING TREES.

- [01] GENERAL LAND OFFICE (GLO) NOTES OF THE THOMAS HAYDON DONATION LAND CLAIM (DLC) NO. 38 BY DENNIS HATHORN, D.S., DATED APRIL – JULY 1856. *SET POST WITH TWO BEARING TREES.*
- [02] COUNTY SURVEY NO. 327 (OLD COUNTY ROAD NO. 301) BY W. C. GALLOWAY, D.C.S., DATED JUNE 18, 1912. *SET 3" X 1/2" BAR OF IRON. FOUND 1 GLO BEARING TREE STANDING AND MADE ONE NEW COUNTY SURVEYOR BEARING TREE.*
- [03] CORNER RESTORATION BOOK 1, PAGE 38 BY W. C. GALLOWAY, D.C.S., DATED JUNE 19, 1912. *SET A 1/2" X 3" BAR OF IRON. FOUND GLO BEARING TREES, ONE DOWN AND ONE STANDING. MADE ONE NEW COUNTY SURVEYOR BEARING TREE.*
- [04] CORNER RESTORATION NO. 2110. *TRANSCRIBED FROM RECORD [03] AND MAY CONTAIN ERRORS AND/OR OMISSIONS.*
- [05] BENTON COUNTY MAP NO. 14-7-00002 BY W. C. GALLOWAY, C.S., DATED OCTOBER 21, 1916. *1/2" X 3" IRON BAR WITH ONE GLO AND ONE COUNTY SURVEYOR BEARING TREE.*
- [06] HIGHWAY 34 ROUTE 4 LOCATED LINE ALSEA – ALSEA MT'N SECTION OF ROAD NO. 520 BY BENTON COUNTY, NO DATE GIVEN. *1/2" X 3" BAR*
- [07] BENTON COUNTY MAY NO. 13-7-00003 BY BENTON COUNTY, NO DATE GIVEN. *MONUMENT NOT DESCRIBED.*
- [08] COUNTY SURVEY NO. 1146 (OLD NO. 108) NOTES (FIELD BOOK 74, PAGE 2) BY W. W. LARSEN, D.C.S., DATED NOVEMBER 6-8, 1930. *IRON BAR WITH 2 BEARING TREES, COPIED FROM OTHER RECORDS.*
- [09] COUNTY SURVEY NO. 6803 BY GARY JOHNSTON, P.L.S., DATED OCTOBER 1978. *FOUND 1" X 3" IRON BAR.*
- [10] CORNER RESTORATION NO. 3561 BY THEODORE LANGTON, P.L.S., DATED DECEMBER 8, 1988. *FOUND 2" X 3" BAR. FOUND COUNTY SURVEYOR BEARING TREE, RESCRIBED AND SET BRASS WASHER IN SIDE CENTER. FOUND STUMP OF FIR GLO BEARING TREE. MADE ONE NEW D. FIR BEARING TREE.*
- [11] COUNTY SURVEY NO. 8211 BY THEODORE LANGTON, P.L.S., DATED DECEMBER 1988. *FOUND 2" X 3" "U" BAR PER RESTORATION NO. 3561.*
- [12] COUNTY SURVEY NO. 8257 BY THEODORE LANGTON, P.L.S., DATED APRIL 3, 1989. *FOUND 2" X 3" "U" BAR PER RESTORATION NO. 3561.*
- [13] COUNTY SURVEY NO. 8561 BY THEODORE LANGTON, P.L.S., DATED OCTOBER 15, 1991. *FOUND 3" X 1/2" BAR WITH 2" WIDE LOOP ON TOP.*

NOTES:

THIS IS A MICROSOFT WORD 2000 DOCUMENT NAMED "37838030" CREATED FROM A BOILER PLATE DOCUMENT NAMED "HISTORY", WHICH HAS A STYLESHEET NAMED "CORNER" ATTACHED TO IT.

FIRM/AGENCY: BENTON COUNTY SURVEYOR'S OFFICE
ADDRESS: 360 S.W. AVERY AVE. CORVALLIS OR 97333; PH. 766-6821
RESEARCH BY: DAVID M. DEAN, P.L.S.
DATA ENTRY BY: DEAN

BENTON COUNTY CORNER RESTORATION FORM, PAGE 1 OF 2, 137838030R2**SEE CORNER HISTORY FORM FOR RECORDS ETC.**

CORNER RESTORATION FIELD BOOK NUMBER 20 PAGE(S) 52 - 54 DATE 5/01/2002
TOWNSHIP 13 SOUTH, RANGE 7 WEST, WILLAMETTE MERIDIAN; SECTION 31 CORNER NONE
DONATION LAND CLAIM THOMAS HAYDON NO. 38 CORNER SOUTHWEST
CONDITION REPORT _____; REFERENCED OUT _____; RENEWED XX; SURVEYED IN _____

LOCATION AND COMMENTS:

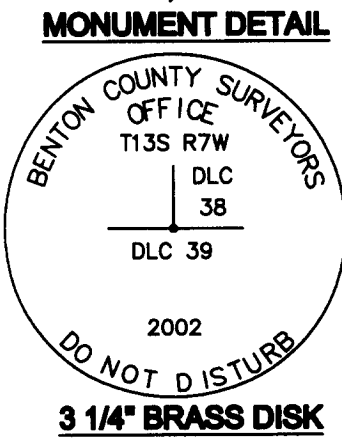
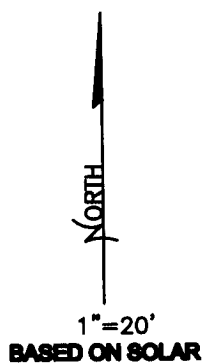
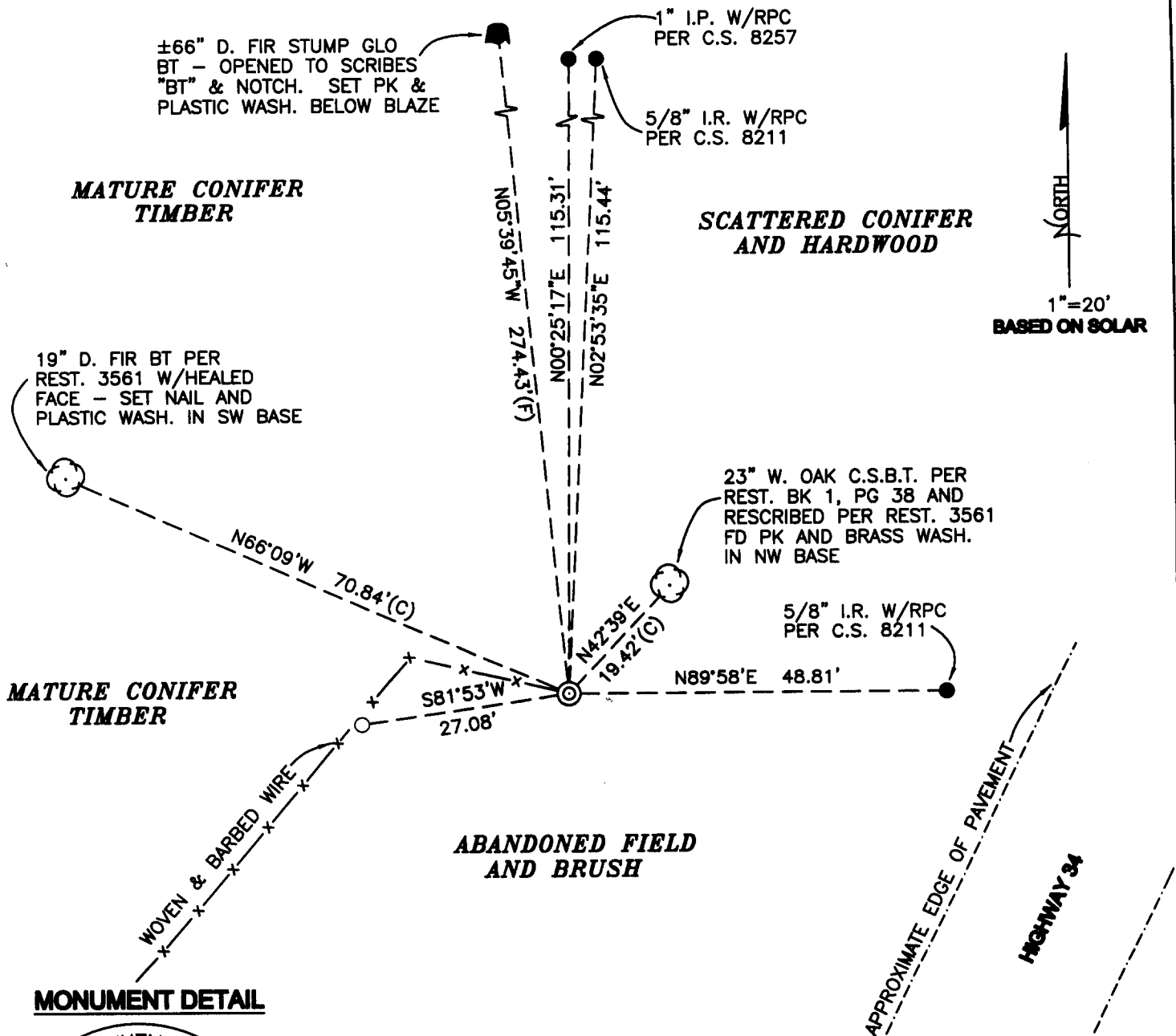
CORNER IS LOCATED IN THE NORTHEASTERLY CORNER OF AN ABANDONED FIELD, APPROXIMATELY 60 FEET WEST OF HIGHWAY 34. TO REACH CORNER FROM THE JUNCTION OF HIGHWAY 34 AND HONEYGROVE ROAD, TRAVEL NORTHEASTERLY ON HIGHWAY 34 FOR 0.20 MILES AND PARK; THEN NORTHWESTERLY FOR ±90 FEET TO CORNER. CORNER IS OK FOR PREMARKING AND GPS CONTROL.

MONUMENTS AND ACCESSORIES FOUND (CONDITION AND SOURCE):

1. FOUND 1/2" X 3" X 19", "∩" SHAPED IRON BAR, 2" BELOW GROUND LEVEL FOR THE CORNER.
(SET 3" X 1/2" BAR OF IRON PER RECORD [02], [03], [05] AND [06]).
(1" X 3" IRON BAR PER RECORD [09]).
(2" X 3" BAR FORMED FROM 1/2" THICK STEEL PER RECORD [10]).
(2" X 3" "U" BAR PER RECORD [11] AND [12]).
(3" X 1/2" BAR WITH 2" WIDE LOOP ON TOP PER RECORD [13]).
2. FOUND ±66" D. FIR STUMP WHICH WE CUT OPEN TO VISIBLE SCRIBING "BT" AND NOTCH, N5°39'45"W, 274.43 FEET. SET PK NAIL AND PLASTIC WASHER IN STUMP BELOW NOTCH FOR DISTANCE AND ANGLE MEASUREMENT.
(36" FIR, N5°W, 273.24 FEET PER RECORD [01] - [03] AND [05]).
(60" D. FIR STUMP, N5°W, 275.0 FEET PER RECORD [10]).
3. FOUND 23" W. OAK WITH A HEALED FACE, NAIL AND BRASS WASHER IN THE NORTHWEST BASE, N42°39'E, 19.42 FEET. BEARING IS TO CENTER OF TREE AND DISTANCE IS TO SAID NAIL IN BASE.
(16" OAK, N42°30'E, 19.40 FEET PER RECORDS [02], [03] AND [05]).
(23" OAK, N43°E, 19.6 FEET TO A BENTON COUNTY BRASS WASHER SET AT SIDE-CENTER, RESCRIBED "SWCL 38 BT" PER RECORD [10]).
4. FOUND 19" D. FIR WITH A HEALED FACE, N66°09'W, 70.84 FEET TO CENTER. SET ALUMINUM NAIL AND PLASTIC WASHER IN SOUTHWEST BASE FOR DISTANCE MEASUREMENT.
(12" D. FIR, N65°W, 70.9 FEET TO A BENTON COUNTY BRASS WASHER SET IN SIDE CENTER. SCRIBED "SWCL 38 BT" PER RECORD [10]).
5. FOUND 1" IRON PIPE WITH RED PLASTIC CAP STAMPED "NORTHSTAR PLS 1823", FLUSH WITH GROUND, N0°25'17"E, 115.31 FEET.
(SET 1" X 30" PIPE WITH RED PLASTIC CAP STAMPED "NORTHSTAR PLS 1823", N0°43'51"E, 113.51 FEET PER RECORD [12]).
6. FOUND 5/8" IRON ROD WITH RED PLASTIC CAP STAMPED "NORTHSTAR PLS 1823", 2" ABOVE GROUND LEVEL, N2°53'35"E, 115.44 FEET.
(SET 5/8" X 30" REBAR WITH RED PLASTIC CAP STAMPED "NORTHSTAR PLS 1823", N3°13'56"W, 115.46 FEET PER RECORD [11]).
7. FOUND 5/8" IRON ROD WITH RED PLASTIC CAP STAMPED "NORTHSTAR PLS 1823", 2" ABOVE GROUND LEVEL, N89°58'E, 48.81 FEET.
(SET 5/8" X 30" REBAR WITH RED PLASTIC CAP STAMPED "NORTHSTAR PLS 1823", 1" ABOVE GROUND LEVEL, S89°42'05"E, 48.75 FEET PER RECORD [11]).
8. FOUND ORANGE FIBERGLASS "SURVEY MARKER" POST 1 FOOT EAST.

MONUMENT SET (PROCEDURES AND DESCRIPTION):

HELD THE CENTER OF THE SAID FOUND "∩" SHAPED IRON BAR FOR THE TRUE CORNER. REMOVED IRON BAR AND SET A 2" X 36" GALVANIZED IRON PIPE WITH A 3 1/4" BRASS DISK CEMENTED IN THE TOP, 2" ABOVE GROUND LEVEL, MARKED AS SHOWN. LAYED THE IRON BAR ON THE SOUTH SIDE OF NEW MONUMENT IN A HORIZONTAL POSITION, 10" BELOW GROUND LEVEL.



- LEGEND**
- SET 5/8" X 30" REBAR WITH YELLOW PLASTIC CAP MKD "BENTON COUNTY SURVEYOR"
 - FOUND MONUMENT AS NOTED
 - (F) MEASUREMENT TO FACE
 - (C) MEASUREMENT TO CENTER
 - ⊙ GOVERNMENT MONUMENT SET AS SHOWN
 - ⊙ BEARING TREE AS NOTED
 - C.S. COUNTY SURVEY NUMBER
 - REST. RESTORATION NUMBER
 - BT BEARING TREE
 - RPC RED PLASTIC CAP
 - GLO GENERAL LAND OFFICE
 - WASH. WASHER
 - C.S.B.T. COUNTY SURVEYOR BEARING TREE
 - YPC YELLOW PLASTIC CAP

NEW ACCESSORIES:

1. SET 5/8" IRON ROD WITH YPC, 6" DEEP, S81°53'W, 27.08 FEET.

NOTES:

COMPASS DECLINATION IS 20° EAST. ALL MEASURED DISTANCES AND BEARINGS ARE TO THE CENTER OF THE OBJECT, UNLESS OTHERWISE NOTED. ALL BEARING TREES ARE PAINTED AND HAVE A B.T. TAG ATTACHED, FACING THE CORNER UNLESS OTHERWISE NOTED. ALL NEW BEARING TREES HAVE A PLASTIC WASHER (STAMPED "BENTON COUNTY SURVEYOR CORNER RESTORATION") ATTACHED (BY ALUMINUM NAIL) TO THE FACE, BELOW THE "BT" FOR DISTANCE AND ANGLE MEASUREMENT UNLESS OTHERWISE NOTED. THE DRAWING IS FROM AUTOCAD RELEASE 2002.

THIS RESTORATION WAS PERFORMED AT THE DIRECTION AND APROVAL OF THE BENTON COUNTY SURVEYOR. DS

FIRM/AGENCY: BENTON COUNTY SURVEYOR'S OFFICE
ADDRESS: 360 S.W. AVERY AVE. CORVALLIS OR 97333; PH. 766-6821
SURVEYOR: DAVID M. DEAN, P.L.S.
SURVEY CREW: DEAN

REGISTERED PROFESSIONAL LAND SURVEYOR

David M. Dean 5-24-02

OREGON
 JULY 13, 1984
 DAVID M. DEAN
 2090

RENEWAL DATE: 12/31/03