

CORNER FILE TRACKING

H:\Survey\Corners\Misc\Filetrac.doc

11/23/98

CORNER NUMBER
1452401100

STEP	HISTORY()	RESTORATION()
Form Prepared, DB	7/13/00	7/18/00
Field Inspection, DB	7/17/00	7/17/00
Form Checked, DB	7/17/00	8/1/00
Form Edited, DB	8/15/00	8/15/00
Form Signed, DB	8/16/00	8/16/00
Authorize Payment, DB	_____	_____
Archive Digital Files		
Collect Documents	8/31/00	8/31/00
Scanned	9-6-00	9-6-00
Copy For Filming		
Filed, DB		
Finish index (count unit)		
Filmed (Archived), DB		

(DB) = Entry needed in database (Access).

COMMENTS:

In the matter of the Re-establishment
of
Section corners by Co. Surveyor

Comer now the report of Geo. Mercer County Surveyor on the re-establishment of sections corners which is as follows, to-wit:

Notes of the re-establishment of Section and 1/4 Section corners in Townships 14 & 15 S of Range 5 N. made Feb 22 and 23rd 1898.

The 1/4 Section corner on the South boundary of Section 32 in T. 14 S. R. 5 N. being destroyed, also one of the bearing trees gone and the other being badly decayed it was necessary to reestablish the same which I did by planting a stone 16x12x12 inches firmly in the ground marked 1/4 Sec 32 face

The corner to Sections 4, 5, 32 & 33 on line between Townships 14 & 15 S. of R. 5 N. being entirely destroyed, I measured the distance East 4000 chains to the 1/4 Sec corner then in like manner West to the 1/4 Sec. corner and at equidistance for the true point for the Section corner which I re-established by planting a stone ~~16x12x12~~ inches firmly in the ground marked 4, 5, 32 & 33.

$$\begin{array}{r} 32 \overline{)33} \\ \underline{5} \\ 4 \end{array}$$

Then to find the corner to Sections 3, 4, 33 & 34 I measured East from the 1/4 Section corner on South boundary of Sections 33 T. 14 S. R. 5 N. 4000 chains at which point the corner had been destroyed with the exception of a stub of one of the bearing trees, which still had the original mark at the point indicated as the true point for the corner which I re-established by planting a stone 16x6x6 inches from which an Oak 16 in. in diameter bears N. 42° W. 417 the dist. Marked T. 14 S. R. 5 N. S. 33 S. T.

an Oak 8 in. in diameter bears N. 30° W. 144 the distant Marked S.

1902 33. B. J.

To find the $\frac{1}{4}$ Section corner between Sections thirty-two and thirty-three I run north from the Section corner 40.00 chms and upon examination I found a stump of one of the bearing trees, which agrees with the measurements and re-established the corner at the point indicated by setting a stone a part of an old Mill burr 18x12x10 inches firmly in the ground. Marked $\frac{1}{4}$ on East face.

For the point for center of Section 32 T. 14 S. R. 5 N. I run line from the $\frac{1}{4}$ Sec corner on the East to the $\frac{1}{4}$ Sec cor on the West and from the $\frac{1}{4}$ Sec corner on the South to the $\frac{1}{4}$ Section corner on the North and at the point of intersection established the corner by setting a stone 18x12x10 inches firmly in in the ground.

I re-established $\frac{1}{4}$ Sec corner of West boundary of Section 32 T. 14 S. R. 5 N. by setting a stake Marked R from which an Oak 24 in in diameter bears S $27^{\circ} 45'$ W. 72 chs dist Marked $\frac{1}{4}$ S. B. J.

the other tree standing.

The S. W. corner N. E. $\frac{1}{4}$ of N. E. $\frac{1}{4}$ of Sec 4 T. 15 S. R. 5 N. is a stone 16x8x8 set firmly in the ground.

The S. W. corner of the S. E. $\frac{1}{4}$ of N. E. $\frac{1}{4}$ of said Section 4 is a stone 12x10x10 inches set firmly in the ground.

I hereby certify that the foregoing are correct notes of the establishment of said corners.

Geo. Mercer,

County Surveyor

copy

OREGON CORNER RESTORATION FORM

3412

Section 32 Township 14 Range 5

County BENTON Date 2/23/1898

CORNER DESIGNATION

SECTION 32 SOUTH 1/4 CORNER
SECTION 5 SECTION 32

- Condition Report Only
- Not Found
- Renewed
- Unrecorded
- Surveyed In
- Referenced Out

Previous Renewals/Surveys, etc. NONE

Monument(s) & Accessories Found: (Condition and Source)

CORNER WAS DESTROYED
ONE BEARING TREE GONE, ONE BEARING TREE BADLY DECAYED
INFORMATION TAKEN FROM COUNTY COURT JOURNALS
BOOK 6 PAGE 117

Monument Detail

Sketch

STONE
12" x 12" x 16"

Monument Set (Procedures and Description)

SET A STONE 12" x 12" x 16" FIRMLY IN THE GROUND
SAID STONE MARKED WITH "1/4" ON THE SOUTH AND NORTH FACE

New Accessories NONE STATED

Location & Comments

Surveyor's Seal

Compass Declination _____

Firm/Agency BENTON

COUNTY

Address _____

Party Chief GEORGE MERCER

Notes _____

Witness _____

7

1/4-Section corner between sections 32 and 33, twp. 14-5

2264

Reestablishment by W. C. Galloway

May 8, 1912

Set 3/4" x 30" galvanized pipe stump standing
 Oak 4" in diam bears N. 31° 18' E 3.963 chains
 Oak 5" in diam bears N. 47° 33' W 3.710 chains
 Witnesses Edd Kay and W. A. Van

SEE FILE 145300140

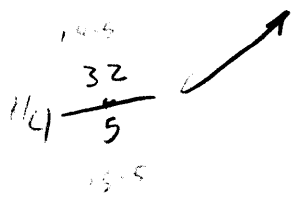
2265

1/4-Section corner on south side of Section 32, Twp. 14-5

Reestablishment by W. C. Galloway

May 9, 1912

Set stone 7" x 10" x 18" 14" under surface (40.13 chains from corner East)
 Pear tree N. 64° 30' E .379 chains dist.
 Pear tree S. 82° 30' E .086 chains dist.
 Pear tree S. 88° 30' W .369 chains dist.
 Pear tree N. 32° 30' W .258 chains dist.
 Witnesses Edd Kay and W. A. Van



1/4-Section corner on Southside of Section 33, Twp. 14 S R 5 W

2266

Reestablishment by W. C. Galloway

May 8, 1912

Set 3/4" galvanized pipe
 Apple 12" in diam bears N. 60° E .038 chains
 Witnesses Edd Kay and W. A. Van

SEE CORNER FILE NO. 145340100

C.S. #11 sec. S.E. cor. of Jas. L. Mulkey's D.L.C. #63, Tp. 11 S. R. 5 W.
 Set 1 1/2" pipe
 Stone at S.W. cor. of S.M. Strout's D.L.C. #45 bears North 49° 75' chs.
 Witness Robinson May 2, 1912.

" #60 1/4 sec. cor. on south side of sec. 33 Tp. 14 S. R. 5 W. C.S.

Set 3/4" galvanized pipe
 Apple 12" in dia. bears N 60° E. 038 chs.
 Witness Edd Kay & W.A. Van May 8, 1912.

" 1/4 sec. cor. bet. sec. 32 & 33 Tp. 14-5.

Set 3/4" galvanized pipe stump std.
 Oak 4" in dia. bears N 31° 18' E. 3963 chs.
 " 5" " " N. 47° 33' W. 3710 "

Witness Edd Kay & W.A. Van May 8 1912.

" N.E. cor. of Robert B. Boyde's D.L.C. #67 Tp. 14-5.

Set 4" x 4" x 20" casting with hole in top. found part of stone
 Witness Edd Kay & W.A. Van May 8, 1912.

" Interior cor. of Robert B. Boyde D.L.C. #67 Tp. 14-5.

Set 3/4" galvanized pipe 12" under surface.
 Stone for sec. cor. bears 10.25 chs. West.
 Witness Edd Kay and W.A. Van May 9, 1912.

" 1/4 sec. cor. between sec. 29 & 32 Tp. 14-5.

Set 3/4" galvanized pipe 10" under surface
 Apple tree 3/4" in dia. bears S. 24° 50' E. 389 chs.
 " " 1/2" " " S. 60° 20' E. 714 "

Witness Edd. Kay & W.A. Van May 10, 1912.

" 1/4 sec. cor. on south side of sec. 32 Tp. 14-5

Set stone 7" x 10" x 18" 14" under surface. (#13 chs. from cor. East)
 Pear tree N. 64° 30' E. 379 chs. dist.
 " " S. 82° 30' E. 086 " "
 " " S. 88° 30' W. 369 " "
 " " N. 32° 30' W. 258 " "

Witness Edd Kay & W.A. Van May 9, 1912.

" 118 Int. cor. of Hiram Allen's D.L.C. #55 Tp. 12 S. R. 5 W.

Set 1" iron rod stump std.
 Oak 18" in dia. bears N. 73° E. 458 chs.
 " 18" " " N. 57° W. 312 "

Witness Olly Dams, Frederick & W. Monte May 15, 1912.

" " Most S. S.W. cor. of Hiram Allen's D.L.C. #55 Tp. 12-5.

Set a 1 1/2" galvanized pipe oak stump hole with charred wood.
 Oak 8" in dia. bears N. 84° E. 708 chs.
 " 24" " " N. 24° W. 197 " std.

Witness O. Dams, F. & W. Monte May 15, 1912.

DATE 07/13/00TOWNSHIP 14 SOUTH, RANGE 5 WEST, WILLAMETTE MERIDIAN; SECTION 32 CORNER S 1/4
DONATION LAND CLAIM NONE CORNER _____**COMMON CORNER(S):**

NORTH 1/4 CORNER SECTION 5, T15S, R5W

RECORDS (INFORMATION IN BOLD ITALICS IS COUNTY STAFFS' INTERPRETATION OF THE RECORD)

- [01] ORIGINAL GLO SURVEY BY JAMES FREEMAN, D.S., DATED SEPTEMBER 30, 1852. *SET POST WITH 2 BEARING TREES, MEASURED TO THE FACE.*
- [02] COUNTY COURT JOURNAL, BOOK 6, PAGE 117 BY GEORGE MERCER, C.S., DATED FEB. 22, 1898. *FOUND ONE DECAYED GLO BEARING TREE AND SET A 16" X 12" X 12" STONE MARKED 1/4 S ON NORTH FACE.*
- [03] RESTORATION NO. 3412 BY BENTON COUNTY. *TRANSCRIBED COPY OF RECORD [02] AND MAY CONTAIN ERRORS AND OMISSIONS.*
- [04] COUNTY SURVEY NO. 135 BY F. M. WILKES, C.S., NO DATE GIVEN. *NO CORNER DESCRIPTION.*
- [05] COUNTY SURVEY NO. 309 FIELD NOTES (BOOK 12, PAGE 31) BY W. C. GALLOWAY, D.C.S., DATED MAY 7, 1912. *SET 18"X10"X7" STONE WITH 4 NEW BEARING TREES.*
- [06] OLD RESTORATION BOOK NO. 1, PAGE 36, BY W. C. GALLOWAY, D.C.S., DATED MAY 9, 1912. *SAME INFORMATION AS RECORD [05].*
- [07] RESTORATION NO. 2265. *TRANSCRIBED COPY OF RECORD [06] AND MAY CONTAIN ERRORS AND OMISSIONS.*
- [08] MAP NO. 14-5-20 BY W. C. GALLOWAY, D.C.S., DATED 1912. *SAME INFORMATION AS RECORD [05].*
- [09] MAP NO. 15-5-5 BY BENTON COUNTY, NO DATE GIVEN. *NO MONUMENT DESCRIPTION.*

COMMENTS/LOCATION/ETC:**NOTES:**

THIS IS A MICROSOFT WORD 97 DOCUMENT NAMED "45240100" CREATED FROM A BOILER PLATE DOCUMENT NAMED "HISTORY", WHICH HAS A STYLESHEET NAMED "CORNER" ATTACHED TO IT.

FIRM/AGENCY: BENTON COUNTY SURVEYOR'S OFFICE
ADDRESS: 360 S.W. AVERY AVE. CORVALLIS OR 97333; PH. 766-6821
RESEARCH BY: DAVID M. DEAN, P.L.S.
DATA ENTRY BY: DEAN

BENTON COUNTY CORNER RESTORATION FORM, PAGE 1 OF 1, 145240100R3

SEE CORNER HISTORY FORM FOR RECORDS ETC.

CORNER RESTORATION FIELD BOOK NUMBER 18 **PAGE(S)** 00 **DATE** 07/17/2000
TOWNSHIP 14 SOUTH, RANGE 5 WEST, WILLAMETTE MERIDIAN; SECTION 32 CORNER N1/4
DONATION LAND CLAIM NONE **CORNER** N/A
CONDITION REPORT ; **REFERENCED OUT** ; **RENEWED** XX ; **SURVEYED IN**

LOCATION AND COMMENTS:

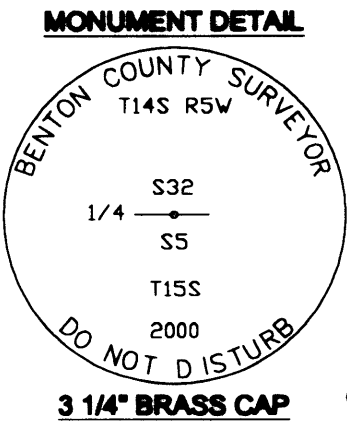
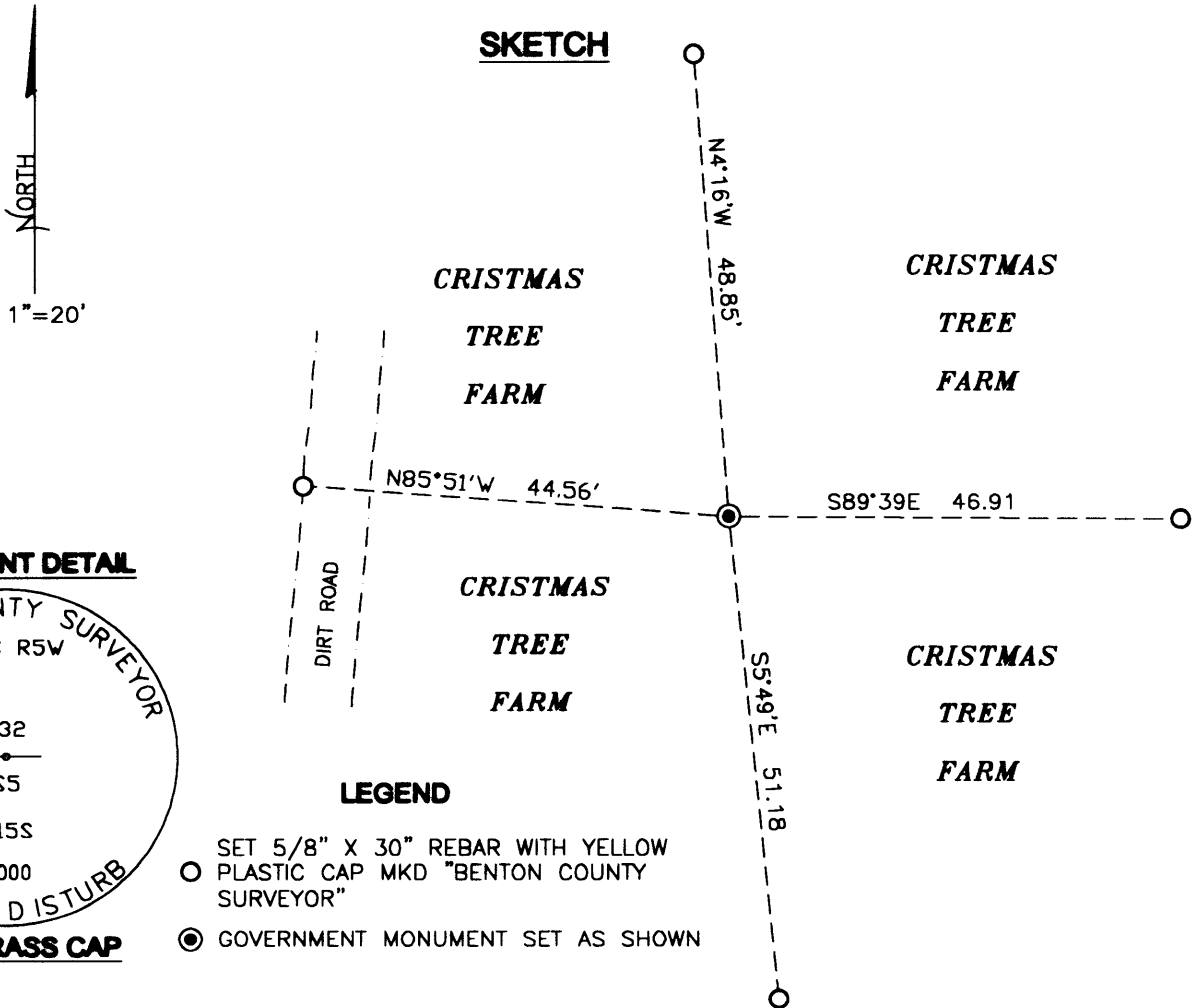
CORNER IS LOCATED IN A FLAT AREA OF A CHRISTMAS TREE FARM, 35 FEET EAST OF A NORTH-SOUTH DIRT ROAD. TO REACH CORNER FROM THE JUNCTION OF COON AND CHERRY CREEK ROADS, TRAVEL SOUTHERLY AND WESTERLY ON CHERRY CREEK ROAD FOR 0.78 MILES TO A DIRT ROAD ON THE RIGHT (NORTH). THEN NORTHWESTERLY ON DIRT ROAD FOR 0.27 MILES, THEN 35 FEET EAST TO CORNER. CORNER IS GOOD FOR PREMARKING AND GPS CONTROL.

MONUMENTS AND ACCESSORIES FOUND (CONDITION AND SOURCE):

FOUND: 18" X 10" X 8" STONE WITH "CS" ON THE EAST FACE, 13" BELOW GROUND SURFACE IN CHRISTMAS TREE FARM FOR THE CORNER.
 (SET 18" X 10" X 7" STONE PER RECORDS [05], [06] AND [08]).

MONUMENT SET (PROCEDURES AND DESCRIPTION):

SET 2" INSIDE DIAMETER X 36" GALVANIZED IRON PIPE WITH A 3 1/4" BRASS DISK CEMENTED IN THE TOP, 16" BELOW GROUND LEVEL, MARKED AS SHOWN, IN THE SAME X, Y POSITION AS THE HIGH POINT OF SAID FOUND STONE. NO EVIDENCE OF THE ORIGINAL GLO CORNER AND ACCESSORIES, OR THE STONE SET IN RECORD [02] COULD BE FOUND AFTER A THOROUGH SEARCH OF THE AREA. BURIED SAID FOUND STONE ON SOUTH SIDE OF NEW MONUMENT, 20" BELOW GROUND LEVEL.



NEW ACCESSORIES:

- SET: REBAR (SEE NOTES) 18" DEEP, N4°16'W, 48.85 FEET.
- SET: REBAR (SEE NOTES) 18" DEEP, S89°39'E, 46.91 FEET.
- SET: REBAR (SEE NOTES) 18" DEEP, S5°49'E, 51.18 FEET.
- SET: REBAR (SEE NOTES) 18" DEEP, N85°51'W, 44.56 FEET.

NOTES:

COMPASS DECLINATION IS 20° EAST. ALL MEASURED DISTANCES AND BEARINGS ARE TO THE CENTER OF THE OBJECT, UNLESS OTHERWISE NOTED. ALL SET REBAR ARE 5/8" X 30" AND HAVE A YELLOW PLASTIC CAP (STAMPED "BENTON COUNTY SURVEYOR") ATTACHED TO THE TOP.

THIS DOCUMENT WAS NAMED AND CREATED IN A MANNER SIMILAR TO THE HISTORY FORM. THE NAME OF THE BOILER PLATE IS "MONUMENT". THE SKETCH IS FROM AUTOCAD RELEASE 14.

THIS RESTORATION WAS PERFORMED AT THE DIRECTION AND APPROVAL OF THE BENTON COUNTY SURVEYOR. *[Signature]*

FIRM/AGENCY: BENTON COUNTY SURVEYOR'S OFFICE
ADDRESS: 360 S.W. AVERY AVE. CORVALLIS OR 97333; PH. 766-6821
SURVEYOR: DAVID M. DEAN, P.L.S.
SURVEY CREW: JOSH RUDIGER, SURVEY TECH.

REGISTERED
 PROFESSIONAL
 LAND SURVEYOR

David M. Dean 8/16/00

OREGON
 JULY 13, 1984
 DAVID M. DEAN
 2090

RENEWAL DATE: 12/31/01

CORNER RESEARCH

AUTHOR: DD
TOWNSHIP: 14-5
CORNER: S 1/4 SEC 32

CORNER NO. 144 240 100
DATE 7/13/00

SURVEYS:

- 0) 135
- 1)
- 2)
- 3)
- 4) 209
- 5) 461 201 505
- 6)
- 7)
- 8) 49
- 9)
- 10)
- 11)
- 12)
- 13)
- 14)
- 15)
- 16)
- 17)

ANDREW PORTER SURVEYS: NONE

SURVEY FIELD BOOKS:
4-4, 3-24, 3-26, 4-11, 4-29, 5-9, ^{was 6} 12-27, 80-15, 88-9, 80-1, 77-40

GALLOWAY HARDCOPIES:
14-5-20, 15-5-5
no mon. desc.

SUBDIVISION'S:
OACO ORCHARDS ^{no mon desc.} 4/7/10

PARTITION'S:
NONE

COUNTY ROAD'S: BK1, PG 172
CHERRY CRK 45060 = LAEB, 172, 207, 507

OTHER ROADS AND HWY'S:

CORNER REST. BK. 1: 1-36
OTHER RESTORATIONS: 2268, 8412

BPA: NONE

RAIL ROADS: N/A

GLO NOTES: ✓

MISC. RECORDS:

145240100

REMONUMENTING 1/4 ⁵/₃₂ ^{SPARE} → 0

1/4 ⁵/₃₂ Fd 17 1/2" X 10" X 8" STONE
 W/ "CS" ON EAST FACE 1.28
 13" DEEP IN CHRISTMAS TREE

FARM FOR CORNER - SEE REST. BK 1,
 PG. 36 BY W.C. GALLOWAY
 NO GLO OR CS ACCESSORIES REMAIN
 SEARCHED FOR GEORGE MECER'S 1898
 CORNER WITHOUT SUCCESS.

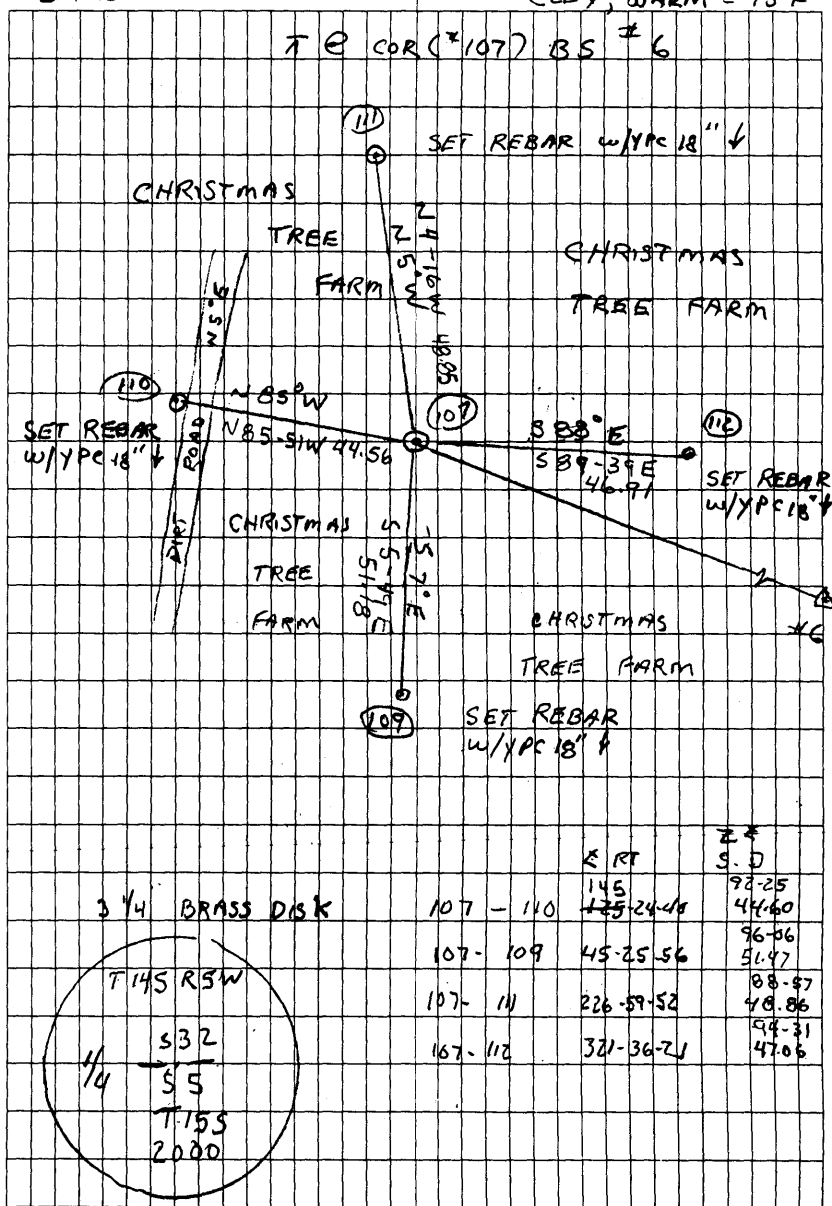
SET 2' X 36" GIP W/ 3' 1/4" BRASS DISK
 CEMENTED ON TOP AT THE SAME
 X, Y POSITION OF HIGH POINT ON SAID
 Fd STONE, 16" BELOW GROUND LEVEL.
 SET 6' ORANGE FIBERGLASS "SURVEY
 MARKER POST" 0.5' E OF CORNER.
 BURIED Fd STONE 20" DEEP ON
 SOUTH SIDE OF CORNER W/ MKS
 DOWN

6-106-107 50-15-00 100-29-30 19.076 = 18.75 107) CORNER AS SET

0.27 mi Km CERRY CIRC RD TO COR

LEICA TOR 110G
 TOS W/ PCMC I
 KENFALK. CRD

7/17/00 18/60
 D. DEAN
 J. RUDIGER
 CLDY, WARM ± 75°F



List Points Report

08/09/2000

File> s:\survey corners\corners\t-15\kenfaulk.crd

Job Description>

Job Number> 0.000 Job Date> 2000.0711

PointNo.	Northing(Y)	Easting(X)	Elev(Z)	Description
1	5000.0000	5000.0000	0.00	START
2	4920.5495	5195.3256	100.00	SET SPIKE
3	4929.2639	5736.1463	0.00	SET SPIKE
4	4982.3084	5963.0417	0.00	SET SPIKE
5	5695.4874	5845.9907	0.00	SET SPIKE
6	6293.8018	5025.3256	0.00	FD 3/4 IP
7	5229.0454	4965.9024	0.00	SET SPIKE
8	5000.0000	5000.0000	0.00	1
9	4920.5867	5195.2817	0.00	2
10	4999.9970	5000.0096	0.00	1
57	10315.1259	5753.1543	0.00	PK
58	10287.7529	5995.2558	0.00	1/4 COT 32/33
59	10289.8648	6671.9231	0.00	NNE BOYD DLC
100	5003.6625	6008.5916	0.00	1/4 5/4 15_5
101	6319.6431	5001.4514	0.00	FD 3/4 IP
102	6322.1176	6005.0975	0.00	FD 3/4 IP
103	7650.3549	8650.4582	0.00	3 1/4 BD N 1/4 4
104	7648.4362	6679.3266	0.00	3/4 IP DLC COR
105	7647.8188	6001.4796	0.00	SET SPIKE
106	7654.1331	3353.1704	0.00	SET SPIKE
107	7635.3842	3353.3736	0.00	AS SET 1/4 32/5
108	7647.7807	6002.1257	0.00	STONE REMAINS NW SEC 4
109	7584.4684	3358.5670	0.00	SET REBAR
110	7623.2176	3310.5067	0.00	SET REBAR
111	7684.0994	3349.7462	0.00	SET REBAR
112	7635.0980	3400.2827	0.00	SET REBAR
113	7588.7434	6007.1411	0.00	rebar
114	7620.6402	5941.1534	0.00	rebar
115	7702.4333	6000.5577	0.00	rebar
116	7673.0948	6055.7622	0.00	rebar
117	7612.9095	6683.6156	0.00	rebar
118	7651.6777	6720.4612	0.00	rebar
119	7687.5236	6679.3586	0.00	rebar
120	7643.3745	6638.6654	0.00	rebar
152	6322.1273	6005.1021	0.00	3/4 ip
154	7648.3372	6679.4020	0.00	3/4 ip
158	7647.8034	6002.0971	0.00	as set ne 5
200	7647.7777	6002.8270	0.00	calc
201	7633.6431	3354.2847	0.00	calc
202	7648.3830	6001.5827	0.00	CALC
203	7647.5240	6002.8273	0.00	CALC
666	5003.0753	5846.8926	0.00	ddcalc

Number of points listed> 42