

C.S. 322
Apr. 17, 1923
W. W. Larsen
Perkins
Nat. Hill

1/4 Sec. cor. betw. 27 & 28 T. 14 S R 5 W.

Stone 4" x 4" x 2' set 2" below surface from which

Ash 12" in diam. bears West .53 chs. dist

Pine 20" " " " S 85° E 1.61 " "

(This stone found by W.C.G. on Oct. 22, 1936. (No previous record of this stone) ...)

Sec. cor. $\frac{21}{28} \frac{22}{27}$ T. 14 S R 5 W.

Set a 1 1/4" shaft from which

Oak 6" in diam. bears S 30° E .18 chs

Pine 40" " " " S. 43° E. 4.443 "

Oak 30" " " " N 79° W. 3.170 "

1/4 cor. betw. sec's. 22, 27 T. 14 S R 5 W.

Set a 1 1/2" pipe from which

Pine stump bears N. 62° W. 3.50

Ash 14" in dia. bears S. 62° E. 2.71 chs.

" 6" " " " S. 2° E. 1.06 "

S. W. Cor. of Geo. Coffee Cl. 68 T. 14 S R 5 W.

Set 4-6" gravel or boulders

Fence bears south .166 chs.

" " East .180 "

Sec. cor. $\frac{22}{27} \frac{23}{26}$ T. 14 S R 5 W.

Set 1 1/2" pipe from which

Ash 10" in diam. bears S. 82° W. 3.95 chs

" 12" " " " S 29° W. 9.36 "

" 14" " " " S 19 1/2° E. 4.12 "

N.E. Corner Wm. Coyl. Cl. 62 T. 14 S R 5 W.

Set 1/2" rod from which a

1 1/2" pipe bears N. 89° 28' W 10.01 chs

1/2" rod " S. 0° 04' W 13.30 chs

S. E. Corner Wm. Coyl. Cl. 62 T. 14 S. R 5 W.

Set store door from which: Set a 1 1/4" pipe W.C.G. found
C.S. 322
Nov. 25, 1945

Thorn 8" in dia. bears S. 15° W. 1.86 chs. Out
and fall
Out.

Pine 30" " " " N 73° W. 2.47 "

" 24" " " " N. 67° W. 2.55 "

C.S. 140

+ 254

W. W. L.

Rob. Harron

June, 1926

S. W. Corner Samuel H. Oliver Cl. 47 T. 14 S R 5 W.

Set 1 1/4" pipe from which: 2 1/4" pipe N. 0° 04' E. 3.03

Oak 10" in diameter bears N. 3 1/2° E. 7.389 5th
chains

Pine 36" " " " S. 58 1/2° W. 2.68 "

Phone pole " N 70° E. 1.745 "

N. W. Corner Samuel H. Oliver Cl. 47, T. 14 S. R 5 W.

Set 6" casting in fence line E + W

.05 W. of fence line N + S.

$\frac{1}{4}$ -Corner between sections 22, 27, Twp. 14, S., R. 5 W.

2240

Reestablishment by W. W. Larsen

April 17, 1923

Set a $1\frac{1}{4}$ " pipe

Pine stump bears N 62° W

Ash 14" in diam bears S 62° E

Ash 6" in diam bears S 2° E

3.50 chains

.271 chains

.106 chains

Witness Mr. Perkins and Nat. Hill

T14S R5W SEC. 22 S 1/4 + SE COR. C.B. HINTON D.L.C. 48

FND. 1 1/4" I.D. RUSTED IRON PIPE FOR THE COR. (COR. REST. NO. 2240)

" THE MOSTLY ROTTED REMAINS OF AN ASH STUMP APPROX. 24" IN DIA. BEARS S59°E ~ 179 (S 62°E ~

17.89' COR. REST. NO. 2240) AN ASH 13" IN DIA. BEARS S1°W ~ 7.00' (S2°E ~ 7.00'

" COR. REST. NO. 2240) TREE HAS A FAINT HEALED FACE SET A PK NAIL + B.C.B.W. IN THE E 1/4 BASE. SET A BT TAG ON THE N 1/4 FACE

" 1 1/4" I.D. I.P. @ THE TOP 18" BENT W-SW 1/4 1.0' BEARS N 87°W ~ 33.06' (N 89°40'W ~ 32.27' C.S. 185B) TIED THE STRAIGHT BASE.

NO OTHER RECORD BEARING OBJECTS WERE RECOVERED

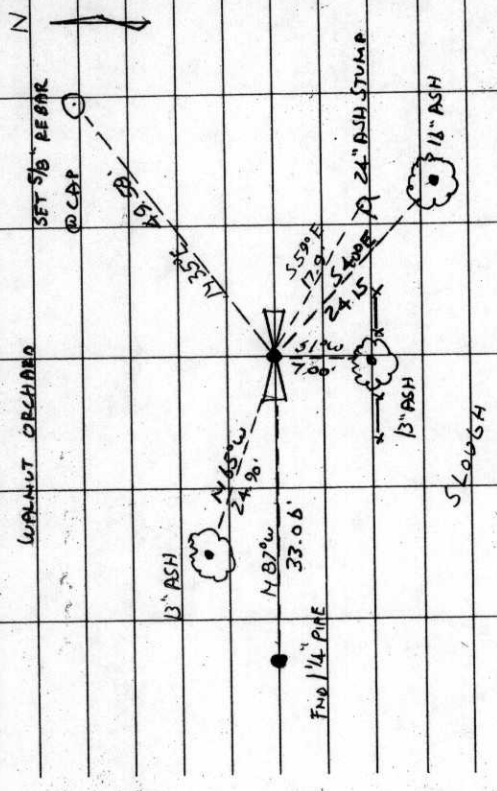
SET: 2" 1.0 x 31" LONG IRON PIPE @ A 3 1/4" BEN. CO. B.C. STAMPED AS SHOWN CENTERED OVER THE RECOVERED 1 1/4" PIPE.

AN ASH 13" IN DIA. BEARS N 65°W ~ 24.90' FACED + SCRIBED "1/4 S22 BT" SET A PK NAIL + B.C.B.W. IN THE S 1/4 BASE. SET A BT TAG ON THE E 1/4 FACE

AN ASH 16" IN DIA. BEARS S40°E ~ 24.15' FACED + SCRIBED "1/4 S27 BT". SET A PK NAIL + B.C.B.W. IN THE NE 1/4 BASE. SET A B.T. TAG ON THE NW 1/4 FACE.

8/31

9/17/90; C.J.M. MEAD, SILVA COMP. 20° E. DEC. P.C. WARM



SET: 5/8" x 30" REBAR @ A.Y.P.C. MKD. "BENTON COUNTY SURVEYOR" 6" B.C.B.S. BEARS N 35° E ~ 49.58' ORANGE FIBERGLASS "SURVEY MARKER" POST 1' N 1/4

THE COR. IS LOCATED 7' N 1/4 FROM THE REMAINS OF AN E-W WOVEN WIRE FENCE + 50' ± S 1/4 FROM A WALNUT ORCHARD IT IS POOR FOR REMARKING + GPS CONTROL.

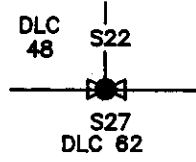
T14S R5W D.L.C. 48 SET 1/4 S27 D.L.C. 62 1990 STAMPINGS

BENTON COUNTY CORNER RESTORATION FORM **145440300** 3814

SECTION 22 TOWNSHIP 14 S RANGE 5 W DLC 48 C.B. HINTON (S.E. COR) CORNER S 1/4 SEC. 22
 DATE 9/17/90 CORNER RESTORATION FIELD BOOK NUMBER 8 PAGE 31

CORNER DESIGNATION:

THE QUARTER CORNER COMMON TO SECTIONS 22 AND 27, AND THE SOUTHEAST CORNER OF THE C.B. HINTON DLC NO. 48, IN T 14 S, R 5 W, WILLAMETTE MERIDIAN.



- CONDITION REPORT ONLY
- REFERENCED OUT
- RENEWED
- SURVEYED IN

LOCATION AND COMMENTS:

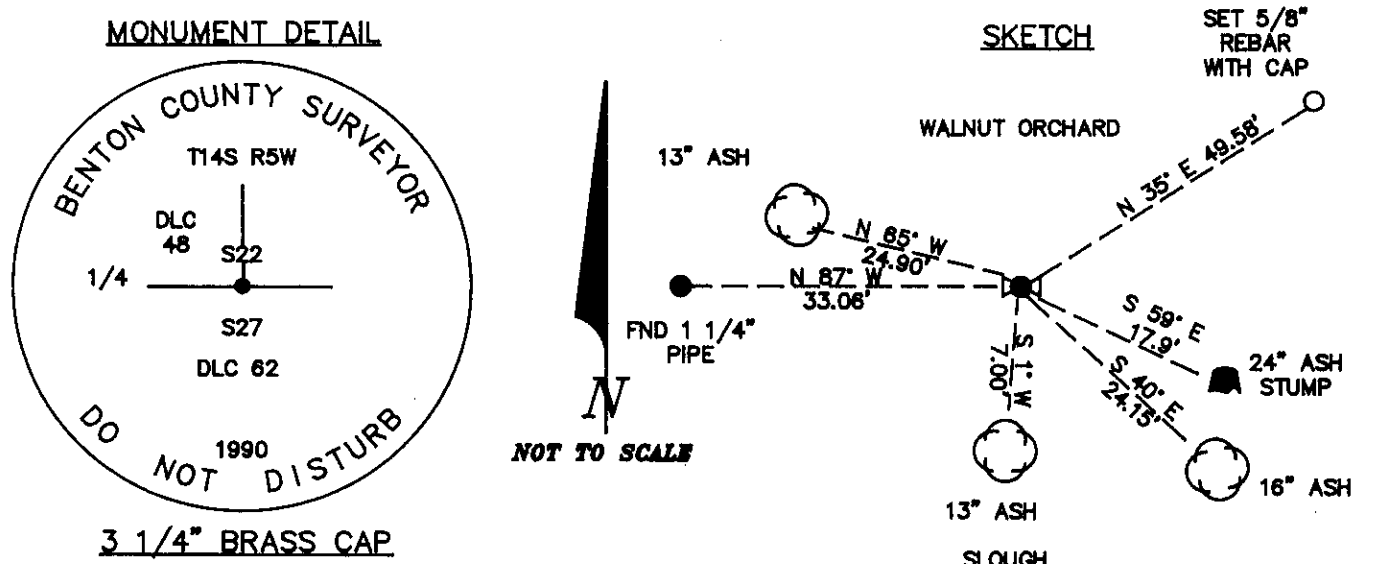
THE CORNER IS LOCATED 7 FEET NORTHERLY FROM THE REMAINS OF AN EAST-WEST WOVEN WIRE FENCE AND APPROXIMATELY 50 FEET SOUTHERLY FROM A WALNUT ORCHARD.

PREVIOUS RENEWALS/SURVEYS, ETC.:

- ORIGINAL GLO SURVEY BY KIMBALL WEBSTER IN 1853.
- DONATION LAND CLAIM SURVEY BY DENNIS HATHORN IN 1861.
- COUNTY SURVEY NO. 1858 BY W.W. LARSON ON APRIL 16, 1923.
- COUNTY SURVEY NO. 932 BY W.W. LARSON DATE NOT GIVEN.
- CORNER RESTORATION NO. 2240 BY W.W. LARSON ON APRIL 17, 1923.
- COUNTY SURVEY NO. 3716 BY FRED LEMKE ON DECEMBER 1, 1962.

MONUMENTS AND ACCESSORIES FOUND (CONDITION AND SOURCE):

- FOUND: 1 1/4" INSIDE DIAMETER IRON PIPE FOR THE CORNER (CORNER RESTORATION NO. 2240).
- FOUND: THE ROTTED REMAINS OF AN ASH STUMP APPROXIMATELY 24" IN DIAMETER, BEARS S 59° E 17.9 FEET (S 62° E 17.89 FEET CORNER RESTORATION NO. 2240).
- FOUND: AN ASH 13" IN DIAMETER BEARS S 1° W 7.00 FEET (S 2° E 7.00 FEET CORNER RESTORATION NO. 2240). THE TREE HAS A FAINT HEALED FACE. SET A PK NAIL AND B.C.B.W. IN THE EASTERLY BASE. SET A B.T. TAG ON THE NORTHERLY FACE.
- FOUND: 1 1/4" INSIDE DIAMETER IRON PIPE WITH THE TOP 18" BENT WEST-SOUTHWESTERLY 1.0 FOOT, BEARS N 87° W 33.06 FEET (N 89° 40' W 32.27 FEET COUNTY SURVEY NO. 1858). TIED THE STRAIGHT BASE.
- NO OTHER RECORD BEARING OBJECTS WERE RECOVERED.



MONUMENT SET (PROCEDURES AND DESCRIPTION):

SET: 2" INSIDE DIAMETER X 36" LONG IRON PIPE WITH A 3 1/4" BENTON COUNTY BRASS CAP STAMPED AS SHOWN CENTERED OVER THE RECOVERED 1 1/4" PIPE.

NEW ACCESSORIES:

- AN ASH 13" IN DIAMETER BEARS N 65° W 24.90 FEET, FACED AND SCRIBED "1/4 S22 BT". SET A PK NAIL AND B.C.B.W. IN THE SOUTHERLY BASE. SET A B.T. TAG ON THE EASTERLY FACE.
- AN ASH 16" IN DIAMETER BEARS S 40° E 24.15 FEET, FACED AND SCRIBED "1/4 S27 BT". SET A PK NAIL AND B.C.B.W. IN THE NORTHEASTERLY BASE. SET A B.T. TAG ON THE NORTHWESTERLY FACE.
- SET: 5/8" X 30" REBAR WITH A YELLOW PLASTIC CAP MARKED "BENTON COUNTY SURVEYOR" 6" BELOW THE GROUND SURFACE. BEARS N 35° E 49.58 FEET.
- SET: ORANGE FIBERGLASS "SURVEY MARKER" POST 1 FOOT NORTHERLY.

NOTES:

B.C.B.W. IS A BRASS WASHER STAMPED "BENTON COUNTY SURVEYOR". COMPASS DECLINATION IS 20° EAST. ALL MEASURED DISTANCES AND COMPASS BEARINGS ARE TO THE CENTER OF THE OBJECT, UNLESS OTHERWISE NOTED.

FIRM/AGENCY: BENTON COUNTY PUBLIC WORKS
ADDRESS: 360 S.W. AVERY AVE. CORVALLIS OR. 97333; PH. 757-6821
PARTY CHIEF: CURTIS J. LIESENFELT
CREW: MARK E. ANDERSON
WITNESS:

REGISTERED
 PROFESSIONAL
 LAND SURVEYOR

Danna L. Fehrenbacher

OREGON
 JULY 16, 1982
 DANNA L. FEHRENBACHER
 1995