

C.S. #254 cont. 1/4 sec. cor. bet. secs. 26 & 27 T. 14S R. 5W
 Set 4"x4"x24" oak stake set a 1/4" galv. pipe.
 Oak 12" in dia. bears N. 72° E. - 64 chs. std.
 Ash 20" " " S. 44° 30' W. 474 " Stamp in May 24, 1943
 Oak 36" " " N. 80° W. 420 " Stamp.
 18" " " S. 4° E. 420 " May 24, 1943
 Witnesses F.A. & Wm. Davis July 7, 1917.

C.S. #134 cont. S.E. corner of Thos. J. Berry D.L.C. #52 T. 10-5
 Witnesses G.A. Sharer
 Jos. C. Smith
 April 1917.
 by M. C. Galloway

Set 3/4" pipe also cast iron 1" x 5" x 18" by pipe.
 Ash 6" in dia. bears S 3° 50' W. 2.613 chs. std.
 Oak 12" " " S 70° 30' W. 5.29 "
 S.W. cor. of Thos. J. Berry D.L.C. #52 T. 10-5.
 Set upon timber 12' under surface set on line proportional
 Ash 12" in dia. bears S. 52° 53' E. 8.146 chs. slope
 E. corner of school house S. 6° 27' W.

$\frac{1}{4}$ -Section corner between sections 26 and 27, Twp. 14 S., R. 5 W. 2252

Reestablishment by W. C. Galloway

July 7, 1917

Set 4" x 4" x 24" Oak stake, Set a $1\frac{1}{4}$ " galvanized pipe.

Oak 12" in diam bears N 72° E	.64 chains
Ash 20" in diam bears S 44° 30' W	.474 chains
Oak 36" in diam bears N 80° W	.40 chains
Oak 18" in diam bears S 4° E	.420 chains

Witnesses F. A. and William Davis

T14S R5W SEC 26 W 1/4

FND.: 3/4" I.D. I.P. @ THE TOP 15" BENT O.S. N 1/4 BEARS
N 89° 58' E ** 336.93' (N 89° 58' E - 336.93' MAP NO.
14-5-0007). TIED THE STRAIGHT BASE.
NO OTHER RECORD BEARING OBJECTS WERE RECOVERED

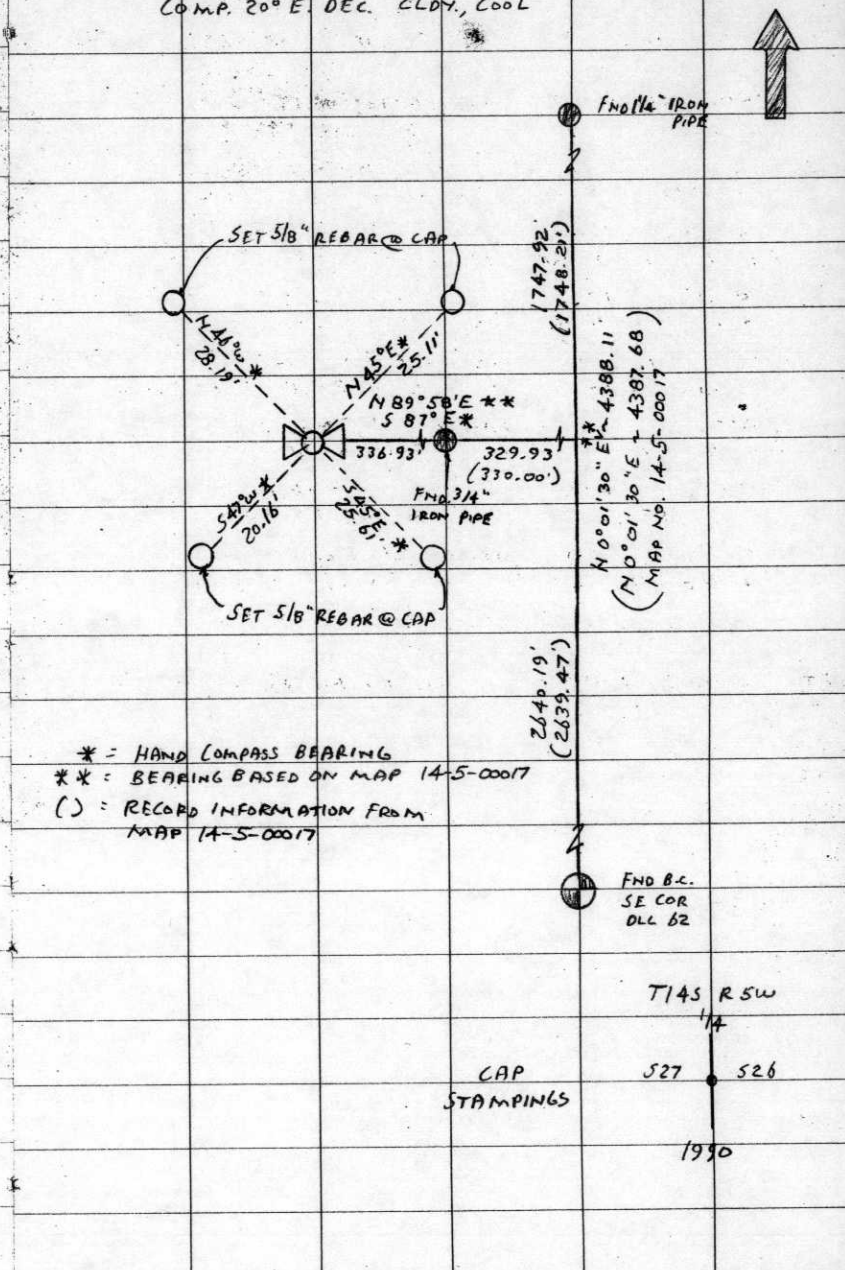
SET: 2" I.D. x 36" LONG IRON PIPE @ A 3/4" BEM. CO. B.C.
STAMPED AS SHOWN AT RECORD BEARING & DIST.
AS SHOWN ON MAP 14-5-0007 FROM THE RECOVERED
3/4" PIPE. THE B.C. IS 20" B.G.S.

SET: 5/8" x 30" REBAR @ A Y.P.C. MKD. "BENTON COUNTY SUR-
VEYOR" 19" B.G.S. BEARS N 45° E* 25.11'
" 5/8" x 30" REBAR @ A Y.P.C. MKD. "BENTON COUNTY SUR-
VEYOR" 22" B.G.S. BEARS S 45° E* 25.61'
" 5/8" x 30" REBAR @ A Y.P.C. MKD. "BENTON COUNTY SUR-
VEYOR" 22" B.G.S. BEARS S 47° W* 20.16'
" 5/8" x 30" REBAR @ A Y.P.C. MKD. "BENTON COUNTY SUR-
VEYOR" 20" B.G.S. BEARS N 46° W* 28.19'
" ORANGE FIBERGLASS "SURVEY MARKER" POST O.S. W 1/4

THE COR IS LOCATED IN A CULTIVATED FIELD 35' ± NE 1/4
FROM A SWALE. IT IS GOOD FOR PRE MARKING
& GPS CONTROL

11/8/90; CTL & MEAD; KERN DNM 2-A, DM 503, SILVER
COMP. 20° E. DEC. CLDY, COOL

9/11

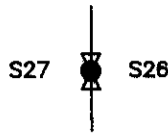


T14S R5W
1/4
CAP 527 528
STAMPINGS
1990

SECTION 26 TOWNSHIP 14 S RANGE 5 W DLC _____ CORNER W 1/4
 DATE 11/8/90 CORNER RESTORATION FIELD BOOK NUMBER 9 PAGE 11

CORNER DESIGNATION:

THE QUARTER CORNER COMMON TO SECTIONS 26 AND 27, IN T 14 S, R 5 W, WILLAMETTE MERIDIAN.



- _____ CONDITION REPORT ONLY
- _____ REFERENCED OUT
- XX RENEWED
- _____ SURVEYED IN

LOCATION AND COMMENTS:

THE CORNER IS LOCATED IN A CULTIVATED FIELD APPROXIMATELY 35 FEET NORTHEASTERLY FROM A SWALE.

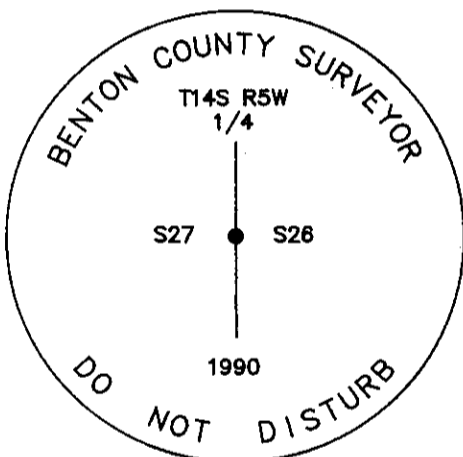
PREVIOUS RENEWALS/SURVEYS, ETC.:

ORIGINAL GLO SURVEY BY KIMBALL WEBESTER IN 1853.
 CORNER RESTORATION NO. 2252 BY W.C. GALLOWAY ON JULY 7, 1917.
 COUNTY SURVEY NO. 932 BY W.W. LARSON (NO DATE GIVEN).
 COUNTY SURVEY NO. 1624 BY W.C. GALLOWAY ON MAY 24, 1943.

MONUMENTS AND ACCESSORIES FOUND (CONDITION AND SOURCE):

FOUND: 3/4" INSIDE DIAMETER IRON PIPE WITH THE TOP 15" BENT 0.5 FOOT NORTHERLY BEARS N 89° 58' E ** 336.93 FEET (N 89° 58' E 336.93 FEET MAP NO. 14-5-00017). TIED THE STRAIGHT BASE.
 NO OTHER RECORD BEARING OBJECTS WERE RECOVERED.

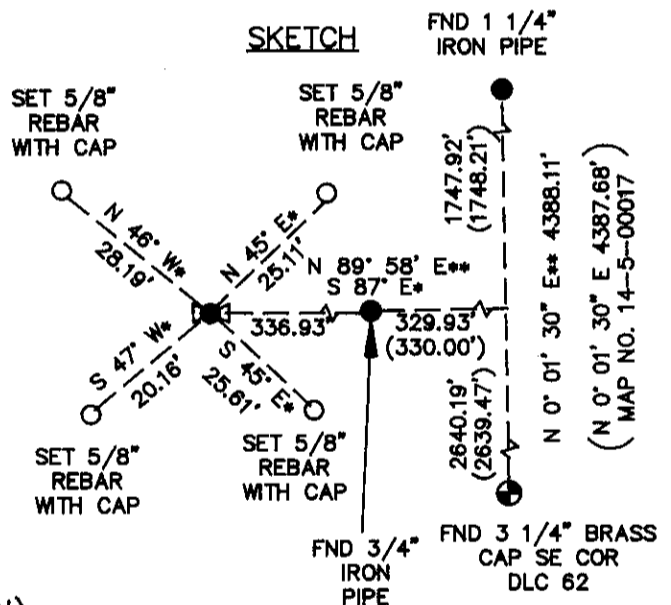
MONUMENT DETAIL



3 1/4" BRASS CAP



SKETCH



MONUMENT SET (PROCEDURES AND DESCRIPTION):

SET: 2" INSIDE DIAMETER X 36" LONG IRON PIPE WITH A 3 1/4" BENTON COUNTY BRASS CAP STAMPED AS SHOWN AT RECORD BEARING AND DISTANCE AS SHOWN ON MAP NO. 14-5-00017 FROM THE RECOVERED 3/4" PIPE. THE BRASS CAP IS 20" BELOW GROUND SURFACE.

NEW ACCESSORIES:

- SET: 5/8" X 30" REBAR WITH A YELLOW PLASTIC CAP MARKED "BENTON COUNTY SURVEYOR" 19" BELOW GROUND SURFACE BEARS N 45° E * 25.11 FEET.
- SET: 5/8" X 30" REBAR WITH A YELLOW PLASTIC CAP MARKED "BENTON COUNTY SURVEYOR" 22" BELOW GROUND SURFACE BEARS S 45° E * 25.61 FEET.
- SET: 5/8" X 30" REBAR WITH A YELLOW PLASTIC CAP MARKED "BENTON COUNTY SURVEYOR" 22" BELOW GROUND SURFACE BEARS S 47° W * 20.16 FEET.
- SET: 5/8" X 30" REBAR WITH A YELLOW PLASTIC CAP MARKED "BENTON COUNTY SURVEYOR" 20" BELOW GROUND SURFACE BEARS N 46° W * 28.19 FEET.
- SET: ORANGE FIBERGLASS "SURVEY MARKER" POST 0.8 FOOT WESTERLY.

NOTES:

- *=HAND COMPASS BEARING.
- **=BEARING BASED ON MAP NO. 14-5-00017.
- ()=RECORD INFORMATION FROM MAP NO. 14-5-00017.
- B.C.B.W. IS A BRASS WASHER STAMPED "BENTON COUNTY SURVEYOR". COMPASS DECLINATION IS 20° EAST. ALL MEASURED DISTANCES AND COMPASS BEARINGS ARE TO THE CENTER OF THE OBJECT, UNLESS OTHERWISE NOTED.

REGISTERED
 PROFESSIONAL
 LAND SURVEYOR

Danna L. Fehrenbacher

OREGON
 JULY 16, 1982
 DANNA L. FEHRENBACHER
 1995

FIRM/AGENCY: BENTON COUNTY PUBLIC WORKS
 ADDRESS: 360 S.W. AVERY AVE. CORVALLIS OR. 97333; PH. 757-6821
 PARTY CHIEF: CURTIS J. LIESENFELT
 CREW: MARK E. ANDERSON
 WITNESS: