

CORNER FILE TRACKING

H:\Survey\Corners\Misc\Filetrac.doc

11/23/98

CORNER NUMBER
145500340

STEP	HISTORY()	RESTORATION()
Form Prepared, DB	5/31/05	5/31/05
Field Inspection, DB	5/22/05	5/22/05
Form Checked, DB	7/5/05	7/5/05
Form Edited, DB	7/6/05	7/6/05
Form Signed, DB	7/6/05	7/6/05
Counter Index	5/31/05	5/31/05
GIS Index	5/31/05	5/31/05
Authorize Payment, DB	—————	—————
Archive Digital Files	7/7/05	7/7/05
Collect Documents	7/7/05	7/7/05
Scanned	7/8/05	7/8/05
Copy For Filming	7/7/05	7/7/05
Filed, DB		
Finish index (count unit)	5/22/05	5/22/05
Filmed (Archived), DB		

(DB) = Entry needed in database (Access).

COMMENTS:

DATE 05/31/2005

TOWNSHIP 14 SOUTH, RANGE 5 WEST, WILLAMETTE MERIDIAN; SECTION 22 CORNER E 1/4
DONATION LAND CLAIM NONE CORNER N/A**COMMON CORNER(S):**

WEST 1/4 SECTION 23

RECORDS (INFORMATION IN BOLD ITALICS IS COUNTY STAFFS' INTERPRETATION OF THE RECORD)

BASED ON EXTENSIVE RESEARCH AND RECOVERY OF EVIDENCE, THIS OFFICE HAS DETERMINED THAT MOST GENERAL LAND OFFICE SURVEYORS MEASURED TO THE FACE OF BEARING TREES.

- [01] GENERAL LAND OFFICE NOTES BY JAMES FREEMAN D. S., DATED JANUARY 23, 1853. *SET QUARTER SECTION POST FROM WHICH A W. OAK 18" DIA. BEARS S62°W, 17 LKS (11.22 FEET). A FIR 15" DIA. BEARS N58°E, 33 LKS (21.78 FEET).*
- [02] COUNTY SURVEY NO 569 (OLD NO. 254) FIELD NOTES (FIELD BOOK NO. 22 PG 9-13) BY W. C. GALLOWAY C. S., DATED OCTOBER 26, 1916. *SET 1 1/4" GALVANIZED PIPE 20" LONG FROM WHICH A FIR 15" BEARS N58°E, .33 CHS (21.78 FEET), A FIR 50" DIA. BEARS N18°E, 1.170 CHS (77.22 FEET).*
- [03] COUNTY RESTORATION BOOK NO. 1 PG 115 BY W. C. GALLOWAY C. S., DATED OCTOBER 26, 1916. *1/4 SECTION CORNER, SET 1 1/4" GALVANIZED PIPE 20" LONG, FIR 15" DIA. BEARS N58°E, .33 CHS (21.78 FEET), A FIR 50" DIA. BEARS N18°E, 1.170 CHS (77.22 FEET).*
- [04] COUNTY RESTORATION NO. 2238 BY W. C. GALLOWAY C. S., DATED OCTOBER 26, 1916. *THIS IS TRANSCRIBED FROM RECORD NO. [03] AND MAY CONTAIN ERRORS AND/OR OMISSIONS.*
- [05] COUNTY MAP NO. 14-5-00017 BY W. C. GALLOWAY C. S., DATED OCTOBER 30, 1916. *3/4" GALVANIZED PIPE.*
- [06] COUNTY SURVEY NO. 953 (OLD NO. 140) FIELD NOTES (FIELD BOOK NO 35 PG 2-9) BY W. C. GALLOWAY C. S., DATED JUNE 8, 1925. *BEGAN .250 CHS (16.5 FEET) SOUTH OF PIPE, THE 1/4 CORNER, BACKSIGHT 22 AND 23.*
- [07] COUNTY RESTORATION BOOK NO. 1 PG 115 BY W. C. GALLOWAY C. S., NO DATE GIVEN. *(ADDITIONS ADDED AT UNKNOWN DATE BY W. C. GALLOWAY C. S.) PIPE GONE, SET 3/4" PIPE 30" LONG.*
- [08] COUNTY MAP NO. 14-5-00011 BY NO NAME OR DATE GIVEN. *3/4" REPLACED, FOUND 1/2" PIPE .25 CHS (16.5 FEET) NORTH OF CLAIM LINE, A FIR 15" DIA. BEARS N58°E, .33 CHS (21.78 FEET), A FIR 60" DIA. BEARS N18°E, 1.17 CHS (77.22 FEET).*
- [09] COUNTY MAP NO. 14-5-00016 BY NO NAME OR DATED GIVEN. *1 1/2" PIPE REPLACED WITH 3/4" PIPE, 25 LKS (16.5 FEET) NORTH OF CLAIM LINE, FIR 50" N18°E, 1.17 CHS (77.22 FEET) A FIR 15" DIA. BEARS N58 1/2°E, .33 CHS (21.78 FEET).*
- [10] COUNTY SURVEY NO. 4105 BY JOHN F. GANNON P. L. S., DATED JULY 1965. *EAST 1/4 CORNER OF SECTION 22.*
- [11] COUNTY SURVEY NO. 7566 BY CHARLES N. LEONARD NO DATE GIVEN. *(THIS SURVEY WAS FOUND IN LINN COUNTY SURVEY FILES AND WAS SUBMITTED TO FILING BY B. OSBURN SHAW LINN COUNTY SURVEYOR DATED SEPTEMBER 20, 1983.) NO DESCRIPTION GIVEN.*

COMMENTS/LOCATION/ETC:**NOTES:**

THIS IS A MICROSOFT WORD 2000 DOCUMENT NAMED "45500340" CREATED FROM A BOILER PLATE DOCUMENT NAMED "HISTORY", WHICH HAS A STYLESHEET NAMED "CORNER" ATTACHED TO IT.

FIRM/AGENCY: BENTON COUNTY SURVEYOR'S OFFICE
ADDRESS: 360 S.W. AVERY AVE. CORVALLIS OR 97333; PH. 766-6821
RESEARCH BY: DAVID M. DEAN, P.L.S.
DATA ENTRY BY: ADAM CASALEGNO, SURVEY TECH.

BENTON COUNTY CORNER RESTORATION FORM, PAGE 1 OF 2 , 145500340R2

SEE CORNER HISTORY FORM FOR RECORDS ETC.

CORNER RESTORATION FIELD BOOK NUMBER 23 PAGE(S) 29

DATE 05/31/2005

TOWNSHIP 14 SOUTH, RANGE 5 WEST, WILLAMETTE MERIDIAN; SECTION 22 CORNER E 1/4

DONATION LAND CLAIM NONE CORNER N/A

CONDITION REPORT ; REFERENCED OUT ; RENEWED XX; SURVEYED IN

LOCATION AND COMMENTS:

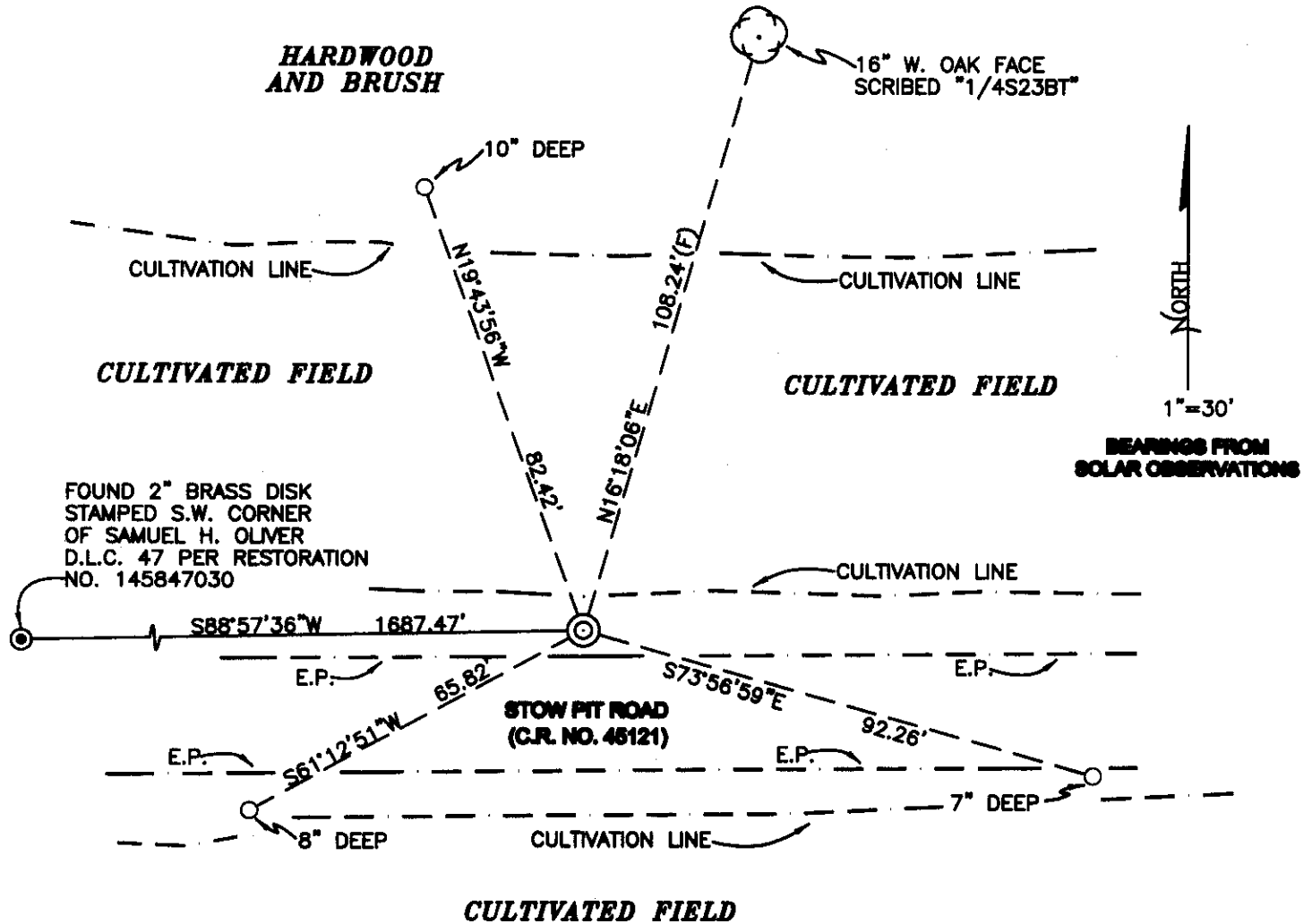
CORNER IS LOCATED APPROXIAMENTLY 4.5 FEET NORTH OF THE WEST BOUND LANE OF STOW PIT ROAD. TO REACH THE CORNER FROM THE JUNCTION OF OLD RIVER ROAD AND STOW PIT RD, TRAVEL WESTERLY ON STOW PIT RD FOR 0.11 MILES TO CORNER. CORNER IS GOOD FOR PREMARKING AND GPS CONTROL.

MONUMENTS AND ACCESSORIES FOUND (CONDITION AND SOURCE):

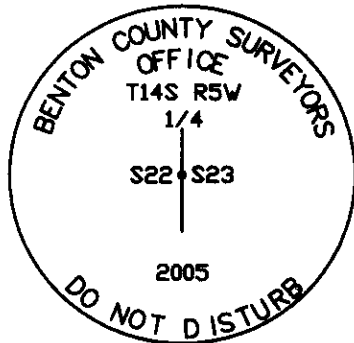
1. FOUND 3/4" X 30" BADLY RUSTED IRON PIPE FOR CORNER POSITION, 27" BELOW GROUND LEVEL.
(SET 1 1/4" GALVANIZED PIPE 20" LONG PER RECORDS [02] AND [03]).
(3/4" GALVANIZED PIPE PER RECORD [05]).
(1 1/4" PIPE GONE, SET 3/4" PIPE 30" LONG PER RECORD NO. [07]).
(1 1/2" PIPE REPLACED WITH 3/4" PIPE PER RECORD NO. [08]).
2. FOUND 2" BRASS DISK S88°57'36"W, 1687.47 FEET IN MONUMENT BOX STAMPED S. W. CORNER OF SAMUEL H. OLIVER PER RESTORATION NO. 145857030.
(1 1/4" PIPE, S89°12'24"W, 1688.36 FEET [CALCULATED] PER RECORD [08]).

MONUMENT SET (PROCEDURES AND DESCRIPTION):

HELD THE 3/4" IRON PIPE FOR TRUE CORNER POSITION. REMOVED 3/4" X 30" IRON PIPE AND SET 2" X 31 1/2" GALVANIZED IRON PIPE WITH A 3 1/4" BRASS DISK CONCRETED IN THE TOP AT SAME X,Y POSITION. NEW MONUMENT IS MARKED AS SHOWN ON PAGE 2 OF 2 AND 22" BELOW GROUND LEVEL. RESET 3/4" X 30" IRON PIPE ON WEST SIDE OF NEW MONUMENT IN VERTICAL POSITION AND 25" BELOW GROUND LEVEL. SET 6' ORANGE CARSONITE "SURVEY MARKER" POST 4' NORTH OF NEW MONUMENT.



MONUMENT DETAIL



3 1/4" BRASS DISK

LEGEND

- SET 5/8" X 30" REBAR WITH YELLOW PLASTIC CAP MKD "BENTON COUNTY SURVEYOR"
- (F) MEASUREMENT TO FACE
- ⊙ GOVERNMENT MONUMENT SET AS SHOWN
- ⊙ GOVERNMENT MONUMENT FOUND AS SHOWN
- ⊙ BEARING TREE AS NOTED
- E.P. EDGE OF PAVEMENT
- C.R. COUNTY ROAD NUMBER

NEW ACCESSORIES:

1. SET REBAR (SEE LEGEND) 7" BELOW GROUND LEVEL S73°56'59"E, 92.26 FEET.
2. SET REBAR (SEE LEGEND) 8" BELOW GROUND LEVEL S61°12'51"W, 65.82 FEET.
3. SET REBAR (SEE LEGEND) 10" BELOW GROUND LEVEL N19°43'56"W, 82.42 FEET.
4. 16" W. OAK FACE SCRIBED "1/4S23BT" N16°18'06"E, 108.24 FEET TO FACE. SET ALUMINUM NAIL AND PLASTIC WASHER IN BOTTOM OF BLAZE FOR DISTANCE AND ANGLE MEASUREMENT.

NOTES:

COMPASS DECLINATION IS 20° EAST. ALL MEASURED DISTANCES AND BEARINGS ARE TO THE CENTER OF THE OBJECT, UNLESS OTHERWISE NOTED. ALL BEARING TREES ARE PAINTED AND HAVE A B.T. TAG ATTACHED, FACING THE CORNER UNLESS OTHERWISE NOTED. ALL NEW BEARING TREES HAVE A PLASTIC WASHER (STAMPED "BENTON COUNTY SURVEYOR CORNER RESTORATION") ATTACHED (BY ALUMINUM NAIL) TO THE FACE, BELOW THE "BT" FOR DISTANCE AND ANGLE MEASUREMENT UNLESS OTHERWISE NOTED. THE DRAWING IS FROM AUTOCAD RELEASE 2002.

THIS RESTORATION WAS PERFORMED AT THE DIRECTION AND APPROVAL OF THE BENTON COUNTY SURVEYOR. *[Signature]*

FIRM/AGENCY: BENTON COUNTY SURVEYOR'S OFFICE
ADDRESS: 360 S.W. AVERY AVE. CORVALLIS OR 97333; PH. 766-6821
PRESENT: DAVID M. DEAN, P.L.S. AND ADAM CASALEGNO, SURVEY TECH.
EQUIPMENT: LEICA TCR 1105 WITH TDS ON BOARD

REGISTERED
 PROFESSIONAL
 LAND SURVEYOR

7/5/05 *David M. Dean*

OREGON
 JULY 13, 1984
 DAVID M. DEAN
 2090

RENEWAL DATE: 12/31/05

Witnesses Albert, Tom & Martin Goracke & J.L. Prohaska Oct. 25, 1916.

W.C. corner on S. bank of Old Will. River 2.1455 chs. N. of 1/4 cor. bet. 23 & 24 T. 14-5.

- Set 1" I pin 40" long
- Ash 9" in dia. bears N. 51° 45' E. .229 chs.
- Pine 20" " " " S. 67° E. .20 " stump std.
- " 24" " " " N 60° W. .15 " "

Witnesses as above Oct. 24, 1916.

1/4 sec. cor. between secs. 23 & 24 T. 14 S. R. 5 W.

- Set 1 1/4" pipe at proportionat distance on sec. line.
- Fir 34" in dia. bears S. 7° E. 12.78 chs.
- " 26" " " " N 89° 10' W. 1.823 "

Witnesses as above Oct. 26, 1916.

Corner to secs. 23, 24, 25 & 26 T. 14 S. R. 5 W.

- Set 1 1/4" x 24" I rod. Run lines both ways to 1/4 cor. with assistance of Chas. Leonard
- Balm 28" in dia. bears N. 36° 30' E. 6.00 chs.
- " 24" " " " S. 72° 30' E. 5.20 "
- " 30" " " " N 57° W 8.60 " Irons set fir W.C. cor.

Witnesses A. & Tom Goracke, Chas. Leonard et al. Oct. 27, 1916.

1/4 sec. cor. between secs. 25 & 26 T. 14 S. R. 5 W.

- Set a branding iron H, 20" long ash stump std.
- Ash 14" in dia. bears N. 82° 30' E. 6.46 chs.
- Balm 13" " " " S. 17° E. .31 " std.

Witnesses A, Martin & Tom Goracke, J.L. Prohaska et al. Oct. 25, 1916.

S.E. cor. of S.H. Oliver D.L.C. # 47 T. 14 S. R. 5 W.

- Set a 1" x 1" I also 1/2" pipe 30' north.
- Pine 20" in dia. bears S. 63° 30' E. 4.94 chs. std.
- Oak 20" " " " N. 62° 30' W 5.71 " "

Witnesses A. & Tom Goracke, J.E. Prohaska et al. Oct. 26, 1917.

1/4 sec. cor. between secs. 22 & 23 T. 14 S. R. 5 W.

- Set 1 1/4" galv. pipe 20" long. Pipe gina, Set 1/4" Pipe 30" long
- Fir 15" in dia. bears N 58° E. .33 chs. std.
- " 50" " " " N. 18° E. 1.170 "

Witnesses same as last corner. Oct. 26, 1916. Bee's nest in yard 87 on bank

$\frac{1}{4}$ -Section corner between sections 22 and 23, Twp. 14 S., R. 5 W. 2238

Reestablishment by W. C. Galloway

October 26, 1916

Set $1\frac{1}{4}$ " galvanized pipe 20" long, Pipe gone, Set $\frac{3}{4}$ " pipe 30" long.

Fir 15" in diam bears N $58\frac{1}{2}^{\circ}$ E

.33 chains (standing)

Fir 50" in diam bears N 18° E

1.170 chains (standing)

Witnesses A. and Tom Goracke, J. E. Prohaska, Et. Al.

145 500350

REMONUMENTING 1/4 22/23 T145 R5W

FD BADLY RUSTED 3/4" x 30" I.P. 27" BELOW

GROUND LEVEL, FIRMLY SET IN PLUMB

POSITION, 7 1/2' N OF NLY EDGE PAVEMENT

NO GLO OR C.S. ACCESSORIES REMAIN

HELD 3/4" I.P. FOR TRUE COR POSITION.

REMOVED 3/4" x 30" I.P. & AT SAME X,Y

POSITION SET 2" x 3 1/2" G.Z.P. W/3 1/4"

BRASS DISK CONC. IN TOP 22" BELOW

GROUND LEVEL, MARKED AS SHOWN

RESET 3/4" x 30" I.P. ON WEST SIDE

OF NEW MON IN VERT. POSITION &

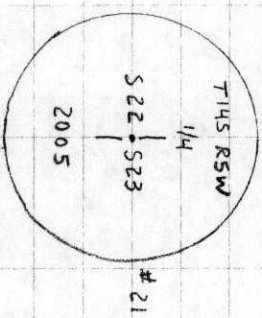
25" BELOW GROUND LEVEL. SET 6' ORANGE

CARBONITE "SURVEY MARKER" POST 4' N

OF NEW MON

-17-21 21) AS SET 1/4 22/23
3 1/4" BRASS DISK

21-2 Come. 024 LEFT. 011



CLEAR, WARM
70° F @ 11:00 AM
29.9" Hg
LEICA TCR 1105/TDS

5/24/05
D. DEAN
A. COSALEGNO

23/29

