

C.S. 255

1/4 sec. cor. between secs. 14 + 23 T. 14S. R. 5W.

Set 7/8" x 24" I. rod:
Pine 30" in dia. bears N. 8° E. 172 obs. std. burnt inside.
Oak 12" " " S. 25° E. 42 " " remkd.
" 20" " " N. 18° W. 440 "

Witnesses Tom + A. Gromke, J.E. Prohaske + one other Oct. 27, 1916.

C.S. #12
Continued
by W.C. Gilhroy

1/4 sec. cor. bet. secs. 25 + 36 T. 14S. R. 5W.

Set L iron 4' long set on sec. line 1/2 bet. sec. cor.
Maple 32" in dia. bears S. 89° 50' W. 2.593 obs.
" 36" " " N. 71° 35' W. 3.126 "

Witnesses J.E. Prohaske et al. Oct. 28, 1916.

Corner to secs. 25, 26, 35 + 36 T. 14S. R. 5W.

Set a 7/8" pipe, rocks piled against pipe. set pipe where stake was.
Ash 14" in dia. bears S. 40° 40' E. 1.003 obs.
Maple 14" " " S. 58° 30' W. .910 "
" 26" " " N. 38° W. 490 "
" stump S. 3° E. .14 " shading.

Witnesses M.D. Harpool + son. June 1917.

C.S. #255
by W.C. Gilhroy

Corner to secs. 14, 15, 22 + 23 T. 11S. R. 6W.

Re set a stone 9" x 12" x 24" which was moved or set in wrong position.
Oak 24" in dia. bears N. 42° E. 4.855 (checkup shows this ^(by Geo. Mercer) should be here because
" 10" " " S. 70° E. 10.65 obs. std.
" 14" " " N. 41° W. 3.35 " " Remkd.

Claim corner. N. 0° 06' W. 4.08 obs.

Witness James E. Mc Donough Nov. 1916.

1/4 sec. cor. between secs. 14 + 15 T. 11 S. R. 6 W.

Set stone 10" x 10" x 32", 20" in ground. Stone set by Mercer had been
Oak 36" in dia. bears S. 31° E. 5.553 obs. Ward according to C.E. Jackson
Maple 14" " " N. 72° W. 2.613 " Oak die + ash stump partly
+ in face of rock? ash size bears N. 29° 03' E. 2.142 obs.

Witnesses James E. Mc Donough, A.C. Johnson + C.E. Jackson Nov. 1916.

1/4 sec. cor. between secs. 14 + 23 T. 11 S. R. 6 W.

Set Stone 6" x 10" x 18" one tree gone:
Oak 6" in dia. bears S. 54° 58' W. .616 obs.
" 8" " " N. 46° 30' W. .92 " std.

Witnesses J.E. Mc Donough + A.C. Johnson Nov. 14, 1916.

Corner to secs. 13, 14, 22 + 24 T. 11 S. R. 6 W.

Set 7/8" x 25" galv. pipe
Pine 4" in dia. bears N. 55° 45' E. .78 obs. std. 40" in dia.
" 24" " " S. 26° 30' E. .985 "
" 24" " " S. 40° 30' E. .265 "
" 4" " " N. 7° " " " 70" in dia.
" 15 36 " " " " "

$\frac{1}{4}$ -Section corner between sections 14 and 23, Twp. 14 S., R. 5 W. 2230

Reestablishment by W. C. Galloway

October 27, 1916

Set $\frac{5}{8}$ " x 24" I rod

Pine 30" in diam bears N 2° E

Oak 12" in diam bears S 25° E

Oak 20" in diam bears N 10° W

1.72 chains(standing)

.42 chains(std.remkd)

.440 chains

Witnesses Tom and A. Goracke, J. E. Prohaska

BENTON COUNTY CORNER RESTORATION FORM 145540400 4070

TOWNSHIP 14 SOUTH, RANGE 5 WEST, WILLAMETTE MERIDIAN; SECTION 14 CORNER S 1/4
 DONATION LAND CLAIM _____ CORNER _____

DATE 5/14/92 CORNER RESTORATION FIELD BOOK NUMBER 12 PAGE(S) 23
 _____ CONDITION REPORT ONLY; _____ REFERENCED OUT; XX RENEWED; _____ SURVEYED IN

LOCATION AND COMMENTS:

THE CORNER IS LOCATED NEAR THE TOP OF A SMALL RISE IN A CULTIVATED FIELD, 15 FEET SOUTHERLY FROM AN EAST-WEST CULTIVATION BREAK LINE BETWEEN TWO FIELDS.

PREVIOUS RENEWALS/SURVEYS, ETC.:

- [01] ORIGINAL GLO SURVEY BY KIMBALL WEBSTER DATED MAY 5, 1853.
- [02] COUNTY SURVEY NO. 569 BY W.C. GALLOWAY DATED OCTOBER 27, 1916.
- [03] OLD CORNER RESTORATION BOOK NO. 1 PAGE 116 BY W.C. GALLOWAY DATED OCTOBER 27, 1916.
- [04] CORNER RESTORATION NO. 2230 BY W.C. GALLOWAY OCTOBER 27, 1916.
- [05] MAP NO. 14-5-00017 BY W.C. GALLOWAY DATED OCTOBER 30, 1916.
- [06] MAP NO. 14-5-00011 BY BENTON COUNTY SURVEYOR'S OFFICE (NO DATE GIVEN).
- [07] COUNTY SURVEY NO. 7566 BY CHARLES LEONARD (NO DATE GIVEN).
- [08] MAP NO. 14-5-00027 BY BENTON COUNTY SURVEYOR'S OFFICE DATED FEBRUARY 1, 1936.

MONUMENTS AND ACCESSORIES FOUND (CONDITION AND SOURCE):

- FOUND: 3/4" X 30" IRON ROD , 6" BELOW GROUND SURFACE, WITH THE TOP 18" BENT APPROXIMATELY 1 FOOT EASTERLY, FOR THE CORNER (3/4" X 24" IRON ROD AS PER [2]). WILL USE THE STRAIGHT BASE OF SAID ROD FOR THE CORNER POINT.
 - FOUND: 3/4" X 2" X 24" CHANNEL IRON WITH A JAGGED TOP, 20" BELOW GROUND SURFACE, BEARS N 70° E 0.45 FEET. THERE IS NO RECORD OF THIS BEING SET OR RECOVERED. IT APPEARS TO BE A BROKEN-OFF GUARD FOR THE CORNER. NOT SHOWN ON SKETCH.
 - FOUND: SMALL PIECES OF ROTTED CHARRED WOOD AND BROKEN GLASS IN THE HOLE EXCAVATED FOR THE CORNER.
 - FOUND: A CONCRETE POST 8" IN DIAMETER, 2 FEET HIGH, BEARS, N 88° 29' 15" W 683.59 FEET (1 1/4" PIPE, N 89° 29' W 683.76 FEET AS PER [5]). THERE IS NO RECORD OF THIS CONCRETE POST BEING SET OR RECOVERED.
 - FOUND: 3 1/4" BENTON COUNTY BRASS CAP AT THE SOUTHEAST CORNER OF DLC 46 AS PER CORNER RESTORATION NO.4069, BEARS S 88° 48' 50" E 509.06 FEET (WAGON THIMBLE, S 89° 51' E 509.06 FEET AS PER [6]).
- NO OTHER RECORD BEARING OBJECTS WERE RECOVERED.

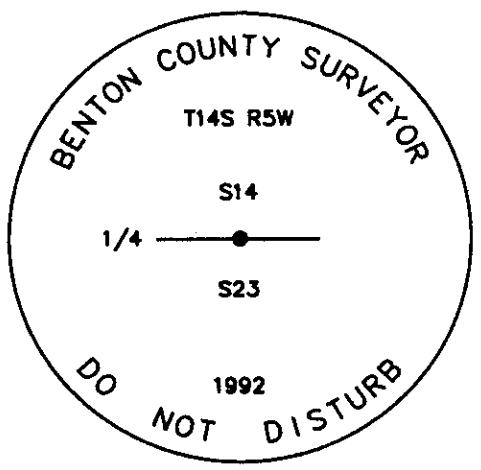
MONUMENT SET (PROCEDURES AND DESCRIPTION):

SET: 2" INSIDE DIAMETER X 36" LONG IRON PIPE WITH A 3 1/4" BENTON COUNTY BRASS CAP, STAMPED AS SHOWN, 18" BELOW GROUND SURFACE AND IN THE SAME COORDINATE POSITION AS THE STRAIGHT BASE OF THE RECOVERED, BENT 3/4" IRON ROD.

NEW ACCESSORIES:

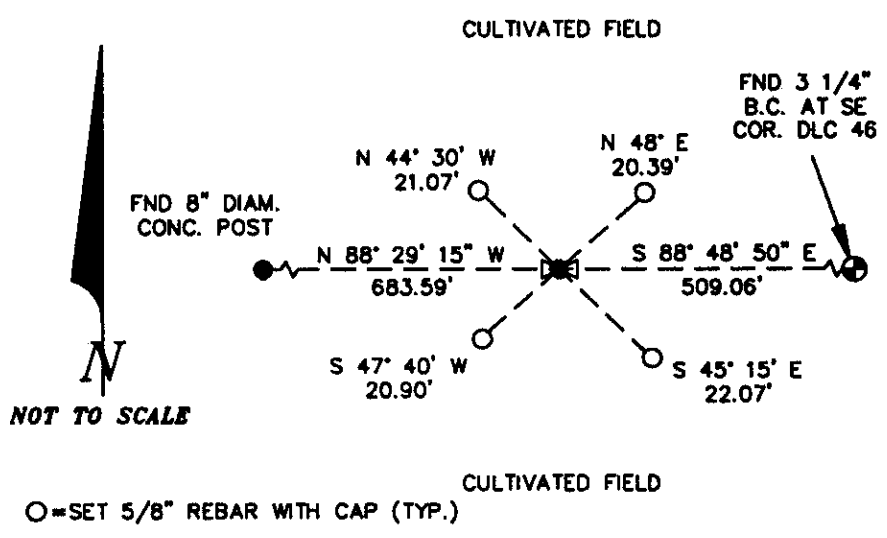
- SET: 5/8" X 30" REBAR WITH A YELLOW PLASTIC CAP MARKED "BENTON COUNTY SURVEYOR", 18" BELOW GROUND SURFACE, BEARS N 48° E 20.39 FEET. THE REBAR IS ON AN EAST-WEST CULTIVATION BREAK LINE BETWEEN TWO FIELDS.
- SET: 5/8" X 30" REBAR WITH A YELLOW PLASTIC CAP MARKED "BENTON COUNTY SURVEYOR", 18" BELOW GROUND SURFACE, BEARS S 45° 15 E 22.07 FEET.
- SET: 5/8" X 30" REBAR WITH A YELLOW PLASTIC CAP MARKED "BENTON COUNTY SURVEYOR", 18" BELOW GROUND SURFACE, BEARS S 47° 40' W 20.90 FEET.
- SET: 5/8" X 30" REBAR WITH A YELLOW PLASTIC CAP MARKED "BENTON COUNTY SURVEYOR", 18" BELOW GROUND SURFACE, BEARS N 44° 30' W 21.07 FEET. THE REBAR IS ON AN EAST-WEST CULTIVATION BREAK LINE BETWEEN TWO FIELDS.
- SET: ORANGE FIBERGLASS "SURVEY STAKE" POST 15 FEET NORTHERLY.

MONUMENT DETAIL



3 1/4" BRASS CAP

SKETCH



NOTES:

B.C.B.W. IS A BRASS WASHER STAMPED "BENTON COUNTY SURVEYOR". COMPASS DECLINATION IS 20' EAST. ALL MEASURED DISTANCES AND COMPASS BEARINGS ARE TO THE CENTER OF THE OBJECT, UNLESS OTHERWISE NOTED.

THIS RESTORATION WAS PERFORMED AT THE DIRECTION AND APPROVAL OF THE BENTON COUNTY SURVEYOR. *df*

FIRM/AGENCY: BENTON COUNTY SURVEYOR
ADDRESS: 360 S.W. AVERY AVE. CORVALLIS OR 97333; PH. 757-6821
SURVEY CREW: CURTIS J. LIESENFELT/MARK E. ANDERSON

**REGISTERED
 PROFESSIONAL
 LAND SURVEYOR**

Curtis J. Liesenfelt

**OREGON
 JULY 17, 1986
 CURTIS J. LIESENFELT
 2213**