

C.S. # 254 Corner to sections 13, 14, 23 & 24 T. 14 S. R. 5 W.

Set a gunbbl. 22 gauge yew stake. East side.
Maple 14" in dia. bears N. 39° E. .496 chs.
Ash 12" " " " S. 10° W. .107 " std.
Maple 16" " " " N 67° W .45 " "
" 12" " " " N 2° 30' E. .534 " "

Witnesses Albert, Tom & Martin Goracke & J. L. Prohaska Oct. 25, 1916.

W.C. corner on S. bank of Old Will. River 21.455 chs. N. of 1/4 cor. bet. 23 & 24

Set 1" I. pin 40" long T. 14-5.
Ash 9" in dia. bears N. 51° 45' E. .229 chs.
Pine 20" " " " S. 67° E. .20 " stump std.
" 24" " " " N 60° W. .15 " "

Witnesses as above Oct. 24, 1916.

1/4 sec. cor. between secs. 23 & 24 T. 14 S. R. 5 W.

Set 1 1/4" pipe at proportionat distance on sec. line.
Fir 34" in dia. bears S. 7° E. 1.278 chs.
" 26" " " " N 89° 10' W. 1.823 "

Witnesses as above Oct. 26, 1916.

Corner to secs. 23, 24, 25 & 26 T. 14 S. R. 5 W.

Set 1 1/4" x 24" I rod. Run lines both ways to 1/4 cor. with assistance of Chas. Leonard
Balm 28" in dia. bears N. 36° 30' E. 600 chs.
" 24" " " " S. 72° 30' E. 520 "
" 30" " " " N 57° W. 860 " Irons set for W.C. cor.

Witnesses A. & ^{Tom} Martin Goracke, Chas. Leonard et al. Oct. 27, 1916.

1/4 sec. cor. between secs. 25 & 26 T. 14 S. R. 5 W.

Set a branding iron H, 20" long ash stump std.
Ash 14" in dia. bears N. 82° 30' E. .646 chs.
Balm 13" " " " S. 17° E. .31 " std.

Witnesses A, Martin & Tom Goracke, J. L. Prohaska et al Oct. 25, 1916.

S.E. cor. of S.H. Oliver D.L.C. # 47 T. 14 S. R. 5 W.

Set a 1" x 1" I also 1/2" pipe 30' north.
Pine 20" in dia. bears S. 63° 30' E. 4.94 chs. std.
Oak 20" " " " N. 62° 30' W 5.71 " "

Witnesses A. & Tom Goracke, J.E. Prohaska et al. Oct. 26, 1917.

1/4 sec. cor. between secs. 22 & 23 T. 14 S. R. 5 W.

Set 1 1/4" galv. pipe 20" long. Pipe gone. Set 3/4" pipe 30" long
Fir 15" in dia. bears N 58 1/2° E. .33 chs. std.
" 50" " " " N. 18° E. 1.170 "

Witnesses same as last corner. Oct. 26, 1916. Bee's nest in tree BT on bank

W. C. corner on S. bank of Old Willamette River 21.445 chains N of ~~2243~~ ²²⁴³ corner
between sections 23 and 24, Twp. 14 S., R. 5 W.

Reestablishment by W. C. Galloway

October 24, 1916

Set 1" I pin 40" long

Ash 9" in diam bears N 51° 45' E

.229 chains

Pine 20" in diam bears S 67° E

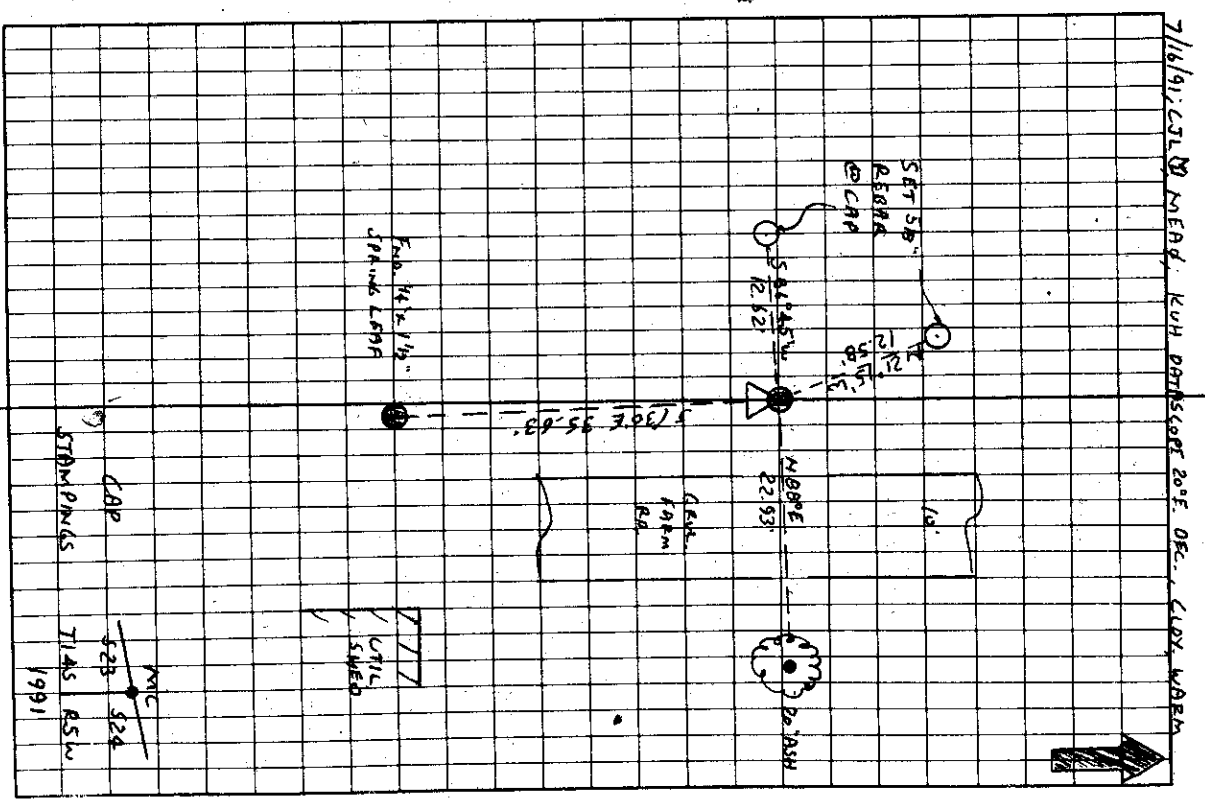
.20 ch (stump standing)

Pine 24" in diam bears N 60° W

.15 chains (standing)

Witnesses Albert, Tom, and Martin Govack and J. L. Prohaska

	T145 R5W SEC. 23 LEFT BANK M.C.			
	END: 7/8" IRON ROD 5" D.G.S FOR THE COR. (1" 45#589)			
"	14' x 1 1/2" SPRINGS LEFT BEARS S 1° 30' E ~ 35.63'. (40 SOUTH 34.06 CS# 233). THE SPRING IS ON THE S SIDE OF A SMALL CLUMP OF BUCK HAWTHORN BUSHES & IS LEANING SLIGHTLY E. TIED THE TOP STR.			
	NO OTHER RECORD BEARINGS OBJECTS WERE RECOVERED.			
No				
	SET: 2" 1.0 x 3.8" LONG IRON PIPE @ D 3 1/4" BEN. CO. B.C. STABBED AS SHOWN, CENTERED OVER THE RECOVERED 7/8" 1. ROD.			
"	5/8" x 36" REBAR @ A.Y.P.C. MKD. "BENTON COUNTY SURVEYOR" BEARS S 86° 45' W ~ 12.62'			
"	5/8" x 36" REBAR @ A.Y.P.C. MKD. "BENTON COUNTY SURVEYOR" BEARS N 21° 15' W ~ 12.58'			
"	AN ASH 26" IN DIAM. BEARS N 88° E ~ 22.93', FENCED & SCRIBED "MC 524 BT" SET A PK & B.C.B.W. IN THE 3 1/4" BASE. SET A B.T. TAP ON THE W 1/4 FACE.			
	SET ORANGE FIBERGLASS "SURVEY STAKE" POST 1 1/2" IN THE COR. IS LOCATED AT THE TOP OF A CUT BANK 4' HIGH, 10.5' W 1/4 FROM THE E OF AN ACTIVE 10' WIDE GRUL FURA RD & 38.5' NW 1/4 FROM THE NW COR. OF A WOODED FRAGMENT UTIL. SHELLED IT ANDY DEOR FOR PREMARKING & GPS CONTROL.			
1/2 112w				
1/1 1655				



10/45

145600.362

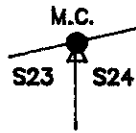
BENTON COUNTY CORNER RESTORATION FORM

3964

TOWNSHIP 14 S RANGE 5 W SECTION 23 D.L.C. CORNER M.C.
DATE 7/16/91 CORNER RESTORATION FIELD BOOK NUMBER 10 PAGE(S) 45

CORNER DESIGNATION:

THE MEANDER CORNER ORIGINALLY ESTABLISHED ON THE LEFT BANK OF THE WILLAMETTE RIVER IN, T 14 S, R 5 W, WILLAMETTE MERIDIAN.



- CONDITION REPORT ONLY
- REFERENCED OUT
- RENEWED
- SURVEYED IN

LOCATION AND COMMENTS:

THE CORNER IS LOCATED AT THE TOP OF A 4 FOOT HIGH CUT BANK, 10.5 FEET WESTERLY FROM THE CENTERLINE OF AN ACTIVE, GRAVEL FARM ROAD, 10 FEET WIDE AND 38.5 FEET NORTHWESTERLY FROM THE NORTHWEST CORNER OF A WOODEN FRAMED UTILITY SHED.

PREVIOUS RENEWALS/SURVEYS, ETC:

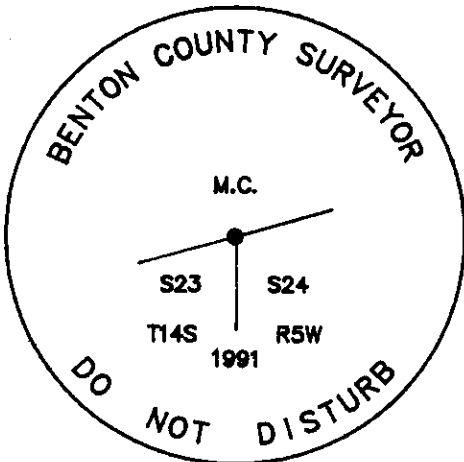
- ORIGINAL GLO SURVEY BY KIMBALL WEBSTER DATED MAY 5, 1853.
- COUNTY SURVEY NO. 569 BY W.C. GALLOWAY DATED OCTOBER 24, 1916.
- OLD CORNER RESTORATION BOOK NO. 1 PAGE 115 BY W.C. GALLOWAY DATED OCTOBER 24, 1916.
- CORNER RESTORATION NO. 2242 BY W.C. GALLOWAY DATED OCTOBER 24, 1916.
- MAP NO. 14-5-00011 BY UNKNOWN PERSON (NO DATE GIVEN).
- MAP NO. 14-5-00017 BY W.C. GALLOWAY DATED OCTOBER 30, 1916.
- COUNTY SURVEY NO. 1053 BY WALTER W. LARSEN DATED JANUARY 20, 1928.
- COUNTY SURVEY NO. 1791 BY CURTIS C. HANSON (NO DATE GIVEN).
- COUNTY SURVEY NO. 2331 BY W.C. GALLOWAY DATED FEBRUARY 1, 1936.
- COUNTY SURVEY NO. 7566 BY CHARLES H. LEONARD (NO DATE GIVEN).

MONUMENTS AND ACCESSORIES FOUND (CONDITION AND SOURCE):

- FOUND: 7/8" IRON ROD, 5" ABOVE GROUND SURFACE FOR THE CORNER (1" IRON ROD COUNTY SURVEY NO. 569).
- FOUND: 1/4" X 1 1/2" SPRING LEAF, BEARS S 1° 30' E 35.63 FEET (SOUTH 34.08 FEET COUNTY SURVEY NO. 2331). THE SPRING IS ON THE SOUTH SIDE OF A SMALL CLUMP OF BLACK HAWTHORN BUSHES AND IS LEANING SLIGHTLY EAST. TIED THE TOP CENTER.

NO OTHER RECORD BEARING OBJECTS WERE RECOVERED.

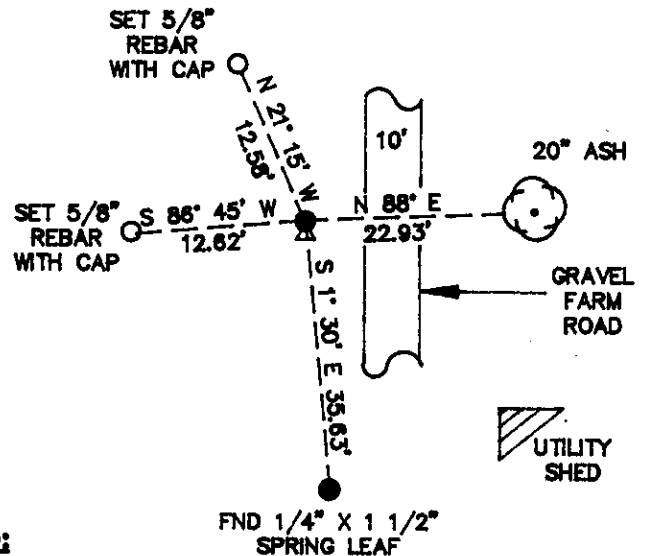
MONUMENT DETAIL



3 1/4" BRASS CAP



SKETCH



MONUMENT SET (PROCEDURES AND DESCRIPTION):

SET: 2" INSIDE DIAMETER X 36" LONG IRON PIPE WITH A 3 1/4" BENTON COUNTY BRASS CAP, STAMPED AS SHOWN, CENTERED OVER THE RECOVERED 7/8" IRON ROD.

NEW ACCESSORIES:

- SET: 5/8" X 30" REBAR WITH A YELLOW PLASTIC CAP MARKED "BENTON COUNTY SURVEYOR" BEARS S 86° 45' W 12.62 FEET.
- SET: 5/8" X 30" REBAR WITH A YELLOW PLASTIC CAP MARKED "BENTON COUNTY SURVEYOR" BEARS N 21° 15' W 12.58 FEET.
- AN ASH 20" IN DIAMETER BEARS N 88° E 22.93 FEET, FACED AND SCRIBED "MC S24 BT". SET A PK NAIL AND B.C.B.W. IN THE SOUTHERLY BASE. SET A B.T. TAG ON THE WESTERLY FACE.
- SET: ORANGE FIBERGLASS "SURVEY STAKE" POST 1 FOOT EASTERLY.

NOTES:

B.C.B.W. IS A BRASS WASHER STAMPED "BENTON COUNTY SURVEYOR". COMPASS DECLINATION IS 20° EAST. ALL MEASURED DISTANCES AND COMPASS BEARINGS ARE TO THE CENTER OF THE OBJECT, UNLESS OTHERWISE NOTED.

THIS RESTORATION WAS PERFORMED AT THE DIRECTION AND APPROVAL OF THE BENTON COUNTY SURVEYOR. *[Signature]*

FIRM/AGENCY: BENTON COUNTY SURVEYOR
ADDRESS: 300 S.W. AVERY AVE. CORVALLIS OR. 97333; PH. 757-6821
SURVEY CREW: CURTIS J. LIESENFELT & MARK E. ANDERSON
WITNESS:

REGISTERED PROFESSIONAL LAND SURVEYOR

Curtis J. Liesenfelt

OREGON
JULY 17, 1986
CURTIS J. LIESENFELT
2213