

C.S. 140. S.E. corner Wm. W. Dows Cl. 45 T14S R5W.
+ 254 = 1/4 cor. Set 3/4" pipe 12" under surface.
Fence south .339 chains
Telephone pole S.E. 476

S.E. cor. Hse. N76°24'E
N.E. cor. School hse. S31°47'E
W. comb barn S47°9'E
S.E. cor. Hse. S79°22'1/2"W.
Cor. fence S. of road S72°19'E. 1206

N.E. cor. Wm. W. Dows. Cl. 45 T14S R5W.
Set 1/4" pipe
pipe south 7.33 chains

1/4 sec. cor. between sec's. 11 + 14 T14S R5W
Set 1/2" pipe from which a
1/2" pipe bears N89°48'E 7.58 chains

N.E. corner Joseph M. Lafferty Cl. 46 T14S R5W
Set 1/2" pipe from which
12" Oak post S47°W. 3.55 chains.
NW corner House S36 1/2°E. 1.566 "
Fence North .136 "

1/4 corner between sections 13 + 14 T14-S
Set plow shear stake + stone (Bulldozed out
by V. Volker)
Fir 30" dia bears N78°E. 3.52 chains
Pine 24" " " S. 1°E. 1.15 "
" 30" " " N87°W. 1.58 "
Reset a 3/4" rod with Model T transmission over ^{stake} No Trees

N.W. corner Geo. Coffee Cl. 68 T14S R5W
Set pipe

N.E. corner Isaac Winkle Cl. 47 T. 13S. R6W.
Set 3/4" iron rod
Corner post 14" in dia. bears S.W. .010 chs.
Oak 14" in diameter bears south 2.958 "

5/21/1907
1/25/1905

Shanghai Bldg Co.
at Devit
W. M. Lamm

1/4 Cor betw. Secs. 2 + 11 T11S R7W. W.M.
Set fir limb
Fir 8" in dia. bears. N38°E .16 chs.
Fir 36" dia " " N15°W. 1.88 " std.

N.E. cor. Wesley Kelley Cl. 41 T11S R7W. W.M.
Set Stone 6x10x14"
Oak 30" in dia bears S38 1/2°W .81 chs. dist
Fir 20" " " " N87°E .79 " "

N.W. cor. Wesley Kelley Cl. 41 T11S R7W. W.M.
Set 1" pipe, 1" pipe E. 20' and a 1" pipe W. 20'
Slump bears S46 1/2°E. 1.77 chs.
Post East .02 "
Cor Post East .23 "

1/15

1/11

1/4-Corner between sections 13 and 14, Twp. 14-5

2229

Reestablishment by ~~W. C. Galloway~~ *

Date * 6/28/1925

Set plow shear, stake and stone

Fir 30" in diam bears N 78° E

.352 chains

Pine 24" in diam bears S 1° E

1.15 chains

Pine 30" in diam bears N 87° W

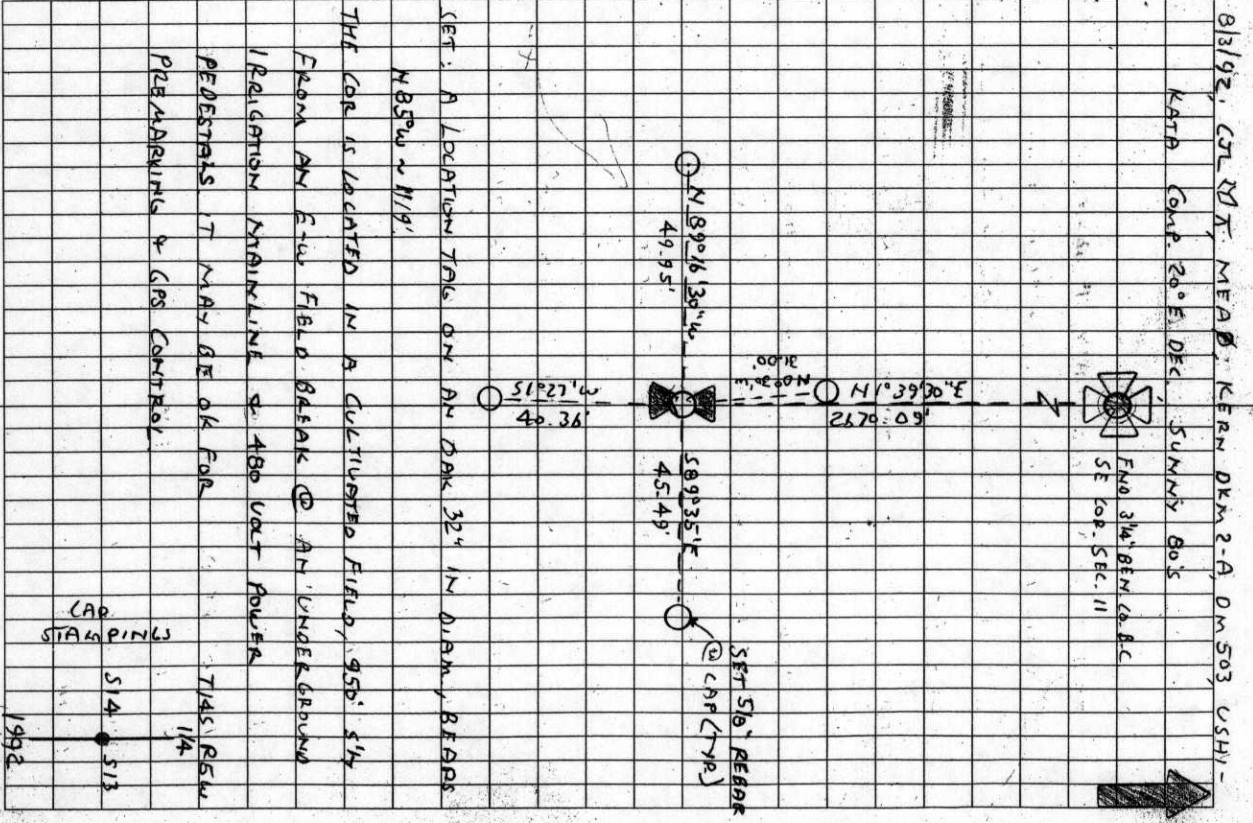
1.58 chains

--- * WALTER W. LARSEN, SEE FIELD BOOK NO. 35, INSIDE COVER AND PAGE 285 (CJL 5/6/1992)

Plow shear, stake and stone bulldozed out, reset a 1/2" rod with Model T transmission over, 12" beneath the surface, no trees.

CURTIS C. HANSON, 7/9/1946, SEE FIELD BOOK NO. 100, PAGE 13 (CJL 5/6/1992).

T 145 R 5 W SEC 13 W 1/4 COR
 FND 3/4" 1.800 19" BGS FOR THE COR (3/4" ROD AS PER [67])
 A PARTLY BROKEN ASSEMBLY OF GEARS & PLATES WITH SET DIRECTLY OVER THE RECOVERED 3/4" ROD, 17" BGS (MODEL T TRANSMISSION OVER 3/4" ROD 12" BGS AS PER [77])
 NO OTHER RECORD BEARING OBJECTS WERE RECOVERED
 SET: 2" 1.0 x 36" LONG IRON PIPE @ A 3/4" BENTON CO. B.C. STAMPED AS SHOWN, 10" BGS, & CENTERED OVER THE RECOVERED 3/4" ROD BURIED THE RECOVERED GEAR & PLATE ASSEMBLY HORIZONTALLY ALONG THE N 1/4 SIDE OF THE NEW MORN
 FND: 3/4" BENTON CO. B.C. & THE SEC COR OF SEC 11 AS PER COR. REPT. NO. 4068 BEARS N 10° 29' 30" E ~ 2870.09' (N 00° 03' W ~ 2869.30' AS PER [9])
 SET: 5/8" x 30" REBAR @ N.Y.P.C. MKD "BENTON COUNTY SURVEYOR" 19" BGS, BEARS N 0° 30' W ~ 31.00'
 5/8" x 30" REBAR @ N.Y.P.C. MKD "BENTON COUNTY SURVEYOR" 20" BGS, BEARS S 89° 35' E ~ 45.49'
 5/8" x 30" REBAR @ N.Y.P.C. MKD "BENTON COUNTY SURVEYOR" 18" BGS, BEARS S 1° 27' W ~ 40.36'
 5/8" x 30" REBAR @ N.Y.P.C. MKD "BENTON COUNTY SURVEYOR" 18" BGS BEARS N 89° 16' 30" W ~ 49.95'



BENTON COUNTY CORNER RESTORATION FORM 145600440 4104

TOWNSHIP 14 SOUTH, RANGE 5 WEST, WILLAMETTE MERIDIAN; SECTION 13 CORNER W 1/4
 DONATION LAND CLAIM _____ CORNER _____
 DATE 8/03/92 CORNER RESTORATION FIELD BOOK NUMBER 13 PAGE(S) 9
 _____ CONDITION REPORT ONLY; _____ REFERENCED OUT; XX RENEWED; _____ SURVEYED IN

LOCATION AND COMMENTS:

THE CORNER IS LOCATED IN A CULTIVATED FIELD, 950 FEET SOUTHERLY FROM AN EAST-WEST FIELD BREAK WITH AN UNDERGROUND IRRIGATION MAINLINE AND 480 VOLT POWER PEDESTALS.

PREVIOUS RENEWALS/SURVEYS, ETC:

- [01] ORIGINAL GLO SURVEY BY KIMBALL WEBSTER DATED MAY 5, 1853.
- [02] COUNTY SURVEY NO. 251 BY J.A. GANONG DATED NOVEMBER 21, 1911.
- [03] COUNTY SURVEY NO. 953 BY WALTER W. LARSEN DATED JUNE 28, 1925.
- [04] OLD CORNER RESTORATION BOOK NO. 1 PAGE 177 BY WALTER W. LARSEN DATED JUNE OF 1925.
- [05] CORNER RESTORATION NO. 2229 BY W.C. GALLOWAY (NO DATE GIVEN).
- [06] COUNTY SURVEY NO. 1789 BY CURTIS C. HANSON DATED JULY 9, 1946.
- [07] OLD CORNER RESTORATION BOOK NO. 1 PAGE 177 BY BENTON COUNTY SURVEYOR'S OFFICE (NO DATE GIVEN).
- [08] CORNER RESTORATION NO. 2229 BY BENTON COUNTY SURVEYOR'S OFFICE (NO DATE GIVEN).
- [09] MAP NO. 14-5-00010 BY BENTON COUNTY SURVEYOR'S OFFICE (NO DATE GIVEN).
- [10] COUNTY SURVEY NO. 3293 BY CURTIS C. HANSON DATED SEPTEMBER 23, 1959.
- [11] COUNTY SURVEY NO. 3308 BY CURTIS C. HANSON DATED NOVEMBER 3, 1959.

MONUMENTS AND ACCESSORIES FOUND (CONDITION AND SOURCE):

- FOUND: 3/4" IRON ROD, 19" BELOW GROUND SURFACE FOR THE CORNER (3/4" ROD AS PER [6]).
- FOUND: A PARTLY BROKEN ASSEMBLY OF GEARS AND PLATES 8" IN DIAMETER X 5" HIGH SET DIRECTLY OVER THE RECOVERED 3/4" ROD, 17" BELOW GROUND SURFACE (MODEL T TRANSMISSION OVER 3/4" ROD, 12" BELOW GROUND SURFACE AS PER [7]).
- FOUND: 3 1/4" BENTON COUNTY BRASS CAP AT THE SOUTHEAST CORNER OF SECTION 11 AS PER CORNER RESTORATION NO. 4068, BEARS N 1° 39' 30" E 2670.09 FEET (N 0° 03' W 2669.30 FEET AS PER [9]).

NO OTHER RECORD BEARING OBJECTS WERE RECOVERED.

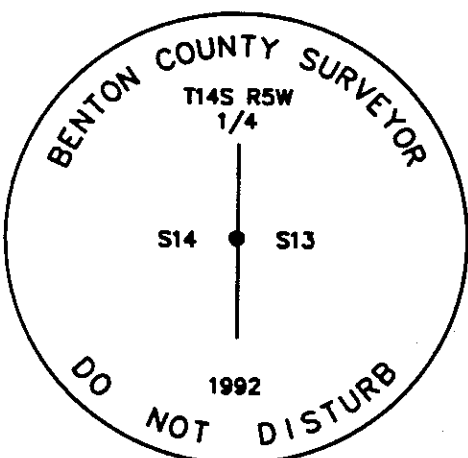
MONUMENT SET (PROCEDURES AND DESCRIPTION):

SET: 2" INSIDE DIAMETER X 36" LONG IRON PIPE WITH A 3 1/4" BENTON COUNTY BRASS CAP, STAMPED AS SHOWN, 18" BELOW GROUND SURFACE, AND CENTERED OVER THE RECOVERED 3/4" ROD. BURIED THE RECOVERED GEAR AND PLATE ASSEMBLY HORIZONTALLY ALONG THE NORTHERLY SIDE OF THE NEW MONUMENT.

NEW ACCESSORIES:

- SET: 5/8" X 30" REBAR WITH A YELLOW PLASTIC CAP, MARKED "BENTON COUNTY SURVEYOR", 19" BELOW GROUND SURFACE, BEARS N 0° 30' W 31.00 FEET.
- SET: 5/8" X 30" REBAR WITH A YELLOW PLASTIC CAP, MARKED "BENTON COUNTY SURVEYOR", 20" BELOW GROUND SURFACE, BEARS S 89° 35' E 45.49 FEET.
- SET: 5/8" X 30" REBAR WITH A YELLOW PLASTIC CAP, MARKED "BENTON COUNTY SURVEYOR", 18" BELOW GROUND SURFACE, BEARS S 1° 27' W 40.36 FEET.
- SET: 5/8" X 30" REBAR WITH A YELLOW PLASTIC CAP, MARKED "BENTON COUNTY SURVEYOR", 18" BELOW GROUND SURFACE, BEARS N 89° 16' 30" W 49.95 FEET.
- SET: A LOCATION TAG ON AN OAK 32" IN DIAMETER, BEARS N 85° W 1119 FEET.

MONUMENT DETAIL



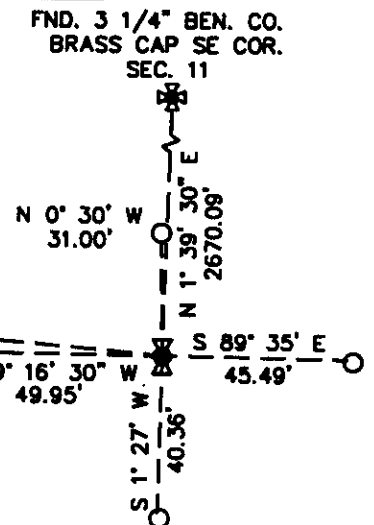
3 1/4" BRASS CAP



32" OAK

NOT TO SCALE

SKETCH



O = SET 5/8" REBAR WITH CAP (TYP).

NOTES:

B.C.B.W. IS A BRASS WASHER STAMPED "BENTON COUNTY SURVEYOR". COMPASS DECLINATION IS 20° EAST. ALL MEASURED DISTANCES AND COMPASS BEARINGS ARE TO THE CENTER OF THE OBJECT, UNLESS OTHERWISE NOTED. THIS RESTORATION WAS PERFORMED AT THE DIRECTION AND APPROVAL OF THE BENTON COUNTY SURVEYOR. *JB*

FIRM/AGENCY: BENTON COUNTY SURVEYOR
ADDRESS: 360 S.W. AVERY AVE. CORVALLIS OR 97333; PH. 757-6821
SURVEY CREW: CURTIS J. LIESENFELT/MARK E. ANDERSON

REGISTERED
 PROFESSIONAL
 LAND SURVEYOR

Curtis J. Liesenfelt

OREGON
 JULY 17, 1986
 CURTIS J. LIESENFELT
 2213