

CORNER FILE TRACKING

H:\Survey\Corners\Misc\Filetrac.doc

11/23/98

CORNER NUMBER
145841040

STEP	HISTORY()	RESTORATION()
Form Prepared, DB	9/1/05	9/8/05
Field Inspection, DB	9/1/05	9/1/05
Form Checked, DB	9/15/05	9/15/05
Form Edited, DB	9/15/05	9/15/05
Form Signed, DB	10/4/05	10/4/05
Counter Index	9/8/05	9/8/05
GIS Index	9/9/05	9/9/05
Authorize Payment, DB	—	—
Archive Digital Files	10/4/05	10/4/05
Collect Documents		
Scanned	10/11/05	10/11/05
Copy For Filming		
Filed, DB		
Finish index (count unit)	9/1/05	9/1/05
Filmed (Archived), DB		

(DB) = Entry needed in database (Access).

COMMENTS:

DATE 09/01/2005TOWNSHIP 14 SOUTH, RANGE 5 WEST, WILLAMETTE MERIDIAN; SECTION 09 CORNER NONE
DONATION LAND CLAIM DAVID BELCHER NO. 41 CORNER S. SE**COMMON CORNER(S):**

NONE

RECORDS (INFORMATION IN *BOLD ITALICS* IS COUNTY STAFFS' INTERPRETATION OF THE RECORD)

BASED ON EXTENSIVE RESEARCH AND RECOVERY OF EVIDENCE, THIS OFFICE HAS DETERMINED THAT MOST GENERAL LAND OFFICE SURVEYORS MEASURED TO THE FACE OF BEARING TREES.

- [01] GENERAL LAND OFFICE (GLO) NOTES OF THE DAVID BELCHER DLC NO. 41 BY DENNIS HATHORN, D.S., DATED DECEMBER 24, 1853. *SET POST FOR S.E. CORNER FROM WHICH A W. OAK 20" DIA. BEARS N12 1/4°W, 9.75 CHS (643.50 FEET); AN ASH 18" DIA. BEARS N46 3/4°W, 7.04 CHS (464.64 FEET).*
- [02] COUNTY SURVEY NO. 409 (OLD NO. 180) FIELD NOTES (FIELD BOOK NO. 15, PAGE 67) BY W. C. GALLOWAY, C.S., DATED NOVEMBER 10, 1913. *SET 1 1/4" PIPE. STUMP HOLE OF ASH; 20" DIA. OAK, N12°15'W, 9.75 CHS (643.50 FEET) STANDING; 10" DIA. DOUBLE THORN, S65°15'W, 0.768 CHS (50.69 FEET).*
- [03] BENTON COUNTY CORNER RESTORATION BOOK 1, PAGE 181 BY W. C. GALLOWAY, C.S., DATED NOVEMBER 10, 1913. *SET 1 1/4" PIPE FROM STUMP HOLE OF ASH AND ORIGINAL OAK, 20" IN DIAMETER, N12°15'W, 9.75 CHS (643.50 FEET) STANDING. MARKED DOUBLE THORN, 10" IN DIAMETER BEARS S65°15'W, 0.768 CHS (50.69 FEET).*
- [04] BENTON COUNTY CORNER RESTORATION NO. 2282. *TRANSCRIBED FROM RECORD NO. [03] AND MAY CONTAIN ERRORS AND/OR OMISSIONS.*
- [05] BENTON COUNTY MAP NO. 14-5-00008 BY W. C. GALLOWAY, C.S., DATED MAY 29, 1917. *1 1/4" PIPE. DOUBLE THORN 10" S65°15'W, 0.768 CHS (50.69 FEET); OAK 20" N12°15'W, 9.75 CHS (643.50 FEET) STANDING.*

NOTES:

THIS IS A MICROSOFT WORD 2000 DOCUMENT NAMED "45841040" CREATED FROM A BOILER PLATE DOCUMENT NAMED "HISTORY", WHICH HAS A STYLESHEET NAMED "CORNER" ATTACHED TO IT.

FIRM/AGENCY: BENTON COUNTY SURVEYOR'S OFFICE
ADDRESS: 360 S.W. AVERY AVE. CORVALLIS OR 97333; PH. 766-6821
RESEARCH BY: DAVID M. DEAN, P.L.S.
DATA ENTRY BY: SAME

BENTON COUNTY CORNER RESTORATION FORM, PAGE 1 OF 2, 145841040R2

SEE CORNER HISTORY FORM FOR RECORDS ETC.

CORNER RESTORATION FIELD BOOK NUMBER 23 PAGE(S) 56 DATE 09/01/2005
TOWNSHIP 14 SOUTH, RANGE 5 WEST, WILLAMETTE MERIDIAN; SECTION 09 CORNER NONE
DONATION LAND CLAIM DAVID BELCHER NO. 41 CORNER S.SE
CONDITION REPORT ____; REFERENCED OUT ____; RENEWED XX; SURVEYED IN ____

LOCATION AND COMMENTS:

CORNER IS LOCATED 2.8 FEET NORTH AND 6.6 FEET EAST OF FENCE CORNER WITH FENCES BEARING NORTH AND EAST, IN AN AREA OF HARDWOODS, BRUSH AND WETLANDS. TO REACH CORNER FROM THE JUNCTION OF HIGHWAY 99W AND DAWSON ROAD, TRAVEL WESTERLY ON DAWSON ROAD FOR 0.31 MILES TO 90° CURVE TO LEFT; THEN WALK NORTHERLY ALONG FENCE LINE FOR 1700 FEET; THEN WEST ALONG FENCE LINE FOR 1850 FEET TO CORNER. CORNER IS POOR FOR PREMARKING AND GPS CONTROL.

MONUMENTS AND ACCESSORIES FOUND (CONDITION AND SOURCE):

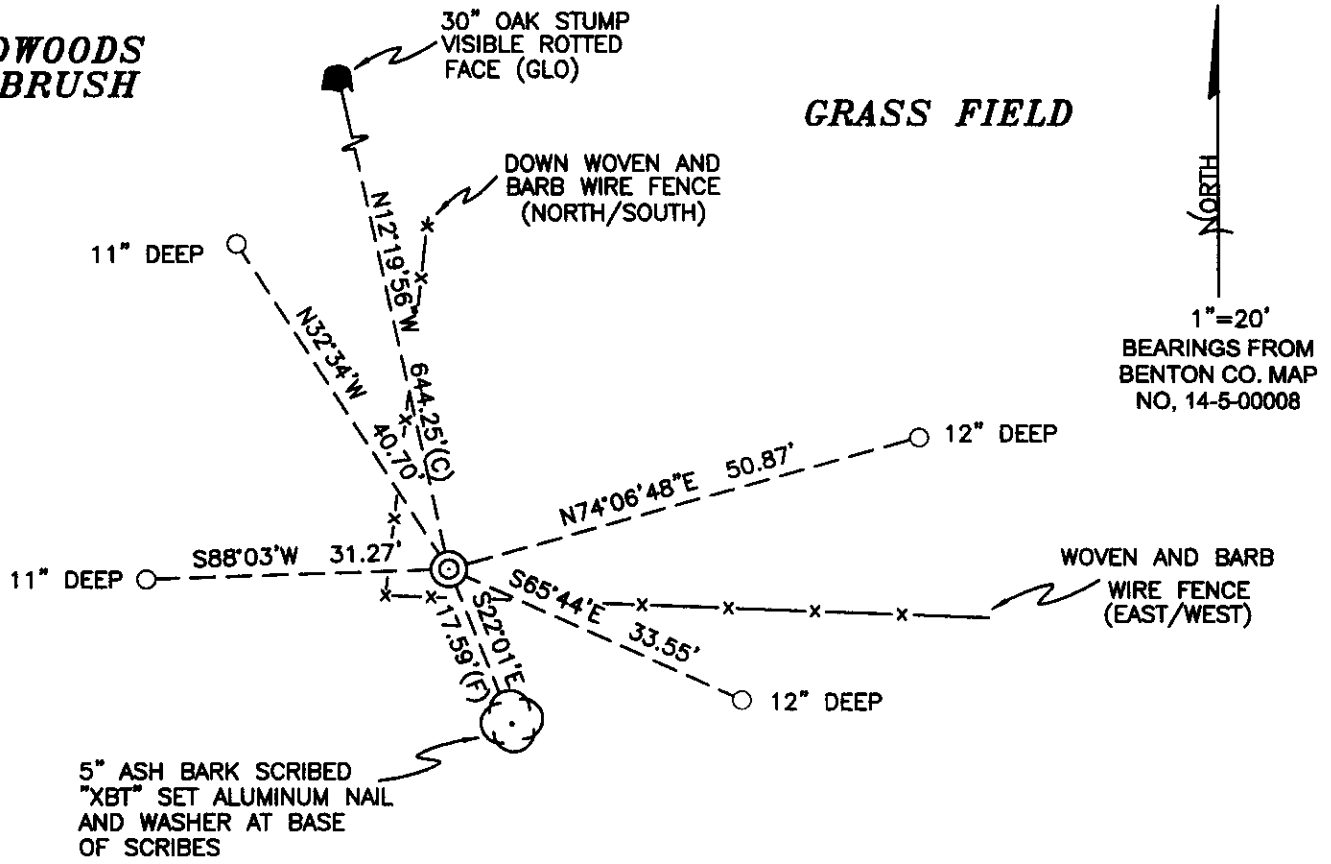
1. FOUND 1 1/4" X 24" IRON PIPE, 11" BELOW GROUND LEVEL WITH PINCHED TOP FOR CORNER POSITION.
(SET 1 1/4" PIPE FROM GLO ACCESSORIES PER RECORDS [02] AND [03]).
(1 1/4" PIPE PER RECORD [05]).
2. FOUND 30" W. OAK STUMP (SHELL) WITH LOWER ROTTED FACE, N12°20'W, 644.25 FEET TO CENTER.
(20" W. OAK BEARS N12 1/4°W, 643.50 FEET PER RECORD [01]).
(20" STANDING OAK BEARS N12°15'W, 643.50 FEET PER RECORDS [02], [03] AND [04]).

MONUMENT SET (PROCEDURES AND DESCRIPTION):

HELD THE 1 1/4" X 24" IRON PIPE FOR TRUE CORNER POSITION, AS SET PER RECORD [02] FROM GLO ACCESSORIES. REMOVED IRON PIPE AND SET 2" X 31 1/2" GALVANIZED IRON PIPE WITH A 3 1/4" BRASS DISK CONCRETED IN THE TOP, 2" BELOW GROUND LEVEL, MARKED AS SHOWN ON PAGE 2 OF 2. BURIED 1 1/4" IRON PIPE ON SOUTHERLY SIDE OF NEW MONUMENT IN HORIZONTAL POSITION AND 3" BELOW GROUND LEVEL. SET 6 FOOT ORANGE CARSONITE "SURVEY MARKER" POST 0.5 FEET NORTH OF NEW MONUMENT.

**HARDWOODS
AND BRUSH**

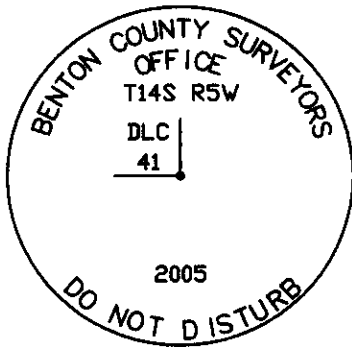
GRASS FIELD



1"=20'
BEARINGS FROM
BENTON CO. MAP
NO. 14-5-00008

HARDWOODS

MONUMENT DETAIL



3 1/4" BRASS DISK

LEGEND

- SET 5/8" X 30" REBAR WITH YELLOW PLASTIC CAP MKD "BENTON COUNTY SURVEYOR"
- (F) MEASUREMENT TO FACE
- (C) MEASUREMENT TO CENTER
- ⊙ GOVERNMENT MONUMENT SET AS SHOWN
- ⊙ BEARING TREE AS NOTED
- C.S.B.T. COUNTY SURVEYORS BEARING TREE
- GLO GENERAL LAND OFFICE
- ⊙ GLO BEARING TREE STUMP AS NOTED

NEW ACCESSORIES:

1. SET REBAR (SEE LEGEND) 12" BELOW GROUND LEVEL, N74°06'48"E, 50.87 FEET.
2. SET REBAR (SEE LEGEND) 12" BELOW GROUND LEVEL, S65°44'E, 33.55 FEET.
3. SET REBAR (SEE LEGEND) 11" BELOW GROUND LEVEL, S88°03'W, 31.27 FEET.
4. SET REBAR (SEE LEGEND) 11" BELOW GROUND LEVEL, N32°34'W, 40.70 FEET.
5. BARK SCRIBED 5" ASH, S22°01'E, 17.59 FEET TO FACE. SCRIBED "X BT".

NOTES:

COMPASS DECLINATION IS 20° EAST. ALL MEASURED DISTANCES AND BEARINGS ARE TO THE CENTER OF THE OBJECT, UNLESS OTHERWISE NOTED. ALL BEARING TREES ARE PAINTED AND HAVE A B.T. TAG ATTACHED, FACING THE CORNER UNLESS OTHERWISE NOTED. ALL NEW BEARING TREES HAVE A PLASTIC WASHER (STAMPED "BENTON COUNTY SURVEYOR CORNER RESTORATION") ATTACHED (BY ALUMINUM NAIL) TO THE FACE, BELOW THE "BT" FOR DISTANCE AND ANGLE MEASUREMENT UNLESS OTHERWISE NOTED. THE DRAWING IS FROM AUTOCAD RELEASE 2002.

THIS RESTORATION WAS PERFORMED AT THE DIRECTION AND APPROVAL OF THE BENTON COUNTY SURVEYOR, RW

FIRM/AGENCY: BENTON COUNTY SURVEYOR'S OFFICE
 ADDRESS: 360 S.W. AVERY AVE. CORVALLIS OR 97333; PH. 766-6821
 PRESENT: DAVID M. DEAN, P.L.S., BERNIE ALTENBACH AND BILL KELLEY, SURVEY TECH.
 EQUIPMENT: LEICA TCR 1105 WITH LDS ON BOARD

REGISTERED
PROFESSIONAL
LAND SURVEYOR

10/4/05 *David M. Dean*

OREGON
JULY 13, 1984
DAVID M. DEAN
2090

RENEWAL DATE: 12/31/05

145841040

S. SE D. BECKER DEC 41 TMS R SW

Fo. 1 1/4" 1.P. 1/2" DEEP W/ PINCHED TOP NORTH AND EAST OF N. NORTH/SOUTH FENCE OF AN EAST/WEST FENCE LINE SET BY W.C. GALLOWAY

GLO BT

30" DIA STUMP MOSTLY ROTTED / VISIBLE ROTTED

LOWER FALE, NW GLO BT

HELD 1/4" FIRE AS TRUE CORNER POSITION AND SET

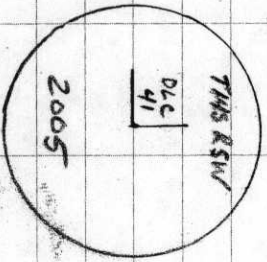
A 2" X 3 1/2" GIP W/ 3/4" B. CAP CONC. ON TOP

SET 2" BELOW GROUND LEVEL. BURIED 1 1/4"

PFE SOUTHERLY ON NEW MON. PLACED CEMENTS

CARBONITE POST D^E FT. NORTH. OF NEW MON.

3 1/4" B CAP MARKED AS SHOWN

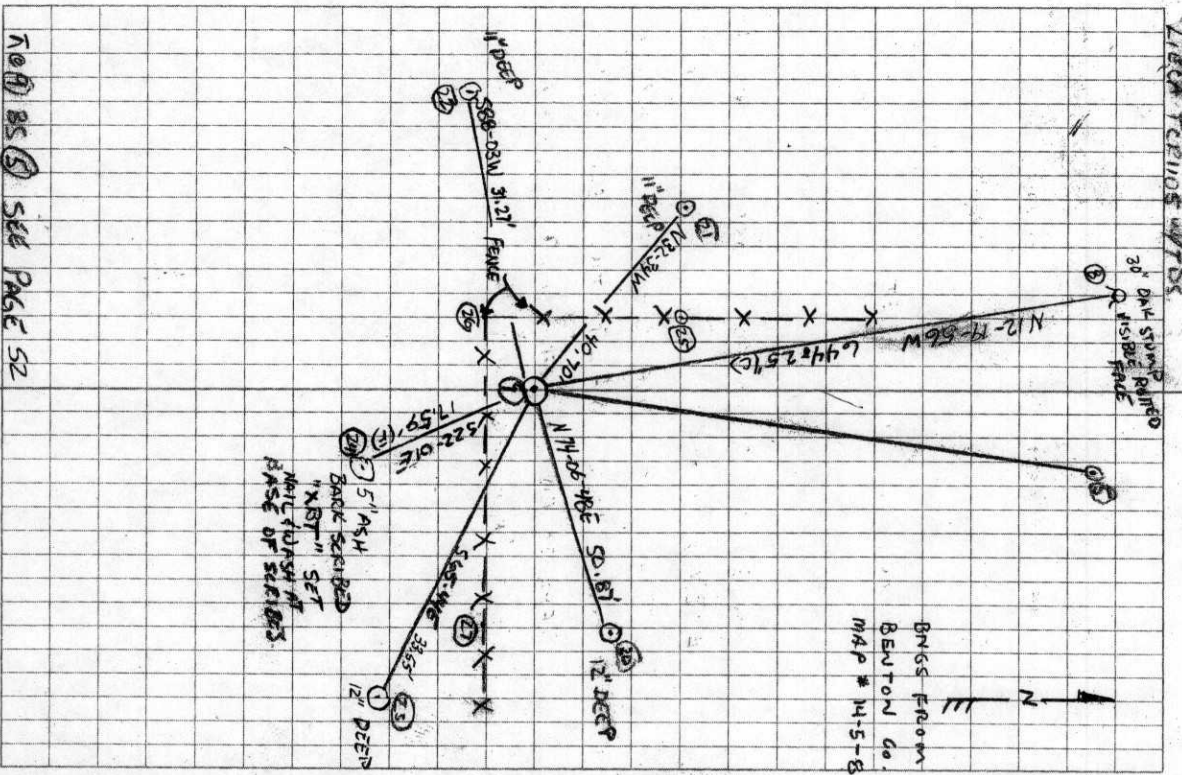


CLEAR BRIDGE W/ NEW

LIGN TRENDS W/ TDS

9-1-05 B. ALTEUSMAN B. KELLEY

23/5



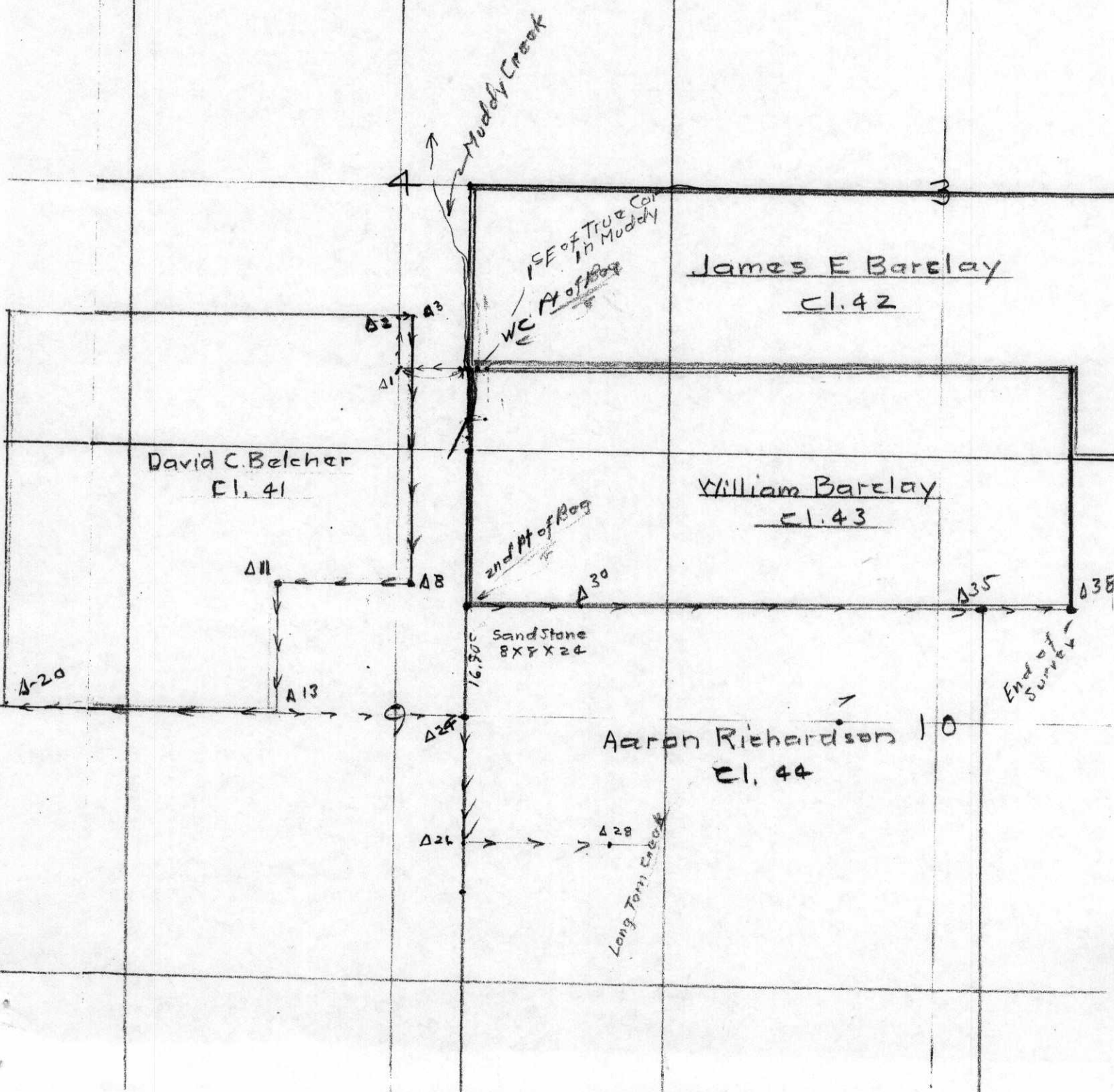
NO 85 SEE PAGE 52

409

(2)

Sketch Map of
C.S. 180
FB 15 Pg 66
Sec 4, 9, 10 T 14 S R 5 W
1" = 200'

Nov. 10th 1873



66 #409 FIB 15, PG 66-67

Survey #180 For Tomes Terror

Begin at W.C. 100° E of T.L. E. NW Cor

of W.M. Barclay 61.43 to 14-5

Reest. Set 1 1/2" pipe state found

Oct 24" S. 67° W. 2 1/2" std.

" 12" S. 150° E. 2.04' "

Set a 1 1/2" pipe .758 W. of cor.

S. 89° 45' W.

9295 from cor. in roadway

2 N-0° 05' W.

S. 89° 45' E

N.E. of Pond Beckers C. 41

ST. 1419 S.

Reest. Set 1 1/2" galv. pipe orig. cor.

Oct 10' S. 93° W. 2.59' SA

Oct 5" N. 19' W. 1.23 "

S. 36° W.

correction E. 26'

5

6

7

8

S.E. Reest.

striking W. of cor

set 1 1/2" pipe 10" under surface orig. cor. S.

Oct 20" N 70° 45' W 5.49 std.

" 12" N 37° 35' W 4.29 4 1/2 s.

Nov 10, 1913.

27

7228

7229

7230

7231

7232

7233

7234

7235

7236

7237

7238

7239

7240

7241

7242

7243

7058

7059

7060

7061

7062

7444

7445

7446

7447

7448

7449

7450

7228

7229

7230

7231

7232

7233

7234

7235

7236

7237

7238

7239

7240

7241

7242

7243

7244

7245

7228

7229

7230

7231

7232

7233

7234

7235

7236

7237

7238

7239

7240

7241

7242

7243

7244

7245

7228

7229

7230

7231

7232

7233

7234

7235

7236

7237

7238

7239

7240

7241

7242

7243

7244

7245

7228

7229

7230

7231

7232

7233

7234

7235

7236

7237

7238

7239

7240

7241

7242

7243

7244

7245

67	N. 89° 49' W. correction S. 41'	6.137	1021.00 16.90 53.3 6.22 5.11 13.72 6.22 7.0
9	Net in total	2.810	1894 1039 100195 = 7
10		7033	19720 1075 W. 0.526
	Re. Int. cor. of David C. Bolcher H Striking No. of cor.	6526	1986 1986
	Set 1 1/4 pipe	7.036	19040 17964
	Run 10" N. 88° E. 6.84 st	1.086	10760
	" 12" S. 53° 30' E. 5.75 "		34 3222 59772
12	S. 0° 10' W. correction N. 7'	10000	10915 3323999 19500 7990
13		13128	20100 23970 11300
X		- 1083	189 13741 1366 14021 5990
14	Striking E. of cor	0.15	2983 1407 2388
	Set 1 1/4 pipe stump hole 9' Ash		13721 1366 14021 5990
David Thorn 10" S. 65° 15' W.		.768' of S.	29.220 22.10 14
Run 20" N. 12° 15' W.		7.75' st	10000 CORRECTION N. 0.027 = 8
Run N. 89° 50' W. correction S. 9'			5922 278000 119544 284560 23088 464720
15		7986	39772 20000 226 60000 39772
16		5710	59772
17		8599	59772
	offset N. 12°	41706	59772
Re. 20 Set 20' st. cor		.206	59772
Set 1 1/4 pipe 15" N. 88° E. 105 No. of cor. 171		12.989	59772
Run 12" S. 39° 15' W. 992		1.030 2.24	59772

10000
CORRECTION N. 0.027 = 8
5922
278000
119544
284560
23088
464720

34
3222
59772

offset N. 12°

10000
CORRECTION N. 0.027 = 8
5922
278000
119544
284560
23088
464720

68

Back to A 13 No. 83

S. 89° 50' E
correction S. 47'

21	8.257
22	9.099
23	9.658
24	8.228
	7.082
	S. 386

Set 1/4" pipe
S. 0° 12' E.

16.90

25	2.5.908
26	7.500
27	13.695
28	8.305
29	5.75.047

to near
R. bent

Back to N. 89° 50' E
correction N. 13'

30	17.193
31	14.830
32	22.970
33	3.654
34	7.370
35	9.228
	-0.055
	282

Striking S. of cor.

14.570

21	8.257
22	9.099
23	9.658
24	8.228
	7.082
	S. 386

Richardson Okla.

Richardson

25	2.5.908
26	7.500
27	13.695
28	8.305
29	5.75.047

00570 = 13.

25	2.5.908
26	7.500
27	13.695
28	8.305
29	5.75.047

25	2.5.908
26	7.500
27	13.695
28	8.305
29	5.75.047

25	2.5.908
26	7.500
27	13.695
28	8.305
29	5.75.047

25	2.5.908
26	7.500
27	13.695
28	8.305
29	5.75.047

69

S. 89° 55' E
correction N. 13'

5105

00381 = 13

5922

139

2752

417

7062

1130

335

112

Rest. striking surf cor.
Set 3/4" pipe orig. cor.

Obs N. 40° E. 41 obs. sta

1 7" S 85° 40' E. 297 "

Pipe S. 57° 30' W. 20 "

From SW corner of 22 gravel pit

3670

N. 38° 02' E

5804

3231

Found 1/4" pipe, set 3/8" pipe - 358 at fence
Thence N. 89° 57' E

5105

5922

2752

7062

335

13.834

13.890

12105

9474

3231

5105

5922

2752

7062

335

13.834

13.890

C.S. 180
by W.C. Galloway C.S.
Nov. 10, 1913
Witnesses.
James M. Herron

Witness Corner 1 chain East of N.W. cor. of Wm. Barclay Cl. 14-5
Set 1 1/2" pipe stake found
Oak 24" in dia. bears S 67° W .76 chs. std.
" 12" " " " S 15° E 2.04 " "
Set 1 1/4" pipe .758 chs. West of Claim corner.

N.E. corner of David Belcher D.L.C. #41 T. 14 S. R 5 W
Set 1 1/4" galvanized iron pipe. Orig. cor.
Ash 10" in dia. bears S. 9 1/2° E. 2.59 chs. standing
Oak 5" " " " N 0° 19' W. 1.23 " "

Most East S.E. cor. of David Belcher Cl. 41 T 14-5
Set 1 1/4" pipe 10" under the surface. orig. cor.
Oak 20" in dia. bears N 70° 45' W. 5.49 chs. std.
Mkd. " 12" " " " N 34° 35' W. 4.294 "

Interior Cor. to David Belcher Cl. 41 T 14-5
Set 1 1/4" pipe
Ash 10" in dia. bears N 88° E 6.84 chs. std.
" 12" " " " S. 53 1/2° E 5.75 " "

SSE 47

S.E. or most S. S.E. cor. of David Belcher Cl. 41 T. 14-5
Set 1 1/4" pipe from stump hole of ash and
Mkd. Double Thorn 10" in diameter bears S. 65° 15' W. .768 chs.
Original Oak 20" " " " N. 12° 15' W. 9.75 " standing

S.W. corner of David Belcher D.L.C. 41 T 14-5
Set 1 1/4" shaft
Mkd. Thorn 6" in dia. bears N 88° 10' E .272 chs.
" Ash 12" " " " S 39° 15' W. .992 "

S.E. cor. of Wm Barclay D.L.C. T. 14-5
Set 3/4" pipe original corner
Oak 4" in dia. bears N. 4° E 41 chs. std.
Mkd. " 7" " " " S. 85° 40' E. 2.97 chs.
Pine " " " " S 57° 30' W 2.0 " "

Road Survey
W.C. Galloway C.S.
March 26, 1926
Witnesses
Carl Peterson and
Byron K. Taylor
Alsea Highway
Survey.
W.C. Galloway C.S.

Corner to Secs. 15, 16, 21 & 22 T. 13-7
1/4" pipe over
Set boulder in place of stone that was badly decayed and crumbled.
Fir 36" in dia. bears S. 18° E .94 chs. std.
" 14" " " " S 32 1/2° W 2.50 " " not checked
" 30" " " " N. 49° W. 2.33 " " "

1/4 Sec. Cor. bet secs. 31 & 32 T. 12 S. R 6 W.
Set a stone 16" x 18" x 24", high point for corner set from Fir 30" N 10° E 122.5 chs. std.
Fir 15" in dia. bears N 70° W. .174 chs.
" 4" " " " N 29 1/2° W. .663 " "
Witnesses Carl Peterson and C.R. Huffman March 10, 1926.

④ 2282

S. E. or most S S. E. corner of David Belcher Cl 41, Twp. 14 S., R. 5 W.

2282
November 10, 1913

Reestablishment by W. C. Galloway

Set $1\frac{1}{4}$ " pipe, from stump hole

Double Thorn 10" in diam bears S $65^{\circ}15'$ W
Original Oak 20" in diam bears N $12^{\circ}15'$ W
Witness James M. Herron

.768 chains
9.75 chains(standing)

SEC. 9