

## CORNER FILE TRACKING

H:\Survey\Corners\Misc\Filetrac.doc

11/23/98

<b>CORNER NUMBER</b>
<b>145847020</b>

STEP	HISTORY()	RESTORATION()
Form Prepared, DB	4/22/05	6/15/05
Field Inspection, DB	6/14/05	6/14/05
Form Checked, DB	7/1/05	7/1/05
Form Edited, DB	7/6/05	7/6/05
Form Signed, DB	7/6/05	7/6/05
Counter Index	6/16/05	6/16/05
GIS Index	6/16/05	6/16/05
Authorize Payment, DB	—	—
Archive Digital Files	7/7/05	7/7/05
Collect Documents	7/7/05	7/7/05
Scanned	7/8/05	7/8/05
Copy For Filming	7/7/05	7/7/05
Filed, DB		
Finish index (count unit)	6/14/05	6/14/05
Filmed (Archived), DB		

(DB) = Entry needed in database (Access).

### COMMENTS:

DATE 04/22/2005

TOWNSHIP 14 SOUTH, RANGE 5 WEST, WILLAMETTE MERIDIAN; SECTION 23 CORNER N/A  
 DONATION LAND CLAIM SAMUEL H. OLIVER NO. 47 CORNER S.E.

**COMMON CORNER(S):**

NONE

**RECORDS (INFORMATION IN *BOLD ITALICS* IS COUNTY STAFFS' INTERPRETATION OF THE RECORD)**

BASED ON EXTENSIVE RESEARCH AND RECOVERY OF EVIDENCE, THIS OFFICE HAS DETERMINED THAT MOST GENERAL LAND OFFICE SURVEYORS MEASURED TO THE FACE OF BEARING TREES.

- [01] GENERAL LAND OFFICE (GLO) NOTES BY DENNIS HATHORN D. S., DATED DECEMBER 17, 1853. *SET POST FOR S. E. CORNER FROM WHICH A W. OAK 20" DIA. BEARS N68 1/4°W, 571 LKS (376.86 FEET), A PINE 20" DIA. BEARS S63 1/2°E, 486 LKS (320.76 FEET), A PINE 24" DIA. BEARS N66 1/2°E, 530 LKS (349.80 FEET).*
- [02] COUNTY SURVEY NO. 569 (OLD NO. 254) FIELD NOTES (FIELD BOOK NO. 22 PG 9-13) BY W. C. GALLOWAY C. S., DATED OCTOBER 24, 1916. *S. E. CORNER OF S. H. OLIVER CLAIM 47, SET 1" X 1" I PIN AND 1 1/2" PIPE 30' NORTH, (GLO) PINE 20" DIA. S63°30'E, 4.94 CHS (326.04 FEET), OAK 20" N62°30'W, 5.71 CHS (376.86 FEET).*
- [03] BENTON COUNTY CORNER RESTORATION BOOK NO. 1 PG 115 BY W. C. GALLOWAY C. S., DATED OCTOBER 26, 1917. *S. E. CORNER OF S. H. OLIVER D.L.C. 47, SET A 1" X 1" I, ALSO A 1 1/2" PIPE 30' NORTH, A (GLO) PINE 20 DIA. BEARS S63°30'E, 4.94 CHS (326.04 FEET), OAK 20" DIA. BEARS N62°30'W, 5.71 CHS (376.86 FEET).*
- [04] BENTON COUNTY CORNER RESTORATION NO. 2302. *THIS IS TRANSCRIBED FROM RECORD NO. [03] AND MAY CONTAIN ERRORS AND/OR OMISSIONS.*
- [05] COUNTY MAP NO. 14-5-00017 BY W. C. GALLOWAY C. S., DATED OCTOBER 30, 1916. *1" X 1" I PIN, OAK 20" DIA. BEARS N62°30'W, 5.71 CHS (376.86 FEET).*
- [06] COUNTY SURVEY NO. 603 (OLD NO. 254) FIELD NOTES (FIELD BOOK NO. 23 PG 16-17) BY W. C. GALLOWAY C. S., DATED SEPTEMBER 13, 1917. *BEGINNING AT BOLT AT THE S. E. CORNER OF SAMUEL H. OLIVER CLAIM NO. 47 T 14-5.*
- [07] COUNTY SURVEY NO. 953 (OLD NO. 140) FIELD NOTES (FIELD BOOK NO. 35 PG 2-9) BY W. W. LARSEN D. C. S., DATED JUNE 8, 1925. *BACKSIGHT ON BOLT S. E. CORNER OF CLAIM 47.*
- [08] COUNTY MAP NO. 14-5-00011, BY BENTON COUNTY SURVEYORS OFFICE. *1" X 1" PIN FOR CORNER, (GLO) PINE 20" DIA. S63°30'E, 4.94 CHS (326.04 FEET), OAK 20" DIA. N62°30'W, 5.71 CHS (376.86 FEET).*
- [09] COUNTY MAP NO. 14-5-00016, BY BENTON COUNTY SURVEYORS OFFICE. *NOT TIED OR DESCRIBED.*
- [10] COUNTY SURVEY NO. 7566 BY CHARLES N. LEANORD, (THIS SURVEY WAS FOUND IN LINN COUNTY SURVEY RECORDS AND SUBMITTED FOR FILING BY B. OSBURN SHAW, (LINN COUNTY SURVEYOR) DATED SEPTEMBER 20, 1983). *STAKE 7.8 LKS (5.15 FEET) NORTH S. E. CORNER OF CLAIM NO. 47.*

**COMMENTS/LOCATION/ETC:****NOTES:**

THIS IS A MICROSOFT WORD 2000 DOCUMENT NAMED "458747030" CREATED FROM A BOILER PLATE DOCUMENT NAMED "HISTORY", WHICH HAS A STYLESHEET NAMED "CORNER" ATTACHED TO IT.

**FIRM/AGENCY:** BENTON COUNTY SURVEYOR'S OFFICE  
**ADDRESS:** 360 S.W. AVERY AVE. CORVALLIS OR 97333; PH. 766-6821  
**RESEARCH BY:** DAVID M. DEAN, P.L.S.  
**DATA ENTRY BY:** ADAM CASALEGNO, SURVEY TECH.

**BENTON COUNTY CORNER RESTORATION FORM, PAGE 1 OF 2, 145847020R2**

**SEE CORNER HISTORY FORM FOR RECORDS ETC.**

CORNER RESTORATION FIELD BOOK NUMBER 23 PAGE(S) 32 DATE 06/14/2005  
TOWNSHIP 11 SOUTH, RANGE 7 WEST, WILLAMETTE MERIDIAN; SECTION 23 CORNER N/A  
DONATION LAND CLAIM SAMUEL H. OLIVER NO. 47 CORNER S.E.  
CONDITION REPORT     ; REFERENCED OUT     ; RENEWED X; SURVEYED IN     

**LOCATION AND COMMENTS:**

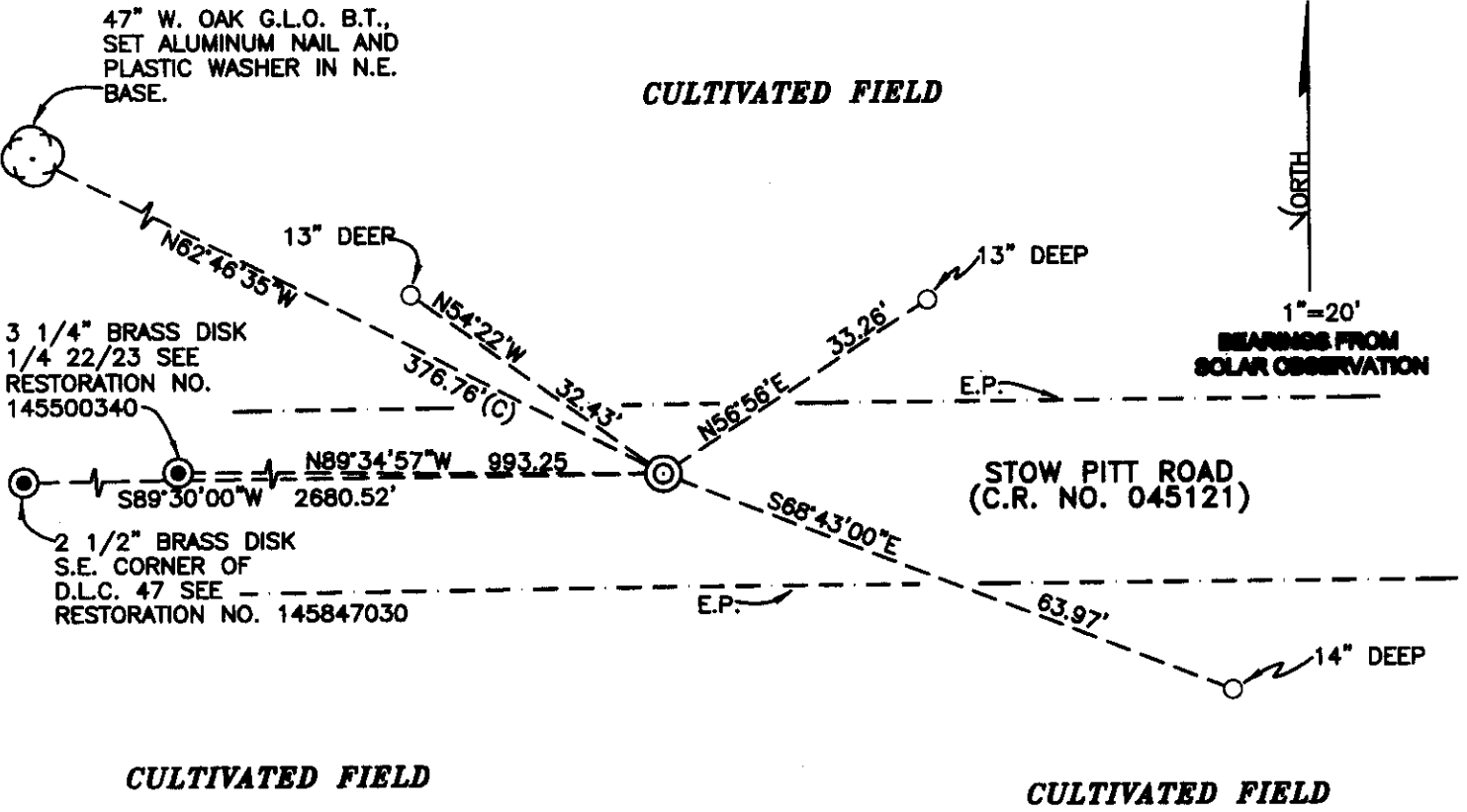
CORNER IS LOCATED 2.7 FEET NORTH OF CENTER LINE IN THE WEST BOUND LANE OF OLD RIVER ROAD. TO REACH CORNER FROM THE JUNCTION OF STOW PITT ROAD AND OLD RIVER ROAD, TRAVEL EASTERLY ON OLD RIVER ROAD FOR APPROXIMATELY 300 FEET TO CORNER IN MONUMENT BOX. CORNER IS GOOD FOR PREMARKING AND GPS CONTROL.

**MONUMENTS AND ACCESSORIES FOUND (CONDITION AND SOURCE):**

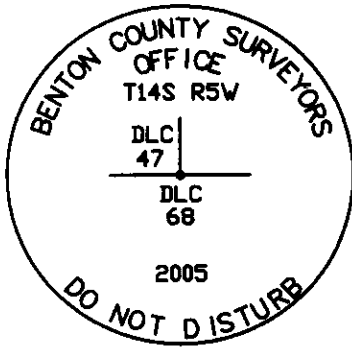
1. FOUND 1 1/2" SQUARE IRON BAR 20" BELOW GROUND LEVEL, PLUM AND FIRMLY SET FOR CORNER POSITION.  
(SET POST FOR S. E. CORNER PER RECORD [01]).  
(SET 1" X 1" I. PIN PER RECORDS [02]-[04]).  
(1" X 1" I. PIN PER RECORDS [05] AND [08]).
2. FOUND 47" DIA. W. OAK GLO BEARING TREE WITH HEALED FACE, N62°46'35"W, 376.76 FEET TO CENTER, SET ALUMINUM NAIL AND PLASTIC WASHER IN N.E. BASE FOR DISTANCE MEASUREMENT.  
(20" W. OAK BEARS N68°15'W, 376.86 FEET PER RECORD NO. [01]).  
(20" W. OAK BEARS N62°30'W, 376.86 FEET PER RECORDS [02]-[05] AND [08]).
3. FOUND 3 1/4" BRASS DISK AT 1/4 COMMON TO SECTIONS 22 AND 23 PER RESTORATION NO. 145500340, N89°34'57"W, 993.25 FEET.  
(3/4" GALVANIZED PIPE N89°17'W, 991.98 FEET [CALCULATED] PER RECORD NO. [05]).  
(3/4" PIPE N89°17'W, 991.98 FEET [CALCULATED] PER RECORD [08]).
4. FOUND 2 1/2" BRASS DISK S. E. CORNER OF D.L.C. 47, S89°30'00"W, 2680.52 FEET PER RESTORATION NO. 145847030.  
(1 1/4" PIPE S89°46'W, 2680.26 FEET PER RESTORATION NO. [08]).

**MONUMENT SET (PROCEDURES AND DESCRIPTION):**

HELD THE 1 1/2" IRON BAR FOR TRUE CORNER POSITION. SET A 2" X 31 1/2" GALVANIZED IRON PIPE OVER 1 1/2" SQUARE IRON BAR WITH A 3 1/4" BRASS DISK CONCRETED IN THE TOP 6" BELOW ROAD SURFACE, MARKED AS SHOWN ON PAGE 2 OF 2. PLACED A BOTTOM FLANGE MONUMENT BOX OVER NEW MONUMENT FLUSH WITH ROAD SURFACE.



**MONUMENT DETAIL**



**3 1/4" BRASS DISK**

**LEGEND**

- SET 5/8" X 30" REBAR WITH YELLOW PLASTIC CAP MKD "BENTON COUNTY SURVEYOR"
- (C) MEASUREMENT TO CENTER
- ⊙ GOVERNMENT MONUMENT SET AS SHOWN
- ⊙ GOVERNMENT MONUMENT FOUND AS SHOWN
- ⊙ BEARING TREE AS NOTED
- GLO GENERAL LAND OFFICE
- C.R. COUNTY ROAD
- E.P. EDGE OF PAVEMENT

**NEW ACCESSORIES:**

1. SET REBAR (SEE LEGEND) 13" BELOW GROUND LEVEL N54°22'W, 32.43 FEET.
2. SET REBAR (SEE LEGEND) 13" BELOW GROUND LEVEL N56°56'E, 33.26 FEET.
3. SET REBAR (SEE LEGEND) 14" BELOW GROUND LEVEL S66°43'E, 63.97 FEET.

**NOTES:**

COMPASS DECLINATION IS 20° EAST. ALL MEASURED DISTANCES AND BEARINGS ARE TO THE CENTER OF THE OBJECT, UNLESS OTHERWISE NOTED. ALL BEARING TREES ARE PAINTED AND HAVE A B.T. TAG ATTACHED, FACING THE CORNER UNLESS OTHERWISE NOTED. ALL NEW BEARING TREES HAVE A PLASTIC WASHER (STAMPED "BENTON COUNTY SURVEYOR CORNER RESTORATION") ATTACHED (BY ALUMINUM NAIL) TO THE FACE, BELOW THE "BT" FOR DISTANCE AND ANGLE MEASUREMENT UNLESS OTHERWISE NOTED. THE DRAWING IS FROM AUTOCAD RELEASE 2002.

THIS RESTORATION WAS PERFORMED AT THE DIRECTION AND APPROVAL OF THE BENTON COUNTY SURVEYOR, *rw*

REGISTERED  
PROFESSIONAL  
LAND SURVEYOR

7/6/05 *David M. Dean*

OREGON  
JULY 13, 1984  
DAVID M. DEAN  
2090

RENEWAL DATE: 12/31/05

**FIRM AGENCY:** BENTON COUNTY SURVEYOR'S OFFICE  
**ADDRESS:** 360 S.W. AVERY AVE. CORVALLIS OR 97333; PH. 766-6821  
**PRESENT:** DAVID M. DEAN, P.L.S., BERNIE ALTENBACH AND ADAM CASALEGNO, SURVEY TECHNICIANS  
**EQUIPMENT:** LEICA TCR 1105 WITH TDS ON BOARD

C.S. # 254 Corner to sections 13, 14, 23 + 24 T. 14 S. R. 5 W.

Set a guntbl. 22 gauge yew stake. East side.  
Maple 14" in dia. bears N. 39° E. .496 chs.  
Ash 12" " " " S. 10° W. .07 " std.  
Maple 16" " " " N 67° W .45 " "  
" 12" " " " N 2° 30' E. .534 " "

Witnesses Albert, Tom + Martin Goracke + J. L. Prohaska Oct. 25, 1916.

W.C. corner on s. bank of Old Will. River 21.455 chs. N. of 1/4 cor. bet. 23 + 24 T. 14 - 5.

Set 1" I. pin 40" long  
Ash 9" in dia. bears N. 51° 45' E. .229 chs.  
Pine 20" " " " S. 67° E. .20 " stump std.  
" 24" " " " N 60° W. .15 " "

Witnesses as above Oct. 24, 1916.

1/4 sec. cor. between secs. 23 + 24 T 14 S R 5 W.

Set 1 1/4" pipe at proportionat distance on sec. line.  
Fir 34" in dia. bears S. 7° E. 1.278 chs.  
" 26" " " " N 89° 10' W. 1.823 "  
Witnesses as above Oct. 26, 1916.

Corner to secs. 23, 24, 25 + 26 T. 14 S. R 5 W.

Set 1 1/4" x 24" I rod. Run lines both ways to 1/4 cor. with assistance of Chas. Leonard.  
Balm 28" in dia. bears N. 36° 30' E. 600 chs.  
" 24" " " " S. 72° 30' E. 520 "  
" 30" " " " N 57° W. 860 " Irons set for W.C. cor.

Witnesses A. + <sup>Tom</sup> Martin Goracke, Chas. Leonard et al. Oct. 27, 1916.

1/4 sec. cor. between secs. 25 + 26 T. 14 S. R 5 W.

Set a branding iron H, 20" long ash stump std.  
Ash 14" in dia. bears N. 82° 30' E. .646 chs.  
Balm 13" " " " S. 17° E. .31 " std.

Witnesses A, Martin + Tom Goracke, J. L. Prohaska et al Oct. 25, 1916.

S.E. cor. of S.H. Oliver D.L.C. # 47 T. 14 S R 5 W.

Set a 1" x 1" I also 1 1/2" pipe 30' north.  
Pine 20" in dia. bears S. 63° 30' E. 4.94 chs. std.  
Oak 20" " " " N. 62° 30' W 5.71 " "  
Witnesses A. + Tom Goracke, J. E. Prohaska et al. Oct. 26, 1917.

1/4 sec. cor. between secs. 22 + 23 T. 14 S. R 5 W.

Set 1 1/4" galv pipe 20" long. Pipegone, Set 1/4" Pipe 30" long  
Fir 15" in dia. bears N 58 1/2° E. .33 chs. std.  
" 50" " " " N. 18° E. 1.170 " Bee's nest in face of oak

Witnesses same as last corner. Oct. 26, 1916.

S. E. corner of S. H. Oliver DLC 47, Twp. 14 S., R. 5 W.

2302

Reestablishment by W. C. Galloway

October 26, 1917

Set a 1" x 1" I pipe, also 1 $\frac{1}{2}$ " pipe 30' north.

Pine 20" in diam bears S 63° 30' E

Oak 20" in diam bears N 62° 30' W

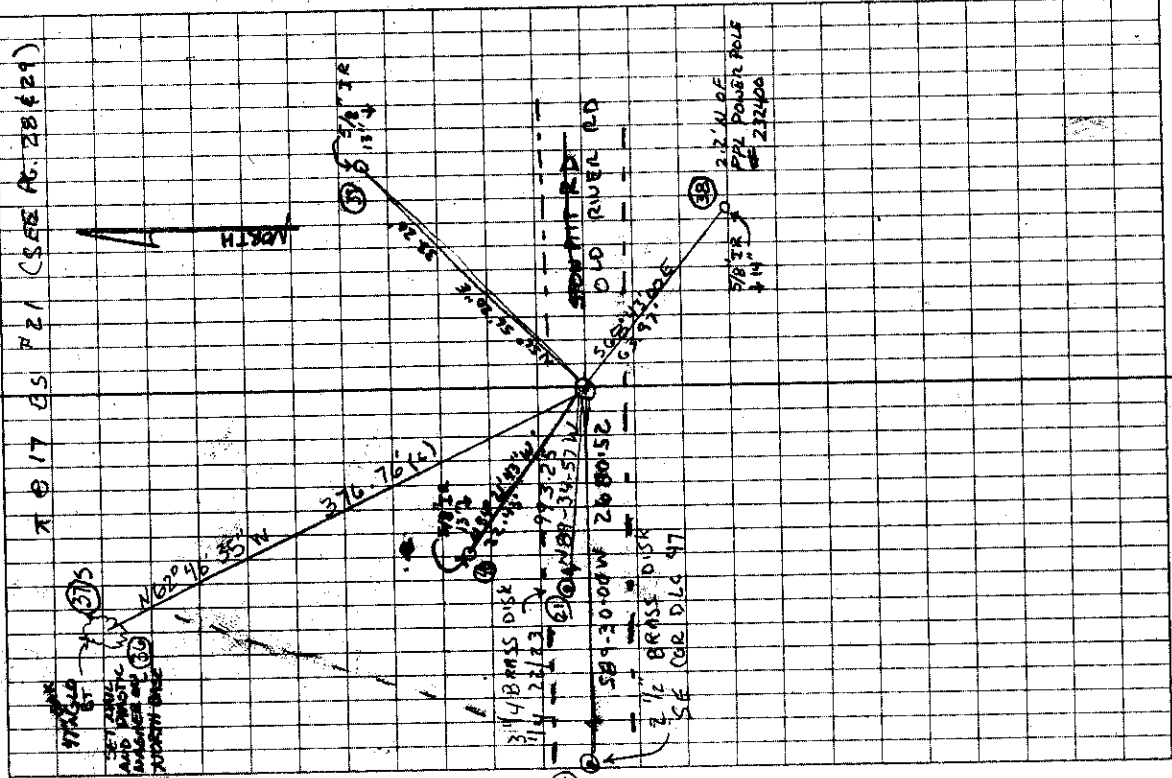
4.94 chains(standing)

5.71 chains(standing)

Witnesses A. and Tom Goracke, J. E. Prohaska, et. al.

6/13/05 2362  
 D. DEAN  
 A. CASALEGNO  
 B. AUTENBACH

CLOV, LT RAIN  
 60°F 29.7" Hg  
 LEICA TRIMBLE/TDS



145847020

REMONUMENTING SE COR SAMUEL OLIVER

DLC 47 T145 R5W

Fd 1 1/2" SQ IRON BAR 20' BELOW ROAD

SURFACE (STOW PIT ROAD) PLUM & FERRY

SET, FD NE COR RT. - NOW AN

W. OAK W

NEW IRON BAR FOR COR. POSITION, SET

2" x 3 1/2" GALVANIZED IRON PIPE OVER

IRON BAR W/ 3 1/4" BRASS DISK CONC

IN TOP 6" BELOW ROAD SURFACE MKD AS

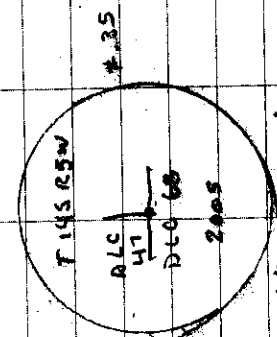
SHOWN SET BOTTOM FLANGED STEEL

MONUMENT BOT OVER NEW MONUMENT

AND FLUSH WITH ROAD SURFACE.

CORNER IS LOCATED 2-7' NORTH OF CENTER LINE

IN STW PIT RD



3 1/4" BRASS DISK  
 IN MON. BOX