

CORNER FILE TRACKING

H:\Survey\Corners\Misc\Filetrac.doc

11/23/98

CORNER NUMBER

145852010

STEP	HISTORY()	RESTORATION()
Form Prepared, DB	8/30/05	9/12/05
Field Inspection, DB	9/6/05	9/6/05
Form Checked, DB	9/15/05	9/15/05
Form Edited, DB	9/16/05	9/16/05
Form Signed, DB	10/4/05	10/4/05
Counter Index	9/6/05	9/6/05
GIS Index	9/12/05	9/12/05
Authorize Payment, DB	—	—
Archive Digital Files	10/4/05	10/4/05
Collect Documents		
Scanned	10/12/05	10/12/05
Copy For Filming		
Filed, DB		
Finish index (count unit)	9/6/05	9/6/05
Filmed (Archived), DB		

(DB) = Entry needed in database (Access).

COMMENTS:

DATE 08/30/2005

TOWNSHIP 14 SOUTH, RANGE 05 WEST, WILLAMETTE MERIDIAN; SECTION 08 CORNER N/A
DONATION LAND CLAIM HENRY NOBLE NO. 52 CORNER NORTHEAST

COMMON CORNER(S):

NONE

RECORDS (INFORMATION IN *BOLD ITALICS* IS COUNTY STAFFS' INTERPRETATION OF THE RECORD)

BASED ON EXTENSIVE RESEARCH AND RECOVERY OF EVIDENCE, THIS OFFICE HAS DETERMINED THAT MOST GENERAL LAND OFFICE SURVEYORS MEASURED TO THE FACE OF BEARING TREES.

- [01] GENERAL LAND OFFICE (GLO) NOTES BY DENNIS HATHORN, D.S., DATED DECEMBER 22, 1853. *SET POST, DEPOSITED CHARRED STAKE AND DUG TRENCH.*
- [02] OLD COUNTY ROAD NO. 311 FIELD NOTES (FIELD BOOK 14, PAGE 71) BY W. C. GALLOWAY, C.S., DATED MAY 23, 1913. *TIED BUT NOT DESCRIBED.*
- [03] CORNER RESTORATION BOOK NO. 1, PAGE 69 BY W. C. GALLOWAY, C.S., DATED MAY 30, 1913. *SET 1 1/4" PIPE WITH STONE BY THE PIPE. S.E. CORNER OF DONATION LAND CLAIM NO. 40, BEARS S89°44'W, 5.347 CHAINS (352.902 FT.).*
- [04] CORNER RESTORATION NO. 2322. *TRANSCRIBED FROM RECORD [02] AND MAY CONTAIN ERRORS AND/OR OMISSIONS.*
- [05] OLD, COUNTY ROAD NO. 332 1/2 FIELD NOTES (FIELD BOOK NO. 16, PAGE 17) BY W. C. GALLOWAY, C.S., DATED FEBRUARY 17, 1914. *TIED BUT NOT DESCRIBED.*
- [06] OLD COUNTY ROAD NO. 332 1/2 MAP BY W. C. GALLOWAY, C.S., FILED MARCH 30, 1914. *1 1/4" PIPE.*
- [07] BENTON COUNTY MAP NO. 14-5-00007 BY W. C. GALLOWAY, C.S., DATED AUGUST 10, 1918. *1 1/4" PIPE.*
- [08] OLD COUNTY ROAD NO. 418 BY W. C. GALLOWAY, C.S., LOCATED IN COUNTY ROAD BOOK NO. 2, PAGE 482, DATED APRIL 1920. *1 1/4" PIPE.*

COMMENTS/LOCATION/ETC:

UNABLE TO LOCATE ANY FIELD NOTES FOR GALLOWAY'S SETTING OF THIS CORNER.

NOTES:

THIS IS A MICROSOFT WORD 2000 DOCUMENT NAMED "45852010" CREATED FROM A BOILER PLATE DOCUMENT NAMED "HISTORY", WHICH HAS A STYLESHEET NAMED "CORNER" ATTACHED TO IT.

FIRM/AGENCY: BENTON COUNTY SURVEYOR'S OFFICE
ADDRESS: 360 S.W. AVERY AVE. CORVALLIS OR 97333; PH. 766-6821
RESEARCH BY: BERNARD S. ALTENBACH, SURVEY TECH.

DATA ENTRY BY: SAME

BENTON COUNTY CORNER RESTORATION FORM, PAGE 1 OF 2, 145852010R2
SEE CORNER HISTORY FORM FOR RECORDS ETC.

CORNER RESTORATION FIELD BOOK NUMBER 23 PAGE(S) 57 DATE 09/06/2005
TOWNSHIP 14 SOUTH, RANGE 5 WEST, WILLAMETTE MERIDIAN; SECTION 08 CORNER NONE
DONATION LAND CLAIM HENERY NOBLE NO. 52 CORNER NORTHEAST
CONDITION REPORT ____; REFERENCED OUT ____; RENEWED XX; SURVEYED IN ____

LOCATION AND COMMENTS:

CORNER IS LOCATED IN A FLAT LOWLAND AREA OF ASH AND BRUSH. TO REACH CORNER FROM THE JUNCTION OF HIGHWAY 99W AND DAWSON ROAD, TRAVEL WESTERLY ON DAWSON ROAD FOR 1.25 MILES AND PARK JUST WEST OF NORTHERLY GARD RAIL; THEN WALK NORTHERLY FOR APPROXIMATELY 150 FEET TO CORNER. CORNER IS POOR FOR PREMARKING AND GPS CONTROL.

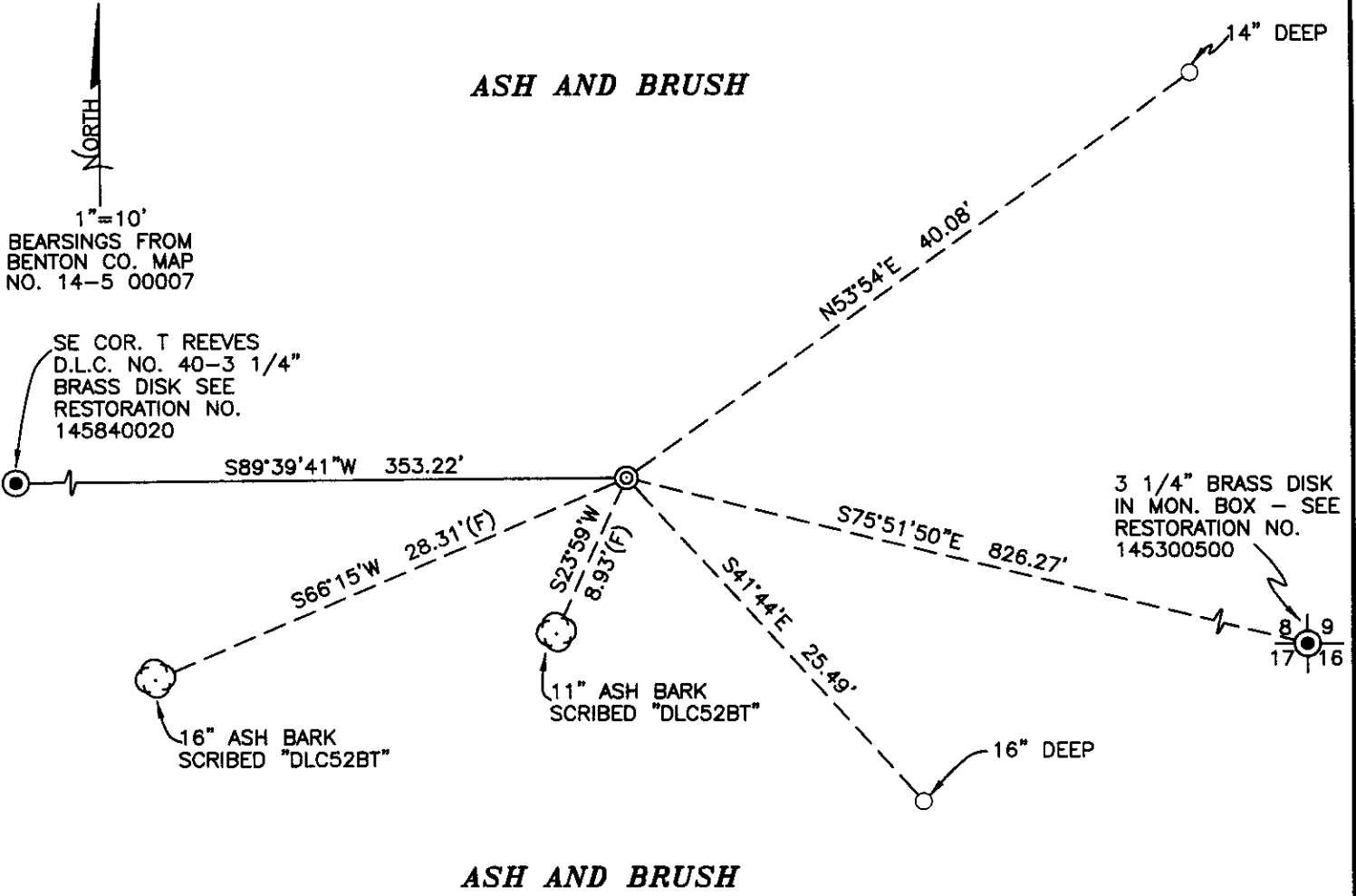
MONUMENTS AND ACCESSORIES FOUND (CONDITION AND SOURCE):

1. FOUND 1 1/4" X 30" IRON PIPE, 1" ABOVE GROUND LEVEL FOR CORNER POSITION.
(SET POST, DEPOSITED CHARRED STAND AND DUG TRENCH PER RECORD [01]).
(SET 1 1/4" PIPE WITH STONE BY PIPE PER RECORD [03]).
(1 1/4" PIPE PER RECORDS [06] – [08]).
2. FOUND 18" X 10" X 10" STONE, WEST 0.6 FEET AND 3" BELOW GROUND LEVEL, NO MARKS.
(SET 1 1/4" PIPE WITH STONE BY PIPE PER RECORD [03]).
3. FOUND SE CORNER OF THE THOMAS REEVES D.L.C. NO. 40, S89°39'41"W, 353.22 FEET. A 3 1/4" BRASS DISK ON 2" GALVANIZED IRON PIPE, SEE RESTORATION NO. 145840020.
(S89°45'W, 351.12 FEET PER RECORD [01]).
(1 1/4" PIPE S89°46'W, 354.16 FEET PER RECORD [06]).
(1 1/4" PIPE S89°41'W, 354.16 FEET PER RECORD [07]).
4. FOUND SECTION CORNER COMMON TO SECTIONS 8, 9, 16, AND 17, S75°51'50"E, 826.27 FEET. A 3 1/4" BRASS DISK IN MONUMENT BOX, LOCATED IN WEST BOUND LANE OF DAWSON ROAD.
(GRANITE STONE, S75°51'37"E, 826.74 FEET [CALCULATED] PER RECORD [07]).

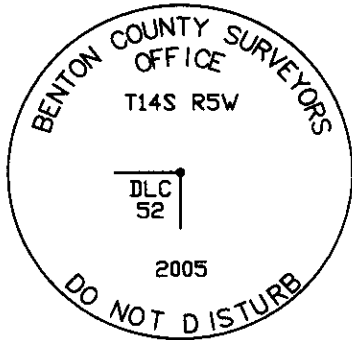
MONUMENT SET (PROCEDURES AND DESCRIPTION):

IT IS UNCLEAR WHAT, IF ANY ORIGINAL (GLO) CORNER EVIDENCE WAS RECOVERED IN RECORDS [02], [03] AND [05], OR WHAT EVIDENCE WAS USED TO DETERMINE THE POSITION OF THE MONUMENT SET PER RECORD [03]. ANALYZING RECORD [07] MAP, WOULD SUGGEST THE SUBJECT CORNER WAS PLACED BY BEARING/BEARING INTERSECTION, HOLDING THE NORTHWEST CORNER OF THE HENRY NOBLE D.L.C. NO. 52 AND THE SOUTHEAST CORNER OF THE THOMAS REEVES D.L.C. NO. 40, FOR THE EASTERLY BEARING DIRECTION AND A NORTH BEARING FROM THE SOUTHEAST CORNER OF THE SAID HENRY NOBLE CLAIM.

WE HAVE DETERMINED TO HOLD THE RECORD 1 1/4" IRON PIPE FOR THE TRUE CORNER POSITON, BASED ON THE PREPONDERANCE OF EVIDENCE AND 90+ YEARS OF ACCEPTANCE. REMOVED THE 1 1/4" X 30" IRON PIPE AND SET A 2" X 31 1/2" GALVANIZED IRON PIPE, WITH A 3 1/4" BRASS DISK CONCRETED IN THE TOP, 1" BELOW GROUND LEVEL AND MARKED AS SHOWN



MONUMENT DETAIL



LEGEND

- SET 5/8" X 30" REBAR WITH YELLOW PLASTIC CAP MKD "BENTON COUNTY SURVEYOR"
- (F) MEASUREMENT TO FACE
- (C) MEASUREMENT TO CENTER
- ⊙ GOVERNMENT MONUMENT SET AS SHOWN
- GOVERNMENT MONUMENT FOUND AS SHOWN
- ⊙ BEARING TREE AS NOTED
- GLO GENERAL LAND OFFICE

NEW ACCESSORIES:

1. SET REBAR (SEE LEGEND) 14" BELOW GROUND LEVEL, N53°54'E, 40.08 FEET.
2. SET REBAR (SEE LEGEND) 16" BELOW GROUND LEVEL, S41°44'E, 25.49 FEET.
3. MARKED 11" ASH, S23°59'W, 8.93 FEET TO FACE. BARK SCRIBED "DLC52BT".
4. MARKED 16" ASH, S66°15'W, 28.31 FEET TO FACE. BARK SCRIBED "DLC52BT".

NOTES:

COMPASS DECLINATION IS 20° EAST. ALL MEASURED DISTANCES AND BEARINGS ARE TO THE CENTER OF THE OBJECT, UNLESS OTHERWISE NOTED. ALL BEARING TREES ARE PAINTED AND HAVE A B.T. TAG ATTACHED, FACING THE CORNER UNLESS OTHERWISE NOTED. ALL NEW BEARING TREES HAVE A PLASTIC WASHER (STAMPED "BENTON COUNTY SURVEYOR CORNER RESTORATION") ATTACHED (BY ALUMINUM NAIL) TO THE FACE, BELOW THE "BT" FOR DISTANCE AND ANGLE MEASUREMENT UNLESS OTHERWISE NOTED. THE DRAWING IS FROM AUTOCAD RELEASE 2002.

THIS RESTORATION WAS PERFORMED AT THE DIRECTION AND APROVAL OF THE BENTON COUNTY SURVEYOR. DM

FIRM/AGENCY: BENTON COUNTY SURVEYOR'S OFFICE.
 ADDRESS: 360 S.W. AVERY AVE. CORVALLIS OR 97333; PH. 766-6821
 PRESENT: DAVID M. DEAN, P.L.S., BERNIE ALTENBACH AND BILL KELLEY, SURVEY TECHNICIANS.
 EQUIPMENT: LEICA TCR 1105 W/TDS ONBOARD.

REGISTERED
 PROFESSIONAL
 LAND SURVEYOR

10/4/05 *David M. Dean*

OREGON
 JULY 13, 1984
 DAVID M. DEAN
 2090

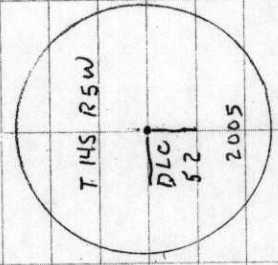
RENEWAL DATE: 12/31/05

145852010

REMONUMENTING NE HENRY NOBLE DLC # 52

T 14 S R5W

Fd 1 1/4" x 30" IRON PIPE 1" ABOVE GROUND
 LEVEL AS SET BY W.C. GALLOWAY, FOR COR.
 POSITION. NO PT'S PER GLO OR
 COUNTY SURVEYOR. Fd 18" x 10" STONE ON W
 SIDE I.P. # 3" - UNMARKED
 REMOVED 1 1/4" I.P. & SET 2" x 3 1/2" G.Z.P.
 w/ 3 1/4" BRASS DISK 1" + AND MKD
 AS SHOWN. BURIED 1 1/4" IRON PIPE
 ON SOUTH SIDE NEW MON. 6" + IN
 HORIZ. POSITION
 SET 6' ORANGE CARBONITE "SURVEY
 MARKER POST 0 E NORTH NEW MON
 REFERENCED AS SHOWN
 POOR FOR PREMARKING & GPS CONTROL



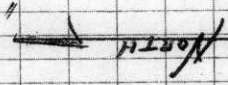
#22

3 1/4" BRASS DISK

CLEAR, WARM
 77° F (PM)
 30.0" HG
 LEICA TC1105/TDS

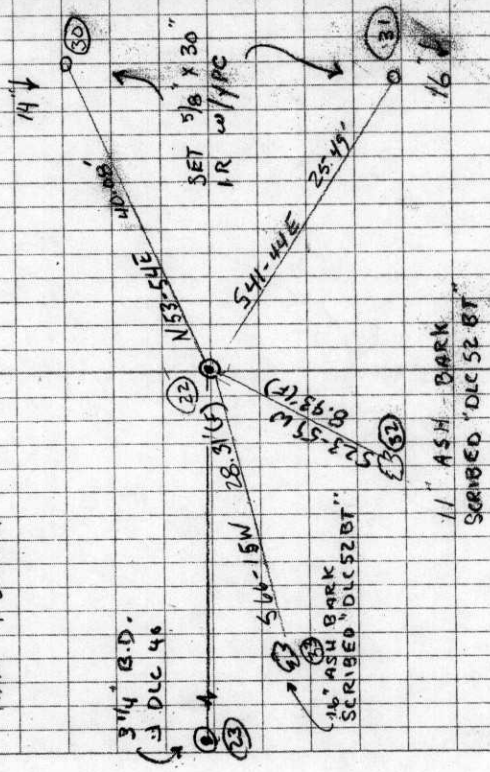
9/6/05 23/57
 D. DEAN
 B. ALTENBACH
 B. KELLEY

T @ COR (#22) BS # 20



ASH & BRUSH

FROM BEN CO.
 MAP 14-5-00007



ASH & BRUSH

C.S. 172

1/4 cor. on n. side of sec. 4. Tp 11-7
Set 1/2" pipe
Fir 36" in dia. bears n. 18° E. 115' std.
Burnt fir 48" " " S. 47° E. 155' "
Witnesses E. Perry + F.W. Bunn heard. 7/17/13

173

1/4 sec. cor. on S. side of sec 31. Tp ~~11~~^{13 changed Oct. 11} 7
Set 3/4" pipe 2. lig. or. fir etc. p.
Fir 9" in dia. bears n. 87° 45' E. 1.11'
Alder 10" " " n. 80° W. 2.18' std.
Witnesses R.C. Miller, J.W. Vinyard. 5/15/13

173

Top. cor. bet. Tps. 14-7 + 8 on 3rd std. parallel
Set stone
Maple in dia. bears S. 10° 37' E.
Witnesses R.C. Miller, J.W. Vinyard. 5/15/13

174

S.E. cor. of Henry Noble D. L. C. # 52 Tp 14-5.
Set 1/4" pipe + stone by st.
S.E. cor. of bears S. 89° 44' W. 5.347'
Witnesses Clyde + W.F. Starr. 7/30/13

174

n.w. cor. of Henry Noble D. L. C. # 52. Tp 14-5
Set stone 6x6x6"
Oak 20" in dia. bears S. 35° 50' E. 1.65' std.
" 12" " " S 52° W. 1.813'
Witnesses Clyde + W.F. Starr. 7/13

174

S.W. cor. of Henry Noble D. L. C. # 52 Tp. 14-5
Set 5/8" iron pin stump + stump hole. 1/2" x 30" Oak Pipe # 741
Oak 10" in dia. bears n 73° E. 15-40" ^{Oak - F. Kelley Oct. 2, 1913} 2x30" Oak Pipe E. 30-20"
24" " " n. 13° 35' W. 3.5-11'
Witnesses Clyde + W.F. Starr 7/13

174

S.E. cor. 1/4 sec D Reeves L. 11 C 40 Tp 14-5
Set 1/4" pipe 2. lig. or. ash stump S. 71° W. 10.89'
Ash 11" in dia. bears S. 72° 31' E. 1.86'
" 5" " " n. 8° 30' W. 2.25' std.
Witnesses W.F. Starr, C.W. Eldon. 5/23/13

174

N.E. cor. of John Loose D. L. C. # 52 Tp 14-5
Set 1/2" iron pin 2. lig. cor. with stump, check.
Oak 18" in dia. bears n. 7° 15' E. 4.49' std.
Yok oak 16" " " S. 41° E. 2.03'
Oak 15" " " S. 20° 30' W. 2.145'
Witnesses Clyde Starr + W.F. Starr. 2/27/13

(174) (4)

2322

N.E. Corner of Henry Noble DLC 52, Twp. 14-5

Reestablishment by W. C. Galloway

May 30, 1913

Set $1\frac{1}{4}$ " pipe and stone by it.

S. E. corner of - - - - - bears S 89° 44' W

5.347 chains

Witnesses Clyde and W. F. Starr