

CORNER FILE TRACKING

H:\Survey\Corners\Misc\Filetrac.doc

11/23/98

CORNER NUMBER
145853030

STEP	HISTORY()	RESTORATION()
Form Prepared, DB	12-10-98	8-10-99
Field Inspection, DB	—	—
Form Checked, DB	9-9-99	9-9-99
Form Edited, DB	9-20-99	9-20-99
Form Signed, DB	—	10-1-99
Authorize Payment, DB	—	—
Archive Digital Files	10-14-99	10-14-99
Collect Documents	10-12-99	10-12-99
Scanned		
Copy For Filming		
Filed, DB		
Finish index (count unit)		
Filmed (Archived), DB		

(DB) = Entry needed in database (Access).

COMMENTS:

Survey #174 cont L in East line 7.688 chs. N. of S.E. cor. of John L. Lane D.L.C. # 53 T. 14 S. R. 5 W.
 Set 1" rod
 Oak 30" in dia. bears N. 40 1/2° E. 106 chs.
 Witnesses G.R. Hall & F.P. Swinson Sept. 24, 1913.

174 S.E. cor. of John Lane D.L.C. # 53 T. 14 S. R. 5 W.
 Set 3/4 x 2" I bar. Nkt. stump std.
 Oak 16" in dia. bears S. 33° W. 869 chs.
 " 12" " " " N. 91° W. 36 " std.
 Witnesses G.R. Hall & F.P. Swinson Sept 24, 1913.

174 N.E. cor. Jesse Hawley D.L.C. # 51 T. 14 - 5.
 Orig. stone 16" x 16" x 20" ^{granite} Mark Trippe Oak 542° N. 515' D.W. 6-7-41
 Oak 30" in dia. bears N. 3° E. 3.08 chs. std. Dead in roadway
 " 11" " " " S. 71° 30' W. 530 "
 Witnesses G.R. Hall & F.P. Swinson Sept. 24, 1913.

174 N.W. cor. of Jesse Hawley D.L.C. # 51 T. 14 - 5
 Set a 5/8" rod oak stump S. 85.0° E. 2.40' C.S. 89 Mad streets
 Oak 12" in dia. bears N. 30° 30' E. 350 chs.
 " 18" " " " N. 80° E. 121 " std.
 " 6" " " " S 40° E. 265 "
 Witnesses G.R. Hall & F.P. Swinson. Sept. 25, 1913.

Survey #202 N.E. cor. of John C. Porter Cl. # 50 T. 13 S. R. 5 W.
 Orig. Stone found 6" under surface, wt 88.10 x 8 x 15, " by
 the North side of original stone from which
 a 20" oak anchor post in corner of wire fence was
 S. 79° E. 1202 chs. dist. Witness, H.L. Wagner. Jan 15-14

CL # 74 " #203 1/4 sec. cor. T. 36 & 1 T. 12 & 13 S. R. 5 W.
 Set ~~last~~ 3 bottles in ground 20" deep and one on top of
 tree and another on top of this, and take inside the walls
 from which Orig. Pin 6" (now 24") bears N. 53° W. 57 lks. dist
 Mark New. Pt. Pine 14" S. 70 1/2° E. 405 lks. dist.
 Witnesses, J.G. Smith, C.F. Hohm - J.H. Fisher. Jan 22, 1914

1/4 sec. cor. T. 13 S. R. 5 W.
 Set heart oak stake 4 1/4 x 30" from which
 Orig. B.T. Oak 10" (now 16") N. 12° W. 54 lks. dist
 Mark New. B.T. " 8" " S. 70 1/2° E. 045 " " Jan 26-1914
 Same witnesses as ^{last} above named

N.W. cor. Geo. Fogle Cl. # 46 - T. 13 S. R. 5 W.
 Set 2" Gas Pipe 8" below surface from which
 Orig. Pt. Pine 20" (now 26") bears N. 35 3/4° W. 156 chs. dist
 Mark now Tree " 10" " S. 74 1/2° E. 1403 " "
 Same witnesses as last above named. Jan 28-1914

CL # 74

Dec. 1911

S. E. corner of John Loose DLC 53, Twp. 14 S R 5 W

2325

Reestablishment by W. C. Galloway

September 24, 1913

Set 3/8" x 2" I bar. N. E. stump standing

Oak 16" in diam bears S 33° W

Oak 12" in diam bears N 51° W-

Witnesses G. R. Hall and F. P. Swinson

.869 chains

.36 chains (standing)

2772

DATE 12/10/1998TOWNSHIP 14 SOUTH, RANGE 5 WEST, WILLAMETTE MERIDIAN; SECTION 19 CORNER _____
DONATION LAND CLAIM JOHN LOOSE NO. 53 CORNER SE**COMMON CORNER(S):**

POINT ON WEST LINE JOSEPH KELSEY D.L.C. NO. 56

CORNER RECORDS (PREVIOUS RENEWALS, SURVEYS, ETC.)

- [01] ORIGINAL GLO SURVEY BY DENNIS HATHORN, D.S., DATED DECEMBER 26, 1853. *SET POST WITH 2 OAK BEARING TREES, MEASURED TO THE FACE.*
- [02] COUNTY SURVEY NO. 395 FIELD NOTES (BOOK 15, PAGE 56) BY W. C. GALLOWAY, C.S., DATED SEPTEMBER 24, 1913. *FOUND 1 GLO BEARING TREE, SET 3/8" X 2" IRON BAR WITH 1 NEW BEARING TREE.*
- [03] OLD CORNER RESTORATION BOOK NO. 1, PAGE 73 BY W. C. GALLOWAY, C.S., DATED SEPTEMBER 24, 1913. *FOUND BOTH GLO BEARING TREES, ONE STANDING AND ONE STUMP, SET 3/8" X 2" IRON BAR WITH 1 NEW BEARING TREE.*
- [04] CORNER RESTORATION NO. 2325. *TRANSCRIBED COPY OF RECORD [03] AND MAY CONTAIN ERRORS AND OMISSIONS.*
- [05] COUNTY SURVEY NO. 446 FIELD NOTES (BOOK 16, PAGE 51) BY W. C. GALLOWAY, C.S., DATED MAY 11, 1914. *NO CORNER DESCRIPTION.*
- [06] MAP NO. 14-5-00012 BY BENTON COUNTY, NO DATE GIVEN. *3/8" X 2" IRON BAR.*
- [07] MAP NO. 14-5-00006 BY BENTON COUNTY, NO DATE GIVEN. *3/8" X 2" IRON BAR.*
- [08] MAP NO. 14-5-00013 BY BENTON COUNTY, NO DATE GIVEN. *3/8" X 2" IRON BAR.*
- [09] COUNTY SURVEY NO. 2343 BY CHAS. C. BAYLES, P.E., DATED OCTOBER 1951. *NO DESCRIPTION.*
- [10] COUNTY ROAD NO. 45500 NOTES FOR "P" LINE, ROUTE 5B AND "L" LINE, BY BENTON COUNTY, NO DATE GIVEN. *FOUND 3/8" X 2" IRON BAR.*

COMMENTS/LOCATION/ETC:**HORIZONTAL AND VERTICAL INFORMATION:****HORIZONTAL DATUM:**

LATITUDE:

LONGITUDE:

VERTICAL DATUM:

ELLIPSOID ELEVATION:

ORTHOMETRIC ELEVATION:

GEOID SEPERATION:

STATE PLANE COORDINATE SYSTEM:

N (Y):

E (X):

SCALE FACTOR:

COMBINED FACTOR:

CONVERGENCE:

NOTES:

THIS IS A MICROSOFT WORD 97 DOCUMENT NAMED "45853030 CREATED FROM A BOILER PLATE DOCUMENT NAMED "HISTORY", WHICH HAS A STYLESHEET NAMED "CORNER" ATTACHED TO IT.
INFORMATION IN ***BOLD ITALICS*** IS COUNTY STAFFS' INTERPRETATION OF THE RECORD.

FIRM/AGENCY: BENTON COUNTY SURVEYOR'S OFFICE**ADDRESS:** 360 S.W. AVERY AVE. CORVALLIS OR 97333; PH. 757-6821**RESEARCH BY:** DAVID M. DEAN, P.L.S.**DATA ENTRY BY:** DAVID M. DEAN

BENTON COUNTY CORNER RESTORATION FORM, PAGE 1 OF 2, 145853030R2

SEE CORNER HISTORY FORM FOR RECORDS ETC.

CORNER RESTORATION FIELD BOOK NUMBER 18 PAGE(S) 13 AND 17 **DATE 8/10/1999**
TOWNSHIP 14 SOUTH, RANGE 5 WEST, WILLAMETTE MERIDIAN; SECTION 19 CORNER
DONATION LAND CLAIM JOHN LOOSE NO. 53 **CORNER SOUTHEAST**
CONDITION REPORT ___; **REFERENCED OUT** ___; **RENEWED** XX; **SURVEYED IN** ___

LOCATION AND COMMENTS:

CORNER IS LOCATED IN APPROXIMATE CENTER LINE OF MCFARLAND ROAD (COUNTY ROAD 45500). TO REACH CORNER FROM THE INTERSECTION OF DAWSON AND MCFARLAND ROAD, TRAVEL SOUTHERLY ON MCFARLAND ROAD FOR 1.2 MILES. CORNER IS OK FOR PREMARKING AND G.P.S. CONTROL.

MONUMENTS AND ACCESSORIES FOUND (CONDITION AND SOURCE):

FOUND 3/8" X 1 3/4" IRON BAR, 14" BELOW ROAD SURFACE, IN VERTICAL POSITION AS SET IN RECORD [02] FOR THE CORNER.
 (SET 3/8" X 2" IRON BAR PER RECORDS [02] & [03]).
 (3/8" X 2" IRON BAR PER RECORDS [06] - [08] AND [10]).

FOUND 34 1/2" W. OAK COUNTY SURVEYOR BEARING TREE WITH A HEALED FACE BEARING S32°23'W, 57.42 FEET (TO CENTER).
 SET ALUMINUM NAIL AND PLASTIC WASHER IN THE SOUTHEASTERLY BASE.
 (16" OAK, S33°W, 57.35 FEET PER RECORDS [02] AND [03]).

FOUND 3 1/4" BRASS DISK AT THE ANGLE POINT ON THE EAST LINE OF THE JOHN LOOSE D.L.C. NO. 53, (SEE RESTORATION NO. 145853020R2) BEARING N0°09'32"W, 504.73 FEET.
 (1" ROD PER RECORDS [02], [06], [07] AND [10]).

FOUND 23" X 16" X 16" STONE, 13" BELOW ROAD SURFACE (MCFARLAND ROAD) WITH AN "R" SCRIBED ON THE NORTH FACE AT THE NORTHEAST CORNER OF THE JESSE HAWLEY D.L.C. NO. 51 (SEE CORNER RESTORATION NO. 145851010R3), BEARING S0°15'16"E, 709.15 FEET.
 (6"X10"X20" STONE, SOUTH, 705.54 FEET PER RECORD [01]).
 (ORIGINAL GRANITE STONE, 16"X16"X20", S0°09'W, 708.71 FEET PER RECORD [02]).
 (ALSO SEE RECORDS [05] - [07] AND [10] FOR TIES TO THIS MONUMENT).

MONUMENT SET (PROCEDURES AND DESCRIPTION):

SET 2" I.D. X 36" GALVANIZED IRON PIPE (G.I.P.) WITH A 3 1/4" BRASS DISK, MARKED AS SHOWN, OVER THE CENTER OF SAID IRON BAR, 10" BELOW ROAD SURFACE FOR THE CORNER.

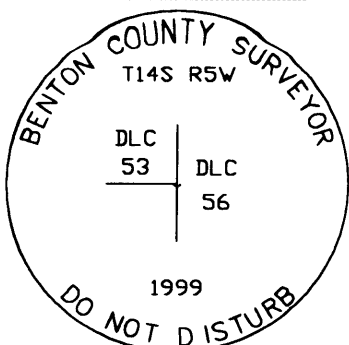
SKETCH

LEGEND

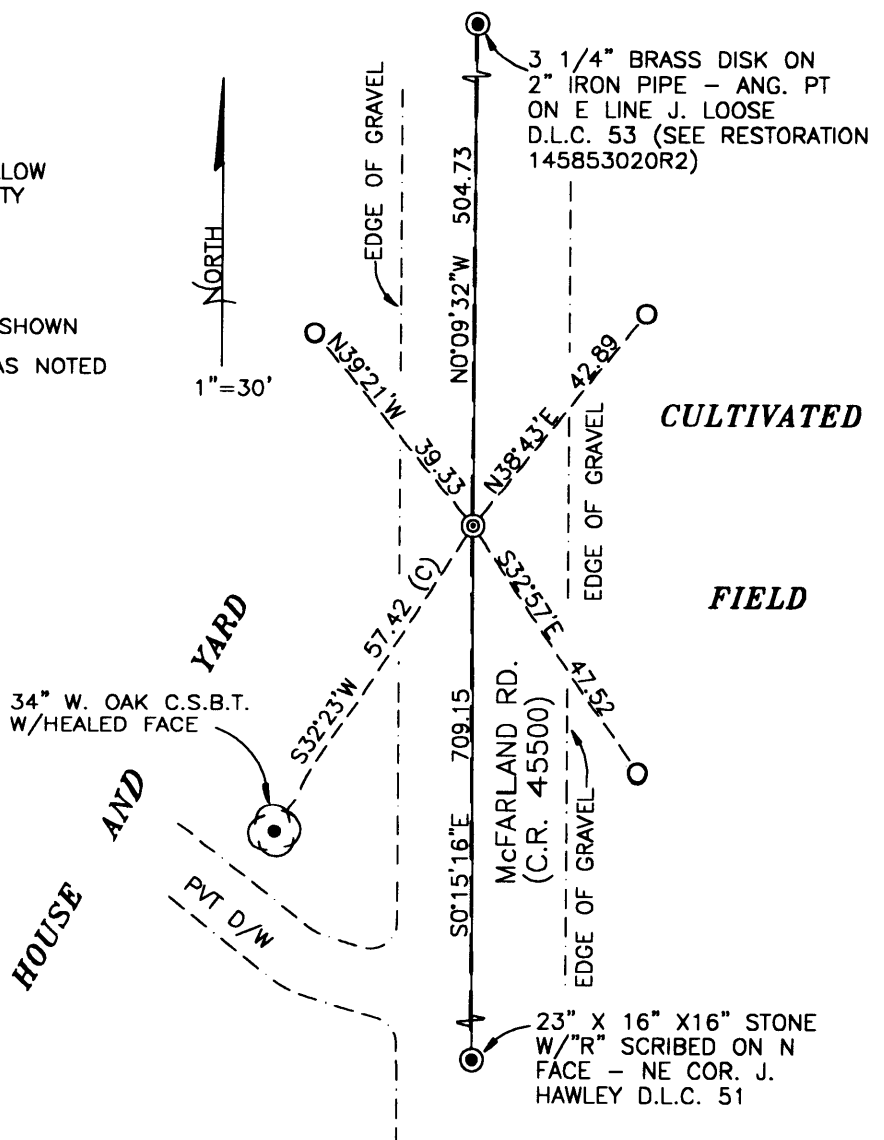
- SET 5/8" X 30" REBAR WITH YELLOW PLASTIC CAP MKD "BENTON COUNTY SURVEYOR"
- FOUND MONUMENT AS NOTED
- (C) MEASUREMENT TO CENTER
- ⊙ GOVERNMENT MONUMENT SET AS SHOWN
- ⊙ GOVERNMENT MONUMENT FOUND AS NOTED
- C.S.B.T. COUNTY SURVEYOR BEARING TREE
- ⊙ BEARING TREE AS NOTED

NOTE: BASIS OF BEARINGS C.S.395
 S7°08'E BETWEEN SW COR
 H. NOBLE D.L.C. 52 AND ANGLE
 POINT ON E LINE OF J. LOOSE
 D.L.C. NO. 53

MONUMENT DETAIL



3 1/4" BRASS DISK



**BENTON COUNTY CORNER RESTORATION FORM, PAGE 2 OF 2, 145853030R2
SEE CORNER HISTORY FORM FOR RECORDS ETC.**

NEW ACCESSORIES:

SET REBAR (SEE NOTES) 8" BELOW GROUND SURFACE (BGS) AT TOP OF BANK, 13.5 FEET WEST OF ROAD SHOULDER AND 3.8 FEET EAST OF A NORTH-SOUTH WOVEN AND BARBED WIRE FENCE, BEARING N39°21'W, 39.33 FEET.

SET REBAR (SEE NOTES) 8" BGS, 12 FEET EAST OF ROAD SHOULDER AND 0.6 FEET WEST OF A NORTH-SOUTH WOVEN AND BARBED WIRE FENCE, BEARING N38°43'E, 42.89 FEET.

SET REBAR (SEE NOTES) 8" DEEP, 11 FEET EAST OF ROAD SHOULDER AND 1 FOOT WEST OF NORTH-SOUTH WOVEN AND BARBED WIRE FENCE, BEARING S32°57'E, 47.52 FEET.

SET 6' ORANGE FIBERGLASS "SURVEY MARKER" POST 27 FEET EASTERLY IN NORTH-SOUTH FENCE LINE.

NOTES:

COMPASS DECLINATION IS 20° EAST. ALL MEASURED DISTANCES AND BEARINGS ARE TO THE CENTER OF THE OBJECT, UNLESS OTHERWISE NOTED. ALL BEARING TREES ARE PAINTED AND HAVE A B.T. TAG ATTACHED, FACING THE CORNER UNLESS OTHERWISE NOTED. ALL NEW BEARING TREES HAVE A PLASTIC WASHER (STAMPED "BENTON COUNTY SURVEYOR CORNER RESTORATION") ATTACHED (BY ALUMINUM NAIL) TO THE FACE, BELOW THE "BT" FOR DISTANCE AND ANGLE MEASUREMENT UNLESS OTHERWISE NOTED. ALL SET REBAR ARE 5/8" X 30" AND HAVE A YELLOW PLASTIC CAP (STAMPED "BENTON COUNTY SURVEYOR") ATTACHED TO THE TOP.

THIS DOCUMENT WAS NAMED AND CREATED IN A MANNER SIMILAR TO THE HISTORY FORM. THE NAME OF THE BOILER PLATE IS "MONUMENT". THE BORDER, STAMP AND SKETCH ARE FROM AUTOCAD RELEASE 14.

THIS RESTORATION WAS PERFORMED AT THE DIRECTION AND APPROVAL OF THE BENTON COUNTY SURVEYOR. AD

FIRM/AGENCY: BENTON COUNTY SURVEYOR'S OFFICE
ADDRESS: 360 S.W. AVERY AVE. CORVALLIS OR 97333; PH. 757-6821
SURVEYOR: DAVID M. DEAN, P.L.S.
SURVEY CREW: JOSH RUDIGER, SURVEY TECHNICIAN

REGISTERED
PROFESSIONAL
LAND SURVEYOR

David M. Dean 10-1-99

OREGON
JULY 13, 1984
DAVID M. DEAN
2090

EXPIRES: 12/31/99