

**146100140**

## CORNER FILE TRACKING

S:\Survey Corners\CORNERS\Templates\Filetrac2.doc  
10/04/2010

<b>CORNER NUMBER</b>
<b>146100140</b>

STEP	HISTORY()	RESTORATION()
Form Prepared, DB	1/11/2010	12/06/2011
Field Inspection, DB	12/02/2011	12/02/2011
Finish index (count unit)	12/02/2011	12/02/2011
Counter Index	12/05/2011	12/05/2011
GIS Index Form	12/06/2011	12/06/2011
Checked, DB	12/07/2011	12/07/2011
Form Edited, DB	12/07/2011	12/07/2011
Form Signed, DB	12/07/2011	12/07/2011
Authorize Payment, DB	—	—
Archive Digital Files	12/07/2011	12/07/2011
Collect Documents	12/07/2011	12/07/2011
PDF File	12/07/2011	12/07/2011
Copy For Filming	12/07/2011	12/07/2011
Scanned (pdf to laserfiche)	12/07/2011	12/07/2011
Filmed (Archived), DB		
Filed, DB		

(DB) = Entry needed in database (Access).

### COMMENTS:

DATE 01/11/2010TOWNSHIP 14 SOUTH, RANGE 06 WEST, WILLAMETTE MERIDIAN; SECTION 31 CORNER WEST 1/4  
DONATION LAND CLAIM N/A CORNER N/A**COMMON CORNER(S):**

EAST 1/4 OF SECTION 36 T. 14 S. R. 7 W.

**RECORDS (INFORMATION IN *BOLD ITALICS* IS COUNTY STAFFS' INTERPRETATION OF THE RECORD)**

BASED ON EXTENSIVE RESEARCH AND RECOVERY OF EVIDENCE, THIS OFFICE HAS DETERMINED THAT MOST GENERAL LAND OFFICE SURVEYORS MEASURED TO THE FACE OF BEARING TREES.

- [01] GENERAL LAND OFFICE (GLO) NOTES BY K. WEBSTER, D.S., DATED DECEMBER 27, 1853. SET A POST. MARKED A 12" FIR S37°E, 21 LKS. (13.86 FT.) AND A 10" LAUREL S59°W, 43 LKS. (28.38 FT.).
- [02] COUNTY SURVEY NO. 1437 (OLD NO. 336) FIELD NOTES (BOOK NO. 109, PAGE 86) BY BURT WILKES, D.C.S., DATED MARCH 11, 1941. FOUND STAKE HOLE 1' WEST OF A 4 X 4 GREEN FIR STAKE SET BY F. A. TRIPP IN 1940. SET A 1/2" X 30" GALV. PIPE. FOUND A 12" FIR (GLO BT) S37°E, 13.86 FT. (21 LKS.). MARKED A 36" FIR STUMP N37°E, 25.08 FT. TO HEART AND A 28" FIR N30°W, 18.2 FT.
- [03] CORNER RESTORATION BOOK NO. 1, PAGE 228 BY BURT WILKES, D.C.S., DATED MARCH 11, 1941. SET A 1/2" X 30" GALV. PIPE. FOUND A 12" (NOW 24") FIR (GLO BT) S37°E, 13.86 FT. (21 LKS.), STANDING. MARKED A 36" FIR STUMP N37°E, 25.08 FT. (38.0 LKS) AND A 28" FIR N30°W, 18.20 FT. (27.6 LKS.).
- [04] CORNER RESTORATION NO. 2403. TRANSCRIBED FROM RECORD [03] AND MAY CONTAIN ERRORS AND/OR OMISSIONS.
- [05] BENTON COUNTY MAP NO. 14-7-00003 BY BURT WILKES, D.C.S., DATED APRIL 1941 AND W. C. GALLOWAY, C.S., DATED JUNE 3, 1943. 1/2" X 30" G. PIPE. 12" (NOW 24") FIR (GLO BT) S37°E, 0.21 CHS. (13.86 FT.), STANDING. MARKED A 36" FIR STUMP N37°E, 0.380 CHS. (25.08 FT.). MARKED A 28" FIR N30°W, 0.276 CHS. (18.20 FT.).
- [06] COUNTY SURVEY NO. 8894 BY JIM PETERSON, P.L.S., DATED OCTOBER 10, 1994. GALLOWAY PIPE DESTROYED BY OLD CAT ROAD. SET A 3/4" X 30" IRON PIPE WITH PLASTIC CAP (LS 1084) AT RECORD DISTANCE FROM FOUND BEARING TREES. FOUND A 26" FIR STUMP (GLO BT) S37°E, 21 LKS. (13.86 FT.), CHOPPED FACE, A 36" FIR STUMP (CSBT) N37°E, 0.380 CHS. (25.08 FT.), NO MARKS VISIBLE AND A 42" FIR STUMP (CSBT) N30°W, 0.276 CHS. (18.20 FT.), HEALED FACE. MARKED A 12" FIR N54°E, 28.8 FT., MARKED "1/4S31BT" AND AN 8" FIR N22°W, 26.7 FT., MARKED "1/4S36BT".

**NOTES:**

THIS IS A MICROSOFT WORD 2003 DOCUMENT NAMED "46100140" CREATED FROM A BOILER PLATE DOCUMENT NAMED "HISTORY", WHICH HAS A STYLESHEET NAMED "CORNER" ATTACHED TO IT.

**FIRM/AGENCY:** BENTON COUNTY SURVEYOR'S OFFICE  
**ADDRESS:** 360 S.W. AVERY AVE. CORVALLIS OR 97333; PH. 766-6821  
**RESEARCH BY:** BERNARD S. ALTENBACH, ENGINEER/SURVEY TECH.  
**DATA ENTRY BY:** SAME

**BENTON COUNTY CORNER RESTORATION FORM, PAGE 1 OF 2, 146100140R2****SEE CORNER HISTORY FORM FOR RECORDS ETC.**

CORNER RESTORATION FIELD BOOK NUMBER 29 PAGE(S) 29 DATE 12/02/2011  
TOWNSHIP 14 SOUTH, RANGE 6 WEST, WILLAMETTE MERIDIAN; SECTION 31 CORNER WEST 1/4  
DONATION LAND CLAIM N/A CORNER N/A  
CONDITION REPORT \_\_\_\_\_; REFERENCED OUT \_\_\_\_\_; RENEWED XX; SURVEYED IN \_\_\_\_\_

**LOCATION AND COMMENTS:**

CORNER IS LOCATED IN A DRAINAGE CHANNEL IN AN OLD SKID ROAD RUNNING EAST-WEST IN A STEEP DRAW RUNNING DOWNHILL TO THE WEST. TO REACH CORNER FROM THE INTERSECTION OF BELLFOUNTAIN ROAD AND ALPINE ROAD, DRIVE WESTERLY ON ALPINE ROAD, CONTINUING WESTERLY WHEN IT BECOMES BLM SOUTH FORK ROAD, FOR 9.23 MILES TO BLM ROAD 14-6-9 (MILLER ROAD/100 ROAD). TURN RIGHT AND FOLLOW BLM ROAD 14-6-9 FOR 0.50 MILES TO THE BLOCKED ENTRY OF BLM ROAD 14-7-36.3 ON THE RIGHT. PARK AND WALK S5°W, 1,700 FEET. CORNER IS BAD FOR PREMARKING AND GPS CONTROL.

**MONUMENTS AND ACCESSORIES FOUND (CONDITION AND SOURCE):**

1. FOUND 3/4" X 30" INSIDE DIAMETER IRON PIPE WITH YELLOW PLASTIC CAP MARKED "LS 1084" INSIDE, STICKING 6" ABOVE GROUND LEVEL AND SURROUNDED BY STONES. PIPE APPEARS TO HAVE BEEN PLACED AT A SLIGHT ANGLE TO THE SOUTH TO BYPASS THE STONES BELOW GROUND, AND THEN BENT AND FLATTENED ON TOP FOR THE CORNER POSITION.  
(SET POST PER RECORD [01]).  
(FOUND STAKE HOLE AND SET 1/2" X 30" GALV. IRON PIPE PER RECORDS [02] AND [03]).  
(1/2" X 30" G. PIPE PER RECORD [05]).  
(PIPE DESTROYED BY OLD CAT ROAD, SET 3/4" X 30" IRON PIPE WITH PLASTIC CAP [LS 1084] AT RECORD DISTANCE FROM FOUND BEARING TREES PER RECORD [06]).
2. FOUND 10" D. FIR WITH HEALED FACE, N22°00'00"W, 26.74 FEET TO CENTER. SET ALUMINUM NAIL AND PLASTIC WASHER IN SOUTHWESTERLY BASE FOR DISTANCE MEASUREMENT. BASIS OF BEARINGS FOR THIS RESTORATION.  
(8" FIR, N22°W, 26.7 FEET MARKED "1/4S36BT" PER RECORD [06]).
3. FOUND BADLY ROTTED 24" D. FIR STUMP WITH NO VISIBLE MARKS, N35°02'E, 24.82 FEET TO CENTER.  
(MARKED 36" FIR STUMP, N37°E, 25.08 FEET TO HEART PER RECORD [02]).  
(MARKED 36" FIR STUMP, N37°E, 25.08 FEET [38.0 LINKS] PER RECORD [03]).  
(MARKED 36" FIR STUMP, N37°E, 0.380 CHAINS [25.08 FEET] PER RECORD [05]).  
(36" FIR STUMP, N37°E, 0.380 CHAINS [25.08 FEET], NO MARKS VISIBLE PER RECORD [06]).
4. FOUND 15" D. FIR WITH HEALED FACE, N51°06'E, 28.65 FEET TO CENTER. SET ALUMINUM NAIL AND PLASTIC WASHER IN SOUTHEASTERLY BASE FOR DISTANCE MEASUREMENT.  
(12" FIR, N54°E, 28.8 FEET MARKED "1/4S31BT" PER RECORD [06]).
5. FOUND 21" D. FIR STUMP WITH CHOPPED AND BURNT FACE AND NO VISIBLE MARKS, S37°14'E, 12.81 FEET TO CENTER. THIS IS THE PROBABLE REMAINS OF THE SOUTHEAST GLO BEARING TREE.  
(MARKED A 12" FIR, S37°E, 21 LINKS [13.86 FEET] PER RECORD [01]).  
(FOUND 12" FIR, S37°E, 13.86 FEET [21 LINKS] AS PER RECORD [02]).  
(FOUND 12" [NOW 24"] FIR, S37°E, 13.86 FEET [21 LINKS] STANDING PER RECORD [03]).  
(12" [NOW 24"] FIR, S37°E, 0.21 CHAINS [13.86 FEET] STANDING PER RECORD [05]).  
(FOUND 26" FIR STUMP, S37°E, 21 LINKS [13.86 FEET] WITH CHOPPED FACE PER RECORD [06]).
6. FOUND BADLY ROTTED 31" D. FIR STUMP. WE OPENED STUMP TO VISIBLE SCRIBING "CS336" ON UPPER BLAZE AND "BT" ON LOWER BLAZE, N35°45'W, 17.02 FEET TO THE UPPER FACE. THIS TREE APPEARS TO BE LEANING AND SLIDING DOWNHILL TO THE WEST FROM ITS ORIGINAL POSITION.  
(MARKED 28" FIR, N30°W, 18.2 FEET PER RECORD [02]).  
(MARKED 28" FIR, N30°W, 18.20 FEET [27.6 LINKS] PER RECORD [03]).  
(MARKED 28" FIR, N30°W, 0.276 CHAINS [18.20 FEET] PER RECORD [05]).  
(42" FIR STUMP, N30°W, 0.276 CHAINS [18.20 FEET] WITH HEALED FACE PER RECORD [06]).

**MONUMENT SET (PROCEDURES AND DESCRIPTION):**

HELD THE POSITION OF THE CAP IN THE TOP OF THE 3/4" PIPE FOR THE TRUE CORNER POSITION, WHICH COMPARES WELL WITH THE ABOVE ACCESSORIES FOUND. REFERENCED AND REMOVED THE 3/4" PIPE AND SET A 2" X 31-1/2" GALVANIZED IRON PIPE WITH A 3-1/4" BRASS DISK CONCRETED IN THE TOP, STICKING 3" ABOVE GROUND LEVEL AND MARKED AS SHOWN ON PAGE 2 OF 2. PLACED 3/4" PIPE ON WEST SIDE OF NEW MONUMENT IN HORIZONTAL POSITION AND PLACED STONES AROUND NEW MONUMENT. SET A 6 FOOT ORANGE CARSONITE "SURVEY MARKER" POST 2.0 FEET SOUTH OF NEW MONUMENT.

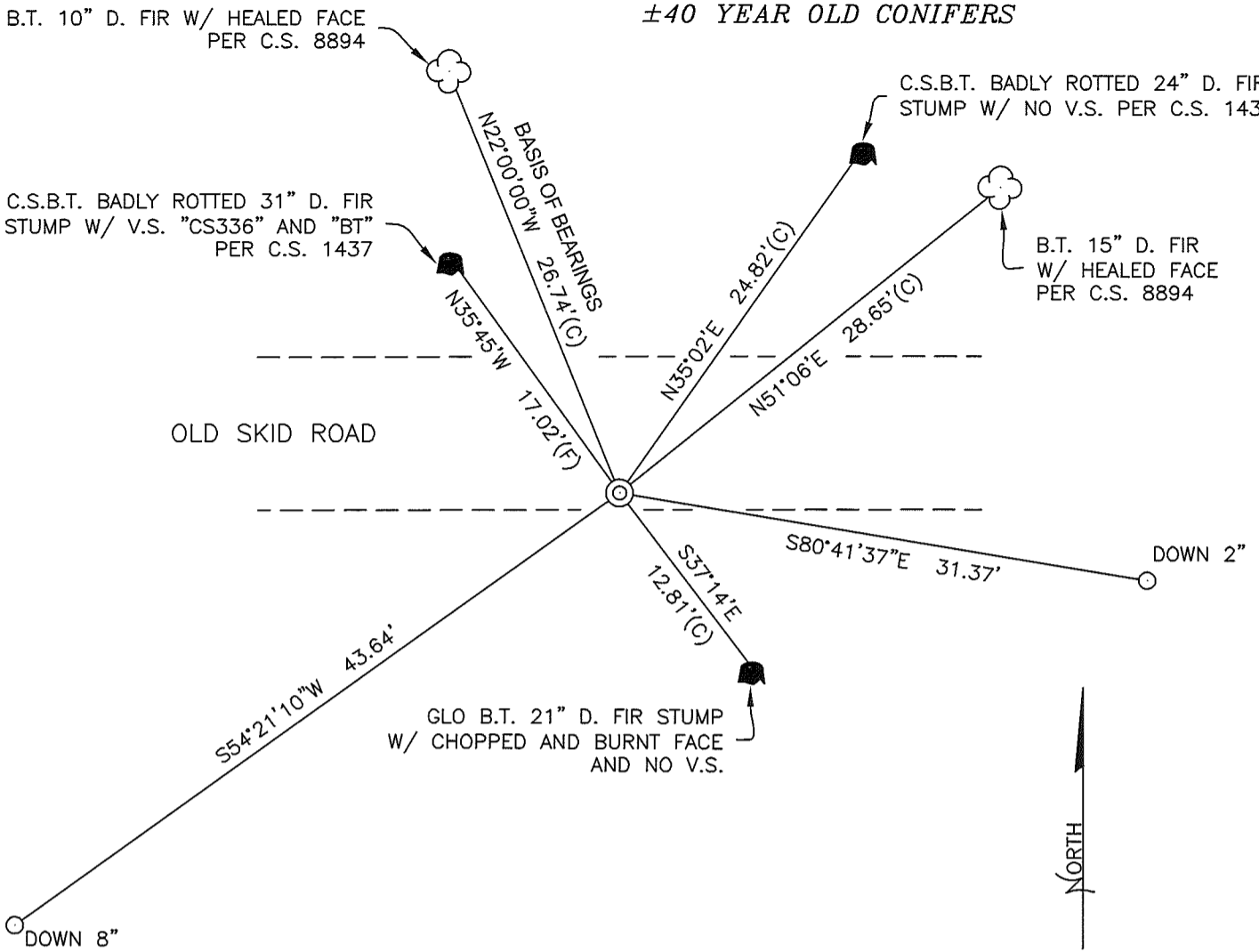
B.T. 10" D. FIR W/ HEALED FACE  
PER C.S. 8894

±40 YEAR OLD CONIFERS

C.S.B.T. BADLY ROTTED 31" D. FIR  
STUMP W/ V.S. "CS336" AND "BT"  
PER C.S. 1437

C.S.B.T. BADLY ROTTED 24" D. FIR  
STUMP W/ NO V.S. PER C.S. 1437

B.T. 15" D. FIR  
W/ HEALED FACE  
PER C.S. 8894



OLD SKID ROAD

GLO B.T. 21" D. FIR STUMP  
W/ CHOPPED AND BURNT FACE  
AND NO V.S.

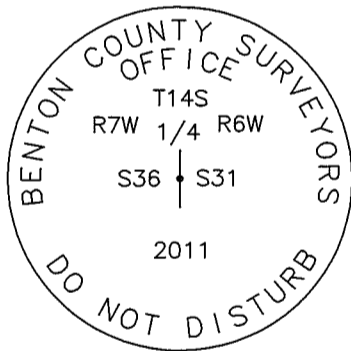


1" = 10'

BEARINGS FROM C.S. 8894

±40 YEAR OLD CONIFERS

MONUMENT DETAIL



3-1/4" BRASS DISK

LEGEND

- SET 5/8" X 30" REBAR WITH YELLOW PLASTIC CAP MARKED "BENTON COUNTY SURVEYOR"
- (F) MEASUREMENT TO FACE
- (C) MEASUREMENT TO CENTER
- ⊙ GOVERNMENT MONUMENT SET AS SHOWN
- V.S. VISIBLE SCRIBING
- C.S. COUNTY SURVEY
- C.S.B.T. COUNTY SURVEYOR'S BEARING TREE
- GLO GENERAL LAND OFFICE
- B.T. BEARING TREE
- BEARING TREE STUMP AS NOTED
- ☁ BEARING TREE AS NOTED

NEW ACCESSORIES:

1. SET REBAR (SEE LEGEND) S54°21'10"W, 43.64 FEET AND 8" BELOW GROUND LEVEL.
2. SET REBAR (SEE LEGEND) S80°41'37"E, 31.37 FEET AND 2" BELOW GROUND LEVEL.

NOTES:

COMPASS DECLINATION IS 20° EAST. ALL MEASURED DISTANCES AND BEARINGS ARE TO THE CENTER OF THE OBJECT, UNLESS OTHERWISE NOTED. ALL BEARING TREES ARE PAINTED AND HAVE A B.T. TAG ATTACHED, FACING THE CORNER UNLESS OTHERWISE NOTED. ALL NEW BEARING TREES HAVE A PLASTIC WASHER (STAMPED "SURVEYOR MARKER DO NOT REMOVE") ATTACHED BY AN ALUMINUM NAIL TO THE FACE, BELOW THE "BT" FOR DISTANCE AND ANGLE MEASUREMENT UNLESS OTHERWISE NOTED. THE DRAWING IS FROM AUTOCAD RELEASE 2010.

THIS RESTORATION WAS PERFORMED AT THE DIRECTION AND APPROVAL OF THE BENTON COUNTY SURVEYOR *J. [Signature]*

REGISTERED  
PROFESSIONAL  
LAND SURVEYOR

12-07-2011 *David L. Malone*

FIRM/AGENCY: BENTON COUNTY SURVEYOR'S OFFICE  
ADDRESS: 360 S.W. AVERY AVE. CORVALLIS, OR. 97333; PH. 766-6821  
PRESENT: DAVID L. MALONE, P.L.S. AND BERNIE ALTENBACH, SURVEY TECH.  
EQUIPMENT: NIKON NIVO3.C AND SURVEY PRO ONBOARD

OREGON  
JANUARY 12, 1999  
DAVID L. MALONE  
51523

RENEWAL DATE: 12/31/12

- C.S. 79  
by W.C. Galloway  
Adrian Seits  
Aug. 1940  
N.W. Corner of Jacob Halter D.L.C. 73 7 10 S. R. 4 W.  
Set a  $\frac{7}{8}$ " Steel rod proportional distance on sec. line at north fence  
for corner and a 1" steel rod at south road fence. S. 0° 20' E. .53
- C.S. #136  
by F.M. Wilkes  
J. Slater and  
Elmer Maxfield  
Apr. 30, 1913  
N.E. Corner of Alfred Wilham C1.55 T.11 S. R. 5 W.  
Set a  $\frac{1}{2}$ " Iron rod  
Oak 29" S. 73° W. .88 chs. Std.  
" 15" N. 66° E. .63 " "  
" 18" N. 15½° W. .59 " "
- C.S. # 199  
Burt Wilkes  
R.W. McBride  
R. Underwood  
(Recording Only)  
Cor. Secs 9, 10, 15 & 16 T.11 S., R. 7 W. March 20, 1941  
Found  $\frac{1}{2}$ " iron pipe at West face of large Bolt with 3" Oct. Head - Used Bolt as cor.  
None of original Trees standing.  
Monument is in Door Yard S.W. of S.W. corner of House
- W.C. Galloway  
C.S. 336  
Sept. 19, 1938  
S.W. Corner John W. Starr D.L.C. No. 54 - T.14 S. R. 6 W.  
Set  $1\frac{1}{4}$ " Galv. Pipe for corner from which  
A Fir .50" in dia. bears N. 87° W. .45 Lks.  
" " 50" " " " N. 50° E. 16 " Burned out - Down  
Mark " Maple 20" " " " S. 56° E. 16.8 " Nail on N. side
- Burt Wilkes  
C.S. 336  
Witness  
Ray W. McBride  
Cor. Secs. 30 & 31 - of 6 W and 25 & 36 T.14 S. R. 7 W. Mar 10, 1941  
Set  $\frac{1}{2}$ " x 30" Galv. Pipe in original stake hole  
All three fir B.T.s Standing - Cedar in sec. 31 cut about 8' high
- $\frac{1}{4}$  Sec. Cor. Secs. 31 & 36, T.14 S. R. 6 & 7 W. Mar 11, 1941  
Same as  
above.  
Set  $\frac{1}{2}$ " x 30" Galv. Pipe, from which  
A Fir 12 (Now 21) bears S. 37° E. 13.86' = 21 links Std.  
Mark Fir 28" " " N. 30° W. 18.2' = 27.6 "  
" " Stamp 36" " " N. 37° E. 25.08' = 38.0 "
- $\frac{1}{4}$  Sec. Cor.  
Ralph McBryde  
Bob Underwood  
 $\frac{1}{4}$  Sec. Cor. Secs. 25 & 30 - T.14 S. R. 6 & 7 W. April 24, 1941  
Set  $\frac{1}{2}$ " x 30" Galv. Pipe Original Hole.  
Both B.T.s. Standing & agree - S.W. Tree dead.  
Mark. Hemlock. 16" in dia. Bears S. 72½° W 58.9' H 62° slope  $\angle = 56.47' = 85.6$  links
- B. Wilkes  
Witness  
Geo Bacur  
Bob Underwood  
 $\frac{1}{4}$  sec cor. between Secs. 25 and 36 - <sup>14-7</sup> W.C. to true corner.  $\approx 40.0$  S. of True Cor.  
Set stone 3" x 12" x 30" + on top - W.C. on N. face } This Cor. was established on  
Cedar 30" in dia. Bears S. 72½° E. 70.1' = 1.062 } proportional dist. and 40.0 S. of  
FIR 10" " " " S. 12¾° E. 47.3' = .716 } true line between sec. cors.  
True point comes in Alsea River.
- ~~same~~ B.W  
Bob Underwood  
Ray McBride  
Ralph McBryde  
Cor. to Secs. 25, 26, 35 & 36. 14-7 April 19, 1941  
Set stone 3" x 8" x 15" marked + on top C.S. on face Orig Hole.  
Cedar (Alder in 1 set notes) 10" (14") S. 54° E. 104.6' Std. = 1.585'  
FIR 4" (48" ins in dia bears N. 61½° E. 38.3' <sup>plus 100' in</sup> No Mks. .580'  
Mark Fir 7" in dia. bears S. 88½° W. 123.3' 1.868  
" Cedar 34" " " " N. 2° 15' W. 93.46' - 8° slope  $\angle = 91.06' = 1387$

$\frac{1}{4}$ -Section corner sections 31 and 36, Twp. 14 S., R. 6 and 7 W. 2403

Reestablishment by W. C. Galloway

March 11, 1941

Set  $\frac{1}{2}$ " x 30" galvanized pipe

Fir 12" in diam bears S 37° E

21 links

Fir 28" in diam bears N 30° W

27.6 links

Fir Stump 36" in diam bears N 37° E

38.0 links

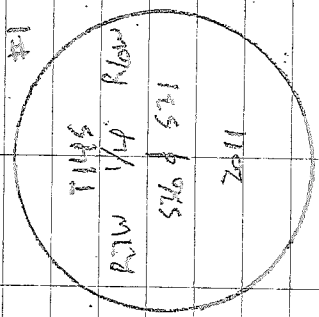
Witness Ray W. McBride.

29/29

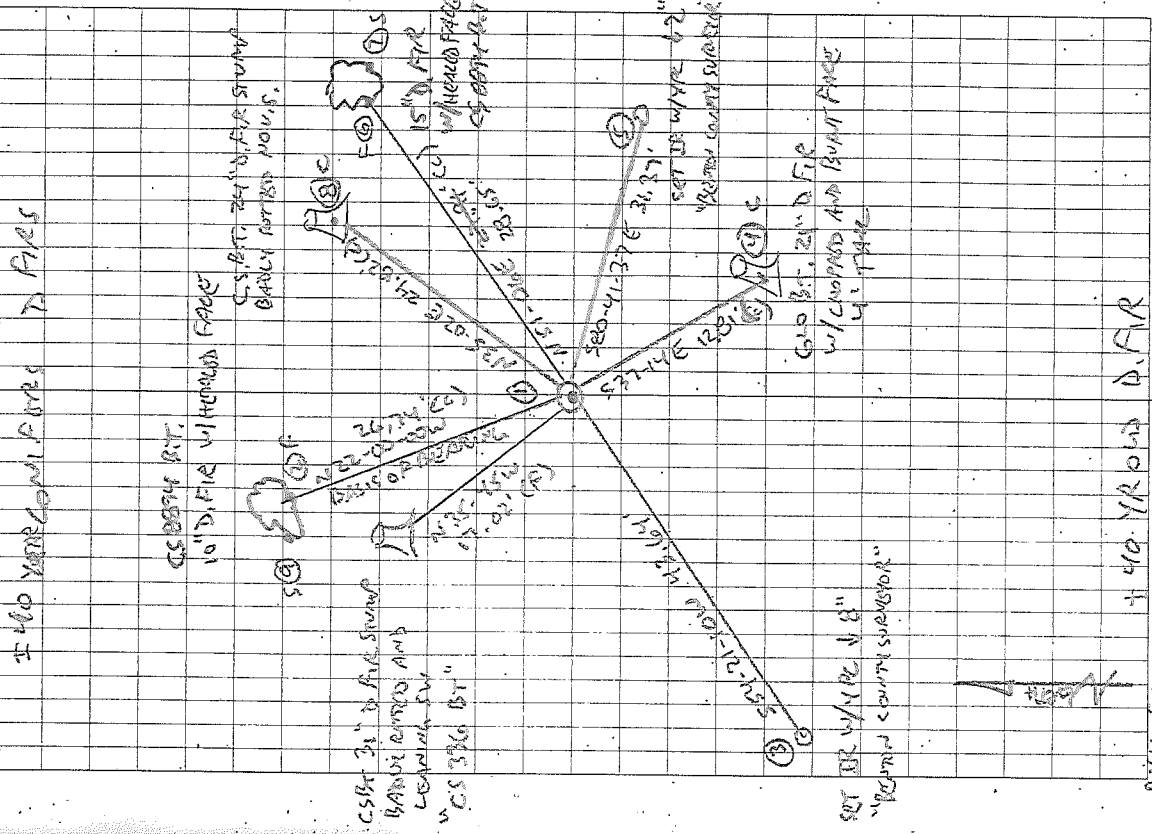
CS 8894, COND  
 45°F, 29.75 in Hg  
 1460 11003.6  
 SURVEYED ON ROAD

1460100110  
 1/4 TMS  
 RE-MONUMENTING RTW 5 R6 f 531 ROW

RD 3/4" I.D. I.P. W/ W/ 1084" 10810E. UP 6" T  
 SLIGHT LEAN SOUTHERN DUE TO BEING PLACED IN ROCKS.  
 HAD CAP FOR 1/4 POSTION. RED T-POST NORTH 1.2'  
 4' OUT OF GROUND. MONUMENT IN DRAINAGE CHANNEL.  
 IN OLD SWD ROAD RUMBLE EAST-WEST. IN EAST-  
 WEST DRAIN. REFERENCED AND REMOVED 3/4" DP  
 AND SET 2" x 3 1/2" C.I.P. W/ 1/4" BRASS DISK  
 CONC. IN TOP 3" ABOVE GROUND. MARKED AS SHOWN  
 BELOW. PLACED LARGE STAKES AROUND MONUMENT FOR  
 PROTECTION. SET 6' ORANGE CAPS ON THE "SUBSTANTIAL"  
 POST 2' SOUTH OF MONUMENT, AND 3 1/4" DP  
 ALONG WEST END OF MONUMENT UNDER STONES. FD  
 SET GLOBE BT, NE CSBT, NW CSBT ALL STAKES. FD.  
 CS 8894 NW BT AND NE BT STANDING. HOLD NW BT  
 FOR BASIS OF BOUNDARIES PER CS 8894. SET 2 IRON RODS  
 IN ACCESSORIES.



B. ALTON ACH  
 D. PILES



CS 8894  
 BASIS OF BEARINGS