

146100340

CORNER FILE TRACKING

S:\Survey Corners\CORNERS\Templates\Filetrac2.doc
10/04/2010

CORNER NUMBER
146100340

STEP	HISTORY	RESTORATION
Form Prepared, DB	01/04/2010	3/30/17
Field Inspection, DB	11/09/16	11/09/16
Finish index (count unit)	01/04/2010	11/09/16
Counter Index	11/09/16	11/09/16
GIS Index Form	11/09/16	11/09/16
Checked, DB	3/30/17	3/30/17
Form Edited, DB	3/30/17	3/30/17
Form Signed, DB	3/30/17	3/30/17
Authorize Payment, DB	—	—
Archive Digital Files	3/30/17	3/30/17
Collect Documents	3/30/17	3/30/17
PDF File	3/30/17	3/30/17
Copy For Filming	3/30/17	3/30/17
Scanned (pdf to laserfiche)	3/30/17	3/30/17
Filmed (Archived), DB		
Filed, DB		

(DB) = Entry needed in database (Access).

COMMENTS:

BENTON COUNTY CORNER HISTORY FORM, PAGE 1 OF 1, 146100340H2

DATE 01/04/2010

TOWNSHIP 14 SOUTH, RANGE 06 WEST, WILLAMETTE MERIDIAN; SECTION 19 CORNER WEST 1/4
DONATION LAND CLAIM N/A CORNER N/A

COMMON CORNER(S):

EAST 1/4 CORNER OF SECTION 24, TOWNSHIP 14 SOUTH, RANGE 7 WEST

RECORDS (INFORMATION IN BOLD ITALICS IS COUNTY STAFFS' INTERPRETATION OF THE RECORD)

BASED ON EXTENSIVE RESEARCH AND RECOVERY OF EVIDENCE, THIS OFFICE HAS DETERMINED THAT MOST GENERAL LAND OFFICE SURVEYORS IN BENTON COUNTY MEASURED TO THE FACE OF BEARING TREES.

[01] GENERAL LAND OFFICE (GLO) NOTES BY KIMBALL WEBSTER, D.S., DATED DECEMBER 24, 1853. SET A POST. A CEDAR 24" DIA BEARS S63-1/2°E, 46 LINKS (30.36 FEET); A MAPLE 15" DIA BEARS S85°W, 39 LINKS (25.74 FEET).

[02] BENTON COUNTY SURVEY NO. 2333 (OLD NO. 157) FIELD NOTES (BOOK NO. 78, PAGE 47) BY W. C. GALLOWAY, C.S., DATED JUNE 3, 1939. SET A 6" X 12" X 24" STONE WITH A 1/2" PIPE OVER, AT THE SOUTH EDGE OF A CREEK. FOUND A CEDAR 24" DIA (GLO BT) BEARS S63-1/2°E, 0.46 CHAINS (30.36 FEET). MAPLE GONE. A CEDAR 9" DIA BEARS N19-1/2°E, 0.465 CHAINS (30.96 FEET); A HEMLOCK 7" DIA BEARS N58°40'W, 0.373 CHAINS (24.62 FEET), TO THE STRAIGHT PART.

[03] BENTON COUNTY CORNER RESTORATION BOOK NO. 1, PAGE 224 BY W. C. GALLOWAY, C.S., DATED JUNE 3, 1939. SET A 6" X 12" X 24" STONE, AT THE SOUTH EDGE OF A CREEK, WITH A 1/2" PIPE DRIVEN AT AN ANGLE, TOP CORRECT. FOUND A CEDAR 24" DIA (GLO BT) BEARS S63-1/2°E, 0.46 CHAINS (30.36 FEET), STANDING. MAPLE GONE. MARKED A CEDAR 9" DIA BEARS N19-1/2°E, 0.465 CHAINS (30.96 FEET); A HEMLOCK 7" DIA BEARS N58°40'W, 0.373 CHAINS (24.62 FEET), TO THE STRAIGHT PART.

[04] BENTON COUNTY CORNER RESTORATION NO. 2390. TRANSCRIBED FROM RECORD [03] AND MAY CONTAIN ERRORS AND/OR OMISSIONS.

[05] BENTON COUNTY MAP NO. 14-6&7-00010, NO DATE OR DRAFTSMAN GIVEN. 6" X 12" X 24" STONE. CEDAR 24" DIA (GLO BT) BEARS S63-1/2°E, 0.46 CHAINS (30.36 FEET), STANDING. CEDAR 9" DIA BEARS N19-1/2°E, 0.465 CHAINS (30.96 FEET). HEMLOCK 7" DIA BEARS N58°40'W, 0.373 CHAINS (24.62 FEET).

[06] BENTON COUNTY SURVEY NO. 1926 (OLD NO. 157) FIELD NOTES (LOOSE LEAF) BY CURTIS C. HANSON, D.C.S., DATED JULY 31, 1947. FOUND 5/8" ROD BENT OVER ROCK ON CREEK BANK. 3 TREES STANDING GREEN – HEMLOCK AND 2 CEDARS.

[07] BENTON COUNTY SURVEY NO. 1933 (OLD NO. 157) FIELD NOTES (LOOSE LEAF) BY CURTIS C. HANSON, D.C.S., DATED AUGUST, 1947. TIED BUT NOT DESCRIBED.

[08] BENTON COUNTY SURVEY NO. 3628 BY LEO J. MARTIN, P.L.S., DATED MAY 14, 1962. NO STONE FOUND. FOUND A CEDAR 40" DIA (GLO BT) BEARS S63°E, 30.4 FEET, A CEDAR 9" DIA (CSBT) BEARS N19°30'E, 30.7 FEET; A HEMLOCK 7" DIA (CSBT) BEARS N58°40'W, 24.6 FEET. MARKED A FIR STUMP 54" DIA BEARS N4°E, 77.2 FEET, SCRIBED "1/4S19BT" AND A FIR STUMP 100" DIA BEARS N42°W, 103.6 FEET, SCRIBED "1/4S24BT". ROAD IS BEING CONSTRUCTED OVER CORNER POINT.

[09] BENTON COUNTY CORNER RESTORATION NO. 2390. TRANSCRIBED FROM RECORD [08] AND MAY CONTAIN ERRORS AND/OR OMISSIONS.

[10] BENTON COUNTY SURVEY NO. 9409 BY JIM PETERSON, P.L.S., DATED MARCH 18, 1999. SET A 5/8" X 30" IRON ROD WITH A PLASTIC CAP MARKED "LS1084". FOUND A FIR STUMP 54" DIA BEARS N03°44'E, 77.20 FEET, NO MARKS VISIBLE; A FIR STUMP 84" DIA BEARS S42°51'W, 103.60 FEET, WITH SCRIBING VISIBLE. FIR 16" DIA BEARS N83°E, 37.6 FEET, MARKED "1/4S19BT"; FIR 12" DIA BEARS S47°E, 29.0 FEET, MARKED "1/4S19BT"; HEMLOCK 10" DIA BEARS S35°W, 32.0 FEET, MARKED "1/4S24BT"; FIR 14" DIA BEARS N51°W, 89.4 FEET, MARKED "1/4S24BT".

[11] BENTON COUNTY SURVEY NO. 9840 BY JIM PETERSON, P.L.S., DATED OCTOBER 31, 2003. FOUND A 5/8" X 30" IRON ROD WITH A PLASTIC CAP MARKED "LS1084". FOUND A FIR STUMP 54" DIA BEARS N03°44'E, 77.20 FEET, NO MARKS VISIBLE; A FIR STUMP 84" DIA BEARS S42°51'W, 103.60 FEET, WITH SCRIBING VISIBLE; A FIR 22" DIA BEARS N83°E, 37.6 FEET, WITH A HEALED FACE; A FIR 14" DIA BEARS S47°E, 29.0 FEET, WITH A HEALED FACE; A HEMLOCK 12" DIA BEARS S35°W, 32.0 FEET, WITH SCRIBING VISIBLE; A FIR 16" DIA BEARS N51°W, 89.4 FEET, WITH A HEALED FACE.

FIRM/AGENCY: BENTON COUNTY SURVEYOR'S OFFICE

ADDRESS: 360 S.W. AVERY AVE., CORVALLIS, OR 97333; PH. 541-766-6821

RESEARCH BY: BERNARD S. ALTENBACH, ENGINEER/SURVEY TECH AND DAVID M. DEAN, P.L.S.

DATA ENTRY BY: SAME

BENTON COUNTY CORNER RESTORATION FORM, PAGE 1 OF 2, 146100340R2
SEE CORNER HISTORY FORM FOR RECORDS ETC.

CORNER RESTORATION FIELD BOOK NUMBER 31 PAGE(S) 18

DATE 11/09/2016

TOWNSHIP 14 SOUTH, RANGE 6 WEST, WILLAMETTE MERIDIAN; SECTION 19 CORNER WEST 1/4

DONATION LAND CLAIM N/A CORNER N/A

CONDITION REPORT ; REFERENCED OUT ; RENEWED X; SURVEYED IN

LOCATION AND COMMENTS:

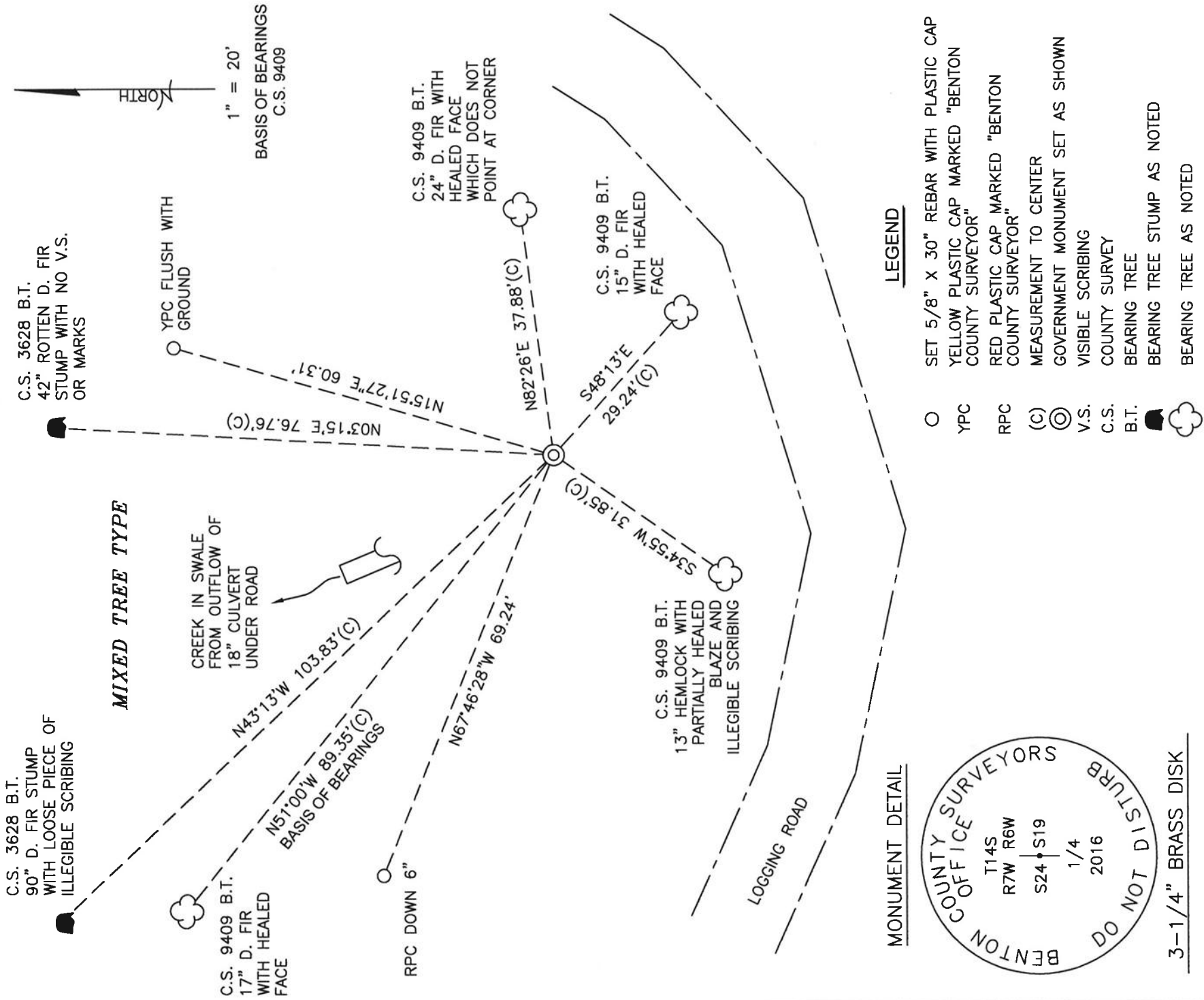
CORNER IS LOCATED ON A VERY STEEP NORTH FACING SLOPE IN THE FILL SLOPE OF THE ROAD. THE CREEK OF RECORD IS NOW PIPED UNDER THE ROAD. THERE ARE SCATTERED FIRS AND YOUNG HARDWOODS IN THE DRAW FORMED BY THE ROAD CROSSING THE CREEK. TO REACH CORNER FROM THE INTERSECTION OF DAWSON ROAD AND OLIVER CREEK ROAD, FOLLOW DAWSON / SOUTH FORK ROAD WESTERLY THROUGH THE HULL-OAKES MILL SITE FOR 0.41 MILES TO A WYE, LEAVE SOUTH FORK ROAD AND STAY RIGHT FOR 0.36 MILES TO A WYE, STAY LEFT FOR 0.53 MILES TO A WYE, STAY LEFT FOR 0.94 MILES TO A WYE, STAY LEFT FOR 0.32 MILES TO A 4 WAY INTERSECTION, TURN RIGHT ONTO SOUTH FORK ROAD FOR 0.10 MILES TO A 4 WAY INTERSECTION, STAY STRAIGHT FOR 0.31 MILES TO A WYE, STAY LEFT FOR 0.99 MILES TO A WYE WITH BLM ROAD 14-6-17, STAY LEFT ON SOUTH FORK ROAD FOR 0.16 MILES TO A WYE WITH BLM ROAD 14-6-19, TURN LEFT ONTO BLM ROAD 14-6-19 AND FOLLOW FOR ABOUT 0.38 MILES TO A WINDFALL BLOCKING THE ROAD AND PARK. CONTINUE TO FOLLOW ROAD (WHICH IS BEGINNING TO BE OVERGROWN AND BLOCKED BY NUMEROUS WIND FALLEN TREES) FOR 0.48 MILES TO CURVE IN ROAD CROSSING A PIPED CREEK. WALK DOWN FILL SLOPE NORTHWEST ABOUT 40 FEET TO CORNER. CORNER IS BAD FOR PREMARKING AND GPS CONTROL.

MONUMENTS AND ACCESSORIES FOUND (CONDITION AND SOURCE):

1. FOUND 5/8" IRON ROD WITH YELLOW PLASTIC CAP (CAP BEAT DOWN OVER IRON ROD AND UNREADABLE), FIRMLY SET AND UNDISTURBED, UP 2" ABOVE GROUND SURFACE, FOR THE CORNER.
(SET POST PER RECORD [01]).
(SET A 6" X 12" X 24" STONE WITH A 1/2" PIPE OVER, AT THE SOUTH EDGE OF A CREEK PER RECORD [02]).
(SET A 6" X 12" X 24" STONE, AT THE SOUTH EDGE OF A CREEK, WITH A 1/2" PIPE DRIVEN AT AN ANGLE, TOP CORRECT, PER RECORD [03]).
(6" X 12" X 24" STONE PER RECORD [05]).
(FOUND 5/8" ROD BENT OVER ROCK ON CREEK BANK PER RECORD [06]).
(NO STONE FOUND. ROAD IS BEING CONSTRUCTED OVER CORNER POINT PER RECORD [08]).
(SET A 5/8" X 30" IRON ROD WITH A PLASTIC CAP MARKED "LS1084" PER RECORD [10]).
(FOUND A 5/8" X 30" IRON ROD WITH A PLASTIC CAP MARKED "LS1084" PER RECORD [11]).
2. FOUND D. FIR 17" DIA WITH HEALED FACE BEARS N51°00'W, 89.35 FEET TO CENTER. **BASIS OF BEARINGS FOR THIS RESTORATION.** SET ALUMINUM NAIL AND PLASTIC WASHER IN SOUTHWESTERLY BASE FOR DISTANCE MEASUREMENT.
(FIR 14" DIA BEARS N51°W, 89.4 FEET, MARKED "1/4S24BT" PER RECORD [10]).
(FIR 16" DIA BEARS N51°W, 89.4 FEET, WITH A HEALED FACE PER RECORD [11]).
3. FOUND HEMLOCK 13" DIA WITH PARTIALLY HEALED BLAZE AND ILLEGIBLE SCRIBING BEARS S34°55'W, 31.85 FEET TO CENTER. SET ALUMINUM NAIL AND PLASTIC WASHER IN NORTHWESTERLY BASE FOR DISTANCE MEASUREMENT.
(HEMLOCK 10" DIA BEARS S35°W, 32.0 FEET, MARKED "1/4S24BT" PER RECORD [10]).
(HEMLOCK 12" DIA BEARS S35°W, 32.0 FEET, WITH SCRIBING VISIBLE PER RECORD [11]).
4. FOUND D. FIR 15" DIA WITH HEALED FACE BEARS S48°13'E, 29.24 FEET TO CENTER. SET ALUMINUM NAIL AND PLASTIC WASHER IN SOUTHWESTERLY BASE FOR DISTANCE MEASUREMENT.
(FIR 12" DIA BEARS S47°E, 29.0 FEET, MARKED "1/4S19BT" PER RECORD [10]).
(FIR 14" DIA BEARS S47°E, 29.0 FEET, WITH A HEALED FACE PER RECORD [11]).
5. FOUND D. FIR 24" DIA WITH HEALED FACE BEARS N82°26'E, 37.88 FEET TO CENTER, FACE DOES NOT POINT TO CORNER. SET ALUMINUM NAIL AND PLASTIC WASHER IN NORTHERLY BASE FOR DISTANCE MEASUREMENT.
(FIR 16" DIA BEARS N83°E, 37.6 FEET, MARKED "1/4S19BT" PER RECORD [10]).
(FIR 22" DIA BEARS N83°E, 37.6 FEET, WITH A HEALED FACE PER RECORD [11]).
6. FOUND ROTTEN D. FIR STUMP 42" DIA WITH NO VISIBLE MARKS BEARS N3°15'E, 76.76 FEET TO CENTER.
(MARKED A FIR STUMP 54" DIA BEARS N4°E, 77.2 FEET, SCRIBED "1/4S19BT" PER RECORD [08])
(FOUND A FIR STUMP 54" DIA BEARS N3°44'E, 77.20 FEET, NO MARKS VISIBLE PER RECORDS [10] AND [11]).
7. FOUND D. FIR STUMP 90" DIA WITH LOOSE PIECE OF ILLEGIBLE SCRIBING BEARS N43°13'W, 103.83 FEET TO CENTER.
(MARKED A FIR STUMP 100" DIA BEARS N42°W, 103.6 FEET, SCRIBED "1/4S24BT" PER RECORD [08]).
(FIR STUMP 84" DIA BEARS S42°51'W, 103.60 FEET, WITH SCRIBING VISIBLE PER RECORDS [10] AND [11]).

MONUMENT SET (PROCEDURES AND DESCRIPTION):

FOUND 5/8" IRON ROD WITH YELLOW PLASTIC CAP (CAP BEAT DOWN OVER IRON ROD AND UNREADABLE), FIRMLY SET AND UNDISTURBED, UP 2" ABOVE GROUND SURFACE, FOR THE CORNER. THE IRON ROD WAS SET IN 1999 BY JIM S. PETERSON, P. L.S., FROM THE TWO BEARING TREE STUMPS MARKED BY LEO J. MARTIN, P. L.S. IN 1962. MARTIN FOUND ONE ORIGINAL GENERAL LAND OFFICE (GLO) BEARING TREE AND TWO BEARING TREES MARKED BY W. C. GALLOWAY, C.S., IN 1939. GALLOWAY ALSO SET A STONE WITH A PIPE OVER THE STONE FROM ONE GLO BEARING TREE. MARTIN SURVEYED THE SITE DURING ROAD CONSTRUCTION AND FOUND NEITHER THE STONE NOR THE PIPE OVER THE STONE. THE CONSTRUCTION INCLUDED PIPING THE CREEK AND A LARGE FILL OVER THE THAT PIPE FOR THE ROAD. IT IS LIKELY THAT THE GALLOWAY STONE AND PIPE WERE DISTURBED DURING THE CONSTRUCTION SINCE MARTIN FOUND ALL THREE BEARING TREES NOTED BY GALLOWAY, BUT NOT THE GALLOWAY MONUMENT. THE IRON ROD SET BY PETERSON IS ACCEPTED AS THE PERPETUATION OF THE ORIGINAL CORNER.
OVER THE IRON ROD IN THE SAME HORIZONTAL POSITION SET A 2" X 31-1/2" GALVANIZED IRON PIPE WITH 3-1/4" BRASS DISK CEMENTED IN THE TOP. UP 4" ABOVE GROUND SURFACE, MARKED AS SHOWN ON PAGE 2 OF 2. SET TWO NEW IRON ROD ACCESSORIES AS SHOWN ON PAGE 2 OF 2. FOUND STEEL "T" POST 7" NORTHWEST OF BRASS DISK. SET 6 FOOT ORANGE CARSONITE "SURVEY MARKER" POST 1 FOOT NORTH OF BRASS DISK.



MONUMENT DETAIL



3-1/4" BRASS DISK

LEGEND

- SET 5/8" X 30" REBAR WITH PLASTIC CAP
- YPC YELLOW PLASTIC CAP MARKED "BENTON COUNTY SURVEYOR"
- RPC RED PLASTIC CAP MARKED "BENTON COUNTY SURVEYOR"
- (C) MEASUREMENT TO CENTER
- ◎ GOVERNMENT MONUMENT SET AS SHOWN
- V.S. VISIBLE SCRIBING
- C.S. COUNTY SURVEY
- B.T. BEARING TREE
- BEARING TREE STUMP AS NOTED
- ☼ BEARING TREE AS NOTED

NEW ACCESSORIES:

1. SET REBAR (SEE LEGEND) N15°51'27"E, 60.31 FEET AND FLUSH WITH GROUND LEVEL.
2. SET REBAR (SEE LEGEND) N67°46'28"W, 69.24 FEET AND 6 INCHES BELOW GROUND LEVEL.

NOTES:

COMPASS DECLINATION IS 16' EAST. ALL MEASURED DISTANCES AND BEARINGS ARE TO THE CENTER OF THE OBJECT, UNLESS OTHERWISE NOTED. ALL BEARING TREES ARE PAINTED AND HAVE A B.T. TAG ATTACHED, FACING THE CORNER UNLESS OTHERWISE NOTED. ALL NEW BEARING TREES HAVE A PLASTIC WASHER (STAMPED "SURVEY MARKER DO NOT REMOVE") ATTACHED BY AN ALUMINUM NAIL TO THE SIDE CENTER OF THE TREE FOR DISTANCE MEASUREMENT, UNLESS OTHERWISE NOTED.

THIS RESTORATION WAS PERFORMED AT THE DIRECTION AND APPROVAL OF
 THE BENTON COUNTY SURVEYOR *[Signature]*

REGISTERED
 PROFESSIONAL
 LAND SURVEYOR

[Signature]

OREGON
 JANUARY 12, 1999
 DAVID L. MALONE
 51523

FIRM/AGENCY: BENTON COUNTY SURVEYOR'S OFFICE
 ADDRESS: 360 S.W. AVERY AVE., CORVALLIS, OR 97333; PH. 541-766-6821
 PRESENT: DAVID L. MALONE, P.L.S. AND BERNARD ALTENBACH, SURVEY TECH.
 EQUIPMENT: NIKON NIV03.C WITH SURVEY PRO ONBOARD.

RENEWAL DATE: 12/31/18

DATE 08/14/2002TOWNSHIP 14 SOUTH, RANGE 6 WEST, WILLAMETTE MERIDIAN; SECTION 19 CORNER W 1/4
DONATION LAND CLAIM N/A CORNER**COMMON CORNER(S):**

THE EAST QUARTER CORNER OF SECTION 24 IN TOWNSHIP 14 SOUTH, RANGE 7 WEST

RECORDS (INFORMATION IN BOLD ITALICS IS COUNTY STAFFS' INTERPRETATION OF THE RECORD) BASED ON EXTENSIVE RESEARCH AND THE RECOVERY OF EVIDENCE, THIS OFFICE HAS DETERMINED THAT MOST OF THE GENERAL LAND OFFICE SURVEYS UP TO ABOUT 1890 MEASURED TO THE FACE OF BEARING TREES. THE COUNTY AND DEPUTY COUNTY SURVEYORS FROM ABOUT 1909-1949 MEASURED TO THE FACE OF RECOVERED ORIGINAL BEARING TREES, AND TO THE CENTER OF NEW BEARING TREES.

[01] ORIGINAL GENERAL LAND OFFICE SURVEY BY KIMBALL WEBSTER, D.S., APPROVED AUGUST 20, 1854. **SET A POST WITH 2 BEARING TREES, MEASURED TO THE FACE.**

[02] COUNTY SURVEY NO. 2333 (OLD NO. 157) NOTES (FIELD BOOK NO. 78, PAGE 47), BY W. C. GALLOWAY, C.S., DATED JUNE 3, 1939. **FOUND 1 BEARING TREE. SET A STONE AND PIPE WITH 2 NEW BEARING TREES.**

[03] OLD CORNER RESTORATION BOOK NO. 1, PAGE 224 BY W. C. GALLOWAY, DATED JUNE 3, 1939. **SAME INFORMATION AS RECORD [02].**

[04] CORNER RESTORATION NO. 2390. **THIS IS A TRANSCRIBED COPY OF RECORD [03] AND MAY CONTAIN ERRORS AND OMISSIONS.**

[05] COUNTY SURVEY NO. 1926 (OLD NO. 157) NOTES BY CURTIS C. HANSON, D.C.S., DATED JULY 31, 1947. **FOUND ROD BENT OVER ROCK AND 3 BEARING TREES.**

[06] COUNTY SURVEY NO. 1933 (OLD NO. 157) NOTES BY CURTIS C. HANSON, DATED AUGUST, 1947. **NO DESCRIPTION.**

[07] MAP NO. 14-6 & 7-00010 BY BENTON COUNTY, NO DATE GIVEN. **STONE WITH 3 BEARING TREES, 1 ORIGINAL.**

[08] COUNTY SURVEY NO. 3628 BY LEO MARTIN, P.L.S., DATED MAY 14, 1962. **FOUND 1 ORIGINAL BEARING TREE, AND 2 RECORD [02] BEARING TREES, BUT NO MONUMENTS. ESTABLISHED 2 NEW BEARING TREES.**

[09] COUNTY SURVEY NO. 9409 BY JIM PETERSON, P.L.S., DATED MARCH 18, 1999. **FOUND 2 BEARING TREES. SET A REBAR AND CAP WITH 4 NEW BEARING TREES.**

COMMENTS/LOCATION/ETC:

RECORD [08] DID NOT FIND ANY MONUMENTS AT/NEAR THE CORNER. THE NEW ACCESSORIES APPEAR TO BE REFERENCING A POSITION ESTABLISHED, BY MEASUREMENTS ONLY, FROM THE 3 RECOVERED BEARING TREES. LEO MARTIN DOES NOT SAY WHERE HE TOOK HIS MEASUREMENT (30.4') FROM, ON THE STANDING ORIGINAL BEARING TREE, IN THE SOUTHEAST QUADRANT. RECORD [01] TOOK THEIR MEASUREMENT (30.36' OR 46 LINKS) FROM THE FACE OF A 24" TREE. RECORD [02] MEASURED 46 LINKS FROM THE FACE OF THIS TREE AS PER ATTACHMENT "A". IF LEO MARTIN MEASURED 30.4' FROM THE CENTER OF THE TREE, THEN THE POSITION HE REFERENCED OUT MAY BE 1 FOOT TOO FAR SOUTHEAST.

RECORD [09] SETS A NEW MONUMENT AT A DISTANCE-DISTANCE INTERSECTION OF THE BEARING TREES ESTABLISHED IN RECORD [08]. THIS POSITION FALLS ON THE NORTHWEST (DOWNHILL) SIDE OF A GRAVEL LOGGING ROAD, IN A SMALL CREEK AND IN A FILL SLOPE. FROM THIS CORNER TO THE NORTH 1/16TH CORNER BETWEEN SECTIONS 19 AND 24 RECORD [09] SHOWS 1321.82', VERSUS 1321.85' FROM RECORDS [05]-[07]. FROM SAID 1/16TH TO THE NORTHWEST CORNER OF SECTION 19, RECORD [09] SHOWS 1322.13', VERSUS 1321.85' PER RECORDS [05] AND [07]. FROM THE 1/4 CORNER COMMON TO SECTION 19 AND 24, TO THE CENTER 1/4 CORNER OF SECTION 24, RECORD [09] SHOWS A DISTANCE OF 2574.47' VERSUS 2573.60' PER RECORDS [05] AND [07]. THERE **MAY** BE EVIDENCE OF EITHER OF THE TWO RECORD [02] MONUMENTS BELOW THE NEW MONUMENT.

NOTES:

THIS IS A MICROSOFT WORD 2000 DOCUMENT NAMED "46100340" CREATED FROM A BOILER PLATE DOCUMENT NAMED "HISTORY", WHICH HAS A STYLESHEET NAMED "CORNER" ATTACHED TO IT.

FIRM/AGENCY: BENTON COUNTY SURVEYOR'S OFFICE**ADDRESS:** 360 S.W. AVERY AVE. CORVALLIS OR 97333; PH. 766-6821**RESEARCH BY:** CURTIS J. LIESENFELT, P.L.S.**DATA ENTRY BY:** SAME

C.S. 336

CORNER RESTORATION BOOK NO. 1

1/4 Sec. Cor. bet. Secs. B and 9. T. 14S. R. 6W.
 Set a 1" iron rod
 Fir 70" in dia. S. 73°W. 6.72 cks.
 Chinquapin 18" N. 38½°E. 70 " stump
 Oak 12" in dia. N. 16°W. 83 " std.

C.S. 336

Corner To Secs. B, 9, 16 and 17 T. 14S. R. 6W.
 Set 1" pipe by a few post
 Fir 6" in dia. bears S. 10°W. 1.5 cks. stump
 " 16" " " S. 73½°E. 2.54 "
 Chinquapin 18" " N. 84° E. .93 "
 Fir 7" in dia. " N. 49°W. .79 " "

C.S. #157

By W.C. Galloway
 Witness
 Adrian Seifs
 W. J. Miller
 May 29, 1939

1/4 Sec. Cor. bet. Secs. 19 and 20 T. 14S. R. 6W.
 Set a 1 1/2" pipe, found a very small sandstone. RR. spike in pipe
 Fir stump 8' high 24" in dia. S. 60°E. 2.3 lks. std.
 " 40" " 12" " N. 85½°W. 2.1 " down. had blaze.
 " 48" N. 56°13'W. - 7°40'W. 3.090 = 3.0 to spike NE. center.

"

Corner To Secs. 19, 20, 29 and 30 T. 14S. R. 6W.
 Set a 2 1/2" x 27" bolt in soft swamp. Seems that orig. stone is round
 Cedar stump 60" in dia. N. 26°14'E. 749 cks. spike in top.
 " 24" " N. 34°49'W. to head of spike .39 cks. N. 37½°W. cen.
 " 36" " N. 53°20'E. + 5°45' 1.078 = head of spike S.
 " 24" " S. 49° 27'W. .665 cks.
 " 24" " S. 18° W. .49 " Orig. tree shattered
 Maple 6" " S. 72° E. .56 " std. dead.

C.S. #157

Witnesses
 Adrian Seifs
 Francis Hicok
 June 1, 1939

1/4 sec. corner bet. Secs. 19 and 30 T. 14S. R. 6W.
 Set 1" pipe, set half way bet. section corners on line
 Dogwood 7" in dia. S. 22½°E. .485 cks.
 Fir 14" in dia. " N. 39°25'E. 1.925
 " 10" " " S. 76°07'W. 4.0

As above

May 31, 1939

Corner To Secs. 19, 30, 24 and 25 Tp. 14S. Rs. 6 & 7 W.
 Set 3/4" x 24" bolt. 2 washers 12" below surface. Found part of state 12" inch
 Fir 15" in dia. (now 26") N. 14°E. 1.96 cks. std. dead.
 Mkd. " 25" " " N. 54°10'E. 913 "
 " 48" " " (NW 70') S. 64°40'E. 2.95" " mths. almost invisible
 " 48" " " S. 38°15'E. 1.267 cks. line on bark for measure
 " 5" " " S. 38°15'E. .517 " measure to cen.
 " 24" " (now 60") S. 61°30'W. 1.69 " std.
 " 18" " (now 36") N. 25½°W. 1.17 " wind fall

C.S. #157

W.C. G. Hicok
 Adrian H. Seifs
 June 3, 1939

1/4 Sec. Corner between Secs. 19 & 24 T. 14S. Rs. 6 & 7 W.
 Set a Stone 6" x 12" x 24" in S. edge of creek 2" pipe driven 1. Top correct
 Cedar 24" S. 63½°E. .46 cks. std. Maple gone
 " 9" N. 19½°E. .465 "
 Hemlock 7" N. 58°40'W. .373 " to cen. of verticle body



$\frac{1}{4}$ -Section corner between sections 19 and 24, Twp. 14 S., R. 6 and **2380**

Reestablishment by W. C. Galloway

June 3, 1939

Set a stone 6" x 12" x 24" in S. edge of creek $\frac{1}{2}$ " pipe driven

Cedar 24" in diam bears S $63\frac{1}{8}^{\circ}$ E .46 chains

Cedar 9" in diam bears N $19\frac{1}{8}^{\circ}$ E .465 chains

Hemlock 7" in diam bears N 58° 40' W .373 chains

Witnesses F. L. Hicok and Adrian H. Seits

Stone gone

Trees as above will be removed by construction

From existing trees set

Fir stump 100" N 42° W 103.6' Mk'd. $\frac{1}{4}$ S 24 BT

Fir stump 54" N 4° E 77.2' Mk'd. $\frac{1}{4}$ S 19 BT

Set by Leo Martin LS 363 (BLM)