

CORNER FILE TRACKING

H:\Survey\Corners\Misc\Filetrac.doc

11/23/98

CORNER NUMBER
146100540

STEP	HISTORY()	RESTORATION()
Form Prepared, DB	3/29/04	8/3/04
Field Inspection, DB	8/3/04	8/3/04
Form Checked, DB	11/15/05	11/15/05
Form Edited, DB	12/1/05	12/1/05
Form Signed, DB	1/9/06	1/9/06
Counter Index	1/10/06	1/10/06
GIS Index	1/10/06	1/10/06
Authorize Payment, DB	—	1/10/06
Archive Digital Files	1/10/06	—
Collect Documents	1/10/06	1/10/06
Scanned	1/11/06	1/11/06
Copy For Filming	1/10/06	1/10/06
Filed, DB		
Finish index (count unit)	11/15/05	11/15/05
Filmed (Archived), DB		

(DB) = Entry needed in database (Access).

COMMENTS:

C.S. #157

C.C. Hanson
A.L. Berger
L.A. Wells
D.R. Wells

7-1-18

Corner to Secs 6 & 7, Twp 14 S, R. 6 W. & 1 & 12 Twp. 14 S, R. 7 W.

 $\frac{7}{16}$ " Pin in old stake hole

Fir 56" S. 80° W. 115 Std.

" 60" S. 65° E. 113 Std (Rotten stump - Scribing visible)

" 20" N. 47° 30' W. 536 "

" 8" N. 47° 40' E. 161 "

" 8" S. 36° 22' E. 235 "

✓ Corner to Secs 7 & 18 Twp. 14 S, R. 6 W., & 12 & 13 Twp. 14 S, R. 7 W.

 $\frac{3}{4}$ " Pin

Fir 36" N. 60° W. 03 Std

" 8" S. 33½° E. 63 "

Cedar 15" N. 71½° E. 80 "

" 12" S. 39½° W. 71 "

✓ $\frac{1}{4}$ Sec. Cor between Secs 7 & 12 Twp. 14 S, R. 6 & 7 W. $\frac{7}{8}$ " Pin set by chain tie, Bearings do not agree

Fir 18" S. 29° W. 99 Std.

" 12" S. 49° E. 93 "

✓ $\frac{1}{4}$ Sec. Cor between Secs 1 & 12, Twp. 14 S, R. 7 W.

Stone, "4" on top, "4" on N. face, "C S" on S. face.

Dead fir 36" N. 58° E. 36 Std.

Fir 36" S. 83½° E. 181 "

✓ $\frac{1}{4}$ Sec. Cor between Secs 12 & 13, Twp. 14 S, R. 7 W. $\frac{1}{2}$ " Pin

Fir 36" N. 64° E. 21 Std

Maple 5" S. 8° W. 31 "

C.S. # 170

of Amud
of 17 pp. by Otto H.
Meyer

50 chs.

C.S. # 170

Cl. 39
R. 5 W. Otto H. Meyer

Southwest corner of Geo Lenderkin Cl. #58 T11S, R6W.

Set $\frac{3}{4}$ " pipe from original position of trees, both down

Fir 30" S 50° E 37 ft.

Fir 24" N 80° W 38 ft.

Section Corner common to secs. 4, 5, 8, & 9 in T11S, 6 W.

Set a $\frac{1}{2}$ " pipe from which the S.W. corner of Cl. #58
bears S 89° 34' W 100.52 ft. and a $\frac{3}{4}$ " pipe bears
N 59° 34' E 97.27 ft. No trees.

C.S. # 170

S, R. 7 W. Otto H. Meyer

N.W. corner of H. S. Hallock Cl. #59 T11S, R6W

Set $\frac{1}{4}$ " p in old fence corner.

Fir 30" S 65° E 73.92 ft. Stump

" 18" N 24½° E 57.0 ft.

Oak 5" S 11½° W 7.9 ft. Nail in west side

Fence corner N 80° W 18.4 ft.

~~14-6~~ 7
1/4-Section corner between sections 7 and 12, Twp. 14 S., Rs. 6 and 2528

Reestablishment by W. C. Galloway

July 1, 1948

7/8" pin set by chain tie, bearings do not agree

Fir 18" in diam bears S 29° W

.94 chains

Fir 12" in diam bears S 49° E

.93 chains

Witnesses C. C. Hanson, M. L. Beyerlein, L. A. Wells, and D. A. Wells

DATE 03/29/2004TOWNSHIP 14 SOUTH, RANGE 6 WEST, WILLAMETTE MERIDIAN; SECTION 7 CORNER W 1/4
DONATION LAND CLAIM NONE CORNER NONE**COMMON CORNER(S):**

E 1/4 SECTION 12 T14S, R7W

RECORDS (INFORMATION IN BOLD ITALICS IS COUNTY STAFFS' INTERPRETATION OF THE RECORD)

BASED ON EXTENSIVE RESEARCH AND RECOVERY OF EVIDENCE, THIS OFFICE HAS DETERMINED THAT MOST GENERAL LAND OFFICE SURVEYORS MEASURED TO THE FACE OF BEARING TREES.

- [01] GENERAL LAND OFFICE (GLO) NOTES BY KIMBALL WEBSTER, D.S., DATED OCTOBER 13, 1853. *SET QR SEC POST FROM WHICH A FIR 18" DIA BEARS S29°W, 94 LKS (62.04 FEET); A FIR 12" DIA BEARS S49°E, 93 LKS (61.38 FEET).*
- [02] COUNTY SURVEY NO. 2032 BY CURTIS HANSON, D.C.S., DATED JULY 23, 1948. *7/8" PIN CHAIN TIE FROM TREES. FIR 18" (GLO BT), S29°W, .94 CHS (62.04 FEET); FIR 12" (GLO BT), S49°E, .93 CHS (61.38 FEET).*
- [03] BENTON COUNTY CORNER RESTORATION BOOK NO. 1, PAGE 247 BY CURTIS HANSON, D.C.S., NO DATE GIVEN. *7/8" PIN SET BY CHAIN TIE, BEARINGS DO NOT AGREE. FIR 18" (GLO BT) S29°W, .94 CHS (62.04 FEET), STANDING; FIR 12" (GLO BT) S49°E, .93 CHS (61.38 FEET), STANDING.*
- [04] COUNTY SURVEY NO. 9698 BY B.L.M. CREW OF N. WOOD & R. SMITH, DATED SUMMER OF 1972. *CORNER TIED BUT NOT DESCRIBED.*
- [05] COUNTY SURVEY NO. 9913 BY JIM PETERSON, P.L.S., DATED APRIL 22, 2002. *FOUND 7/8" IRON ROD AS PER C.S. 2032. BT'S FOUND: 36" FIR STUMP (GLO BT) (S29°W, 94 LKS) HEALED FACE; 36" FIR (GLO BT) (S49°E, 93 LKS) HEALED FACE; 18" FIR (S40°E, 3.6 FEET) HEALED FACE; 18" FIR (N65°W, 9.6 FEET) HEALED FACE*

NOTES:

THIS IS A MICROSOFT WORD 2000 DOCUMENT NAMED "146100540" CREATED FROM A BOILER PLATE DOCUMENT NAMED "HISTORY", WHICH HAS A STYLESHEET NAMED "CORNER" ATTACHED TO IT.

FIRM AGENCY: BENTON COUNTY SURVEYOR'S OFFICE
ADDRESS: 380 S.W. AVERY AVE. CORVALLIS OR 97333; PH. 766-6821
RESEARCH BY: DAVID M. DEAN, P.L.S.
DATA ENTRY BY: DEAN

BENTON COUNTY CORNER RESTORATION FORM, PAGE 1 OF 2
SEE CORNER HISTORY FORM FOR RECORDS, ETC.

CORNER RESTORATION FIELD BOOK NO. _____ PAGE _____ DATE 8-3-2004
 TOWNSHIP 14 SOUTH, RANGE 6 WEST, W.M. SECTION 7 CORNER W1/4
 DONATION LAND CLAIM _____ CORNER _____
 CONDITION REPORT _____ REFERENCED OUT _____ RENEWED XX SURVEYED IN _____

LOCATION AND COMMENTS:

FROM THE INTERSECTION OF BLM ROADS 14-6-18 AND 14-7-12 FOLLOW 14-7-12 AND STAY RIGHT FOR 0.85 MILES TO END OF TRAVELLED ROADWAY. CORNER LIES ON STEEP WEST SLOPE, S60°E, 300' FROM END OF GRAVEL ROAD.

MONUMENTS AND ACCESSORIES FOUND (CONDITION AND SOURCE):

- FOUND: 7/8" X 36" IRON ROD IN MOUND OF STONE FOR THE CORNER
 (7/8" PIN PER RECORDS [02] AND [03])
 (7/8" IRON ROD PER RECORD [05])
- FOUND: 36" D. FIR STUMP, WITH HEALED FACE, S26°26'W, 61.79' TO SPIKE AND BRASS WASHER SET IN CENTER OF TOP OF STUMP.
 (18" FIR, S29°W, 94 LKS. PER RECORD [01])
 (18" FIR, S29°W, .94 CHS. STANDING PER RECORDS [02] AND [03])
 (36" FIR STUMP, S29°W, 94 LKS. PER RECORD [05])
- FOUND: 36" D. FIR, WITH HEALED FACE, S50°05'E (TO CENTER OF TREE), 61.56' TO NAIL AND PLASTIC WASHER SET IN SIDE CENTER.
 (12" FIR, S49°E, 93 LKS. PER RECORD [01])
 (12" FIR, S49°E, .93 CHS. STANDING PER RECORDS [02] AND [03])
 (36" FIR, S49°E, 93 LKS. PER RECORD [05])
- FOUND: 18" D. FIR, N61°48'W (TO CENTER OF TREE), 9.24' TO NAIL AND PLASTIC WASHER SET IN FACE. THIS TREE HAD BLM TAG FROM 1972 WITH INITIALS NBW/RVS WHICH MATCHES C.S. 9698 (RECORD [04]). TREE HAD HEALED BLAZE - WE REMARKED: "1/4 S12 BT"
 (N65°W, 9.6' PER 1972 BLM BT TAG)
 (18" FIR, N65°W, 9.6' PER RECORD [05])
- FOUND: 18" D. FIR, S42°27'E (TO CENTER OF TREE), 3.15' TO NAIL AND PLASTIC WASHER SET IN FACE. THIS TREE HAD BLM TAG FROM 1972 WITH INITIALS NBW/RVS WHICH MATCHES C.S. 9698 (RECORD [04]). TREE HAD HEALED BLAZE - WE REMARKED: "1/4 S7 BT"
 (S40°E, 3.6' PER 1972 BLM BT TAG)
 (18" FIR, S40°E, 3.6' PER RECORD [05])

MONUMENT SET (PROCEDURES AND DESCRIPTION):

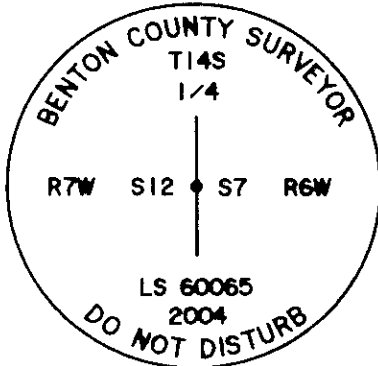
REFERENCED AND REPLACED FOUND 7/8" IRON ROD WITH 2" INSIDE DIAMETER X 30" LONG GALVANIZED IRON PIPE (WITH BREAK-AWAY BASE), WITH 3 1/4" BRASS CAP, STAMPED AS SHOWN, FLUSH WITH MOUND OF STONES. LAID FOUND ROD ALONGSIDE CAP.

BENTON COUNTY CORNER RESTORATION FORM PAGE 2 OF 2
SEE CORNER HISTORY FORM FOR RECORDS, ETC.

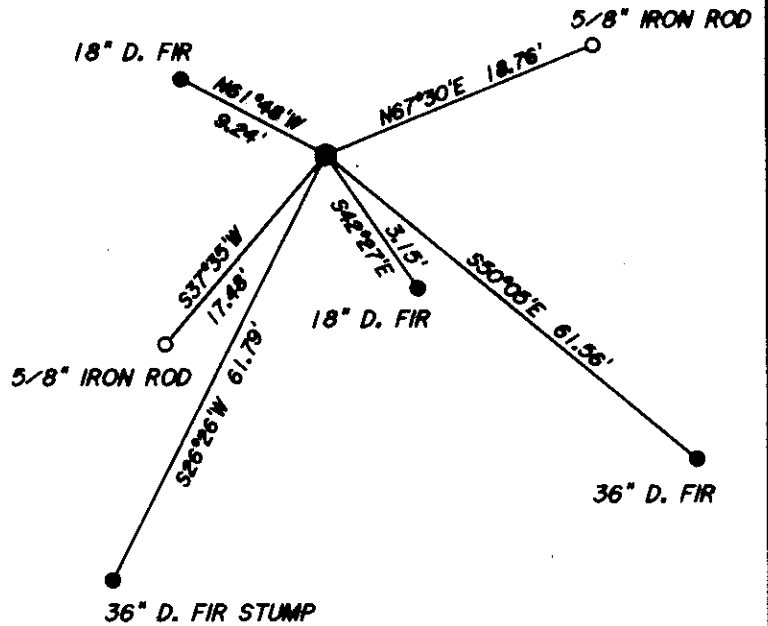
CORNER RESTORATION FIELD BOOK NO. PAGE DATE 8-3-2004
TOWNSHIP 14 SOUTH, RANGE 6 WEST, W.M. SECTION 7 CORNER W1/4
DONATION LAND CLAIM CORNER
CONDITION REPORT REFERENCED OUT RENEWED XX SURVEYED IN

NOT TO SCALE

MONUMENT DETAIL



3 1/4" ALUM. CAP



NEW ACCESSORIES:

- SET: 5/8" X 30" IRON ROD WITH 1 1/4" ORANGE PLASTIC CAP (LS 60065), S37°35'W, 17.48' (6" BELOW SURFACE)
- SET: 5/8" X 30" IRON ROD WITH 1 1/4" ORANGE PLASTIC CAP (LS 60065), N67°30'E, 18.76' (6" BELOW SURFACE)
- SET: ORANGE FIBERGLASS "SURVEY MARKER" POST 2 1/2 FEET NORTHERLY FROM CAP.

NOTES:

BASIS OF BEARINGS IS C.S. 9913. ALL MEASURED BEARINGS AND DISTANCES ARE TO THE CENTER OF THE OBJECT, UNLESS OTHERWISE NOTED. ALL BEARING TREES ARE PAINTED AND HAVE A BT TAG ATTACHED. ALL NEW BEARING TREES HAVE A PLASTIC WASHER (STAMPED "BENTON COUNTY SURVEYOR CORNER RESTORATION") ATTACHED (BY ALUMINUM NAIL) TO THE FACE, BELOW THE "BT" FOR DISTANCE AND ANGLE MEASUREMENT UNLESS OTHERWISE NOTED.

THIS RESTORATION WAS DONE UNDER CONTRACT WITH BENTON COUNTY.

FIRM/AGENCY:

PETERSON & ASSOCIATES

ADDRESS:

8155 NW MITCHEL DR - CORVALLIS, OR

SURVEYOR:

BRIAN M. PETERSON PH. 757-1794

SURVEY CREW:

JIM PETERSON

REGISTERED
PROFESSIONAL
LAND SURVEYOR

[Signature]
OREGON
JULY 15, 2003
BRIAN M. PETERSON
60065
RENEWAL: 12-31-04