

**146300500**

C.S. 336

1/4 sec. cor. bet. secs. 8 and 9. T. 145. R. 6 W.  
Set a 1" iron rod  
Fir 70" in dia. S. 73° W. .672 chs.  
Chinquapin 18" N. 38 1/2° E. .70 " stump  
Oak 12" in dia. N. 16° W. .83 " std.

C.S. 336

Corner to Secs. 8, 9, 16 and 17 T. 145. R. 6 W.  
Set 1" pipe by a few post  
Fir 6" in dia. bears S. 10° W. .15 chs. stump  
" 16" " " " S. 73 1/2° E. 2.54 " "  
Chinquapin 18" " " " N. 84° E .93 "  
Fir 7" in dia. " " N. 49° W. .49 " "

C.S. #157

By W.C. Galloway  
Witnesses  
Adrian Seits  
W. J. Miller  
May 29, 1939

1/4 Sec. Cor. bet. Secs. 19 and 20 T. 145. R. 6 W.  
Set a 1" x 20" pipe, found a very small sandstone R.R. spike in pipe  
Fir stump 8' high 24" in dia. S. 60° E 2.3 lts. std.  
" " 8" " 12" " " N. 83 1/2° W. 21 " down had blaze.  
" 48" N. 56° 13' W. - 7° 40' W. 3.090 = 3.0 to spike N.E. center.

Corner to Secs. 19, 20, 29 and 30 T. 145. R. 6 W.  
Set a 3/4" x 27" bolt in soft swamp. Seems that orig. stone is covered  
Cedar stump 60" in dia. N. 26° 14' E. 749 chs. spike in top.  
" " 24" " " N. 34° 49' W. to head of spike .39 chs. N. 37 1/2° W. cen.  
" " 36" " " N. 52° 28' E. + 5° 45' 1.078 = head of spike S.  
" " 24" " " S. 49° 27' W. .665 chs.  
" " 24" " " S. 48° W. .49 " orig. tree shattered  
Maple 6" " " S. 72° E. .56 " std. dead.

C.S. #157

Witnesses  
Adrian Seits  
Francis Hicok  
June 1, 1939

1/4 sec. corner bet. secs. 19 and 30 T. 145. R. 6 W.  
Set 1" pipe, set half way bet. section corners on line  
Dog wood 7" in dia. S. 22 1/2° E. .485 chs.  
Fir 14" in dia. " " N. 39° 23' E. 1.925  
" 10" " " " S. 76° 07' W. 1.0

As above  
May 31, 1939

Corner to Secs. 19, 30, 24 and 25 Tp. 145. Rs. 6 & 7 W.  
Set 3/4" x 24" bolt, 2 washers 12" below surface. Found part of stake 12" under  
Fir 15" in dia. (now 36") N. 14° E. 1.96 chs. std. dead.  
Mkd. " 25" " " N. 54° 10' E. .913 "  
" 48" " " (now 70") S. 64° 40' E. 2.95 " " mtr. almost invisible  
" 48" " " S. 38° 15' E. 1.267 chs. line on bark for measure  
" 5" " " S. 38° 15' E. .517 " measure to cen.  
" 24" " " (now 60") S. 61° 30' W. 1.69 " std.  
" 18" " " (now 36") N. 23 1/2° W. 1.17 " wind fall

C.S. #157  
W.C.G.  
F.L. Hicok  
Adrian H. Seits  
June 3, 1939

1/4 Sec. Corner between Secs. 19 & 24 T. 145. Rs. 6 & 7 W.  
Set a Stone 6" x 12" x 24" in S. edge of creek 1/2" pipe driven 1'. Top correct  
Cedar 24" S. 63 1/2° E. .46 chs. std. Maple gone  
" 9" N. 19 1/2° E. .465 "  
Hemlock 7" N. 58° 40' W. .373 " to cen. of verticle body

Corner to sections 8, 9, 16 and 17, Twp. 14 S., R. 6 W.

2364

Reestablishment by W. C. Galloway

1935

Set 1" pipe by a Yew post

Fir 6" in diam bears S 10° W

.15 chains

Fir 16" in diam bears S 73½° E

2.54 chains

Chinquapin 18" in diam bears N 84° E

.93 chains

Fir 7" in diam bears N 49° W

.49 chains

2369

CORNER TO SECTIONS 8, 9, 16, AND 17, T 14 S, R 6 W, W. M.

REESTABLISHMENT BY R. WILSON HUTCHISON, P. E. 3/19/1971

SEE REESTABLISHMENT NOTES BY W. C. GALLOWAY 1935

FOUND FIR STUMP S 73° 30' E 2.54 CHS, 167.64'

FOUND FIR STUMP N 49° 00' W .49 CHS, 32.34'

SET 1" X 5' IRON ROD WITH 2" X 7' CAPPED IRON PIPE TO THE NORTH

FIR 24" S 5° 00' E 29.8'

FIR 10" S 33° 00' W 71.6'

FIR 12" S 84° 00' W 49.2'

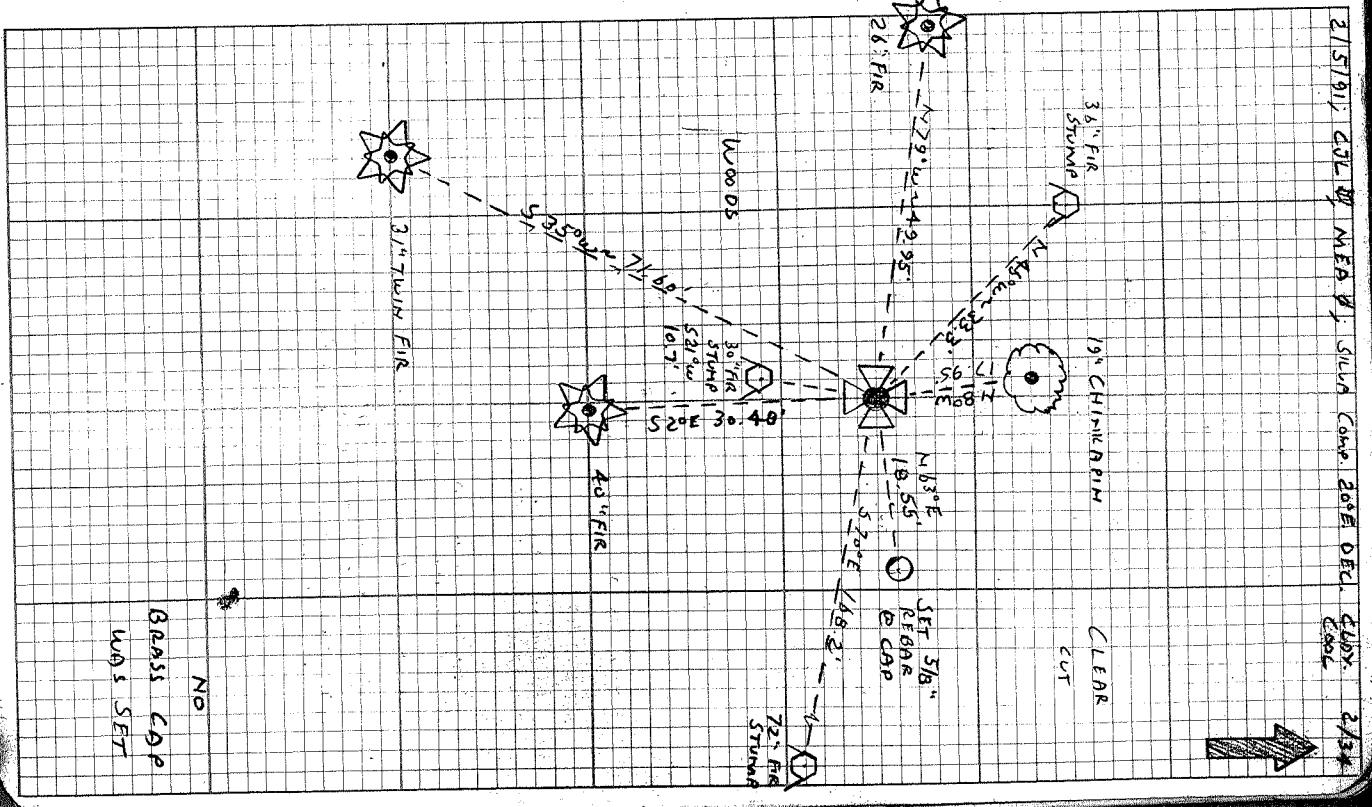
FIR 7" N 43° 00' E 46.0'

WITNESSES: BILL ROBINSON, DON WAGNER



2/14/91 28 JULY 8 SE COR  
 FIND: 1/8" REBAR 8 DIGS FOR THE COR COR REST NO. 23692. FIND A YELLOW 2 1/2" LP 3 7/8" HIGH LOCATED 02.5X. 022 N W. FIND 1" DIA 1/8" 3 3/8" HIGH LOCATED 02.5X. ABOUT 22" IN DIA.  
 A MOSTLY ROTTED FIRE STUMP ABOUT PART OF A FACE A SCARID  
 T. BIRD SOME 1-1/2" 1-1/2" SCARID VISIBLE REBAR 5 70" E  
 1/8" 2" (S 33° 30' E 183.6) 4 1/2" (S 40° 30' E 187.5) SET A  
 BT TDS ON THE TOP.  
 A MOSTLY ROTTED FIRE STUMP ABOUT 30" IN DIA. @ 1/4" AL  
 OPEN FACE OF THE SCARID 6" RBW THAS 517" VISIBLE  
 REBAR 5 21" W 10.7 (S 110° W 2 30 02.6) 6.1  
 SCARID. AND A BT TDS ON THE N 1/2 FACE SET A NEW  
 FBI ABOVE IT.  
 A MOSTLY ROTTED FIRE STUMP 36" IN DIA @ FOOT OF A  
 FACE & THE SCARID 6" 5A" VISIBLE REBAR 45" W  
 3 3/8" TALL (N 49° W 132.3) 0.16 KILG SURVEY FIND  
 BT TALL ON THE S WY FACE SET A NEW TDS ON THE TOP.  
 A FIRE 40" IN DIA. @ A HEADED FACE REBAR 5 20" E  
 30 48" (S 50° E 291.8) FOR REBAR NO. 23692. SET A PK  
 & B.C. BLW IN THE W IN BASE FIND A BT TDS ON THE  
 N WY FACE SET A NEW TDS ABOVE IT.  
 TWIN  
 REBAR 31" IN DIA. @ A HEADED FACE REBAR 5 35" W  
 71/6" (S 33° W 127.6) COR REST NO. 23692 SET A  
 PK & B.C. BLW IN THE S WY FACE SET A BT TDS ON  
 THE N WY FACE  
 A FIRE 26" IN DIA. @ A HEADED FACE & A MOSTLY CUT  
 IN THE BASE REBAR N 79° W 149.95 (S 84° W 149.2)  
 COR REST NO. 23692 SET A PK & B.C. BLW IN THE S WY  
 BASE FIND A BT TDS ON THE E IN HALF SET A NEW  
 TDS ABOVE IT.  
 NO OTHER REBAR BEHIND OBJECTS WERE RECOVERED.  
 WILL USE THE REBAR AS RECOVERED FOR THE COR. MARK.  
 SET: 5/8" X 30" REBAR @ 1/4" DIA. IN TO BENTON COUNTY  
 SURVEYOR REBAR N 8° E 111/8.5"  
 A CHINKA PIN 1/9" IN DIA. REBAR N 80° W 179.5" FROD  
 N SCARID "TILAS REBAR 5 80" SET A PK W.G. BLW IN THE  
 E WY BASE SET A BT TDS ON THE S WY FACE  
 SET: ORANGE FIBERGLASS "SURVEY STAKE" POST 1' E 114  
 THE COR IS LOCATED AT THE SW COR OF A RECENT CLEAR  
 CUT NEAR THE TOP OF A RIDGE 200' E W 1/4 FROM A  
 GRAVEL LOADING PA. IT MAY BE ON THE PRE-ALIGNMENT  
 & GAS CONTROL.

TO B NAIL IN THE NOTCH



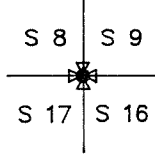
BENTON COUNTY CORNER RESTORATION FORM

3883

SECTION 8 TOWNSHIP 14 S RANGE 6 W DLC \_\_\_\_\_ CORNER SE  
DATE 2/5/91 CORNER RESTORATION FIELD BOOK NUMBER 2 PAGE 34

CORNER DESIGNATION:

THE SECTION CORNER COMMON TO SECTIONS 8, 9, 16 AND 17, IN T 14 S, R 6 W, WILLAMETTE MERIDIAN.



- \_\_\_\_\_ CONDITION REPORT ONLY
- XX REFERENCED OUT
- \_\_\_\_\_ RENEWED
- \_\_\_\_\_ SURVEYED IN

LOCATION AND COMMENTS:

THE CORNER IS LOCATED AT THE SOUTHWEST CORNER OF A RECENT CLEAR CUT, NEAR THE TOP OF A RIDGE AND APPROXIMATELY 200 FEET WESTERLY FROM A GRAVEL LOGGING ROAD.

PREVIOUS RENEWALS/SURVEYS, ETC.:

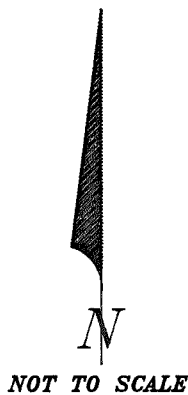
- ORIGINAL GLO SURVEY BY KIMBALL WEBSTER IN 1854.
- OLD CORNER BOOK NO. 1 PAGE 224 BY W.C. GALLOWAY IN 1935.
- CORNER RESTORATION NO. 2364 BY W.C. GALLOWAY IN 1935.
- CORNER RESTORATION NO. 2369 BY R. WILSON HUTCHINSON ON MARCH 19, 1971.

MONUMENTS AND ACCESSORIES FOUND (CONDITION AND SOURCE):

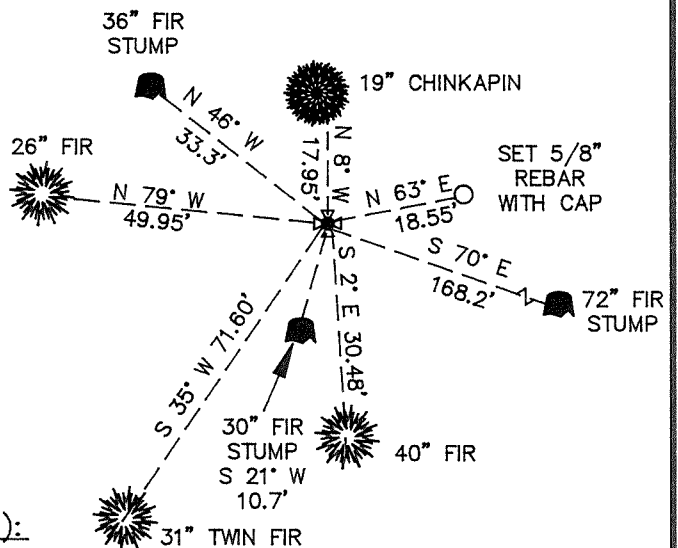
- FOUND: 1 1/8" REBAR 6" ABOVE GROUND SURFACE FOR THE CORNER (CORNER RESTORATION NO. 2369). FOUND A YELLOW 2" INSIDE DIAMETER IRON PIPE, 3.7 FEET ABOVE GROUND SURFACE, LOCATED 0.2 FOOT NORTHERLY FROM THE REBAR. FOUND A 1" INSIDE DIAMETER IRON PIPE, 3.3 FEET ABOVE GROUND SURFACE, LOCATED 0.2 FOOT SOUTHERLY FROM THE REBAR.
- FOUND: A MOSTLY ROTTED FIR STUMP 30" IN DIAMETER WITH AN OPEN FACE AND THE SCRIBING "R6W T14S S17" VISIBLE, BEARS S 21° W 10.7 FEET (S 10° W 9.90 FEET ORIGINAL GLO SURVEY). FOUND A B.T. TAG ON THE NORTHERLY FACE, SET A NEW TAG ABOVE THE FOUND TAG
- FOUND: A MOSTLY ROTTED FIR STUMP 72" IN DIAMETER WITH PART OF A FACE AND THE SCRIBING "T" AND SOME ILLEGIBLE SCRIBING VISIBLE, BEARS S 70° E 168.2 FEET (S 73° 30' E 167.64 FEET ORIGINAL GLO SURVEY). SET A B.T. TAG ON THE TOP.
- FOUND: A MOSTLY ROTTED FIR STUMP 36" IN DIAMETER WITH PART OF A FACE AND THE SCRIBING "S8" VISIBLE, BEARS N 46° W 33.3 FEET (N 49° W 32.34 FEET ORIGINAL GLO SURVEY). FOUND A B.T. TAG ON THE SOUTHEASTERLY FACE, SET A NEW TAG ON TOP.
- FOUND: A FIR 40" IN DIAMETER WITH A HEALED FACE AND A NOTCH CUT IN THE BASE, BEARS S 2° E 30.48 FEET (S 5° E 29.8 FEET CORNER RESTORATION NO. 2369). SET A PK NAIL AND B.C.B.W. IN THE NORTHERLY BASE. FOUND A B.T. TAG ON THE NORTHERLY FACE, SET A NEW TAG ABOVE THE FOUND TAG.
- FOUND: A TWIN FIR 31" IN DIAMETER WITH A HEALED FACE, BEARS S 35° W 71.60 FEET (S 33° W 71.6 FEET CORNER RESTORATION NO. 2369). SET A PK NAIL AND B.C.B.W. IN THE SOUTHEASTERLY BASE, SET A NEW B.T. TAG ON THE NORTHEASTERLY FACE.
- FOUND: A FIR 26" IN DIAMETER WITH A HEALED FACE AND A NOTCH CUT IN THE BASE, BEARS N 79° W 49.95 FEET (S 84° W 49.2 FEET TO A PK NAIL IN THE NOTCH CORNER RESTORATION NO. 2369). SET A PK NAIL AND B.C.B.W. IN THE SOUTHERLY BASE. FOUND A B.T. TAG ON THE EASTERLY FACE, SET A NEW TAG ABOVE THE FOUND TAG.

NO OTHER RECORD BEARING OBJECTS WERE RECOVERED.

MONUMENT DETAIL



SKETCH



MONUMENT SET (PROCEDURES AND DESCRIPTION):

THE 1 1/8" REBAR AS RECOVERED WILL BE HELD FOR THE CORNER MONUMENT.

NEW ACCESSORIES:

- SET: 5/8" X 30" REBAR WITH A YELLOW PLASTIC CAP MARKED "BENTON COUNTY SURVEYOR" BEARS N 63° E 18.55 FT. A CHINKAPIN 19" IN DIAMETER BEARS N 8° W 17.95 FEET FACED AND SCRIBED "T14S R6W S8 BT". SET A PK NAIL AND B.C.B.W. IN THE EASTERLY BASE. SET A B.T. TAG ON THE SOUTHERLY FACE.
- SET: ORANGE FIBERGLASS "SURVEY STAKE" POST 1 FOOT EASTERLY.

NOTES:

- B.C.B.W. IS A BRASS WASHER STAMPED "BENTON COUNTY SURVEYOR". COMPASS DECLINATION IS 20° EAST. ALL MEASURED DISTANCES AND COMPASS BEARINGS ARE TO THE CENTER OF THE OBJECT, UNLESS OTHERWISE NOTED.
- THIS RESTORATION WAS PERFORMED AT THE DIRECTION AND APPROVAL OF THE BENTON COUNTY SURVEYOR. *[Signature]*

FIRM/AGENCY: BENTON COUNTY SURVEYOR  
 ADDRESS: 360 S.W. AVERY AVE. CORVALLIS OR. 97333; PH. 757-6821  
 SURVEY CREW: CURTIS J. LIESENFELT & MARK E. ANDERSON  
 WITNESS:

REGISTERED PROFESSIONAL LAND SURVEYOR

*Curtis J. Liesenfelt*  
OREGON  
JULY 17, 1986  
CURTIS J. LIESENFELT  
2213

DATE 06/01/2007TOWNSHIP 14 SOUTH, RANGE 06 WEST, WILLAMETTE MERIDIAN; SECTION 08 CORNER SOUTHEAST  
DONATION LAND CLAIM N/A CORNER N/A**COMMON CORNER(S):**SOUTHWEST CORNER OF SECTION 9  
NORTHWEST CORNER OF SECTION 16  
NORTHEAST CORNER OF SECTION 17**RECORDS (INFORMATION IN BOLD ITALICS IS COUNTY STAFFS' INTERPRETATION OF THE RECORD)**

BASED ON EXTENSIVE RESEARCH AND RECOVERY OF EVIDENCE, THIS OFFICE HAS DETERMINED THAT MOST GENERAL LAND OFFICE SURVEYORS MEASURED TO THE FACE OF BEARING TREES.

- [01] GENERAL LAND OFFICE (GLO) NOTES BY K. WEBSTER, D.S., DATED JANUARY 30, 1854. SET A POST. MARKED AN 18" CHINQUAPIN N84°E 93 LKS. (61.38 FT.), A 16" FIR S73 1/2°E 254 LKS. (167.64 FT.), A 6" FIR S10°W 15 LKS. (9.90 FT.) AND A 7" FIR N49°W 49 LKS. (32.34 FT.).
- [02] GENERAL LAND OFFICE (GLO) NOTES BY G. MERCER, D.S., DATED JULY 5, 1883. FOUND STAKE STILL STANDING. FOUND AN 18" CHINQUAPIN (1854 GLO BT) N84°E 93 LKS. (61.38 FT.), A 16" FIR (1854 GLO BT) S73 1/2°E 254 LKS. (167.64 FT.), A 8" FIR (1854 GLO BT) S10°W 15 LKS. (9.90 FT.) AND A 7" FIR (1854 GLO BT) N49°W 49 LKS. (32.34 FT.).
- [03] CORNER RESTORATION BOOK NO. 1, PAGE 224 BY W. C. GALLOWAY, C.S., DATED 1935. SET A 1" PIPE BY A YEW POST. FOUND AN 18" CHINQUAPIN (1854 GLO BT) N84°E 0.93 CHS. (61.38 FT.), A 16" FIR STUMP (1854 GLO BT) S73 1/2°E 2.54 CHS. (167.64 FT.), A 6" FIR STUMP (1854 GLO BT) S10°W 0.15 CHS. (9.90 FT.) AND A 7" FIR STUMP (1854 GLO BT) N49°W 0.49 CHS. (32.34 FT.).
- [04] CORNER RESTORATION NO. 2364. TRANSCRIBED FROM RECORD [03] AND MAY CONTAIN ERRORS AND/OR OMISSIONS.
- [05] COUNTY SURVEY NO. 1437 (OLD NO. 336) BY W. C. GALLOWAY, C.S., DATED JULY 15, 1939. FOUND A 1 1/4" PIPE. FOUND 6"X8' FIR STUMP (1854 GLO BT) S10°W 0.15 CHS. (9.90 FT.).
- [06] BENTON COUNTY MAP NO. 14-6-00004, NO DATE OR DRAFTSMAN GIVEN. 1" PIPE BY YEW POST. 18" CHINQUAPIN (1854 GLO BT) N84°E 0.93 CHS. (61.83 FT.). 16" FIR STUMP (1853 GLO BT) S73 1/2°E 2.54 CHS. (167.64 FT.). 6" FIR STUMP (1854 GLO BT) S10°W 0.15 CHS. (9.90 FT.). 7" FIR STUMP (1854 GLO BT) N49°W 0.49 CHS. (32.34 FT.).
- [07] CORNER RESTORATION NO. 2369 BY R. WILSON HUTCHISON, P.E., DATED MARCH 19, 1971. SET A 1"X5' IRON ROD WITH A 2"X7' CAPPED IRON PIPE TO THE NORTH. FOUND A FIR STUMP (1854 GLO BT) S73°30'E 2.54 CHS. (167.64 FT.) AND A FIR STUMP (1854 GLO BT) N49°W 0.49 CHS. (32.34 FT.). MARKED A 7" FIR N43°E 46.00 FT., A 24" FIR S05°E 29.80 FT., A 10" FIR S33°W 71.60 FT. AND A 12" FIR S84°W 49.20 FT.
- [08] BENTON COUNTY CORNER RESTORATION FIELD NOTES (BOOK 2, PAGE 34) BY CURT LIESENFELT, P.L.S., DATED FEBRUARY 5, 1991. FOUND A 1 1/8" REBAR, 6" ABOVE GROUND SURFACE. FOUND A 2" I.P., 3.7' HIGH, 0.2' NORTHWEST OF THE CORNER. FOUND A 1" I.P., 3.3' HIGH, 0.2' SOUTHERLY OF THE CORNER. FOUND A 72" MOSTLY ROTTED FIR STUMP (GLO BT) S70°E 168.20 FT., WITH VISIBLE SCRIBING "T" AND SOME ILLEGIBLE SCRIBING VISIBLE, A 30" MOSTLY ROTTED FIR STUMP (GLO BT) S21°W 10.70 FT., WITH AN OPEN FACE AND SCRIBING "R6WT14SS17" VISIBLE, AND A 36" MOSTLY ROTTED FIR STUMP (GLO BT) N46°W 33.30 FT., WITH PART OF A FACE AND VISIBLE SCRIBING "S8". FOUND A 40" FIR S02°E 30.48 FT., WITH HEALED FACE, A 31" TWIN FIR S35°W 71.60 FT., WITH HEALED FACE AND A 26" FIR N79°W 49.95 FT., WITH HEALED FACE AND A NOTCH CUT IN THE BASE. SET A 5/8"X30" REBAR WITH A YELLOW PLASTIC CAP, MARKED "BENTON COUNTY SURVEYOR" N63°E 18.55 FT. MARKED A 19" CHINQUAPIN N08°W 17.95 FT., SCRIBED "T14SR6WS8BT".
- [09] BENTON COUNTY CORNER RESTORATION NO. 3883 BY C. LIESENFELT, P.L.S., DATED FEBRUARY 5, 1991. FOUND A 1 1/8" REBAR, 6" ABOVE GROUND SURFACE. FOUND A 2" I.P., 3.7' HIGH, 0.2' NORTHWEST OF THE CORNER. FOUND A 1" I.P., 3.3' HIGH, 0.2' SOUTHERLY OF THE CORNER. FOUND A 72" MOSTLY ROTTED FIR STUMP (GLO BT) S70°E 168.20 FT., WITH VISIBLE SCRIBING "T" AND SOME ILLEGIBLE SCRIBING VISIBLE, A 30" MOSTLY ROTTED FIR STUMP (GLO BT) S21°W 10.70 FT., WITH AN OPEN FACE AND SCRIBING "R6WT14SS17" VISIBLE, AND A 36" MOSTLY ROTTED FIR STUMP (GLO BT) N46°W 33.30 FT., WITH PART OF A FACE AND VISIBLE SCRIBING "S8". FOUND A 40" FIR S02°E 30.48 FT., WITH HEALED FACE, A 31" TWIN FIR S35°W 71.60 FT., WITH HEALED FACE AND A 26" FIR N79°W 49.95 FT., WITH HEALED FACE AND A NOTCH CUT IN THE BASE. SET A 5/8"X30" REBAR WITH A YELLOW PLASTIC CAP, MARKED "BENTON COUNTY SURVEYOR" N63°E 18.55 FT. MARKED A 19" CHINQUAPIN N08°W 17.95 FT., SCRIBED "T14SR6WS8BT".
- [10] COUNTY SURVEY NO. 9336 BY TED LANGTON, P.L.S., DATED AUGUST 14, 1998. FOUND 1" REBAR ON RIDGE TOP. SW BT. IS A HIGH CUT STUMP.

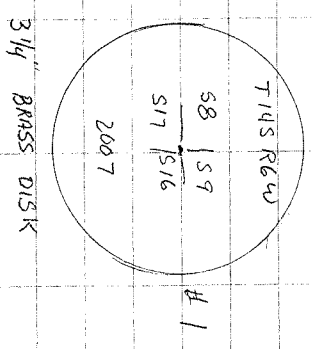
**COMMENTS/LOCATION/ETC:****NOTES:**

THIS IS A MICROSOFT WORD 2000 DOCUMENT NAMED "46300500" CREATED FROM A BOILER PLATE DOCUMENT NAMED "HISTORY", WHICH HAS A STYLESHEET NAMED "CORNER" ATTACHED TO IT.

**FIRM/AGENCY:** BENTON COUNTY SURVEYOR'S OFFICE  
**ADDRESS:** 360 S.W. AVERY AVE. CORVALLIS OR 97333; PH. 766-6821  
**RESEARCH BY:** BERNARD S. ALTENBACH, ENGINEER/SURVEY TECH.  
**DATA ENTRY BY:** SAME

146300500  
819  
RENUMERATING 77176 T145 R6W

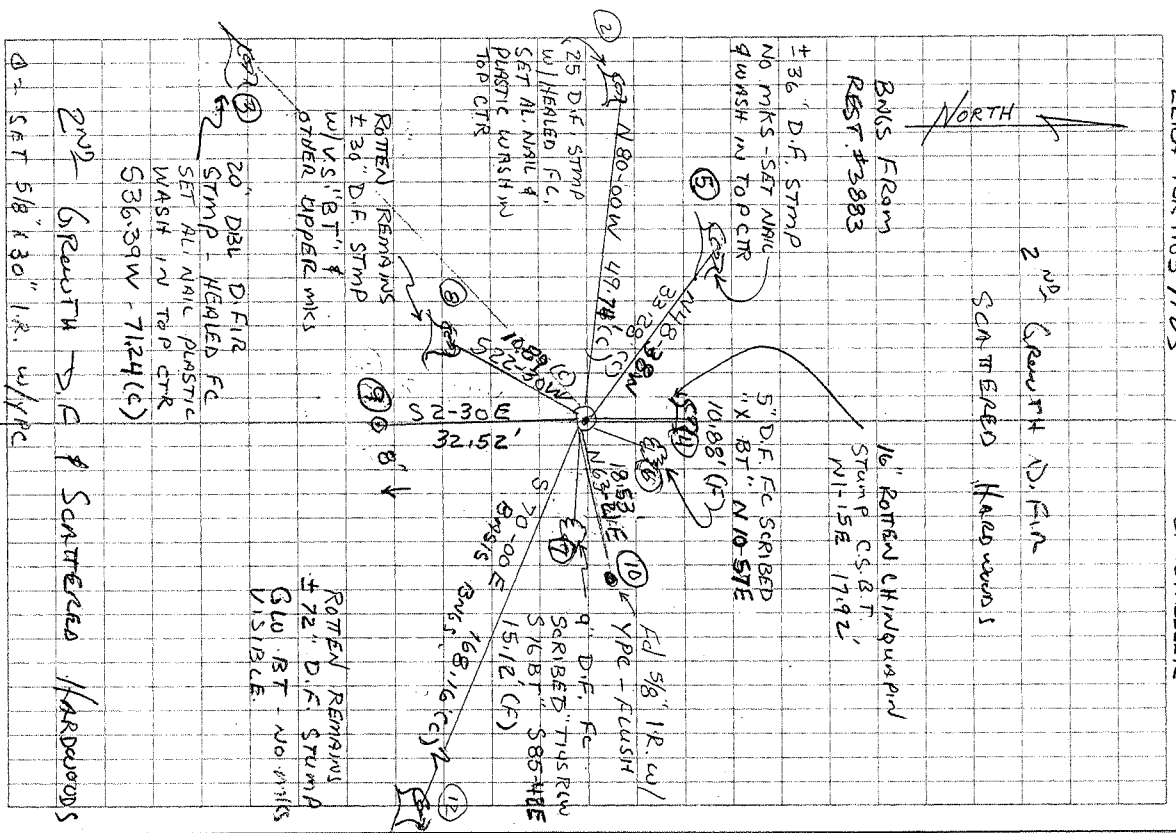
Fd 1 1/8" x 60" IRON ROD (REBAR) 3"  
ABOVE GROUND LEVEL FOR COR. POSITION  
AS SET IN PER COR. REST # 2369.  
IR. WAS UNDISTURBED & FIRMLY SET.  
FD REMAINS OF 3 GLO BT'S (STAMPS)  
W/US. Fd 2 REST: 2369 BT'S - New  
STAMPS w/ HEALED FACES. Fd REST #  
3883 BT - New ± 8" CHINAQUARD  
STAMP (ROTTEN)  
REMOVED 1 1/8" x 60" IR. AND SET 2" x 3 1/2"  
G I P w/ 3 1/4" BRASS DISK CONC. IN  
TOP, FLUSH w/ GROUND & MKD AS  
SHOWN - SET 6' ORANGE CARSONITE  
"SURVEY MARKER" POST 5' NORTH



CLEAR, WARM  
65°F, 29.7" Hg  
LEICA TR 1105 /IDS

6/18/07  
D. DEAN  
B. ALTENBACH  
C. WHEELER

25/41



20" DIA. DI. FIR  
STAMP - HEALED FC  
SET ALL NAIC PLASTIC  
WASH IN TOP CTR  
536.39W - 71.24(C)  
2ND 6 REAR TO C & SCATTERED HARDWARES  
A - SET 5/8" x 30" IR. w/ YPC

± 36" D.F. STAMP  
NO MKS - SET W/IR  
& WASH IN TOP CTR  
5" D.F. FC SCRIBED  
1" X BT. N 10.88'  
10.88' (F)  
16" ROTTEN CHINAQUARD  
STAMP C.S.G.T.  
N 11.15E 17.92'  
FD 5/8" IR. w/  
YPC - FLUSH  
9" D.F. FC  
SCRIBED TUS RW  
576 BT. 585 HTE  
15.12' (F)  
ROTTEN REMAINS  
± 36" D.F. STAMP  
w/US. BT. &  
OTHER UPPER MKS  
ROTTEN REMAINS  
± 72" D.F. STAMP  
GLO. BT - NO MKS  
VISIBLE



**BENTON COUNTY CORNER RESTORATION FORM, PAGE 1 OF 3, 146300500R3****SEE CORNER HISTORY FORM FOR RECORDS ETC.**

CORNER RESTORATION FIELD BOOK NUMBER 25 PAGE(S) 41 & 42 DATE 06/18/2007  
TOWNSHIP 14 SOUTH, RANGE 06 WEST, WILLAMETTE MERIDIAN; SECTION 08 CORNER SOUTHEAST  
DONATION LAND CLAIM N/A CORNER N/A  
CONDITION REPORT     ; REFERENCED OUT XX; RENEWED     ; SURVEYED IN     

**LOCATION AND COMMENTS:**

CORNER IS LOCATED ON A RIDGE THAT RUNS TO THE NORTHEAST, IN A STAND OF SECOND GROWTH FIR AND SCATTERED HARDWOODS. TO REACH THE CORNER FROM THE JUNCTION OF DAWSON ROAD AND OLIVER CREEK ROAD, TRAVEL WESTERLY ON DAWSON ROAD PASS THE HULL-OAKES MILL ON THE NORTH SIDE FOR 0.41 MILES; THEN RIGHT ON SOUTH FORK ROAD FOR 0.36 MILES; THEN LEFT ON SPUR ROAD FOR 0.52 MILES; THEN RIGHT ON SPUR ROAD FOR 0.18 MILES; THEN RIGHT ON SPUR ROAD FOR 0.44 MILES TO PULL OUT ON THE NORTH SIDE OF THE ROAD; THEN WALK NORTHERLY  $\pm$ 50 FEET TO CORNER. CORNER IS POOR FOR PREMARKING AND GPS CONTROL.

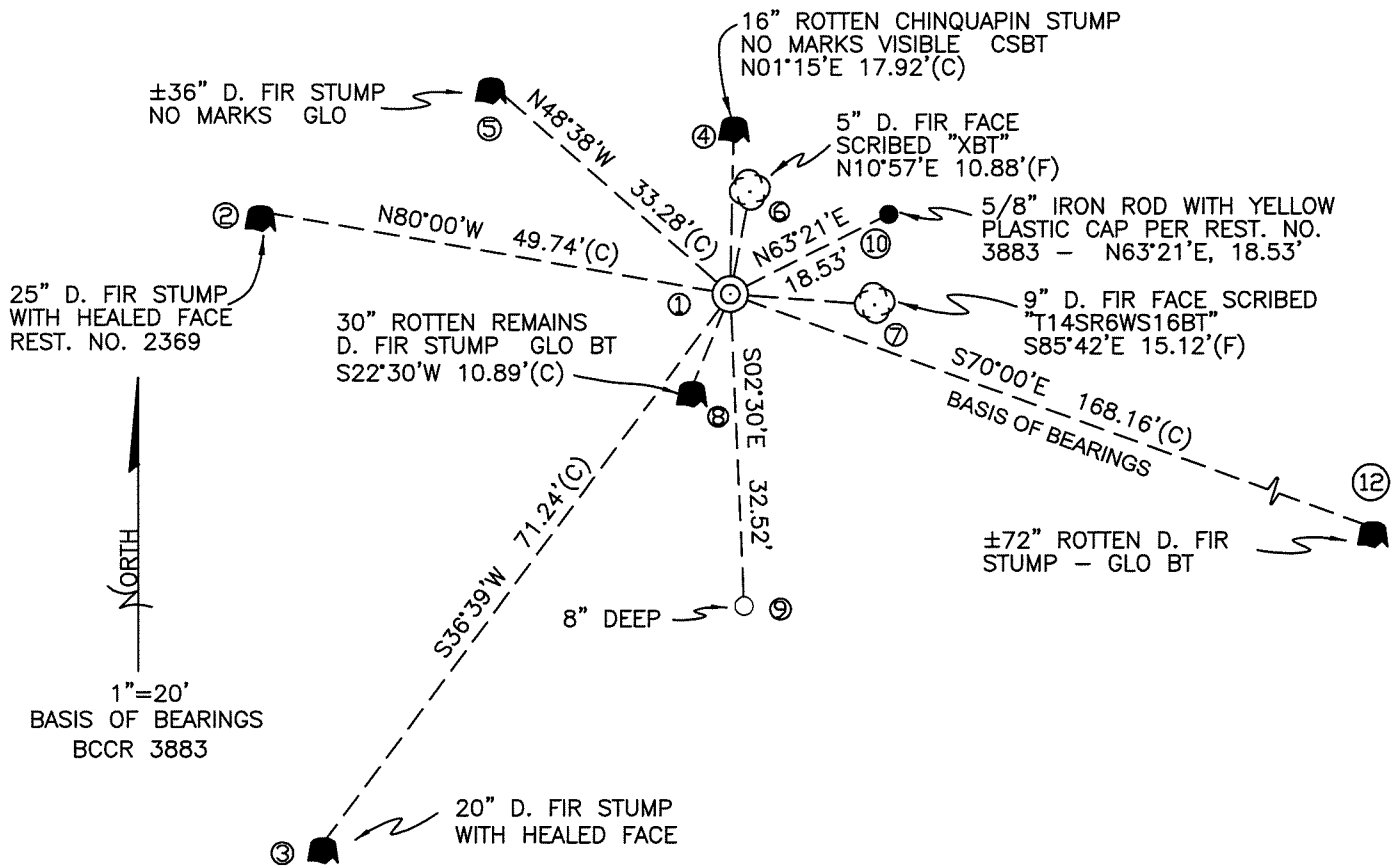
**MONUMENTS AND ACCESSORIES FOUND (CONDITION AND SOURCE):**

1. FOUND A 1 1/8" X 60" IRON ROD, 3" ABOVE GROUND LEVEL AND FIRMLY SET FOR CORNER POSITION.  
(SET A 1" X 5' IRON ROD PER RECORD [07])  
(FOUND A 1 1/8" REBAR, 6" ABOVE GROUND LEVEL PER RECORDS [08] AND [09])  
(FOUND A 1" REBAR PER RECORD [10])
2. FOUND A  $\pm$  72" ROTTEN D. FIR STUMP, S70°00'E, 168.16 FEET TO CENTER.  
(16" FIR S73 1/2°E, 167.64 FEET PER RECORD [01])  
(FOUND A 16" FIR S73 1/2°E, 167.64 FEET PER RECORD [02])  
(FOUND A 16" FIR STUMP S73 1/2°E, 167.64 FEET PER RECORD [03])  
(16" D. FIR STUMP S73 1/2°E, 167.64 FEET PER RECORD [06])  
(FOUND A FIR STUMP S73°30'E, 167.64 FEET PER RECORD [07])  
(FOUND A 72" ROTTED FIR STUMP S70°E, 168.20 FEET, WITH VISIBLE SCRIBING "T" AND SOME ILLEGIBLE SCRIBING VISIBLE PER RECORDS [08] AND [09])
3. FOUND A 30" D. FIR STUMP WITH VISIBLE SCRIBING "BT" AND OTHER UPPER MARKS ON OPEN FACE, S22°30'W, 10.89 FEET TO CENTER.  
(6" FIR S10°W, 9.90 FEET PER RECORD [01]).  
(FOUND A 6" FIR S10°W, 9.90 FEET PER RECORD [02]).  
(FOUND A 6" FIR STUMP S10°W, 9.90 FEET PER RECORD [03]).  
(FOUND A 6" X 8' FIR STUMP S10°W, 9.90 FEET PER RECORD [05]) .  
(6" FIR STUMP S10°W, 9.90 FEET PER RECORD [06]).  
(FOUND A 30" ROTTED FIR STUMP WITH AN OPEN FACE AND VISIBLE SCRIBING "R6WT14SS17", S21°W, 10.70 FEET PER RECORDS [08] AND [09]).
4. FOUND A  $\pm$  36" D. FIR STUMP, N48°38'W, 33.28 FEET TO CENTER.  
(7" FIR N49°W, 32.34 FEET PER RECORD [01]).  
(FOUND A 7" FIR N49°W, 32.34 FEET PER RECORD [02]).  
(FOUND A 7" FIR STUMP, N49°W, 32.34 FEET PER RECORD [03]).  
(7" FIR STUMP, N49°W, 32.34 FEET PER RECORD [06]).  
(FOUND A FIR STUMP, N49°W, 32.34 FEET PER RECORD [07]).  
(FOUND A 36" ROTTED FIR STUMP, WITH PART OF A FACE AND VISIBLE SCRIBING "S8", N46°W, 33.30 FEET PER RECORDS [08] AND [09]).
5. FOUND A 16" ROTTEN CHINQUAPIN STUMP, N01°15'E, 17.92 FEET TO CENTER.  
(19" CHINQUAPIN, SCRIBED "T14SR6WS8BT", N08°W, 17.95 FEET PER RECORDS [08] AND [09]).
6. FOUND A 5/8" IRON ROD WITH A YELLOW PLASTIC CAP, FLUSH WITH THE GROUND, N63°21'E, 18.53 FEET.  
(5/8" X 30" REBAR WITH YELLOW PLASTIC CAP, MARKED "BENTON COUNTY SURVEYOR", N63°E, 18.55 FEET PER RECORDS [08] AND [09]).
7. FOUND A 20" D. FIR STUMP, WITH A HEALED FACE, S36°39'W, 71.24 FEET TO CENTER. SET ALUMINUM NAIL AND PLASTIC WASHER IN TOP CENTER FOR DISTANCE AND ANGLE MEASUREMENT.  
(10" FIR S33°W, 71.60 FEET PER RECORD [07]).  
(FOUND A 31" TWIN FIR, WITH HEALED FACE, S35°W 71.60 FEET PER RECORDS [08] AND [09]).  
(SW BT IS A HIGH CUT STUMP PER RECORD [10]).
8. FOUND A 25" D. FIR STUMP, WITH HEALED FACE, N80°00'W, 49.74 FEET TO CENTER. SET ALUMINUM NAIL AND PLASTIC WASHER IN TOP CENTER FOR DISTANCE AND ANGLE MEASUREMENT.  
(7" FIR S84°W, 49.20 FEET PER RECORD [07]).  
(FOUND A 26" FIR, WITH HEALED FACE, N79°W, 49.95 FEET PER RECORDS [08] AND [09]).

**MONUMENT SET (PROCEDURES AND DESCRIPTION):**

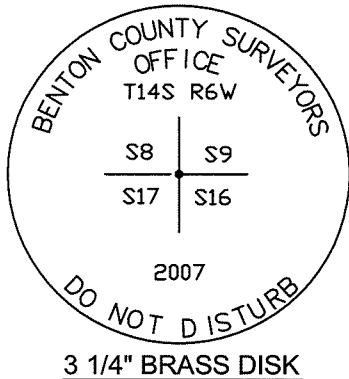
HELD THE 1 1/8" IRON ROD FOR THE CORNER POSITION, WHICH IS IN GOOD AGREEMENT WITH THE THREE FOUND GLO BEARING TREES. REMOVED THE IRON ROD AND SET A 2" X 31 1/2" GALVANIZED IRON PIPE WITH A 3 1/4" BRASS DISK CONCRETED IN THE TOP, FLUSH WITH THE GROUND, MARKED AS SHOWN ON PAGE 2 OF 2. REMOVED THE IRON ROD FROM THE AREA. SET A 6 FOOT ORANGE CARSONITE "SURVEY MARKER" POST, 0.5 FEET NORTH OF NEW MONUMENT.

**SECOND GROWTH D. FIR AND SCATTERED HARDWOODS**



**SECOND GROWTH D. FIR AND SCATTERED HARDWOODS**

MONUMENT DETAIL



LEGEND

- SET 5/8" X 30" REBAR WITH YELLOW PLASTIC CAP MKD "BENTON COUNTY SURVEYOR"
- FOUND MONUMENT AS NOTED
- (F) MEASUREMENT TO FACE
- (C) MEASUREMENT TO CENTER
- ⊙ GOVERNMENT MONUMENT SET AS SHOWN
- ⊙ BEARING TREE AS NOTED
- C.S.B.T. COUNTY SURVEYORS BEARING TREE
- GLO GENERAL LAND OFFICE
- BEARING TREE STUMP AS NOTED
- B.C.C.R. BENTON COUNTY CORNER RESTORATION

**NEW ACCESSORIES:**

1. SET REBAR (SEE LEGEND) 8" BELOW GROUND LEVEL S02°30'W, 32.52 FEET.
2. 5" D. FIR FACE SCRIBED "XBT" N10°57'E, 10.88 FEET TO FACE. SET ALUMINUM NAIL AND PLASTIC WASHER BELOW SCRIBING FOR DISTANCE AND ANGLE MEASUREMENT.
3. 9" D. FIR FACE SCRIBED "T14SR6WS16BT" S85°42'E, 15.12 FEET TO FACE. SET ALUMINUM NAIL AND PLASTIC WASHER BELOW SCRIBING FOR DISTANCE AND ANGLE MEASUREMENT.

**NOTES:**

COMPASS DECLINATION IS 20° EAST. ALL MEASURED DISTANCES AND BEARINGS ARE TO THE CENTER OF THE OBJECT, UNLESS OTHERWISE NOTED. ALL BEARING TREES ARE PAINTED AND HAVE A B.T. TAG ATTACHED, FACING THE CORNER UNLESS OTHERWISE NOTED. ALL NEW BEARING TREES HAVE A PLASTIC WASHER (STAMPED "BENTON COUNTY SURVEYOR CORNER RESTORATION") ATTACHED (BY ALUMINUM NAIL) TO THE FACE, BELOW THE "BT" FOR DISTANCE AND ANGLE MEASUREMENT UNLESS OTHERWISE NOTED. THE DRAWING IS FROM AUTOCAD RELEASE 2006.

THIS RESTORATION WAS PERFORMED AT THE DIRECTION AND APPROVAL OF THE BENTON COUNTY SURVEYOR. DM

FIRM/AGENCY: BENTON COUNTY SURVEYOR'S OFFICE  
 ADDRESS: 360 S.W. AVERY AVE. CORVALLIS OR 97333; PH. 766-6821  
 PRESENT: DAVID M. DEAN, P.L.S., BERNIE ALTENBACH, SURVEY TECH. AND CODY WHEELER, SURVEY TECH.  
 EQUIPMENT: LEICA TCR 1105 WITH TDS SOFTWARE ON BOARD

REGISTERED PROFESSIONAL LAND SURVEYOR  
 7/17/07 *David M. Dean*  
 OREGON  
 JULY 13, 1984  
 DAVID M. DEAN  
 2090  
 RENEWAL DATE: 12/31/07