

CORNER FILE TRACKING

H:\Survey\Corners\Misc\Filetrac.doc
11/23/98

CORNER NUMBER
146340400

STEP	HISTORY()	RESTORATION()
Form Prepared, DB	11/04/04	12/14/04
Field Inspection, DB	12/12/04	12/18/04
Counter Index	12/14/04	12/19/04
Form Checked, DB	12/16/04	12/16/04
Form Edited, DB	12/20/04	12/20/04
Form Signed, DB	12/17/04	12/17/04
GIS Index	12/20/04	12/20/04
Authorize Payment, DB	—————	—————
Archive Digital Files	12/20/04	12/20/04
Collect Documents	12/20/04	12/20/04
Scanned	12/21/04	12/21/04
Copy For Filming		
Filed, DB	12/20/04	12/20/04
Finish index (count unit)	12/18/04	12/18/04
Filmed (Archived), DB		

(DB) = Entry needed in database (Access).

COMMENTS:

DATE 11/04/2004TOWNSHIP 14 SOUTH, RANGE 6 WEST, WILLAMETTE MERIDIAN; SECTION 16 CORNER SOUTH 1/4
DONATION LAND CLAIM NONE CORNER N/A**COMMON CORNER(S):**

NORTH 1/4 SECTION 21

RECORDS (INFORMATION IN *BOLD ITALICS* IS COUNTY STAFFS' INTERPRETATION OF THE RECORD)

BASED ON EXTENSIVE RESEARCH AND RECOVERY OF EVIDENCE, THIS OFFICE HAS DETERMINED THAT MOST GENERAL LAND OFFICE SURVEYORS MEASURED TO THE FACE OF BEARING TREES.

- [01] GENERAL LAND OFFICE (GLO) NOTED BY KIMBEL WEBSTER, D.S., DATED JANUARY 30, 1854. *A MAPLE 20" DIAM. QR SEC COR FROM WHICH A FIR 15" DIAM BEARS N52 1/2°E, 15 LKS (9.90 FEET); A FIR 7" DIAM BEARS S52 1/2°W, 29 LKS (19.14 FEET).*
- [02] COUNTY SURVEY NO. 455 (OLD NO. 210) FIELD NOTES (FIELD BOOK NO. 17, PAGE 42) BY BURT WILKES, D.C.S., DATED JUNE 19, 1914. *REESTABLISH 1/4 SEC. COR. OLD COR. IS MAPLE TREE. NORTH SIDE IS ROTTED OUT. SET SANDSTONE 18"x8"x6" WITH "CS" ON NORTH FACE. OLD FIR 30" (16") N52 1/2°E, .156 CHS (10.30 FEET); OLD FIR 12" (7"), S52 1/2°W, .301 CHS (19.87 FEET); MARKED FIR 26", S69 1/2°W, .70 CHS (46.20 FEET).*
- [03] BENTON COUNTY CORNER RESTORATION BOOK NO.1, PAGE 80 BY BURT WILKES, D.C.S., DATED JUNE 16 – JULY 16, 1914. *ORIGINAL CORNER WAS MAPLE TREE. JUST SOUTH SHELL OF TREE REMAINS. SET STONE 18" X 8" X 6" IN CENTER OF HOLLOWED OUT ROOTS. FIR 16" (NOW 30") N52 1/2°E, 0.15 CHS (IS 0.156 CHS). FIR 7" (NOW 12") S52 1/2°W, 0.29 CHS (IS 0.301 CHS). MARKED FIR 16", S69 1/2°W, 0.70 CHS.*
- [04] BENTON COUNTY CORNER RESTORATION NO. 2379. *TRANSCRIBED FROM RECORD [03] AND MAY CONTAIN ERRORS AND/OR OMISSIONS.*
- [05] COUNTY SURVEY NO. 604 BY BURT WILKES, D.C.S., DATED SEPTEMBER 28, 1917. *1/4 SEC. COR. STONE.*
- [06] BENTON COUNTY MAP NO. 14-6-00004 BY BENTON COUNTY SURVEYOR'S OFFICE, NO DATE GIVEN. *STONE 6" X 8" X 18". FIR 30" N52 1/2°E, 0.156 CHS (10.30 FEET); FIR 12" S52 1/2°W, 0.301 CHS (19.87 FEET); FIR 16" S69 1/2°W, 0.70 CHS (46.20 FEET).*
- [07] COUNTY SURVEY NO. 9336 BY THEODORE LANGTON, P.L.S., DATED AUGUST 14, 1998. *SET N*MON AT DISTANCE-DISTANCE INTERSECTIN FROM THE FOUND BEARING TREES. 28" D. FIR STUMP PER GALLOWAY RESTORATION NO. 2379, S69°30'W, 46.20 FEET (0.70 CHS = 46.2 FEET) TO CENTER I OPEN AND FIND SCRIBING 8" NE OF CENTER. 28" D. FIR STUMP (ORIGINAL) N52°30'E, 9.90 FEET (.15 CHS = 9.9 FEET) TO FACE WITH OPEN, BURNT OUT FACE AND CRUISER MARKS.*
MARKED NEW BEARING TREES: 13" D. FIR S25°W, 18.1 FEET SCRIBED "1/4S21" ABOVE "BT"
18" D. FIR N40°E, 25.5 FEET SCRIBED "1/4S16" ABOVE "BT"
8" D. FIR N71°W, 28.4 FEET SCRIBED "1/4S16" ABOVE "BT"
21" D. FIR S89°E, 27.0 FEET SCRIBED "1/4S21" ABOVE "BT"

NOTES:

THIS IS A MICROSOFT WORD 2000 DOCUMENT NAMED "46340400" CREATED FROM A BOILER PLATE DOCUMENT NAMED "HISTORY", WHICH HAS A STYLESHEET NAMED "CORNER" ATTACHED TO IT.

FIRM/AGENCY: BENTON COUNTY SURVEYOR'S OFFICE
ADDRESS: 360 S.W. AVERY AVE. CORVALLIS OR 97333; PH. 766-6821
RESEARCH BY: DAVID M. DEAN, P.L.S.
DATA ENTRY BY: DEAN

BENTON COUNTY CORNER RESTORATION FORM, PAGE 1 OF 2, 146340400R2**SEE CORNER HISTORY FORM FOR RECORDS ETC.**CORNER RESTORATION FIELD BOOK NUMBER 22 PAGE(S) 70DATE 12/08/2004TOWNSHIP 14 SOUTH, RANGE 6 WEST, WILLAMETTE MERIDIAN; SECTION 16 CORNER S 1/4DONATION LAND CLAIM NONECORNER N/A

CONDITION REPORT _____;

REFERENCED OUT _____;

RENEWED XX _____;

SURVEYED IN _____

LOCATION AND COMMENTS:

CORNER IS LOCATED ON A GENTLE SOUTHEASTERLY FACING SLOPE IN ± 60 YEAR OLD STAND OF D. FIR TIMBER. TO REACH CORNER FROM THE JUNCTION OF HAWLEY CREEK ROAD AND GREEN PEAK ROAD, TRAVEL NORTHERLY AND WESTERLY ON GREEN PEAK ROAD FOR 2.22 MILES TO LOCATION TAG ON AN 18" D. FIR ON THE SOUTHERLY SIDE OF GREEN PEAK ROAD; THEN S10°E, 7 CHAINS TO CORNER. CORNER IS POOR FOR PREMARKING AND GPS CONTROL.

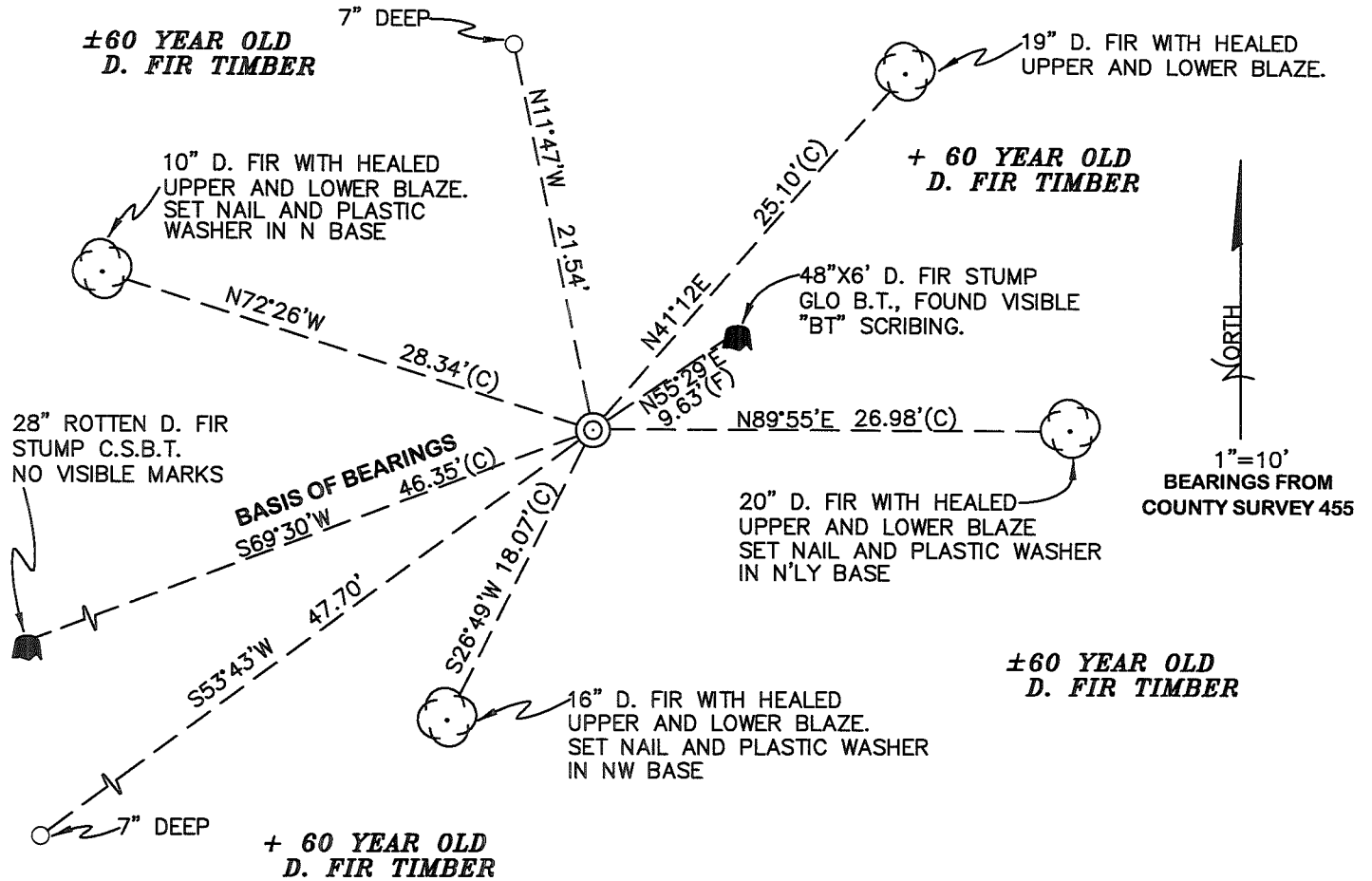
MONUMENTS AND ACCESSORIES FOUND (CONDITION AND SOURCE):

1. FOUND 5/8" IRON ROD WITH RED PLASTIC CAP, FLUSH WITH GROND LEVEL, MARKED "NORTHSTAR PLS" FOR CORNER POSITION.
(SET 5/8" X 30" IRON ROD WITH RED PLASTIC CAP MARKED "NORTHSTAR PLS" BY DISTANCE-DISTANCE INTERSECTION FROM STUMPS OFA GLO AND COUNTY SURVEYOR'S BEARING TREES PER RECORD [07]).
2. FOUND COUNTY SURVEYOR'S BEARING TREE, S69°30'W, 46.35 FEET TO CENTER, NOW ± 28 " MOSTLY ROTTEN D. FIR STUMP WITH NO VISIBLE SCRIBING.
(MARKED 26" FIR, S69°30'W, 46.20 FEET PER RECORD [02]).
(MARKED 16" FIR, S69°30'W, 46.20 FEET PER RECORD [03]).
(FIR 16", S69°30'W, 46.20 FEET PER RECORD [06]).
(28" D. FIR STUMP WITH VISIBLE SCRIBING, S69°30'W, 46.20 FEET PER RECORD [07]).
3. FOUND GLO BERAING TREE, NOW 48" X 6' D. FIR STUMP, N55°29'E, 9.63 FEET TO ORIGINAL FACE. STUMP HAS A CHOPPED OUT AND BURNT UPPER FACE. WE OPENED LOWER BLAZE TO VISIBLE SCRIBING "BT" AND NOTCH. SET ALUMINUM NAIL AND PLASTIC WASHER IN ORIGINAL FACE BELOW SCRIBING FOR DISTANCE AND ANGLE MEASUREMENT.
(FIR 15" DIAM. N52 1/2°E, 9.90 FEET PER RECORD [01]).
(30" FIR, N52 1/2°E, 10.30 FEET PER RECORDS [02], [03] AND [06]).
(28" D. FIR STUMP, N52 1/2°E, 9.90 FEET WITH BURNT OUT FACE AND CRUISER MARKS PER RECORD [07]).
4. FOUND 19" D. FIR WITH HEALED UPPER AND LOWER BLAZES, N41°12'E, 25.10 FEET TO CENTER. SET ALUMINUM NAIL AND PLASTIC WASHER IN NW BASE FOR DISTANCE MEASUREMENT.
(18" D. FIR, N40°E, 25.5 FEET, SCRIBED "1/4S16" ABOVE "BT" PER RECORD [07]).
5. FOUND 20" D. FIR WITH HEALED UPPER AND LOWER BLAZES, N89°55.E, 26.98 FEET TO CENTER. SET ALUMINUM NAIL AND PLASTIC WASHER IN NORTHERLY BASE FOR DISTANCE MEASUREMENT.
(21" D. FIR, S89°E, 27.0 FEET, SCRIBED "1/4S21" ABOVE "BT" PER RECORD [07]).
6. FOUND 16" D. FIR WITH HEALED UPPER AND LOWER BLAZES, S26°49'W, 18.07 FEET TO CENTER. SET ALUMINUM NAIL AND PLASTIC WASHER IN NW BASE FOR DISTANCE MEASUREMENT.
(13" D. FIR, S25°W, 18.1 FEET, SCRIBED "1/4S21" ABOVE "BT" PER RECORD [07]).
7. FOUND 10" D. FIR WITH HEALED UPPER AND LOWER BLAZES, N72°25'W, 28.34 FEET TO CENTER. SET ALUMINUM NAIL AND PLASTIC WASHER IN NORTHERLY BASE FOR DISTANCE MEASUREMENT.
(8" D. FIR N71°W, 28.4 FEET, SCRIBED "1/4S16" ABOVE "BT" PER RECORD [07]).

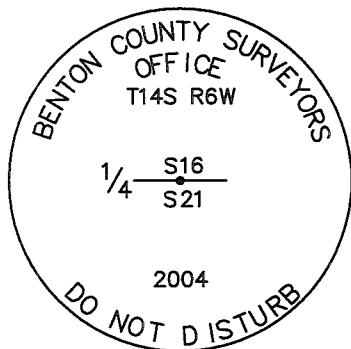
MONUMENT SET (PROCEDURES AND DESCRIPTION):

NO EVIDENCE OF ORIGINAL GLO MONUMENT OR STONE PER RECORD [02] COULD BE FOUND AFTER A THOROUGH SEARCH OF THE AREA. WE HELD THE 5/8" IRON ROD AS SET PER RECORD [07] FOR THE TRUE CORNER POSITION. WE BELIEVE THIS MONUMENT TO BE A GOOD FAITH EFFORT TO RESTORE THE ORIGINAL POSITION OF THE SUBJECT CORNER.

LOWERED THE 5/8" IRON ROD TO 6" BELOW GROUND LEVEL AND SET 2" X 31 1/2" GALVANIZED IRON PIPE OVER 5/8" IRON ROD, WITH A 3 1/4" BRASS DISK CONCRETED IN THE TOP, FLUSH WITH GROUND LEVEL AND MARKED AS SHOWN ON PAGE 2 OF 2. SET 6 FOOT ORANGE CARSONITE "SURVEY MARKER" POST 1 FOOT SOUTHEAST OF NEW MONUMENT.



MONUMENT DETAIL



3 1/4" BRASS DISK

LEGEND

- SET 5/8" X 30" REBAR WITH YELLOW PLASTIC CAP MKD "BENTON COUNTY SURVEYOR"
- (F) MEASUREMENT TO FACE
- (C) MEASUREMENT TO CENTER
- ⊙ GOVERNMENT MONUMENT SET AS SHOWN
- ⊙ BEARING TREE AS NOTED
- C.S.B.T. COUNTY SURVEYORS BEARING TREE
- GLO GENERAL LAND OFFICE

NEW ACCESSORIES:

1. SET REBAR (SEE LEGEND) 7" BELOW GOUND LEVEL S53°43'W, 47.70 FEET.
2. SET REBAR (SEE LEGEND) 7" BELOW GROUND LEVEL N11°47'W, 21.54 FEET.

NOTES:

COMPASS DECLINATION IS 20° EAST. ALL MEASURED DISTANCES AND BEARINGS ARE TO THE CENTER OF THE OBJECT, UNLESS OTHERWISE NOTED. ALL BEARING TREES ARE PAINTED AND HAVE A B.T. TAG ATTACHED, FACING THE CORNER UNLESS OTHERWISE NOTED. ALL NEW BEARING TREES HAVE A PLASTIC WASHER (STAMPED "BENTON COUNTY SURVEYOR CORNER RESTORATION") ATTACHED (BY ALUMINUM NAIL) TO THE FACE, BELOW THE "BT" FOR DISTANCE AND ANGLE MEASUREMENT UNLESS OTHERWISE NOTED. THE DRAWING IS FROM AUTOCAD RELEASE 2002.

THIS RESTORATION WAS PERFORMED AT THE DIRECTION AND APROVAL OF THE BENTON COUNTY SURVEYOR. Rw

FIRM/AGENCY: BENTON COUNTY SURVEYOR'S OFFICE
 ADDRESS: 360 S.W. AVERY AVE. CORVALLIS OR 97333; PH. 766-6821
 PRESENT: DAVID M. DEAN, P.L.S. AND ADAM CASALEGNO, SURVEY TECH.
 EQUIPMENT: LEICA TCR 1105 WITH TDS

REGISTERED
 PROFESSIONAL
 LAND SURVEYOR

12/13/04 *David M. Dean*

OREGON
 JULY 13, 1984
 DAVID M. DEAN
 2090

RENEWAL DATE: 12/31/05

CS. # 210
 (Cov. # 11680)
 T.W. Howley - owner
 T. H.S. R.G.W.
 June 16 - July 16 - 1914

N.W. COR. Wth McLAGUN Cl. 62. 1" $\frac{1}{2}$ " SET. 146 SET. 1417 OAK POST.
 FIR 10 (now 21) S. 80° E. 50' (15.584° 50) "H/2 PL. 12 (now 20) S. 45° E. 38' (15.539° E. 38)

C. Surv

S. W. COR. Wth McLAGUN Cl. 62. SET. 8 X 6 X 14" STONE
 OAK 14 (now 26) N. 6° E. 67' OTHER TREE COMPLETELY GONE

N. W. COR. ISAAC RAMBO Cl. 62. SET $\frac{1}{2}$ " PIPE IN ORIGINAL HOLE,
 OAK S. 38° W (15.314°) 57' (15.534) OAK N. 40° W (15.442°) 52' (15.511).

S. W. COR. ISAAC RAMBO Cl. 62. STONE 18 X 10 X 4 - ORIGINAL HOLE
 OAK 18 (now 24) N. 8° E. 55'
 MARK OAK 11 N. 58 $\frac{1}{2}$ ° W. 503

N. E. COR. ISAAC RAMBO Cl. 62 STONE 16 X 12 X 6"
 OLD STUMPS N. 80° W. 291, N. 35° E. 3.18.
 MARK OAK 5 N. 83 $\frac{3}{4}$ ° W. 2.414, OAK 12 S. 61 $\frac{3}{4}$ ° W. 3.075

COR. OF SECS. 22, 23, 26 & 27. SET $\frac{1}{2}$ " PIPE
 OAK 20" N. 40 $\frac{1}{2}$ ° E. 12.75 (15.12480) OAK 20. S. 77 $\frac{3}{4}$ ° E. 4.84

$\frac{1}{4}$ SEC. COR. BET. SECS. 22 & 23, SET. IRON PIPE. OLD COR. OBLITERATED,
 SET ON TRUE SECTION EQUIDISTANT FROM SEC. COR.
 FROM WHICH THE S. E. COR. OF THE Wth McLAGUN Cl. 62 BEARS N. 88° 33' E. 749.

W.C. TO
 COR. OF SECS. 14, 15, 22 & 23, SET STONE 18 X 10 X 8 10' HS N. OF TRUE COR.
 LARGE SECOND GROWTH FIR STUMP STANDS IN ORIGINAL POSITION OF SEC. COR.
 DRIG. TREE BEARS N. 62° E. 1287-8 $\frac{1}{2}$ ° SLOPE = 1.273 FROM W.C.
 MARK FIR 24" S. 82 $\frac{1}{2}$ ° W. 435, FIR 14. S. 70 $\frac{3}{4}$ ° E. 902, OAK 20" S. 83 $\frac{1}{2}$ ° W. 2363

$\frac{1}{4}$ SEC. COR. BET. SECS. 21 & 22, SET STONE 16 X 8 X 6" FROM WHICH
 OAK 7 (now 12) S. 3° W. 82 ALDER GONE
 MARK FIR 20" N. 32 $\frac{3}{4}$ ° E. 932

$\frac{1}{4}$ SEC. COR. BET. SECS. 21 & 28. SET $\frac{1}{2}$ " PIPE
 LAUREL 13" N. 40° E. 124 (13.1232) LAUREL 16. S. 55° W. 54 (15.528)
 MARK FIR 28" N. 75 $\frac{1}{2}$ ° W. 736 YEW 7" S. 60 $\frac{1}{4}$ ° W. 663

$\frac{1}{4}$ SEC. COR. BET. SECS. 21 & 28. SET STONE 5" X 12" X 22" FROM WHICH
 FIR 56" S. 58° E. (15.574°) STANDING STUMP 16 (now 32) S. 67° W (15.51 $\frac{3}{4}$) 10.1 HS
 MARK FIR 32" S. 86° W. 441

CORS. IN F
h)

$\frac{1}{4}$ SEC. COR. BET. SECS. 16 & 21 ORIGINAL COR. WAS MAPLE TREE. JUST SOUTH SHOULDER
 OF TREE REMAINS. SET STONE 18 X 8 X 6 IN CENTER OF HOLLOWED OUT ROOTS.
 FIR 16 (now 30) N. 52 $\frac{1}{2}$ ° E. 15 (15.156) FIR 7 (now 12) S. 52 $\frac{1}{2}$ ° W. 29 (15.301)
 MARK FIR 16" S. 69 $\frac{1}{2}$ ° W. 70



COR. OF SECS. 21, 22, 27 & 28, SET 0 $\frac{3}{4}$ " IRON PIPE
 OAK 16 (now 24) N. 32 $\frac{3}{4}$ ° W. 545, OAK 20 N. 51 $\frac{3}{4}$ ° E. 788, OAK 30 S. 64° E. 53
 MARK OAK 7, S. 62° W. 1.043

WITNESSES ON REESTABLISHMENTS IN CS. 210, WJRD WILKES, CLAIR WILKES, W.C. GRAVES

1/4-Section corner between sections 16 and 21, Twp. 14-6

2379

(4)

Reestablishment by W. C. Galloway

July 16, 1914

Original corner was Maple tree. Just south shell of tree remains.
Set stone 18 x 8 x 6 in center of hollowed out roots.

Fir 16" (now 30") bears N $52\frac{1}{2}^{\circ}$ E . 15 chains (.156 chains)

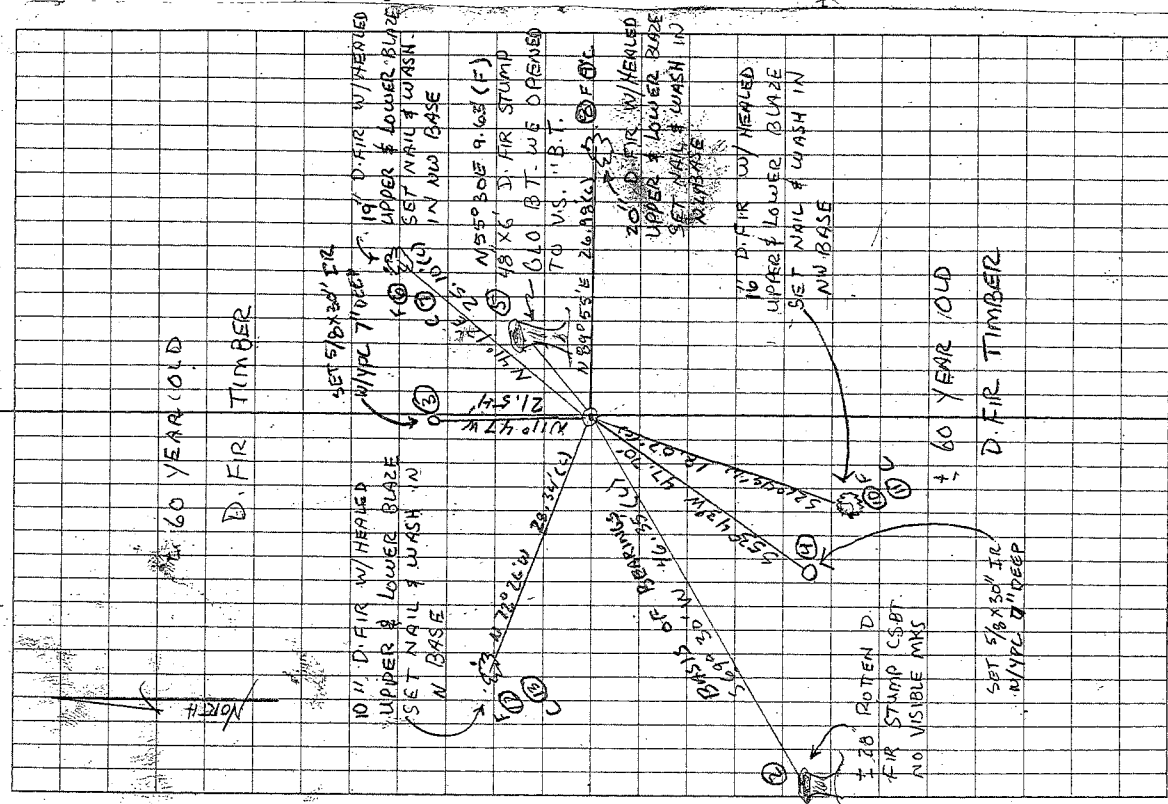
Fir 7" in diam (now 12") bears S $52\frac{1}{2}^{\circ}$ W .29 chains (.301)

Fir 16" in diam bears S $69\frac{1}{2}^{\circ}$ W .70 chains

140340400

12/7/04 22/70
 D. DEAN
 A. COSALEGNO

CLOUDY, COOL, RAIN
 48°F 29.6" Hg
 LEICA TCR 105/TDS



146340400
 REMONUMENTING 1/4 21 T145 R6W
 Fd. 5/8 IR w/RPC MKD "NORTHSTAR PLS
 1823" FLUSH w/GROUND LEVEL PER RECORD
 [07], Fd ± 28" ROTTEN D. FIR STUMP (S.B.T.)
 NO VISIBLE MARKS REMAIN. Fd NE GLO
 BT - Now 48" D. FIR STUMP w/CHOPPED
 OUT AND BURNT UPPER FACE. WE OPENED
 LOWER FACE TO VISIBLE SCRIBING "BT"
 HELD 5/8" IR. PER RECORD [07] (C.S. 9336)
 FOR TRUE CORNER. STONE PER RECORD
 [02] IS MISSING. SW GLO BT IS
 MISSING LOWERED 5/8" I.R. TO 6"
 BELOW GROUND LEVEL AND SET 2" X 3 1/2"
 G.I.P. OVER 5/8" I.R. w/ 3/14" BRASS
 DISK CONC. IN TOP, FLUSH w/GROUND
 LEVEL, MKD AS SHOWN. SET 6' ORANGE
 CARBONITE "SURVEY MARKER" POST 1' SOUTH WEST
 OF NEW MONUMENT.
 SET LOCATION TAG
 ON 18" D. FIR
 SOUTH SIDE OF
 GREEN PEAK Rd
 SIDE, 7 CH TO
 CORNER
 T145 R6W
 1/4 5/6
 521
 2004
 3 1/4" BRASS DISK