

146500600

CORNER FILE TRACKING

H:\Survey\Corners\Misc\Filetrac2.doc

06/15/2003

CORNER NUMBER
146500600

STEP	HISTORY()	RESTORATION()
Form Prepared, DB	8/1/07	8/10/07
Field Inspection, DB	8/9/07	8/9/07
Form Checked, DB	8/20/07	8/20/07
Form Edited, DB	8/23/07	8/23/07
Form Signed, DB	8/23/07	8/23/07
Counter Index	8/9/07	8/9/07
GIS Index	8/9/07	8/9/07
Authorize Payment, DB	—	—
Archive Digital Files	8/24/07	8/24/07
Collect Documents	N/A	N/A
Scanned	8-29-07	8-29-07
Copy For Filming	8/24/07	8/24/07
Filed, DB		
Finish index (count unit)	8/9/07	8/9/07
Filmed (Archived), DB		
Document No's to Andrew		

(DB) = Entry needed in database (Access).

COMMENTS:

DATE 08/01/2007TOWNSHIP 14 SOUTH, RANGE 06 WEST, WILLAMETTE MERIDIAN; SECTION 02 CORNER SOUTHWEST
DONATION LAND CLAIM N/A CORNER N/A**COMMON CORNER(S).**SOUTHEAST CORNER OF SECTION 3
NORTHEAST CORNER OF SECTION 10
NORTHWEST CORNER OF SECTION 11**RECORDS (INFORMATION IN BOLD ITALICS IS COUNTY STAFFS' INTERPRETATION OF THE RECORD)**BASED ON EXTENSIVE RESEARCH AND RECOVERY OF EVIDENCE, THIS OFFICE HAS DETERMINED THAT MOST GENERAL LAND OFFICE
SURVEYORS MEASURED TO THE FACE OF BEARING TREES[01] GENERAL LAND OFFICE (GLO) NOTES BY KIMBALL WEBSTER, D S , DATED JANUARY 9, 1854 SET A POST. MARKED A 10" W.
OAK N10 1/2°E, 76 LKS. (50.16 FT.), A 40" FIR S45°E, 2 LKS. (1.32 FT.), A 12" W. OAK S67 1/4°W, 92 LKS. (60.72 FT.) AND
AN 18" W. OAK N41°W, 102 LKS. (67.32 FT.)**NOTES:**THIS IS A MICROSOFT WORD 2000 DOCUMENT NAMED "46500600" CREATED FROM A BOILER PLATE DOCUMENT NAMED "HISTORY",
WHICH HAS A STYLESHEET NAMED "CORNER" ATTACHED TO IT**FIRM/AGENCY:** BENTON COUNTY SURVEYOR'S OFFICE
ADDRESS: 360 S W AVERY AVE CORVALLIS OR 97333, PH 766-6821
RESEARCH BY: BERNARD S ALTENBACH, ENGINEER/SURVEY TECH
DATA ENTRY BY: SAME

BENTON COUNTY CORNER RESTORATION FORM, PAGE 1 OF 2, 146500600R1
SEE CORNER HISTORY FORM FOR RECORDS ETC.

CORNER RESTORATION FIELD BOOK NUMBER 25 PAGE(S) 62 DATE 08/09/2007
TOWNSHIP 14 SOUTH, RANGE 6 WEST, WILLAMETTE MERIDIAN, SECTION 02 CORNER SOUTHWEST
DONATION LAND CLAIM NONE CORNER NONE
CONDITION REPORT _____; REFERENCED OUT _____; RENEWED XX; SURVEYED IN _____

LOCATION AND COMMENTS:

CORNER IS LOCATED IN A STAND OF ±80 YEAR OLD D FIR TIMBER ON A WESTERLY FACING SLOPE TO REACH CORNER FROM THE JUNCTION OF DAWSON AND REESE CREEK ROADS, TRAVEL NORTHERLY ON REESE CREEK ROAD FOR 1.31 MILES, THEN LEFT (PASSING THROUGH LOCKED GATE) FOR 0.67 MILES, THEN LEFT ON SPUR FOR 0.15 MILES, THEN LEFT ON SPUR FOR 0.10 MILES, THEN LEFT ON SPUR FOR 0.09 MILES, THEN RIGHT ON SPUR FOR 0.16 MILES AND PARK ON RIDGE TOP; THEN WALK SOUTH 250 FEET TO CORNER. CORNER IS POOR FOR PREMARKING AND GPS CONTROL.

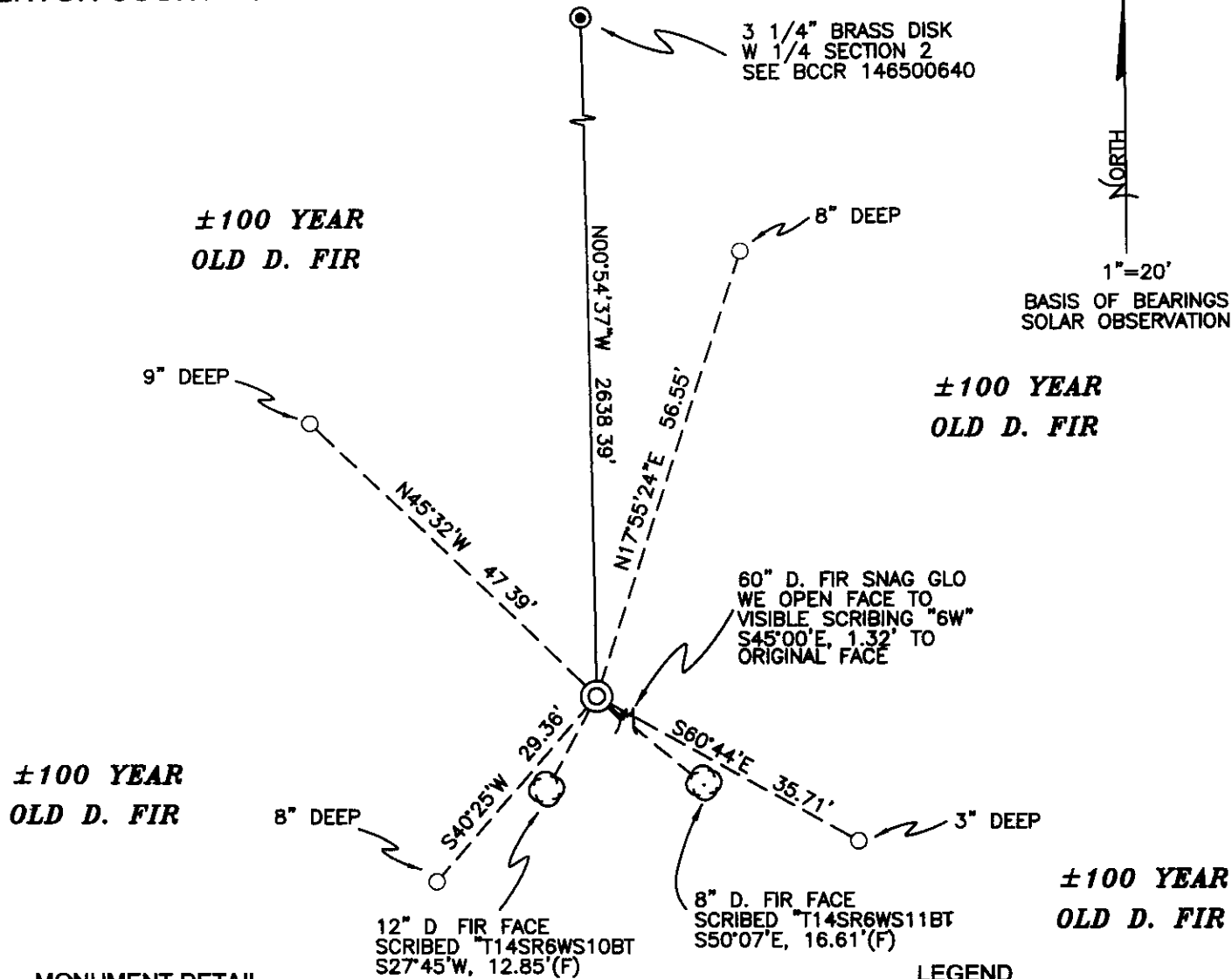
MONUMENTS AND ACCESSORIES FOUND (CONDITION AND SOURCE):

- 1 FOUND 60" D FIR SNAG, GLO BEARING TREE, S45°00'E, 1.32 FEET FROM CORNER POSITION. WE OPENED THIS TREE TO VISIBLE SCRIBING "6W", BURNT FACE AND OTHER ILLEGIBLE MARKS
(SET POST COR TO SECS 2, 3, 10 AND 11 FROM WHICH A FIR, 40 IN DIAM BEARS, S45°E, 2 LKS (1.32 FEET) PER RECORD [01])
- 2 FOUND ROOT HOLE OF PROBABLE NORTHEAST GLO BEARING TREE, N41°W, 68.2 FEET (BY COMPASS AND TAPE ONLY) TO CENTER OF ROOT HOLE
(A W OAK 18 IN DIAM BEARS N41°W, 102 LKS (67.32 FEET) PER RECORD [01])

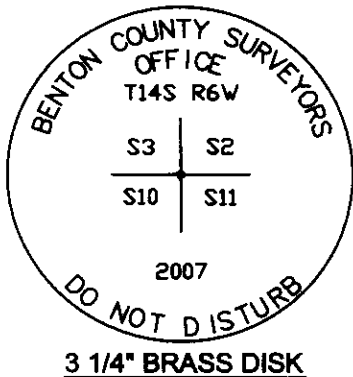
MONUMENT SET (PROCEDURES AND DESCRIPTION):

FOUND VERY ROTTEN, PARTIALLY BURNT, 4" SQUARED X 28" FIR POST LYING LOOSE AT APPROXIMATE CORNER POSITION. WE DO NOT BELIEVE THIS POST TO BE ORIGINAL, BUT FOUND NO RECORD OF ITS ORIGIN. THE GLO TOPO CALLS (TOP OF RIDGE) TO THE NORTH AND SOUTH COMPARE NICELY. POSITION OF CORNER WAS CALCULATED FROM THE FACE OF THE RECOVERED SOUTHEAST GLO BEARING TREE.

AT THE CALCULATED POSITION, SET A 2" X 3 1/2" GALVANIZED IRON PIPE WITH A 3 1/4" BRASS DISK CONCRETED IN THE TOP, 11" ABOVE GROUND LEVEL AND MARKED AS SHOWN ON PAGE 2 OF 2. PIPE WAS DRIVEN TO REFUSAL IN THE DEAD AND ROTTEN ROOTS OF THE SAID SOUTHEAST BEARING TREE. SET 6 FOOT ORANGE CARSONITE "SURVEY MARKER" POST 1.0 FEET NORTH OF NEW MONUMENT.



MONUMENT DETAIL



LEGEND

- SET 5/8" X 30" REBAR WITH YELLOW PLASTIC CAP MKD "BENTON COUNTY SURVEYOR"
- (F) MEASUREMENT TO FACE
- ⊙ GOVERNMENT MONUMENT SET AS SHOWN
- ⊙ GOVERNMENT MONUMENT FOUND AS SHOWN
- ⊙ BEARING TREE AS NOTED
- BCCR GOLO BEARING TREE SNAG AS NOTED

NEW ACCESSORIES:

- 1 SET REBAR (SEE LEGEND) 8" BELOW GROUND LEVEL N17°55'24"E, 56.55 FEET.
2. SET REBAR (SEE LEGEND) 3" BELOW GROUND LEVEL S60°44'E, 35.71 FEET
- 3 SET REBAR (SEE LEGEND) 8" BELOW GROUND LEVEL S40°25'W, 29.36 FEET
- 4 SET REBAR (SEE LEGEND) 9" BELOW GROUND LEVEL N45°32'W, 47.39 FEET.
- 5 8" D FIR FACE SCRIBED "T14SR6WS11BT" S50°07'E, 16.61 FEET TO FACE.
6. 12" D. FIR FACE SCRIBED "T14SR6WS10BT" S27°45'W, 12.85 FEET TO FACE.

NOTES

COMPASS DECLINATION IS 20° EAST ALL MEASURED DISTANCES AND BEARINGS ARE TO THE CENTER OF THE OBJECT, UNLESS OTHERWISE NOTED. ALL BEARING TREES ARE PAINTED AND HAVE A B.T. TAG ATTACHED, FACING THE CORNER UNLESS OTHERWISE NOTED ALL NEW BEARING TREES HAVE A PLASTIC WASHER (STAMPED "BENTON COUNTY SURVEYOR CORNER RESTORATION") ATTACHED (BY ALUMINUM NAIL) TO THE FACE, BELOW THE "BT" FOR DISTANCE AND ANGLE MEASUREMENT UNLESS OTHERWISE NOTED. THE DRAWING IS FROM AUTOCAD RELEASE 2006.

THIS RESTORATION WAS PERFORMED AT THE DIRECTION AND APPROVAL OF THE BENTON COUNTY SURVEYOR. DMD

FIRM/AGENCY BENTON COUNTY SURVEYOR'S OFFICE
 ADDRESS: 360 S.W. AVERY AVE CORVALLIS OR 97333; PH 766-6821
 PRESENT. DAVID M. DEAN, P.L.S., BERNIE ALTENBACH, SURVEY TECH.
 AND CODY WHEELER, SURVEY TECH.
 EQUIPMENT LEICA TCR 1105/TDS RECON WITH SURVEY PRO.

REGISTERED
PROFESSIONAL
LAND SURVEYOR

8/23/07 David M. Dean

OREGON
JULY 13, 1984
DAVID M. DEAN
2090

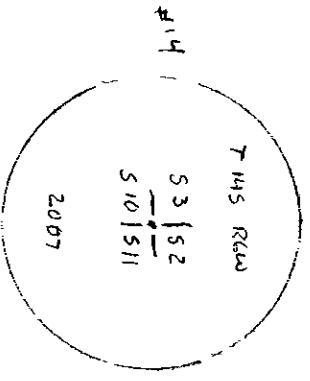
RENEWAL DATE: 12/31/07

14650600

3 1/2
10/11

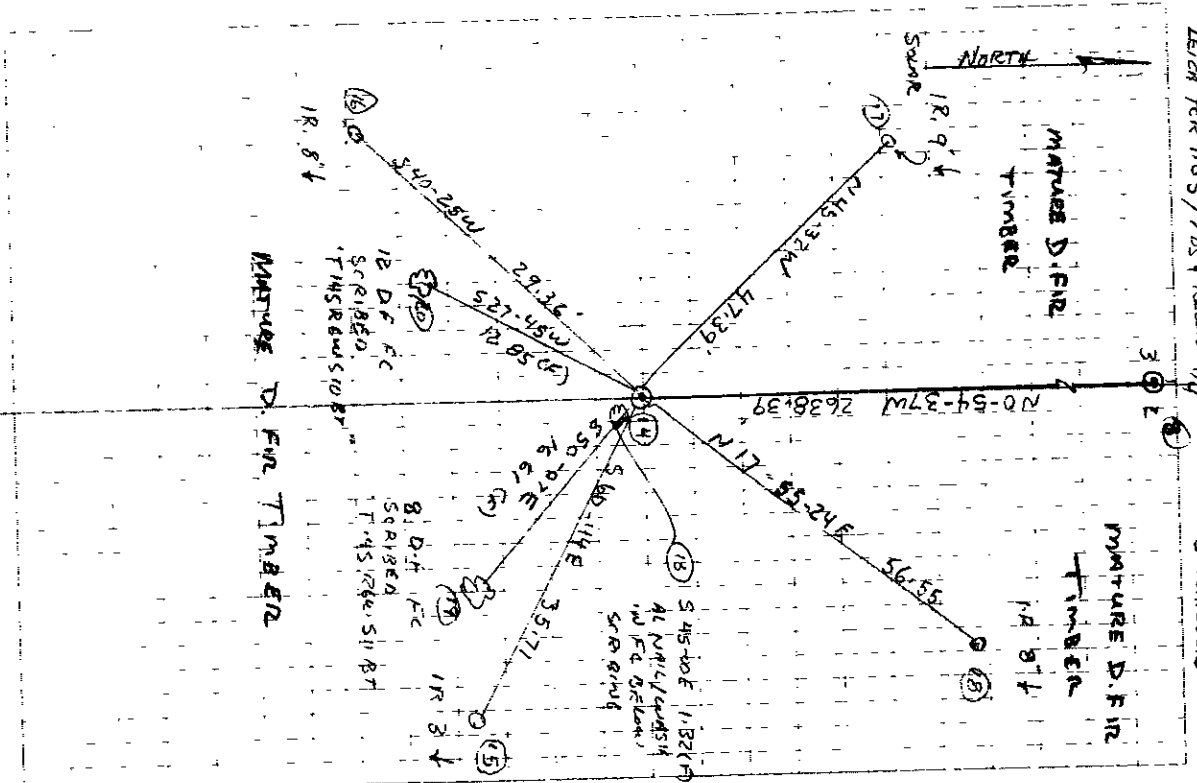
7145 RBW

REMARKS: FID SE GLO BT - ALONG SB D FIRE SWAG
 WAS OPEN TO VS '6W" AND RUMENT
 FACE - FID STUMP & HOLE OF WAS GLO
 BT SWAGNE GLO BT'S ARE MISSING
 CALC. COR POSITION FM FACE OF
 FIR BT SET AT NAIL & PLASTIC WASH
 IN FACE BTLOW SCRIBING AT CALC.
 POSITION SET 2' X 3 1/2" G.I.P W/ 3 1/4" BRASS
 DISK CONC. IN TOP 1/2" (DRIVEN TO REFUSAL)
 SET 6' ORANGE CARSONITE 'SURVEY
 MARKER POST ¹⁰ N OF NEW MON



CLB'Y, MID
 700 F (P.M) 29.5 '149
 LEIGH TOR 1105 / 705 F REGAIN 1/4

8/9/07
 D DENN
 B ALTENBACH
 C WINTERER
 25/62



DATE 08/01/2007TOWNSHIP 14 SOUTH, RANGE 06 WEST, WILLAMETTE MERIDIAN; SECTION 02 CORNER SOUTHWEST
DONATION LAND CLAIM N/A CORNER N/A**COMMON CORNER(S).**SOUTHEAST CORNER OF SECTION 3
NORTHEAST CORNER OF SECTION 10
NORTHWEST CORNER OF SECTION 11**RECORDS (INFORMATION IN BOLD ITALICS IS COUNTY STAFFS' INTERPRETATION OF THE RECORD)**BASED ON EXTENSIVE RESEARCH AND RECOVERY OF EVIDENCE, THIS OFFICE HAS DETERMINED THAT MOST GENERAL LAND OFFICE
SURVEYORS MEASURED TO THE FACE OF BEARING TREES

[01] GENERAL LAND OFFICE (GLO) NOTES BY KIMBALL WEBSTER, D S , DATED JANUARY 9, 1854 *SET A POST. MARKED A 10" W. OAK N10 1/2°E, 76 LKS. (50.16 FT.), A 40" FIR S45°E, 2 LKS. (1.32 FT.), A 12" W. OAK S67 1/4°W, 92 LKS. (60.72 FT.) AND AN 18" W. OAK N41°W, 102 LKS. (67.32 FT.)*

NOTES.

THIS IS A MICROSOFT WORD 2000 DOCUMENT NAMED "46500600" CREATED FROM A BOILER PLATE DOCUMENT NAMED "HISTORY", WHICH HAS A STYLESHEET NAMED "CORNER" ATTACHED TO IT

FIRM/AGENCY: BENTON COUNTY SURVEYOR'S OFFICE
ADDRESS: 360 S W AVERY AVE CORVALLIS OR 97333, PH 766-6821
RESEARCH BY: BERNARD S ALTENBACH, ENGINEER/SURVEY TECH
DATA ENTRY BY: SAME

BENTON COUNTY CORNER RESTORATION FORM, PAGE 1 OF 2, 146500600R1
SEE CORNER HISTORY FORM FOR RECORDS ETC.

CORNER RESTORATION FIELD BOOK NUMBER 25 PAGE(S) 62 DATE 08/09/2007
TOWNSHIP 14 SOUTH, RANGE 6 WEST, WILLAMETTE MERIDIAN; SECTION 02 CORNER SOUTHWEST
DONATION LAND CLAIM NONE CORNER NONE
CONDITION REPORT ; REFERENCED OUT , RENEWED XX, SURVEYED IN

LOCATION AND COMMENTS:

CORNER IS LOCATED IN A STAND OF ±80 YEAR OLD D FIR TIMBER ON A WESTERLY FACING SLOPE TO REACH CORNER FROM THE JUNCTION OF DAWSON AND REESE CREEK ROADS, TRAVEL NORTHERLY ON REESE CREEK ROAD FOR 1.31 MILES, THEN LEFT (PASSING THROUGH LOCKED GATE) FOR 0.67 MILES, THEN LEFT ON SPUR FOR 0.15 MILES, THEN LEFT ON SPUR FOR 0.10 MILES, THEN LEFT ON SPUR FOR 0.09 MILES, THEN RIGHT ON SPUR FOR 0.16 MILES AND PARK ON RIDGE TOP, THEN WALK SOUTH 250 FEET TO CORNER. CORNER IS POOR FOR PREMARKING AND GPS CONTROL.

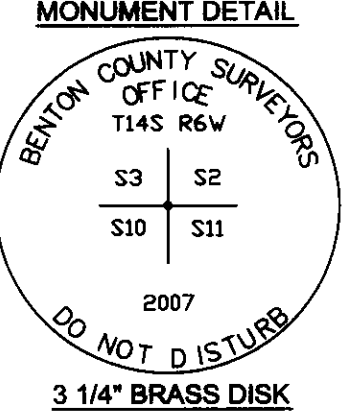
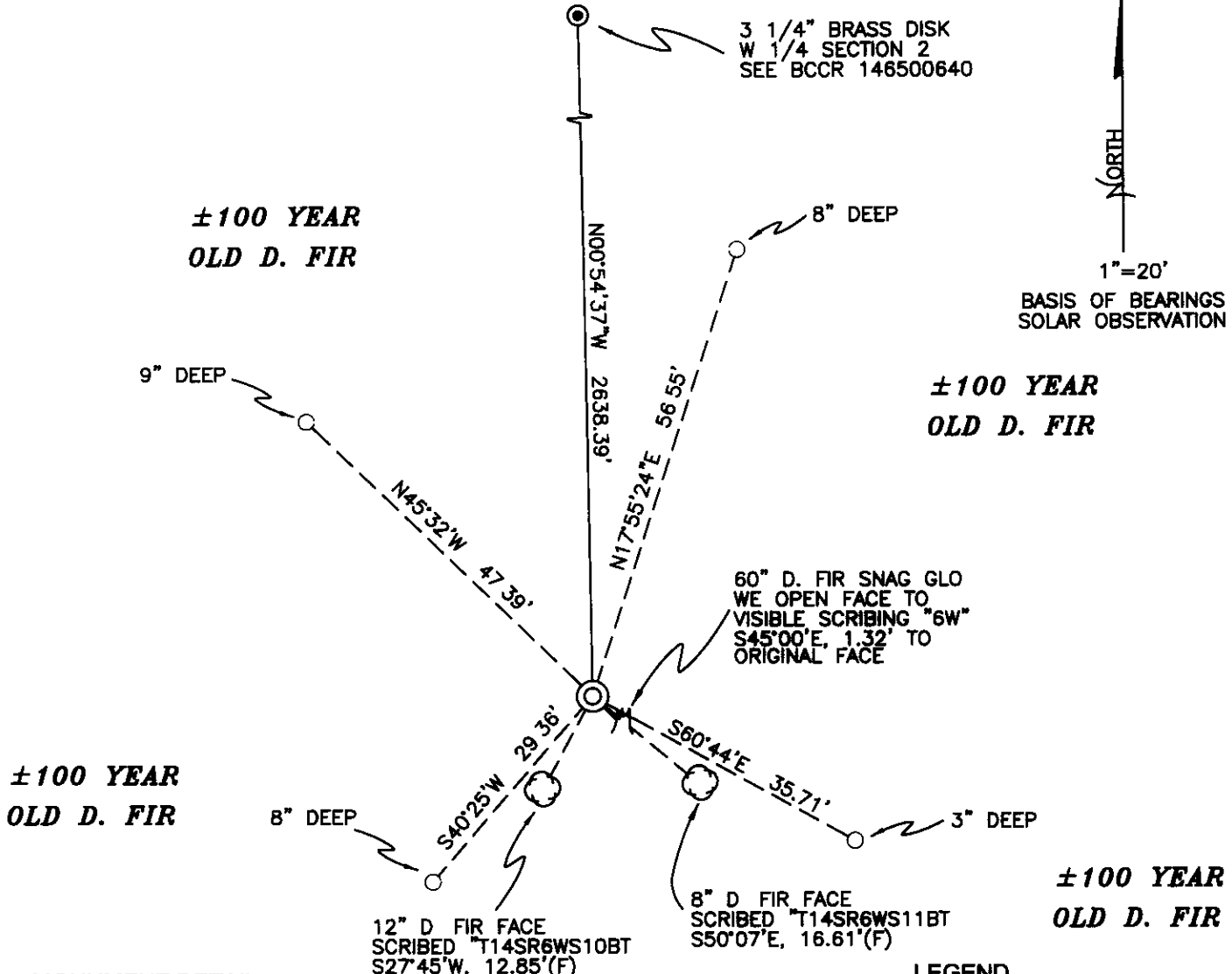
MONUMENTS AND ACCESSORIES FOUND (CONDITION AND SOURCE):

- 1 FOUND 60" D FIR SNAG, GLO BEARING TREE, S45°00'E, 1.32 FEET FROM CORNER POSITION. WE OPENED THIS TREE TO VISIBLE SCRIBING "6W", BURNT FACE AND OTHER ILLEGIBLE MARKS (SET POST COR. TO SECS 2, 3, 10 AND 11 FROM WHICH A FIR, 40 IN DIAM BEARS, S45°E, 2 LKS (1.32 FEET) PER RECORD [01])
- 2 FOUND ROOT HOLE OF PROBABLE NORTHEAST GLO BEARING TREE, N41°W, 68.2 FEET (BY COMPASS AND TAPE ONLY) TO CENTER OF ROOT HOLE (A W OAK 18 IN DIAM BEARS N41°W, 102 LKS (67.32 FEET) PER RECORD [01])

MONUMENT SET (PROCEDURES AND DESCRIPTION):

FOUND VERY ROTTEN, PARTIALLY BURNT, 4" SQUARED X 28" FIR POST LYING LOOSE AT APPROXIMATE CORNER POSITION. WE DO NOT BELIEVE THIS POST TO BE ORIGINAL, BUT FOUND NO RECORD OF ITS ORIGIN. THE GLO TOPO CALLS (TOP OF RIDGE) TO THE NORTH AND SOUTH COMPARE NICELY. POSITION OF CORNER WAS CALCULATED FROM THE FACE OF THE RECOVERED SOUTHEAST GLO BEARING TREE.

AT THE CALCULATED POSITION, SET A 2" X 3 1/2" GALVANIZED IRON PIPE WITH A 3 1/4" BRASS DISK CONCRETED IN THE TOP, 11" ABOVE GROUND LEVEL AND MARKED AS SHOWN ON PAGE 2 OF 2. PIPE WAS DRIVEN TO REFUSAL IN THE DEAD AND ROTTEN ROOTS OF THE SAID SOUTHEAST BEARING TREE. SET 6 FOOT ORANGE CARSONITE "SURVEY MARKER" POST 1.0 FEET NORTH OF NEW MONUMENT.



- LEGEND**
- SET 5/8" X 30" REBAR WITH YELLOW PLASTIC CAP MKD "BENTON COUNTY SURVEYOR"
 - (F) MEASUREMENT TO FACE
 - ⊙ GOVERNMENT MONUMENT SET AS SHOWN
 - ⊙ GOVERNMENT MONUMENT FOUND AS SHOWN
 - ⊙ BEARING TREE AS NOTED
 - BCCR BENTON COUNTY CORNER RESTORATION
 - GLO GENERAL LAND OFFICE
 - M BEARING TREE SNAG AS NOTED

NEW ACCESSORIES

- 1 SET REBAR (SEE LEGEND) 8" BELOW GROUND LEVEL N17°55'24"E, 56.55 FEET
- 2 SET REBAR (SEE LEGEND) 3" BELOW GROUND LEVEL S60°44'E, 35.71 FEET
- 3 SET REBAR (SEE LEGEND) 8" BELOW GROUND LEVEL S40°25'W, 29.36 FEET
- 4 SET REBAR (SEE LEGEND) 9" BELOW GROUND LEVEL N45°32'W, 47.39 FEET
5. 8" D FIR FACE SCRIBED "T14SR6WS11BT" S50°07'E, 16.61 FEET TO FACE.
- 6 12" D FIR FACE SCRIBED "T14SR6WS10BT" S27°45'W, 12.85 FEET TO FACE.

NOTES

COMPASS DECLINATION IS 20° EAST. ALL MEASURED DISTANCES AND BEARINGS ARE TO THE CENTER OF THE OBJECT, UNLESS OTHERWISE NOTED ALL BEARING TREES ARE PAINTED AND HAVE A BT TAG ATTACHED, FACING THE CORNER UNLESS OTHERWISE NOTED ALL NEW BEARING TREES HAVE A PLASTIC WASHER (STAMPED "BENTON COUNTY SURVEYOR CORNER RESTORATION") ATTACHED (BY ALUMINUM NAIL) TO THE FACE, BELOW THE "BT" FOR DISTANCE AND ANGLE MEASUREMENT UNLESS OTHERWISE NOTED THE DRAWING IS FROM AUTOCAD RELEASE 2006.

THIS RESTORATION WAS PERFORMED AT THE DIRECTION AND APPROVAL OF THE BENTON COUNTY SURVEYOR, David M. Dean

FIRM/AGENCY BENTON COUNTY SURVEYOR'S OFFICE
 ADDRESS 360 S.W. AVERY AVE CORVALLIS OR 97333; PH 766-6821
 PRESENT DAVID M. DEAN, P.L.S., BERNIE ALTENBACH, SURVEY TECH.
 AND CODY WHEELER, SURVEY TECH
 EQUIPMENT LEICA TCR 1105/TDS RECON WITH SURVEY PRO.

8/23/07 David M. Dean

REGISTERED
PROFESSIONAL
LAND SURVEYOR

OREGON
JULY 13, 1984
DAVID M. DEAN
2090

RENEWAL DATE: 12/31/07

INVERSE

14	6324 31	6154.70	319.18	Cogo
14 - 8	8962 37	6112 78	244.25	1/4 3/2 14-6
Bearing: N 00°54'37.3" W		Horizontal Distance	2638 39	
14 - 18	6378 12	6172 10	325.59	ir
Bearing: N 17°55'24.1" E		Horizontal Distance	56.55	
14 - 15	6306 85	6185.85	325.57	ir
Bearing S 60°43'52 4" E		Horizontal Distance:	35.71	
14 - 19	6313 66	6167.45	323 47 8	df
Bearing S 50°06'37 3" E		Horizontal Distance:	16.61	
14 - 13	6323 38	6155.63	319 18 58	df snag bt
Bearing S 45°00'00 0" E		Horizontal Distance:	1.32	
14 - 20	6312.94	6148.71	318 09 12	df
Bearing S 27°45'11 5" W		Horizontal Distance:	12 85	
14 - 16	6301.96	6135.67	311 05	ir
Bearing S 40°24'40 7" W		Horizontal Distance:	29 36	
14 - 17	6357.50	6120.88	311.58	ir
Bearing: N 45°32'26.0" W		Horizontal Distance	47 39	

Raw File> S:\Survey Corners\CORNER\T-14\46500600.RW5

CRD File> \\Bcsrv130\Gisroot\Survey Corners\CORNER\T-14\46500600.crd

Note

JB,NM46863040,DT08-03-2007,TM13.29:22

MO,AD0,UN2,SF1 0,EC1,EO0 0,AU0

PntNo	Northing	Easting	Elevation	Desc
1	5000 0000	5000 0000	100 0000	spike

Note

Data Collector Serial Number. FS74A57479

Activating Total Station Manual Mode

PntNo	Northing	Easting	Elevation	Desc
2	5309 1153	5063 1298	129 6840	spike
3	6045 0836	5198 3436	198.8377	spike
4	6471.4513	5229 9918	246.6472	spike
5	6673.3181	5530.0177	330.6296	spike
6	7908 1994	4911.0136	364 9282	spike
50	7652 3998	4972 0136	95 0574	Cogo
51	4981 9953	4960 3617	95 0574	ir/ypc
101	9251.0002	6527.3961	303.3866	spike
102	7995 7307	6274.7897	148 5535	spike
103	8155 1132	7168 2159	-45 6707	spike
104	7859 0936	7527 0983	-136 3403	spike
105	7659.7966	7602 2049	-157 0803	5/8 ir
150	7648.5598	7612.2108	95.0574	Cogo
200	7653 0921	4961 3588	95 0574	grant bndy calc
201	7659 7882	7602 2103	0 0000	grant bndy calc

Note

Coordinates imported from 46863040.crd as US Survey Feet

Activating Total Station Leica TPS Series [1105], COM1, 9600 baud, no parity

Foresight Target My Prism, HR 5.0 (5.0 + 0 0 Offset), Prism Const. 0.0mm

Date 08-03-2007 Time. 13 54:52

Date 08-03-2007 Time: 13:54:54

Data Collector Serial Number. FS74A57479

Activating Total Station Leica TPS Series [1105], COM1, 9600 baud, no parity

Foresight Target My Prism, HR 5.0 (5.0 + 0.0 Offset), Prism Const 0.0mm

OC,OP105,N 7659 79664,E 7602.204934,EL-157.080306,--5/8 ir

HR.5.0 (5.0 + 0 0 Offset)

InstHt RodHt

5.000 5 000

OcPt	BsPt	Azi	SetAzi
105	104		0°00'00"

Note

Fixed HR at Backsight 0.0 (0 0 + 0.0 Offset), Prism Const .0.0mm

BS check 105 - 104:ZE84.1701,SD214 053,HD err= 0 00879, VD err= 5 581529

BS Circle check : angular err= 82 5644

RD,BD 1 24.1830

RD,FD 1 0.0000

RD,ZD 1.

MD,SD 1.

RF,OP105,FP,AR0 0000,ZE,SD,HR5 0,--

RD,FV 1 180 0000

RD,ZV 1.

MD,SD 1.

RF,OP105,FP,AR180.0000,ZE,SD,HR5.0,--

RD,BV 1:180.0000

Horizontal Angle Error 0 0000

Zenith Angle Error 0.0000
 RD,BD 1 0 0005
 RD,FD 1 24.1837
 RD,ZD 1:114.2748
 MD,SD 1 71.34
 RF,OP105,FP106,AR24 1837,ZE114.2748,SD71.34,HR5.0,--4ft df stmp
 RD,FV 1 204.1859
 RD,ZV 1 245 3144
 MD,SD 1 71.342
 RF,OP105,FP106,AR204.1859,ZE245.3144,SD71 342,HR5 0,--4ft df stmp
 RD,BV 1 180.0000

Horizontal Angle Error 0 0027
 Zenith Angle Error 0 0028
 Slope Distance Error 0 002
 Horizontal Angle Error compares to the average: 0 0000
 Zenith Angle Error compares to the average: 0.0000
 Slope Distance Error compares to the average: 0.0

OcPt	FsPt	HorzAngle	SlopeDist	ZenithAng	Desc
SS 105	106	AR 24°18'46"	71.341	114°28'02"	4ft df stmp
PntNo	Northing	Easting	Elevation	Desc	
107	7658.7593	7601 7499	-186.6277	Cogo	

Note
 RD,BD 1:0 0000
 RD,FD 1 0 0000
 RD,ZD 1
 MD,SD 1
 RF,OP105,FP,AR0.0000,ZE,SD,HR5 0,--
 RD,FV 1:180 0000
 RD,ZV 1:
 MD,SD 1:
 RF,OP105,FP,AR180.0000,ZE,SD,HR5 0,--
 RD,BV 1 180.0000

Horizontal Angle Error 0.0000
 Zenith Angle Error 0 0000
 RD,BD 1 0 0004
 RD,FD 1:177 1229
 RD,ZD 1:70 5247
 MD,SD 1 28 862
 RF,OP105,FP60,AR177 1229,ZE70.5247,SD28 862,HR5.0,--1r/ypc
 RD,FV 1 357.1222
 RD,ZV 1 289 0707
 MD,SD 1 28 865
 RF,OP105,FP60,AR357.1222,ZE289.0707,SD28 865,HR5 0,--1r/ypc
 RD,BV 1:179 5955

Horizontal Angle Error: 0 0002
 Zenith Angle Error 0.0006
 Slope Distance Error: 0 003
 Horizontal Angle Error compares to the average: 0 0000
 Zenith Angle Error compares to the average: 0.0000
 Slope Distance Error compares to the average 0 0

OcPt	FsPt	HorzAngle	SlopeDist	ZenithAng	Desc
SS 105	60	AR 177°12'26"	28 863	70°52'50"	1r/ypc

Note
 OC,OP60,N 7634 776226,E 7613.054059,EL-147.626381,--1r/ypc
 OcPt BsPt Azi SetAzi
 60 104 0°00'00"

Note

Fixed HR at Backsight.0 0 (0.0 + 0 0 Offset), Prism Const 0 0mm
BS check 60 - 104:ZE87 3256,SD240.445,HD err= 0 002754, VD err= 3 998182
BS Circle check : angular err= 32.2723

RD,BD 1 0 0000
RD,FD 1 357 3509
RD,ZD 1:113.5031
MD,SD 1:29.826
RF,OP60,FP61,AR357 3509,ZE113.5031,SD29.826,HR5.0,--3 25 bd dlc
RD,FV 1:177.3503
RD,ZV 1:246.0913
MD,SD 1:29.826
RF,OP60,FP61,AR177 3503,ZE246 0913,SD29.826,HR5.0,--3 25 bd dlc
RD,BV 1 179.5959

Horizontal Angle Error: 0.0005
Zenith Angle Error: 0.0016
Slope Distance Error: 0.0
Horizontal Angle Error compares to the average: 0.0000
Zenith Angle Error compares to the average: 0.0000
Slope Distance Error compares to the average 0 0

OcPt	FsPt	HorzAngle	SlopeDist	ZenithAng	Desc
SS 60	61	AR 357°35'07"	29.826	113°50'39"	3 25 bd dlc

Note

OC,OP61,N 7659 816436,E 7602.228002,EL-159 683541,--3 25 bd dlc
OcPt BsPt Azi SetAzi
61 104 0°00'00"

Note

Fixed HR at Backsight:0 0 (0 0 + 0.0 Offset), Prism Const :0 0mm
OC,OP61,N 7659.816436,E 7602 228002,EL-159.683541,--3 25 bd dlc
OcPt BsPt Azi SetAzi
61 104 0°00'00"

Note

Fixed HR at Backsight 0.0 (0 0 + 0.0 Offset), Prism Const 0 0mm
BS check 61 - 104:ZE84.0727,SD214.09,HD err= -0 004178, VD err= 3 574709
BS Circle check . angular err= 54.1443

RD,BD 1 0.0007
RD,FD 1 262 3707
RD,ZD 1:70.0410
MD,SD 1:27.599
RF,OP61,FP62,AR262.3707,ZE70 0410,SD27.599,HR5.0,--ir 12 dn
RD,FV 1 82 3706
RD,ZV 1 289.5543
MD,SD 1.27 595
RF,OP61,FP62,AR82 3706,ZE289.5543,SD27 595,HR5 0,--ir 12 dn
RD,BV 1:180.0008

Horizontal Angle Error: 0 0002
Zenith Angle Error: 0.0007
Slope Distance Error: 0 004
Horizontal Angle Error compares to the average 0 0000
Zenith Angle Error compares to the average 0 0000
Slope Distance Error compares to the average: 0 0

OcPt	FsPt	HorzAngle	SlopeDist	ZenithAng	Desc
SS 61	62	AR 262°36'59"	27.597	70°04'14"	ir 12 dn

Note

RD,BD 1:0 0006
RD,FD 1:102 4154

RD,ZD 1:107.4848
MD,SD 1:31.851
RF,OP61,FP63,AR102 4154,ZE107 4848,SD31 851,HR5.0,--1r 7 dn
RD,FV 1:282.4139
RD,ZV 1:252.1105
MD,SD 1:31 851
RF,OP61,FP63,AR282 4139,ZE252 1105,SD31 851,HR5.0,--1r 7 dn
RD,BV 1:180.0021
Horizontal Angle Error 0 0030
Zenith Angle Error 0 0007
Slope Distance Error 0.0
Horizontal Angle Error compares to the average. 0 0000
Zenith Angle Error compares to the average. 0 0000
Slope Distance Error compares to the average: 0.0

OcPt	FsPt	HorzAngle	SlopeDist	ZenithAng	Desc
SS 61	63	AR 102°41'33"	31.851	107°48'52"	1r 7 dn

Note
RD,BD 1 0 0000
RD,FD 1 0 0000
RD,ZD 1
MD,SD 1
RF,OP61,FP,AR0.0000,ZE,SD,HR5.0,--
RD,FV 1:180 0000
RD,ZV 1.
MD,SD 1:
RF,OP61,FP,AR180.0000,ZE,SD,HR5.0,--
RD,BV 1:180.0000
Horizontal Angle Error 0 0000
Zenith Angle Error 0 0000

OcPt	FsPt	HorzAngle	SlopeDist	ZenithAng	Desc
SS 61	64	AR 54°56'51"	11 584	131°55'43"	10 w fir
SS 61	65	AR 54°56'52"	11 586	131°55'42"	10 w fir

Note
RD,BD 1 0.0000
RD,FD 1.311 2053
RD,ZD 1:96 1054
MD,SD 1:42.954
RF,OP61,FP66,AR311 2053,ZE96.1054,SD42 954,HR5 0,--7w fir
RD,FV 1:131 2043
RD,ZV 1 263 4856
MD,SD 1 42 954
RF,OP61,FP66,AR131.2043,ZE263.4856,SD42.954,HR5 0,--7w fir
RD,BV 1:179 5951
Horizontal Angle Error 0 0001
Zenith Angle Error 0 0010
Slope Distance Error 0.0
Horizontal Angle Error compares to the average: 0 0000
Zenith Angle Error compares to the average 0.0000
Slope Distance Error compares to the average 0 0

OcPt	FsPt	HorzAngle	SlopeDist	ZenithAng	Desc
SS 61	66	AR 311°20'53"	42.954	96°10'59"	7w fir

Note
OC,OP6,N 7908 199435,E 4911 013567,EL364.928194,--spike
OcPt BsPt Azi SetAzi
6 101 0°00'00"

Note

Fixed HR at Backsight:5 0 (5 0 + 0.0 Offset), Prism Const :0.0mm
OC,OP6,N 7908 199435,E 4911 013567,EL364.928194,--spike

OcPt	BsPt	Azi	SetAzi
6	101		0°00'00"

Note

Fixed HR at Backsight:5 0 (5.0 + 0.0 Offset), Prism Const :0.0mm
BS check 6 - 101 ZE91.4158,SD2102 321,HD err= 0.020081, VD err= -0 71534

BS Circle check angular err= 41 4345
OcPt BsPt Azi SetAzi
6 101 241°26'47"

Note

Fixed HR at Backsight:5 0 (5 0 + 0.0 Offset), Prism Const.:0.0mm
OC,OP6,N 7908 199435,E 4911 013567,EL364.928194,--spike

OcPt	BsPt	Azi	SetAzi
6	101		0°00'00"

Note

Fixed HR at Backsight:5 0 (5 0 + 0.0 Offset), Prism Const. 0.0mm
BS check 6 - 101 ZE91.4203,SD2102.325,HD err= 0 022572, VD err= -0.766398

BS Circle check angular err= 118.3322
OcPt BsPt Azi SetAzi
6 101 4°37'55"

Note

Fixed HR at Backsight 5 0 (5.0 + 0.0 Offset), Prism Const 0 0mm
OC,OP6,N 7908.199435,E 4911.013567,EL364 928194,--spike

OcPt	BsPt	Azi	SetAzi
6	101		0°00'00"

Note

Fixed HR at Backsight 5.0 (5.0 + 0.0 Offset), Prism Const .0 0mm
BS check 6 - 101 ZE91 4206,SD2102 321,HD err= 0 017669, VD err= -0 796843

BS Circle check angular err= 118 3302

RD,BD 1:359.5959

RD,FD 1:119.0039

RD,ZD 1:97.4749

MD,SD 1:261 834

RF,OP6,FP7,AR119 0039,ZE97 4749,SD261.834,HR5 0,--stone nw63

RD,FV 1 299 0026

RD,ZV 1 262 1207

MD,SD 1 261 834

RF,OP6,FP7,AR299.0026,ZE262.1207,SD261 834,HR5.0,--stone nw63

RD,BV 1:179.5950

Horizontal Angle Error: 0.0004

Zenith Angle Error: 0.0004

Slope Distance Error: 0 0

Horizontal Angle Error compares to the average 0.0000

Zenith Angle Error compares to the average: 0 0000

Slope Distance Error compares to the average 0.0

OcPt	FsPt	HorzAngle	SlopeDist	ZenithAng	Desc
TF 6	7	AR 119°00'38"	261 834	97°47'51"	stone nw63

Note

OC,OP7,N 7653 302669,E 4959 210729,EL329.405942,--stone nw63

OcPt	BsPt	Azi	SetAzi
7	6		0°00'00"

Note

Fixed HR at Backsight 5.0 (5.0 + 0 0 Offset), Prism Const 0 0mm

Backup to archive 46863050 Date: 08-06-2007 Time: 16 41 34

Data Collector Serial Number FS74A57479

Activating Total Station: Leica TPS Series [1105], COM1, 9600 baud, no parity
 Foresight Target:My Prism, HR 5.0 (5.0 + 0 0 Offset), Prism Const 0.0mm
 Data Collector Serial Number: FS74A57479
 Activating Total Station Leica TPS Series [1105], COM1, 9600 baud, no parity
 Foresight Target:My Prism, HR 5.0 (5.0 + 0 0 Offset), Prism Const 0.0mm
 Data Collector Serial Number: FS74A57479
 Activating Total Station Leica TPS Series [1105], COM1, 9600 baud, no parity
 Foresight Target:My Prism, HR 5.0 (5.0 + 0 0 Offset), Prism Const 0.0mm
 Data Collector Serial Number: FS74A57479
 Activating Total Station Leica TPS Series [1105], COM1, 9600 baud, no parity
 Foresight Target:My Prism, HR 5.0 (5.0 + 0 0 Offset), Prism Const 0.0mm
 Data Collector Serial Number: FS74A57479
 Activating Total Station Leica TPS Series [1105], COM1, 9600 baud, no parity
 Foresight Target:My Prism, HR 5.0 (5.0 + 0 0 Offset), Prism Const :0 0mm
 OC,OP7,N 7653 302669,E 4959.210729,EL329 405942,--stone nw63
 HR 5.0 (5 0 - 0.0 Offset)

InstHt RodHt
 5 000 5 000
 OcPt BsPt Azi SetAzi
 7 6 0°00'00"

Note
 Fixed HR at Backsight 0 0 (0 0 + 0.0 Offset), Prism Const :0 0mm
 BS check 7 - 6:ZE82.1349,SD261 816,HD err= -0.001052, VD err= 4.873176
 BS Circle check angular err= 51 5550
 RD,BD 1:359 5958
 RD,FD 1:142.1930
 RD,ZD 1:98 3622
 MD,SD 1:54 23
 RF,OP7,FP70,AR142.1930,ZE98.3622,SD54.23,HR5.0,--40 df stmp
 RD,FV 1:322.1928
 RD,ZV 1 261.2344
 MD,SD 1 54.228
 RF,OP7,FP70,AR322 1928,ZE261 2344,SD54 228,HR5.0,--40 df stmp
 RD,BV 1 180 0003

Horizontal Angle Error 0.0007
 Zenith Angle Error. 0 0006
 Slope Distance Error 0 002
 Horizontal Angle Error compares to the average 0.0000
 Zenith Angle Error compares to the average 0.0000
 Slope Distance Error compares to the average: 0.0

OcPt	FsPt	HorzAngle	SlopeDist	ZenithAng	Desc
SS 7	70	AR 142°19'29"	54 229	98°36'19"	40 df stmp

Note
 RD,BD 1 0 0000
 RD,FD 1 356 1223
 RD,ZD 1 82 5500
 MD,SD 1-26 362
 RF,OP7,FP71,AR356.1223,ZE82 5500,SD26.362,HR5 0,--1r 6 dn
 RD,FV 1:176.1221
 RD,ZV 1:277.0445
 MD,SD 1 26.362
 RF,OP7,FP71,AR176 1221,ZE277 0445,SD26 362,HR5.0,--1r 6 dn

RD,BV 1:179.5951
Horizontal Angle Error: 0 0007
Zenith Angle Error: 0 0015
Slope Distance Error 0.0
Horizontal Angle Error compares to the average: 0.0000
Zenith Angle Error compares to the average 0 0000
Slope Distance Error compares to the average: 0.0

OcPt	FsPt	HorzAngle	SlopeDist	ZenithAng	Desc
SS 7	71	AR 356°12'27"	26 362	82°55'08"	ir 6 dn

Note
RD,BD 1:0.0000
RD,FD 1:22 3909
RD,ZD 1:90 0700
MD,SD 1:32 945
RF,OP7,FP72,AR22.3909,ZE90.0700,SD32.945,HR5.0,--9 df
RD,FV 1:202 3905
RD,ZV 1:269 5246
MD,SD 1:32 944
RF,OP7,FP72,AR202 3905,ZE269.5246,SD32 944,HR5 0,--9 df
RD,BV 1.179 5959
Horizontal Angle Error: 0 0003
Zenith Angle Error 0 0014
Slope Distance Error: 0.001
Horizontal Angle Error compares to the average. 0.0000
Zenith Angle Error compares to the average 0 0000
Slope Distance Error compares to the average: 0.0

OcPt	FsPt	HorzAngle	SlopeDist	ZenithAng	Desc
SS 7	72	AR 22°39'08"	32 944	90°07'07"	9 df

Note
RD,BD 1:0 0000
RD,FD 1:169 0230
RD,ZD 1:98.5528
MD,SD 1 18 875
RF,OP7,FP73,AR169.0230,ZE98 5528,SD18 875,HR5.0,--ir 7 dn
RD,FV 1 349 0224
RD,ZV 1 261 0419
MD,SD 1 18 875
RF,OP7,FP73,AR349.0224,ZE261.0419,SD18.875,HR5 0,--ir 7 dn
RD,BV 1 180 0004
Horizontal Angle Error 0 0010
Zenith Angle Error 0 0013
Slope Distance Error 0.0
Horizontal Angle Error compares to the average 0 0000
Zenith Angle Error compares to the average 0 0000
Slope Distance Error compares to the average: 0.0

OcPt	FsPt	HorzAngle	SlopeDist	ZenithAng	Desc
SS 7	73	AR 169°02'25"	18 875	98°55'35"	ir 7 dn

Note
RD,BD 1 0 0003
RD,FD 1 101 4415
RD,ZD 1 109 3511
MD,SD 1 15 004
RF,OP7,FP74,AR101 4415,ZE109.3511,SD15 004,HR5 0,--10 df
RD,FV 1:281.4412
RD,ZV 1:250.2429
MD,SD 1:15 004

```

RF,OP7,FP74,AR281 4412,ZE250 2429,SD15 004,HR5 0,--10 df
RD,BV 1 179.5957
Horizontal Angle Error: 0 0003
Zenith Angle Error: 0 0020
Slope Distance Error 0.0
Horizontal Angle Error compares to the average 0 0000
Zenith Angle Error compares to the average: 0.0000
Slope Distance Error compares to the average 0.0
OcPt      FsPt      HorzAngle  SlopeDist ZenithAng  Desc
SS 7      74          AR 101°44'14"  15 004    109°35'21"  10 df
PntNo     Northing  Easting    Elevation  Desc
666      8973.0000  6153.0000  0 0000    1/4 calc
Note
OC,OP102,N 7995 730693,E 6274 789701,EL148 553532,--spike
OcPt      BsPt      Azi        SetAzi
102      101          0°00'00"
Note
Fixed HR at Backsight:0 0 (0 0 + 0.0 Offset), Prism Const 0 0mm
OC,OP102,N 7995 730693,E 6274.789701,EL148.553532,--spike
OcPt      BsPt      Azi        SetAzi
102      101          0°00'00"
Note
Fixed HR at Backsight 5 0 (5 0 + 0.0 Offset), Prism Const :0.0mm
OC,OP102,N 7995.730693,E 6274.789701,EL148 553532,--spike
OcPt      BsPt      Azi        SetAzi
102      101          0°00'00"
Note
Fixed HR at Backsight 5.0 (5.0 + 0.0 Offset), Prism Const .0.0mm
BS check 102 - 101:ZE83.0744,SD1289.712,HD err= 0.014926, VD err= -0.536695
BS Circle check angular err= 74 2940
RD,BD 1 0 0001
RD,FD 1 339 0633
RD,ZD 1 84.2525
MD,SD 1 984 785
RF,OP102,FP8,AR339 0633,ZE84 2525,SD984 785,HR5.0,--1/4 3/2 14-6
RD,FV 1:159.0620
RD,ZV 1:275.3438
MD,SD 1:984.782
RF,OP102,FP8,AR159 0620,ZE275.3438,SD984.782,HR5 0,--1/4 3/2 14-6
RD,BV 1 179.5958
Horizontal Angle Error 0 0010
Zenith Angle Error: 0.0003
Slope Distance Error: 0 003
Horizontal Angle Error compares to the average 0 0000
Zenith Angle Error compares to the average 0 0000
Slope Distance Error compares to the average: 0.0
OcPt      FsPt      HorzAngle  SlopeDist ZenithAng  Desc
TR 102     8          AR 339°06'27"  984 784    84°25'24"  1/4 3/2 14-6
Note
OC,OP8,N 8962 370437,E 6112.779157,EL244.254797,--1/4 3/2 14-6
OcPt      BsPt      Azi        SetAzi
8         102          0°00'00"
Note
Fixed HR at Backsight:5 0 (5 0 + 0 0 Offset), Prism Const. 0 0mm
OC,OP8,N 8962.370437,E 6112 779157,EL244 254797,--1/4 3/2 14-6
OcPt      BsPt      Azi        SetAzi

```

8 102 0°00'00"

Note

Fixed HR at Backsight 5.0 (5.0 + 0 0 Offset), Prism Const. 0.0mm
BS check 8 - 102.ZE95 3451,SD984.782,HD err= -0.008223, VD err= -0 068755
BS Circle check · angular err= 70 4416

	OcPt	FsPt	HorzAngle	SlopeDist	ZenithAng	Desc
SS 8	80		AR 142°03'18"	101 607	71°45'12"	22 oak
SS 8	81		AR 142°45'25"	102 867	71°34'33"	22 oak
SS 8	82		AR 35°06'58"	6.098	128°05'41"	23 df stmp
SS 8	83		AR 35°06'58"	6.100	128°05'40"	23 df stmp

Note

DP,PN83

	OcPt	FsPt	HorzAngle	SlopeDist	ZenithAng	Desc
SS 8	83		AR 23°31'31"	7.515	130°36'09"	23 df stmp
SS 8	84		AR 221°05'54"	42.580	81°11'40"	30 df stm[

Note

RD,BD 1:0.0000
RD,FD 1:9.2536
RD,ZD 1:117.5453
MD,SD 1:20 226
RF,OP8,FP85,AR9.2536,ZE117 5453,SD20.226,HR5 0,--10 df
RD,FV 1.189.2521
RD,ZV 1:242.0451
MD,SD 1:20 224
RF,OP8,FP85,AR189 2521,ZE242 0451,SD20 224,HR5 0,--10 df
RD,BV 1:179.5943
Horizontal Angle Error 0.0002
Zenith Angle Error: 0.0016
Slope Distance Error 0 002
Horizontal Angle Error compares to the average 0.0000
Zenith Angle Error compares to the average 0 0000
Slope Distance Error compares to the average: 0 0

	OcPt	FsPt	HorzAngle	SlopeDist	ZenithAng	Desc
SS 8	85		AR 9°25'37"	20 225	117°55'01"	10 df

Note

RD,BD 1 0 0000
RD,FD 1.257.3922
RD,ZD 1.94 3932
MD,SD 1.32 845
RF,OP8,FP86,AR257 3922,ZE94.3932,SD32 845,HR5 0,--ir 9 dn
RD,FV 1 77 3404
RD,ZV 1 265 2021
MD,SD 1 32 848
RF,OP8,FP86,AR77 3404,ZE265.2021,SD32.848,HR5.0,--ir 9 dn
RD,BV 1 179 5452
Horizontal Angle Error: 0.0010
Zenith Angle Error: 0.0007
Slope Distance Error 0 003
Horizontal Angle Error compares to the average 0.0000
Zenith Angle Error compares to the average 0.0000
Slope Distance Error compares to the average 0 0

	OcPt	FsPt	HorzAngle	SlopeDist	ZenithAng	Desc
SS 8	86		AR 257°39'17"	32 846	94°39'36"	ir 9 dn

Note

RD,BD 1 0 0000
RD,FD 1 101 1157

RD,ZD 1:85.3126
MD,SD 1:15.496
RF,OP8,FP87,AR101.1157,ZE85.3126,SD15 496,HR5 0,--ir 9 dn
RD,FV 1 281 1147
RD,ZV 1.274 2748
MD,SD 1:15.496
RF,OP8,FP87,AR281 1147,ZE274 2748,SD15 496,HR5 0,--ir 9 dn
RD,BV 1.179 5956

Horizontal Angle Error: 0 0006
Zenith Angle Error 0.0046
Slope Distance Error: 0 0
Horizontal Angle Error compares to the average 0 0000
Zenith Angle Error compares to the average 0 0000
Slope Distance Error compares to the average: 0 0

OcPt	FsPt	HorzAngle	SlopeDist	ZenithAng	Desc
SS 8	87	AR 101°11'54"	15 496	85°31'49"	ir 9 dn
PntNo	Northing	Easting	Elevation	Desc	
666	6322.3704	6112.7792	244.2548	Cogo	

Note
Data Collector Serial Number FS74A57479
Activating Total Station: Leica TPS Series [1105], COM1, 9600 baud, no parity
Foresight Target My Prism, HR:5 0 (5 0 + 0 0 Offset), Prism Const .0.0mm
Data Collector Serial Number FS74A57479
Activating Total Station Leica TPS Series [1105], COM1, 9600 baud, no parity
Foresight Target My Prism, HR:5.0 (5 0 + 0 0 Offset), Prism Const 0.0mm
OC,OP5,N 6673.318078,E 5530.017729,EL330 62956,--spike
HR 5.0 (5.0 + 0.0 Offset)

InstHt RodHt
5.000 5 000
OcPt BsPt Azi SetAzi
5 4 0°00'00"

Note
Fixed HR at Backsight 5.0 (5.0 + 0 0 Offset), Prism Const. 0.0mm
BS check 5 - 4 ZE103 0609,SD371 286,HD err= 0 004531, VD err= -0.185847
BS Circle check : angular err= 179 1848
BS check 5 - 4.ZE103.0608,SD371.286,HD err= 0 004939, VD err= -0 184094
BS Circle check angular err= 0 0010

RD,BD 1.359 5959
RD,FD 1:258.5516
RD,ZD 1.89 4246
MD,SD 1 132 029
RF,OP5,FP10,AR258 5516,ZE89 4246,SD132 029,HR5.0,--spike
RD,FV 1:78.5513
RD,ZV 1 270 1716
MD,SD 1 132 029
RF,OP5,FP10,AR78 5513,ZE270 1716,SD132 029,HR5 0,--spike
RD,BV 1 179 5954

Horizontal Angle Error: 0 0002
Zenith Angle Error 0.0002
Slope Distance Error: 0 0
Horizontal Angle Error compares to the average 0 0000
Zenith Angle Error compares to the average: 0.0000
Slope Distance Error compares to the average 0 0

OcPt	FsPt	HorzAngle	SlopeDist	ZenithAng	Desc
TR 5	10	AR 258°55'18"	132.029	89°42'45"	spike

Note

OC,OP10,N 6579 980569,E 5623.395068,EL331 292055,--spike

OcPt BsPt Azi SetAzi
10 5 0°00'00"

Note
Fixed HR at Backsight:5 0 (5 0 + 0.0 Offset), Prism Const.:0 0mm

PntNo Northing Easting Elevation Desc
667 6322 6609 6151.9429 244.2548 Cogo

Note
OC,OP10,N 6579.980569,E 5623 395068,EL331.292055,--spike

OcPt BsPt Azi SetAzi
10 5 0°00'00"

Note
Fixed HR at Backsight 5.0 (5.0 + 0.0 Offset), Prism Const .0 0mm
BS check 10 - 5 ZE90 1722,SD132.029,HD err= -0 000023, VD err= -0.004481
BS Circle check : angular err= 9 2300

RD,BD 1:0 0001
RD,FD 1:148.4347
RD,ZD 1 90 1945
MD,SD 1.524 214
RF,OP10,FP11,AR148 4347,ZE90.1945,SD524 214,HR5.0,--h/t
RD,FV 1:328.4356
RD,ZV 1 269 4020
MD,SD 1.524 214
RF,OP10,FP11,AR328 4356,ZE269.4020,SD524.214,HR5.0,--h/t
RD,BV 1:180.0010

Horizontal Angle Error. 0 0000
Zenith Angle Error: 0.0005
Slope Distance Error 0 0
Horizontal Angle Error compares to the average: 0 0000
Zenith Angle Error compares to the average: 0.0000
Slope Distance Error compares to the average 0 0

TR OcPt FsPt HorzAngle SlopeDist ZenithAng Desc
10 11 AR 148°43'46" 524 214 90°19'43" h/t

Note
OC,OP11,N 6455.675658,E 6132.649008,EL328 286794,--h/t

OcPt BsPt Azi SetAzi
11 10 0°00'00"

Note
Fixed HR at Backsight 5.0 (5 0 + 0 0 Offset), Prism Const 0 0mm
OC,OP11,N 6455.675658,E 6132 649008,EL328 286794,--h/t

OcPt BsPt Azi SetAzi
11 10 0°00'00"

Note
Fixed HR at Backsight.5 0 (5 0 + 0.0 Offset), Prism Const :0 0mm
BS check 11 - 10:ZE89 4017,SD524 21,HD err= -0 004007, VD err= 0 001248
BS Circle check angular err= 29 5013

OcPt BsPt Azi SetAzi
11 10 111°57'13"

Note
Fixed HR at Backsight 5.0 (5.0 + 0 0 Offset), Prism Const 0.0mm
OC,OP11,N 6455.675658,E 6132 649008,EL328.286794,--h/t

OcPt BsPt Azi SetAzi
11 10 0°00'00"

Note
Fixed HR at Backsight.5 0 (5 0 + 0.0 Offset), Prism Const 0 0mm
BS check 11 - 10:ZE89 4638,SD524.201,HD err= -0.008348, VD err= -0.967065

BS Circle check angular err= 111.5821
 RD,BD 1:0 0000
 RD,FD 1:248 3552
 RD,ZD 1:94.2707
 MD,SD 1 120 982
 RF,OP11,FP,AR248.3552,ZE94 2707,SD120 982,HR5.0,--
 RD,FV 1 68 3546
 RD,ZV 1:265.3242
 MD,SD 1:120.982
 RF,OP11,FP,AR68 3546,ZE265.3242,SD120.982,HR5 0,--
 RD,BV 1:180 0000
 Horizontal Angle Error: 0.0000
 Zenith Angle Error 0.0000
 Slope Distance Error: 0 0
 RD,BD 1:0.0001
 RD,FD 1:248.3551
 RD,ZD 1:94.2659
 MD,SD 1 120 982
 RF,OP11,FP12,AR248 3551,ZE94 2659,SD120.982,HR5 0,--spike
 RD,FV 1.68 3555
 RD,ZV 1:265.3252
 MD,SD 1:120.982
 RF,OP11,FP12,AR68.3555,ZE265.3252,SD120 982,HR5.0,--spike
 RD,BV 1 179 5955

Horizontal Angle Error 0.0010
 Zenith Angle Error 0 0009
 Slope Distance Error 0.0
 Horizontal Angle Error compares to the average: 0 0000
 Zenith Angle Error compares to the average: 0.0000
 Slope Distance Error compares to the average 0 0

OcPt	FsPt	HorzAngle	SlopeDist	ZenithAng	Desc
TR 11	12	AR 248°35'55"	120 982	94°27'04"	spike

Note
 OC,OP12,N 6336 141646,E 6148 777005,EL318 897864,--spike

OcPt	BsPt	Azi	SetAzi
12	11		0°00'00"

Note
 Fixed HR at Backsight:5.0 (5.0 + 0 0 Offset), Prism Const :0 0mm

OC,OP12,N 6336 141646,E 6148 777005,EL318 897864,--spike

OcPt	BsPt	Azi	SetAzi
12	11		0°00'00"

Note
 Fixed HR at Backsight:5 0 (5 0 + 0 0 Offset), Prism Const :0 0mm

BS check 12 - 11:ZE85.3251,SD120 982,HD err= -0 00025, VD err= 0 003216

BS Circle check angular err= 154.2255

RD,BD 1:0 0005
 RD,FD 1:159 2624
 RD,ZD 1 88 5228
 MD,SD 1:14 489
 RF,OP12,FP13,AR159.2624,ZE88.5228,SD14.489,HR5 0,--58 df snag bt
 RD,FV 1 339 2639
 RD,ZV 1 271 0722
 MD,SD 1 14 488
 RF,OP12,FP13,AR339 2639,ZE271.0722,SD14 488,HR5 0,--58 df snag bt
 RD,BV 1.180 0002
 Horizontal Angle Error. 0.0018

Zenith Angle Error: 0.0010
Slope Distance Error. 0 001
Horizontal Angle Error compares to the average 0.0000
Zenith Angle Error compares to the average 0 0000
Slope Distance Error compares to the average 0 0

OcPt	FsPt	HorzAngle	SlopeDist	ZenithAng	Desc
SS 12	13	AR 159°26'28"	14 489	88°52'33"	58 df snag bt
PntNo	Northing	Easting	Elevation	Desc	
14	6324 3139	6154.6984	319 1821	Cogo	

Note
OC,OP12,N 6336 141646,E 6148.777005,EL318.897864,--spike

OcPt	BsPt	Azi	SetAzi
12	11		0°00'00"

Note
Fixed HR at Backsight:5 0 (5.0 + 0 0 Offset), Prism Const. 0.0mm
BS check 12 - 11:ZE85 3255,SD120 982,HD err= -0.000068, VD err= 0.000877
BS Circle check angular err= 0 0033

OcPt	FsPt	HorzAngle	SlopeDist	ZenithAng	Desc
SS 12	15	AR 0°00'00"	120 982	85°32'55"	1r

Note
RD,BD 1:359.5959
RD,FD 1 135 5940
RD,ZD 1 81 5728
MD,SD 1:47 717
RF,OP12,FP15,AR135.5940,ZE81 5728,SD47.717,HR5.0,--1r
RD,FV 1:315.5953
RD,ZV 1:278 0212
MD,SD 1:47 717
RF,OP12,FP15,AR315 5953,ZE278 0212,SD47.717,HR5.0,--1r
RD,BV 1:180.0034

Horizontal Angle Error 0.0022
Zenith Angle Error 0 0020
Slope Distance Error 0.0
Horizontal Angle Error compares to the average: 0 0000
Zenith Angle Error compares to the average: 0.0000
Slope Distance Error compares to the average 0 0
DP,PN15

OcPt	FsPt	HorzAngle	SlopeDist	ZenithAng	Desc
SS 12	15	AR 135°59'30"	47 717	81°57'38"	1r

Note
RD,BD 1:0 0000
RD,FD 1 208 3958
RD,ZD 1 102 0554
MD,SD 1:37 441
RF,OP12,FP16,AR208.3958,ZE102 0554,SD37 441,HR5.0,--1r
RD,FV 1 28 4000
RD,ZV 1 257 5353
MD,SD 1:37.441
RF,OP12,FP16,AR28 4000,ZE257 5353,SD37 441,HR5.0,--1r
RD,BV 1 179 5943

Horizontal Angle Error 0 0019
Zenith Angle Error: 0 0013
Slope Distance Error 0 0
Horizontal Angle Error compares to the average: 0.0000
Zenith Angle Error compares to the average 0 0000
Slope Distance Error compares to the average: 0.0

OcPt	FsPt	HorzAngle	SlopeDist	ZenithAng	Desc
SS 12	16	AR 208°40'08"	37 441	102°06'01"	1r

Note

RD,BD 1:359.5959
 RD,FD 1:315.0727
 RD,ZD 1:101.4529
 MD,SD 1.35 893
 RF,OP12,FP17,AR315.0727,ZE101.4529,SD35.893,HR5 0,--1r
 RD,FV 1:135.0724
 RD,ZV 1:258 1424
 MD,SD 1.35 893
 RF,OP12,FP17,AR135.0724,ZE258.1424,SD35.893,HR5.0,--1r
 RD,BV 1:180.0002
 Horizontal Angle Error: 0.0006
 Zenith Angle Error: 0 0007
 Slope Distance Error: 0.0
 Horizontal Angle Error compares to the average 0.0000
 Zenith Angle Error compares to the average 0 0000
 Slope Distance Error compares to the average: 0.0

OcPt	FsPt	HorzAngle	SlopeDist	ZenithAng	Desc
SS 12	17	AR 315°07'25"	35 893	101°45'33"	1r

Note

RD,BD 1:0 0000
 RD,FD 1:36 4435
 RD,ZD 1:82.0405
 MD,SD 1:48.485
 RF,OP12,FP18,AR36.4435,ZE82.0405,SD48.485,HR5 0,--1r
 RD,FV 1:216.4436
 RD,ZV 1:277 5549
 MD,SD 1:48.485
 RF,OP12,FP18,AR216 4436,ZE277 5549,SD48 485,HR5.0,--1r
 RD,BV 1.180 0004
 Horizontal Angle Error 0.0003
 Zenith Angle Error 0 0006
 Slope Distance Error: 0 0
 Horizontal Angle Error compares to the average 0.0000
 Zenith Angle Error compares to the average 0 0000
 Slope Distance Error compares to the average: 0.0

OcPt	FsPt	HorzAngle	SlopeDist	ZenithAng	Desc
SS 12	18	AR 36°44'34"	48.485	82°04'08"	1r

Note

Foresight Target My Reflectorless, HR:0.0 (0 0 + 0.0 Offset), Prism Const. 0 0mm
 HR:0 0 (0 0 - 0 0 Offset)
 InstHt RodHt
 5.000 0 000

OcPt	FsPt	HorzAngle	SlopeDist	ZenithAng	Desc
SS 12	19	AR 147°58'42"	29 227	90°50'06"	8 df
SS 12	20	AR 187°50'25"	23 916	104°02'33"	12 df
OcPt	BsPt	Azi	SetAzi		
12	11		198°54'37"		

Note

Fixed HR at Backsight 5.0 (5.0 + 0.0 Offset), Prism Const 0 0mm
 OC,OP12,N 6336 141646,E 6148.777005,EL318 897864,--spike
 OcPt BsPt Azi SetAzi
 12 11 0°00'00"

Note

Fixed HR at Backsight 5 0 (5 0 + 0.0 Offset), Prism Const .0 0mm
BS check 12 - 11:ZE274 2711,SD121.101,HD err= 0.118299, VD err= 0 013625
BS Circle check angular err= 18 5403
OcPt BsPt Azi SetAzi
12 11 18°54'37"
Note
Fixed HR at Backsight:5.0 (5.0 + 0 0 Offset), Prism Const 0.0mm

CORNER RESEARCH

AUTHOR: [Dotted Box] CORNER NO. 146500600
TOWNSHIP: 14-6 DATE 8-1-07
CORNER: SW SEC 2

SURVEYS:

0) SEE ATTACHED

- 1)
- 2)
- 3)
- 4)
- 5)
- 6)
- 7)
- 8)
- 9)
- 10)
- 11)
- 12)
- 13)
- 14)
- 15)
- 16)

ANDREW PORTER SURVEYS:

SURVEY FIELD BOOKS: 24-4, 24-39, 30-1, 81-16, 81-39, 97-37

GALLOWAY HARDCOPIES: SEE ATTACHED

SUBDIVISIONS: NONE

PARTITION'S: NONE

COUNTY ROADS: NONE

OTHER ROADS AND HWY'S: NONE

CORNER REST. BK1: NONE

OTHER RESTORATIONS: NONE

BPA: NONE

RAILROADS: NONE

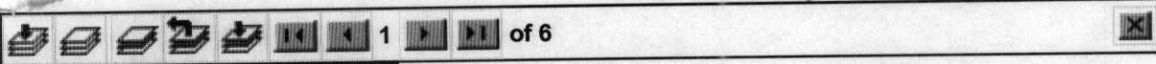
GLO NOTES:

MISC. RECORDS:

COMMENTS:

GEORGE SMITH DLC 63.

146500600



DocNumber	Name	Type
CS307	CS307	SURVEY
G14600001	G14600001	GALLOWAY
G14600002	G14600002	GALLOWAY
G14600003	G14600003	GALLOWAY
G14600005	G14600005	GALLOWAY
G14600006	G14600006	GALLOWAY