

146837040

CORNER FILE TRACKING

H:\Survey\Corners\Misc\Filetrac2.doc
06/15/2003

CORNER NUMBER
146837040

STEP	HISTORY()	RESTORATION()
Form Prepared, DB	10/23/07	11/2/07
Field Inspection, DB	10/26/07	10/26/07
Form Checked, DB	11/20/07	11/20/07
Form Edited, DB	11/21/07	11/21/07
Form Signed, DB	11/26/07	11/26/07
Counter Index	11/2/07	11/2/07
GIS Index	11/2/07	11/2/07
Authorize Payment, DB	—	—
Archive Digital Files	11/27/07	11/27/07
Collect Documents	N/A	N/A
Scanned	11-23-07	11-23-07
Copy For Filming	11/27/07	11/27/07
Filed, DB	6/10/08	6/10/08
Finish index (count unit)	10/26/07	10/26/07
Filmed (Archived), DB	6/10/08	6/10/08
Document No's to Andrew	11/27/07	11/27/07

(DB) = Entry needed in database (Access).

COMMENTS:

DATE 10/23/2007TOWNSHIP 14 SOUTH, RANGE 06 WEST, WILLAMETTE MERIDIAN; SECTION 01 CORNER N/A
DONATION LAND CLAIM JOHN LLOYD NO. 37 CORNER NORTHWEST**COMMON CORNER(S):**

NONE

RECORDS (INFORMATION IN *BOLD ITALICS* IS COUNTY STAFFS' INTERPRETATION OF THE RECORD)

BASED ON EXTENSIVE RESEARCH AND RECOVERY OF EVIDENCE, THIS OFFICE HAS DETERMINED THAT MOST GENERAL LAND OFFICE SURVEYORS MEASURED TO THE FACE OF BEARING TREES.

- [01] GENERAL LAND OFFICE (GLO) NOTES BY DENNIS HATHORN, D.S., DATED FEBRUARY 15, 1854. *SET A POST. MARKED A 15" W. OAK N271/2°E 318 LKS. (209.88 FT.) AND A 24" W. OAK S71/2°E 514 LKS. (339.24 FT.).*
- [02] COUNTY SURVEY NO. 182 (OLD NO. 82) FIELD NOTES (BOOK 6, PAGE 10) BY F. M. WILKES, C.S., DATED JULY 21, 1910. *FOUND AN 18"x16"x10" STONE FOR SUPPOSED CORNER.*
- [03] BENTON COUNTY MAPS NO. 14-6-00001, 00002 AND 00003, NO DATE OR DRAFTSMAN GIVEN. *STONE 16"x10"x18"*.
- [04] COUNTY SURVEY NO. 8098 BY NORMAN SPRINGER, P.L.S., DATED JANUARY 15, 1988. *FOUND A 22" OAK STUMP (GLO BT) N271/2°E 318 LKS. (209.88 FT.), WITH AXE MARKS. FOUND A 2" STEEL TUBE S65°49'E 39.88 FT.*
- [05] PARTITION PLAT NO. 93-17 BY JIM PETERSON, P.L.S., DATED MARCH 8, 1993. *THE POSITION OF THIS CORNER WAS COMPUTED BY C.S. 8098 FROM A FOUND BEARING TREE AND REFERENCED TO A STEEL TUBE. THE BEARING TREE HAS BEEN DESTROYED AND THE STEEL TUBE HAS BEEN DISTURBED. RECOMPUTED THIS CORNER POSITION WITH REFERENCE TO THE CORNER TIES TO THE NORTH AND SOUTH AS PER 8098.*

NOTES:

THIS IS A MICROSOFT WORD 2003 DOCUMENT NAMED "46837040" CREATED FROM A BOILER PLATE DOCUMENT NAMED "HISTORY", WHICH HAS A STYLESHEET NAMED "CORNER" ATTACHED TO IT.

FIRM/AGENCY: BENTON COUNTY SURVEYOR'S OFFICE
ADDRESS: 360 S.W. AVERY AVE. CORVALLIS OR 97333; PH. 766-6821
RESEARCH BY: BERNARD S. ALTENBACH, ENGINEER/SURVEY TECH.
DATA ENTRY BY: SAME

BENTON COUNTY CORNER RESTORATION FORM, PAGE 1 OF 2, 146837040R1

SEE CORNER HISTORY FORM FOR RECORDS ETC.

CORNER RESTORATION FIELD BOOK NUMBER 26 PAGE(S) 11 DATE 10/26/2007
TOWNSHIP 14 SOUTH, RANGE 6 WEST, WILLAMETTE MERIDIAN; SECTION 1 CORNER NONE
DONATION LAND CLAIM JOHN LLOYD NO. 37 CORNER NORTHWEST
CONDITION REPORT ; REFERENCED OUT ; RENEWED ; SURVEYED IN XX

LOCATION AND COMMENTS:

CORNER IS LOCATED IN THE APPROXIMATE CENTER OF AS TRAVELED BRUCE ROAD (C.R. NO. 35220). TO REACH CORNER FROM THE JUNCTION OF DAWSON AND BELLFOUNTAIN ROADS, TRAVEL NORTHERLY ON BELLFOUNTAIN ROAD FOR 0.70 MILES; THEN BEAR RIGHT (STRAIGHT) ON BRUCE ROAD FOR 0.75 MILES TO CORNER. CORNER MAY BE OKAY FOR PREMARKING BUT POOR FOR GPS CONTROL.

MONUMENTS AND ACCESSORIES FOUND (CONDITION AND SOURCE):

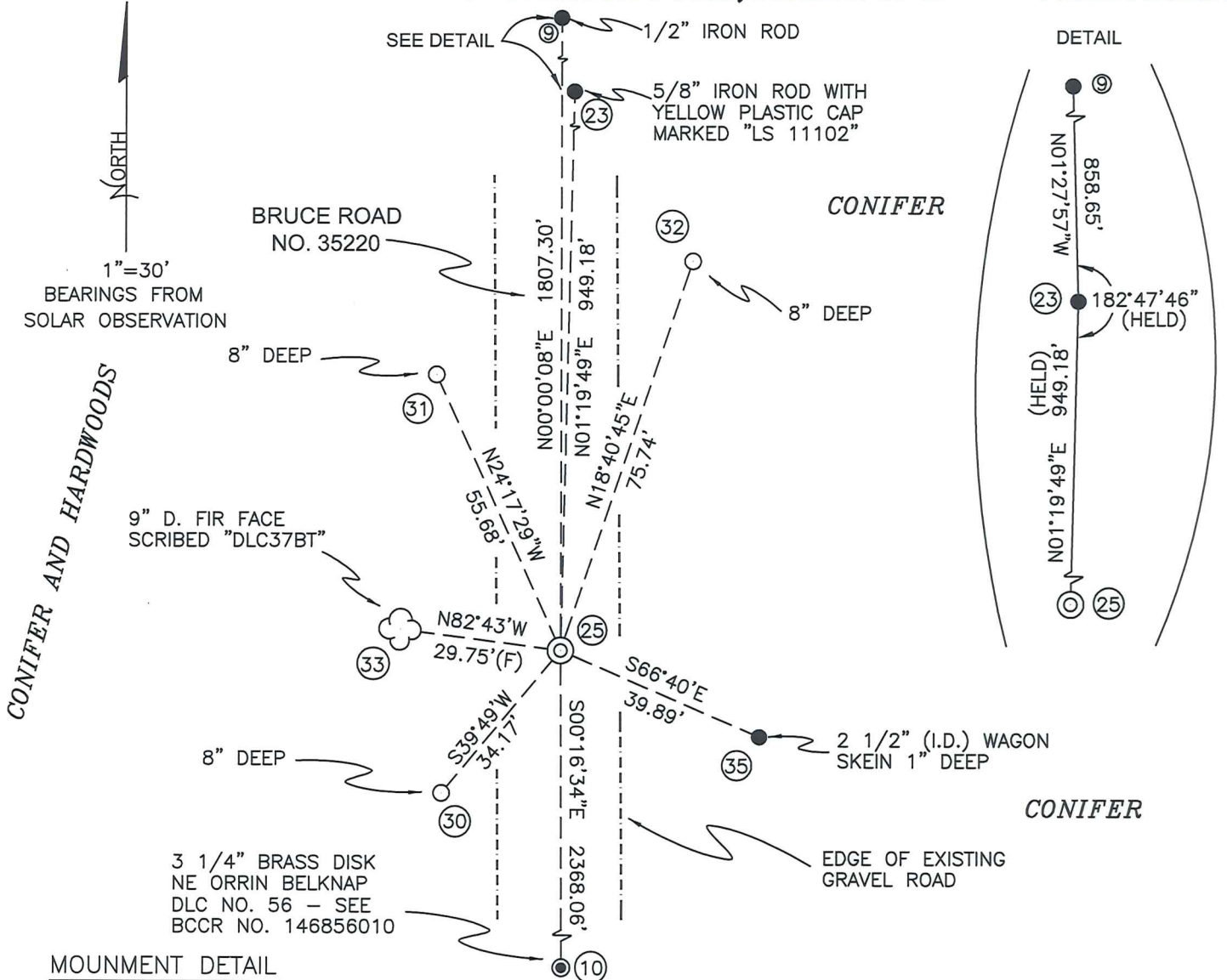
1. FOUND 3 1/4" BRASS DISK, S00°16'34"E, 2368.06 FEET, THE NORTHEAST CORNER OF THE ORRIN BELKNAP DLC NO. 56 (SEE CORNER RESTORATION NO. 146856010).
(3/4" PIPE, S0°20'E, 2366.63 FEET PER RECORD [03]).
(3/4" PIPE, S0°15'15"E, 2368.25 FEET PER RECORD [04]).
(3/4" PIPE, S0°15'13"E, 2368.25 FEET PER RECORD [05]).
2. FOUND 1/2" IRON ROD, 12" BELOW GROUND LEVEL, N00°00'08"E, 1807.30 FEET.
(SET OAK STAKE, N00°05'13"W, 1806.68 FEET [CALCULATED] PER RECORD [02]).
(OAK STAKE, NORTH, 1806.68 FEET PER RECORD [03]).
(FOUND 1/2" IRON ROD, N00°01'36"E, 1807.33 FEET PER RECORD [04]).
(FOUND 1/2" IRON ROD, N00°01'38"E, 1807.33 FEET PER RECORD [05]).
3. FOUND 2 1/2" INSIDE DIAMETER WAGON SKEIN, FIRMLY SET IN PLUMB POSITION, S66°40'E, 39.89 FEET AND 1" BELOW GROUND LEVEL.
(FOUND 2" STEEL TUBE, S69°49'E, 39.88 FEET PER RECORD [04]).
(FOUND STEEL TUBE DISTURBED PER RECORD [05]).
4. FOUND 5/8" IRON ROD WITH YELLOW PLASTIC CAP MARKED "LS 1102", 1" BELOW GROUND LEVEL, N01°19'49"E, 949.18 FEET.
(SET 5/8" X 30" IRON ROD WITH YELLOW PLASTIC CAP MARKED "LS 1102", N01°21'17"E, 949.18 FEET [CALCULATED] PER RECORD [04]).

MONUMENT SET (PROCEDURES AND DESCRIPTION):

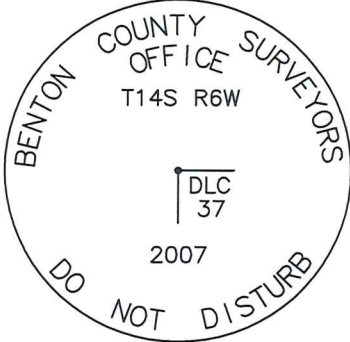
ORIGINAL GLO MONUMENT AND STONE FIRST NOTED IN RECORD [02] ARE BOTH MISSING. BOTH GLO BEARING TREES ARE ALSO MISSING. THE NORTHEAST GLO BEARING TREE STUMP FOUND IN RECORD [04] WAS DESTROYED APPROXIMATELY 18 YEARS AGO WHEN THE LAND WAS CLEARED AND REPLANTED WITH D. FIR.

WE HAVE DETERMINED THIS CORNER TO BE OBLITERATED. C.S. 8098 COMPUTED THE POSITION OF THE SUBJECT CORNER FROM THE RECOVERED STUMP OF THE NORTHEAST GLO BEARING TREE. WE COMPUTED THE CORNER POSITION WITH REFERENCE TO MONUMENT TIES TO THE NORTH OF THE SUBJECT CORNER PER SAID C.S. 8098. SEE DETAIL OF THIS RESOLUTION ON PAGE 2 OF 2. THIS POSITION FITS NICELY WITH RECORDS [02] – [04]. APPLYING A GRANT BOUNDARY SOLUTION TO C.S. 8098, USING THE NORTHEAST CORNER OF THE ORRIN BELKNAP DLC NO. 56 AND THE 1/2" IRON ROD AT THE NORTHWEST CORNER OF SAID C.S.8098 IS WITHIN 0.08 FEET OF OUR FINAL CALCULATED POSITION.

AT THE CALCULATED POSITION, WE SET A 2" X 31 1/2" GALVANIZED IRON PIPE WITH A 3 1/4" BRASS DISK CONCRETED IN THE TOP, 9" BELOW ROAD SURFACE AND MARKED AS SHOWN ON PAGE 2 OF 2.



MONUMENT DETAIL



3 1/4" BRASS DISK

LEGEND

- SET 5/8" X 30" REBAR WITH YELLOW PLASTIC CAP MKD "BENTON COUNTY SURVEYOR"
- FOUND MONUMENT AS NOTED.
- (F) MEASUREMENT TO FACE
- ⊙ GOVERNMENT MONUMENT SET AS SHOWN
- ⊙ GOVERNMENT MONUMENT FOUND AS SHOWN
- ☼ BEARING TREE AS NOTED
- BCCR BENTON COUNTY CORNER RESSTORATION
- I.D. INSIDE DIAMETER
- () HELD RECORD DATA PER C.S. 8098

NEW ACCESSORIES:

1. SET REBAR (SEE LEGEND) 8" BELOW GROUND LEVEL N18°40'45"E, 75.74 FEET.
2. SET REBAR (SEE LEGEND) 8" BELOW GROUND LEVEL S39°49'W, 34.17 FEET.
3. SET REBAR (SEE LEGEND) 7" BELOW GROUND LEVEL N24°17'29"W, 55.68 FEET.
4. 9" D. FIR FACE SCRIBED "DLC37BT" N82°43'W, 29.75 FEET TO FACE. SET ALUMUNUM NAIL AND BRASS WASHER BELOW SCRIBING FOR DISTANCE AND ANGLE MEASUREMENT.

NOTES:

COMPASS DECLINATION IS 20° EAST. ALL MEASURED DISTANCES AND BEARINGS ARE TO THE CENTER OF THE OBJECT, UNLESS OTHERWISE NOTED. ALL BEARING TREES ARE PAINTED AND HAVE A B.T. TAG ATTACHED, FACING THE CORNER UNLESS OTHERWISE NOTED. ALL NEW BEARING TREES HAVE A BRASS WASHER (STAMPED "BENTON COUNTY SURVEYOR") ATTACHED BY AN ALUMINUM NAIL TO THE FACE, BELOW THE "BT" FOR DISTANCE AND ANGLE MEASUREMENT UNLESS OTHERWISE NOTED. THE DRAWING IS FROM AUTOCAD RELEASE 2008.

THIS RESTORATION WAS PERFORMED AT THE DIRECTION AND APPROVAL OF THE BENTON COUNTY SURVEYOR. MD

REGISTERED
PROFESSIONAL
LAND SURVEYOR

FIRM/AGENCY: BENTON COUNTY SURVEYOR'S OFFICE
 ADDRESS: 360 S.W. AVERY AVE. CORVALLIS OR. 97333; PH. 766-6821
 PRESENT: DAVID M. DEAN, P.L.S. AND BERNIE ALTENBAVH, SURVEY TECH.
 EQUIPMENT: LEICA TCR 1105 WITH TDS ON BOARD

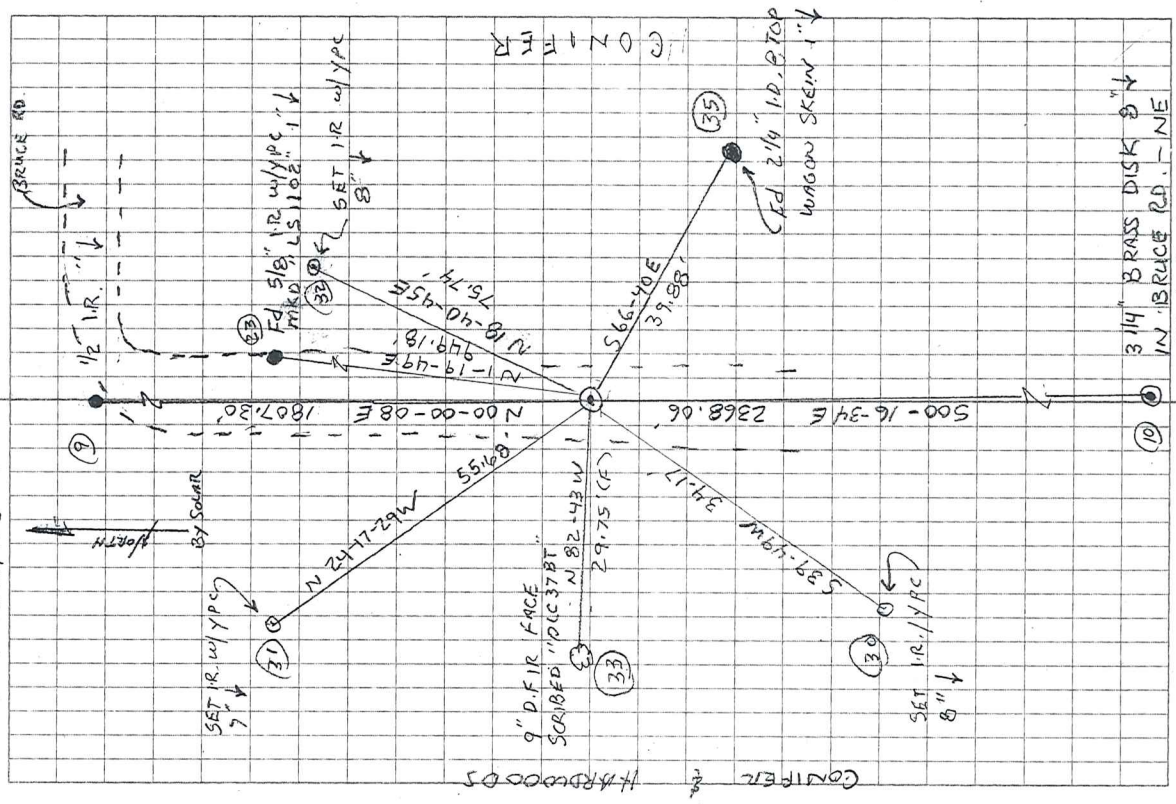
11/26/07 David M. Dean

OREGON
JULY 13, 1984
DAVID M. DEAN
2090

RENEWAL DATE: 12/31/07

10/26/07 26/11
 D. DEAN
 B. ALTENBACH

CLEAR, MILD, WINDY
 58°F (AM), 29.8"Hg
 LEICA TCR1105/TDS



ORRIN BELKNAP DLC 56
 (SEE PG. 10 THIS BK)

146837040

REMONUMENTING NW JOHN LLOYD

DLC No. 37 T145, R6W

ASLO MON. AND ACCESSORIES ARE MISSING.

STONE FIRST MENTIONED IN C.S. NO. 182 IS MISSING.

POSITION OF CORNER CALCULATED FROM

C.S. NO. 8098 WHICH FOUND 1 GLO

ACCESSORY (22" OAK STUMP) w/ AXE MARKS.

POSITION CALC. BY HOLDING 1/2" IR @

NW COR CS 8098 AND 5/8" IR/YPC

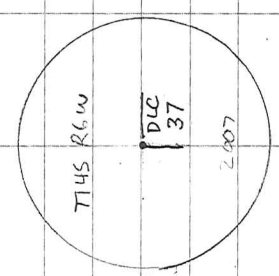
S'LY ON ELY R/W USING RECORD DATA

PER CS 8098 TO CALC. POSITION. AT CALC

POSITION SET 2" X 3 1/2" G.I.P. w/ 3/4" BRASS

DISK CONG. IN TOP 9" BELOW ROAD SURFACE

AND MKD AS SHOWN.



3 1/4" BRASS DISK