

CORNER FILE TRACKING

H:\Survey\Corners\Misc\Filetrac2.doc
06/15/2003

CORNER NUMBER
146844080

STEP	HISTORY()	RESTORATION()
Form Prepared, DB	5/10/07	5/11/07
Field Inspection, DB	5/10/07	5/10/07
Form Checked, DB	5/22/07	5/22/07
Form Edited, DB	5/23/07	5/23/07
Form Signed, DB	5/23/07	5/23/07
Counter Index	5/11/07	5/11/07
GIS Index	5/11/07	5/11/07
Authorize Payment, DB	—	—
Archive Digital Files	5/23/07	5/23/07
Collect Documents	5/11/07	5/11/07
Scanned	6/5/07	6/5/07
Copy For Filming	5/23/07	5/23/07
Filed, DB		
Finish index (count unit)	5/10/07	5/10/07
Filmed (Archived), DB		
Document No's to Andrew		

(DB) = Entry needed in database (Access).

COMMENTS:

DATE 05/10/2007TOWNSHIP 14 SOUTH, RANGE 06 WEST, WILLAMETTE MERIDIAN; SECTION 35 CORNER N/A
DONATION LAND CLAIM JEREMIAH STARR NO. 44 CORNER N-NORTHWESTCOMMON CORNER(S):

NONE

RECORDS (INFORMATION IN BOLD ITALICS IS COUNTY STAFFS' INTERPRETATION OF THE RECORD)

BASED ON EXTENSIVE RESEARCH AND RECOVERY OF EVIDENCE, THIS OFFICE HAS DETERMINED THAT MOST GENERAL LAND OFFICE SURVEYORS MEASURED TO THE FACE OF BEARING TREES

- [01] GENERAL LAND OFFICE (GLO) NOTES BY D HATHORN, D S , DATED FEBRUARY 3, 1855 SET A POST. MARKED A 24" OAK N58°W 96 LKS. (63.36FT.).
- [02] COUNTY SURVEY NO 117 (OLD NO 40) FIELD NOTES (BOOK 3, PAGE 41) BY F M WILKES, C S , NO DATE GIVEN SET AN OAK STAKE. FOUND ONE TREE (GLO BT) STANDING. MARKED A 12" MADRONE S26°30'E 27.60 FT. AND A 36" OAK S20°W 46.00 FT.
- [03] CORNER RESTORATION BOOK NO 1, PAGE 49 BY F M WILKES, C S , NO DATE GIVEN SET A 3"X3"X30" OAK STAKE. FOUND ONE BT (GLO BT) STANDING AND OLD STAKE HOLE. MARKED A 12" MADRONE S26°30'E 27.60 FT. AND A 36" OAK S20°W 46.00 FT.
- [04] CORNER RESTORATION NO 2428 TRANSCRIBED FROM RECORD [03] AND MAY CONTAIN ERRORS AND/OR OMISSIONS.
- [05] COUNTY SURVEY NO 8802 BY TED LANGTON, P L S , DATED FEBRUARY 16, 1994 SET A 5/8"X30" REBAR WITH A RED PLASTIC CAP. FOUND A 26" MADRONE (CSBT) S26°30'E 27.60 FT., WITH A HEALED FACE AND A 36" OAK (CSBT) S20°W 46.00 FT., WITH HEALED FACE. MARKED AN 8" D. FIR S8°W 10.30 FT., SCRIBED "NNWDL44" ABOVE "BT" AND A 6" D. FIR S72°W 2.9 FT., SCRIBED "NNWDL44" ABOVE "BT".

NOTES:

THIS IS A MICROSOFT WORD 2000 DOCUMENT NAMED "46844080" CREATED FROM A BOILER PLATE DOCUMENT NAMED "HISTORY", WHICH HAS A STYLESHEET NAMED "CORNER" ATTACHED TO IT

FIRM/AGENCY: BENTON COUNTY SURVEYOR'S OFFICE
ADDRESS: 360 S W AVERY AVE CORVALLIS OR 97333, PH 766-6821
RESEARCH BY: BERNARD S ALTENBACH, ENGINEER/SURVEY TECH
DATA ENTRY BY: SAME

BENTON COUNTY CORNER RESTORATION FORM, PAGE 1 OF 2, 146844080R2**SEE CORNER HISTORY FORM FOR RECORDS ETC.**

CORNER RESTORATION FIELD BOOK NUMBER 25 PAGE(S) 30 DATE 05/10/2007
TOWNSHIP 14 SOUTH, RANGE 6 WEST, WILLAMETTE MERIDIAN; SECTION 35 CORNER NONE
DONATION LAND CLAIM JEREMIAH STARR NO. 44 CORNER N-NW
CONDITION REPORT ____; REFERENCED OUT ____; RENEWED XX; SURVEYED IN ____

LOCATION AND COMMENTS:

CORNER IS LOCATED ON A WESTERLY FACING SLOPE AND 50 FEET WEST OF A DIRT ROAD AT THE NORTHWEST CORNER OF A CHRISTMAS TREE FARM TO REACH CORNER FROM THE JUNCTION OF COON AND BELLFOUNTAIN ROADS, TRAVEL SOUTHERLY ON BELLFOUNTAIN ROAD FOR 0.26 MILES, THEN RIGHT ON CHRISTMAS TREE FARM ACCESS ROAD (DIRT), FOLLOW ROAD WESTERLY AND NORTHERLY FOR 0.90 MILES AND PARK, THEN WEST ±50 FEET TO CORNER. CORNER IS POOR FOR PREMARKING AND GPS CONTROL.

MONUMENTS AND ACCESSORIES FOUND (CONDITION AND SOURCE):

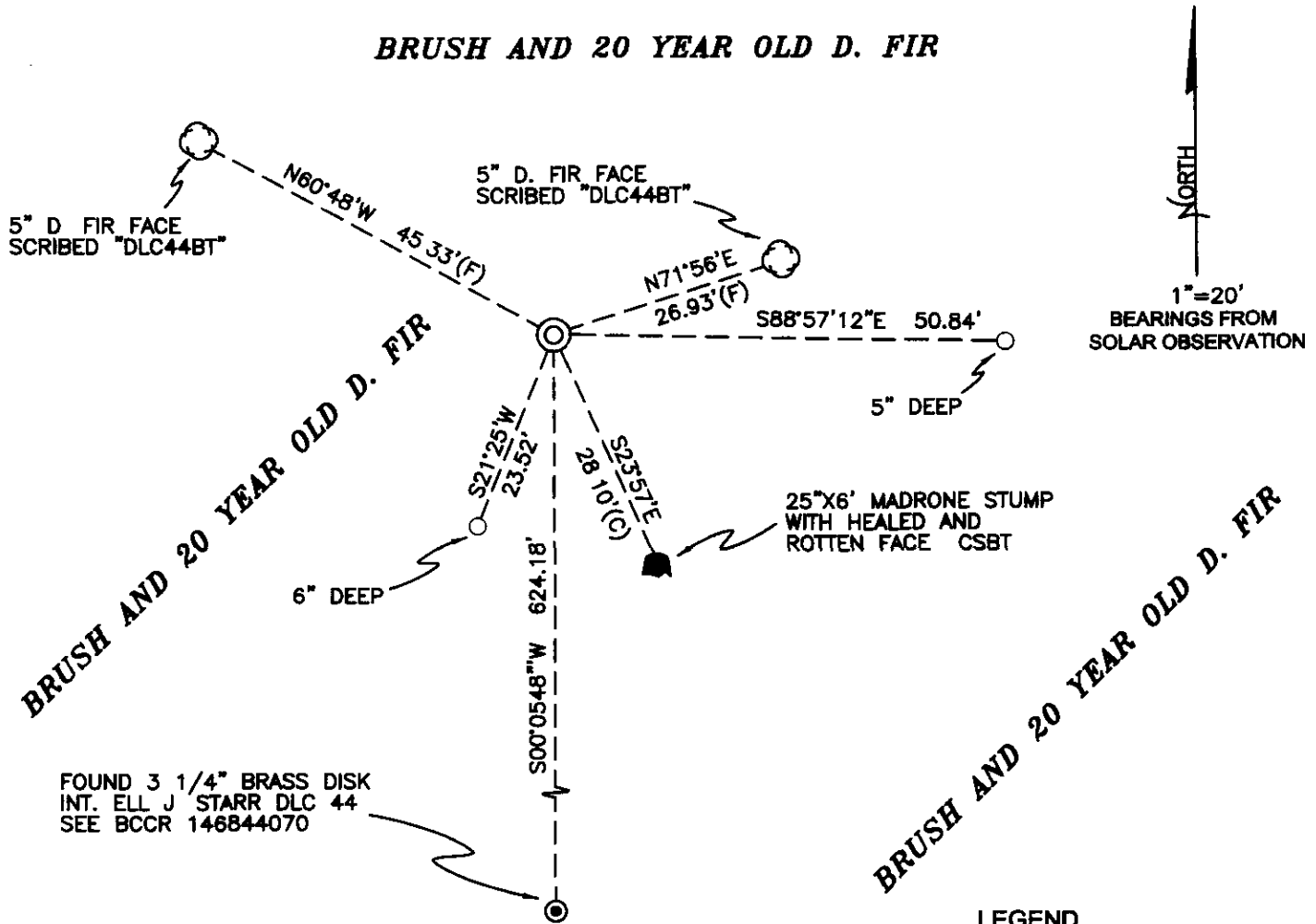
- 1 FOUND 5/8" X 30" IRON ROD WITH RED PLASTIC CAP MARKED "NORTHSTAR PLS 1823", 3" ABOVE GROUND LEVEL FOR CORNER POSITION
(SET POST PER RECORD [01])
(SET OAK STAKE FROM GLO BEARING TREE PER RECORDS [02] AND [03])
(SET 5/8" X 30" REBAR WITH RED PLASTIC CAP BY DISTANCE/DISTANCE INTERSECTION FROM TWO STANDING COUNTY SURVEYOR'S BEARING TREES PER RECORD [05])
- 2 FOUND 25" X 6' TALL PACIFIC MADRONE STUMP WITH OPEN ROTTED FACE, S23°57'E, 28.1 FEET TO TOP CENTER OF STUMP (MARKED 12" MADRONE, S26°30'E, 27.6 FEET PER RECORDS [02] AND [03]).
(FOUND 26" MADRONE WITH HEALED FACE, S26°30'E, 27.6 FEET PER RECORD [05])
- 3 FOUND 3 1/4" BRASS DISK AT THE NORTHEAST INTERIOR OF DLC NO. 44, S00°05'18"W, 624.18 FEET. SEE RESTORATION NO. 146844070
(SOUTH, 627.0 FEET PER RECORD [01])
(S 0°04'E, 624.3 FEET PER RECORD [02])
(S0°09'49"W, 624.30 FEET PER RECORD [05])

MONUMENT SET (PROCEDURES AND DESCRIPTION):

NO EVIDENCE OF THE GLO OR COUNTY SURVEYOR'S MONUMENTS COULD BE FOUND. THE LONE GLO ACCESSORY (24" OAK) IS MISSING. THE 36" OAK BEARING TREE PER RECORD [02] IS NOW JUST A ROOT HOLE WITH SCATTERED OAK ROOTS.

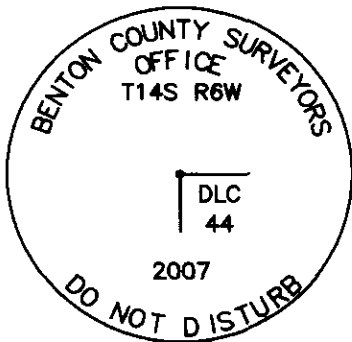
RECORD [05] ESTABLISHED THE SUBJECT CORNER BY DISTANCE/DISTANCE INTERSECTION FROM BOTH RECORD [02] ACCESSORIES. WE HAVE HELD THE SAID RECORD [05] MONUMENT (5/8" IRON ROD) FOR THE TRUE CORNER POSITION, WHICH FITS WELL THE LONE REMAINING RECORD [02] ACCESSORY. REMOVED THE 5/8" IRON ROD AND SET A 2" X 30" IRON ROD AND SET A 2" X 31 1/2" GALVANIZED IRON PIPE WITH A 3 1/4" BRASS DISK CONCRETED IN THE TOP, 1" ABOVE GROUND LEVEL AND MARKED AS SHOWN ON PAGE 2 OF 2. SET A 6 FOOT ORANGE CARSONITE "SURVEY MARKER" POST 0.5 FEET WEST OF NEW MONUMENT. REMOVED THE 5/8" IRON ROD FROM THE AREA.

BRUSH AND 20 YEAR OLD D. FIR



FOUND 3 1/4" BRASS DISK
INT. ELL J STARR DLC 44
SEE BCCR 146844070

MONUMENT DETAIL



3 1/4" BRASS DISK

LEGEND

- SET 5/8" X 30" REBAR WITH YELLOW PLASTIC CAP MKD "BENTON COUNTY SURVEYOR"
- (F) MEASUREMENT TO FACE
- (C) MEASUREMENT TO CENTER
- ⊙ GOVERNMENT MONUMENT SET AS SHOWN
- ⊙ GOVERNMENT MONUMENT FOUND AS SHOWN
- ⊙ BEARING TREE AS NOTED
- C.S.B.T. COUNTY SURVEYORS BEARING TREE
- BCCR BENTON COUNTY CORNER RESTORATION
- BEARING TREE STUMP AS NOTED

NEW ACCESSORIES.

1. SET REBAR (SEE LEGEND) 5" BELOW GROUND LEVEL S88°57'12"E, 50.84 FEET.
2. SET REBAR (SEE LEGEND) 6" BELOW GROUND LEVEL S21°25'W 23.52 FEET.
3. 5" D. FIR FACE SCRIBED "DLC44BT" N71°56'E, 26.93 FEET TO FACE. SET AN ALUMINUM NAIL AND PLASTIC WASHER AT THE BOTTOM OF THE FACE FOR DISTANCE AND ANGLE MEASUREMENT.
4. 5" D. FIR FACE SCRIBED "DLC44BT" N60°48'W, 45.33 FEET TO FACE. SET ALUMINUM NAIL AND PLASTIC WASHER AT THE BOTTOM OF THE FACE FOR DISTANCE AND ANGLE MEASUREMENT.

NOTES

COMPASS DECLINATION IS 20° EAST ALL MEASURED DISTANCES AND BEARINGS ARE TO THE CENTER OF THE OBJECT, UNLESS OTHERWISE NOTED ALL BEARING TREES ARE PAINTED AND HAVE A B.T. TAG ATTACHED, FACING THE CORNER UNLESS OTHERWISE NOTED. ALL NEW BEARING TREES HAVE A PLASTIC WASHER (STAMPED "BENTON COUNTY SURVEYOR CORNER RESTORATION") ATTACHED (BY ALUMINUM NAIL) TO THE FACE, BELOW THE "BT" FOR DISTANCE AND ANGLE MEASUREMENT UNLESS OTHERWISE NOTED. THE DRAWING IS FROM AUTOCAD RELEASE 2006.

THIS RESTORATION WAS PERFORMED AT THE DIRECTION AND APPROVAL OF THE BENTON COUNTY SURVEYOR, RD

FIRM/AGENCY. BENTON COUNTY SURVEYOR'S OFFICE
ADDRESS. 360 S.W AVERY AVE. CORVALLIS OR 97333; PH. 766-6821
PRESENT: DAVID M. DEAN, P.L.S AND BERNIE ALTENBACH, SURVEY TECH.
EQUIPMENT: LEICA TCR 1105 WITH TDS SOFTWARE ON BOARD

REGISTERED
PROFESSIONAL
LAND SURVEYOR

5/23/07 *David M. Dean*

OREGON
JULY 13, 1984
DAVID M. DEAN
2090

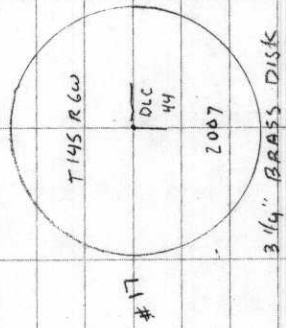
RENEWAL DATE: 12/31/07

PTLY, CLO Y
60° F, 29.7" H7
LEICA TCR 1105/TDS

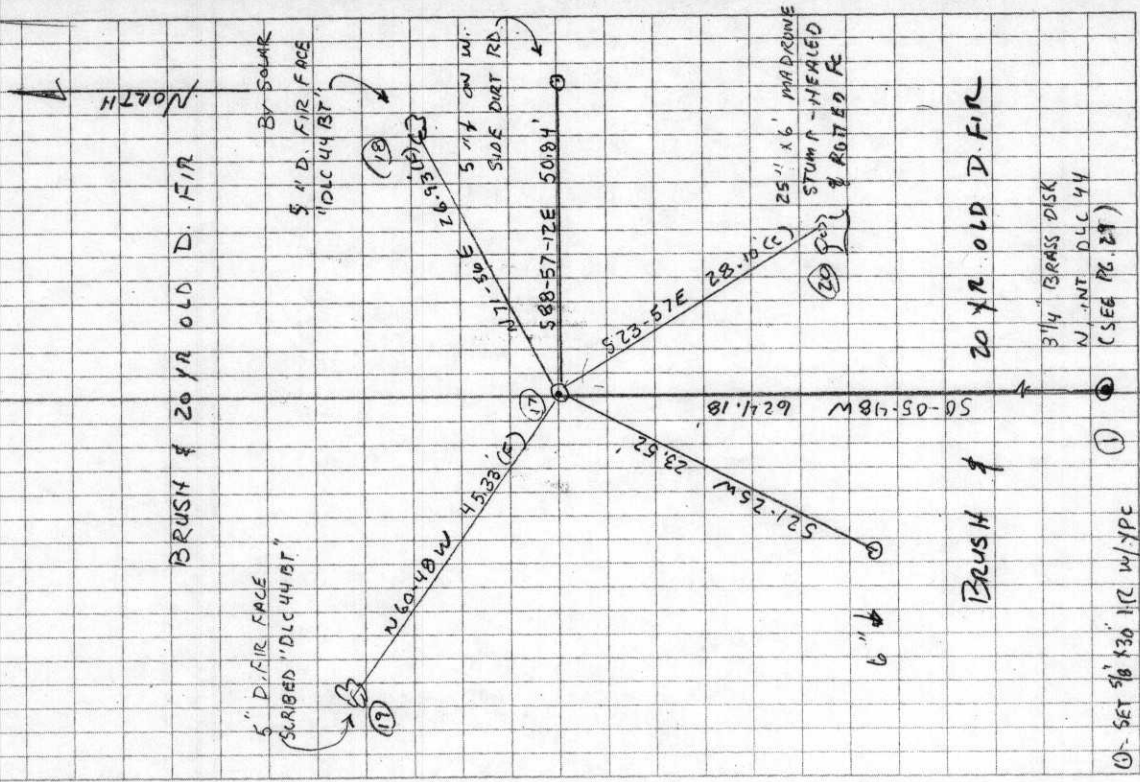
146044080
REMONUMENTING N-NW J. STARR DLC 44

T195 R 6W

Fd 5/8" x 30" I.R. w/ RED PLASTIC CAP MKD "NORTHSTAR"
PLS 1820 3" ↑ FOR CAR POSITION.
GLO OAK BT NOW MISSING
F.M. WILKES (CS117) OAK NOW ROOT HOLE
w/ OAK ROOTS (S 20° W 46°) WILKES
MADRONE BT NOW " STUMP w/ HEALED
AND ROTTED FACE
REMOVED 5/8" I.R. AND SET 2" x 3 1/2" G.I.P
w/ 3 1/4" BRASS DISK CONC. IN TOP 1"
GROUND LEVEL, MKD AS SHOWN
SET 6' ORANGE CARBONITE "SURVEY MARKED"
POST D- WEST OF NEW MON.
REMOVED 5/8" I.R. FROM AREA



5/10/07 25/30
D. DEAN
B. ALTENBACH



BRUSH & 20 YR OLD D. FIR

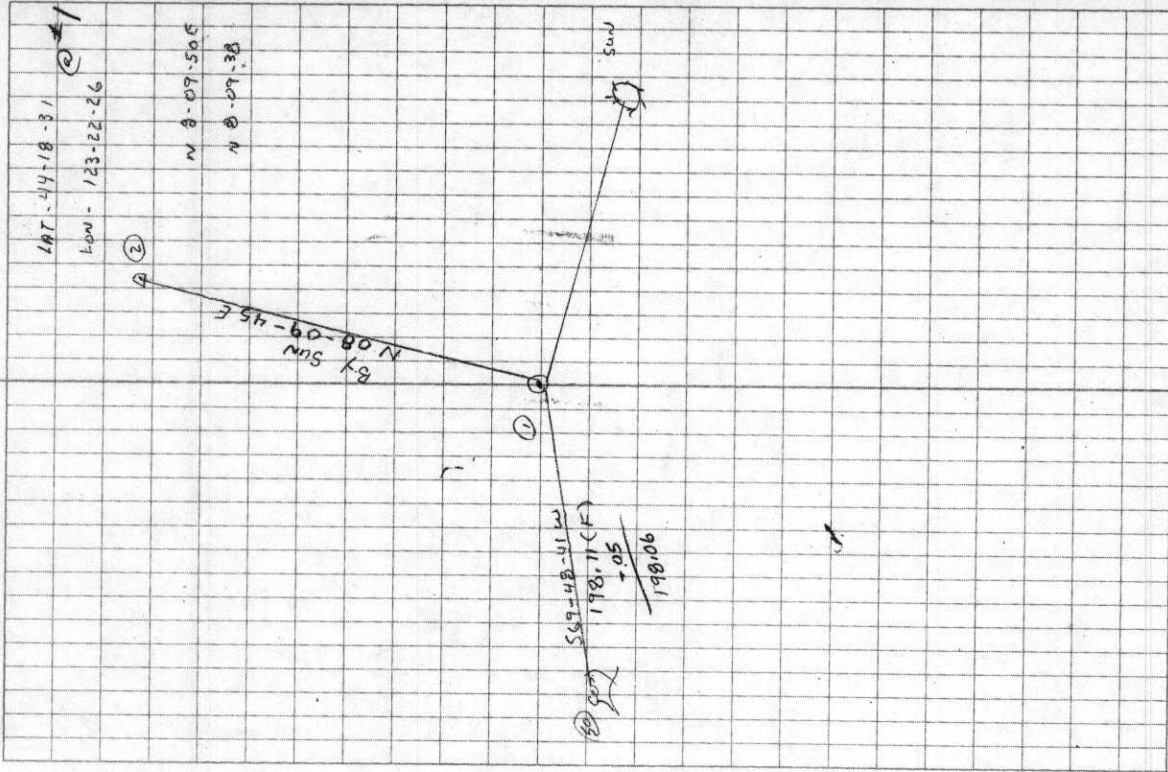
BRUSH & 20 YR OLD D. FIR

① SET 5/8" x 30" I.R. W/ YPE

3 1/4" BRASS DISK
W/ INT. DLC 44
(SEE PG. 29)

D. DEAN
B. ALTENBACH
5/9/07

CLEAR, MILD
60° A.M., 29.7" H₁
LEICA TCR 1105/TDS



TRAV & EVIDENCE TIES N. INT DLC 44 AND

N/NW DLC 44 7145 R6W

17) Fd 5/8" IR w/ RPC
"NORTH STAR" PLS 1828"
AT N/NW DLC 44 1416
(SEE PG. 29)

2-16-17

16) SET SPIKE IN DIRT RD.

1-2-16

15) Fd REMAINS OF SHATTERED

& BURNT OAK STUMP
GLO BT - NO V.S. REMAIN

1-3-15

3) SET H/T

2-1-3

50) Fd 21" W OAK SNAG - FELL SNAG
& OPENED STUMP TO V.S. 11" AND NATCH
GLO BT (S70°W - 198.0)

2-1-50

2) SET SPIKE IN XMAS
TREE FARM

1) Fd 5/8" x 30" IR - TOP 10"
BENT S/LY - TIED SPIN HOLE

Witnesses, C.C. Bell, and - Carey.

Survey #39 N.W. Cor. of Wm Knotts I.L.C. # 45 in T 115 R 5 W.
 Set oak stake 3x4x36" for Cor, tree and stump standing
 Marked, Ash 6" bears N 71° 50' E, 7.6 ft dist.
 Ash 15" " S 88° 50' E, 121.4 ft " to face of Stage.
 Ash 8" " S 62° 30' W, 6.5 " "
 Witnesses, Wm Knotts, Birt Read + W.F. Gay.

30 Cont. N.W. Cor. of the Elizabeth Herbert I.L.C. # 41 in T 135, R 5 W.
 Set Stone 18x18x8" for Cor. Under bridge, old tree gone.
 Marked, Thorn 6" bears N 69° 30' E, 28.3 dist.
 Oak 10" " S 27° 10' W, 48.7 " "
 Ash 13" " S 82° 30' W, 77.9 " "
 Witnesses, Dick Scott, R. Gissman and G. Lutes.

Record

40 S.W. Cor. of Jesse H. Caton I.L.C. # 37 in T 155 R 5 W.
 Set 1x30" iron pin in old stake for Cor, S.E. tree standing.
 Marked, Chittin 7" bears N 30° E, .5 ft dist.
 Witnesses, W.H. Cleary, Oscar Gustafson, and - Whitford.

40 ~~1/4 Sec Cor det secs 36 & 1~~ in T 155 R 5 W.
 Set Sandstone 16x10x3" for Cor, one tree standing.
 Marked fir, 28" bears N 61° 30' W, 28.0 ft dist.
 Witnesses, W.F. Allan, Oscar Gustafson + C.P. Peringer.

40 S.E. Cor. of Jesse H. Caton I.L.C. # 37 in T 155 R 5 W.
 Set Oak stake 3x4x30" for Cor. All trees standing
 Witnesses C.P. Peringer, W.H. Cleary + Art. Peringer.

40 N.E. Cor. of Jesse H. Caton I.L.C. # 60 in T 145 R 5 W.
 Set Stone 12x6x6" for Cor, in original position, stump near gone.
 Marked, apple 7" N 33° 15' E, 6.6 ft dist.
 Service 5" N 61° 15' W, 9.3 " "
 Witnesses C.P. Peringer, W.H. Cleary and Art. Peringer.

40 N.E. Cor. of Jeremiah Starr I.L.C. # 44 in T 145 R 6 W.
 Set Sandstone, 12x6x5" for Cor. S.E. RT. standing
 Marked, Oak 10" bears N 51° 40' E, 24.7 ft dist.
 " 7" " N 25° - W 33.7 " "
 Witnesses same as caton n.e. cor.

40 North Exterior Cor. of Jeremiah Starr I.L.C. # 44, in T 145, R 6 W.
 Set oak stake 3x3x30" for Cor, one RT. standing, old stake for a pin
 Marked, Madrona 12" bears S 26° 30' E, 27.6 ft dist.
 Oak 36" " S 20° W - 46.0 " "
 Witnesses, C.P. and Art Peringer and W.H. Cleary.

in witness

the study

come.

in side
Cor.

North Exterior corner of Jeremiah Starr DLC 44, Twp 14 S R 6 W

2428

Reestablishment by ^{F. M. WILKES}~~W. C. Galloway~~

Date 1909

Set Oak stake 3 x 3 x 30" for corner. One B. T. standing, old stake hole for

Madrona 12" in diam bears S 26° 30' E 27.6 feet distant

Oak 36" in diam bears S 20° W 46.0 feet dist.

Witnesses C. P. and Art Persinger and W. H. Dean