

CORNER FILE TRACKING

H:\Survey\Corners\Misc\Filetrac.doc

11/23/98

CORNER NUMBER
146847040

STEP	HISTORY()	RESTORATION()
Form Prepared, DB	11/25/04	11/17/04
Field Inspection, DB	11/16/04	11/16/04
Form Checked, DB	11/21/04	11/21/04
Form Edited, DB	11/23/04	11/23/04
Form Signed, DB	11/23/04	11/23/04
GIS Index	11/18/04	11/18/04
Authorize Payment, DB	—	—
Archive Digital Files	11/23/04	11/23/04
Collect Documents	11/23/04	11/23/04
Scanned	11/29/04	11/29/04
Copy For Filming	11/23/04	11/23/04
Filed, DB		
Finish index (count unit)	11/16/04	11/16/04
Filmed (Archived), DB		

(DB) = Entry needed in database (Access).

COMMENTS:

DATE 10/25/2004TOWNSHIP 14 SOUTH, RANGE 06 WEST, WILLAMETTE MERIDIAN; SECTION 28 CORNER NONE
DONATION LAND CLAIM L. A. RAMBO NO. 47 CORNER NORTHWEST**COMMON CORNER(S):**

POINT ON SOUTH LINE OF ISAAC RAMBO D.L.C. NO. 44

RECORDS (INFORMATION IN BOLD ITALICS IS COUNTY STAFFS' INTERPRETATION OF THE RECORD)

BASED ON EXTENSIVE RESEARCH AND RECOVERY OF EVIDENCE, THIS OFFICE HAS DETERMINED THAT MOST GENERAL LAND OFFICE SURVEYORS MEASURED TO THE FACE OF BEARING TREES.

- [01] GENERAL LAND OFFICE (GLO) NOTES OF THE L. A. RAMBO DONATION LAND CLAIM (D.L.C.) NO. 47 BY DENNIS HATHORN, D.S., DATED FEBRUARY 2, 1855. **SET POST FOR N.W. CORNER FROM WHICH AN OAK 20 IN DIA. BEARS N33°W, 183 LKS (120.78 FEET); AN OAK 36 IN DIA. BEARS N58°E, 281 LKS (185.46 FEET).**
- [02] GLO NOTES OF THE ISAAC RAMBO D.L.C.NO. 62 BY DENNIS HATHORN, D.S., DATED FEBRUARY 3, 1855. **BEGINNING AT THE S.W. CORNER . . . EAST 4.25 CHS TO L. A. RAMBO'S S.W. COR.**
- [03] COUNTY SURVEY NO. 4840 BY NICKOLAS YINGER, P.L.S., DATED NOVEMBER 1969. **SET 5/8" ROD.**
- [04] COUNTY SURVEY NO. 9013 BY THEODORE LANGTON, P.L.S., DATED OCTOBER 5, 1995. **FOUND 5/8" ROD PER C.S. 4840 IN THE SOUTHEAST EDGE OF A 18" MAPLE. A N-S FENCE IS EAST 5 FEET AND A NEW GRAVEL ROAD IS SE ABOUT 100 FEET.**

COMMENTS/LOCATION/ETC:**NOTES:**

THIS IS A MICROSOFT WORD 2000 DOCUMENT NAMED "46847040" CREATED FROM A BOILER PLATE DOCUMENT NAMED "HISTORY", WHICH HAS A STYLESHEET NAMED "CORNER" ATTACHED TO IT.

FIRM/AGENCY: BENTON COUNTY SURVEYOR'S OFFICE
ADDRESS: 360 S.W. AVERY AVE. CORVALLIS OR 97333; PH. 766-6821
RESEARCH BY: DAVID M. DEAN, P.L.S.
DATA ENTRY BY: DEAN

BENTON COUNTY CORNER RESTORATION FORM, PAGE 1 OF 2, 146847040R1

SEE CORNER HISTORY FORM FOR RECORDS ETC.

CORNER RESTORATION FIELD BOOK NUMBER 22 PAGE(S) 68 DATE 11/16/2004
TOWNSHIP 14 SOUTH, RANGE 6 WEST, WILLAMETTE MERIDIAN; SECTION 28 CORNER NONE
DONATION LAND CLAIM L. A. RAMBO NO. 47 CORNER NORTHWEST
CONDITION REPORT ; REFERENCED OUT ; RENEWED XX; SURVEYED IN

LOCATION AND COMMENTS:

CORNER IS LOCATED AT THE SOUTHEAST CORNER OF A ± 5 YEAR OLD CLEAR CUT, ON A GENTLE NORTH FACING SLOPE. TO REACH CORNER FROM THE JUNCTION OF ALPINE AND RAINBOW CREEK ROADS, TRAVEL NORTHERLY ON RAINBOW CREEK ROAD FOR 0.28 MILES; THEN BEAR LEFT AT ROAD JUNCTION AND CONTINUE ON RAINBOW CREEK ROAD FOR 0.24 MILES; THEN LEFT (WEST) ON LOGGING SPUR FOR 0.29 MILES TO END OF ROAD; THEN NORTH 30 FEET TO CORNER. CORNER IS POOR FOR PREMARKING AND GPS CONTROL.

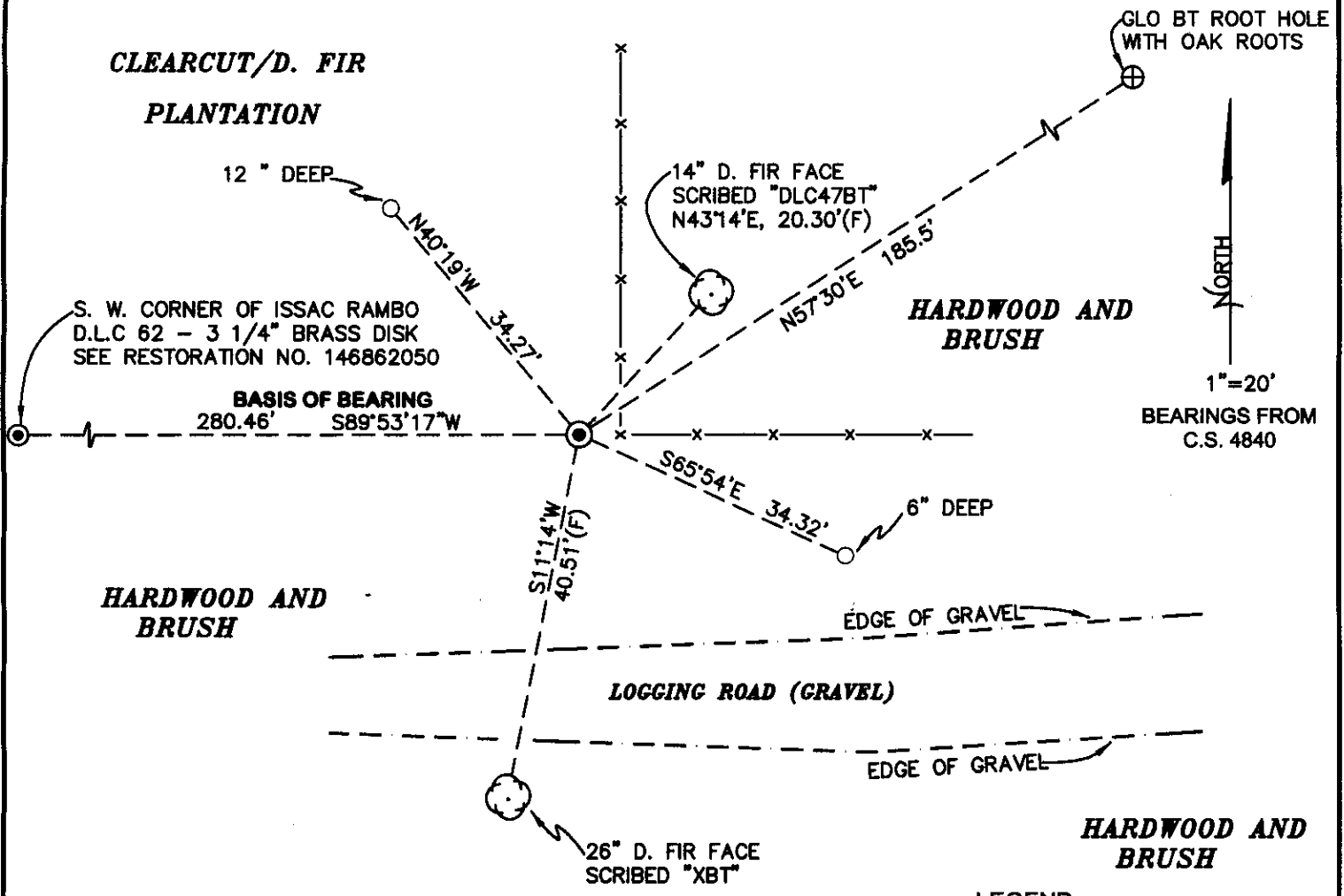
MONUMENTS AND ACCESSORIES FOUND (CONDITION AND SOURCE):

1. FOUND 5/8" IRON ROD, 2" INSIDE THE SOUTHEAST CORNER OF AN 18" MAPLE FOR CORNER POSITION.
(SET 5/8" ROD ON THE SOUTH LINE OF THE ISAAC RAMBO D.L.C. NO. 62, AT RECORD GLO DISTANCE FROM THE SOUTHWEST CORNER OF D.L.C. NO. 62 PER RECORD [03]).
(FOUND 5/8" ROD IN THE SOUTHEAST EDGE OF 18" MAPLE PER RECORD [04]).
2. FOUND 3 1/4" BRASS DISK ON 2" GALVANIZED IRON PIPE AT THE SOUTHWEST CORNER OF THE ISAAC RAMBO D.L.C.NO. 62, S89°53'17"W, 280.46 FEET. SEE CORNER RESTORATION NO. 146862050.
(WEST, 280.50 FEET PER RECORD [02]).
(STONE, S89°53'17"W, 280.50 FEET PER RECORD [03]).
(10" X 5" X ? STONE, S89°44'35"W, 280.50 FEET PER RECORD [04]).
3. FOUND ROOT HOLE AND OAK ROOTS OF NORTHEAST GLO BEARING TREE, N57°30'E, 186 FEET.
(36" OAK, N58°E, 185.46 FEET PER RECORD [01]).

MONUMENT SET (PROCEDURES AND DESCRIPTION):

NO EVIDENCE OF ORIGINAL GLO MONUMENT OR NORTHWEST GLO BEARING TREE COULD BE FOUND. THE REMAINS OF THE NORTHEAST GLO BEARING TREE IS IN SUBSTANTIAL AGREEMENT WITH THE 5/8" IRON ROD SET PER RECORD [03].

WE HELD THE SAID 5/8" IRON ROD (NOW 0.2' INSIDE AN 18" MAPLE) FOR THE TRUE CORNER. WE BELIEVE THE PLACEMENT OF THIS MONUMENT TO BE A GOOD FAITH EFFORT TO PERPETUATE THIS CLAIM CORNER. NO NEW MONUMENT WAS SET. REFERENCED 5/8" IRON ROD AS SHOWN ON PAGE 2 OF 2. SET A 6 FOOT ORANGE CARSONITE "SURVEY MARKER" POST, 1 FOOT EAST OF CORNER MONUMENT.



MONUMENT DETAIL



5/8" IRON ROD
IN S.E. CORNER OF 18" MAPLE
NO NEW MONUMENT SET

LEGEND

- SET 5/8" X 30" REBAR WITH YELLOW PLASTIC CAP MKD "BENTON COUNTY SURVEYOR"
- FOUND MONUMENT AS NOTED
- (F) MEASUREMENT TO FACE
- ⊕ ROOT HOLE
- ⊙ GOVERNMENT MONUMENT FOUND AS SHOWN
- ⊙ BEARING TREE AS NOTED
- GLO GENERAL LAND OFFICE
- x— MOSTLY DOWN WOVEN AND BARBED WIRE FENCE

NEW ACCESSORIES:

1. SET REBAR (SEE LEGEND) 12" BELOW GROUND LEVEL, N40°19'W, 34.27 FEET
2. SET REBAR (SEE LEGEND) 6" BELOW GROUND LEVEL, S65°54'E, 34.32 FEET
3. 26" D. FIR FACE SCRIBED "XBT", S11°14'W, 40.51 FEET TO FACE. SET ALUMINIUM NAIL AND PLASTIC WASHER IN BOTTOM OF BLAZE FOR DISTANCE AND ANGLE MEASUREMENT.
4. 14" D. FIR FACE SCRIBED "DLC47BT" N43°14'E, 20.30 FEET TO FACE. SET ALUMINIUM NAIL AND WASHER IN BOOTOM OF BLAZE FOR DISTANCE AND ANGLE MEASUREMENT.

NOTES:

COMPASS DECLINATION IS 20° EAST. ALL MEASURED DISTANCES AND BEARINGS ARE TO THE CENTER OF THE OBJECT, UNLESS OTHERWISE NOTED. ALL BEARING TREES ARE PAINTED AND HAVE A B.T. TAG ATTACHED, FACING THE CORNER UNLESS OTHERWISE NOTED. ALL NEW BEARING TREES HAVE A PLASTIC WASHER (STAMPED "BENTON COUNTY SURVEYOR CORNER RESTORATION") ATTACHED (BY ALUMINIUM NAIL) TO THE FACE, BELOW THE "BT" FOR DISTANCE AND ANGLE MEASUREMENT UNLESS OTHERWISE NOTED. THE DRAWING IS FROM AUTOCAD RELEASE 2002.

THIS RESTORATION WAS PERFORMED AT THE DIRECTION AND APPROVAL OF THE BENTON COUNTY SURVEYOR. *rw*

FIRM/AGENCY: BENTON COUNTY SURVEYOR'S OFFICE
 ADDRESS: 360 S.W. AVERY AVE. CORVALLIS OR 97333; PH. 766-6821
 PRESENT: DAVID M. DEAN, P.L.S., BERNIE ALTENBACH AND ADAM CASALEGNO, SURVEY TECH.
 EQUIPMENT: LEICA TCR 1105 TOTAL STATION WITH TDS ONBOARD

REGISTERED
 PROFESSIONAL
 LAND SURVEYOR

David M. Dean
 11/23/04

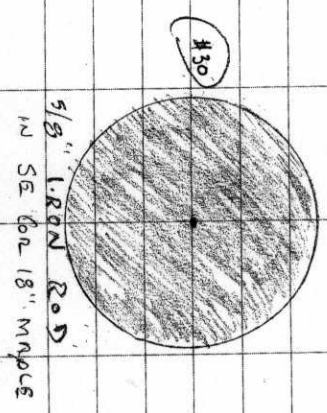
OREGON
 JULY 13, 1984
 DAVID M. DEAN
 2090

RENEWAL DATE: 12/31/05

146847040

REFERENCING NW LA RAMBO DIC #47 14-6
AS MONUMENTED IN CS. NO. 4840

FD 5/8" I.R. @ T. 47 AS SET PER
CS. 4840 BY RECORD DIST (4.25 DMS)
FROM L. I. RAMBO #62, FD ROOT
HOLE w/ REMAINING OAK ROOTS AT
NE GLO BT. RECORD BMS/DIST PER
GLO IN GOOD AGREEMENT w/ 5/8" I.R.
HELD SAID I.R. FOR TRUE CORNER
POSITION. I.R. IS TO BE INSIDE A 18"
MAPLE ON SE SIDE, NO NEW
MONUMENT SET, REFERENCED
AS STOWN AND SET 6 ORANGE
CARSONITE "SURVEY MARKED" POST
1' E OF COR. MON.



CD 1, Cool
48° E 29.5' N
FILE: 46847040.025

B. RUTENBRACH 22/68
A. COSALEGNO
11/16/04

LEIGH TCR 1105/TDS

X @ #2 BS #10

