

CORNER FILE TRACKING

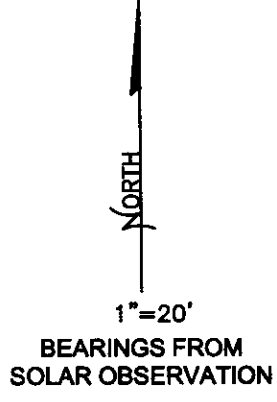
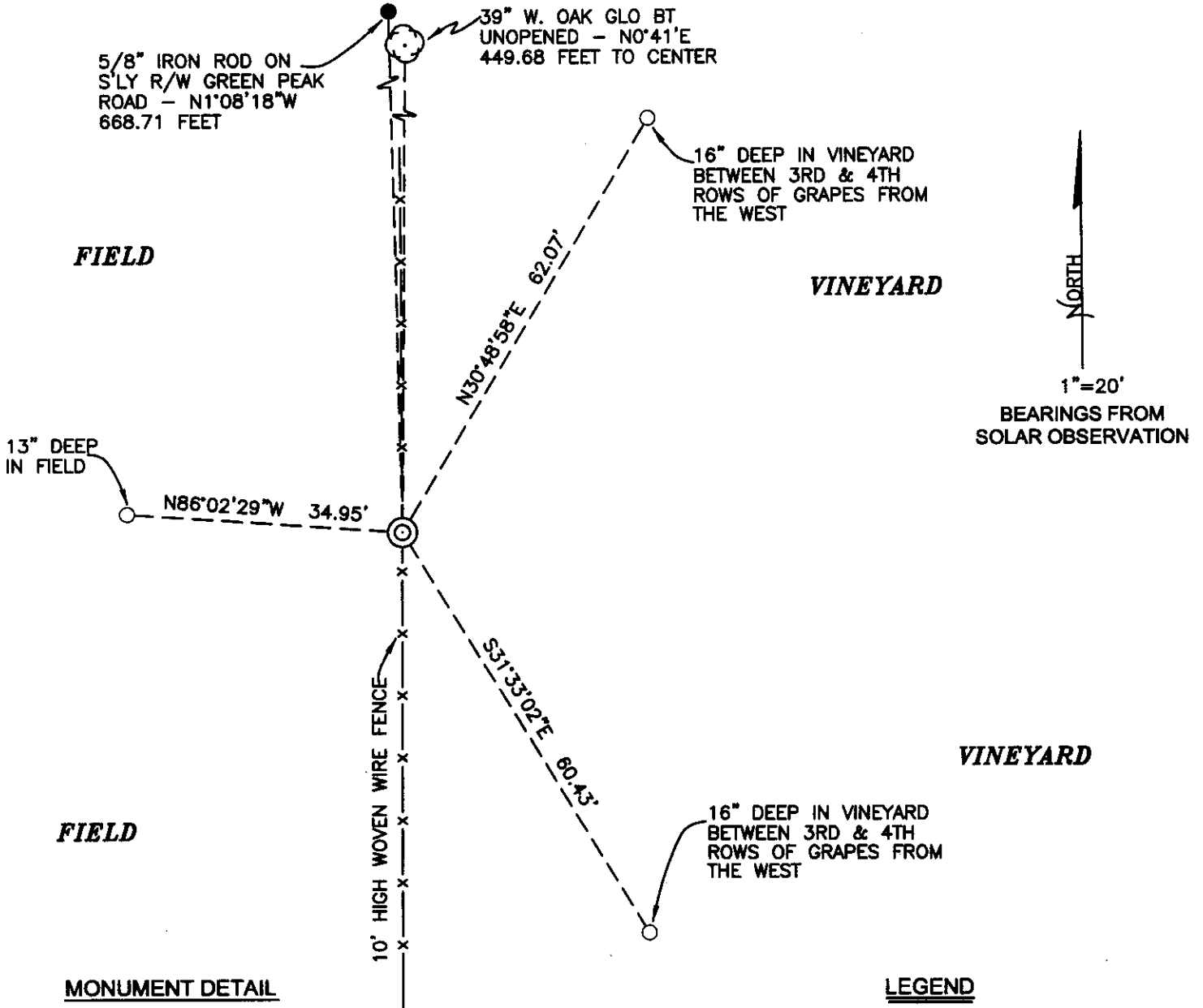
H:\Survey\Corners\Misc\Filetrac.doc
11/23/98

CORNER NUMBER
146852030

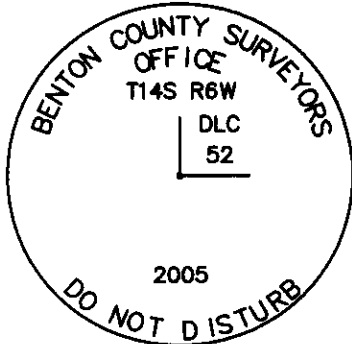
STEP	HISTORY()	RESTORATION()
Form Prepared, DB	9/17/04	1/6/05
Field Inspection, DB	1/4/05	1/4/05
Form Checked, DB	1/14/05	1/14/05
Form Edited, DB	1/18/05	1/18/05
Form Signed, DB	1/18/05	1/18/05
Counter Index	1/4/05	1/4/05
GIS Index	1/6/05	1/6/05
Authorize Payment, DB	—	—
Archive Digital Files	1/18/05	1/18/05
Collect Documents	1/14/05	1/14/05
Scanned	1/18/05	1/18/05
Copy For Filming	1/18/05	1/18/05
Filed, DB		
Finish index (count unit)	1/4/05	1/4/05
Filmed (Archived), DB		

(DB) = Entry needed in database (Access).

COMMENTS:



MONUMENT DETAIL



3 1/4" BRASS DISK

LEGEND

- SET 5/8" X 30" REBAR WITH YELLOW PLASTIC CAP MKD "BENTON COUNTY SURVEYOR"
- FOUND MONUMENT AS NOTED
- (C) MEASUREMENT TO CENTER
- ⊙ GOVERNMENT MONUMENT SET AS SHOWN
- ⊙ BEARING TREE AS NOTED
- GLO GENERAL LAND OFFICE

NEW ACCESSORIES:

1. SET REBAR (SEE LEGEND) 16" DEEP IN VINEYARD, N30°48'58"E, 62.07 FEET.
2. SET REBAR (SEE LEGEND) 15" DEEP IN VINEYARD, S31°33'02"E, 60.43 FEET.
3. SET REBAR (SEE LEGEND) 13" DEEP IN FIELD, N86°02'29"W, 34.95 FEET.

NOTES:

COMPASS DECLINATION IS 20° EAST. ALL MEASURED DISTANCES AND BEARINGS ARE TO THE CENTER OF THE OBJECT, UNLESS OTHERWISE NOTED. ALL BEARING TREES ARE PAINTED AND HAVE A B.T. TAG ATTACHED, FACING THE CORNER UNLESS OTHERWISE NOTED. ALL NEW BEARING TREES HAVE A PLASTIC WASHER (STAMPED "BENTON COUNTY SURVEYOR CORNER RESTORATION") ATTACHED (BY ALUMINUM NAIL) TO THE FACE, BELOW THE "BT" FOR DISTANCE AND ANGLE MEASUREMENT UNLESS OTHERWISE NOTED. THE DRAWING IS FROM AUTOCAD RELEASE 2002.

THIS RESTORATION WAS PERFORMED AT THE DIRECTION AND APPROVAL OF THE BENTON COUNTY SURVEYOR, RW

FIRM/AGENCY: BENTON COUNTY SURVEYOR'S OFFICE
 ADDRESS: 360 S.W. AVERY AVE. CORVALLIS OR 97333; PH. 766-6821
 PRESENT: DAVID M. DEAN, P.L.S. AND ADAM CASALEGNO, SURVEY TECH.
 EQUIPMENT: LEICA TCR 1105 WITH TDS ON BOARD

REGISTERED
 PROFESSIONAL
 LAND SURVEYOR

1/18/05 *David M. Dean*

OREGON
 JULY 13, 1984
 DAVID M. DEAN
 2090

RENEWAL DATE: 12/31/05

BENTON COUNTY CORNER RESTORATION FORM, PAGE 1 OF 2, 146852030R2
SEE CORNER HISTORY FORM FOR RECORDS ETC.

CORNER RESTORATION FIELD BOOK NUMBER 23 PAGE(S) 5 DATE 01/04/2005
TOWNSHIP 14 SOUTH, RANGE 6 WEST, WILLAMETTE MERIDIAN; SECTION 22 CORNER NONE
DONATION LAND CLAIM WILLIAM MC LAGAN CORNER SOUTHWEST
CONDITION REPORT _____; REFERENCED OUT _____; RENEWED XX; SURVEYED IN _____

LOCATION AND COMMENTS:

CORNER IS LOCATED ON A GENTLE SOUTH FACING SLOPE ON THE WEST SIDE OF A VINEYARD IN A NORTH-SOUTH WOVEN WIRE FENCE. TO REACH CORNER FROM THE JUNCTION OF GREEN PEAK AND HAWLEY CREEK ROADS, TRAVEL NORTHERLY AND WESTERLY ON GREEN PEAK ROAD FOR 0.86 MILES; THEN LEFT ON DRIVEWAY TO 25904 GREEN PEAK ROAD FOR 0.09 MILES TO HOUSE; THEN WALK WESTERLY ALONG NORTH EDGE OF VINEYARD FOR ±550 FEET TO NORTH-SOUTH FENCE; THEN SOUTH ALONG FENCE FOR ±270 FEET TO CORNER. CORNER IS GOOD FOR PERMARKING AND GPS CONTROL.

MONUMENTS AND ACCESSORIES FOUND (CONDITION AND SOURCE):

1. FOUND 5/8" X 30" IRON ROD, 3" BELOW GROUND LEVEL IN SMALL MOUND OF BROKEN STONES. TOP 6" OF ROD WAS BENT EASTERLY 0.3 FEET. HELD SPIN HOLE OF STRAIGHT PORTION FOR CORNER POSITION.
(FOUND STONE AT SW CORNER MC LAGAN DLC NO. 52, REMONUMENTED WITH 5/8" IRON ROD PER RECORD [11]).
2. FOUND 5/8" IRON ROD FLUSH WITH GROUND LEVEL, N1°08'18"W, 668.71 FEET. IRON IS ON THE NORTH SIDE OF A 6" DIAMETER WOOD FENCE POST.
(SET 5/8" IRON ROD, N1°16'07"W, 668.73 FEET [CALCULATED] PER RECORD [10]).
3. FOUND 39" W. OAK GLO BEARING TREE, N0°41'E, 449.68 FEET TO CENTER. NO VISIBLE SCRIBS, TREE IS UNOPENED.
(15" OAK, N1/2°E, 448.14 FEET (PROBABLY MEASURED TO FACE) PER RECORD [01]).
(36" OAK, N1/2°E, 448.14 FEET PER RECORD [03]).

MONUMENT SET (PROCEDURES AND DESCRIPTION):

WE HELD THE IRON ROD AS SET PER RECORD [11] FOR TRUE CORNER POSITION. THIS POSITION IS IN GOOD AGREEMENT WITH RECORD [10] POSITION AS SHOWN IN NO. 2 ABOVE. POSITION OF IRON ROD IS ALSO IN ACCEPTABLE LIMITS OF THE RECOVERED GLO BEARING TREE. REMOVED THE 5/8" IRON ROD AND SET A 2" X 31 1/2" GALVANIZED IRON PIPE WITH A 3 1/4" BRASS DISK CONCRETED IN THE TOP, FLUSH WITH GROUND LEVEL AND MARKED AS SHOWN ON PAGE 2 OF 2. RESET THE 5/8" X 30" IRON ROD ON THE NORTH SIDE OF NEW MONUMENT, IN PLUM POSITION AND 3" BELOW GROUND LEVEL. SET 6 FOOT ORANGE CARSONITE "SURVEY MARKER" POST 0.5 FEET SOUTH OF NEW MONUMENT.

DATE 09/17/2004

TOWNSHIP 14 SOUTH, RANGE 6 WEST, WILLAMETTE MERIDIAN; SECTION 22 CORNER N/A
 DONATION LAND CLAIM WILLIAM MCLAGAN NO. 52 CORNER S.W.

COMMON CORNER(S):

NONE

RECORDS (INFORMATION IN *BOLD ITALICS* IS COUNTY STAFFS' INTERPRETATION OF THE RECORD)

BASED ON EXTENSIVE RESEARCH AND RECOVERY OF EVIDENCE, THIS OFFICE HAS DETERMINED THAT MOST GENERAL LAND OFFICE SURVEYORS MEASURED TO THE FACE OF BEARING TREES.

- [01] GENERAL LAND OFFICE (GLO) NOTES BY D. HATHORN C. S., DATED JANUARY 31, 1855. *SET POST FOR S. W. CORNER FROM WHICH AN OAK 15" DIA. BEARS N1/2°E, 679 LKS (448.14 FEET). AN OAK 12" DIA. BEARS N3°W, 693 LKS (457.38 FEET).*
- [02] COUNTY SURVEY NO. 455 (OLD NO. 210) FIELD NOTES (FIELD BOOK 17 PG 39) BY BURT WILKES D. C. S., DATED JUNE 1914. *TIED N. E. GLO BEARING TREE FROM RANDOM TRAVERSE, TIED CORNER BUT NOT DESCRIBED.*
- [03] CORNER RESTORATION BOOK NO. 1 PG 80 NO NAME GIVEN DATED JUNE 16-JULY 16 1914. *S. W. CORNER OF W. MCLAGAN CLAIM 52. SET 8" X 6" X 14" STONE, OAK 15" DIA. (NOW 26") N1/2°E, 6.79 CHS (448.14 FEET), OTHER TREE COMPLETELY GONE.*
- [04] CORNER RESTORATION NO. 2452 BY W. C. GALLOWAY C. S., DATED JULY 16, 1914. *THIS IS TRANSCRIBED FROM RECORD NO. [03] AND MAY CONTAIN ERRORS AND/OR OMISSIONS.*
- [05] COUNTY MAP NO. 14-6-00011 (OLD NO. 210) NO NAME OR DATE GIVEN. *TIED, BUT NOT DESCRIBED.*
- [06] COUNTY MAP NO. 14-6-00018 (OLD NO. 210) NO NAME OR DATE GIVEN. *TIED AND DESCRIBED, STONE.*
- [07] SUBDIVISION MAP OF CLOVERDALE FARMS BY BURT WILKES D. C. S., DATED AUGUST 11, 1914. *STONE S. W. CORNER OF W. MCLAGAN D. L. C. 52.*
- [08] COUNTY SURVEY NO. 2743 BY RICHARD W. FAIL P. L. S., DATED MARCH 16, 1956. *NOT TIED BUT DESCRIBED.*
- [09] COUNTY SURVEY NO. 5985 BY NICK YINGER P. L. S., DATED DECEMBER 1975. *FOUND STONE S. W. CORNER OF D. L. C. 52.*
- [10] COUNTY SURVEY NO. 6315 BY NICK YINGER P. L. S., DATED MARCH 1977. *S. W. CORNER OF D. L. C. NO. 52 FOUND STONE.*
- [11] COUNTY SURVEY NO. 6656 BY PAUL E. GREEN P. L. S., DATED APRIL 1978. *STONE S. W. CORNER OF MCLAGAN D. L. C. NO 52, REMONUMENTED WITH 5/8" IRON ROD.*

COMMENTS/LOCATION/ETC:**NOTES:**

THIS IS A MICROSOFT WORD 2000 DOCUMENT NAMED "46852030" CREATED FROM A BOILER PLATE DOCUMENT NAMED "HISTORY", WHICH HAS A STYLESHEET NAMED "CORNER" ATTACHED TO IT.

FIRM/AGENCY: BENTON COUNTY SURVEYOR'S OFFICE
ADDRESS: 360 S.W. AVERY AVE. CORVALLIS OR 97333; PH. 766-6821
RESEARCH BY: DAVID M. DEAN, P.L.S.
DATA ENTRY BY: ADAM CASALEGNO, SURVEY TECH.

G.S. # 210
 Coverdale Co. -
 T.M. Mendenhall Form -
 T.H.S., T.C.W.
 June 16, 1916-MW



N.W. cor. Wm McLogan Cr # 52 - 146. Set heart oak post.
 Fir 10 (now 26) S. 80° E. 30' (15.584' 30) "Maple 12 (now 20) S. 45° E. 88' (15.539 E 88)

S. W. cor Wm-McLogan Cr # 52, set 8x6 x 17" stone,
 Oak 15 (now 26) N. 6° E. 67' other tree completely gone.

N.W. cor Isaac Rambo Cr 62. set 5" pipe in original hole,
 Oak. S. 38° W (15.314' 01, 57' (15.558' 41) Oak NW 8' W (5.442' 52 (5.571).

S. W. cor Isaac Rambo Cr 62: Stone 15x14x6 - original hole
 Oak 18 (now 24) N. 8° E. 53',
 Mark Oak 11 N. 58 1/2° W. 303

N. E. cor Isaac Rambo Cr 62. Stone 16x12x6"
 Old stamps N. 80° W. 291, N. 35° E. 3.18.
 Mark Oak 9° N. 83 3/4° W. 2.414, Oak 12. S. 61 1/2° W. 3.075-

Cor of secs. 22, 23, 26 & 27, set 5" pipe
 Oak 20" N. 40 1/2° E. 12.75 (15.8200) Oak 20. S. 55 3/4° E. 9.84

4 sec. cor. bet. secs. 22 & 23, set iron pipe, old cor obliterated,
 set on true section equidistant from sections.
 From which the S. E. cor of the Wm McLogan Cr 62 bears N. 88 3/4° E. 1.49

W.C. to
 cor of secs 14, 15, 22 & 23, set stone 18x10x8 10 1/4" No. 4 true cor.
 large second growth fir stump stands in original position of second
 one. The bears N. 62° E. 12.87-62° slope = 1.273 From W.C.
 Mark Fir 24" S. 82 1/2° W. 4.155, Fir 14. S. 70 3/4° E. 9.02, Oak 20" S. 89 1/2° W. 2.363

4 sec. cor. bet. secs. 21 & 22, set stone 16x18x6", from which
 Oak 7. (now 12) S. 3° W. 82. Older gone
 Mark Fir 20" N. 79 3/4° E. 0.20

C. Sur

S. W. corner William McLagan Cl 52, Twp. 14-6

2452

Reestablishment by W. C. Galloway

July 16, 1914

Set 8 x 6 x 14" stone

Oak 15" (now 26") in diam bears N $\frac{1}{2}$ ° E

Other tree completely gone

6.79 chains

146052030

REMONUMENTING SW WILLIAM MCLAGAN

D.L.C. # 52 T145 R6W

Fd 5/8" X 30" I.R. w/TOP 6" BENT 03
E'LY 3" ↓ IN MOUND OF BROKEN
SMALL

STONES. NO MARKS ON STONES

Fd 39" W. OAK GLO BT - UNOPENED

Fd 9/8" IR IN FL LINE ON S RLW

GREEN PEAK RD PER CS. 6315.

I.R. @ COR PER CS. 6656 IN GOOD

AGREEMENT w/ I.R. ON S RLW GREEN

PEAK PER CS 6315 WHICH RECOVERED CS 455

STONE BY B. WILKES.

HELD SPIN HOLE OF CS. 6656 I.R. FOR

TRUE COR. POSITION. REMOVED AND SET

2' X 3 1/2" G.I.P. W/ 3/14" BRASS DISK CONCL.

IN TOP, FLUSH W/ GROUND LEVEL,

MKD AS SHOWN - COR FALLS UNDEP

N/S WOVEN WIRE FC. SET 6' ORANGE

CARSONITE "SURVEY MARKER"

POST 05 SOUTH OF NEW

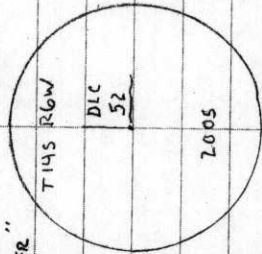
MON. RESET CS. 6656

IR. ON N SIDE NEW

MON IN PLUM POSITION

AND 3" BELOW GROUND

LEVEL



CLEAR, COOL
40° F 29.5" Hg

LEICA TCR 1105/TDS

1/4/04
D. DEAN
A. COSALEGNO

23/5

