

CORNER FILE TRACKING

H:\Survey\Corners\Misc\Filetrac2.doc

06/15/2003

CORNER NUMBER
146854050

STEP	HISTORY()	RESTORATION()
Form Prepared, DB	6/15/07	6/13/07
Field Inspection, DB	7/12/07	7/12/07
Form Checked, DB	7/25/07	7/25/07
Form Edited, DB	7/25/07	7/25/07
Form Signed, DB	7/25/07	7/25/07
Counter Index	7/16/07	7/16/07
GIS Index	7/16/07	7/16/07
Authorize Payment, DB	—	—
Archive Digital Files	7/30/07	7/30/07
Collect Documents	N/A	N/A
Scanned	7/31/07	7/31/07
Copy For Filming		
Filed, DB		
Finish index (count unit)	7/12/07	7/12/07
Filmed (Archived), DB		
Document No's to Andrew		

(DB) = Entry needed in database (Access).

COMMENTS:

146854050

DATE 06/15/2007TOWNSHIP 14 SOUTH, RANGE 06 WEST, WILLAMETTE MERIDIAN; SECTION 10 CORNER NONE
DONATION LAND CLAIM JOHN STARR NO. 54 CORNER NORTHWEST**COMMON CORNER(S):**SOUTH WEST CORNER GEORGE SMITH DLC NO, 63
POINT ON THE EAST LINE OF THE SAMUEL HAPTONSTALL DLC NO 55**RECORDS (INFORMATION IN BOLD ITALICS IS COUNTY STAFFS' INTERPRETATION OF THE RECORD)**

BASED ON EXTENSIVE RESEARCH AND RECOVERY OF EVIDENCE, THIS OFFICE HAS DETERMINED THAT MOST GENERAL LAND OFFICE SURVEYORS MEASURED TO THE FACE OF BEARING TREES

- [01] GENERAL LAND OFFICE (GLO) NOTES OF THE JOHN W STARR DONATION LAND CLAIM (DLC) NO 54 BY DENNIS HATHORN, D S , DATED JANUARY 26, 1855 *SET POST FOR NORTHWEST CORNER FROM WHICH A FIR 6" IN DIA. BEARS S68°W, 20 LKS (13.20 FEET); A DOGWOOD 8" IN DIA. BEARS S86°E, 9 LKS (5.94 FEET).*
- [02] GLO NOTES OF THE GEORGE SMITH DLC NO 63 BY DENNIS HATHORN, D S , DATED FEBRUARY 6, 1855 *BEGINNING AT JOHN W. STARR'S N.W. COR. IN SEC. 10. FROM WHICH A FIR 6" IN DIA. BEARS S68°W, 20 LKS (13.20 FEET); A DOGWOOD 8" IN DIA. BEARS S86°E, 9 LKS (5.94 FEET).*
- [03] COUNTY SURVEY NO 1397 (OLD NO 336) FIELD NOTES (FIELD BOOK NO 78, PAGE 31) BY W C GALLOWAY, C S , DATED SEPTEMBER 19, 1938 *N.W. OF STARR CLAIM, SET 1" IRON ROD. MARKED 45" MULTIPLE STEM MAPLE, N11 1/2°E, 0.532 CHS (35.11 FEET) TO FACE OF LOWER BLAZE; MARKED FIR 35" S5°E, 0.372 CHS (24.55 FEET). FOUND FIR 6" NOW 36", S68°W, 0.20 CHS (13.20 FEET) STANDING.*
- [04] BENTON COUNTY MAP NO 14-6-00005 BY BENTON COUNTY SURVEYOR'S OFFICE, NO DATE GIVEN *1" IRON ROD. FIR 6", S68°W, 0.20 CHS (13.20 FEET) STANDING; FIR 35" S5°E, 0.372 CHS (24.55 FEET); MAPLE, 45" N11 1/2°E, 0.532 CHS (35.11 FEET) TO BLAZE.*
- [05] COUNTY SURVEY NO. 8838 BY JIM PETERSON, P L S , DATED APRIL 14, 1994 *N.W. CORNER DLC 54. FOUND 1" IRON ROD. BT'S FOUND: 30" FIR STUMP, (S5°E, .372 CHS) HEALED FACE; 50" MAPLE CLUSTER (N11 1/2°E, .532 CHS) NO MARKS VISIBLE; 30" FIR STUMP (S68°W, .20 CHS) HEALED FACE; SOUTHERLY FORK OF MAPLE CLUSTER IS DOWN. BT'S SET: 14" FIR, N59°E, 30.4 FEET, MARKED "DLC63BT"; 12" FIR, S5°E, 21.2 FEET, MARKED "DLC54BT". CORNER LIES IN SMALL SWALE 100 FEET EAST OF GRAVEL ROAD.*

NOTES:

THIS IS A MICROSOFT WORD 2003 DOCUMENT NAMED "46854050" CREATED FROM A BOILER PLATE DOCUMENT NAMED "HISTORY", WHICH HAS A STYLESHEET NAMED "CORNER" ATTACHED TO IT

FIRM/AGENCY: BENTON COUNTY SURVEYOR'S OFFICE
ADDRESS: 360 S.W AVERY AVE CORVALLIS OR 97333, PH 766-6821
RESEARCH BY: DAVID M DEAN, P L S
DATA ENTRY BY: SAME

BENTON COUNTY CORNER RESTORATION FORM, PAGE 1 OF 2, 146854050R2**SEE CORNER HISTORY FORM FOR RECORDS ETC.**

CORNER RESTORATION FIELD BOOK NUMBER 25 PAGE(S) 50 DATE 07/12/2007
TOWNSHIP 14 SOUTH, RANGE 06 WEST, WILLAMETTE MERIDIAN; SECTION 10 CORNER NONE
DONATION LAND CLAIM JOHN STARR NO. 54 CORNER NORTHWEST
CONDITION REPORT ; REFERENCED OUT ; RENEWED XX; SURVEYED IN

LOCATION AND COMMENTS:

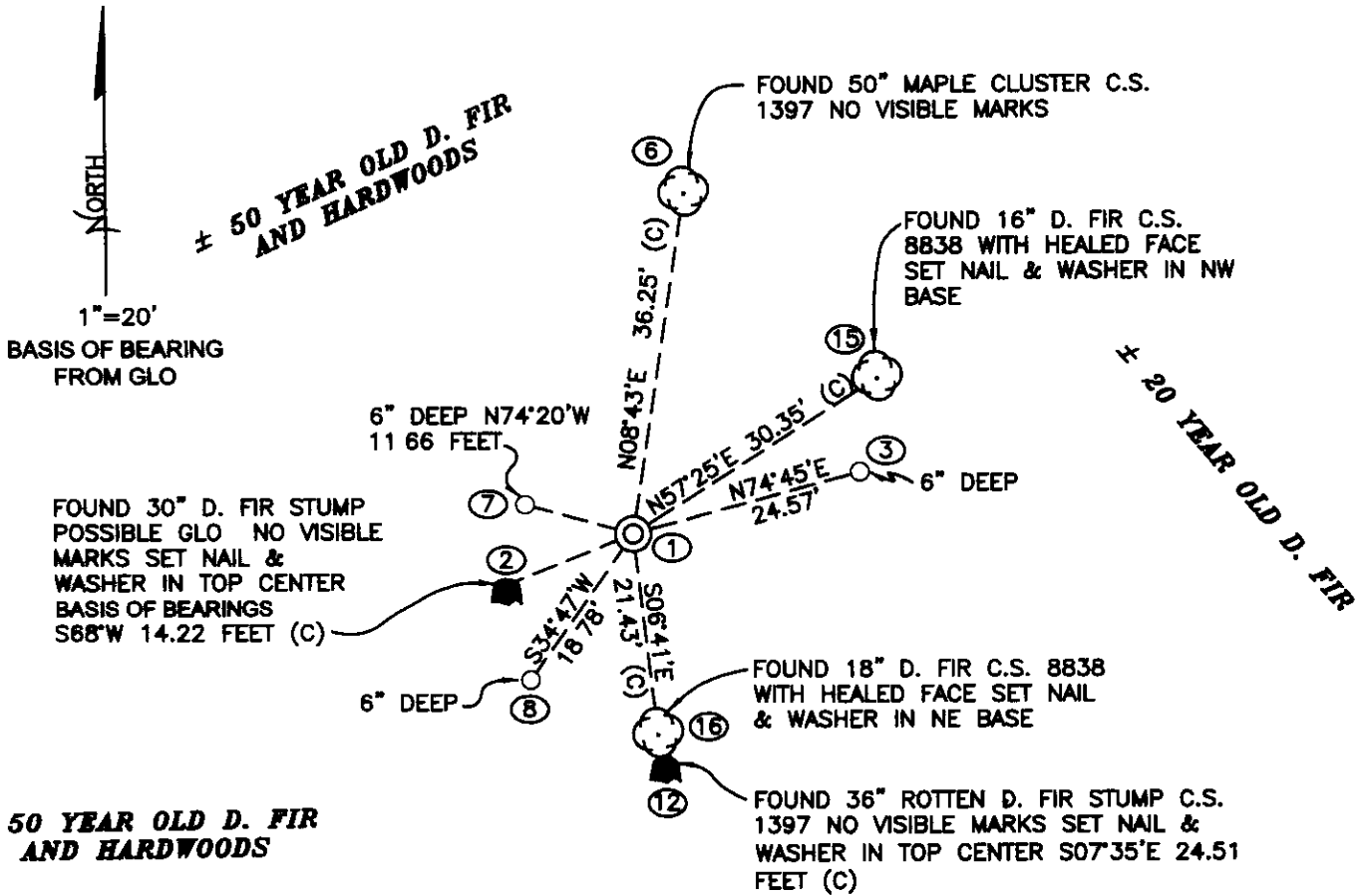
CORNER IS LOCATED AT THE BASE OF A WESTERLY SLOPE, ON THE EASTERLY EDGE OF A DRY CREEK BED TO REACH CORNER FROM THE EASTERLY INTERSECTION OF PARK ROAD AND DAWSON ROAD, TRAVEL NORTHWESTERLY ON PARK ROAD FOR 0 55 MILES, THEN RIGHT ON A PRIVATE DRIVE FOR 0 09 MILES, THEN LEFT ON SPUR ROAD FOR 0 48 MILES, THEN RIGHT ON SPUR ROAD FOR 0 19 MILES, THEN LEFT ON SPUR ROAD FOR 0 13 MILES TO LOCATION TAG ON A 28" D FIR ON THE EAST SIDE OF THE ROAD, THEN WALK S47°35'E, 88.90 FEET TO THE CORNER CORNER IS POOR FOR PREMARKING AND GPS CONTROL

MONUMENTS AND ACCESSORIES FOUND (CONDITION AND SOURCE):

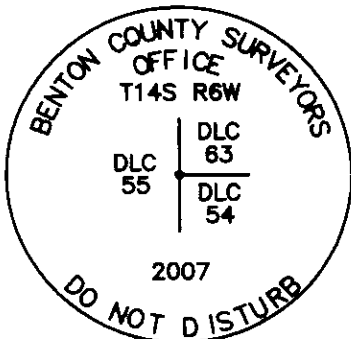
- 1 FOUND A 3/4" X 31 1/4" IRON ROD, FLUSH WITH GROUND LEVEL AND FIRMLY SET FOR CORNER POSITION
(SET 1" IRON ROD PER RECORD [03])
(1" IRON ROD PER RECORD [04])
(FOUND A 1" IRON ROD PER RECORD [05])
- 2 FOUND A 36" D FIR STUMP WHICH WE OPEN, BUT FIND NO MARKS, S68°W, 14 22 FEET TO CENTER SET ALUMINUM NAIL AND PLASTIC WASHER IN CENTER FOR DISTANCE AND ANGLE MEASUREMENT
(6" D FIR, S68°W, 13 20 FEET PER RECORDS [01] - [05])
- 3 FOUND A 50" MAPLE CLUSTER, WITH SOUTHERLY PORTION DOWN, N08°43'E, 36 25 FEET TO CENTER OF CLUSTER
(MARKED A 45" MULTIPLE STEM MAPLE, N11 1/2°E, 35 11 FEET TO BLAZE PER RECORDS [03] AND [04])
- 4 FOUND A 36" ROTTEN D FIR STUMP S07°35'E, 24 51 FEET TO CENTER NO MARKS FOUND ON THIS STUMP
(MARKED A 35" D FIR S05°E, 24 55 FEET PER RECORDS [03] AND [04])
(FOUND A 30" STUMP S05°E, 24 55 FEET PER RECORD [05])
- 5 FOUND A 16" DEAD D FIR WITH HEALED FACE N57°25'E, 30 35 FEET TO CENTER SET ALUMINUM NAIL AND PLASTIC WASHER IN NORTHWEST BASE FOR DISTANCE MEASUREMENT
(MARKED A 14" FIR N59°E, 30 40 FEET PER RECORD [05])
- 6 FOUND AN 18" D FIR WITH HEALED FACE S06°41'E, 21 43 FEET TO CENTER SET ALUMINUM NAIL AND PLASTIC WASHER IN EASTERLY BASE FOR DISTANCE MEASUREMENT
(MARKED 12" FIR, S5°E, 21 2 FEET PER RECORD [05])

MONUMENT SET (PROCEDURES AND DESCRIPTION):

HELD THE 3/4" IRON ROD FOR CORNER POSITION REMOVED IRON ROD AND SET A 2" X 31 1/2" GALVANIZED PIPE WITH A 3 1/4" BRASS DISK CONCRETED IN THE TOP, FLUSH WITH THE GROUND, MARKED AS SHOWN ON PAGE 2 OF 2 BURIED IRON ROD ON THE NORTH SIDE OF THE NEW MONUMENT, IN A HORIZONTAL POSITION SET A 6 FOOT ORANGE CARSONITE "SURVEY MARKER" POST, 0 5 FEET EAST OF THE NEW MONUMENT



MONUMENT DETAIL



3 1/4" BRASS DISK

LEGEND

- SET 5/8" X 30" REBAR WITH YELLOW PLASTIC CAP MKD "BENTON COUNTY SURVEYOR"
- (C) MEASUREMENT TO CENTER
- ⊙ GOVERNMENT MONUMENT SET AS SHOWN
- ⊙ BEARING TREE AS NOTED
- C.S.B.T. COUNTY SURVEYORS BEARING TREE
- GLO GENERAL LAND OFFICE
- ⊙ BEARING TREE STUMP AS NOTED
- C.S. COUNTY SURVEY NUMBER

NEW ACCESSORIES.

1. SET REBAR (SEE LEGEND) 6" BELOW GROUND LEVEL N74°45'E 24.57 FEET.
2. SET REBAR (SEE LEGEND) 6" BELOW GROUND LEVEL S34°47'W 18.78 FEET.
3. SET REBAR (SEE LEGEND) 6" BELOW GROUND LEVEL N74°20'W 11.66 FEET

NOTES:

COMPASS DECLINATION IS 20° EAST. ALL MEASURED DISTANCES AND BEARINGS ARE TO THE CENTER OF THE OBJECT, UNLESS OTHERWISE NOTED. ALL BEARING TREES ARE PAINTED AND HAVE A B.T. TAG ATTACHED, FACING THE CORNER UNLESS OTHERWISE NOTED. ALL NEW BEARING TREES HAVE A PLASTIC WASHER (STAMPED "BENTON COUNTY SURVEYOR CORNER RESTORATION") ATTACHED (BY ALUMINUM NAIL) TO THE FACE, BELOW THE "BT" FOR DISTANCE AND ANGLE MEASUREMENT UNLESS OTHERWISE NOTED. THE DRAWING IS FROM AUTOCAD RELEASE 2006.

THIS RESTORATION WAS PERFORMED AT THE DIRECTION AND APPROVAL OF THE BENTON COUNTY SURVEYOR, David M. Dean

FIRM/AGENCY: BENTON COUNTY SURVEYOR'S OFFICE
 ADDRESS 360 S.W. AVERY AVE CORVALLIS OR 97333; PH. 766-6821
 PRESENT: BERNIE ALTENBACH AND CODY WHEELER SURVEY TECH'S
 EQUIPMENT: LEICA TCR 1105 TOTAL STATION WITH TDS ONBOARD

REGISTERED
PROFESSIONAL
LAND SURVEYOR

7/25/07 *David M. Dean*

OREGON
JULY 13, 1984
DAVID M. DEAN
2090

RENEWAL DATE: 12/31/07

146854050

REMOVEMENT NW COR JOHN STER DEC NO 54

CLEAR WHEN
CA: 29.7" Hg
LOCATE 105/105

7-12-07
BAUTENBACH
C. WHEELER

5/30

FD 3/4" X 3/4" IR, FLUSH WITH THE GROUND,

SET FIRMLY FOR CORNER POSITION.

FD ONE 9/10 BT, 3/8" D FIR STUMP (S 87° W 13 20')

SAWED INTO STUMP AND FOUND NO MARKS.

FD CS 1/371 BT, 50" MARBLE CLUSTER (N 112° E 35.11')

SOOTHELY BEYOND OF CLUSTER HAS FALLEN, NO
TIED APPROX CENTER OF CLUSTER
MARKS VISIBLE. 3/8" ROTEN D FIR STUMP (S 52° E 24.55')

NO MARKS VISIBLE, TIED CENTER OF STUMP

FD CS 0838 BT, 18" D, FIE WITH HEALED FACE:

(S 52° E 21.2'), 1/2" DEAD D FIR WITH HEALED FACE

(N 59° E 30.4')

REMOVED I.R. AND SET A 2" X 3 1/2" GIP WITH

BRASS DISK CONCEALED IN TOP, MARKED AS SHOULD FIT WITH
WITH THE GROUND.

BURIED IR ON NORTH SIDE OF NEW MONUMENT IN

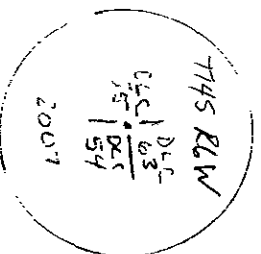
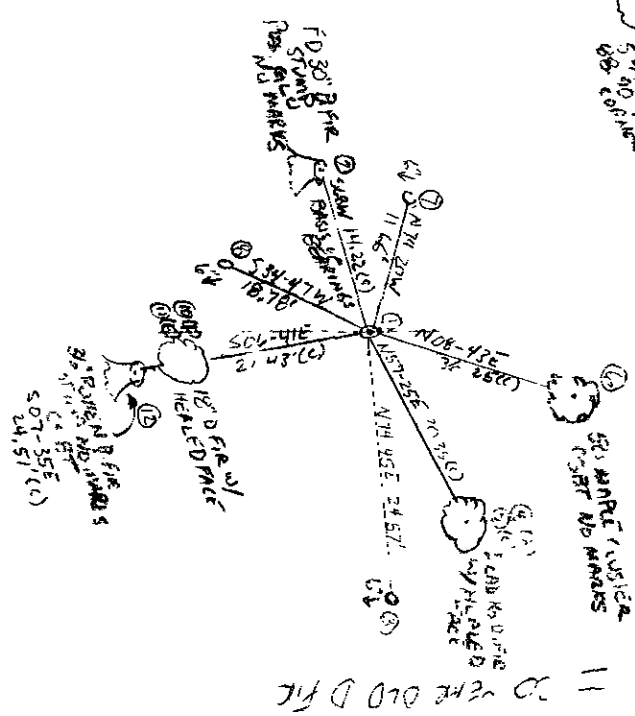
A HORIZONTAL POSITION.

SET 6" ORANGE CASQUETTE "SURVEY MARKER" POST

ON EAST

2-50 YEAR OLD D. FIR AND HARDWOODS.

1/2" IR
18" D
5" H
5" W
5" D
NO CORNER



3 3/4" BRASS DISK