

**146856010**

## CORNER FILE TRACKING

H:\Survey\Corners\Misc\Filetrac2.doc  
06/15/2003

<b>CORNER NUMBER</b>
<b>146856010</b>

STEP	HISTORY()	RESTORATION()
Form Prepared, DB	10/22/07	10/25/07
Field Inspection, DB	10/24/07	10/24/07
Form Checked, DB	11/20/07	11/20/07
Form Edited, DB	11/21/07	11/21/07
Form Signed, DB		
Counter Index	10/25/07	10/25/07
GIS Index	10/25/07	10/25/07
Authorize Payment, DB	—	—
Archive Digital Files		
Collect Documents	N/A	N/A
Scanned	11-23-07	11-23-07
Copy For Filming		
Filed, DB		
Finish index (count unit)	10/24/07	10/24/07
Filmed (Archived), DB		
Document No's to Andrew		

(DB) = Entry needed in database (Access).

### COMMENTS:

DATE 10/22/2007TOWNSHIP 14 SOUTH, RANGE 06 WEST, WILLAMETTE MERIDIAN, SECTION 01 CORNER N/A  
DONATION LAND CLAIM ORIN BELKNAP NO. 56 CORNER NORTHEAST**COMMON CORNER(S):**

POINT ON THE WEST LINE OF THE JOHN LLOYD D L C NO 37

**RECORDS (INFORMATION IN BOLD ITALICS IS COUNTY STAFFS' INTERPRETATION OF THE RECORD)**

BASED ON EXTENSIVE RESEARCH AND RECOVERY OF EVIDENCE, THIS OFFICE HAS DETERMINED THAT MOST GENERAL LAND OFFICE SURVEYORS MEASURED TO THE FACE OF BEARING TREES

- [01] GENERAL LAND OFFICE (GLO) NOTES BY DENNIS HATHORN, D S , DATED JANUARY 26, 1855 SET A POST. MARKED A 12" OAK N50°E 660 LKS. (435.60 FT) AND A 12" OAK S12°W 662 LKS. (436.92 FT).
- [02] COUNTY SURVEY NO 182 (OLD NO 82) FIELD NOTES (BOOK 6, PAGE 10) BY F M WILKES, C S , DATED JULY 21, 1910 FOUND ONE GLO BT STANDING. SET A 3/4"X36" BLACK PIPE. MARKED A FIR N06°45'E 4.786 CHS. (315.88 FT.) AND A 14" OAK S15°E 2.337 CHS. (154.24 FT.) SPIRE ON THE CHURCH BEARS S15°00'E AND A STAFF ON A HOUSE BEARS N31°32'W ABOUT 1.50 CHS. (99.00 FT.)
- [03] CORNER RESTORATION BOOK NO 1, PAGE 59 BY F M WILKES, C S , NO DATE GIVEN FOUND ONE GLO BT STANDING. SET A 3/4"X36" BLACK PIPE. MARKED A FIR N06°45'E 4.786 CHS. (315.88 FT.) AND A 14" OAK S15°E 2.337 CHS. (154.24 FT.). SPIRE ON THE CHURCH BEARS S15°00'E AND A STAFF ON A HOUSE BEARS N31°32'W ABOUT 1.50 CHS. (99.00 FT.)
- [04] CORNER RESTORATION NO 2468 TRANSCRIBED FROM RECORD [03] AND MAY CONTAIN ERRORS AND/OR OMISSIONS.
- [05] LOOSE LEAF NOTES OF BELLFOUNTAIN ROAD BY W C GALLOWAY, C S , DATED JANUARY 27, 1931 FOUND A 3/4" PIPE. FOUND A FIR (CSBT) N06°45'E 4.786 CHS. (315.88 FT.) AND A 14" OAK (CSBT) S15°00'E 2.337 CHS. (154.24 FT.).
- [06] BENTON COUNTY MAPS NO 14-6-00001, 00002 AND 00003, NO DATE OR DRAFTSMAN GIVEN 3/4" PIPE. FIR (CSBT) N06°45'E 4.786 CHS. (315.88 FT.). 14" OAK (CSBT) S15°00'E 2.337 CHS. (154.24 FT.). CUPOLA ON HOUSE N31°32'W. CHURCH SPIRE S05°00'E.
- [07] COUNTY SURVEY NO 7126 (SHEET 1) BY JAMES BLAIR, C S , DATED AUGUST 16, 1980 FOUND A 3/4" IRON PIPE.
- [08] COUNTY SURVEY NO 8028 BY NORMAN SPRINGER, P L S . DATED AUGUST 10, 1987 FOUND A 3/4" IRON PIPE.
- [09] COUNTY SURVEY NO 8098 BY NORMAN SPRINGER, P L S , DATED JANUARY 15, 1988 FOUND A 3/4" IRON PIPE.
- [10] PARTITION PLAT NO 93-17 BY JIM PETERSON, P L S , DATED MARCH 8, 1993 FOUND A 3/4" IRON PIPE.
- [11] COUNTY SURVEY NO 8978 BY TED LANGTON, P L S , DATED JUNE 14, 1995 FOUND A 3/4" (I. D.) PIPE.

**NOTES.**

THIS IS A MICROSOFT WORD 2003 DOCUMENT NAMED "46856010" CREATED FROM A BOILER PLATE DOCUMENT NAMED "HISTORY", WHICH HAS A STYLESHEET NAMED "CORNER" ATTACHED TO IT

**FIRM/AGENCY** BENTON COUNTY SURVEYOR'S OFFICE  
**ADDRESS:** 360 S W AVERY AVE CORVALLIS OR 97333, PH 766-6821  
**RESEARCH BY** BERNARD S ALTENBACH, ENGINEER/SURVEY TECH  
**DATA ENTRY BY:** SAME

**BENTON COUNTY CORNER RESTORATION FORM, PAGE 1 OF 2, 146856010R2**

**SEE CORNER HISTORY FORM FOR RECORDS ETC.**

CORNER RESTORATION FIELD BOOK NUMBER 26 PAGE(S) 10 DATE 10/24/2007  
TOWNSHIP 14 SOUTH, RANGE 6 WEST, WILLAMETTE MERIDIAN; SECTION 01 CORNER NONE  
DONATION LAND CLAIM ORRIN BELKNAP NO. 56 CORNER NORTHEAST  
CONDITION REPORT \_\_\_\_\_, REFERENCED OUT \_\_\_\_\_; RENEWED XX; SURVEYED IN \_\_\_\_\_

**LOCATION AND COMMENTS:**

CORNER IS LOCATED IN THE WESTERLY WHEEL TRACK OF BRUCE ROAD TO REACH CORNER FROM THE JUNCTION OF DAWSON AND BELLFOUNTAIN ROADS, TRAVEL NORTHERLY ON BELLFOUNTAIN AND BRUCE ROADS FOR 1 00 MILES TO CORNER, 8" BELOW ROAD SURFACE CORNER IS GOOD FOR PREMARKING AND FAIR FOR GPS CONTROL

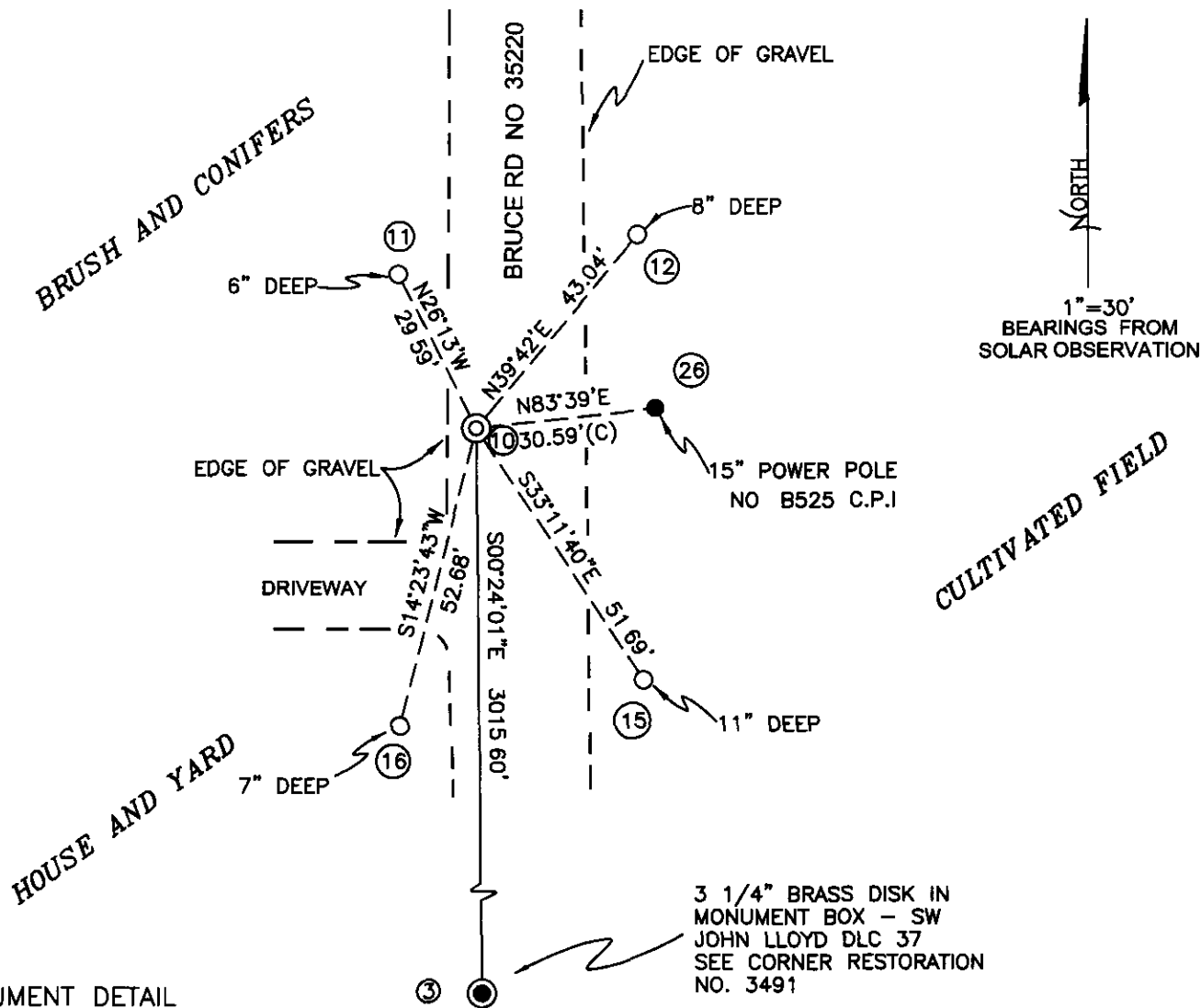
**MONUMENTS AND ACCESSORIES FOUND (CONDITION AND SOURCE):**

- 1 FOUND 3/4" RUSTY AND DETERIORATED IRON PIPE, 8" DEEP IN BRUCE ROAD FOR CORNER POSITION  
(SET 3/4" X 36" BLACK PIPE FROM 1 STANDING GLO BEARING TREE PER RECORDS [02] AND [03])  
(FOUND 3/4" PIPE PER RECORDS [05] AND [06])  
(FOUND 3/4" IRON PIPE PER RECORDS [06] - [11])
  
- 2 FOUND 3 1/4" BRASS DISK IN MONUMENT BOX, S00°24'01"E, 3015 60 FEET, THE SOUTHWEST CORNER OF THE JOHN LLOYD DLC NO 37 AS MONUMENTED IN BENTON COUNTY CORNER RESTORATION NO 2419  
(3/4" PIPE, S0°22'E, 3015 21 FEET PER RECORDS [05] AND [06])  
(FOUND 3/4" IRON PIN, S0°22'E, 3015 49 FEET PER RECORD [07])  
(FOUND 3/4" IRON PIPE, S0°22'00"E, 3015 45 FEET PER RECORD [08])  
(FOUND 3 1/4" BRASS CAP, S0°22'00"E, 3015 56 FEET PER RECORD [09])  
(FOUND BENTON COUNTY BRASS CAP, S0°22'00"E, 3015 68 FEET PER RECORD [11])

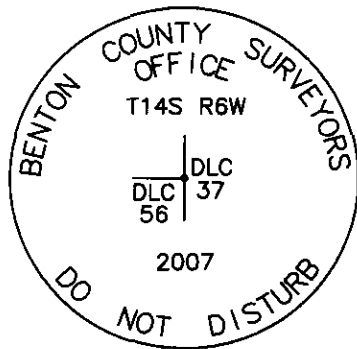
**MONUMENT SET (PROCEDURES AND DESCRIPTION):**

HELD THE 3/4" IRON PIPE FOR TRUE CORNER POSITION, WHICH WE FOUND FIRMLY SET IN PLUM POSITION THE GLO AND COUNTY SURVEYOR'S ACCESSORIES ARE ALL MISSING WE ATTEMPTED TO REMOVE SAID 3/4" IRON PIPE AND BROKE TWO (2) 9" SECTION OFF THE TOP THE REMAINING ±18" OF THE 3/4" IRON PIPE WERE LEFT IN POSITION

SET A 2" X 31 1/2" GALVANIZED IRON PIPE OVER REMAINING SECTION OF THE 3/4" IRON PIPE WITH A 3 1/4" BRASS DISK CONCRETED IN THE TOP, 8" BELOW ROAD SURFACE AND MARKED AS SHOWN ON PAGE 2 OF 2



MONUMENT DETAIL



3 1/4" BRASS DISK

LEGEND

- SET 5/8" X 30" REBAR WITH YELLOW PLASTIC CAP MKD "BENTON COUNTY SURVEYOR"
- POWER POLE
- (C) MEASUREMENT TO CENTER
- ⊙ GOVERNMENT MONUMENT SET AS SHOWN
- ⦿ GOVERNMENT MONUMENT FOUND AS SHOWN

NEW ACCESSORIES:

- 1 SET REBAR (SEE LEGEND) 8" BELOW GROUND LEVEL N39°42'E, 43.04 FEET
- 2 SET REBAR (SEE LEGEND) 11" BELOW GROUND LEVEL S33°11'40"E, 51.69 FEET.
- 3 SET REBAR (SEE LEGEND) 7" BELOW GROUND LEVEL S14°23'43"W 52.68 FEET.
- 4 SET REBAR (SEE LEGEND) 6" BELOW GROUND LEVEL N26°13'W, 29.59 FEET.
- 5 15" POWER POLE, CONSUMER POWER POLE NO. B252 N83°39'E, 30.59 FEET TO CENTER. SET ALUMINUM NAIL AND PLASTIC WASHER AT SOUTHSIDE CENTER FOR DISTANCE MEASUREMENT.

NOTES:

COMPASS DECLINATION IS 20° EAST. ALL MEASURED DISTANCES AND BEARINGS ARE TO THE CENTER OF THE OBJECT, UNLESS OTHERWISE NOTED. ALL BEARING TREES ARE PAINTED AND HAVE A B.T TAG ATTACHED, FACING THE CORNER UNLESS OTHERWISE NOTED. ALL NEW BEARING TREES HAVE A PLASTIC WASHER (STAMPED "SURVEYOR MARKER DO NOT REMOVE") ATTACHED BY AN ALUMINUM NAIL TO THE FACE, BELOW THE "BT" FOR DISTANCE AND ANGLE MEASUREMENT UNLESS OTHERWISE NOTED. THE DRAWING IS FROM AUTOCAD RELEASE 2008

THIS RESTORATION WAS PERFORMED AT THE DIRECTION AND APPROVAL OF THE BENTON COUNTY SURVEYOR \_\_\_\_\_

REGISTERED  
PROFESSIONAL  
LAND SURVEYOR

FIRM/AGENCY: BENTON COUNTY SURVEYOR'S OFFICE  
 ADDRESS: 360 SW AVERY AVE CORVALLIS OR 97333; PH. 766-6821  
 PRESENT: DAVID M DEAN, P.L.S AND BERNIE ALENBACH, SURVEY TECH  
 EQUIPMENT: LEICA TCR 1105 WITH TDS ON BOARD

OREGON  
 JULY 13, 1984  
 DAVID M. DEAN  
 2090

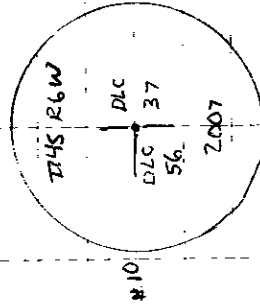
RENEWAL DATE: 12/31/07

146856010

REMONUMENTING NE ORRIN BELKNAP

DLC No 56 T145 R6W

FD 3/4" RUSTY IRON PIPE B<sub>1</sub> ↓ IN W'LY  
 WHERE TRACK OF BRUCE ROAD AS SET PER  
 CS No 182 fm 1 STANDING GLO BT  
 HELD IP FOR COR POSITION. ALL GLO  
 AND CS ACCESSORIES ARE NOW MISSING  
 TRYING TO REMOVE IR W/IE BROKE OFF  
 2, 9" SECTIONS OF 3/4" IP  
 SET 2" x 3 1/2" G.I.P. OVER REMAINING  
 SECTION OF 3/4" IP. W/ 3/4" BRASS  
 DISK CONC. IN TOP, 8" BELOW ROAD SURFACE,  
 MKD AS SHOWN. SET 5 NEW ACCESSORIES  
 DRIVE THE 2 9" SECTIONS OF 3/4" IP ON  
 SOUTH SIDE OF NEW MON IN PLUMB  
 POSITION AND 10" ↓



3 1/4 BRASS DISK

CUDY, MILD  
 SBPF, 300" H9  
 LEIATCR1105/TDS

TQ #4 BS #1 (SEE PG No. 8)

10/24/07 26/6  
 D DEAN  
 B ALTENBERG

