

146857020

CORNER FILE TRACKING

H:\Survey\Corners\Misc\Filetrac2.doc

06/15/2003

CORNER NUMBER
146857020

STEP	HISTORY()	RESTORATION()
Form Prepared, DB	10/22/07	11/6/07
Field Inspection, DB	11/6/07	11/6/07
Form Checked, DB	11/20/07	11/20/07
Form Edited, DB	11/21/07	11/21/07
Form Signed, DB		
Counter Index	11/6/07	11/6/07
GIS Index	11/6/07	11/6/07
Authorize Payment, DB	_____	_____
Archive Digital Files		
Collect Documents	11/6/07	11/6/07
Scanned	11-23-07	11-23-07
Copy For Filming		
Filed, DB		
Finish index (count unit)	11/6/07	11/6/07
Filmed (Archived), DB		
Document No's to Andrew		

(DB) = Entry needed in database (Access).

COMMENTS:

DATE 10/22/2007TOWNSHIP 14 SOUTH, RANGE 06 WEST, WILLAMETTE MERIDIAN, SECTION 01 CORNER N/A
DONATION LAND CLAIM JOHN T. FORTSON NO. 57 CORNER EAST-SOUTHEAST**COMMON CORNER(S):**

POINT ON THE NORTH LINE OF ORRIN BELKNAP D L C NO 56

RECORDS (INFORMATION IN BOLD ITALICS IS COUNTY STAFFS' INTERPRETATION OF THE RECORD)**BASED ON EXTENSIVE RESEARCH AND RECOVERY OF EVIDENCE, THIS OFFICE HAS DETERMINED THAT MOST GENERAL LAND OFFICE SURVEYORS MEASURED TO THE FACE OF BEARING TREES**

- [01] GENERAL LAND OFFICE (GLO) NOTES OF THE ORRIN BELKNAP DLC NO 56 BY DENNIS HATHORN, D S , DATED JANUARY 26, 1855 ***EAST ON NORTH LINE OF CLAIM . . . 56.26 CHAINS TO JOHN T. FORTSON'S S.E. CORNER.***
- [02] GENERAL LAND OFFICE (GLO) NOTES BY DENNIS HATHORN, D S , DATED JANUARY 27, 1855 ***SET A POST. MARKED A 30" OAK S50°E 76 LKS (50.16 FT.) AND A 20" OAK N50°W 92 LKS. (60.72 FT.)***.
- [03] COUNTY SURVEY NO 182 (OLD NO 82) FIELD NOTES (BOOK 6, PAGE 10) BY F M WILKES, C S , DATEC JULY 21, 1910 ***FOUND OLD STAKE AND BOTH GLO TREES ARE STUMPS. SET AN OAK STAKE. MARKED A 16" OAK N71°E 0.919 CHS. (60.65 FT.) AND A 14" OAK S40°W 0.626 CHS. (41.32 FT.)***
- [04] LOOSE LEAF NOTES FOR BELLFOUNTAIN ROAD BY W C GALLOWAY, C S , DATED JANUARY 27, 1931 ***FOUND AN OAK STAKE. FOUND A 16" OAK (CSBT) N71°E 0.919 CHS. (60.65 FT.) AND A 14" OAK S40°W 0.626 CHS. (41.32 FT.)***.
- [05] CORNER RESTORATION BOOK NO 1, PAGE 239 BY W C GALLOWAY, C S , DATED 1945 ***SET A 1" PIPE IN THE STAKE HOLE, 1 FT. EAST OF A POST FOUND A 16" OAK (CSBT) N71°E 0.919 CHS. (60.65 FT.) AND A 14" OAK S40°W 0.626 CHS. (41.32 FT.)***.
- [06] CORNER RESTORATION NO 2473 ***TRANSCRIBED FROM RECORD [04] AND MAY CONTAIN ERRORS AND/OR OMISSIONS.***
- [07] BENTON COUNTY MAPS 14-6-00001, 00002 AND 00003, NO DATE OF DRAFTSMAN GIVEN ***1" PIPE. 16" OAK (CSBT) N71°E 0.919 CHS. (60.65 FT.). 14" OAK (CSBT) S40°W 0.626 CHS. (41.32 FT.)***.
- [08] COUNTY SURVEY NO 8082 BY NORMAN SPRINGER, P L S , DATED AUGUST 10, 1987 ***FOUND A RUST RING IN A HOLE. SET A 5/8" X 30" IRON ROD WITH A YELLOW PLASTIC CAP MARKED "LS 1102", IN THE RUST RING. FOUND A 40" OAK N71°E 60.6 FT., WITH HEALED FACE.***

NOTES:

THIS IS A MICROSOFT WORD 2000 DOCUMENT NAMED "46857020" CREATED FROM A BOILER PLATE DOCUMENT NAMED "HISTORY", WHICH HAS A STYLESHEET NAMED "CORNER" ATTACHED TO IT

FIRM/AGENCY. BENTON COUNTY SURVEYOR'S OFFICE
ADDRESS 360 S W AVERY AVE CORVALLIS OR 97333, PH 766-6821
RESEARCH BY BERNARD S ALTENBACH, ENGINEER/SURVEY TECH
DATA ENTRY BY: SAME

BENTON COUNTY CORNER RESTORATION FORM, PAGE 1 OF 2, 146857020R2

SEE CORNER HISTORY FORM FOR RECORDS ETC.

CORNER RESTORATION FIELD BOOK NUMBER 26 PAGE(S) 13 DATE 11/06/2007
TOWNSHIP 14 SOUTH, RANGE 6 WEST, WILLAMETTE MERIDIAN, SECTION 01 CORNER NONE
DONATION LAND CLAIM JOHN T. FORTSON NO 57 CORNER EAST-SOUTHEAST
CONDITION REPORT , REFERENCED OUT , RENEWED XX, SURVEYED IN

LOCATION AND COMMENTS:

CORNER IS LOCATED IN A LEVEL AREA AND 5 FEET NORTH OF AN EAST/WEST GRAVEL ROAD TO REACH CORNER FROM THE JUNCTION OF BRUCE AND BELLFOUNTAIN ROADS, TRAVEL NORTHERLY ON BELLFOUNTAIN ROAD FOR 0.37 MILES, THEN LEFT (27274 BELLFOUNTAIN ROAD) ON GRAVEL DRIVEWAY FOR APPROXIMATELY 400 FEET TO CORNER ON NORTH SIDE OF ROAD CORNER IS POOR FOR PERMARKING AND GPS CONTROL

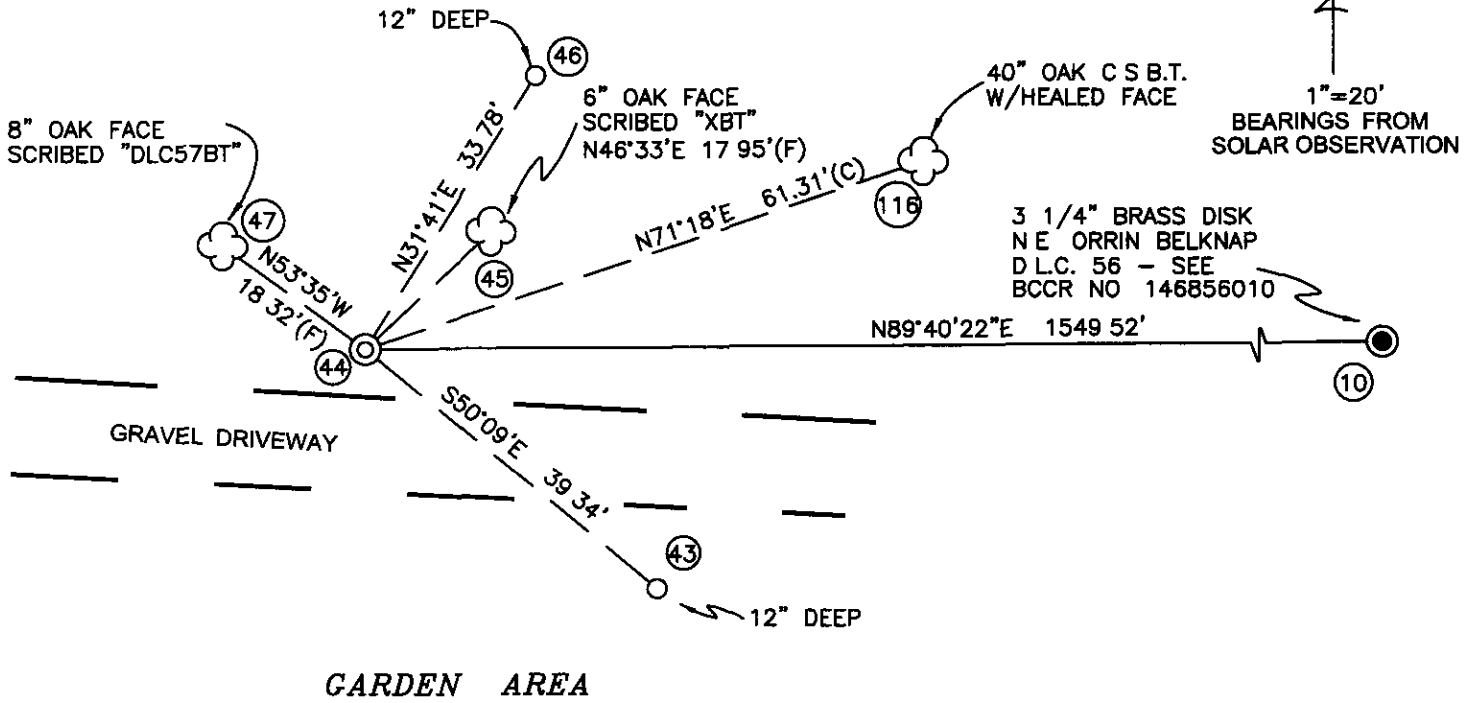
MONUMENTS AND ACCESSORIES FOUND (CONDITION AND SOURCE):

- 1 FOUND 5/8" X 30" IRON ROD WITH YELLOW PLASTIC CAP MARKED "LS1102", 2" BELOW GROUND LEVEL FOR CORNER POSITION
(SET POST PER RECORD [02])
(FOUND OLD POST AND SET NEW OAK STAKE PER RECORD [03])
(FOUND OAK STAKE PER RECORD [04])
(SET 1" PIPE IN STAKE HOLE PER RECORD [05])
(1" PIPE PER RECORD [07])
(FOUND RUST RING IN HOLE, SET A 5/8" X 30" IRON ROD WITH YELLOW PLASTIC CAP MARKED "LS1102" PER RECORD [08])
- 2 FOUND 40" W OAK C S B T WITH HEALED FACE, N71°18'E, 61.31 FEET TO CENTER SET P K NAIL AND BRASS WASHER IN NORTHWESTERLY BASE FOR DISTANCE MEASUREMENT
(MARKED 16" OAK, N71°E, 60.65 FEET PER RECORD [03])
(FOUND 16" OAK, N71°E, 60.65 FEET PER RECORDS [04], [05] AND [07])
(FOUND 40" OAK, N71°E, 60.6 FEET WITH HEALED FACE PER RECORD [08])
- 3 FOUND 3 1/4" BRASS DISK AT THE NORTHEAST CORNER OF THE ORRIN BELKNAP DLC NO 56. N89°40'22"E, 1549.52 FEET (EAST, 1552.32 FEET PER RECORD [01])
(SET 3/4" X 36" PIPE, N89°37'E, 1547.30 FEET PER RECORD [03])
(3/4" PIPE, EASTERLY, 1550.60 FEET PER RECORD [04])
(3/4" PIPE, N89°37'E, 1550.60 FEET PER RECORD [07])
(3/4" IRON PIPE, N89°42'03"E, 1549.73 FEET PER RECORD [08])

MONUMENT SET (PROCEDURES AND DESCRIPTION):

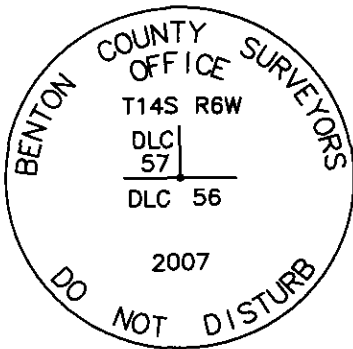
HELD THE 5/8" X 30" IRON ROD AS SET PER RECORD [08] FOR THE CORNER POSITION REMOVED IRON ROD AND SET A 2" X 31 1/2" GALVANIZED IRON PIPE WITH A 3 1/4" BRASS DISK CONCRETED IN THE TOP, 6" BELOW GROUND LEVEL AND MARKED AS SHOWN ON PAGE 2 OF 2 REMOVED THE IRON ROD SET IN SAID RECORD [08] FROM THE AREA SET A 6 FOOT ORANGE CARSONITE "SURVEY MARKER" POST 0.5 FEET SOUTH OF NEW MONUMENT

HARDWOODS, CONIFERS AND BRUSH



GARDEN AREA

MONUMENT DETAIL



3 1/4" BRASS DISK

LEGEND

- SET 5/8" X 30" REBAR WITH YELLOW PLASTIC CAP MKD "BENTON COUNTY SURVEYOR"
- (F) MEASUREMENT TO FACE
- (C) MEASUREMENT TO CENTER
- ⊙ GOVERNMENT MONUMENT SET AS SHOWN
- GOVERNMENT MONUMENT FOUND AS SHOWN
- ☼ BEARING TREE AS NOTED
- C.S.B.T. COUNTY SURVEYORS BEARING TREE
- BCCR BENTON COUNTY CORNER RESTORATION

NEW ACCESSORIES:

- 1 SET REBAR (SEE LEGEND) 12" BELOW GROUND LEVEL N31°41'E, 33.78 FEET
- 2 SET REBAR (SEE LEGEND) 12" BELOW GROUND LEVEL S50°09'E, 39.34 FEET
- 3 6" OAK FACE SCRIBED "XBT" N46°33'E, 17.95 FEET TO FACE. SET ALUMINUM NAIL AND BRASS WASHER BELOW SCRIBING FOR DISTANCE AND ANGLE MEASUREMENT
- 4 8" OAK FACE SCRIBED "DLC57BT" N53°35'W, 18.32 FEET TO FACE. SET ALUMINUM NAIL AND BRASS WASHER BELOW SCRIBING FOR DISTANCE AND ANGLE MEASUREMENT

NOTES.

COMPASS DECLINATION IS 20° EAST. ALL MEASURED DISTANCES AND BEARINGS ARE TO THE CENTER OF THE OBJECT, UNLESS OTHERWISE NOTED. ALL BEARING TREES ARE PAINTED AND HAVE A B.T. TAG ATTACHED, FACING THE CORNER UNLESS OTHERWISE NOTED. ALL NEW BEARING TREES HAVE A BRASS WASHER (STAMPED "BENTON COUNTY SURVEYOR") ATTACHED BY AN ALUMINUM NAIL TO THE FACE, BELOW THE "BT" FOR DISTANCE AND ANGLE MEASUREMENT UNLESS OTHERWISE NOTED. THE DRAWING IS FROM AUTOCAD RELEASE 2008.

THE RESTORATION PERFORMED AT THE DIRECTION AND APPROVAL OF THE BENTON COUNTY SURVEYOR _____

REGISTERED
PROFESSIONAL
LAND SURVEYOR

FIRM/AGENCY: BENTON COUNTY SURVEYOR'S OFFICE
 ADDRESS: 360 S.W. AVERY AVE. CORVALLIS OR 97333, PH. 766-6821
 PRESENT: DAVID M DEAN, P.L.S AND JOE MARDIS, P.L.S.
 EQUIPMENT: LEICA TCR 1105 WITH TDS ON BOARD

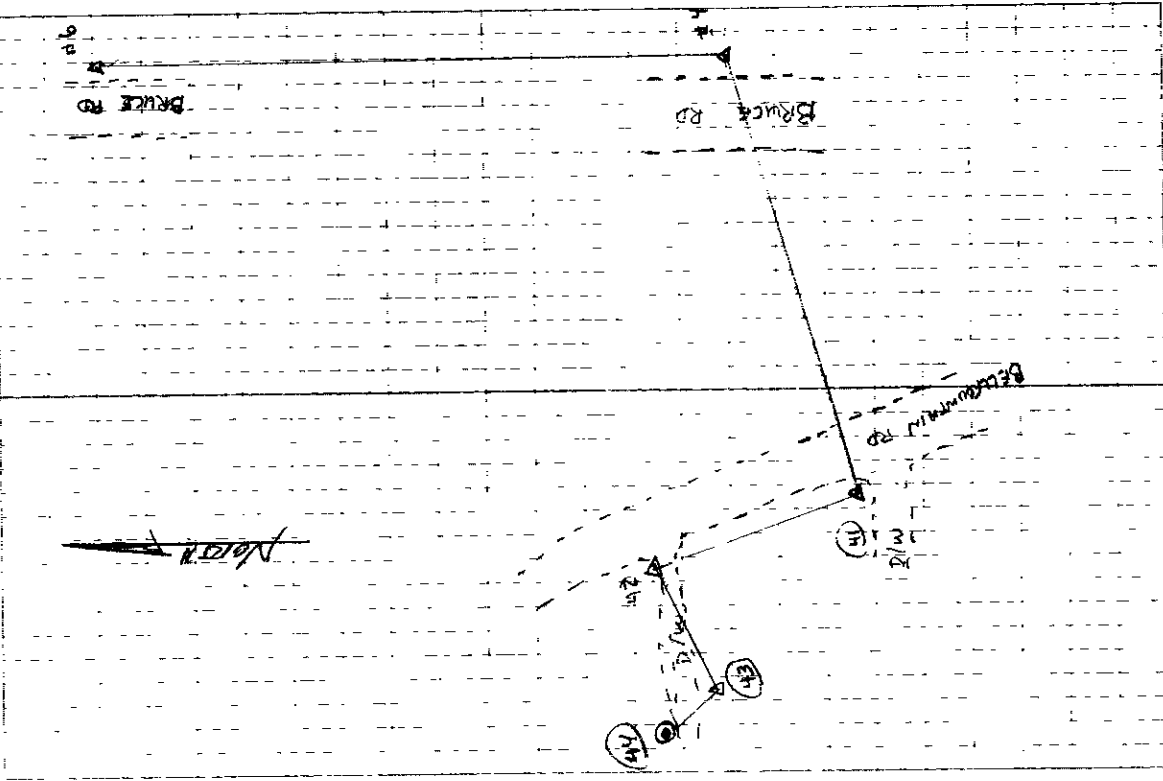
OREGON
JULY 13, 1984
DAVID M. DEAN
2090

RENEWAL DATE: 12/31/07

11/6/07 26/12

D. DEAN
J. MARDAS

Cool, Fog
47°F, 29.8" Hg
LEICA TORIUS/TDS



TRAV FM NE DIC 56 TO ESE DIC 57

7 145 R6LW

42) SET 5/8" x 30" IR
W/PPC "LS 100"
2' @ ESE DIC 57

41-42-43

43) SET 5/8" x 30" IR
W/PPC 12.8'

41-42-43

44) SET PIX W SIDE BELL FOUNTAIN
RD & N SIDE D/10

4-41-42

45) SET SPIKE W SIDE BELL FOUNTAIN
RD & N SIDE D/10

6) SPIKE - SEE PG 8

4) SPIKE - SEE PG 8

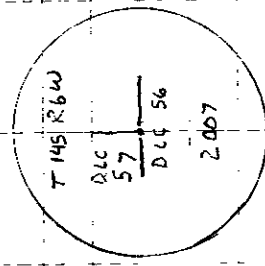
6-4-41

146857020

REMANUFACTURING ESE JOHN FORTSON

DLC, NO 57 THIS R6W

FD 5/8" ASO IR W/TYPE MKD "LS 1102 2' AREA"
 GROUND LEVEL AND 5' N OF GRAVEL DIA
 FOR COR. POSITION
 GLO ACCESSORIES AND 1 CSBT ARE NOW
 MISSING FD 40" W OAK CSBT
 (N 71° E 60.65'), REMOVED IR & PLASTIC
 CAP AND SET 2" X 3 1/2" GIP w/ 3/4"
 BRASS DISK CONC. IN TOP, 6" BELOW
 GROUND LEVEL & MKD AS SHOWN
 REMOVED IR FROM AREA SET 6'
 ORANGE CARBONITE 'SURVEY MARKER'
 POST 0' S OF SOUTH DE NEW MON
 POOR FOR PREMARKING AND GPS
 CONTROL



44

3/4" BRASS DISK

Cont. FOG
 47°F, 29.8' H9
 LEICA TCR 1105/TDS

11/8/07
 D DEAN
 J. MARDIS

26/13

