

146857040

CORNER FILE TRACKING

H:\Survey\Corners\Misc\Filetrac2.doc
06/15/2003

CORNER NUMBER
146857040

STEP	HISTORY()	RESTORATION()
Form Prepared, DB	8/17/07	8/22/07
Field Inspection, DB	8/21/07	8/21/07
Form Checked, DB	8/31/07	8/31/07
Form Edited, DB	8/31/07	8/31/07
Form Signed, DB	8/31/07	8/31/07
Counter Index	8/22/07	8/22/07
GIS Index	8/22/07	8/22/07
Authorize Payment, DB	—	—
Archive Digital Files	8/31/07	8/31/07
Collect Documents	8/31/07	8/31/07
Scanned	9-11-07	9-11-07
Copy For Filming	8/31/07	8/31/07
Filed, DB		
Finish index (count unit)	8/21/07	8/21/07
Filmed (Archived), DB		
Document No's to Andrew		

(DB) = Entry needed in database (Access).

COMMENTS:

DATE 08/17/2007TOWNSHIP 14 SOUTH, RANGE 06 WEST, WILLAMETTE MERIDIAN; SECTION 11 CORNER NONE
DONATION LAND CLAIM JOHN T. FORTSON NO. 57 CORNER MOST SOUTH COR.**COMMON CORNER(S):**POINT ON WEST LINE OF ORRIN BELKNAPS D L C 56
THE MOST EAST NORTHEAST CORNER OF GEORGE SMITH D L C 63**RECORDS (INFORMATION IN BOLD ITALICS IS COUNTY STAFFS' INTERPRETATION OF THE RECORD)**

BASED ON EXTENSIVE RESEARCH AND RECOVERY OF EVIDENCE, THIS OFFICE HAS DETERMINED THAT MOST GENERAL LAND OFFICE SURVEYORS MEASURED TO THE FACE OF BEARING TREES

- [01] GENERAL LAND OFFICE (GLO) NOTES OF THE JOHN T FORTSON DONATION LAND CLAIM (DLC) NO 57 BY DENNIS HATHORN, D S , DATED JANUARY 27, 1855 *SET POST FROM WHICH AN OAK 15" IN DIA. BEARS N55°W, 33 LKS. (21.78 FEET); AN OAK 18" IN DIA. BEARS S33°E, 195 LKS. (128.7 FEET).*
- [02] COUNTY SURVEY NO 307 (OLD NO 149) FIELD NOTES (FIELD BOOK 13, PAGE 1-7) BY J A GONONG, D C S , DATED APRIL 23, 1912 *STRIKING 12"x12" STONE FOR COR.*
- [03] BENTON COUNTY MAP NO 14-6-00006 NO DATE OR DRAFTMAN GIVEN *STONE 12"x12"*.
- [04] COUNTY ROAD NO 166 FIELD NOTES (FIELD BOOK NO 21, PAGE 35) BY W C GALLOWAY, C S , NO DATE GIVEN *MOST S. COR. OF J. T. FORTSON NO. 57. STONE 18" X 10" X 12". 0.353 CHS (23.30 FEET) FROM TREE CENTER.*
- [05] COUNTY ROAD NO 166 MAP BY W C GALLOWAY, C S , DATED JUNE 6, 1916 *STONE 18" X 10" X 12"*.
- [06] BENTON COUNTY CORNER RESTORATION BOOK NO 1, PAGE 161 BY J A GONONG, D C S , DATED JUNE 1916 *THE MOST SOUTH CORNER OF JOHN T. FORTSON DLC 57 T14-6. STONE 18"x10"x12". OAK 15" IN DIA. BEARS N55°W, 0.33 CHS. (21.78 FEET) STANDING, TREE TO BE TAKEN OUT OF ROAD; OAK 18" IN DIA. BEARS S33°E 1.95 CHS. (128.7 FEET) STANDING. SET 1 1/4" PIPE, N50°E, 0.303 CHS (20.00 FEET); SET 1/4" X 1 1/2" IRON, S50°W, 0.304 CHS (20.06 FEET); FIR 3", S52°30'W, 0.373 CHS (24.62 FEET) NOT MARKED; OAK 12", N56°20'W, 1.096 CHS (72.34 FEET) NOT MARKED.*
- [07] COUNTY SURVEY NO 854 (OLD NO 149) FIELD NOTES (FIELD BOOK 30, PAGE 1-3) BY W W LARSON, D C S , DATED APRIL 27, 1923 *STONE 18"x10"x12". OAK 15" N55°W, 0.33 CHS. (21.78 FEET); OAK 18" S33°E, 1.95 CHS. (128.7 FEET).*
- [08] BENTON COUNTY MAP NO 14-6-00001 NO DATE OR DRAFTMAN GIVEN *STONE 18"x10"x12". OAK 15" N55°W, 0.33 CHS. (21.78 FEET); OAK 18" S33°E, 1.95 CHS. (128.7 FEET).*
- [09] BENTON COUNTY MAP NO 14-6-00002 NO DATE OR DRAFTMAN GIVEN *STONE 18"x10"x12". OAK 15" N55°W, 0.33 CHS. (21.78 FEET); OAK 18" S33°E, 1.95 CHS. (128.7 FEET).*
- [10] BENTON COUNTY MAP NO 14-6-00003 NO DATE OR DRAFTMAN GIVEN *STONE 18"x10"x12". OAK 15" N55°W, 0.33 CHS. (21.78 FEET); OAK 18" S33°E, 1.95 CHS. (128.7 FEET).*
- [11] COUNTY ROAD NO 46330 (OLD NO ROUTE 3-B) FIELD NOTES (LOOSE LEAF), NO DATE OR CREW GIVEN *STONE IN ROAD 18"x10"x12". MOST EASTERLY NE COR. #63 OR MOST SOUTHERLY COR. #57 T14S R6W.*
- [12] PLAN OF COUNTY ROAD NO 46330 (ORIGINAL ROAD NO ROUTE 3, SECTION B) BY C C HANSON, COUNTY ENGINEER, DATED MAY 1967 *FOUND STONE MOST EASTERLY N.E. COR. ON N.E. LINE GEORGE SMITH D.L.C. 63 0.28 FEET RIGHT OF STATION 25+17.14.*

NOTES:

THIS IS A MICROSOFT WORD 2003 DOCUMENT NAMED "46857040" CREATED FROM A BOILER PLATE DOCUMENT NAMED "HISTORY", WHICH HAS A STYLESHEET NAMED "CORNER" ATTACHED TO IT

FIRM/AGENCY: BENTON COUNTY SURVEYOR'S OFFICE
ADDRESS: 360 S W AVERY AVE CORVALLIS OR 97333, PH 766-6821
RESEARCH BY: CODY WHEELER, SURVEY TECH
DATA ENTRY BY: SAME

BENTON COUNTY CORNER RESTORATION FORM, PAGE 1 OF 2, 146857040R2
SEE CORNER HISTORY FORM FOR RECORDS ETC.

CORNER RESTORATION FIELD BOOK NUMBER 25 PAGE(S) 67 DATE 08/21/2007
TOWNSHIP 14 SOUTH, RANGE 6 WEST, WILLAMETTE MERIDIAN; SECTION 11 CORNER NONE
DONATION LAND CLAIM JOHN T. FORTSON NO. 57 CORNER MOST S SE
CONDITION REPORT , REFERENCED OUT ; RENEWED XX, SURVEYED IN

LOCATION AND COMMENTS:

CORNER IS LOCATED IN THE CENTER OF AS TRAVELED REESE CREEK ROAD TO REACH CORNER FROM THE JUNCTION OF DAWSON AND REESE CREEK ROADS, TRAVEL NORTHERLY ON REESE CREEK ROAD FOR 0.48 MILES TO CORNER. CORNER IS GOOD FOR PREMARKING AND GPS CONTROL.

MONUMENTS AND ACCESSORIES FOUND (CONDITION AND SOURCE):

- 1 FOUND 10" X 8" X 6" UNMARKED, BROKEN AND DISTURBED STONE, N22°E, 0.9 FEET AND 28" BELOW ROAD SURFACE FROM CALCULATED CORNER POSITION. THIS STONE MAY BE THAT STONE REFERED TO IN RECORDS [02] AND [03]
- 2 FOUND EAST NORTHEAST CORNER OF THE GEORGE SMITH DLC NO. 63, N42°08'49"W, 1207.22 FEET. CORNER IS MARKED BY A 3 1/4" BRASS DISK CONCRETED IN 2" GALVANIZED IRON PIPE. SEE RESTORATION NO. 146863070 (N42°30'W, 1201.2 FEET PER RECORD [01]) (STONE, N42°14'W, 1205.09 FEET PER RECORDS [03] AND [07] - [10]) (STONE, N42°08'49"W, 1207.22 FEET [CALCULATED] PER RECORD [12])
- 3 FOUND 3/4" IRON ROD 2" BELOW GROUND LEVEL, S44°03'22"E, 588.71 FEET. IRON ROD AT ROAD STATION 19+29.43 RIGHT (SET 3/4" IRON ROD, S43°58'32"E, 588.46 FEET [CALCULATED] PER RECORD [12])
- 4 FOUND 3/4" IRON ROD 2" BELOW GROUND LEVEL, N30°46'32"W, 164.84 FEET. IRON ROD AT ROAD STATION 26+79.28 RIGHT (SET 3/4" IRON ROD, N30°41'37"W, 164.84 FEET [CALCULATED] PER RECORD [12])

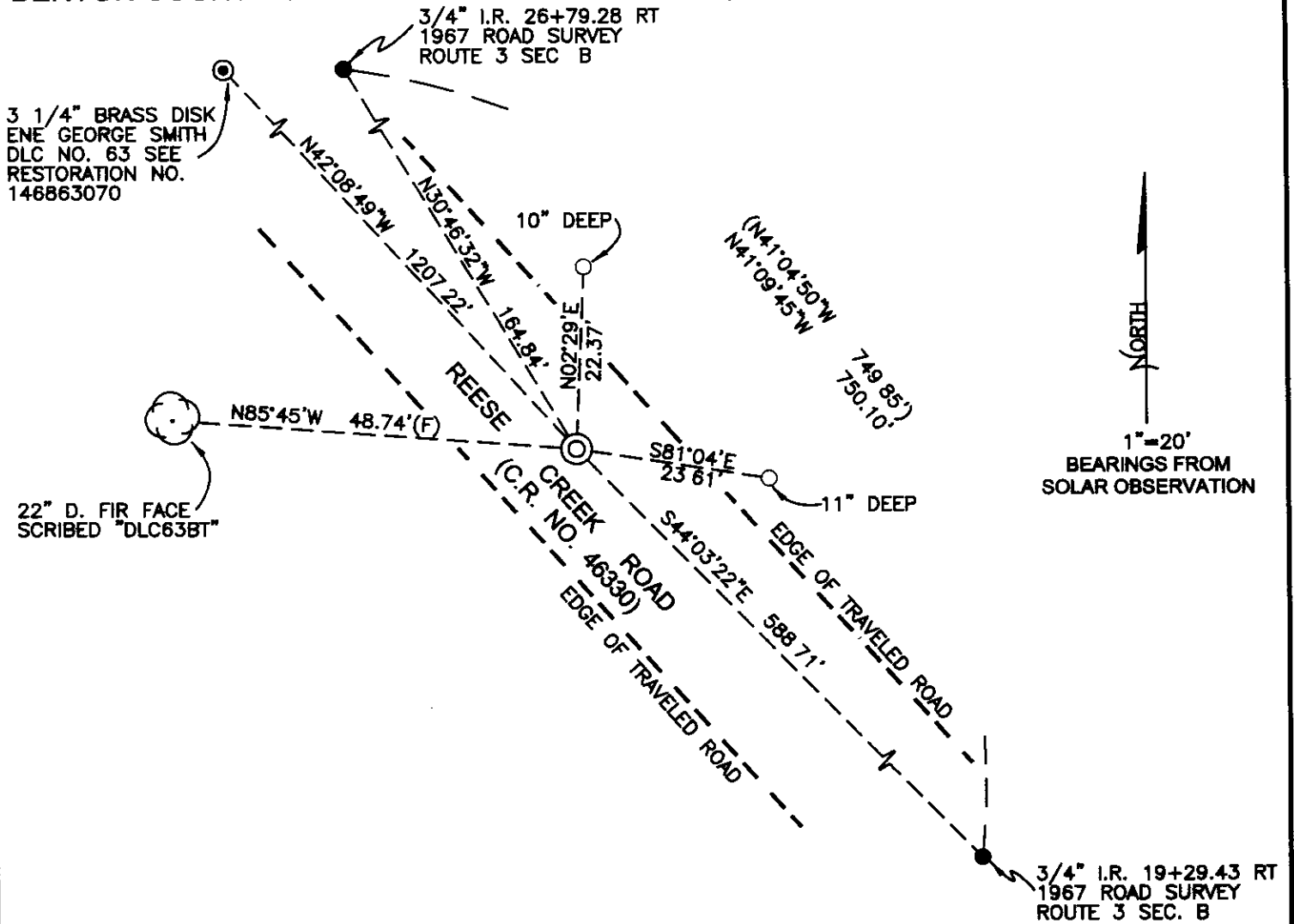
MONUMENT SET (PROCEDURES AND DESCRIPTION):

NO EVIDENCE COULD BE FOUND OF THE GLO OR COUNTY SURVEYOR'S MONUMENTS OR ACCESSORIES AFTER A THOROUGH SEARCH OF THE AREA. THE 10" X 8" X 6" DISTURBED STONE MAY BE THE STONE REFERED TO IN RECORDS [02] AND [03]. HOWEVER, WE HAVE REJECTED THIS STONE FOR THE CORNER POSITION AS IT WAS CLEARLY DISLODGED FROM AN UPRIGHT POSITION.

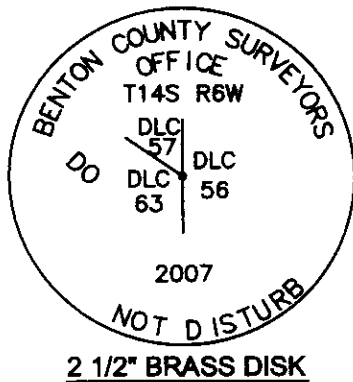
POSITION OF THE SUBJECT CORNER WAS CALCULATED BASE ON RECORDS [11] AND [12] AS FOLLOWS

- 1 FOUND AND TIED THE RIGHT-OF-WAY MONUMENTS AT ROAD STATIONS 19+29.43 RT AND 26+79.28 RT
- 2 FROM 26+79.28 RT CALCULATED A POINT ON THE RIGHT RIGHT-OF-WAY AT STATION 25+17.14 RT (162.14 FEET)
- 3 FROM STATION 25+17.14 RT CALCULATED CORNER POSITION AT RIGHT ANGLE TO RIGHT-OF-WAY A DISTANCE OF 29.72 FEET

AT CALCULATED POSITION SET A 1/2" X 18" COPPER WELDED ROD IN CONCRETE WITH A 2 1/2" BRASS DISK FIXED TO THE TOP, 5 1/2" BELOW ROAD SURFACE, MARKED AS SHOWN ON PAGE 2 OF 2. SET A BOTTOM FLANG STEEL MONUMENT BOX OVER NEW MONUMENT AND FLUSH WITH ROAD SURFACE. THE 10" X 8" X 6" STONE WAS REMOVED FROM THE AREA. REFERENCED CORNER POSITION AS SHOWN ON PAGE 2 OF 2.



MONUMENT DETAIL



LEGEND

- SET 5/8" X 30" REBAR WITH YELLOW PLASTIC CAP MKD "BENTON COUNTY SURVEYOR"
- FOUND MONUMENT AS NOTED
- (F) MEASUREMENT TO FACE
- ⊙ GOVERNMENT MONUMENT SET AS SHOWN
- ⊙ GOVERNMENT MONUMENT FOUND AS SHOWN
- ⊙ BEARING TREE AS NOTED
- C.S.B.T. COUNTY SURVEYORS BEARING TREE
- GLO GENERAL LAND OFFICE
- () RECORD DATA PER ROUTE 3 SEC. B (C.R. 46330)

NEW ACCESSORIES:

1. SET REBAR (SEE LEGEND) N2°29'E, 22.37 FEET AND 10" BELOW GROUND LEVEL AT SHOLDER OF ROAD.
2. SET REBAR (SEE LEGEND) S81°04'E, 23.61 FEET AND 11" BELOW GROUND LEVEL AT SHOULDER OF ROAD.
3. FACE SCRIBED 22" D. FIR, N85°45'W, 48.74 FEET TO FACE. MARKED "DLC 63 BT" AND SET ALUMINUM NAIL AND PLASTIC WASHER AT BOTTOM OF BLAZE BELOW SCRIBING FOR DISTANCE AND ANGLE MEASUREMENT.

NOTES

COMPASS DECLINATION IS 20° EAST. ALL MEASURED DISTANCES AND BEARINGS ARE TO THE CENTER OF THE OBJECT, UNLESS OTHERWISE NOTED. ALL BEARING TREES ARE PAINTED AND HAVE A B.T. TAG ATTACHED, FACING THE CORNER UNLESS OTHERWISE NOTED. ALL NEW BEARING TREES HAVE A PLASTIC WASHER (STAMPED "BENTON COUNTY SURVEYOR CORNER RESTORATION") ATTACHED (BY ALUMINUM NAIL) TO THE FACE, BELOW THE "BT" FOR DISTANCE AND ANGLE MEASUREMENT UNLESS OTHERWISE NOTED. THE DRAWING IS FROM AUTOCAD RELEASE 2006.

THIS RESTORATION WAS PERFORMED AT THE DIRECTION AND APPROVAL OF THE BENTON COUNTY SURVEYOR, David M. Dean

REGISTERED
PROFESSIONAL
LAND SURVEYOR

8/31/07 David M. Dean

OREGON
JULY 13, 1984
DAVID M. DEAN
2090

RENEWAL DATE: 12/31/07

FIRM/AGENCY BENTON COUNTY SURVEYOR'S OFFICE.
ADDRESS 360 S.W. AVERY AVE. CORVALLIS OR 97333; PH. 766-6821.
PRESENT DAVID M. DEAN, P.L.S., BERNIE ALTENBACH AND CODY WHEELER, SURVEY TECHNICIANS.
EQUIPMENT. LEICA TCR 1105 TOTAL STATION W/TDS SOFTWARE AND RECON DATA COLLECTOR.

C.S. #113
W.C. Galloway
Albert Shriver
G.H. Bath
July 27 1911.

N.W. corner of Wm. Matzger D.L.C. 50 T 12-6
Original oak tree 36" for corner. which checks from witness trees
Oak 12" in dia. bears S. 40° E. 94 chs. std.
" 30" " " " N. 88° W. 1.91 " "

North Exterior corner of Wm Matzger D.L.C. 50 T 12-6
Original stone 12"x14"x? Marked C 50
Oak 24" in dia. bears S. 85° E. 2.22 chs. Out. tree.

C.S. #76
Witnesses W.C. Galloway c.s.
J.W. Dodge
T. A. Legsdon
Oct. 1910.

S.W. corner of T.M. Reed D.L.C. 61 T. 11-5
Set a Stone for corner. Set by proportion, fence lines etc.
A pipe on west claim line North 7.76 chs.
A 3/4" under stone on S. claim line S 89° 51' E. 10.978 chs. From this pipe -
A pear tree 12° S. 82° 20' W. 462 chs.

C.S. #138
F. Marion Wilkes D.C.S.
Sept. 1913.
J. Roy Rickard

N.W. corner of Mark Cahoon D.L.C. 58 T 10-4
Set 4"x4"x30" heart oak stake mkd. c.s.
Oak 24" in dia. bears S. 83° E. 945 chs. & of B.T. for line Orig. tree
" 14" " " " N 74 1/2° W. 1.21 " " " " " " " "

Resurvey Road 166
W.C. Galloway c.s.
June 1916
John Ehrenstam
Archite. Permi.

The Most South corner of John T. Fortson D.L.C. 57 T 14-6
Stone 18"x10"x12"
Oak 15" in dia. bears N. 55° W. .33 chs. std. (3.53 to cen. of tree
" 18" " " " S. 33° E 1.95 " " (Set 1 1/2" pipe N 50° E. 303
" 18" iron S. 50° W. 304
" 3" S. 52° 30' W. 574 not mhd
Oak 12" N 58° 20' W. 1.092
Tree 200
taken out
of tree

C.S. #149
J.A. Gonong
Apr. 23, 1912
Bristow ?

N.W. corner of H. C. Buckingham D.L.C. 53 T 14-6
Set a Stone 18"x18"x 24" Orig. stone, S.W. cor. of Orrin Bellknap Cl. referenced with pipe
Oak 24" in dia. bears N. 19° E. 1.58 chs. std. S.W. stump (see next page for
" 24" " " " S. 85° 10' E. 6.50 " Oak out for road (cor. 12.54 E. 57.16)

S.E. of J.W. Starr D.L.C. 54 T. 14-6
Orig. stone 6"x6"x24"
Oak 17" in dia. bears S. 17° W. 2.143 chs.
" 34" " " " S. 60 3/4° W. 3.512 "

N.E. corner of J.W. Starr D.L.C. 54 T. 14-6
Set 5"x5"x36" oak stake Both stumps std.
Oak 20" in dia. bears N. 59° 40' E. 482 chs.
Fir 30" " " " S. 38° 25' E. 408 "

Most E. N.E. cor. of Geo. Smith D.L.C. 63 T. 14-6
Stone 24"x17"x14"
Ash 12" in dia. bears N. 26° 25' E. 490 chs.

Interior Corner of Geo. Smith D.L.C. 63 T 14-6
Stone 16"x8"x8"
Fir 24" in dia. bears N. 3° 05' E. 550 chs.
" 24" " " " S. 75° 45' E. 1784 "

Most South corner of John T. Fortson DLC 57, Twp. 14-6

2471

Reestablishment by W. C. Galloway

June 1916

Stone 18" x 10" x 12"

Oak 15" in diam bears N 55° W

Oak 18" in diam bears S 33° E

.33 chains(standing)
1.95 chains(standing)

Witnesses John Cheseaman and Archie Pervin

Replacement

Date _____

Set 1 1/4" pipe N 50° E .303 chains

Set 1 1/4" x 1 1/2" iron S. 50° W .304 chains

Fir 3" in diam bears S 52° 30' W

Oak 12" in diam bears N 58° 20' W

.373 chains(not ~~red.~~)
1.096 chains(not ~~red.~~)

14GS57040

REMOVING MOST SLY CAR JOHN FORTSON

DLC No 57 795 RW

DLC POSITION OF CORE FROM 1967 COUNTY

ROAD SURVEY FD P1 17x29⁴³ RT AND 20779²⁸ RT

30' x 10' x 6" "unmarked" BRICK

STONE - DISTURBED LAYING ON SIDE OF

NW OF PILE POSITION AND HELD DLC POSITION

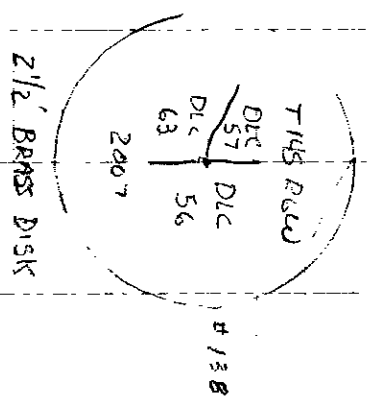
FOR CORE, REMOVED STONE SET 8x18 COPPER

WELDED ROD WITH 2 1/2" BRASS DISK SET 5 1/2'

BETWEEN ROAD SURFACE, PLACED BOTTOM

FLANGE MON BOX OVER COR. FURNISH

w/ ROAD SURFACE.



CLOUDY, WARM
72°F, 29.9" Hg
LEICHTER 1155 / 7053 REGION

B/2/1/67
D. DEAN
C. WHEELER
B. ALTSBACH

25/67

