

CORNER FILE TRACKING

H:\Survey\Corners\Misc\Filetrac2.doc

06/15/2003

CORNER NUMBER
146861030

STEP	HISTORY()	RESTORATION()
Form Prepared, DB	6/01/07	6/7/07
Field Inspection, DB	6/7/07	6/7/07
Form Checked, DB	6/18/07	6/18/07
Form Edited, DB	6/18/07	6/18/07
Form Signed, DB	6/20/07	6/20/07
Counter Index	6/7/07	6/7/07
GIS Index	6/7/07	6/7/07
Authorize Payment, DB	—	—
Archive Digital Files	6/20/07	6/20/07
Collect Documents	6/7/07	6/7/07
Scanned	7/6/07	7/6/07
Copy For Filming	6/20/07	6/20/07
Filed, DB		
Finish index (count unit)	6/7/07	6/7/07
Filmed (Archived), DB		
Document No's to Andrew		

(DB) = Entry needed in database (Access).

COMMENTS:

C.S. 255 Con.
by Walter W. Larsen
Witness - Mr. Johnson
924. Apr. 26, 1926

1/4 Sec. cor. between Secs. 11 & 14 T. 11 S. R. 6 W. W. M.
Set 1" rod from which a
Fir 11" in diameter bears N. 55° W. .35 chains std.
" 20" " " " S. 7° E .46 " std.
Double Maple " Mag. North .15 " marked.

C.S. 145 Con.
by W. W. L.
Wil. Fred Buchanan

Southeast corner of Geo. H. Herbert Cl. 40 T. 13 S. R. 5 W.
Set a 3/4" pipe from which a
Sarris 4" in diameter bears N 50° W .050 chs.
Oak 30" " " " N 80 1/2° W 3.595 chs. Std.

11
print.
down

North interior corner of Elizabeth Herbert Cl. 41 T. 13 S. R. 5 W.
Set a stake from which
an Alder 15" in diameter bears N 76° W .60 chains
a 3/4" pipe " North 1.68

11
Set a 1/2" pipe by a stone 8x8x12" from which
an Ash bears West .068 chains Mkd
an Oak 20" in diameter bears N 47 1/2° W. 7.32 Std.
" " 36" " " " S 89 1/2° W. (8.46) Std.

Northeast corner of Geo. H. Herbert Cl. 40, T. 13 S. R. 5 W.
Set a 1/2" pipe by a stone 8x8x12" from which
an Ash bears West .068 chains Mkd
an Oak 20" in diameter bears N 47 1/2° W. 7.32 Std.
" " 36" " " " S 89 1/2° W. (8.46) Std.

C.S.
W. W. Larsen
Witness - Malcolm
Mr. Holter
June 15, 1926

Northwest corner of Samuel Haptenstall Cl. 55, T. 14 S. R. 6 W.
Set a stone 10"x12"x8" and original stake
Fir 20" in diameter bears S 61° E .23 chs mkd
" stump 48" " " " West .19 stump
Maple stump decayed but present.

11 →

Southwest corner of M. L. Charles Cl. 61, T. 14 S. R. 6 W.
Set 3/4" pipe from which a
Double fir 14" in diameter bears N 62° E .10 chs.
Fir 8" " " " N 8° W. 0.125 "
" 40" " " " N 24° E. 2.10 " std.
" 40" " " " S 60° E 1.32 "

11
1926.

Southeast corner of M. L. Charles Cl. 61, T. 14 S. R. 6 W.
Set a 3/4" pipe from which a
Fir 30" in diameter bears N 45° W. .03 chs.
Corner post " S. 45° E .05 "
old stump holes present

11

Northeast corner of Wm. Mc Lagan Cl. 52, T. 14 S. R. 6 W.
Set 3/4" pipe by original stone
Fir 24" in diameter bears N. 72° E. .125 chs
Corner post " N 78° W. .045 "
3/4" pipe " N 88° 18' W. 2.01 "

Southwest corner of M. L. Charles Cl 61, Twp. 14 S., R. 6 W.

2480

Reestablishment by ~~W. C. Galloway~~
W. W. LARSEN.

June 15, 1926

Set $\frac{3}{4}$ " pipe

Double Fir 14" in diam bears N 62° E

.10 chains

Fir 8" in diam bears N 8° W

.125 chains

Fir 40" in diam bears N 24° E

2.10 chains (standing)

Fir 40" in diam bears S 60° E

1.32 chains (standing)

Witness Mr. Holter

146861030

REMONUMENTING SW M.L. CHARLES D.L.C. 61

T 145 Row

FOUND 3/4" X 3/4" IRON PIPE 2" ABOVE GROUND

LEVEL FOR CORNER POSITION - UNDISTURBED AND

FIRMLY SET. Fd NE GLO BT - Now T 5' D. FIR

STUMP - ROTTEN & SHAKENED NO MKS VISIBLE. Fd

POSSIBLE SE GLO BT - Now 66" D. FIR STUMP

NO VISIBLE MKS

Fd CS 980 BT 1/2" D. FIR STUMP WHICH USE

OPENED TO VISIBLE BACKCAST SCRIBING 10"

VERY ROTTEN D. FIR STUMP w/ LOOSE SMALL

2x4 w/ V. 1" S (NW BT) Fd 1/2" IR. w/ RBC

"NORTH STAR CONTROL" (N 16-31-47 E 208.48')

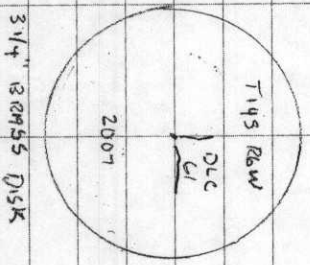
REMOVED IRON PIPE AND SET 2" X 3/8" G.I.P.

w/ 3/4" BRASS DISK CONC IN TOP 1" ↑

MKD AS SHOWN. SET 6' ORANGE CARBONITE

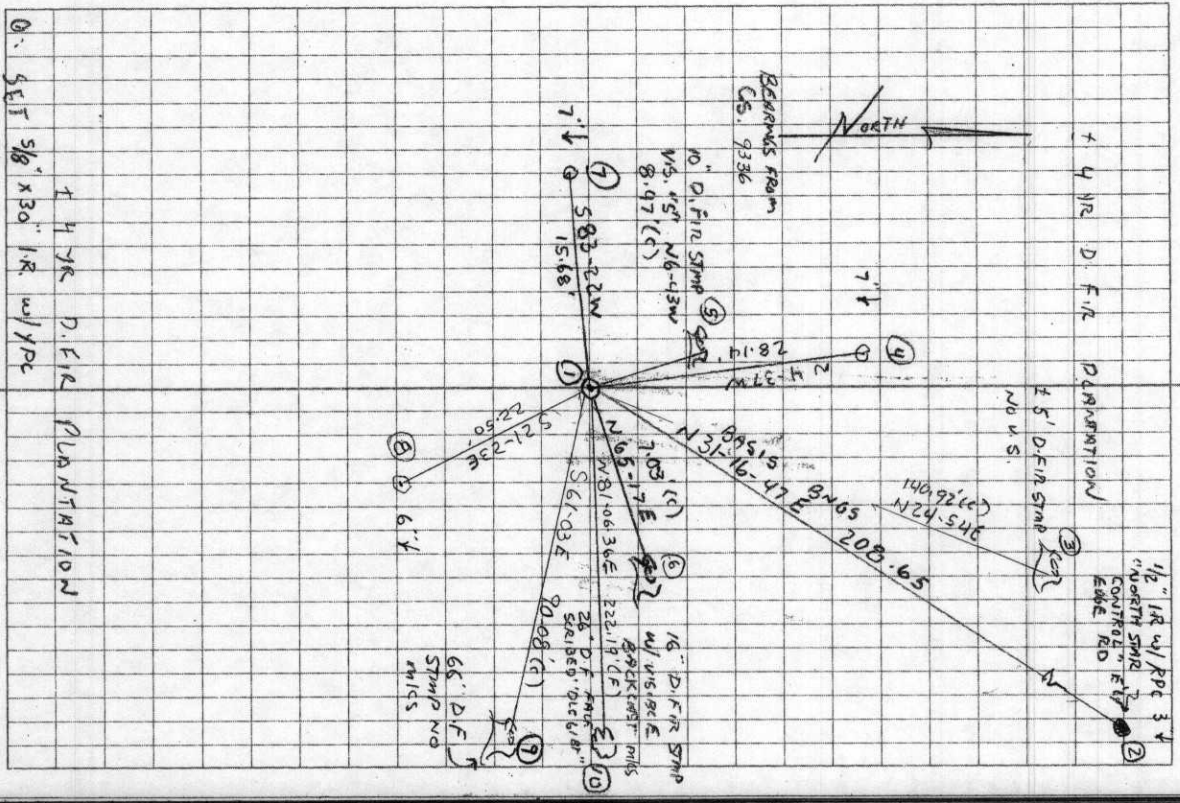
"SURVEY MARKER" POST 3' SOUTH. RESET

3/4" IR ON N SIDE NEW MON 4" ↓



GLDY, MIC
620 F (AM) 29.7 M9
LEICA TC1105/105

6/7/07
D. DEAN
B. ALTENBACH
25/35



DATE 06/01/2007TOWNSHIP 14 SOUTH, RANGE 06 WEST, WILLAMETTE MERIDIAN; SECTION 15 CORNER N/A
DONATION LAND CLAIM M. L. CHARLES NO. 61 CORNER SOUTHWEST**COMMON CORNER(S):**

NONE

RECORDS (INFORMATION IN BOLD ITALICS IS COUNTY STAFFS' INTERPRETATION OF THE RECORD)

BASED ON EXTENSIVE RESEARCH AND RECOVERY OF EVIDENCE, THIS OFFICE HAS DETERMINED THAT MOST GENERAL LAND OFFICE SURVEYORS MEASURED TO THE FACE OF BEARING TREES.

- [01] GENERAL LAND OFFICE (GLO) NOTES OF M L CHARLES DONATION LAND CLAIM NO 61 BY D HATHORN, D S , DATED JANUARY 31, 1955 SET A POST. MARKED AN 18" FIR N21°E 210 LKS. (138.60 FT.) AND A 20" FIR S55°E 126 LKS. (83.16 FT.).
- [02] COUNTY SURVEY NO 980 (OLD NO 336) BY W W LARSEN, D C S , NO DATE GIVEN SET A 3/4" PIPE. FOUND A 40" FIR (GLO BT) N24°E 2.10 CHS. (138.60 FT.), STANDING AND A 40" FIR (GLO BT) S60°E 1.32 CHS. (83.16 FT.), STANDING. MARKED A 14" DOUBLE FIR N62°E 0.10 CHS. (6.60 FT.) AND AN 8" FIR N08°W 0.125 CHS. (8.25 FT.).
- [03] CORNER RESTORATION BOOK NO 1, PAGE 183 BY W. W. LARSEN, D.C.S , DATED JUNE 15, 1926. SET A 3/4" PIPE. FOUND A 40" FIR (GLO BT) N24°E 2.10 CHS. (138.60 FT.), STANDING AND A 40" FIR (GLO BT) S60°E 1.32 CHS. (83.16 FT.), STANDING. MARKED A 14" DOUBLE FIR N62°E 0.10 CHS. (6.60 FT.) AND AN 8" FIR N08°W 0.125 CHS. (8.25 FT.).
- [04] CORNER RESTORATION NO 2480 TRANSCRIBED FROM RECORD [03] AND MAY CONTAIN ERRORS AND/OR OMISSIONS.
- [05] BENTON COUNTY MAP NO 14-6-00005, NO DATE OR DRAFTSMAN GIVEN 3/4" PIPE. 40" FIR (GLO BT) N24°E 2.10 CHS. (138.60 FT.). 40" FIR (GLO BT) S60°E 1.32 CHS. (83.16 FT.). 14" DOUBLE FIR (CSBT) N62°E 0.10 CHS. (6.60 FT.). 8" FIR (CSBT) N08°W 0.125 CHS. (8.25 FT.).
- [06] COUNTY SURVEY NO. 9336 BY TED LANGTON, P.L.S., DATED AUGUST 14, 1998 FOUND A 3/4" PIPE. FOUND A 60" D. FIR STUMP (GLO BT) N24°E 2.10 CHS. (138.60 FT.), NO MARKS, AN 18" D. FIR HIGH CUT STUMP (CSBT) N63°E 0.10 CHS. (6.60 FT.), WITH A HEALED FACE AND AN 8" D. FIR STUMP REMAINS N08°W 0.125 CHS. (8.25 FT.). SET A 1/2" ROD RM IN GRAVEL ROAD N31°16'47"E 208.48 FT.

NOTES:

THIS IS A MICROSOFT WORD 2000 DOCUMENT NAMED "46861030" CREATED FROM A BOILER PLATE DOCUMENT NAMED "HISTORY", WHICH HAS A STYLESHEET NAMED "CORNER" ATTACHED TO IT.

FIRM AGENCY: BENTON COUNTY SURVEYOR'S OFFICE
ADDRESS: 360 S W AVERY AVE CORVALLIS OR 97333, PH 766-6821
RESEARCH BY: BERNARD S ALTENBACH, ENGINEER/SURVEY TECH
DATA ENTRY BY: SAME

SEE CORNER HISTORY FORM FOR RECORDS ETC.

CORNER RESTORATION FIELD BOOK NUMBER 25 PAGE(S) 35 DATE 06/07/2007
TOWNSHIP 14 SOUTH, RANGE 6 WEST, WILLAMETTE MERIDIAN; SECTION 15 CORNER NONE
DONATION LAND CLAIM M. L. CHARLES NO. 01 CORNER SOUTHWEST
CONDITION REPORT _____; REFERENCED OUT _____; RENEWED XX; SURVEYED IN _____

LOCATION AND COMMENTS:

CORNER IS LOCATED IN A ± 4 YEAR OLD D FIR PLANTATION ON A NORTHEAST FACING SLOPE TO REACH CORNER FROM THE JUNCTION OF DAWSON AND FOSTER ROADS, TRAVEL WESTERLY ON DAWSON ROAD FOR 1.60 MILES, THEN LEFT ON PRIVATE DRIVEWAY (24048 DAWSON ROAD) FOR 0.16 MILES TO RESIDENCE, THEN BEAR RIGHT ON GRAVEL ROAD FOR 0.04 MILES TO "Y" JUNCTION, THEN RIGHT ON SPUR ROAD FOR 0.76 MILES AND PARK, THEN S30°E THROUGH D FIR PLANTATION FOR 200 FEET TO CORNER. CORNER IS GOOD FOR PREMARKING AND GPS CONTROL FOR A FEW MORE YEARS

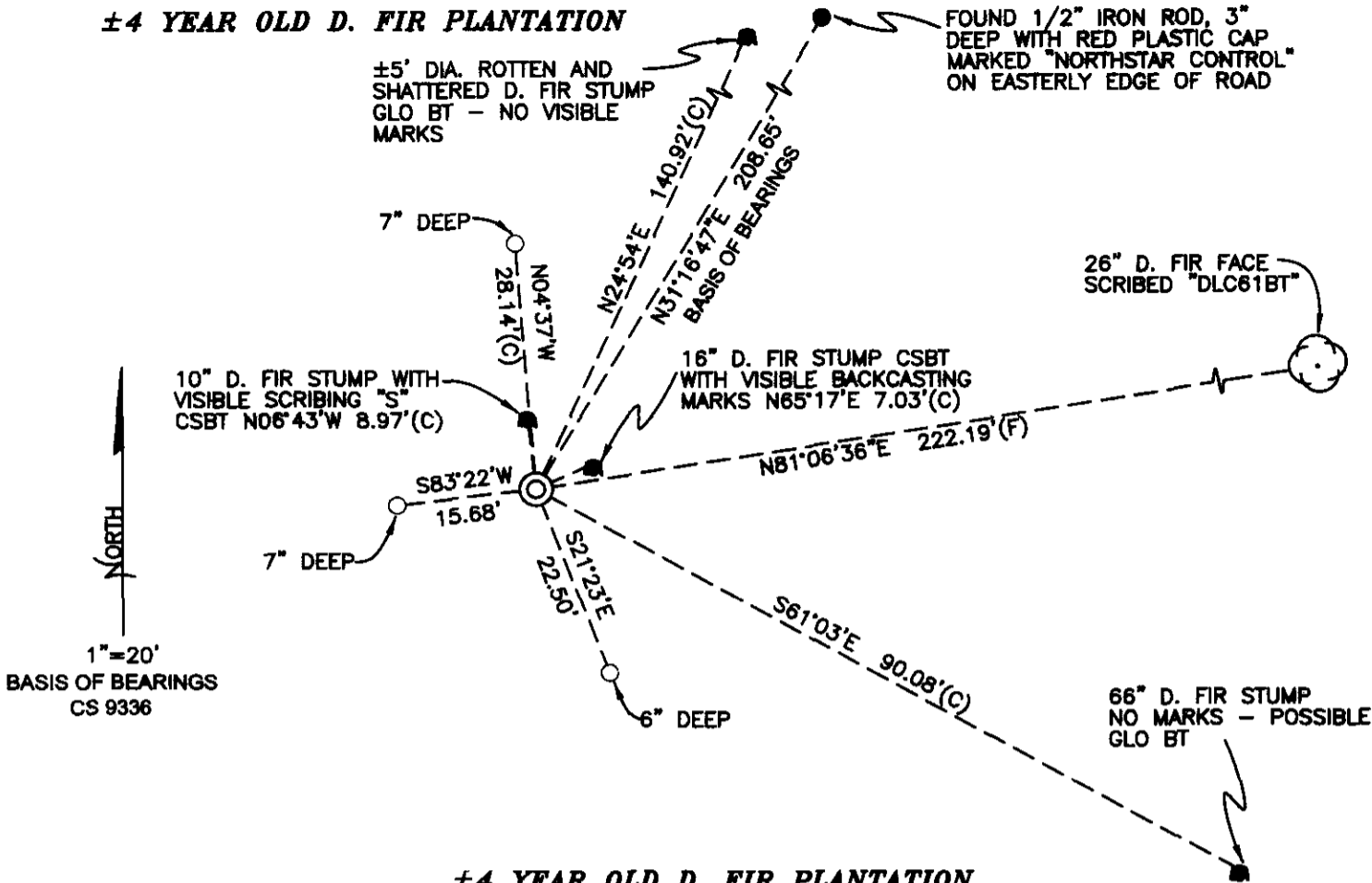
MONUMENTS AND ACCESSORIES FOUND (CONDITION AND SOURCE):

- 1 FOUND 3/4" X 31" RUSTY IRON PIPE, 2" ABOVE GROUND LEVEL FOR CORNER POSITION
(SET 3/4" PIPE FROM BOTH STANDING GLO BEARING TREES PER RECORDS [02] AND [03])
(3/4" PIPE PER RECORD [05])
FOUND 3/4" PIPE PER RECORD [06])
- 2 FOUND $\pm 5'$ DIAMETER ROTTEN AND SHATTERED D FIR STUMP, N24°54'E, 140.92 FEET TO CENTER. NO MARKS FOUND
(MARKED 18" FIR, N21°E, 138.60 FEET PER RECORD [01])
(FOUND 40" FIR, N24°E, 138.60 FEET PER RECORDS [02] AND [03])
(40" FIR, N24°E, 138.60 FEET PER RECORD [05])
(FOUND 60" FIR STUMP, N24°E, 138.60 FEET, NO MARKS, PER RECORD [06])
- 3 FOUND 66" D FIR STUMP, S61°03'E, 90.08 FEET TO CENTER. NO MARKS FOUND. PROBABLE GLO BEARING TREE
(MARKED 20" FIR, S55°E, 83.16 FEET PER RECORD [01]),
(FOUND 40" FIR, S60°E, 83.16 FEET PER RECORDS [02] AND [03])
(40" FIR, S60°E, 83.16 FEET PER RECORDS [05])
- 4 FOUND 16" X 5' D FIR SNAG WITH HEALED BLAZE, N65°17'E, 7.03 FEET TO CENTER. WE OPENED SNAG TO VISIBLE BACKCAST SCRIBING
(MARKED 14" DOUBLE FIR, N62°E, 6.60 FEET PER RECORDS [02] AND [03])
(14" DOUBLE FIR, N62°E, 6.60 FEET PER RECORD [05])
(FOUND 18" D FIR HIGH CUT STUMP, N63°E, 6.60 FEET PER RECORD [06]).
- 5 FOUND 10" VERY ROTTEN D FIR STUMP, N6°43'W, 8.97 FEET TO CENTER. FOUND VISIBLE SCRIBING ON SMALL LOOSE SLAB LYING AT BASE OF STUMP
(MARKED 8" FIR, N8°W, 8.25 FEET PER RECORDS [02] AND [03])
(8" FIR, N8°W, 8.25 FEET PER RECORD [05])
(FOUND 8" FIR STUMP REMAINS, N8°W, 8.25 FEET PER RECORD [06])
- 6 FOUND 1/2" IRON ROD WITH RED PLASTIC CAP MARKED "NORTHSTAR CONTROL", N31°16'47"E, 208.65 FEET. **BASIS OF BEARINGS FOR THIS RESTORATION.**
(SET 1/2" ROD REFERENCE MONUMENT, N31°16'47"E, 208.48 FEET PER RECORD [06])

MONUMENT SET (PROCEDURES AND DESCRIPTION):

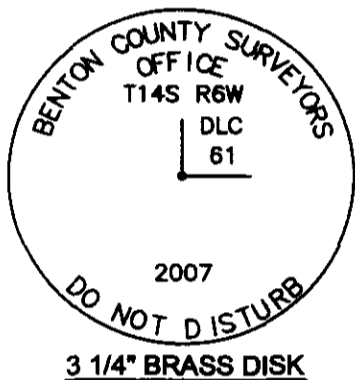
HELD THE 3/4" X 31" IRON PIPE AS SET PER RECORD [02] FOR CORNER POSITION. PIPE WAS FOUND UNDISTURBED AND FIRMLY SET. PIPE FITS WELL WITH ACCESSORIES MARKED PER SAID RECORD [02]. REMOVED PIPE AND SET A 2" X 31 1/2" GALVANIZED IRON PIPE WITH A 3 1/4" BRASS DISK CONCRETED IN THE TOP, 1" BELOW GROUND LEVEL AND MARKED AS SHOWN PAGE 2 OF 2. RESET 3/4" IRON PIPE ON THE NORTH SIDE OF NEW MONUMENT IN PLUMB POSITION AND 4" BELOW GROUND LEVEL. SET A 6 FOOT ORANGE CARSONITE "SURVEY MARKER" POST 0.5 FEET SOUTH OF NEW MONUMENT.

±4 YEAR OLD D. FIR PLANTATION



±4 YEAR OLD D. FIR PLANTATION

MONUMENT DETAIL



LEGEND

- SET 5/8" X 30" REBAR WITH YELLOW PLASTIC CAP MKD "BENTON COUNTY SURVEYOR"
- FOUND MONUMENT AS NOTED
- (F) MEASUREMENT TO FACE
- (C) MEASUREMENT TO CENTER
- ⊙ GOVERNMENT MONUMENT SET AS SHOWN
- ⊙ BEARING TREE AS NOTED
- C.S.B.T. COUNTY SURVEYORS BEARING TREE
- GLO GENERAL LAND OFFICE
- BEARING TREE STUMP AS NOTED

NEW ACCESSORIES:

- 1 SET REBAR (SEE LEGEND) 6" BELOW GROUND LEVEL S21°23'E, 22.50 FEET.
- 2 SET REBAR (SEE LEGEND) 7" BELOW GROUND LEVEL S83°22'W, 15.68 FEET
- 3 SET REBAR (SEE LEGEND) 7" BELOW GROUND LEVEL N04°37'W, 28.14 FEET.
- 4 26" D FIR FACE SCRIBED "DLC61BT" N81°06'36"E, 222.19 FEET TO FACE. SET ALUMINUM NAIL AND PLASTIC WASHER BELOW SCRIBING FOR DISTANCE AND ANGLE MEASUREMENT.

NOTES

COMPASS DECLINATION IS 20° EAST. ALL MEASURED DISTANCES AND BEARINGS ARE TO THE CENTER OF THE OBJECT, UNLESS OTHERWISE NOTED. ALL BEARING TREES ARE PAINTED AND HAVE A B.T. TAG ATTACHED, FACING THE CORNER UNLESS OTHERWISE NOTED. ALL NEW BEARING TREES HAVE A PLASTIC WASHER (STAMPED "BENTON COUNTY SURVEYOR CORNER RESTORATION") ATTACHED (BY ALUMINUM NAIL) TO THE FACE, BELOW THE "BT" FOR DISTANCE AND ANGLE MEASUREMENT UNLESS OTHERWISE NOTED. THE DRAWING IS FROM AUTOCAD RELEASE 2006.

THIS RESTORATION WAS PERFORMED AT THE DIRECTION AND APPROVAL OF THE BENTON COUNTY SURVEYOR, [Signature]

FIRM/AGENCY. BENTON COUNTY SURVEYOR'S OFFICE
 ADDRESS: 360 S.W AVERY AVE. CORVALLIS OR 97333; PH. 766-6821
 PRESENT: DAVID M. DEAN, P.L.S. AND BERNIE ALTENBACH, SURVEY TECH.
 EQUIPMENT. LEICA TCR 1105 WITH TDS SOFTWARE ON BOARD

REGISTERED
PROFESSIONAL
LAND SURVEYOR

6/20/07 *David M. Dean*

OREGON
JULY 13, 1984
DAVID M. DEAN
2090

RENEWAL DATE: 12/31/07